

oraimo 512A Nugget Ice Maker



oraimo 512A Nugget Ice Maker User Manual

[Home](#) » [oraimo](#) » oraimo 512A Nugget Ice Maker User Manual 

Contents

- [1 Oraimo 512A Nugget Ice Maker](#)
- [2 IMPORTANT SAFETY INSTRUCTIONS](#)
- [3 INTENDED USE](#)
- [4 ELECTRICITY SAFETY](#)
- [5 RELATED TO USE](#)
- [6 SPECIFICATIONS](#)
- [7 Control Panel & Display](#)
- [8 Regular Cleaning](#)
- [9 TROUBLESHOOTING GUIDE](#)
- [10 Documents / Resources](#)
 - [10.1 References](#)
- [11 Related Posts](#)



Oraimo 512A Nugget Ice Maker



IMPORTANT SAFETY INSTRUCTIONS

READ ALL INSTRUCTIONS BEFORE USE AND SAVE FOR FUTURE REFERENCE



- DO NOT touch or hold the mains plug with wet hands.



- DO NOT tilt the ice maker. If tipped over, set it upright on a flat, level surface for at least 2 hours before use.



- Fill the water tank with fresh potable water or connect it with a water filtration system to prolong the service life.
- When using an electrical appliance, especially when children are present, basic safety precautions should always be followed, including the following.

INTENDED USE

- This appliance is not intended for use by persons (including children) with reduced physical, sensory or mental capabilities, or lack of experience and knowledge unless they have been given supervision or instruction concerning the use of the appliance by a person responsible for their safety.
- Close supervision is necessary when any appliance is used by or near children.
- Children should be supervised to ensure that they do not play with the appliance.
- Cleaning and user maintenance shall not be done by children unless they are older than 8 and supervised. Keep the appliance and its cord out of reach of children.

- Use the appliance only for intended household purposes as described in this User Manual.

ELECTRICITY SAFETY

- This appliance must be provided with the correct voltage via a professionally installed power socket.
- Make sure the voltage indicated on the label of the appliance is the same as your local supply.
- DO NOT operate the appliance with a damaged cord or plug or if the product malfunctions, is dropped or is damaged in any manner relocate the Erin counter strip outlet/ receptacle
- Never use it with an extension cord or
- DO NOT let the cord hang over the edge of the table or counter, or touch hot surfaces.
- DO NOT immerse any part in water or any other liquid.

RELATED TO USE

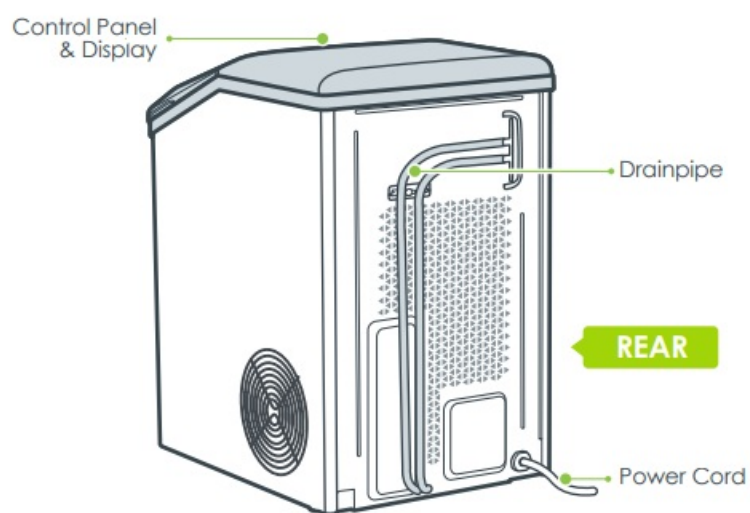
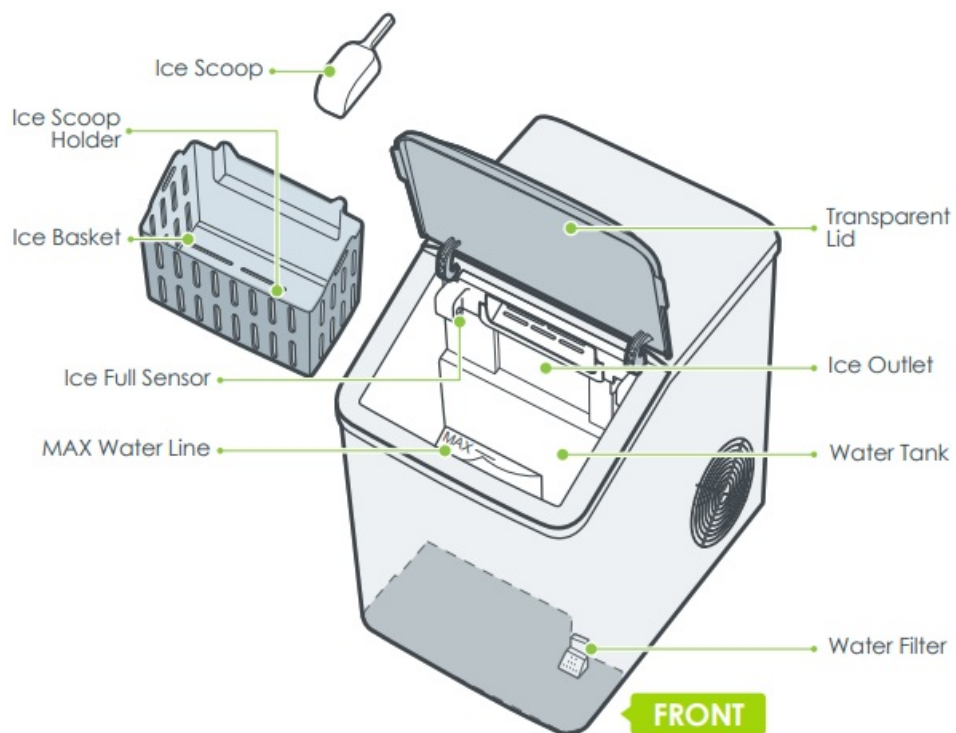
- DO NOT attempt to disassemble, repair, modify or replace any part of the appliance. No user-serviceable parts inside. All servicing should be performed by qualified personnel only.
- Always place and use the appliance on a dry, stable, level, and horizontal surface. Make sure it cannot be easily knocked over by a person or object.
- Always turn the appliance Off and unplug it before cleaning, making any repairs or servicing. or whenever not in use.
- DO NOT sit on or place any object on top of the appliance.
- Do not use water that is micro-biologically unsafe or of unknown quality.
- DO NOT use mechanical devices to defrost. Carry out the self-cleaning cycle to remove any frozen parts.
- If the appliance is stored in a cold environment, wait at least 3 hours for the appliance to warm to room temperature before plugging it in.

FOR HOUSEHOLD USE ONLY SAVE THESE INSTRUCTIONS

SPECIFICATIONS

Input	120V~ 60Hz
Rated Power	170W
Ice Basket Capacity	2.5lbs./1.1kg
Water Tank	0.48Gal./1.8L
Daily Production	37lbs./17kg

This ice maker may have been tilted or placed upside down during transportation. Please set it upright for at least 2 hours before initial use to allow the refrigerant fluid to settle.



Control Panel & Display



Operation Instructions

Make sure the drain plug is firmly inserted before use. The ice maker will stop making ice when the ice basket is full and resume in 4 hours automatically. Remove the ice cubes timely, the unit will restart making ice immediately if an adequate amount of water is detected.

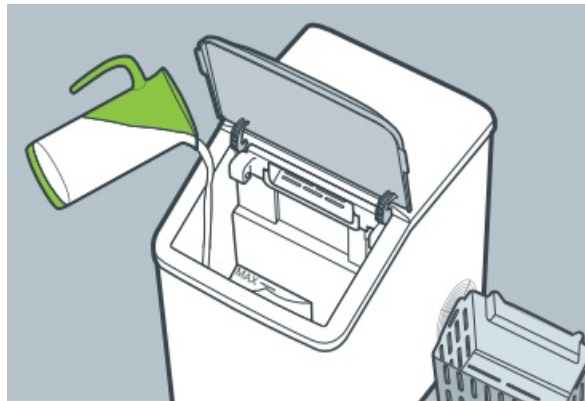
Locate and Clean

Locate upright on a flat, level surface with at least 15 cm/6 inches of clearance on the sides and back. Clean the tank, ice basket and ice scoop, then settle for at least 2 hours before first use.



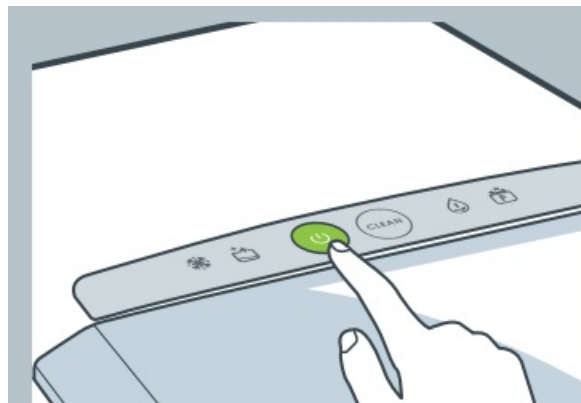
Add Water Manually

Take the ice basket out, and fill the water tank with clean potable water below the AX line. Recommended water type: distilled or demineralized water at 40°F(5°C)-82°F(28°C).



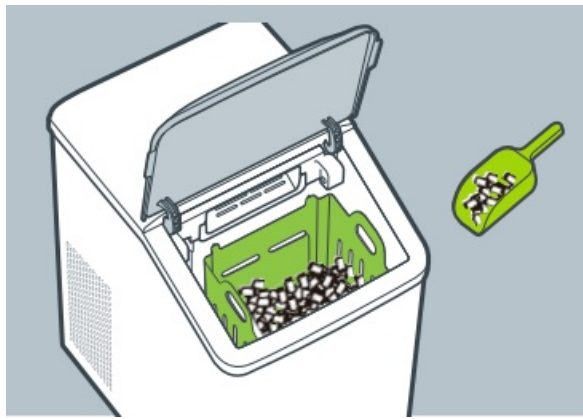
Start Making Ice

Plug into a properly installed grounded outlet, then press the button to start the making cycle. It will keep making ice until the ice basket is full.



Scoop Ice Out

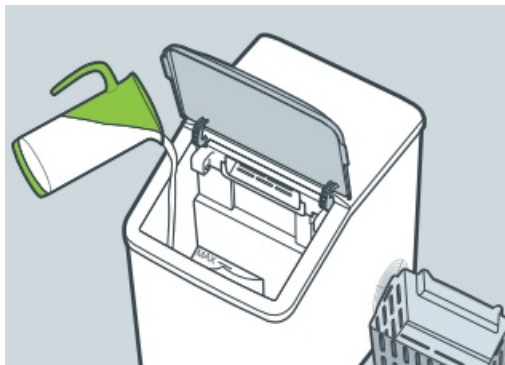
The ice maker will start to produce ice in 15 minutes. Scoop the ice cubes out once made. Put in use or store in a freezer to avoid melting.



Self-Cleaning

To keep your nugget ice tasting fresh, we recommend that you carry out self-cleaning at least once every 1 to 2 weeks.

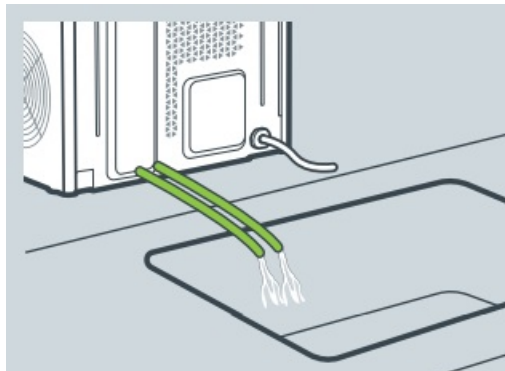
- Fill the tank with water below the AX line.



- Hold for 3s to start a 5-minute self-cleaning cycle (stays solid on).



- Once completed, will turn off. Unhook the drainpipe and lay down to a sink.

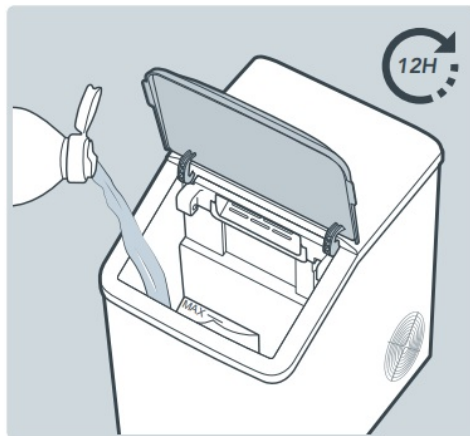


Regular Cleaning



1. Unplug and take out the ice basket.
2. Remove the water filter on the right corner of the tank.
3. Rinse and lean on the ice basket. and water filter with diluted detergent and water.
4. Clean the water tank using a soft cloth moistened with water.
5. To clean the exterior, use a soft cloth dampened with soapy water.
6. Dry with a soft cloth.
7. To remove the fallen dirt or fibres, we recommend cleaning the ice basket and water tank once a week.
8. Unplug before cleaning.

Removal of Scale/Mineral Build-up



1. Fill the tank with water below the MAX line.
2. Add in distilled white vinegar or citric acid descaling agent. Set aside for 12 hours or overnight.
3. Hold CLEAN for 3s to start the self-cleaning cycle. Repeat up to 3 cleaning cycles.
4. Drain the mixture and continue running 3 cleaning cycles with fresh water for each rinse

For scale or mineral build-up, follow the directions to deep clean periodically or when needed.

- Do not clean with solvents or chemicals.
- When not in use for an extended period, drain the water tank and clean as instructed.
- Cover and store in a cool, dry location away from direct sunlight.

TROUBLESHOOTING GUIDE

The troubleshooting guide addresses the most common problems. If problems persist, feel free to contact Customer Support at contact@oraimo.com. The ice maker does not work or stops making ice suddenly. Keep a 15cm/6inch clearance on all sides of the ice maker for proper ventilation.

PROBLEM	SOLUTION
 solid on	<ul style="list-style-type: none">• Lack of water. Fill water up to the MAX level and press  to restart.• Disassemble the water filter. Check and clean when necessary.• Check if the water level detector is blocked. Clear and restart.• Scale blocked in internal pipes. Descale as instructed.
 solid on	<ul style="list-style-type: none">• Ice basket full. Remove ice and press  to restart.• Ice full sensor damaged. Contact Customer Support for help.
 solid on ,  flashing	<ul style="list-style-type: none">• Ice-making assembly is defrosting. Wait 30 minutes for the ice maker to return to normal automatically.• Or you can hold  for 3s to carry out a self-cleaning cycle, then press  to restart after cleaning is done.
 flashing ,  flashing	<ul style="list-style-type: none">• Ice-making assembly is frozen. Wait 45 to 60 minutes for the ice maker to defrost automatically. Unplug after 45 to 60 minutes then run the cleaning program 2-3 times with fresh water.• Contact Oraimo customer service for help if it happens frequently.

- Use water with a temperature between 40°F(5°C) and 82°F(28°C).
- Operate in an environment between 50°F (10°C) and 90°F (32°C).
- Contact Oraimo customer service for help.

Noise during ice-making

- Ice-making assembly is frozen. Turn off the machine for 45 to 60 minutes for ice to melt. Then follow the steps of “Descaling” on page 10.
- Remove any other objects in contact with the ice maker.
- Contact Oraimo customer service for help.
- Water leakage Contact Oraimo customer service for help.

Ice making cycle is normal but no ice is being formed

- Ice-making capacity goes down as ambient temperatures go up, and it will be severely reduced at temperatures over 90°F.
- A restricted drain or standing water in the water tank. Check the drainpipe for kinks.

Ice cubes easily melted

The ice basket is not refrigerated, and the ice cubes will melt if not used promptly. Please use the ice cubes immediately or store them in the freezer once made to prevent melting. This product is covered with an Oramo product and labour warranty for 12 months from the date of its original purchase.



The warranty will not apply in cases of

- Misuse, dismantling, or repairs performed by unauthorized personnel.
- Any appliance that has been tampered with or used for commercial purposes.
- Use of force, natural hazards, and damage caused by external influences.
- Damage caused by non-observance of the User Manual, e.g. connection to an unsuitable mains supply or non-compliance with the instructions.
- Partially or completely dismantled appliances.
- Defects caused by or resulting from damages from shipping or alteration to the product or any of its parts that have been performed by unauthorized personnel.

We can only provide after-sales service for products that are sold by Oramo or Oramo-authorized retailers and distributors. If you have purchased your appliance from a different place, please contact your seller for return and warranty issues. Please have your order ID ready before contacting Customer Support.

This product is covered by a guarantee from the date of purchase. The warranty is valid only when the warranty card is properly completed. Warranty is limited to the core product. Accessories included in the package are not covered. Please contact us if you have a question or experience a problem with the product, we promise we will give you a satisfactory solution within 24 hours.

Documents / Resources

 	oraimo 512A Nugget Ice Maker [pdf] User Manual 512A, 512A Nugget Ice Maker, Nugget Ice Maker, Ice Maker, Maker
---	---

References

- [🌐 Official Website – Oramo](#)
- [User Manual](#)

This website is an independent publication and is neither affiliated with nor endorsed by any of the trademark owners. The "Bluetooth®" word mark and logos are registered trademarks owned by Bluetooth SIG, Inc. The "Wi-Fi®" word mark and logos are registered trademarks owned by the Wi-Fi Alliance. Any use of these marks on this website does not imply any affiliation with or endorsement.