

OPTONICA 5036 LED Linear Shape Connector Instruction Manual

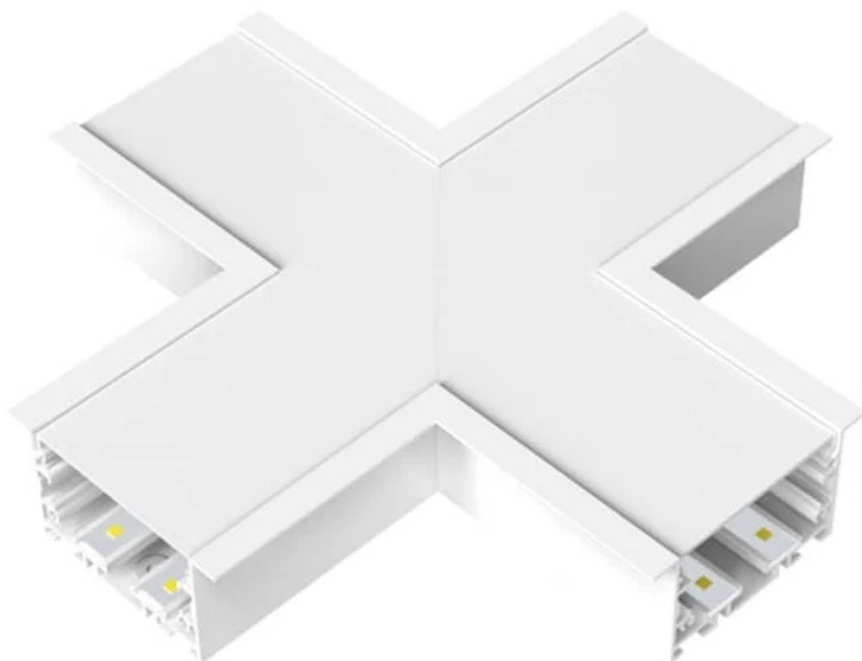
[Home](#) » [OPTONICA](#) » OPTONICA 5036 LED Linear Shape Connector Instruction Manual 

Contents

- [1 OPTONICA 5036 LED Linear Shape Connector](#)
- [2 INSTALLATION INSTRUCTIONS](#)
- [3 Cautions](#)
- [4 Documents / Resources](#)
- [5 Related Posts](#)

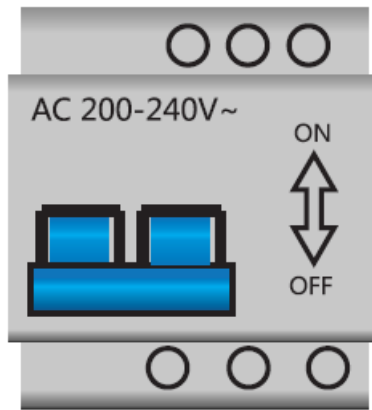
OPTONICA

OPTONICA 5036 LED Linear Shape Connector

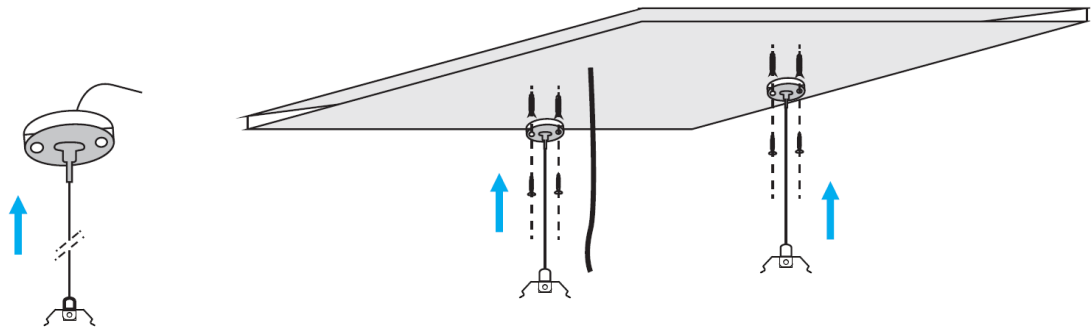


INSTALLATION INSTRUCTIONS

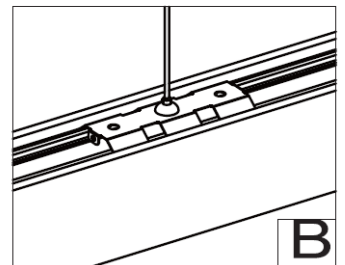
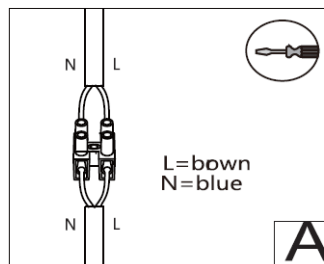
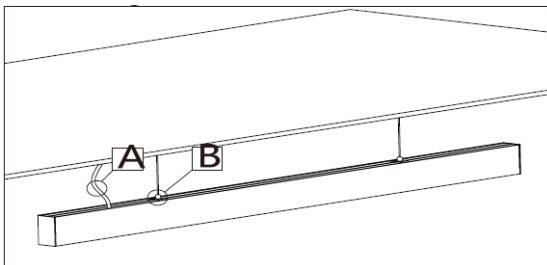
1. Turn off the main power switch



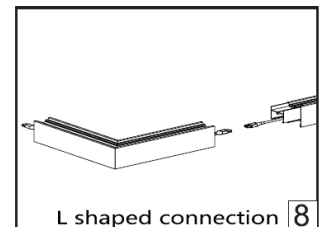
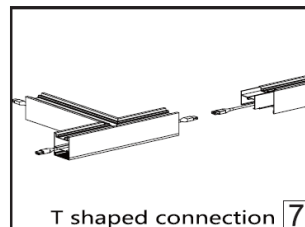
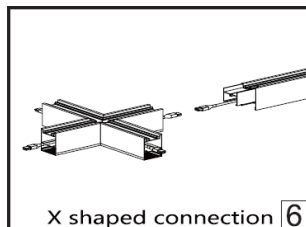
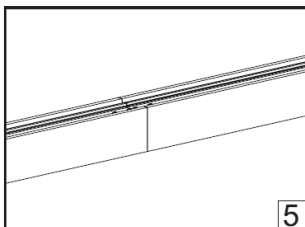
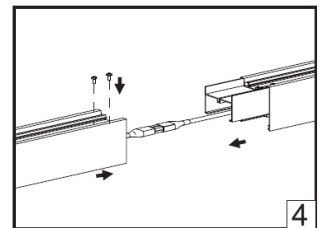
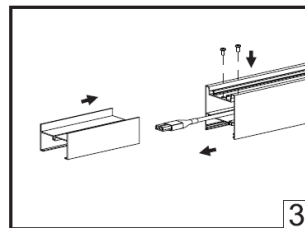
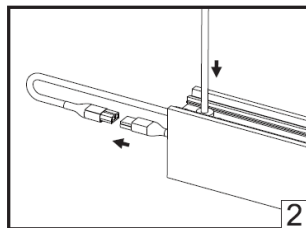
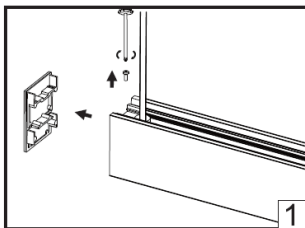
2. Take out the fitting and fix it on the wall.



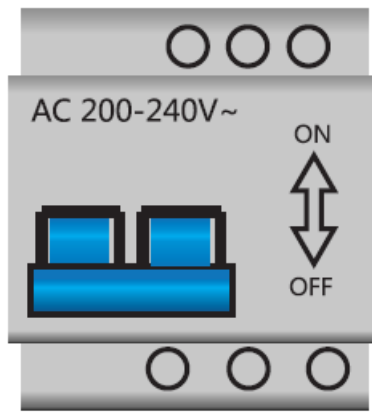
3. Hoisting installation



4. Shaped installation



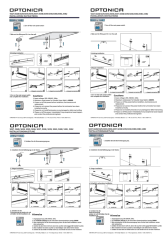
5. Turn on the main power switch and complete the installation.



Cautions

1. Input voltage: 200-240VAC, 50Hz.
2. Maximum rated power for linkable linear light is 1000W.
3. Please cut off the power before installation, maintenance and replacement.
4. Please do not connect the power before the luminaries have been installed correctly.
5. Please do not install luminaries on any damaged or deformed ceiling.
6. Please cut off the power immediately if any exceptional cases happen, and contact the professional engineer.

Documents / Resources

	<p>OPTONICA 5036 LED Linear Shape Connector [pdf] Instruction Manual 5027-5030, 5036-5040, 5080-5082, 5036 LED Linear Shape Connector, 5036, LED Linear Shape Connector</p>
---	--