



OPTONIC 7322 Infrared Motion Sensor Instructions

[Home](#) » [OPTONIC](#) » **OPTONIC 7322 Infrared Motion Sensor Instructions** 

OPTONIC 7322 Infrared Motion Sensor Instructions



Welcome to use Infrared motion sensor!

The product adopts good sensitivity detector and integrated circuit. It gathers automatism, convenience, safety, saving-energy and practical functions. It utilizes the infrared energy from human as control-signal source and it can start the load at once when one enters detection field. It can identify day and night automatically. It is easy to install and used widely.

Contents

1 SPECIFICATION

2 FUNCTIONS

3 INSTALLATION ADVICE

4 CONNECTION

4.1 CONNECTION-WIRE DIAGRAM

5 SENSOR INFORMATION

6 SOME PROBLEM AND SOLVED WAY

7 Documents / Resources

8 Related Posts

SPECIFICATION

- **Power Source:** 220-240V/AC
- **Power Frequency:** 50/60Hz
- **Ambient Light:** <10-2000LUX (adjustable)
- **Time Delay:** Min.10sec±3sec Max.7min±2min
- **Rated Load:** Max.800W Maxxima

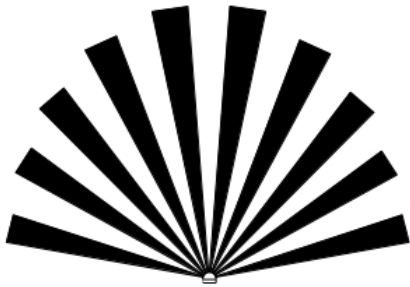
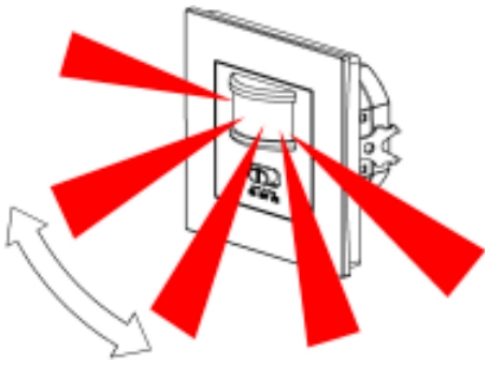
400W  or LED

- **Detection Range:** 160°
- **Detection Distance:** 9m max(<24°C)
- **Working Temperature:** -20~+40°C
- **Working Humidity:** <93%RH
- **Power Consumption:** approx 0.5W
- **Installation Height:** 1-1.8m
- **Detection Moving Speed:** 0.6-1.5m/s

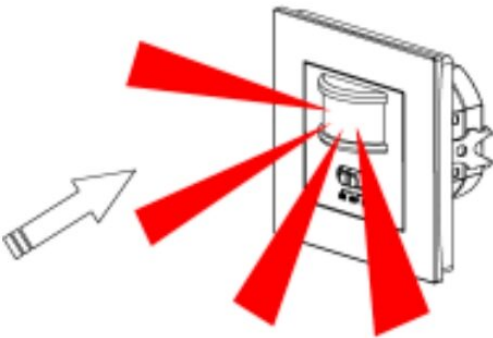
FUNCTIONS

- Can identify day and night: The consumer can adjust working state in different ambient light. It can work in the daytime and at night when it is adjusted on the “sun” position (max). It can work in the ambient light less than 10 LUX when it is adjusted on the “moon” position (min). As for the adjustment pattern, please refer to the testing pattern.
- Time-Delay is added continually: When it receives the second induction signals within the first induction, it will restart to time from the moment.
- The switch: “ON” “OFF” “PIR”.

Good sensitivity



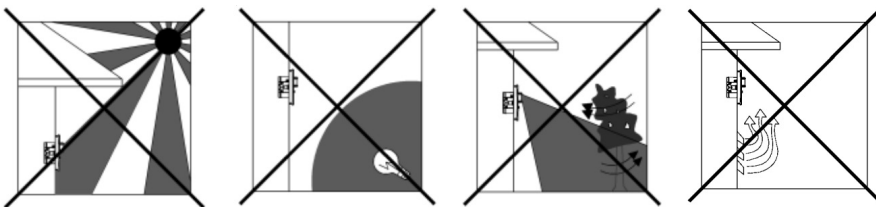
Poor sensitivity



INSTALLATION ADVICE

As the detector responds to changes in temperature, avoid the following situations:

- Avoid pointing the detector towards objects with highly reflective surfaces, such as mirrors etc.
- Avoid mounting the detector near heat sources, such as heating vents, air conditioning units, light etc.
- Avoid pointing the detector towards objects that may move in the wind, such as curtains, tall plants etc.



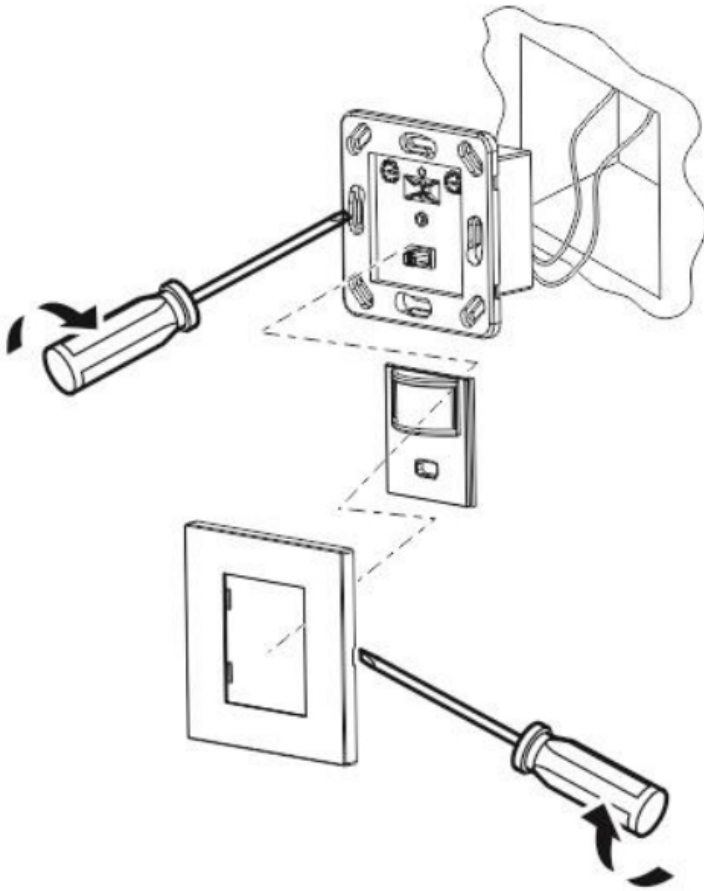
CONNECTION



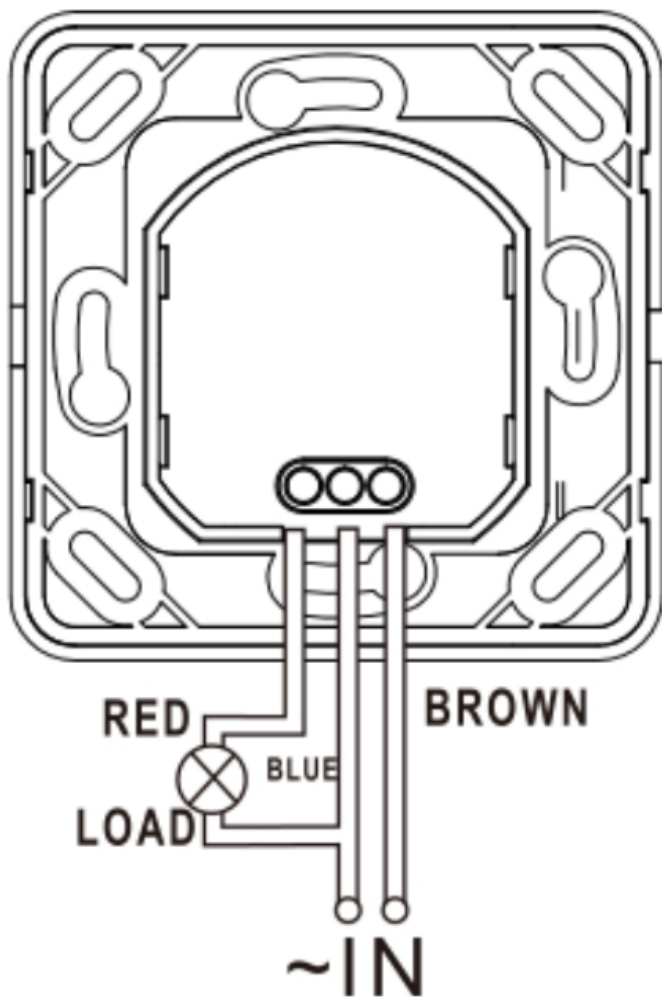
Warning. Danger of death through electric shock!



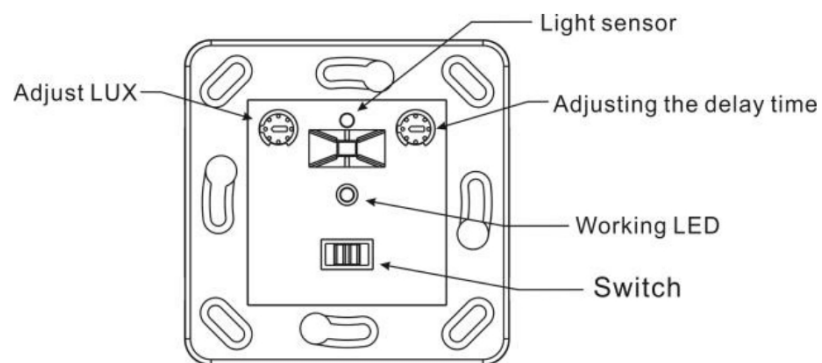
- Must be installed by professional electrician.
- Disconnect power source.
- Cover or shield any adjacent live components.
- Ensure device cannot be switched on.
- Check power supply is disconnected.



- Unload the faceplate of sensor and adjust the time and LUX knob.
- Loose the screws in the connection terminal, and then connect the power to connection terminal of sensor according to connection-wire diagram.
- If you want to install it in circular hole, put the sensor into the hole and tighten the splay bolt on both sides. If you want to install in quadrate hole, put the sensor into the hole, fix the screw through the mounting hole.
- Install back the faceplate, switch on the power and then test it.

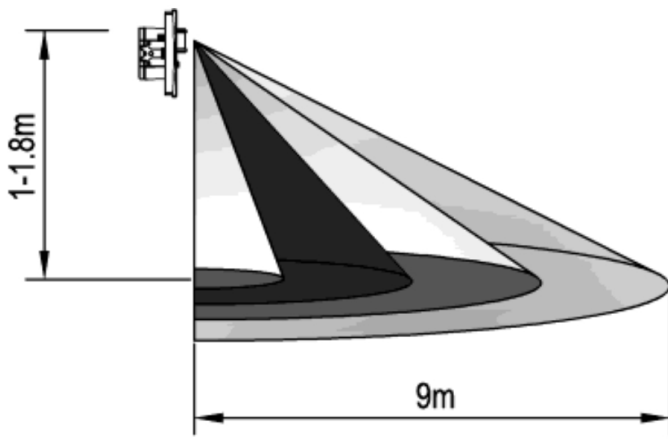


CONNECTION-WIRE DIAGRAM

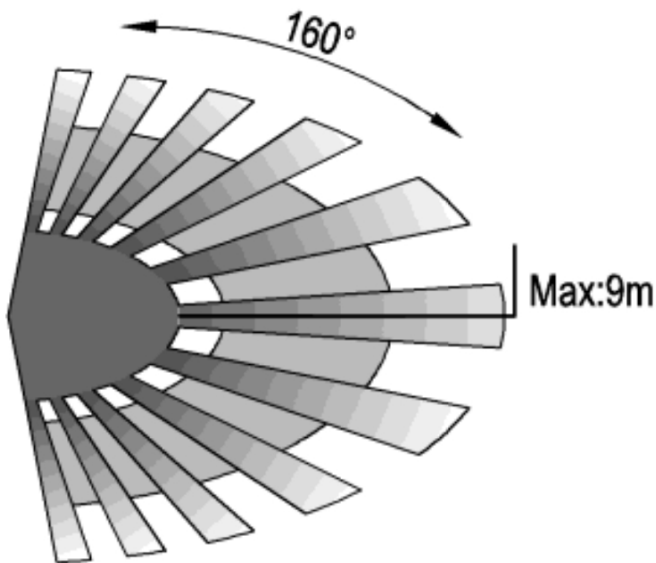


SENSOR INFORMATION

Height of installation: 1-1.8m

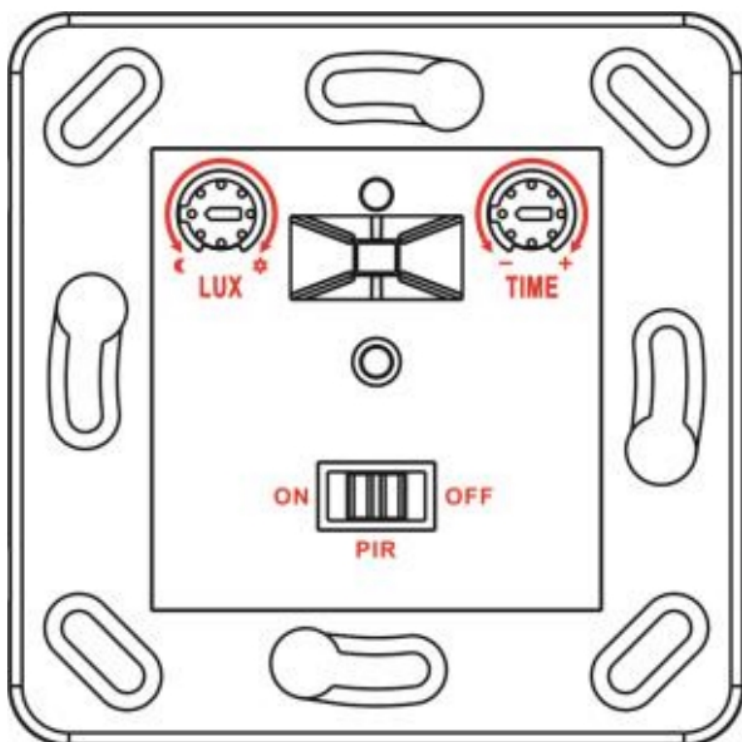


Detection Distance: Max.9m



TEST

- Set the function switch to “ON”, set “TIME” anti-clockwise to minimum, “LUX” clockwise to maximum.
- Switch on the power, the lamp should be on.
- Set the function switch to “OFF”, the lamp should be off immediately.
- Set the function switch to “PIR”, Switch on the power; the sensor and its connected lamp will have no signal at the beginning. After Warm-up 30sec, the sensor can start work .If the sensor receives the induction signal, the lamp will turn on. While there is no another induction signal any more, the load should stop working within $10\text{sec} \pm 3\text{sec}$ and the lamp would turn off.
- Set “LUX” anti-clockwise to minimum, if the ambient light is more than 10LUX, the inductor load should not work after the load stop working. If the ambient light is less than 10LUX (darkness), the sensor would work. Under no induction signal condition, the load should stop working within $10\text{sec} \pm 3\text{sec}$.



Note: when testing in daylight, please turn LUX knob to (SUN) position, otherwise the sensor lamp could not work! If the lamp is more than 60W, the distance between lamp and sensor should be 60cm at least.

SOME PROBLEM AND SOLVED WAY

- The load does not work:
 - **a.** Please check if the connection of power source and load is correct.
 - **b.** Please check if the load is good.
 - **c.** Please check if the settings of working light correspond to ambient light.
- The sensitivity is poor:
 - **a.** Please check if there is any hindrance in front of the detector to affect it to receive the signals.
 - **b.** Please check if the ambient temperature is too high.
 - **c.** Please check if the induction signal source is in the detection field.
 - **d.** Please check if the installation height corresponds to the height required in the instruction.
 - **e.** Please check if the moving orientation is correct.
- The sensor can't shut off the load automatically:
 - **a.** Please check if there is continual signal in the detection field.
 - **b.** Please check if the time delay is set to the maximum position.

IMPORTER: Prima Group 2004 LTD, Bulgaria, 1784 Sofia, Mladost 1, bl. 144,
Ground Floor; Phone: +359 2 988 45 72;

OPTONICA



OPTONIC 7322 Infrared Motion Sensor [pdf] Instructions
7322, Infrared Motion Sensor, 7322 Infrared Motion Sensor, Motion Sensor, Sensor