



Optoma UHD55 DLP Projector User Manual

[Home](#) » [Optoma](#) » Optoma UHD55 DLP Projector User Manual

Contents

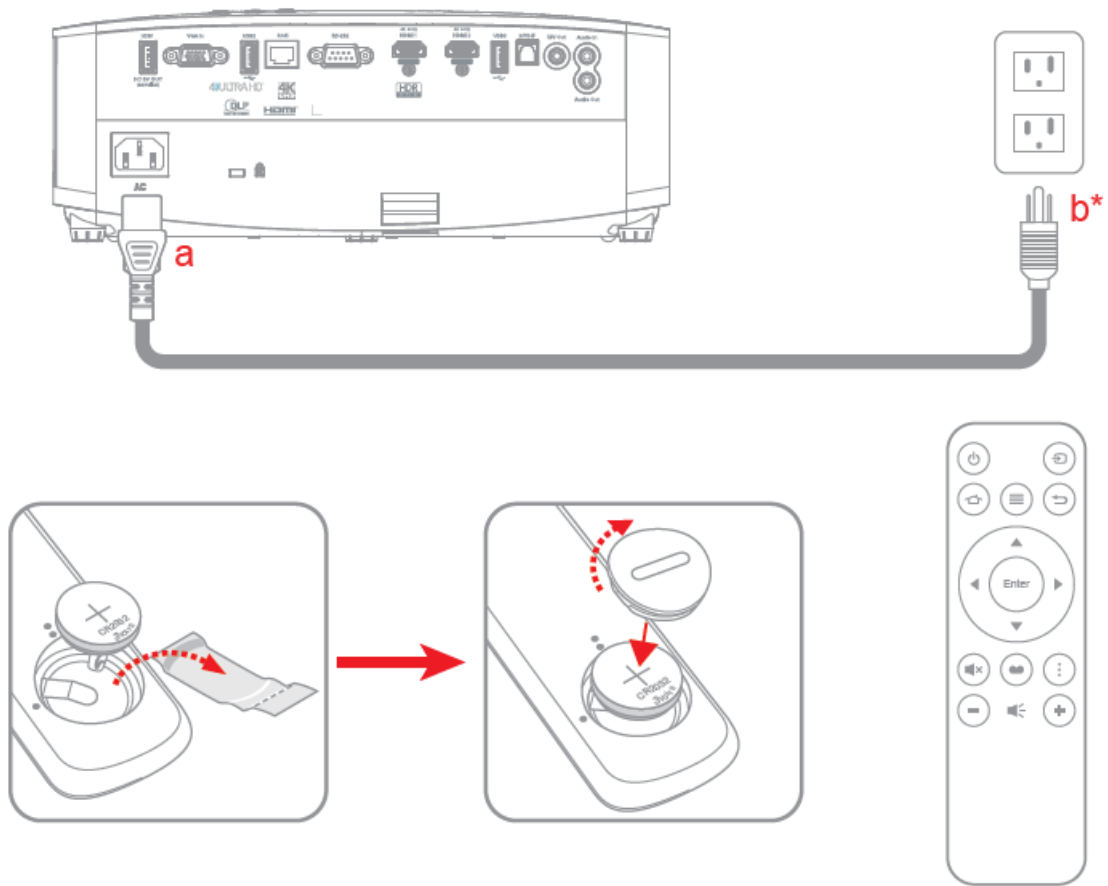
- [1 Optoma UHD55 DLP Projector](#)
- [2 OVERVIEW](#)
- [3 INSTALLATION](#)
- [4 INTEND TO USE](#)
- [5 Safety information](#)
- [6 Documents / Resources](#)
 - [6.1 References](#)
- [7 Related Posts](#)



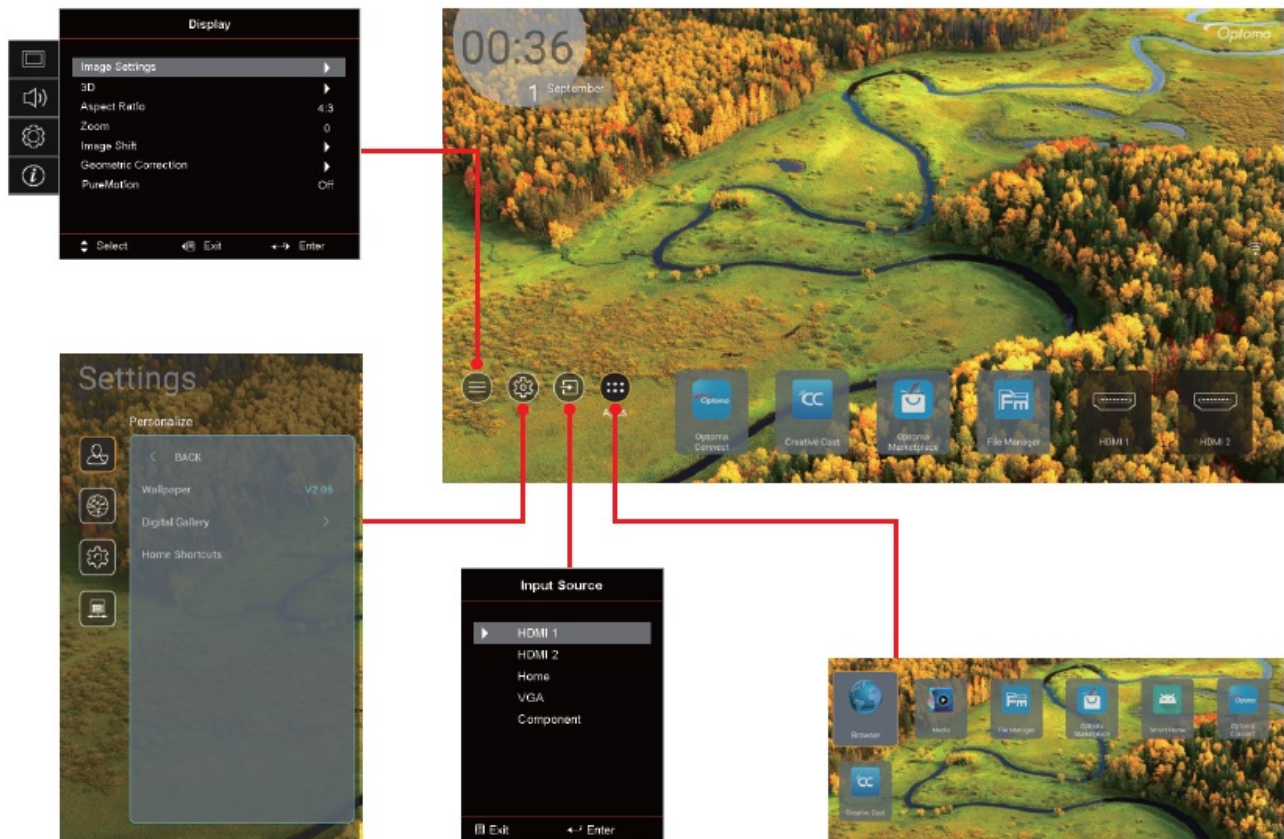
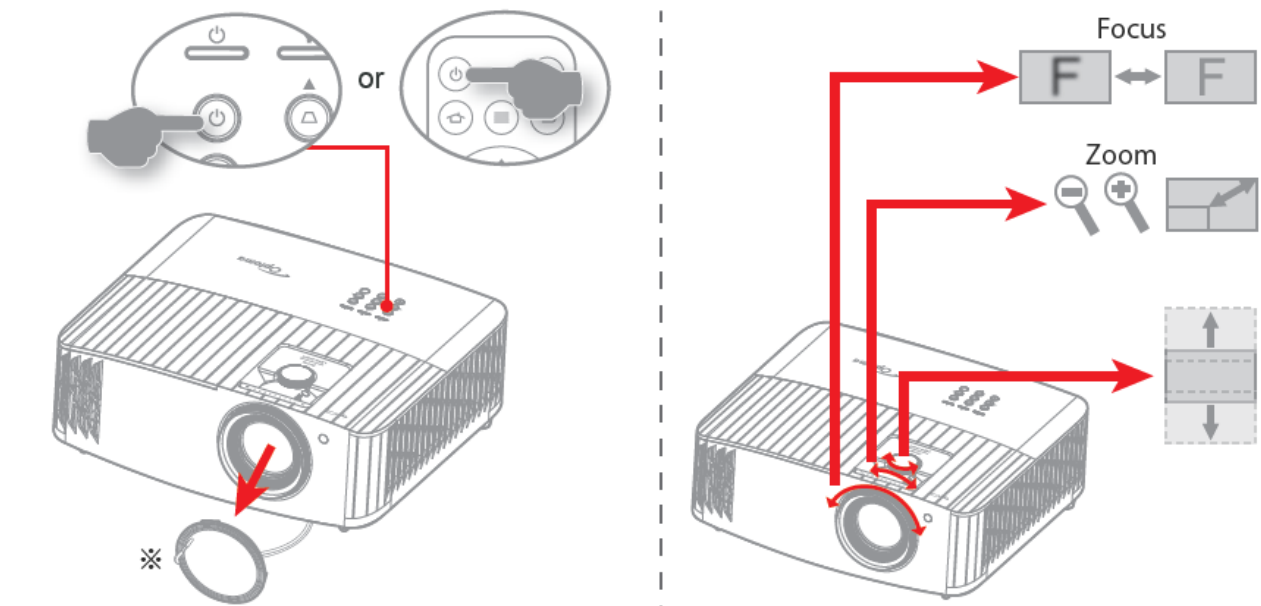
Optoma UHD55 DLP Projector



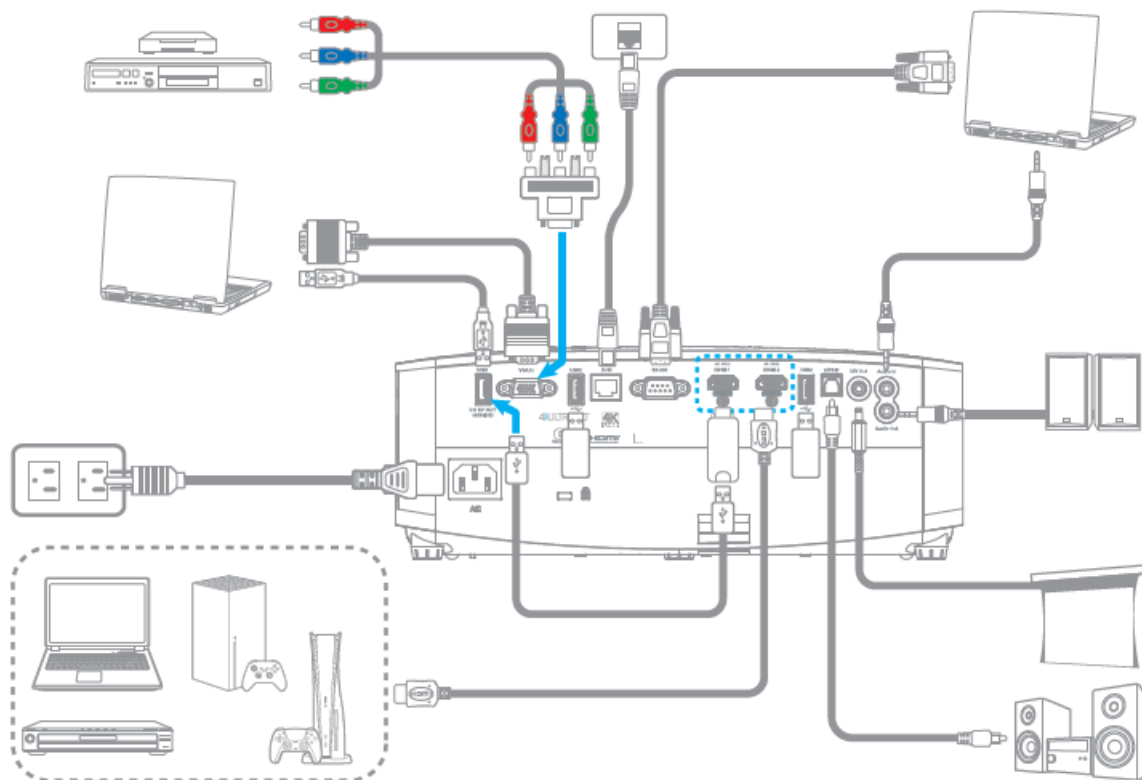
OVERVIEW



INSTALLATION



INTEND TO USE



Note:

- To prolong the effective life of the lamp, make sure to keep the lamp on for at least 60 seconds and avoid performing force shutdown.
- The remote control may vary depending on the region and model.
- For warranty information, please visit our website: www.optoma.com
- For detailed instructions, please scan the QR code or visit the URL:
<https://www.optoma.com/support/download>

Safety information

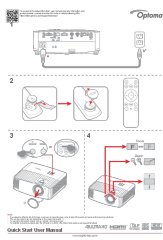
- Before operating the projector, it is essential to read the full safety information in the user manual.
- Do not look into the projector lens during operation. The bright light may harm your eyes.
- Do not block projector inlet or outlet air vents. Do not place the projector on an unstable surface as it may damage the projector or injure the personnel.
- Only use attachments/accessories specified by the manufacturer.
- Do not let objects or liquids enter the projector as it may cause a fire or electric shock.
- To reduce the risk of fire or electric shock, do not expose this appliance to rain or moisture. Make sure that the operating environment meets the requirements in the user manual.
- Do not install near heat sources such as radiators, heaters, stoves or any other apparatus such as amplifiers that emits heat.
- Please do not open or disassemble the projector as this may cause electric shock. The unit should only be repaired by authorized service personnel.
- Turn off the projector and unplug the power cord before you maintain, install or change the lamp.

- Remove battery/batteries from remote control before storage. If the battery/batteries are left in the remote for long periods, they may leak.
- *Use a power strip and or surge protector. As power outages and brown-outs can KILL devices.

Note:

- Lens cap and CD UM are optional accessories depending on the region and model.
- For warranty information in the Europe/Middle East/Africa /ASIA Pacific region, please visit our website:
<https://www.optoma.com>
- For warranty information in the USA region, please visit our website:
<https://www.optoma.com/us/support/warranty-and-return-policy/>
- Address: Telephone: Optoma Technology, Inc 510-897-8600
- 47697 Westinghouse Drive 1-888-289-6786Fremont, CA 94539 (6am – 5pm PST) USA

Documents / Resources

	<p>Optoma UHD55 DLP Projector [pdf] User Manual UHD55 DLP Projector, UHD55, DLP Projector</p>
--	---

References

- [Optoma Global](#)
- [Optoma Global](#)
- [Optoma Support | Download Center](#)