



Optoma 5862RK Interactive Flat Panel Display User Guide

[Home](#) » [Optoma](#) » Optoma 5862RK Interactive Flat Panel Display User Guide 

Contents

- [1 Optoma 5862RK Interactive Flat Panel Display](#)
- [2 Interactive Flat Panel Quick Start Guide](#)
 - [2.1 Powering On/Off the Device](#)
 - [2.2 Front Panel Functionality](#)
 - [2.3 USB](#)
- [3 Quick setup for touch control](#)
- [4 Wi-Fi Dongle Installation](#)
- [5 Pen Holder Installation](#)
- [6 Powering on / off the device](#)
- [7 Front panel functionality](#)
- [8 Quick setup for touch control](#)
- [9 Safety Instructions](#)
- [10 Disposal instructions](#)
- [11 Documents / Resources](#)
 - [11.1 References](#)
- [12 Related Posts](#)



Optoma 5862RK Interactive Flat Panel Display



Interactive Flat Panel Quick Start Guide

Thank you for purchasing this Optoma product. This Quick Start Guide will help you safely set up and operate the Interactive Flat Panel. If you have any questions, please refer to the User Manual.

Powering On/Off the Device

1. Plug the power cable into the power socket of the device.
2. Plug the power cable into the wall outlet.
3. Turn the power switch to the ON (I) position.
4. Remove the cover on the rear of the remote control and insert two AAA batteries.
5. Press the POWER button on the remote control. The indicator on the front of the panel will then turn white and the device will power on.
6. Press the power button on the remote control or press the power button on the front of the display for three seconds and wait for the display to shut down. Only after the indicator light turns red should you turn off the power switch.

Front Panel Functionality

For detailed instructions, please scan the QR code or visit the URL:

<https://www.optoma.com/support/download>

*The product images shown are for illustrative purposes only and may not be an exact representation of the product. Optoma reserves the right to change product images and specifications at any time without notice.

USB

1. Short press this button to put the device into standby mode.
2. Press this button for three seconds to turn on/off the panel.

Quick setup for touch control

- Connect a VGA*, HDMI, or USB-C cable between your external computer and the interactive flat panel to enable the image feed.
- Connect a USB cable between your device and the associated Touch port on your panel to enable touch control.
- If using a VGA cable, please connect an audio cable (3.5mm) between your device and the audio-in on your panel to enable sound.
- Please review the USB Touch ports section in the user manual for details on correct touch port associations.

Input devices shown below are examples only:

- Audio cable
- HDMI cable
- RS232 Serial Port Cable
- VGA Cable
- USB-C Cable

Wi-Fi Dongle Installation

Remove the USB Wi-Fi slot cover and plug the Wi-Fi dongle into the USB port inside. The dongle can receive signal in areas where Wi-Fi networks are available.

Pen Holder Installation

1. Plug the USB cable from the pen holder into the USB port and attach the magnetic pen holder to the side of the interactive flat panel.
2. Put the touch pen into the pen holder.

Attention!

For system security, Optoma interactive flat panel displays run on a customized Android operating system. Additionally, Optoma interactive flat panel displays do not support Google Play Services.

Optoma has streamlined the Android operating system so only modules related to display features remain. The customized Android operating system may not be compatible with all third-party Android apps. Third-party Android apps can vary in quality and some even contain malicious codes, which could compromise system security and functionality and may invalidate your product warranty.

For detailed instructions, please scan the QR code or visit the URL:

<https://www.optoma.com/support/download>

*The product images shown are for illustrative purposes only and may not be an exact representation of the product.

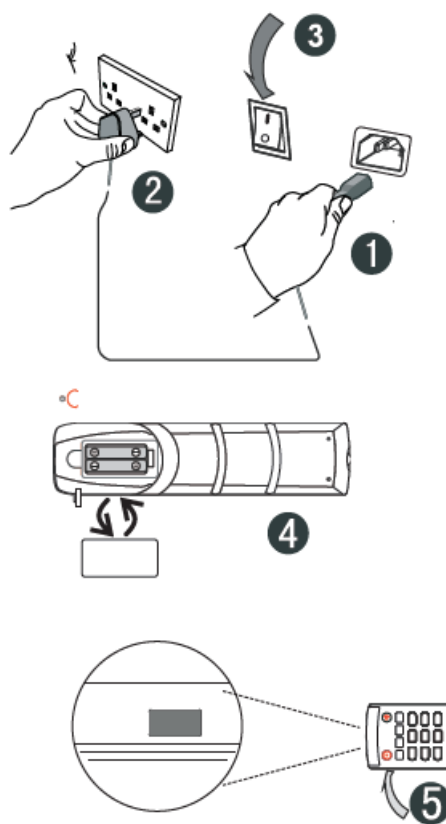
Optoma reserves the right to change product images and specifications at any time without notice.



Thank you for purchasing this Optoma product


This Quick Start Guide will help you safely set up and operate the Interactive Flat Panel. If you have any questions, please refer to the User Manual.

Powering on / off the device



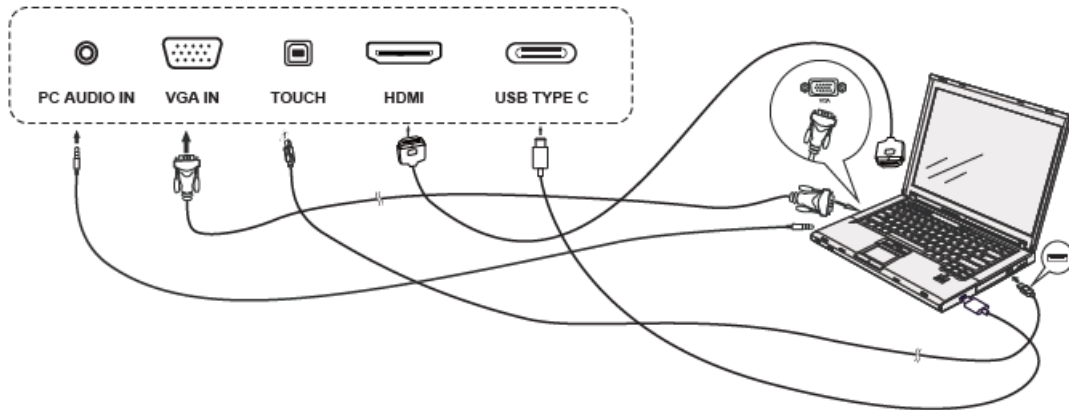
1. Plug the power cable into the power socket of the device
2. Plug the power cable into the wall outlet.
3. Turn the power switch to the ON (I) position.
4. Remove the cover on the rear of the remote control and insert two AAA batteries.
5. Press the POWER button on the remote control. The indicator on the front of the panel will then turn white and the device will power on.
6. Press the power button on the remote control or press the power button on the front of the display for three seconds and wait for the display to shut down. Only after the indicator light turns red should you turn off the power switch.

Front panel functionality

1.  Short press this button to put the device into standby mode
2. Press this button for three seconds to turn on/off the panel

USB USB interface of Android & PC systems

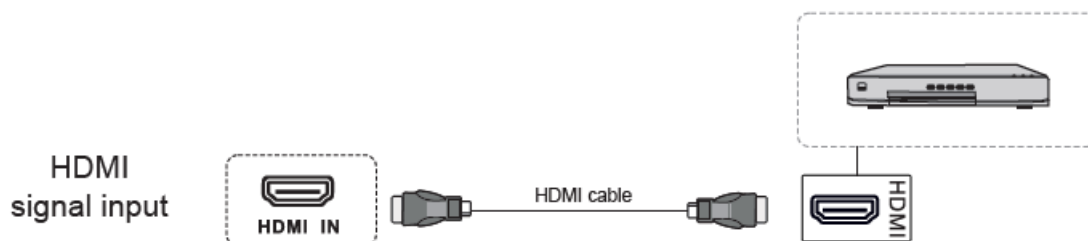
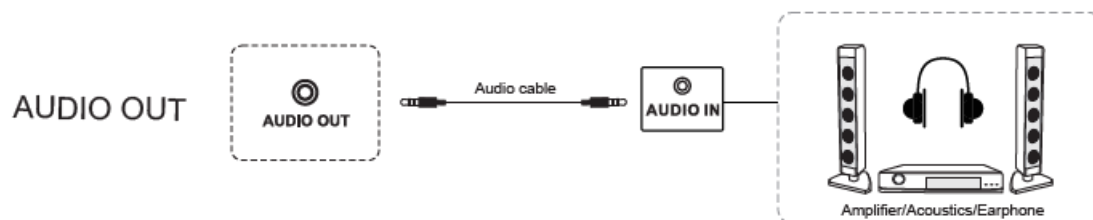
Quick setup for touch control



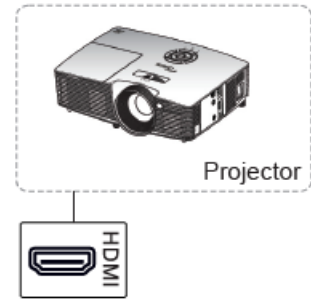
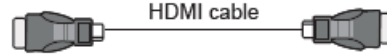
Connect a VGA*, HDMI, or USB-C cable between your external computer and the interactive flat panel to enable the image feed. Connect a USB cable between your device and the associated Touch port on your panel to enable touch control.

If using a VGA cable, please connect an audio cable (3.5mm) between your device and the audio-in on your panel to enable sound.

Please review the USB Touch ports section in the user manual for details on correct touch port associations. Input devices shown below are examples only

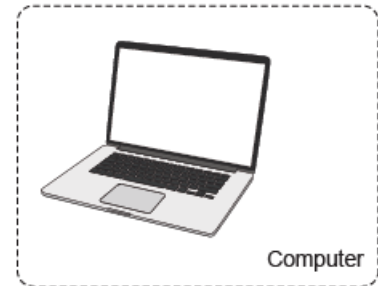
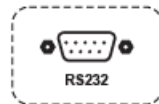


HDMI
signal output



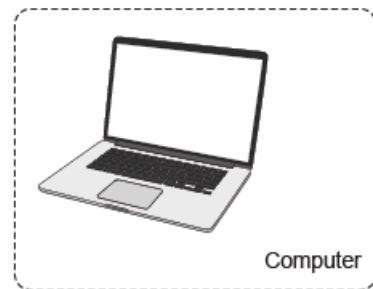
Projector

RS232
Connection



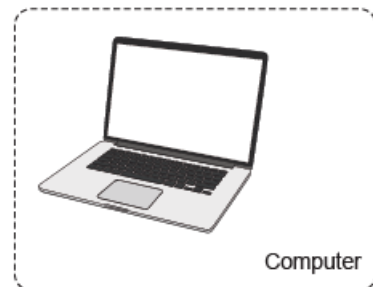
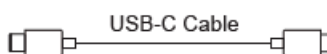
Computer

VGA IN

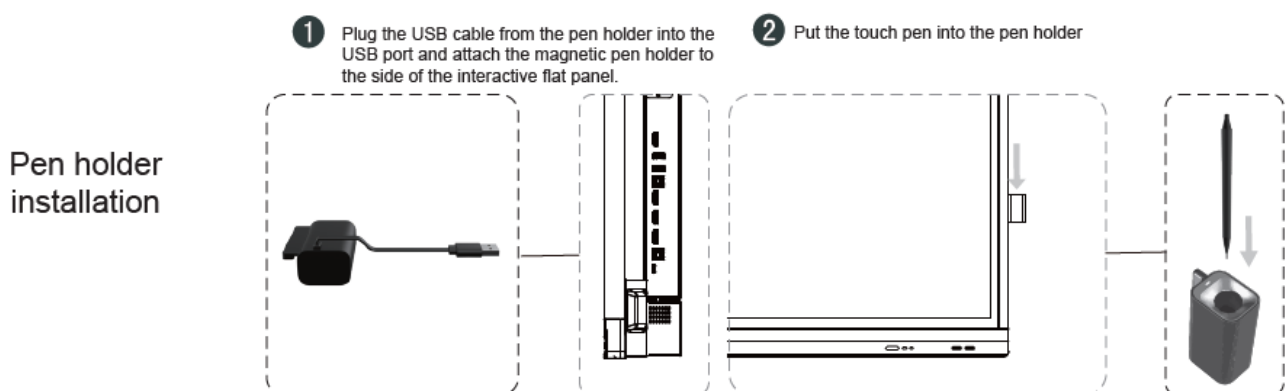
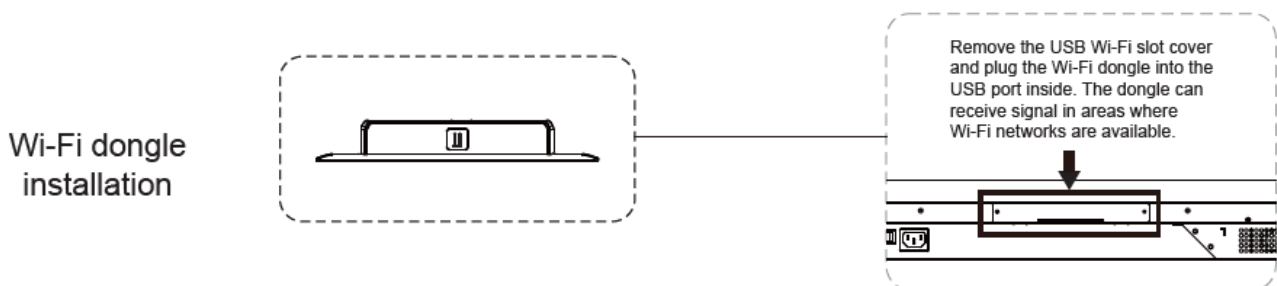
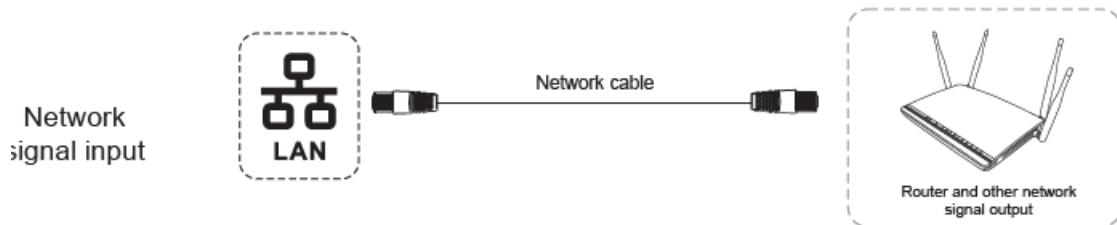
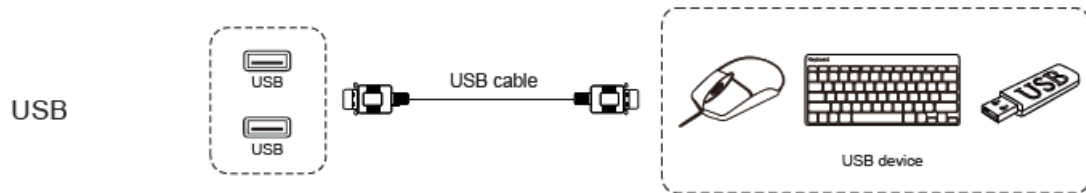


Computer

USB-C



Computer



Attention!

For system security, Optoma interactive flat panel displays run on a customized Android operating system.

Additionally, Optoma interactive flat panel displays do not support Google Play Services.

Optoma has streamlined the Android operating system so only modules related to display features remain. The customized Android operating system may not be compatible with all third-party Android apps. Third-party Android apps can vary in quality and some even contain malicious codes, which could compromise system security and functionality and may invalidate your product warranty.

Optoma makes no representations regarding the quality, security or suitability of any third-party apps and their compatibility with the Optoma interactive flat panel. Optoma shall have no responsibility or liability with respect to any damage, faults, loss in functionality or security issues arising as a direct or indirect result of the installation of third-party apps on the interactive flat panel. Optoma support in rectifying any issue which may result from the installation of third-party apps will be chargeable and may be limited.

Safety Instructions

1. Do not block any ventilation openings, To ensure reliable operation of the unit and to protect (from overheating. it

is recommended to install the unit in a location that does not block ventilation. As example, do not place the unit on crowded coffee table, sofa, bed, etc.

2. Do not put the unit in an enclosure such as a book case or a cabinet that restricts air flow, Do not use the unit near water or moisture. To reduce the risk of fire and/or electric shock, do not expose the unit to rain or moisture
3. Do not install near heat sources such as radiators, heaters, stoves or any other apparatus such as amplifiers that emit heat.
4. Clean only with dry cloth.
5. Only use attachments/accessories specified by manufacturer.
6. Do not use the unit if it has been physically damaged or abused. Physical damage/abuse would be (but not limited to):
 - Unit has been dropped
 - Power supply cord or plug has been damaged
 - Unit has been exposed to rain or moisture.
 - Something has fallen in the unit or something is loose inside.Do not attempt to service the unit yourself. Opening or removing covers may expose you to dangerous voltages or other hazards. Please call Optoma before you send the unit for repair.
7. Do not let objects or liquids enter the unit. They may touch dangerous voltage points and short out parts that could result in fire or electric shock.
8. See unit enclosure for safety related markings.
9. The unit should only be repaired by appropriate service personnel.

Disposal instructions

Do not throw this electronic device into the trash when discarding. To minimize [Pollution] and ensure utmost protection of the global environment, please recycle it.



For warranty information in the Europe Middle East/Africa region, please visit our website: <https://www.optoma.com>

For warranty information in the USA region, please visit our website: <https://www.optoma.com/us/support/return-policy>

Address:

Optoma Technology, Inc
47697 Westinghouse Drive
Fremont, CA 94539
USA

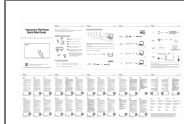
Telephone:

510-897-8600

1-888-289-6786

(6am – 5pm PST)

For warranty information and full user manual please visit our website www.optoma.com

Documents / Resources**[Optoma 5862RK Interactive Flat Panel Display](#) [pdf] User Guide**

5862RK, 5752RK, 5652RK, 5862RK Interactive Flat Panel Display, Interactive Flat Panel Display, Flat Panel Display

References

- [Optoma Global](#)
- [Download world wide - Optoma Support](#)