



OPTITAG 91816 Objects Tracker Instructions



Compatible with AirTag accessories.

Contents [[hide](#)]

[1 Quick instructions](#)

[2 2.How is my privacy protected?](#)

[2.1 How to replace the battery:](#)

[3 4. What is the Find My network? And how does it work?](#)

[3.1 European Union-Disposal Information](#)

[3.2 Regulatory Safety Information](#)

[3.3 KEEP BATTERIES OUT OF REACH OF CHILDREN](#)

[3.4 Safety Statement](#)

[3.5 Documents / Resources](#)

[3.5.1 References](#)

Quick instructions

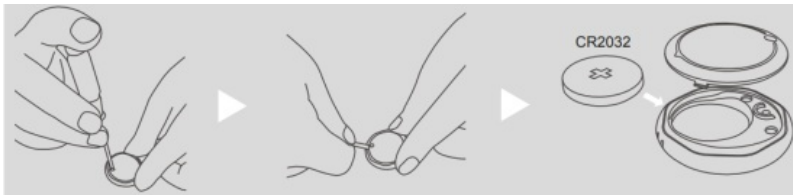
1. **Turn on the device:** Extract insulation paper, the device will beep and turn on.
2. Open the APP that comes with the Apple mobile phone system: Find my;
3. **Choose** Items;
4. **Choose** Add New Item;
5. **Choose** Other Supported Item;
6. During the Searching Items process, a device with the word Opti Tag-91816 will appear
7. Click on the device found in the APP and name it
8. **After naming, you can use device functions:** A. Ring the device, click Play Sound, and the device will emit music .B. Findmy network helps to find: When the device leaves the Bluetooth distance, it cannot be connected in the APP. You can choose Lost Mode,, Enable. Enter the contact mobile phone number, etc. If there is an iPhone near the lost device, the owner's Findmy APP can receive notifications and the latest location.
9. **Delete device:** To delete the device in the APP, you can select Remove item.
10. After removing the device, the device will not shut down and is in the pairing state. If there is no re-pairing within 10 minutes, the device will leave the pairing state. If you need to pair the device, you need to reload the battery for 5 times, the device will play a sound for factory data reset mode. At this time, the device enters the pairing mode and can be paired with the Find My APP again.

2. How is my privacy protected?

Only you can see where your item is. Your location data and history are never stored on the item itself. Devices that relay the location of your item also stay anonymous, and that location data is encrypted every step of the way. So not even Apple knows the location of your device or the identity of the device that helps find it.

How to replace the battery:

1. Loosen the screw and open the battery cover
2. Replace the battery with a new one. (Positive pole upward).
3. Put the new battery, will make a sound, try to put it 5 times, then there will be a special sound for factory data reset.
4. Fasten the shell with the screw and then connect the device again



4. What is the Find My network? And how does it work?

The Apple Find My network provides an easy, secure way to locate compatible personal items on a map using the Find My app on your iPhone, iPad, iPod touch, Mac, or the Find Items app on Apple Watch. Simply pair your compatible product with the Apple Find My app to view it right alongside your Apple devices. If your item ever goes missing, you can put it in Lost Mode to display a message and contact information to anyone who might find it. The Find My network is encrypted and anonymous, so no one else, not even Apple or Nutale, can view its location.

European Union-Disposal Information



■ The symbol above means that according to local laws and regulations your

product and/or its battery shall be disposed of separately from household waste. When this product reaches its end of life, take it to a collection point designated by local authorities. The separate collection and recycling of your product and/ or its battery at the time of disposal will help conserve natural resources and ensure that it is recycled in a manner that protects human health and the environment.

Regulatory Safety Information



WARNING:

KEEP BATTERIES OUT OF REACH OF CHILDREN

Swallowing may lead to serious injury in as little as 2 hours or death, due to chemical burns and potential perforation of the oesophagus.

If you suspect your child has swallowed or inserted a button battery immediately call the 24-hour Poison Information Centre for fast expert advice.

KEEP BATTERIES OUT OF REACH OF CHILDREN

Keep in original package until ready to use

- Call a local poison control center for treatment
- **information. Australia: 13 11 26 Canada:**
1-[800-268-9017](tel:18002689017)(Ontario), 1-[800-567-8911](tel:18005678911)(BC),
1-[800-463-5060](tel:18004635060) (Quebec) US: [800-498-8666](tel:8004988666).-

Verify suitable. emergency call numbers for your country.

- Do not use if the compartment is not secure.
- Dispose of used button batteries promptly and safely.

Flat batteries can still be dangerous.

- Risk of fire and burns.
- Do not recharge, disassemble, heat (-20°C +70°C) or incinerate. Rated voltage 3V

Rated curre

- Immediately dispose of used batteries and keep away from children. Do NOT dispose of batteries in household trash.
- Even used batteries may cause severe injury or death.
- Call a local poison control center for treatment information.

Safety Statement

Article 12


Without permission, any company, firm or users shall not alter the frequency, increase the power, or change the characteristics and functions of the original design of the certified lower power frequency electric machinery.

Article 14

The application of low power frequency electric machineries shall not affect the navigation safety nor interfere a legal communication,

if an interference is found, the service will be suspended until improvement is made and the interference no longer exists. The foregoing legal communication refers to the wireless telecommunication operated according to the telecommunications laws and regulations.

The low power frequency electric machinery should be able to tolerate the interference of the electric wave radiation electric machineries and equipment for legal communications or industrial and scientific applications.

 This product is CE marked in accordance with the provisions of Directive 2014/53/EU and RoHS Directive 2011/65/EU(2015/863/EU). With this, Lampa S.p.A declares that this product complies with the essential requirements and other relevant provisions of Directive 2014/53/EU and Directive 2011/65/EU . It is forbidden for the user to make any changes or modifications of any kind to the device. Changes or modifications not expressly approved by Lampa S.p.A. will void the user's authority to operate the equipment. The complete text of the EU declaration of conformity is available on the following website: www.optiline.it



To use the Apple Find My app to locate this item, the latest version of iOS, iPadOS, or macOS is recommended. The Find items app on Apple Watch requires the latest version of watchOS.

Use of the Works with Apple badge means that a product has been designed to work specifically with the technology identified in the badge and has been certified by the product manufacturer to meet Apple Find .My network product specifications and requirements. Apple is not responsible for the operation of this device or use of this product or its compliance with safety and regulatory standards.

Apple, Apple Find My, Apple Watch, Find My, iPhone, iPad, iPadOS, Mac, macOS and watchOS are trademarks of Apple Inc., registered in the U.S. and other countries. The trademark “iPhone” is used with a license from Aiphone K.K.



LAMPA S.p.A.

Via G. Rossa, 53/55, 46019 Viadana (MN) ITALY

Tel. +39 0375 820700


UNI EN ISO 9001:2015 Certified Company

service@lampa.it

www.optiline.it

OPTITAG

Documents / Resources

	<p>OPTITAG 91816 Objects Tracker [pdf] Instructions</p> <p>91816 Objects Tracker, 91816, Objects Tracker, Tracker</p>
-------------------------------------------------------------------------------------	---------------------------------------------------------------------------------------------------------------------------------------

References

- [User Manual](#)

💎 91816, 91816 Objects Tracker, Objects Tracker, OPTITAG,

📁 OPTITAG Tracker

Leave a comment

Your email address will not be published. Required fields are marked *

Comment *

Name

Email

Website

☐ Save my name, email, and website in this browser for the next time I comment.

Post Comment

Search:

e.g. whirlpool wrf535swhz

Search

[Manuals+](#) | [Upload](#) | [Deep Search](#) | [Privacy Policy](#) | [@manuals.plus](#) | [YouTube](#)

This website is an independent publication and is neither affiliated with nor endorsed by any of the trademark owners. The "Bluetooth®" word mark and logos

are registered trademarks owned by Bluetooth SIG, Inc. The "Wi-Fi®" word mark and logos are registered trademarks owned by the Wi-Fi Alliance. Any use of these marks on this website does not imply any affiliation with or endorsement.