



optimum OP-WFUSB WiFi USB Socket Instructions

[Home](#) » [optimum](#) » optimum OP-WFUSB WiFi USB Socket Instructions 

optimum OP-WFUSB WiFi USB Socket Instructions



Contents

- 1 Product configuration
- 2 Configuration Preparation
- 3 Enter password
- 4 Set up the device
- 5 Reset
- 6 Change Device Name
- 7 Care and Maintenance
- 8 Documents / Resources
- 9 Related Posts

Product configuration

Congratulations on purchasing the OPTIMUM OP-WFUSB Wi-Fi Smart Socket.

This smart socket allows remote control of electrical device and smaller home appliance via the Smart Life APP. A schedule can be created to turn the smart socket on/off set times, and use Voice control via a smart speaker.

Note: on/off settings for the Socket and USB ports are individually controlled by Smart APP

Configuration Preparation

1. Download the smart phone application by scanning the QR Code or searching for Smart Life – Smart Living in the Apple App Store for iPhones, or Google Play for Android phones



iOS/Android App



Smart Life-Smart Living

2. Launch the app and log in. New users will need to register a new account.

Register

USA



Mobile Number/Email

Get Verification Code



I Agree [User Agreement](#) and [Privacy Policy](#)

3. Plug the Wi-Fi Smart Socket into a mains outlet and turn on the outlet power switch. The LED should be green

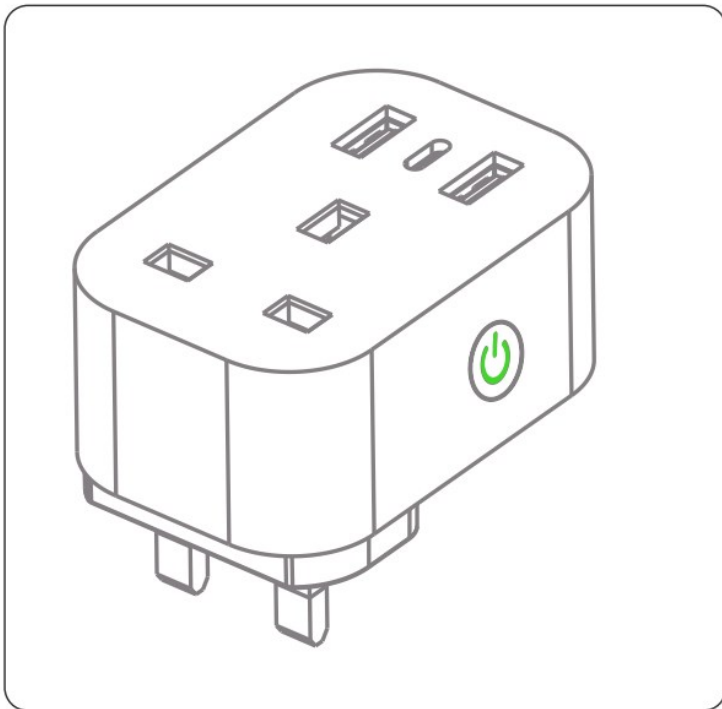
Where Not to Install Your Wi-Fi Smart Socket



Do NOT install the Wi-Fi Smart Socket in wet or damp areas such as bathrooms and laundries

Configuration

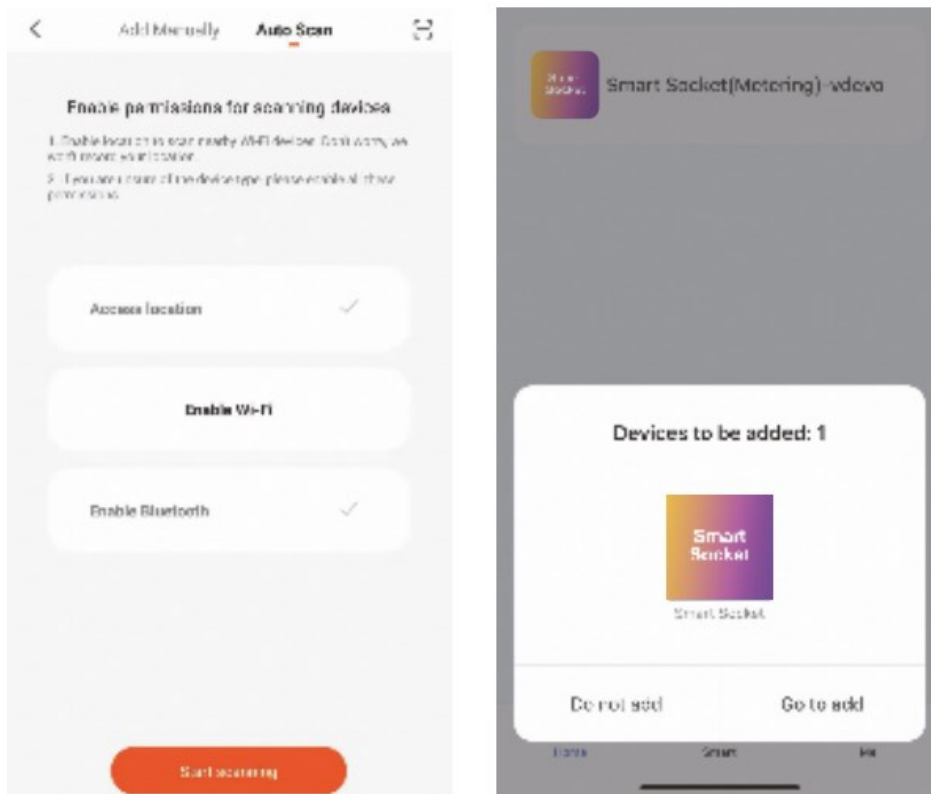
Press the on/off button on the Wi-Fi smart socket. The LED will flash rapidly green.



Note: If the LED does not flash, try resetting the device

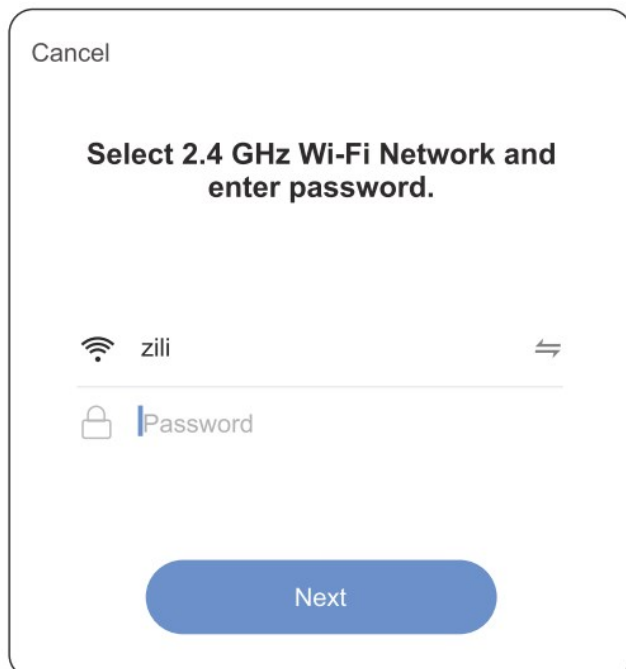
Auto Scan:

While the green LED is flashing, the Bluetooth connection will automatically find the device when you open Smart Life.



Enter password

Search for the Wi-Fi hotspot and enter the hotspot password.



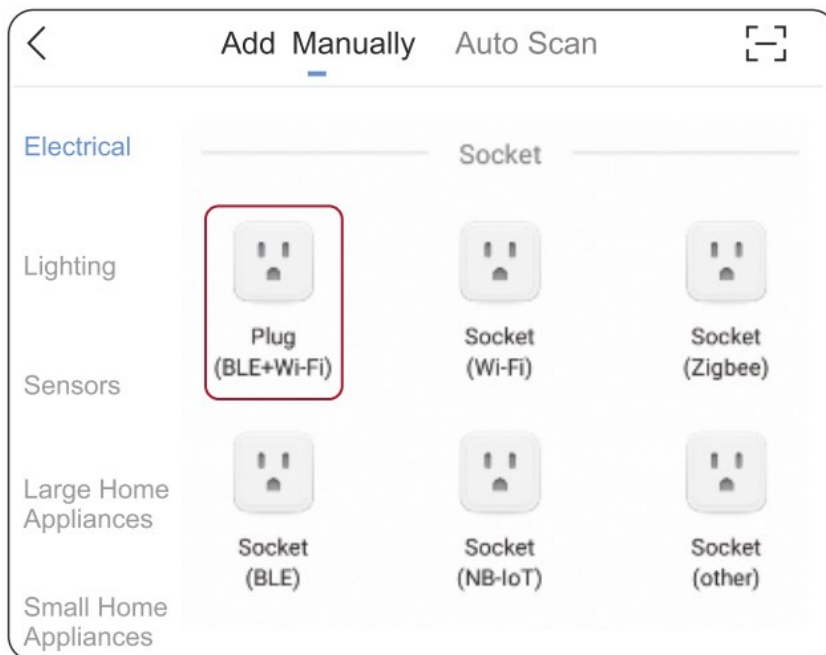
Tap Next. Observe that the device is connecting to the application

Add Manually:

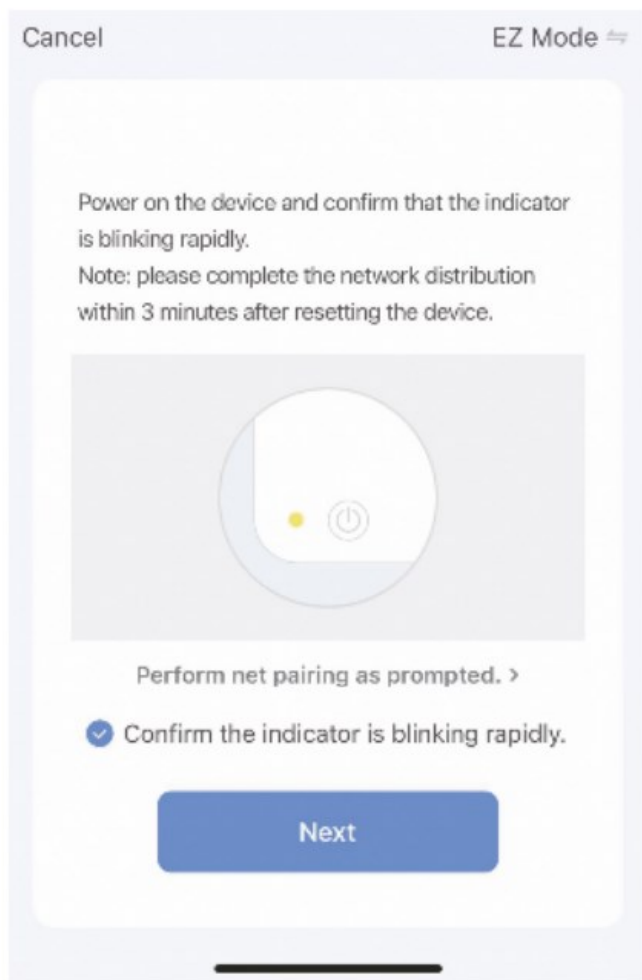
1. Tap Add Device or tap “+” on top right corner.



2. Select device type Socket (Wi-Fi).

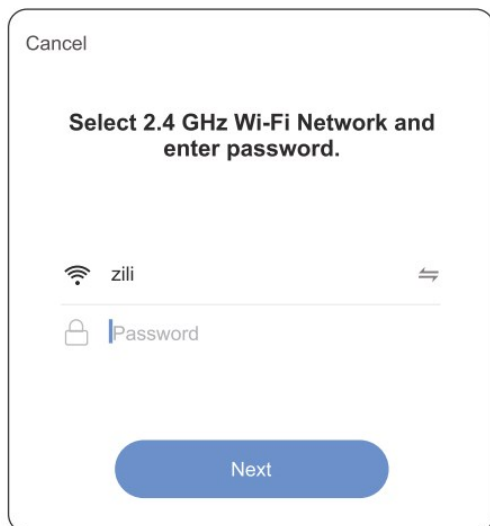


Set up the device



Enter Password

Search for the Wi-Fi hotspot and enter the hotspot password



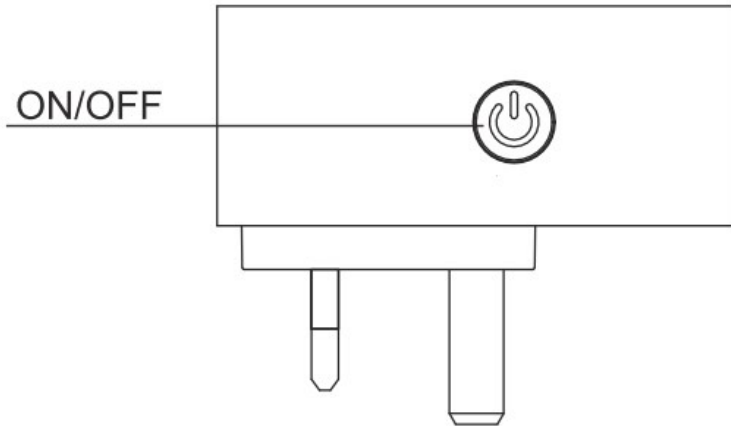
Tap Next. Observe that the device is connecting to the application.

Reset

If the Wi-Fi smart socket fails to respond to commands, it may need to be reset.

1. Unplug the Wi-Fi smart socket from the mains outlet.

2. Plug the device back into the mains outlet and turn on the outlet power switch.
3. Press and hold the Manual Control Button until the LED indicator flashes quickly (between 5 s and 10 s).
4. Follow the steps above in Configuration on page 4 to set up the device.



Change Device Name

1. Tap Device List to see a list of connected devices.
2. Tap Modify Device Name and enter a new name for your Wi-Fi Smart Socket.

Note: If the Wi-Fi smart socket is going to be controlled by a Smart Speaker, choose an unambiguous, clear sounding name.

Share Devices

1. In Profile, tap Device Sharing.
2. Tap Add.
3. Select the device to share.
4. Enter the telephone number or email address of the person you want to share with.
5. Tap Confirm.

Schedule

Schedules can be added to turn devices on or off at preset times and days of the week. The schedules can be once or repeated on certain days of the week.

To activate a schedule:

1. From the Devices screen, tap the Smart Socket, then select Schedule.
2. Tap Add Schedule.
3. Set up the desired Schedule.

Care and Maintenance

Firmware Update

New features may be added to the firmware embedded in your Wi-Fi smart socket. To check for updates to firmware:

1. Tap Info.
2. Tap Check for Firmware Update..

Remove Device

1. To remove the device from the application list, tap info () at the upper right-hand corner of the application.
2. Tap Remove Device to remove the device.

Documents / Resources

	optimum OP-WFUSB WiFi USB Socket [pdf] Instructions OP-WFUSB, OP-WFUSB WiFi USB Socket, WiFi USB Socket, USB Socket, Socket
---	--

Manuals+.