



OPTICLIMATE PRO3 Smart Remote Controller User Guide

[Home](#) » [OPTICLIMATE](#) » OPTICLIMATE PRO3 Smart Remote Controller User Guide 

Contents

- 1 OPTICLIMATE PRO3 Smart Remote Controller
- 2 Product Information
- 3 Product Usage Instructions
- 4 Installation
 - 4.1 Connecting the Smart Remote Controller
 - 4.2 Control 1 Opticlimates remotely
 - 4.3 Control 2 or more Opticlimates remotely
- 5 USING PRO3/PRO4 APPLICATION
 - 5.1 Controlling PRO3/PRO4 Aircos
 - 5.2 USING PRO3/PRO4 APPLICATION
- 6 Available Accessories
- 7 Documents / Resources
 - 7.1 References
- 8 Related Posts



OPTICLIMATE PRO3 Smart Remote Controller



Product Information

The Smart Remote Controller Pro3/Pro4 is a device designed and engineered in Holland by OptiClimate. It allows users to remotely operate their OptiClimate(s) from anywhere in the world. This controller is connected to the OptiClimate(s) via a cable and can be controlled through a computer or smartphone via the internet.

Product Usage Instructions

Installation

The Smart Remote Controller ensures that you can operate your OptiClimate(s) remotely (from anywhere in the world). This means that your climate system can be controlled at all times. The Smart Remote Controller is placed near the OptiClimate(s) and connected to the OptiClimate(s) with a cable. A computer or smartphone (remotely) communicates via the internet with the Smart Remote Controller, which controls the OptiClimate(s).

Connecting the Smart Remote Controller



Power

Connect the power supply and USB connector from the remote cable to the Smart Remote controller.



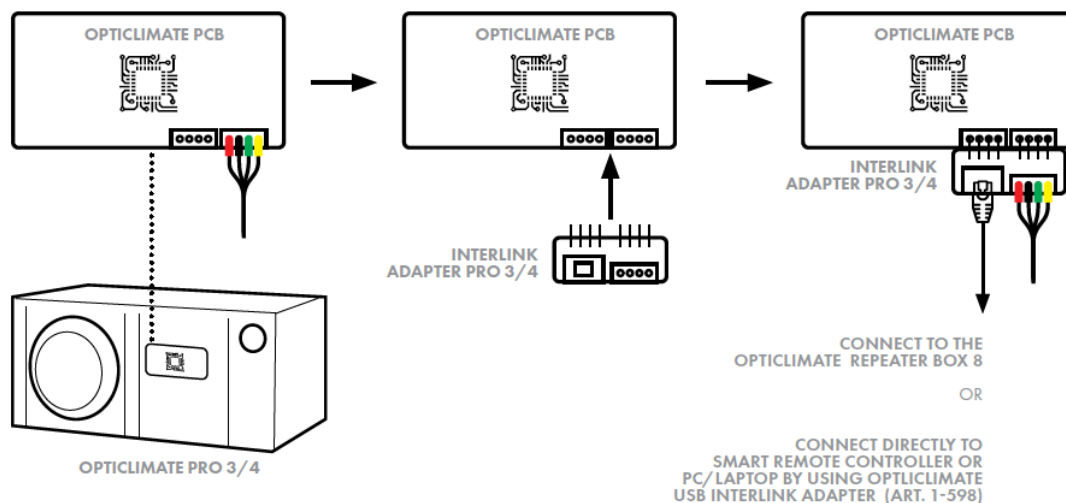
Connections

At the back of the Smart Remote Controller you find the USB, HDMI, Ethernet and power supply connections.

Control 1 Opticlimat remotely

An Opticlimat Pro3 or Pro4 needs installation of an Interlink Adapter (Art. 1-597) on the communication-port in the Opticlimat Pro3 or Pro 4.

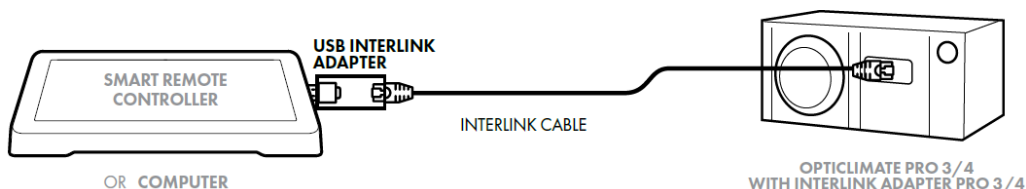
Installation of the Interlink Adapter Pro 3/4:



Control 1 Opticlimat remotely: Connect the USB Interlink Adapter to the USB-port at the Smart Remote Controller (or Computer). Use a Black Interlink Cable and install an Interlink Adapter PRO3/4 in your Opticlimat to connect the USB Interlink Adapter with your Opticlimat PRO3 or PRO4.

What do you need to connect 1 Opticlimat:

- Article 1-7801 EU or 1-7801 UK Revomax Smart Remote Controller
- Article 1-598 USB to Interlink Adapter
- 1 pc interlink cable correct length for distance between Smart Remote Controller and OptiClimat
 - 2-363 Interlink Cable Black 5mt
 - 2-364 Interlink Cable Black 10mt
 - 2-365 Interlink Cable Black 20mt
 - **For longer lengths, the interlink cables can be connected with:**
 - 2-367 Interlink Coupler standard (not waterproof)
 - 2-368 Interlink Coupler waterproof
- Article 1-597 Interlink Adapter Pro 3/4



Control 2 or more Opticlimates remotely

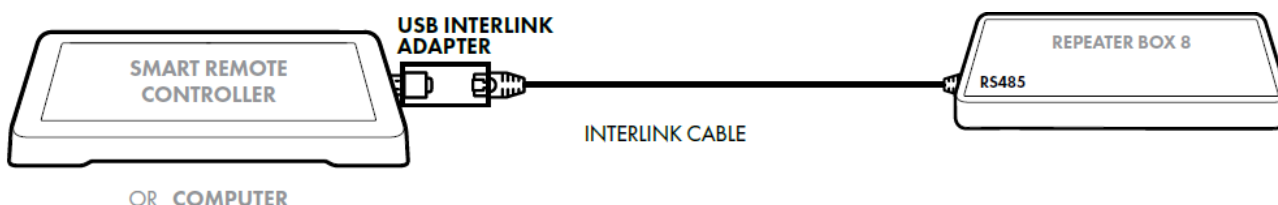
Connect your Smart Remote Controller (or Computer) with a Repeater Box 8. A Repeater Box distributes the communication from the Smart Remote Controller over 8 channels. Because of this it is possible to control up to 8 OptiClimates. Connect the USB Interlink Adapter to the USB-port of the Smart Remote Controller (or Computer). Use a Black Interlink Cable to connect the USB Interlink Adapter with your Repeater Box 8 at the RS485-port.

What is the distance between the Repeater Box and the Smart Remote Controller?

Less than 5mt: connect with supplied USB cable 5mt

More than 5mt: connect with a black Interlink cable + USB Interlink Adapter

- 2-364 Interlink Cable Black 10m
- 2-365 Interlink Cable Black 20mt



A black Interlink cable is required per OC to connect the OC to the Repeater Box. What is the distance between the Repeater Box and each (separate) OC?

- 2-363 Interlink Cable Black 5mt
- 2-364 Interlink Cable Black 10mt
- 2-365 Interlink Cable Black 20mt

For larger lengths, the interlink cables can be connected with:

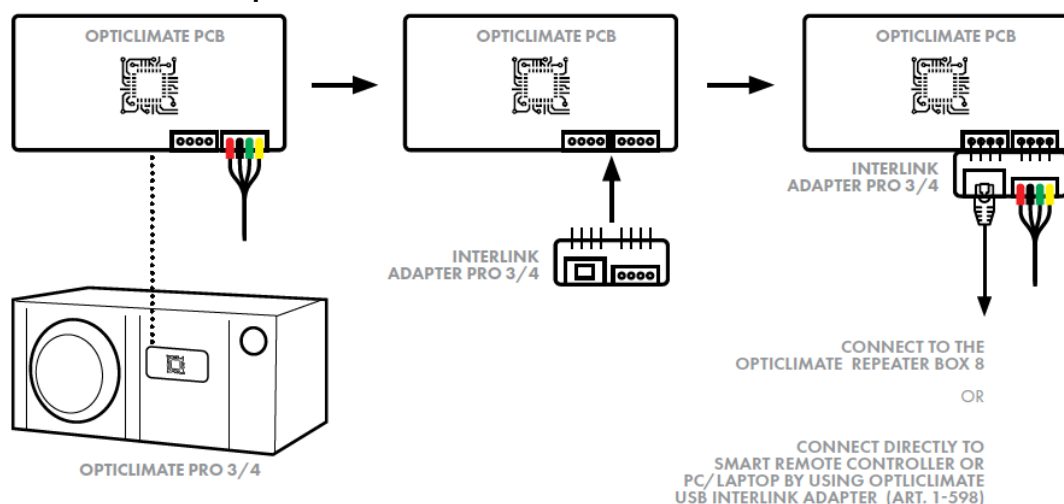
- 2-367 Interlink Coupler standard (not waterproof)
- 2-368 Interlink Coupler waterproof

If an OptiClimate PRO3 or PRO4 is connected, there must be an interlink adapter on each OC must be mounted in order to connect the interlink cable to the OC.

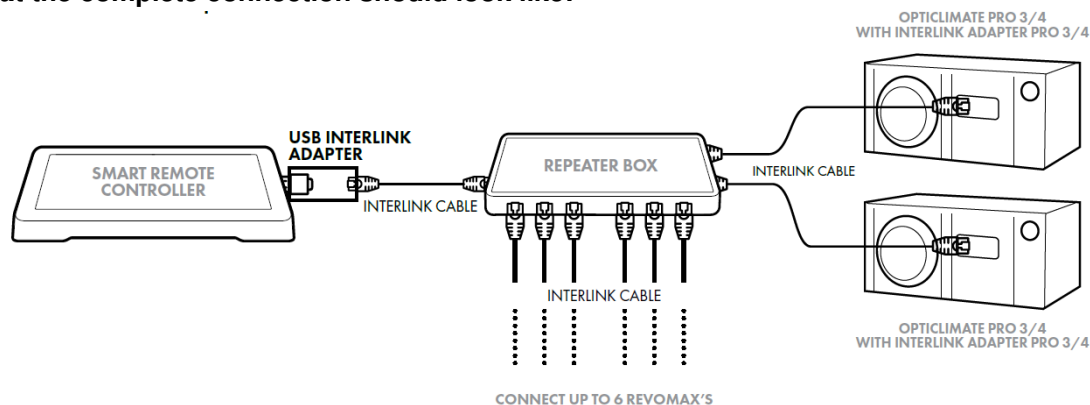
- 1-597 – Interlink Adapter Pro 3/4

The black Interlink cable plugs directly into the OptiClimate Revomax, so a Interlink Adapter not necessary.

Installation of the Interlink Adapter Pro 3/4:



This is what the complete connection should look like:



What do you need to connect 2 to 8 Opticlimates:

- Article 1-7801 EU or 1-7801 UK Revomax Smart Remote Controller
- Article 1-592 EU or 1-592-UK Repeater Box (incl 5mt USB cable)
- Article 1-597 Interlink Adapter Pro3/4 , number equal to number OC Pro3/4
- Interlink cable per OC connection

Correct length for distance between Repeater Box and each individual OptiClimate

- 2-363 Interlink Cable Black 5mt
- 2-364 Interlink Cable Black 10mt
- 2-365 Interlink Cable Black 20mt
- **For longer lengths, the interlink cables can be connected with:**
 - 2-367 Interlink Coupler standard (not waterproof)
 - 2-368 Interlink Coupler waterproof

Optional:

- Article 1-598 USB to Interlink Adapter
if the distance between the Smart Remote Controller and Repeater Box more than 5 metres.
 - 2-364 Interlink Cable Black 10mt
 - 2-365 Interlink Cable Black 20mt
- Choose the right length for the interlink cable to connect the Repeater Box and Smart Remote Controller as the distance is more than 5 meters.

Note: If the distance between the Repeater Box and the Smart Remote Controller is less than 5 meters, use the supplied USB cable to connect them.

For OptiClimate Revomax, the black Interlink cable can be directly plugged into it without the need for an Interlink Adapter.

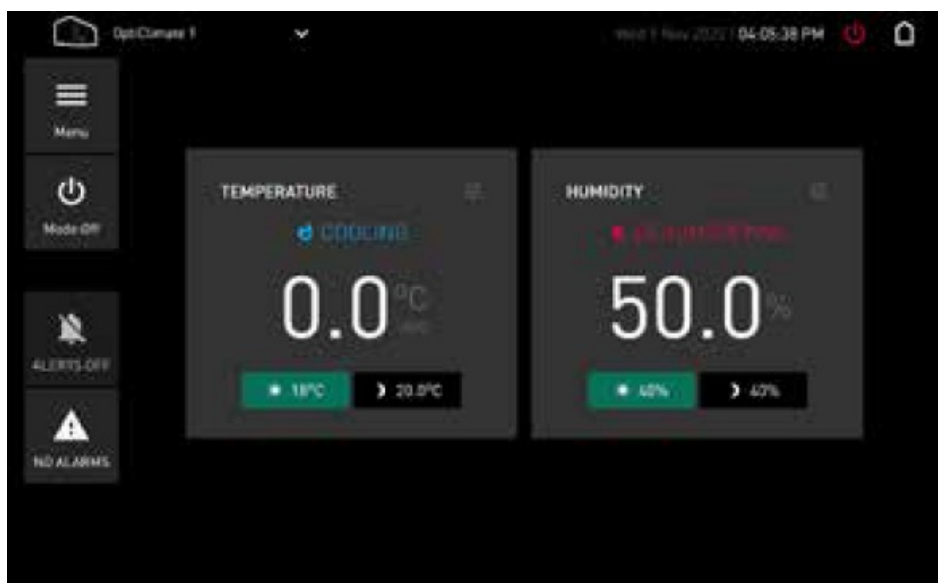
Make sure to follow the provided diagrams and instructions for a complete and proper installation.

USING PRO3/PRO4 APPLICATION

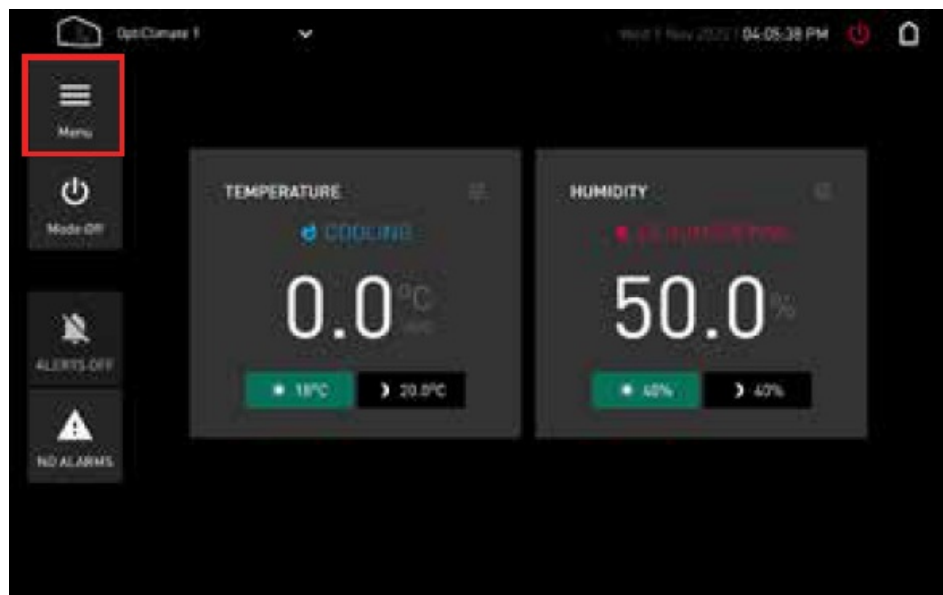
Controlling PRO3/PRO4 Aircos

The Smart Remote Controller has also a application installed to control PRO3/PRO4 aircos. To start the PRO3/PRO4 application you have to do the following steps.

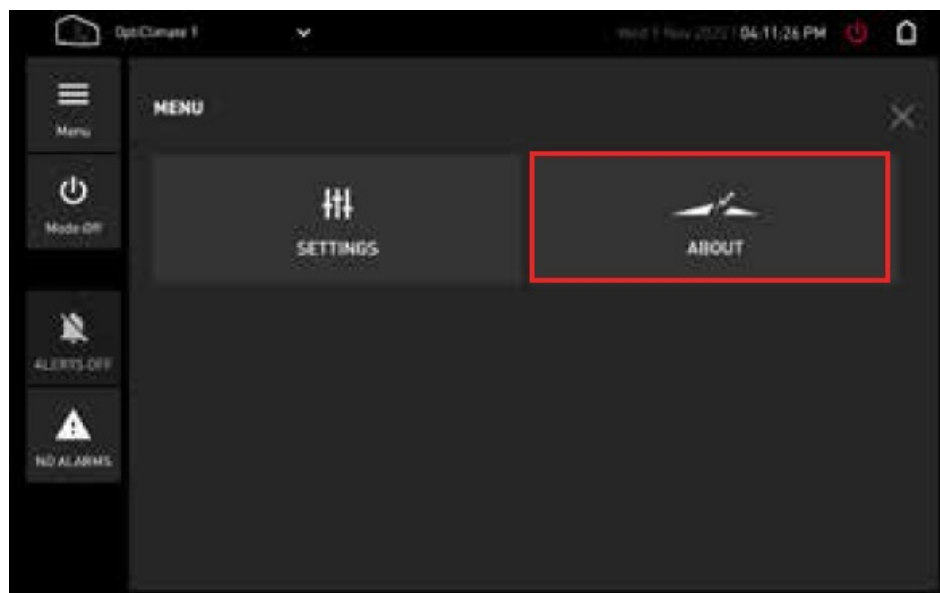
- If you start the Smart Remote Controller, you will see the main screen of Revomax application.
main screen



- Press the 'menu' button to go to the menu screen.
main screen with menu-button highlighted

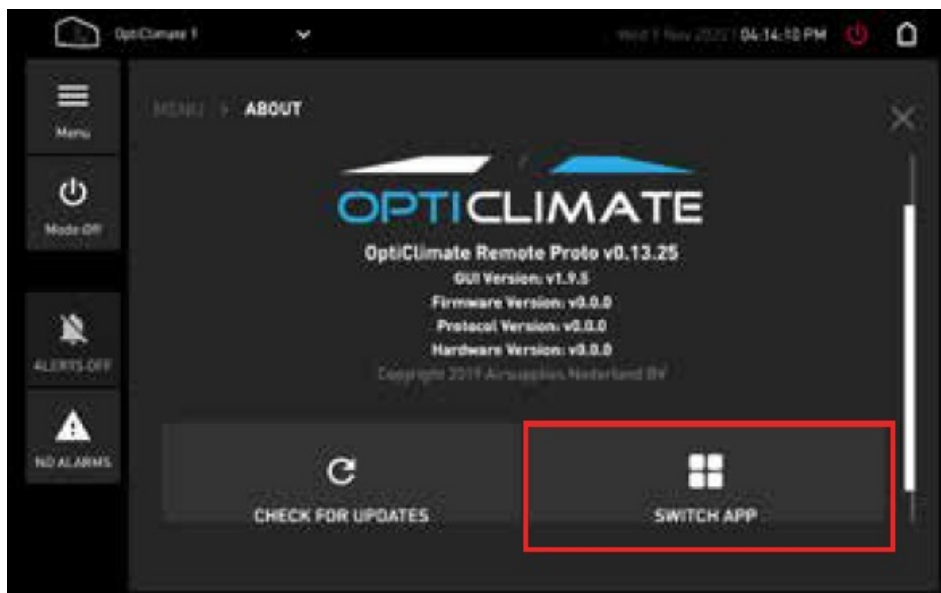


- Press the 'about' button to open the about-screen menu screen with about button



USING PRO3/PRO4 APPLICATION

- Press the button 'switch app' to switch to the PRO3/PRO4 application about screen with switch-app button

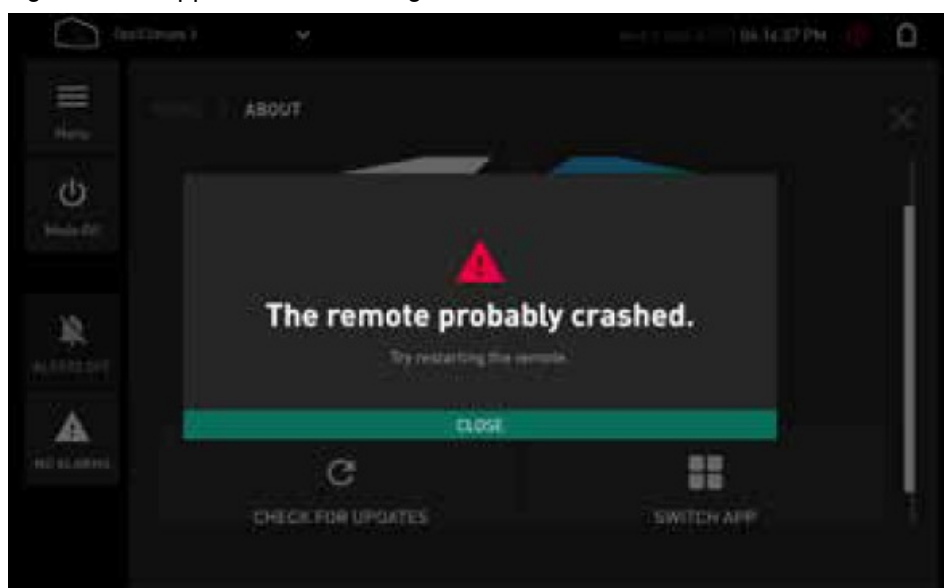


- Confirm the warning message to accept switching to the PRO3/PRO4 application warning dialog if you really want to switch to the other application



- Some error messages may be displayed. You don't have to do anything. The revomax application will eventually close.

A warning message that the application is shutting down



After accepting the error, the Smart Remote Controller will restart. Restarting will take some time, so be patience.

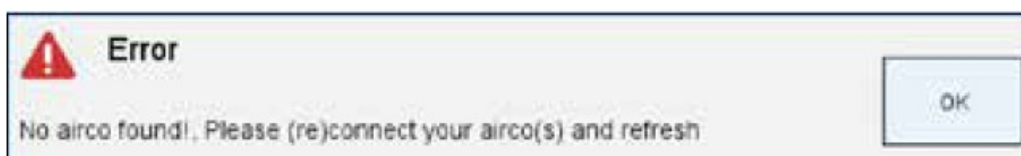
(Some background processes will be stopped, but this isn't visible for the user).
The PRO3/PRO4 application will start after about 20 seconds.

PRO3/PRO4 application

- PRO3/PRO4 aircos are connected by a network called modbus. At start of the application, the application will scan the modbus to detect connected aircos.



- When no aircos are found, an error will be displayed



- If no aircos are found, check the cabling, and also if the aircos are turned on.
No message will appear when everything went fine.

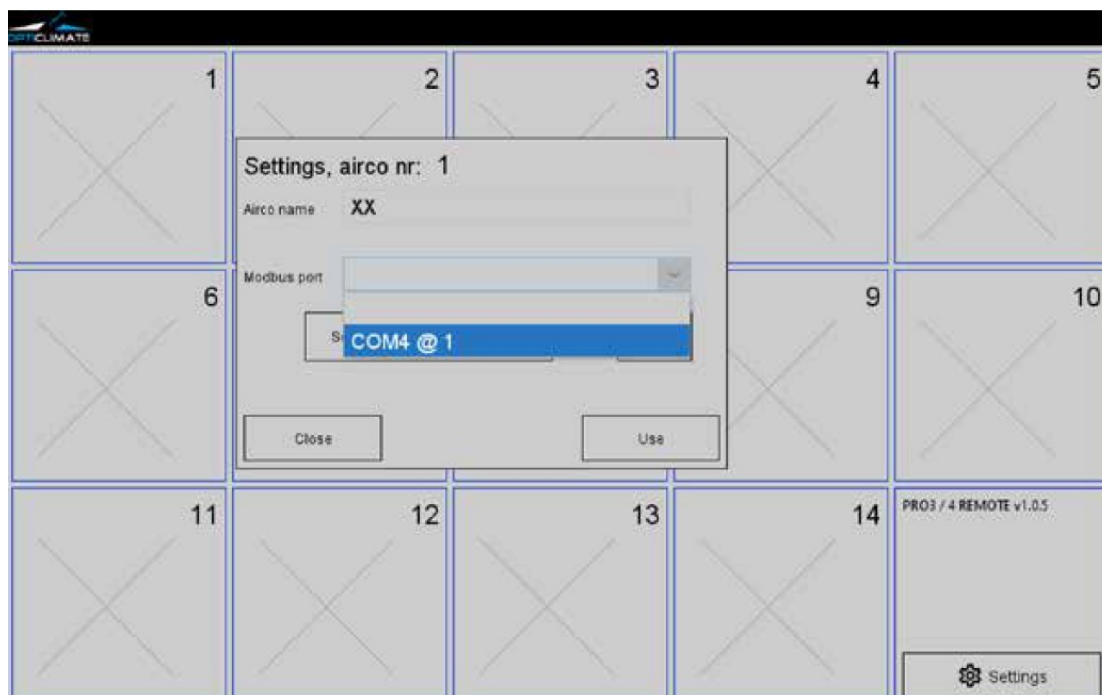


When the application is started the first time, the application will not know how to address the aircos. So an info message will appear

- To map an airco, you have to select one of the 14 tiles and set the modbus-port of the airco. The selected tile will be the placeholder of the airco



- By selecting a tile, the mappings dialog will appear.

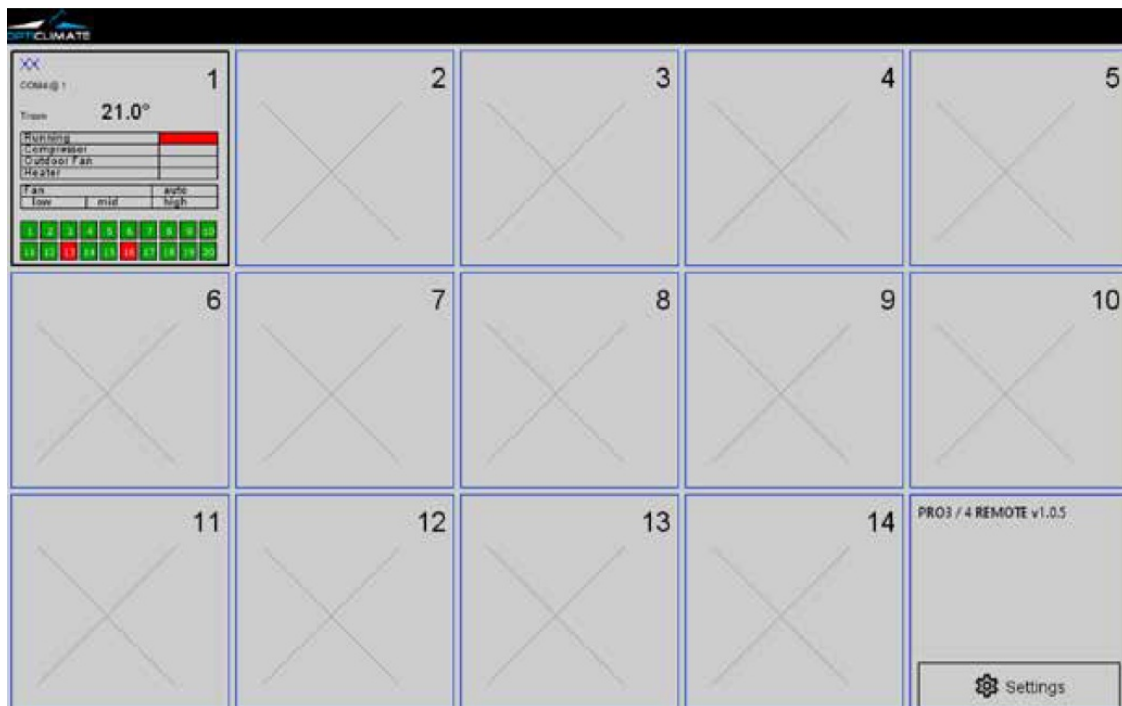


- At this dialog you can selection the modbus-port and set the airco name. Use the 'help' button to show the possible dip-switch setting of the airco. You can set the modbus-port-address with the dipswitch of the airco.



- When the mapping went OK, a small remotecontrol representation will appear in the selected tile.
- When the application is started with airco's connected, the mainscreen tiles will be filled with a small representation of a airco remote control.

You can see the status of each airco at a glance.



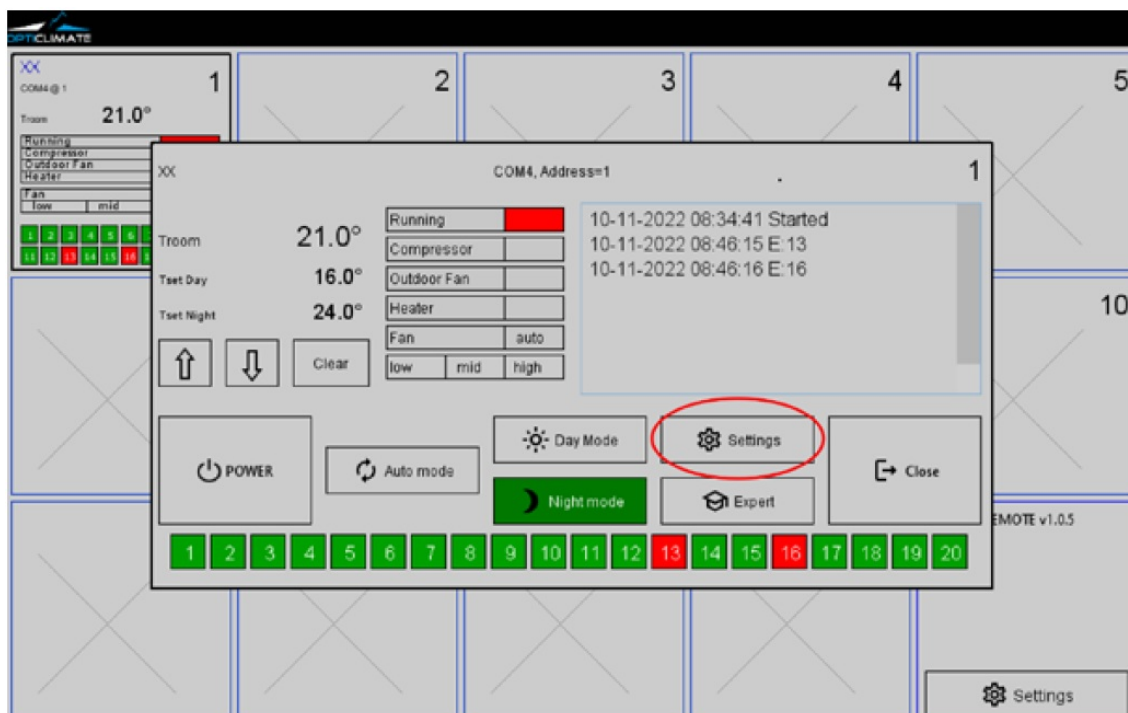
- When pressing a title with an airco, a dialog will appear to control the selected airco.



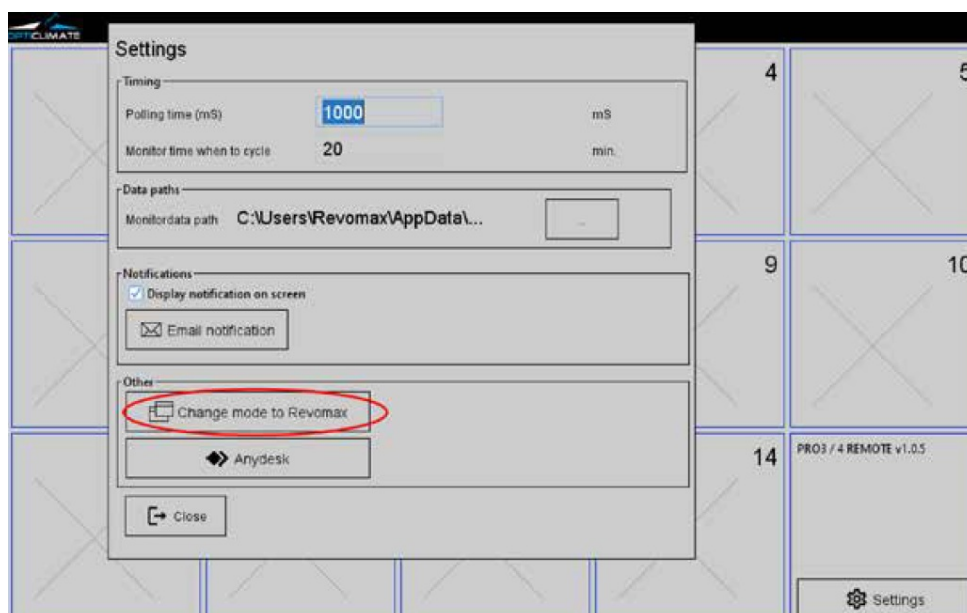
Switch to the Revomax application

- At this dialog, you will see actual airco information and buttons to control the airco.

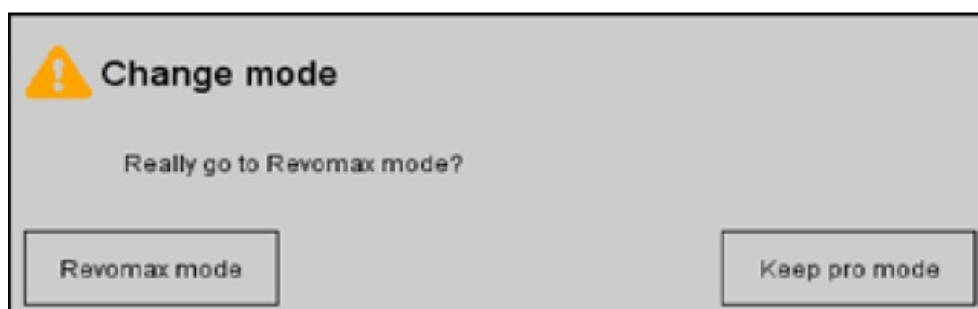
If you want to switch to the Revomax application, you have to change to Revomax mode. You can switch to this mode in the settings dialog. You can go to the settings dialog using any of the 'settings' buttons.



- A setting dialog will appear. At this dialog you have to select the 'Change mode to Revomax' button.



- A warning dialog will appear. To accept press the Revomax mode button.



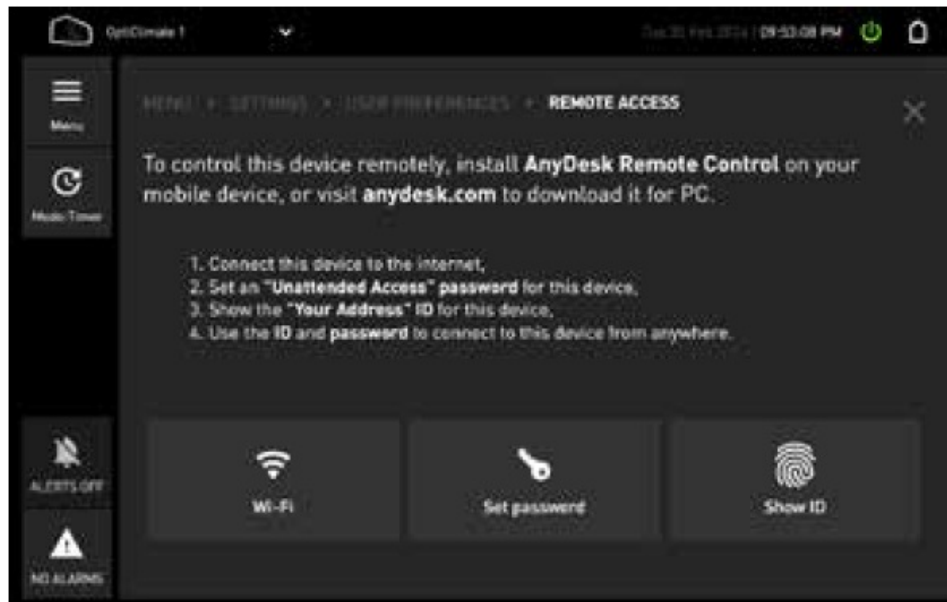
- The Remomax Remote Controller will reboot.

Remote control via AnyDesk

The Revomax can be remotely controlled using any device connected to the internet. The remote controller uses the Anydesk application by default and you can access the unit using MIFI (modum using a sim card), Hotspot on a mobile cellphone, WIFI and LAN.

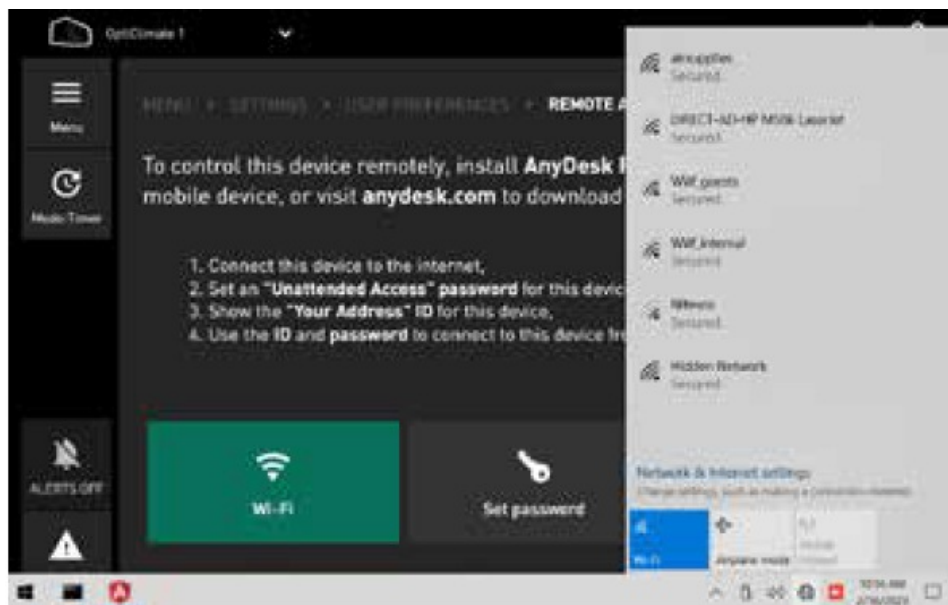
In a LAN setup, connect the LAN cable between the Smart Remote Controller and you modem or router. Connect the Smart Remote Controller to the network.

- Go to Menu > Settings > User preferences > Remote Access



- Tap "Wi-Fi" to open Network & Internet settings and connect to your internet access-point. You can skip this step if you use wired internet.

In a wireless setup (MIFI, Hotspot or MIFI) use the manual of the wireless device you are using and connect through Anydesk.



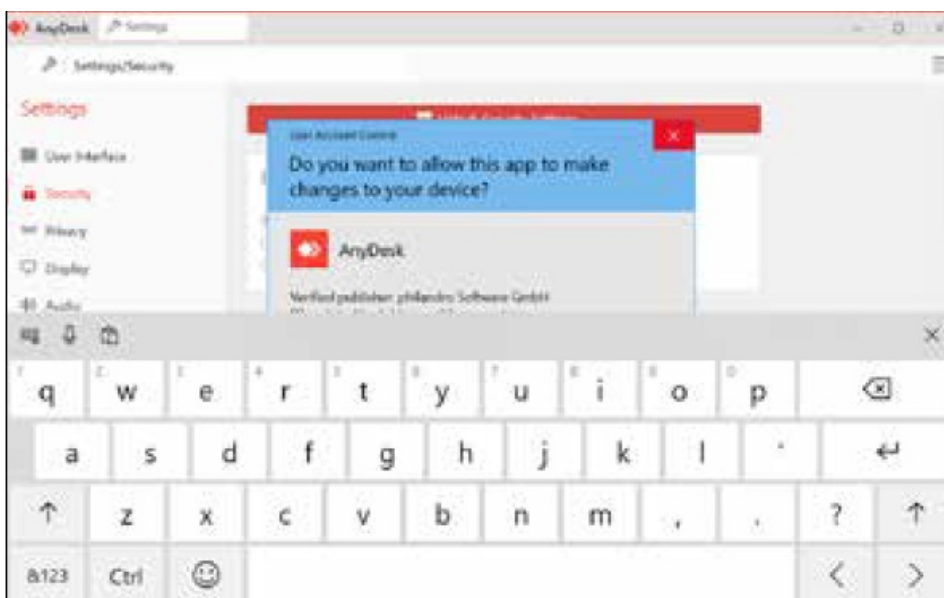
- Tap "Set password"



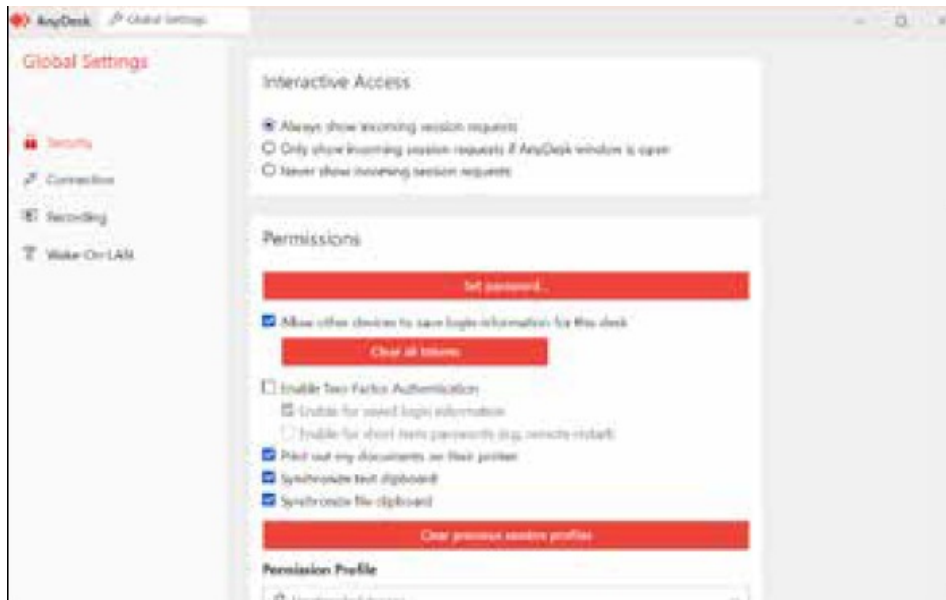
- Click “Unlock Security Settings ...”



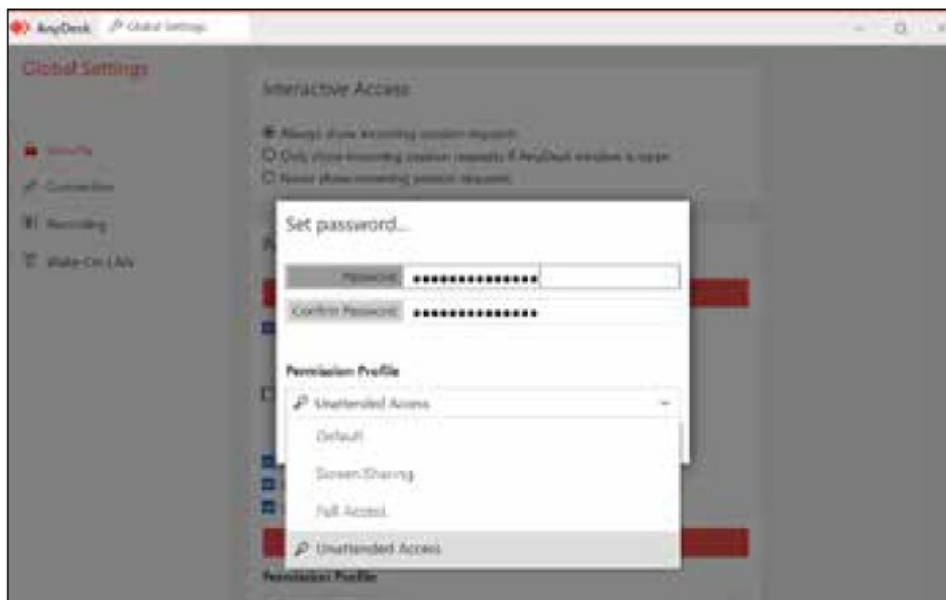
- Tap the password field to open the on-screen keyboard. Unfortunately this obscures the password field, but that does not matter. Enter the password, which is either Maxi Controller for the smart remote controller with the golden startup logo or Revomax for the smart remote controller with the silver startup logo (the first letter must be upper-case). Press Enter , or close the keyboard and tap “Yes”.



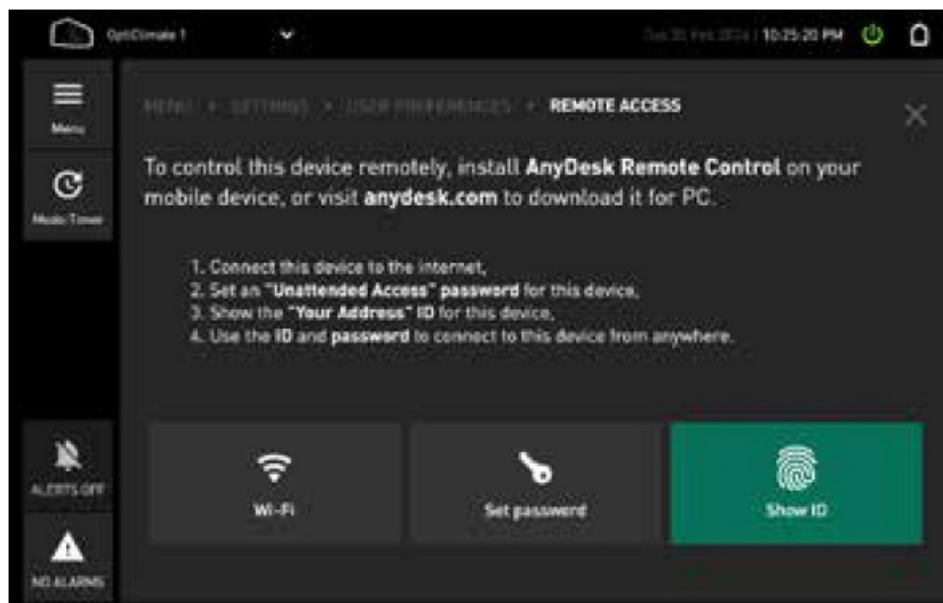
- Tap “Set Password...”



- Enter the password you want to use to remotely access this controller in both fields and close the keyboard. Then tap on the “Permission Profile” box and change it to “Unattended Access” (This is important!)



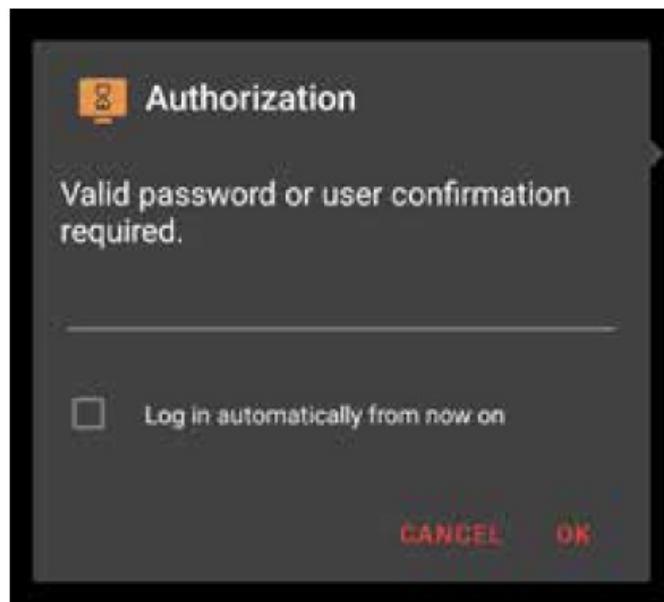
- Close both the settings panels by tapping the cross in the top right, then tap “Show ID”



- Enter this number into the AnyDesk client (installed in the previous section) and press connect. You can now close the AnyDesk panels on the controller.

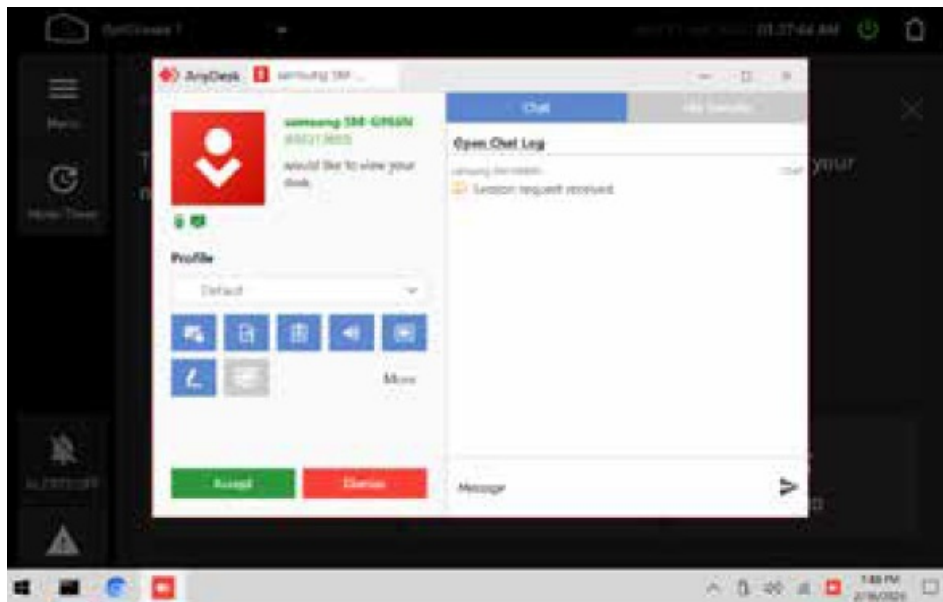


- Use your AnyDesk client to test remote access to your controller now. It may take a minute before the connection succeeds.



If you get "Client Offline" you have mistyped the number or either your controller or AnyDesk client has lost internet connection. Do not attempt the option "Power On" as this has no effect.

- When connection succeeds, the controller shows the incoming connection. There's no need to press Accept on the controller; entering the password on the AnyDesk client will do the same. Your client will remember the 9-digit ID from now on.



Available Accessories

- **1-597**

Interlink Adapter Pro 3/4

An Opticlimat PRO3 or PRO4 needs installation of an Interlink Adapter on the communication-port in the Opticlimat PRO3 or PRO4. (required per connected Opticlimat Pro3 or Pro4)

- **1-598**

USB Interlink Adapter

Use to Connect with the USB-port at the Smart Remote Controller (or Computer). (required when Smart Remote Controller -> 5mt Repeater Box 8)

- **1- 597**

REPEATER BOX 8

Necessary when more than 2 Opticlimates need to be monitored. With this box you can connect mutiple Revomax airco's to a computer / Revemax Remote. It will repeat Modbus signals and connects up to 8 devices

- 2- 370 Black Interlink Cable 2mt
- 2-363 Black Interlink Cable 5mt
- 2-364 Black Interlink Cable 10mt
- 2-369 Black Interlink Cable 20mt
- 2-367 RJ45 Interlink Coupler (not waterproof)
- 2-368 RJ45 Interlink Coupler waterproof

Engineered & Designed in Holland

Manual version 06 20 2023

www.opticlimat.com

Documents / Resources



[OPTICLIMATE PRO3 Smart Remote Controller](#) [pdf] User Guide
PRO3, PRO4, PRO3 Smart Remote Controller, Smart Remote Controller, Remote Controller, C
ontroller

References

- [Home | Opticlimat](#)
- [Home | Opticlimat](#)

Manuals+.