

OPTEX OVS-02GT Virtual Loop 2.0 User Guide

Contents

[1 OVS-02GT Program Quick Start Guide](#)

[1.1 ANDROID](#)

[1.2 APPLICATIONS](#)

[1.2.1 Installation Diagrams](#)

[2 Documents / Resources](#)

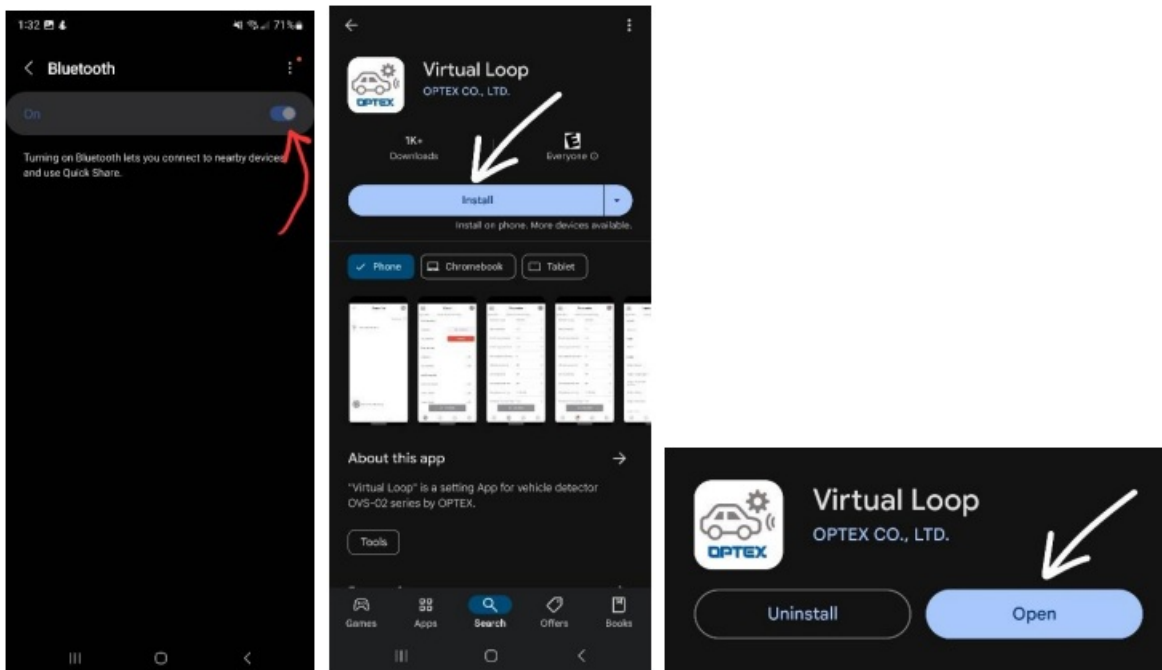
[2.1 References](#)

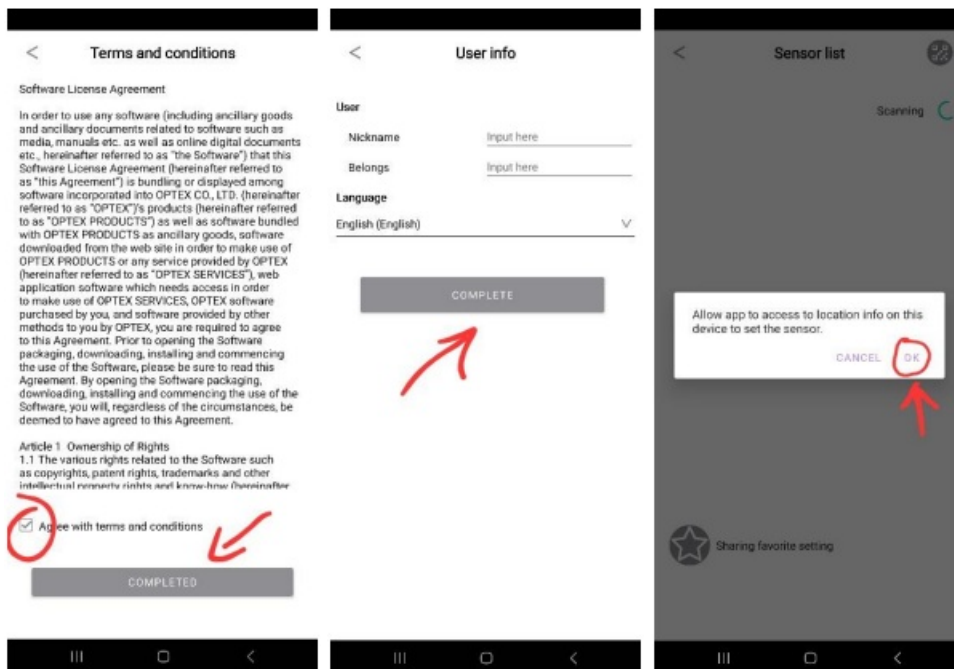
[3 Related Posts](#)

OVS-02GT Program Quick Start Guide

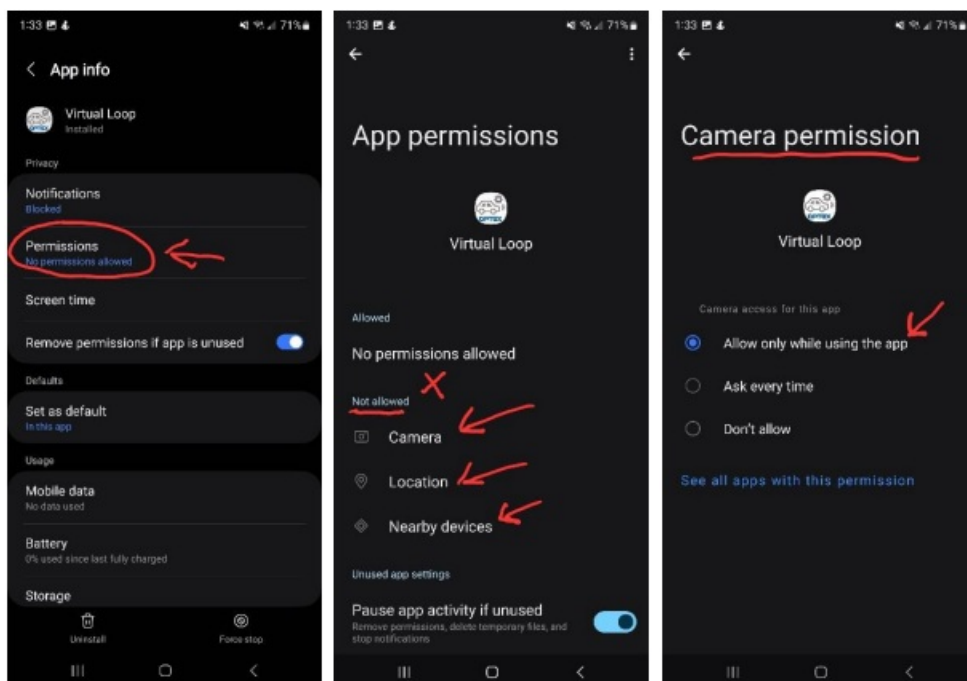
ANDROID

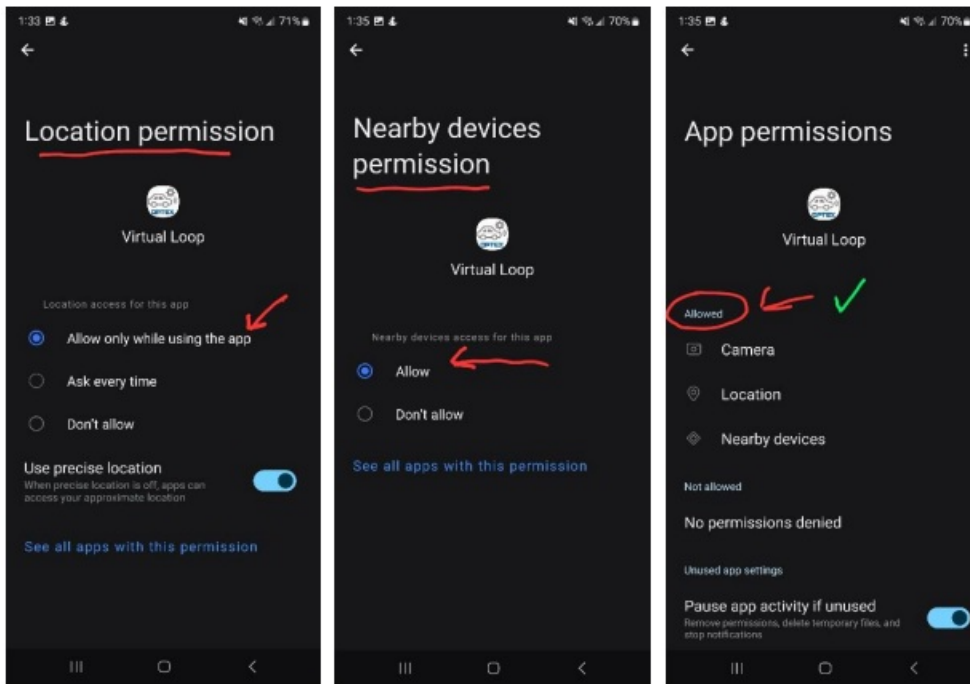
- **STEP 1:** Download app, and Open OPTEX virtual loop (white icon with a car)



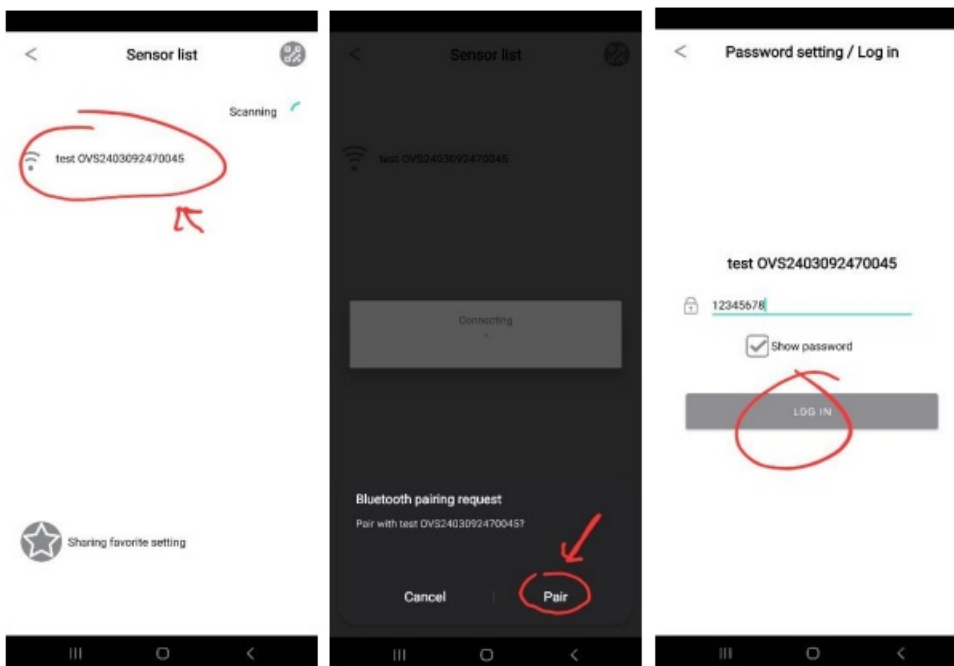


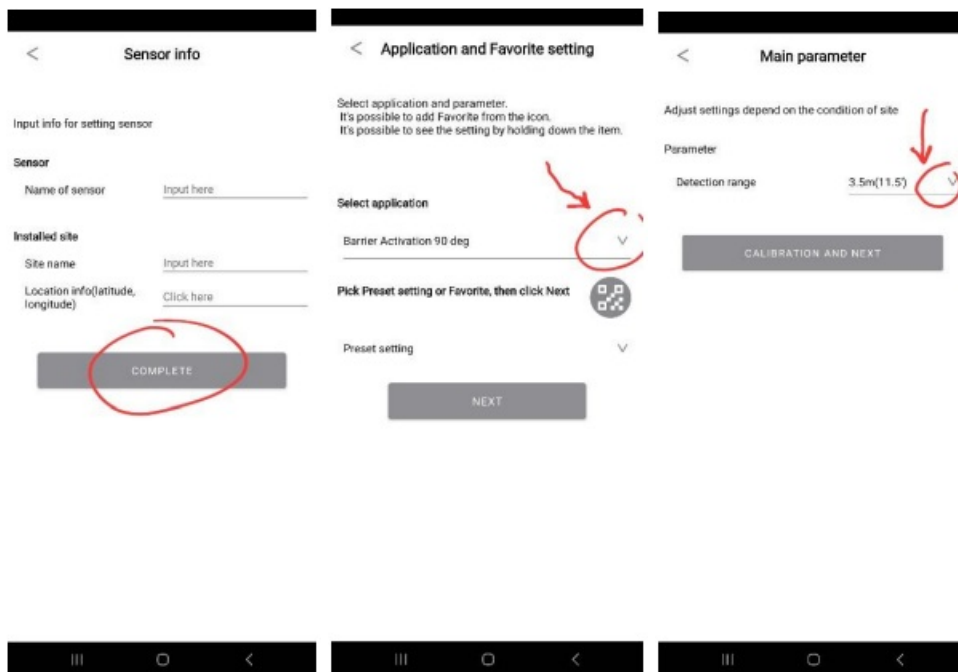
• STEP 2: Allow permissions





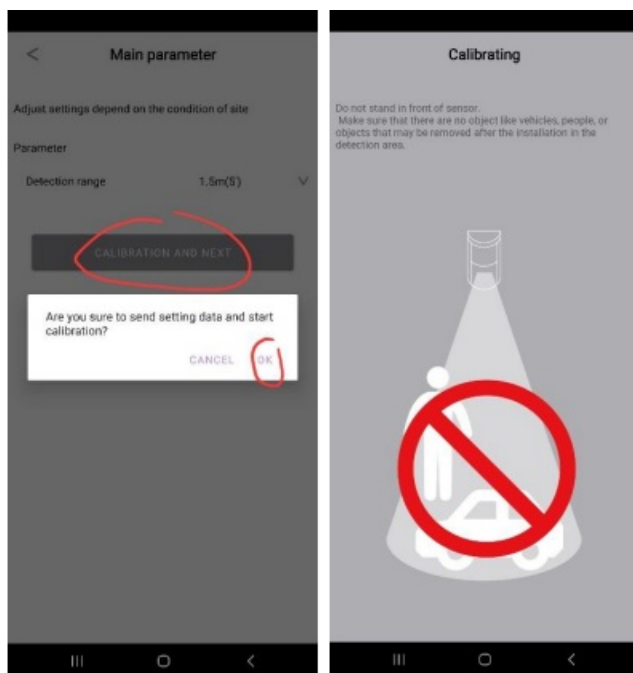
- **STEP 3:** Sensor list, pick the sensor you want to program.



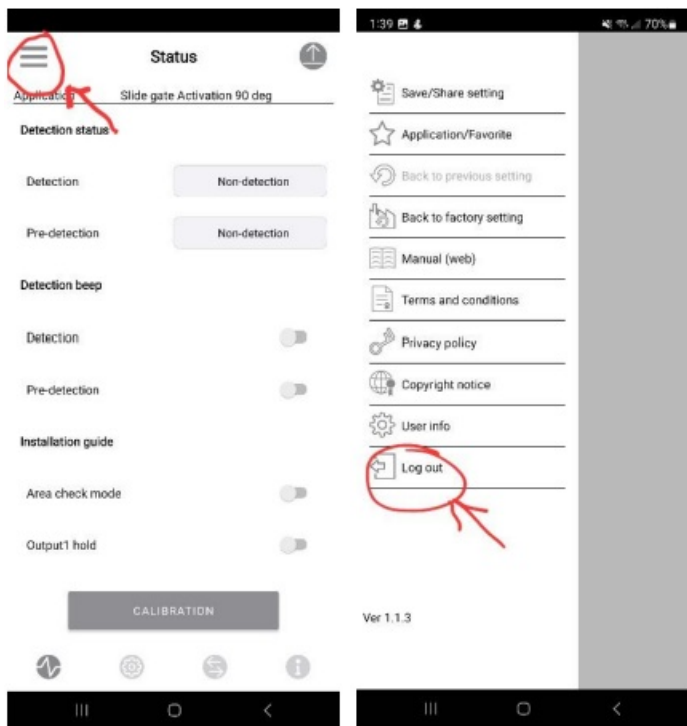


*Note: Input 8-digit password, Default: 12345678

- **STEP 4:** Calibrate, (*Note: Clear area before calibrating. If sensor is still flashing blue, calibration did not complete)



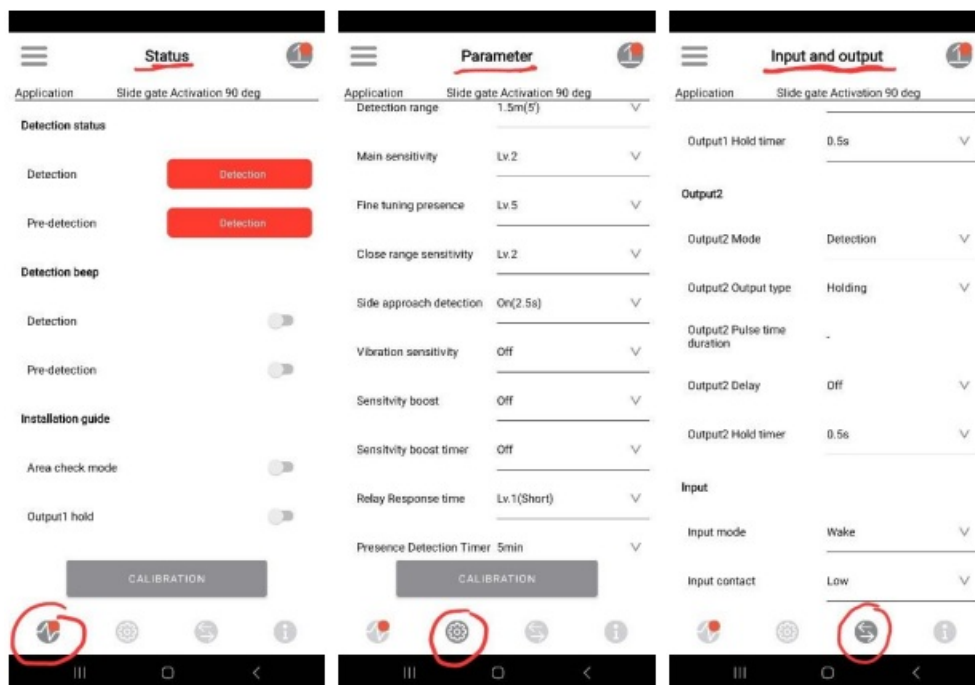
- **STEP 5:** Log out, go to the main page, the 3 lines at top left.

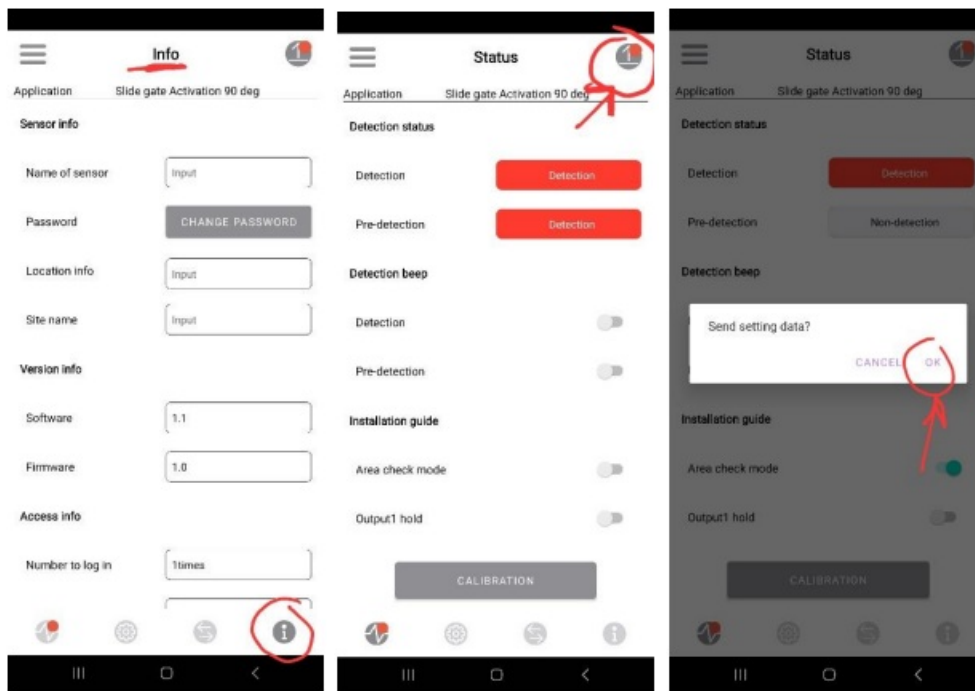


- **STEP 6:** Test the sensor

Note: relay will be in the close state until programed.

- If further programming is needed, reconnect to the sensor and fine tune the settings. Repeat until desired result is achieved.

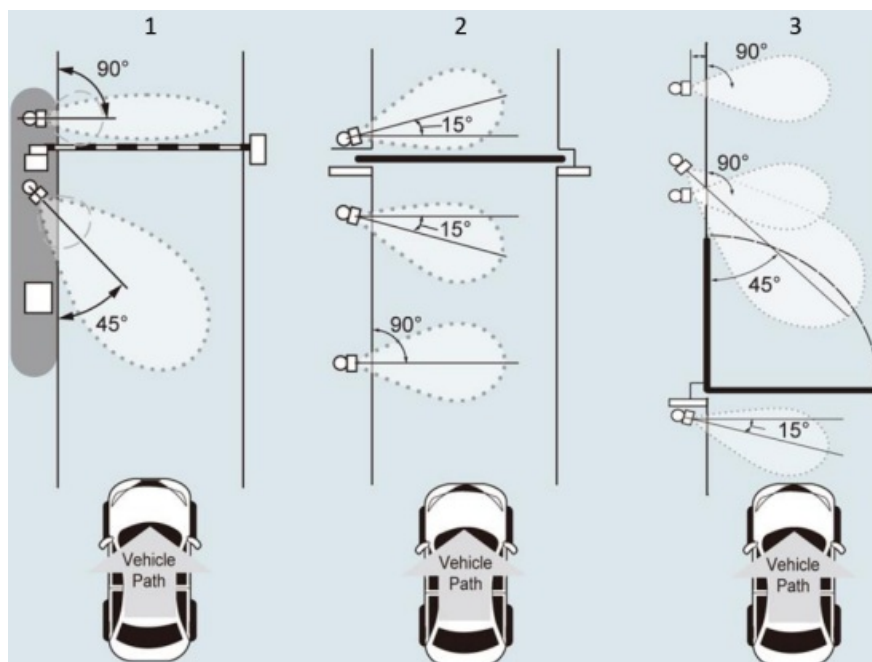




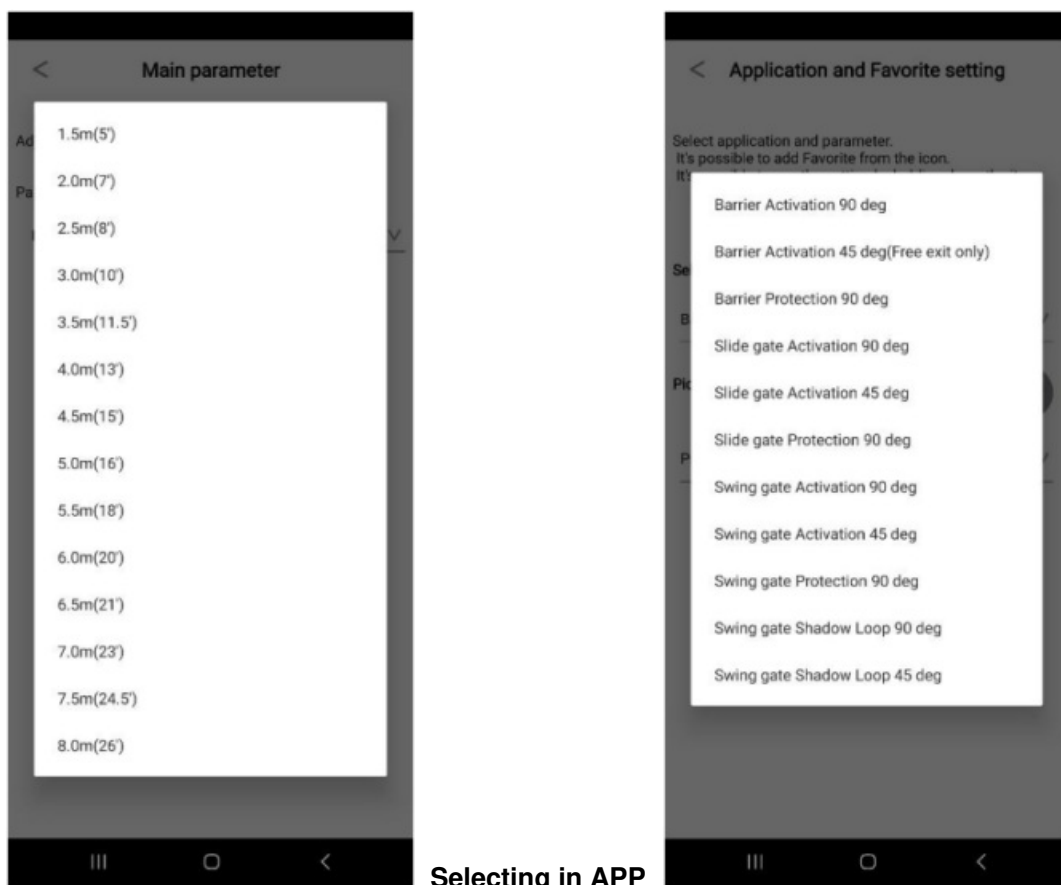
*Note: If you make any changes, tap the arrow up icon at the top right-hand corner and make sure to calibrate before testing.

APPLICATIONS

Installation Diagrams




1. Barrier Gate
2. Slide Gate
3. Swing Gate



- Optional: if you want the indicator on the sensor on, go to the input/output tab, the 2 arrows pointing in opposite directions on the bottom of the app page. Turn the indicator switch on, top right arrow with a red dot touch on that, send the information.

Documents / Resources

	<p>OPTEX OVS-02GT Virtual Loop 2.0 [pdf] User Guide OPT-OVS-02GT, OVS-02GT, OVS-02GT Virtual Loop 2.0, OVS-02GT, Virtual Loop 2.0, Loop 2.0</p>
---	---

References

- [User Manual](#)

[Manuals+](#), [Privacy Policy](#)

This website is an independent publication and is neither affiliated with nor endorsed by any of the trademark owners. The "Bluetooth®" word mark and logos are registered trademarks owned by Bluetooth SIG, Inc. The "Wi-Fi®" word mark and logos are registered trademarks owned by the Wi-Fi Alliance. Any use of these marks on this website does not imply any affiliation with or endorsement.