



GLOW App



OPT7 GLOW App User Guide

[Home](#) » [OPT7 GLOW](#) » OPT7 GLOW App User Guide 

Contents

- [1 OPT7 GLOW App](#)
- [2 How To Connect](#)
- [3 SYSTEM SETTINGS](#)
- [4 FAQ \(KNOWLEDGE BASE\)](#)
- [5 Documents / Resources](#)
 - [5.1 References](#)



OPT7 GLOW App



Download the free “OPT7 GLOW” App

- App iOS (12+) available on the App Store



- Android (8+) available on Google Play

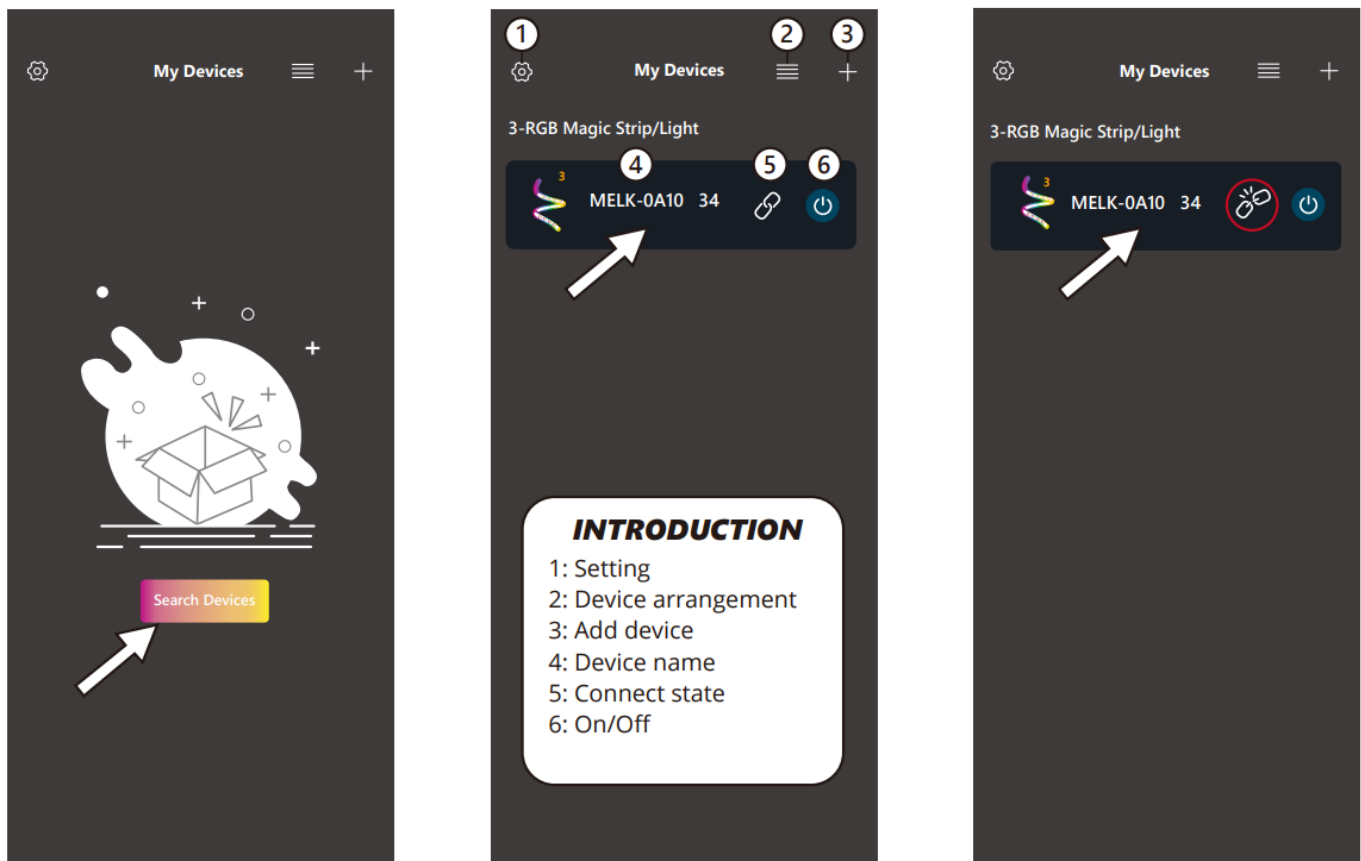
NOTICE

OPT7 GLOW supports the car media system with Bluetooth and Android Auto but does not support Apple Carplay.

How To Connect

STEP 1

First view the OPT7 GLOW. After installing the OPT7 light Kits open the OPT7 GLOW and keep the Bluetooth open then click “Search Devices” to connect.



STEP 2

OPT7 GLOW will detect OPT7 light Kits automatically. Click the device into the light control mode.

NOTICE

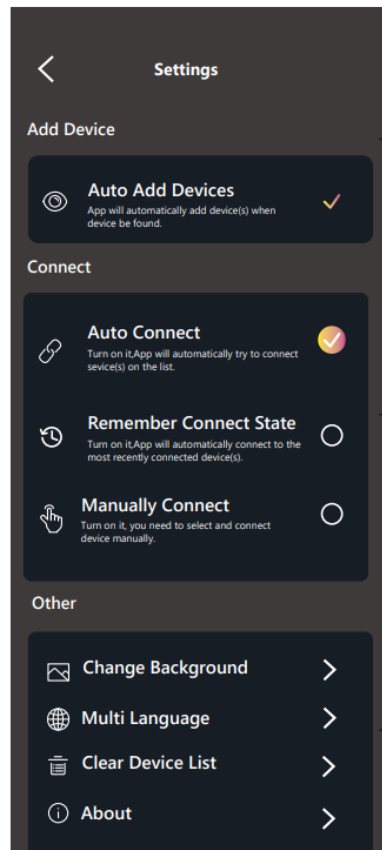
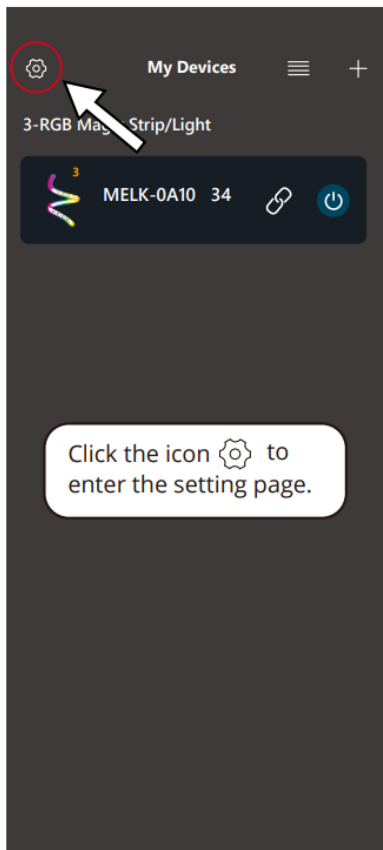
If the OPT7 GLOW shows the icon go, which means the device is not connected.

IMPORTANT

On the Android system, it needs to allow the Nearby Devices Permission to search the devices.

- OPT7 GLOW connects a maximum of 4 devices.
- If there is no device on the list, please check the Auto Add Devices.
- (See more system settings on the page 3.)

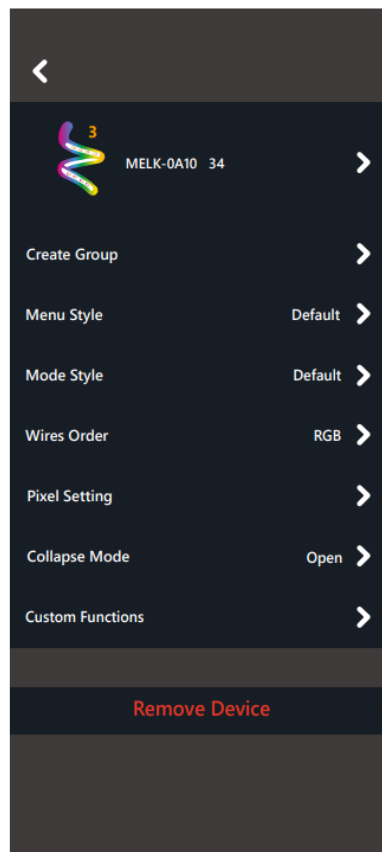
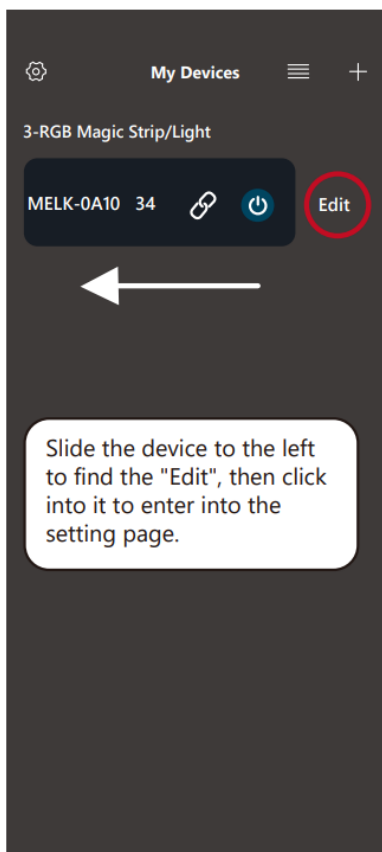
SYSTEM SETTINGS



INTRODUCTION 1
OPT7 GLOW will detect the OPT7 light kits automatically.
*Recommended to enable the function

INTRODUCTION 2
Auto Add Devices:
OPT7 GLOW will connect all devices on the list.
Remember Connect State
OPT7 GLOW will remember the last connected device(s) and light mode.
Manually Connect
OPT7 GLOW will not connect any devices until choosing one.

INTRODUCTION 3
Other settings:
Customized settings, including background, language, and clear device list.

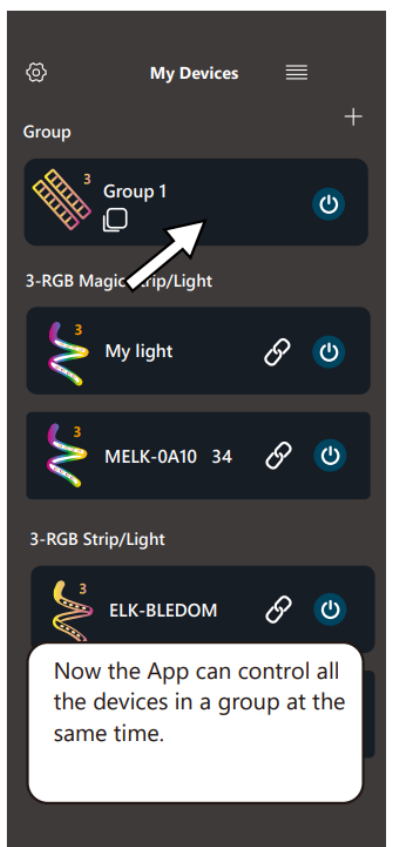
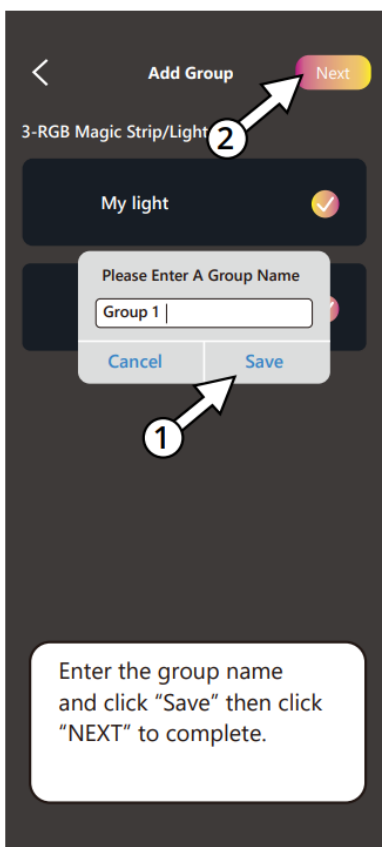
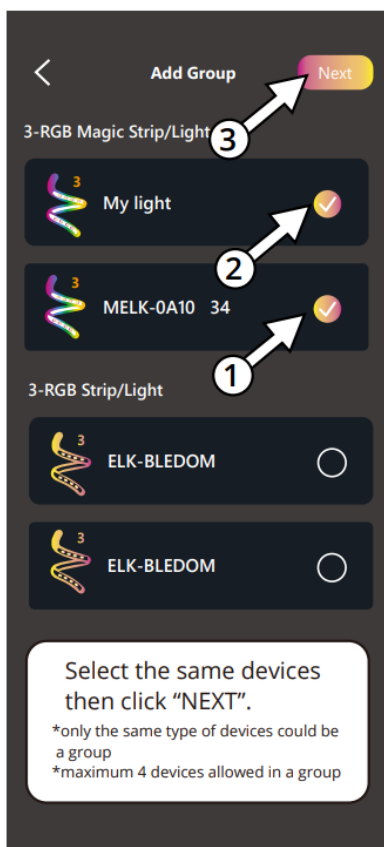
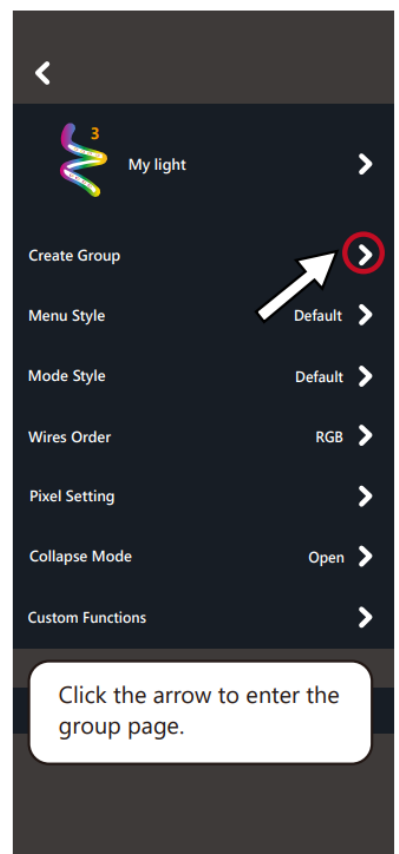
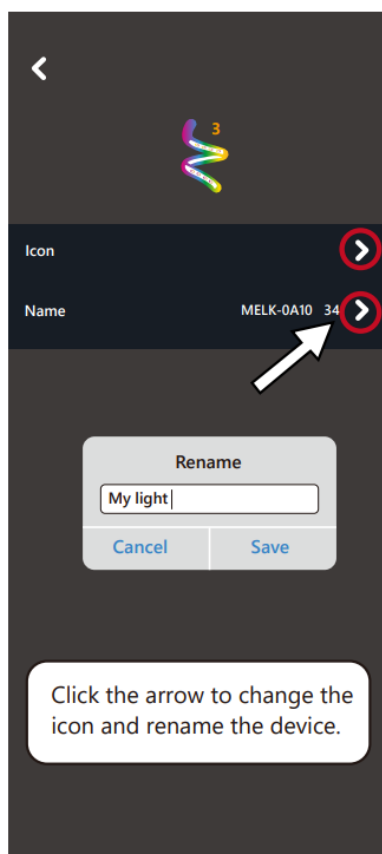
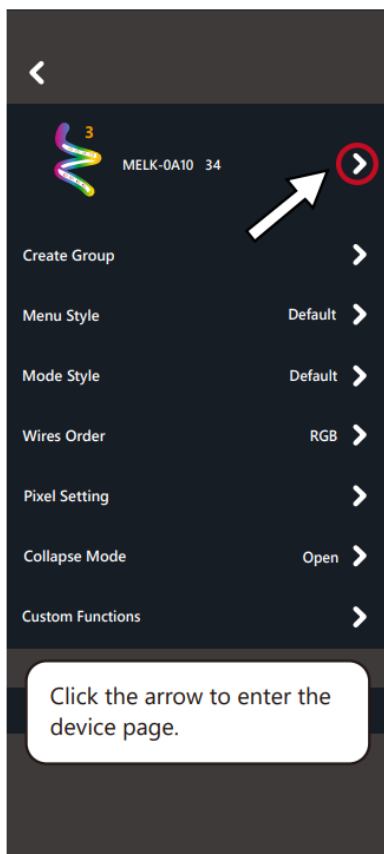


INTRODUCTION

- 1: Device setting (Icon /name)
- 2: Group setting
- 3: Menu Style setting (Default/Tab Bar/Beehive)
- 4: Light Mode Style (Default/GIF/Text)
- 5: Wire Setting (Adjust RGB order)
- 6: Pixel Setting (Not support)
- 7: Collapse Mode (Not support)
- 8: Custom Functions (Not support)
- 9: Remove Device (Clear and forget the device)

DEVICE SETTING

How To Rename the Devices and Create a Group



RGB MODE



1. Device name
2. Device setting
3. On/Off
4. RGB mode
5. Rhythm mode
6. Light mode
7. SScenemode
8. More information

RGB MODE

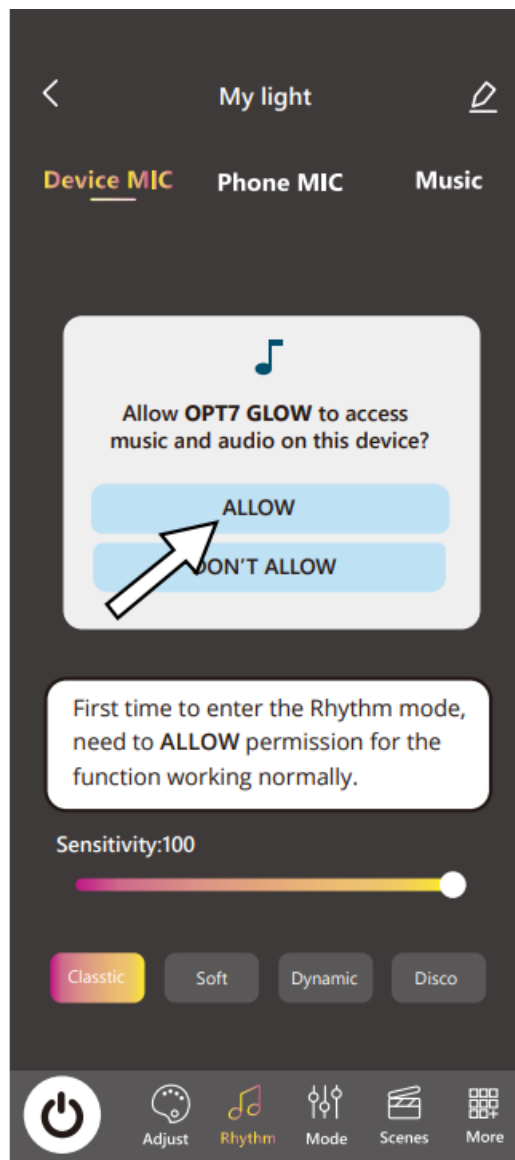
1. Touch to choose a color



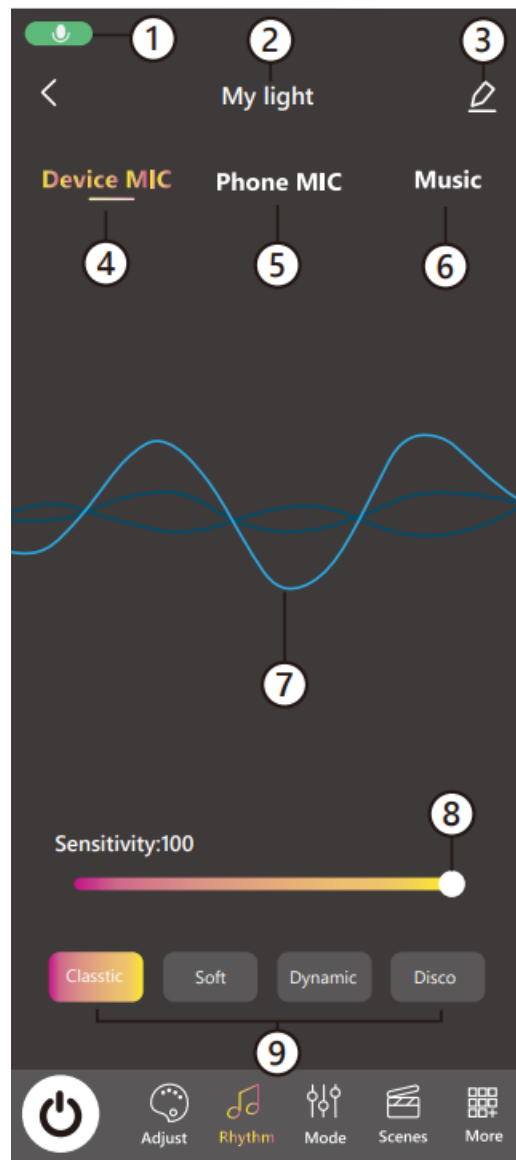
2. Shortcut color (6 color)
3. Favorite color (4 colors) (click then choose a color to create a shortcut; press the shortcut to delete)
4. Brightness adjust (0-100)

RHYTHM MODE-DEVICE A

1. Cellphone MIC is receiving (Not all cellphone support)



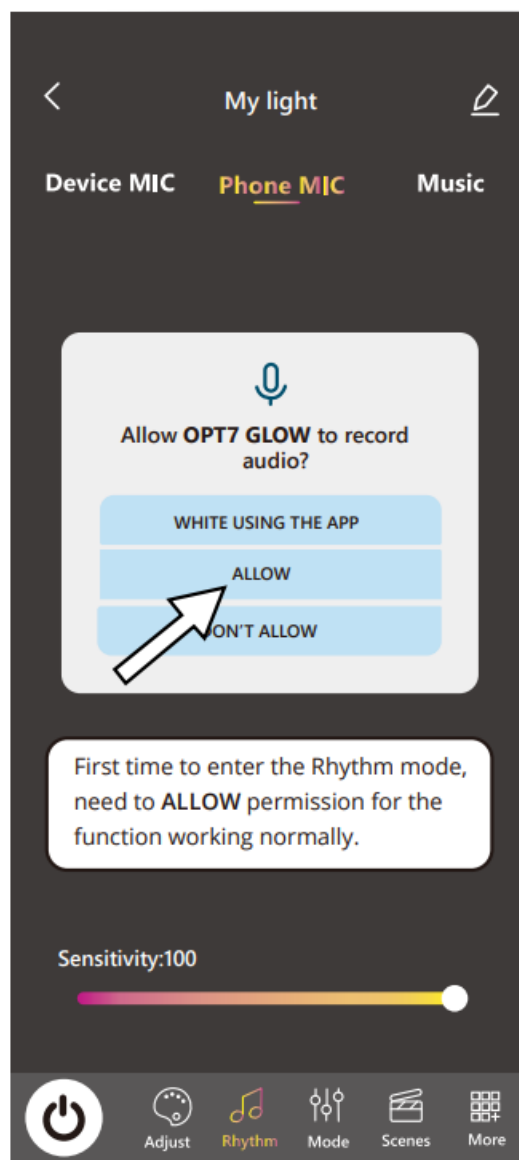
2. Device name
3. Device setting
4. Device MIC (use the control box of the OPT7 light kits to receive) OPTT
5. Phone MIC (use the cellphone to receive)

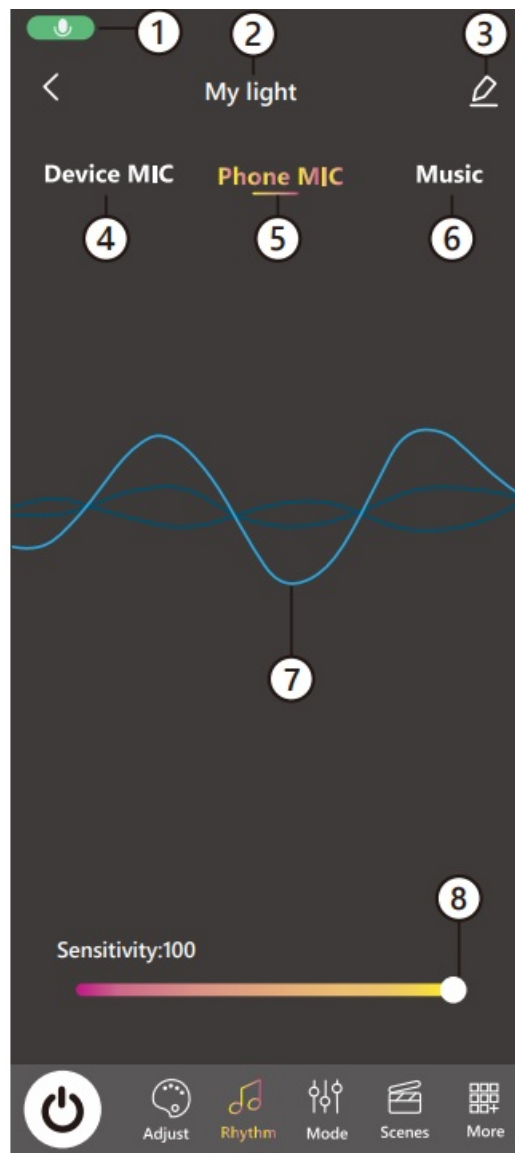


- 6. Music MIC (use the cellphone music)
- 7. Sound wave (changes with the audio)
- 8. Record sensitivity adjust
- 9. Light effect (4 modes) Not all OPT7 light Kits support the device MIC function.

RHYTHM MODE

- 1. Cellphone MIC is receiving (Not all cellphone support)





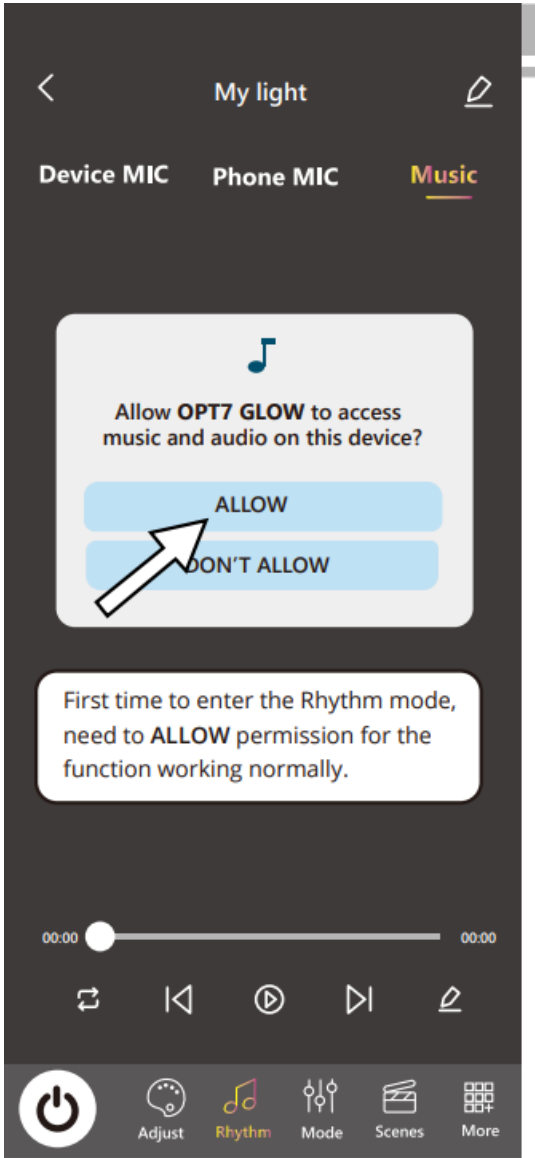
2. Device name
3. Device setting
4. Device MIC (use the OPT7 light to receive)
5. Phone MIC (use the cellphone to receive)
6. Music MIC (use the cellphone music)
7. Sound wave (changes with the audio)
8. Radio sensitivity adjust

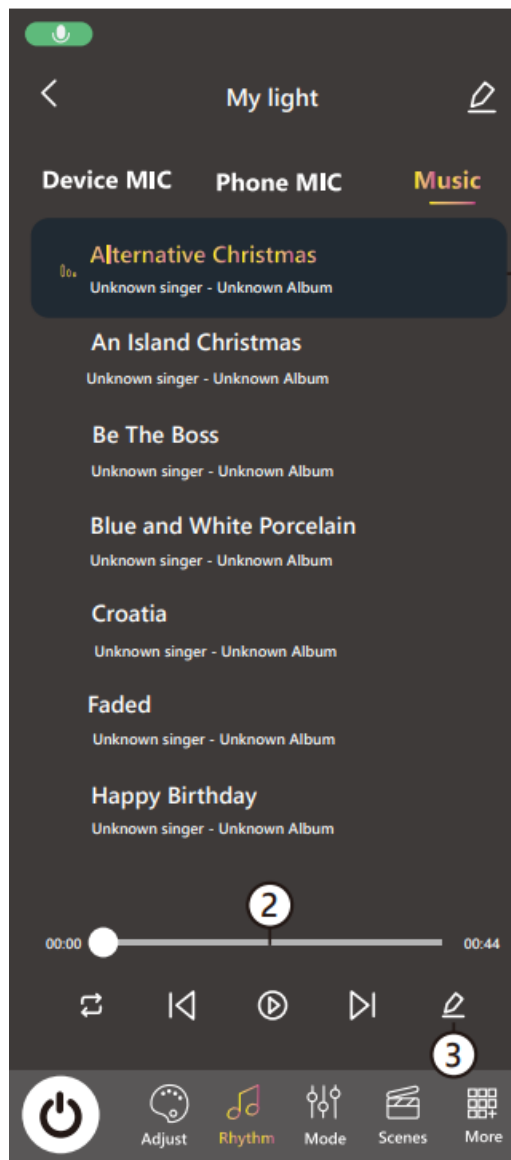
IMPORTANT

- The Phone MIC supports Android Auto only
- When using the Phone MIC, users must enable the background permissions.
- Phone MIC supports only a device or a group at once.

RHYTHM MODE-MUSIC MIC

1. Playlist (9 built-in songs)





2. Media player
3. Edit the playlist

HOW TO USE PHONE MUSIC ANDROID

The music files on the phone will be imported into the playlist automatically.

IOS

Need to connect to iTunes on a computer to download the music file to the iPhone.

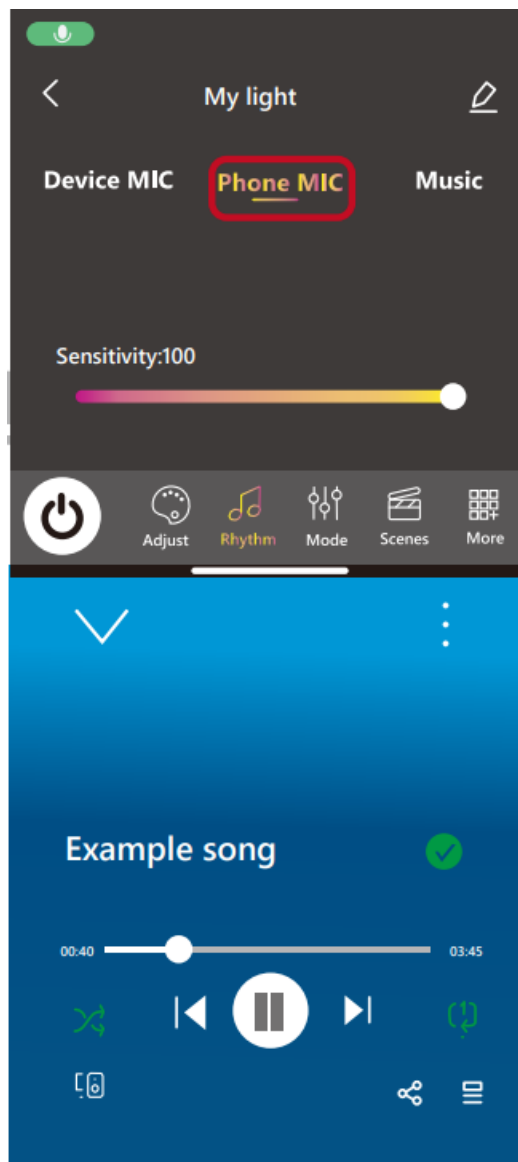
BACKGROUND PLAYING

The Phone MIC in the APP allows music to play in the background while users are using other Apps.

ANDROID SYSTEM SPLIT SCREEN

The OPT7 GLOW supports the split screen function so keep both the music app and the OPT7 GLOW on the screen, the function will work.



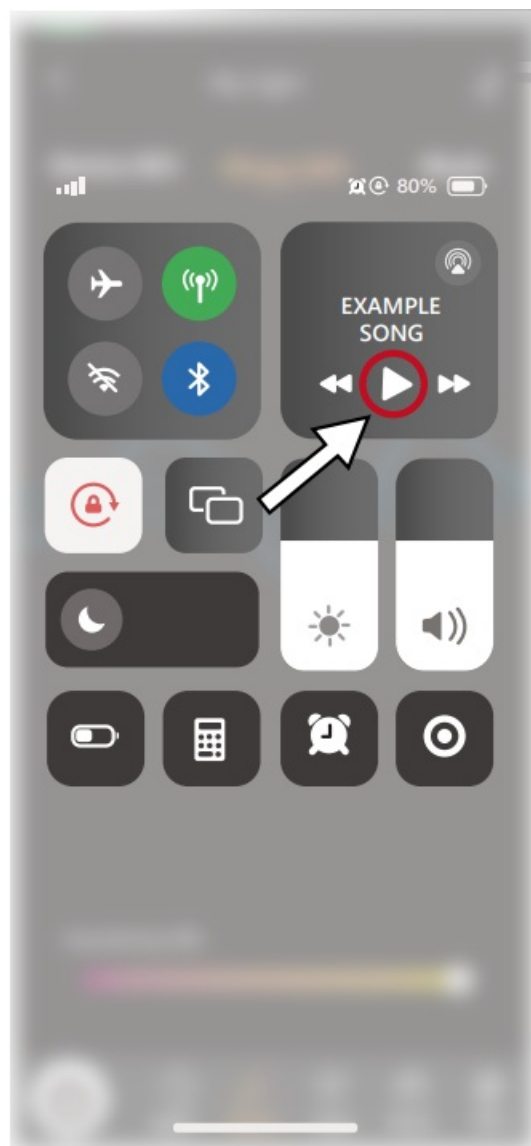


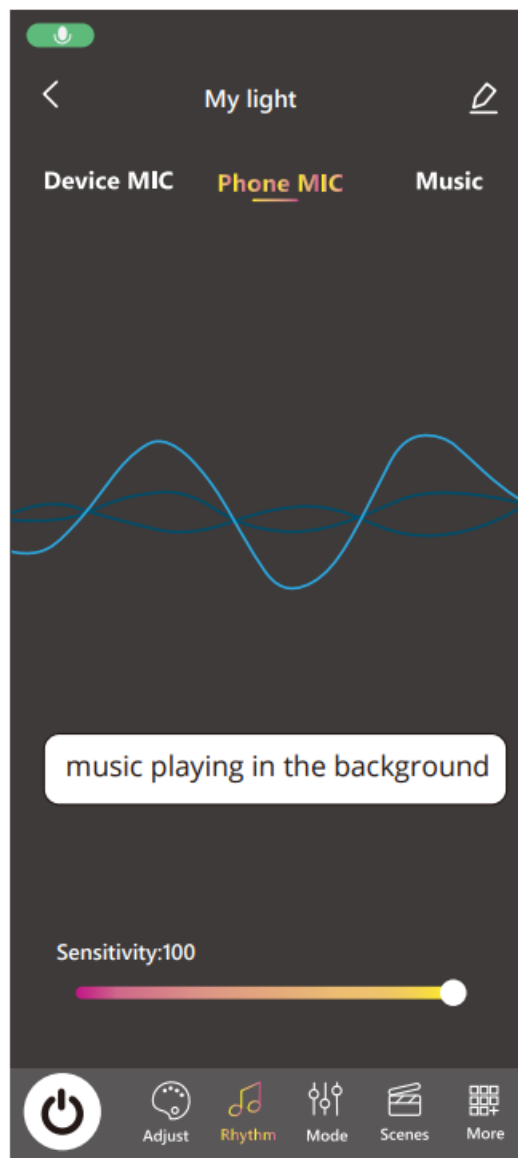
IMPORTANT

- The Phone MIC supports Android Auto only.
- When using the Phone MIC, users must enable the background permissions.
- Not all the cellphones support the split screen function.
- Music supports only a device or a gate up at once.

IOS SYSTEM BACKGROUND PLAYING

The Phone MIC in the APP allows music to play in the background while users are using other Apps.

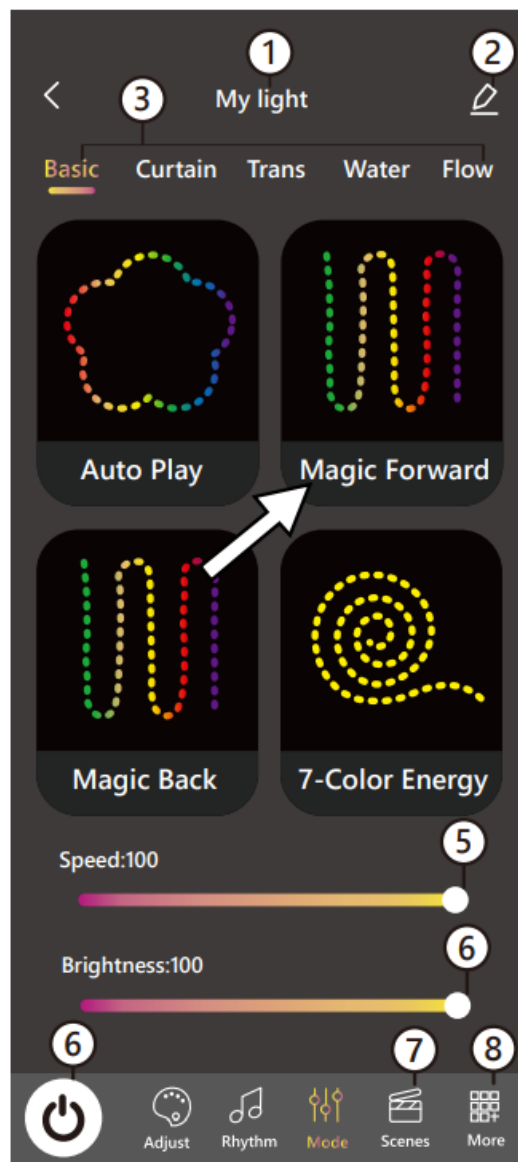




IMPORTANT

- The Phone MIC does not support Apple CarPlay.
- When using the Phone MIC, users must enable the background permissions.

LIGHT MODE





1. Device name
2. Device setting
3. Light mode catalog
4. Light mode with animation (touch one to set)
5. Speed adjust
6. On/Off
7. Scene mode
8. More information

SCENES MODE

1. Device name
2. Device setting
3. 4 scene modes (touch to set the light mode not supposed to add one)
4. On/Off
5. More information

MORE INFORMATION



FAQ (KNOWLEDGE BASE)

Access our Knowledge Base for comprehensive guides and instructional videos to support your installation requirements effectively.

OPT7 CUSTOMER SUPPORT

OPT7 offers comprehensive customer support, including assistance with your questions, technical issues, and app functionality.

WARRANTY REGISTRATION

Learn how to file a warranty claim and register your product for warranty.

SOCIAL MEDIA

Stay updated with OPT7 on social media for new tips, tricks, giveaways, and the latest information for auto enthusiasts.

INSTALLATION GUIDES

Explore our install guides for a seamless experience.


VIDEO TUTORIAL

Subscribe to the OPT7 YouTube Channel for installation tutorials, product highlights, and more.

USER TERMS

Learn about our privacy policy and find out what information do you collect when placing an order.

Documents / Resources

 The image shows the cover of the 'OPT7 GLOW App' user guide. It features the 'OPT7 GLOW' logo at the top, a blue sports car in the center, and a smartphone at the bottom displaying the app interface. The text 'OPT7 GLOW APPLICATION USER GUIDE' is visible at the top.	<p>OPT7 GLOW OPT7 GLOW App [pdf] User Guide OPT7, GLOW, OPT7 GLOW App, App</p>
--	--

References

- [User Manual](#)

Manuals+, Privacy Policy

This website is an independent publication and is neither affiliated with nor endorsed by any of the trademark owners. The "Bluetooth®" word mark and logos are registered trademarks owned by Bluetooth SIG, Inc. The "Wi-Fi®" word mark and logos are registered trademarks owned by the Wi-Fi Alliance. Any use of these marks on this website does not imply any affiliation with or endorsement.