




# OPPLE 10W-830 LED Linear Java Instruction Manual

[Home](#) » [OPPLE](#) » **OPPLE 10W-830 LED Linear Java Instruction Manual** 

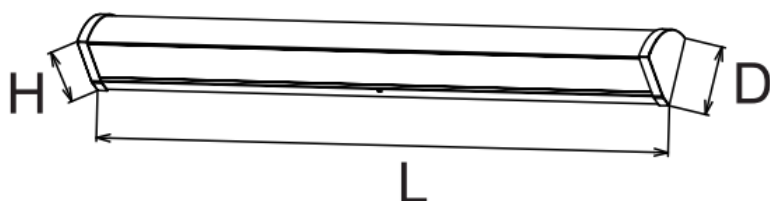
## OPPLE 10W-830 LED Linear Java Instruction Manual




### LED LINEAR LIGHT

<div>Item Code</div>	<div>CCT</div>	<div></div>
521028003000	3000K/4000K	0.7Kg

Model Name	L (mm)	D (mm)	H (mm)	Rated Voltage (V-)	Frequen cy (Hz)	Current (A)	Pow er Fa ctor	Rated Power(W)
LED Linear-Java L580-10W	580	72	66	220-240	50/60	0.3	0.9	10



Product Code	Product Description	N	Light source code	QR Code	Energy Label
521028003000	LED Linear-Java L580-10W-830/840-WH	1	LS118001032		C

This product contains a light source of energy efficiency class (C).

#### Contents

- [1 Safety Instructions](#)
- [2 Installation Procedure](#)
- [3 WARNING](#)
- [4 Waterproof Installation Tips\(If applicable\)](#)
- [5 Wall mount installation](#)
- [6 Documents / Resources](#)
  - [6.1 References](#)
- [7 Related Posts](#)

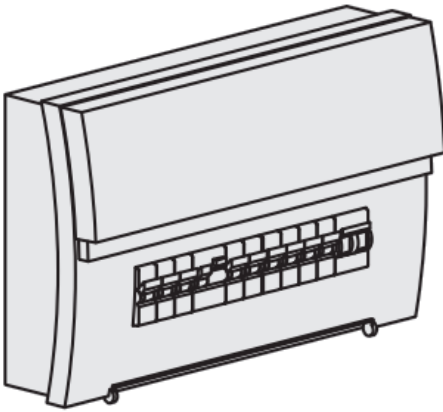
## Safety Instructions

*To ensure correct function and safety, please read and follow all instructions carefully before using the product:*

1. Turn off power supply before installation or before doing any maintenance work.
2. Do not install any luminaire near the heat source. nominal supply voltage or amperage ratings.
3. Do not exceed the
4. All wiring and installation of the light fitting must adhere to local and national wiring rules.
5. Take care not to pull any electrical wires during unpacking as this may damage the connection.
6. Lay out all the components on a smooth surface and make sure there are no components missing before assembling.
7. To avoid injury or damage to the fitting, please ensure that power leads and screws are secure before connecting the power.
8. Please keep instructions for future reference.
9. Please refer to IP(Ingress Protection) rating of this luminaire when deciding the location. of installation.
10. If luminaire is exposed to high corrosive environment(coastal region), it will require a higher durability of powder coat, consult manufacturer before installation.

## Installation Procedure

### WARNING

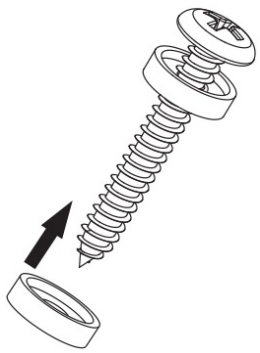
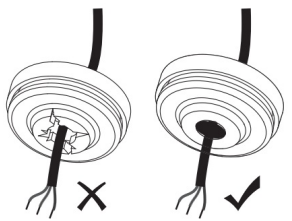
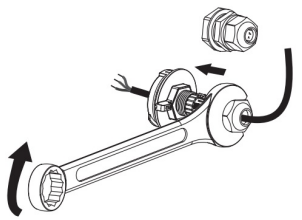
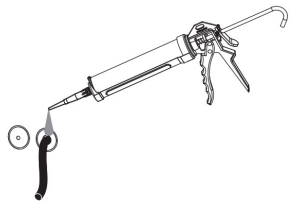


Turn Off Power Supply

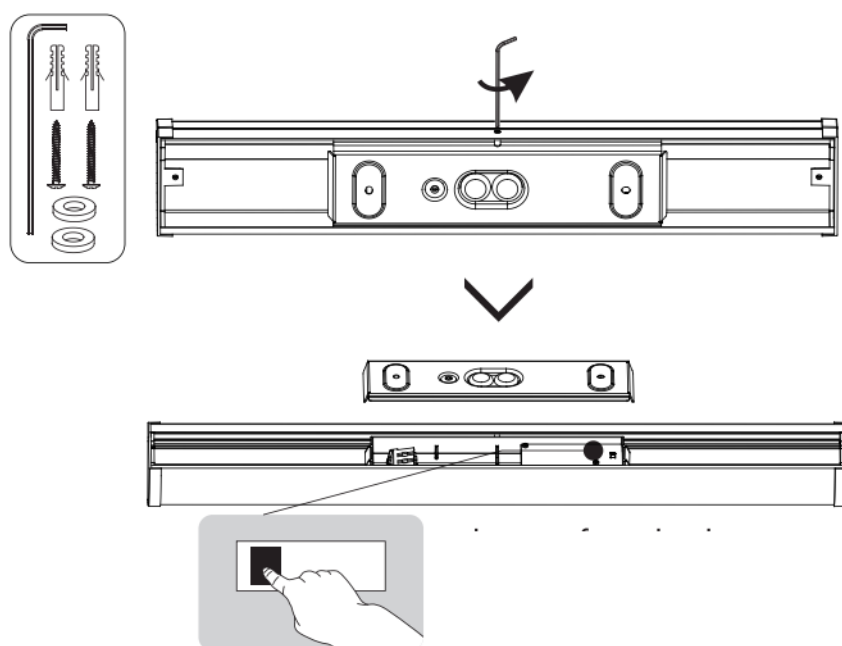


1. Switch off before installation.
2. Switch on only after complete installation and examination of the circuit.
3. Professional electrician for installation and maintenance only.

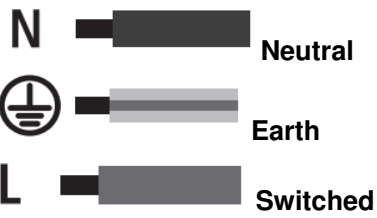
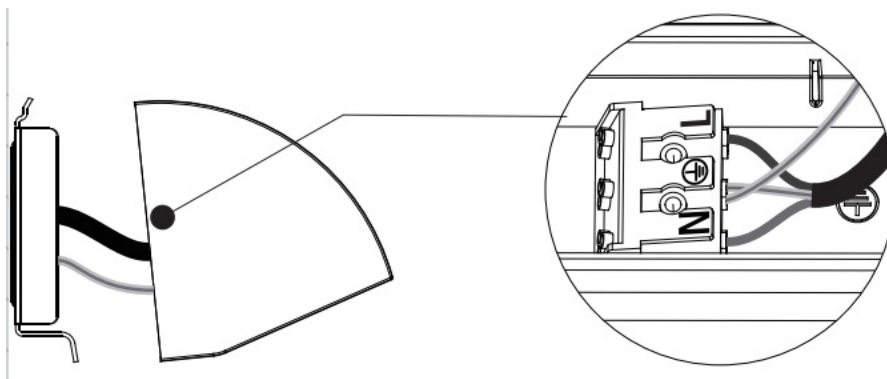
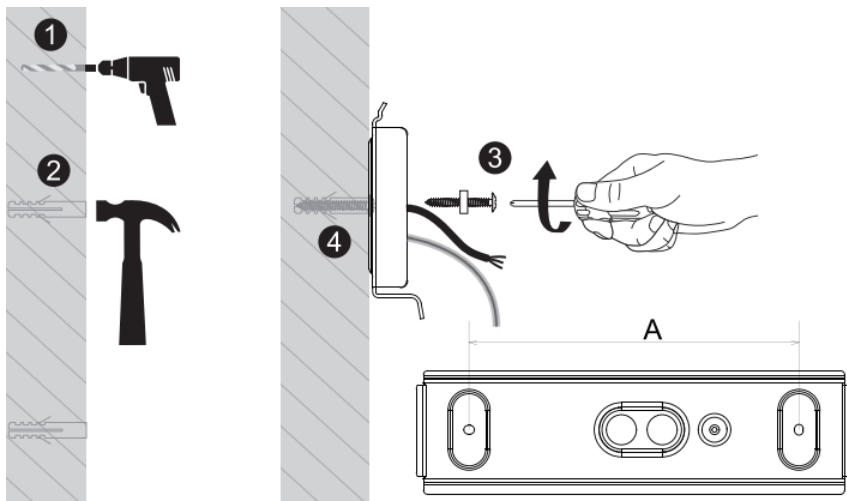
### Waterproof Installation Tips(If applicable)

Waterproof gasket for screwing		Fasten the waterproof gasket into the mounting screws to prevent water from leaking inside.
Waterproof grommet for cable entry		If there is gap between cable and waterproof grommet, please fill it with water-resistant silicone caulk to prevent water from leaking inside.
Waterproof cable Gland for mains entry		Ensure that the waterproof cable gland is tightened to prevent water from leaking inside.
Water-resistant silicone caulk in knock out hole		Caulks in knock out holes are tight enough to avoid dust, insects, and especially water from leaking inside.

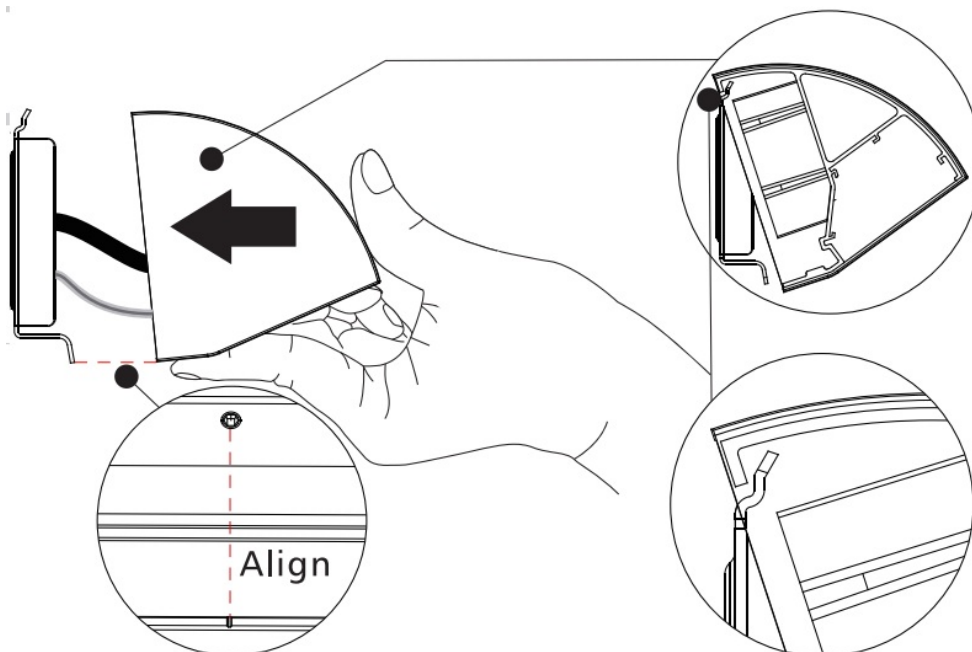
## Wall mount installation

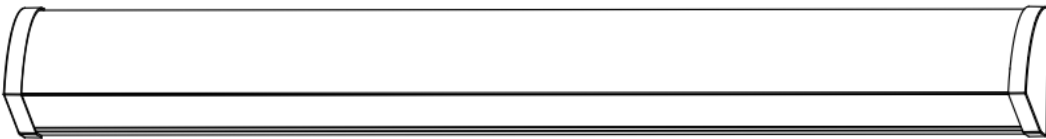
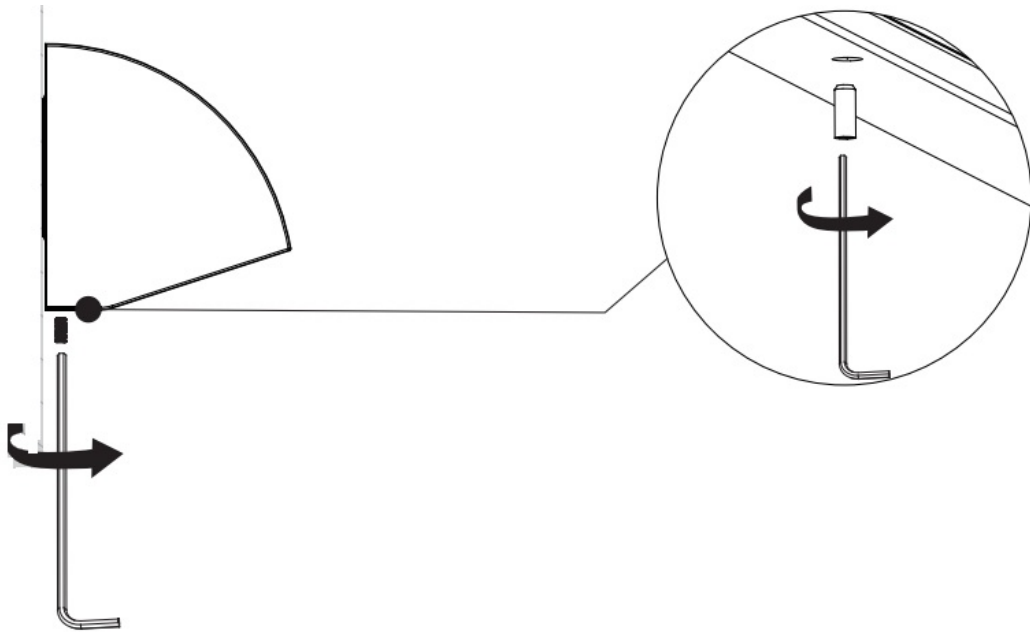


select preferred colour temperature for product in CCT change function only.



**Wire diameter:** 0.5-2.5mm  
**Wire stripping length:** 8-10mm





# OPPLE

## Documents / Resources

	<p><a href="#">OPPLE 10W-830 LED Linear Java</a> [pdf] Instruction Manual</p> <p>10W-830, 10W-840, 10W-830 LED Linear Java, 10W-830, LED Linear Java, Linear Java, Java</p>
--	---

## References

- [User Manual](#)

[Manuals+.](#) [Privacy Policy](#)

This website is an independent publication and is neither affiliated with nor endorsed by any of the trademark owners. The "Bluetooth®" word mark and logos are registered trademarks owned by Bluetooth SIG, Inc. The "Wi-Fi®" word mark and logos are registered trademarks owned by the Wi-Fi Alliance. Any use of these marks on this website does not imply any affiliation with or endorsement.