



opentext Content Management Integration Instructions

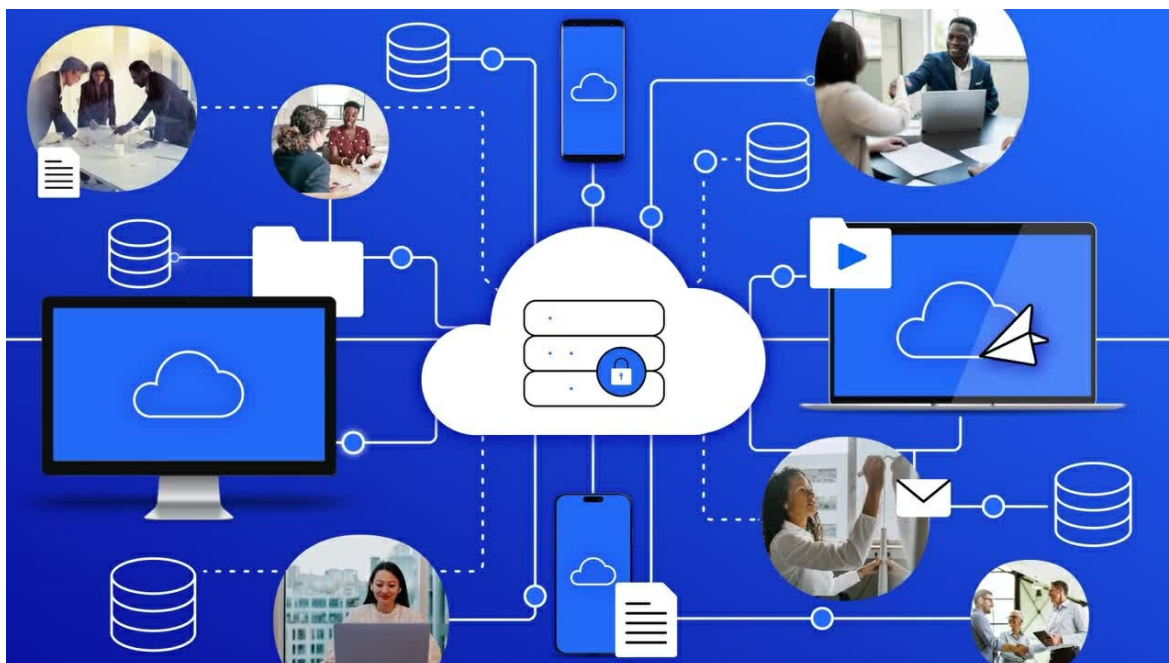
[Home](#) » [opentext](#) » opentext Content Management Integration Instructions 

Contents

- 1 [opentext Content Management Integration](#)
- 2 [Product Information](#)
- 3 [Product Usage Instructions](#)
- 4 [Benefits](#)
- 5 [Go live faster with new functionality](#)
- 6 [Manage the compliance of sharing documents](#)
- 7 [Bring your project team up to speed](#)
- 8 [End-user adoption](#)
- 9 [Key security features](#)
- 10 [Buy with confidence from the product vendor of OpenText Core Share](#)
- 11 [Beyond the FasTrak](#)
- 12 [Documents / Resources](#)
 - 12.1 [References](#)



opentext Content Management Integration



Product Information

Service Overview

OpenText Content Management Integration with OpenText Core Share FasTrak enables organizations to securely share digital documents with external business partners by connecting OpenText Content Management to OpenText Core Share.

Benefits

- Secure and controlled sharing of business documents
- Support for digital collaboration
- Proven methodology for rapid implementation
- Enhanced visibility on document usage
- Compliance framework for document sharing
- Training and support for end-user adoption

Specifications

- **Integration:** OpenText Content Management with OpenText Core Share
- **Support:** OpenText Professional Services
- **Features:** Secure sharing, compliance management, user training

Product Usage Instructions

1. Secure Digital Collaboration and Mobility

The integration ensures secure sharing of information from OpenText Content Management with external parties. Users can track document views and actions taken by external users, enhancing visibility and control over shared content.

2. Manage Compliance with Sharing Documents

Establish a compliance framework by configuring sharable folders, users, and groups. Implement approval

workflows for new shares and monitor existing shares. Generate reports for insights into shared content.

3. **Bring Your Project Team Up to Speed**

Ensure your project team understands the security and control features available. Collaborate with OpenText consultants to enable the team on new functionalities and maximize the benefits of workshops.

4. **End User Adoption**

Simplify adoption within your organization by providing eLearning support for business users. Educate users on new features at their convenience to encourage utilization of the platform.

FAQ

- **Q: How can I track document usage with OpenText Core Share?**

A: OpenText Core Share allows you to see when external users view documents and their actions, providing better visibility over information usage.

- **Q: What support is available for compliance management?**

A: The OpenText project team assists in establishing a compliance framework, configuring sharing settings, and monitoring shared content to ensure regulatory requirements are met.

OpenText Content Management Integration with OpenText Core Share FasTrak

Enable your organization to share digital documents with external business partners by connecting your OpenText Content Management to OpenText Core Share.

Benefits

- **Go live faster:** Start with the proven introductory approach
- **Compliance:** Manage shared content
- **Control:** Establish approval policy for sharing content
- Maximize adoption of the sharing feature

Sharing business documents in a secure and controlled way is more important than ever. Additionally, the increasing number of people working from home requires tools that support digital collaboration. OpenText™ Content Management is ready to support different sharing scenarios. It easily connects with OpenText Core Share.

With the OpenText Content Management Integration with OpenText™ Core Share FasTrak, our experts in OpenText Professional Services have built a best practice procedure to enable your organization to share business documents in a secure way, establishing a framework to control and manage the shared content.

Go live faster with new functionality

The OpenText Content Management Integration with OpenText Core Share FasTrak follows a proven methodology to help customers go live rapidly. OpenText consultants will not only connect your platform to the OpenText Core Share SaaS application but also review your existing OpenText Content Management architecture to ensure everything is in place to support your end users with all the new functionality.

Secure digital collaboration and mobility

Waikato Regional Council worked with OpenText Professional Services to embed secure digital capabilities into their platform and provide this to their end users and business partners. “The ability to share information directly from OpenText Content Management with the contractors has been really valuable. They are all looking at the same document without the back-and-forth of email or giving full access to our systems. With OpenText Core

Share you can see when external people viewed documents and what they have done. It gives you much better visibility on who is using your information and how.”

Joanne Bell

Information Management

Team Leader,

Waikato Regional Council Community and Services

Manage the compliance of sharing documents

Keep control. The OpenText project team will help you to establish a compliance framework for sharing documents. This begins with configuring sharable folder types, users, and groups. The introduction of an approval workflow for new shares enhances your control over what will be shared with whom. While the system automatically monitors the existing shares for duration, additional reports can give your administrators insight into the currently open shares.

Bring your project team up to speed

Despite the new functionality is very easy to use for business users, it is important to understand the security and control features that are available. Before the project starts, we work with your project team and enable them on the new functionality. This ensures that they get the most out of the functional workshops with the OpenText consulting team.

End-user adoption

Adopting new functionalities and processes can be a challenge inside larger organizations. The OpenText Content Management Integration with OpenText Core Share FasTrak supports business users with an eLearning approach so they can educate themselves on the new features when they need it when it is most convenient for them.

Key security features

- **Permissions**

Control your OpenText Content Management users who have access to sharing features

- **Control**

Control the folders and content that are shareable using whitelisting and RM Security Clearances

- **Security**

No inbound connection from OpenText Core Share back into OpenText Content Management is required

- **Protect**

External users only need access to OpenText Core Share and never access OpenText Content Management directly

Buy with confidence from the product vendor of OpenText Core Share

Benefit from OpenText’s experience, expertise, and innovative problem-solving implementing OpenText Content Management solutions. As the product vendor, OpenText delivers as one team. Professional Services has unparalleled access to OpenText’s Customer Support and Product Engineering teams who share mutual accountability to customer success and satisfaction relating to products, product extensions, and services. Professional Services is a global organization with over 3,000 people bringing nearly three decades of experience with content solutions.

Beyond the FasTrak

[OpenText Core Share](#) integrates with [OpenText™ Core Signature](#).

Related services

- [User Adoption and Change Management advisory services](#)
- [Training \(instructor-led via remote in-person, or self-paced\)](#)
- [Managed Services: fully managed or assistive services](#)


To talk to an OpenText Professional Services expert about this solution or other service offerings, please get in touch with ProfServices@opentext.com or visit www.opentext.com/services.

Resources

- OT Blog about secure sharing and collaboration
[Read the blog ›](#)
- Go live faster and extend functionality with packages
[Learn more ›](#)
- Maximizing solution adoption
[Learn more ›](#)
- Operate to delight with Managed Services
[Learn more ›](#)

Copyright © 2024 Open Text • 10.24 | 242-000046-001.

Documents / Resources

	opentext Content Management Integration [pdf] Instructions Content Management Integration, Management Integration, Integration
---	---

References

- [User Manual](#)

[Manuals+](#), [Privacy Policy](#)

This website is an independent publication and is neither affiliated with nor endorsed by any of the trademark owners. The "Bluetooth®" word mark and logos are registered trademarks owned by Bluetooth SIG, Inc. The "Wi-Fi®" word mark and logos are registered trademarks owned by the Wi-Fi Alliance. Any use of these marks on this website does not imply any affiliation with or endorsement.