



Opengear OM1200 Device Server with Gigabi User Guide

[Home](#) » [Opengear](#) » Opengear OM1200 Device Server with Gigabi User Guide 

Contents

- [1 Opengear OM1200 Device Server with Gigabi](#)
- [2 BEFORE YOU BEGIN](#)
- [3 LET'S GET STARTED](#)
- [4 Troubleshooting](#)
- [5 Documents / Resources](#)
 - [5.1 References](#)
- [6 Related Posts](#)



Opengear OM1200 Device Server with Gigabi



BEFORE YOU BEGIN

Check that you have the appropriate parts in the box

OM1200

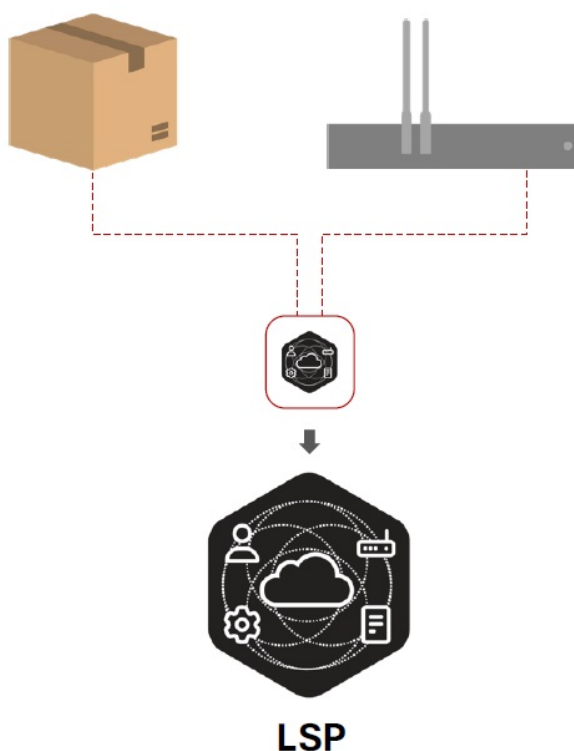
- Appliance
- 12V DC Power Supply
- Rack Mount Screw Kit
- Rack Ears for OM1200
- RJ45 to DB9F Crossover Serial Adapter
- CAT5e RJ45 UTP Straight Cable
- 4G LTE-A Pro Antennas

OM2200

- Appliance
- IEC Power Cables
- Rack Mount Screw Kit
- Rack Ears for OM2200
- RJ45 to DB9F Crossover Serial Adapter
- CAT5e RJ45 UTP Straight Cable
- 4G LTE-A Pro Antennas

Refer to user manuals for part numbers and quantities included.

Check the appliance is labelled as LSP enabled




Register an account / log in to Lighthouse Service Portal

Visit portal.opengear.com.


If not already registered, click the user icon and select Register to initiate the process. Log in to the portal with your credentials.

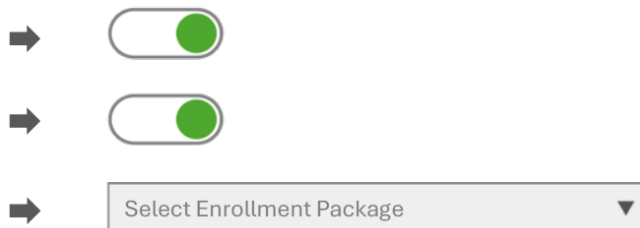
Configure the enrollment packages

1. Navigate to the Lighthouse Service Portal.
2. Navigate to the  Dashboard.
3. Select Manage Packages.
4. The Enrollment Settings are displayed.
5. Select New Enrollment Package.
6. Setup and configure the Enrollment Packages.

Refer to the Lighthouse Service Portal online documentation for more information regarding the configuration of enrollment packages.

Configure appliance enrollment options

1. To enable true zero touch provisioning, navigate to the Lighthouse Service Portal.
2. Navigate to the  Dashboard.
3. Select Manage Packages.
4. Set Automatic Enrollment Triggering to Active.



5. Set Default Enrollment Package to Active.
Select Default Enrollment Package.

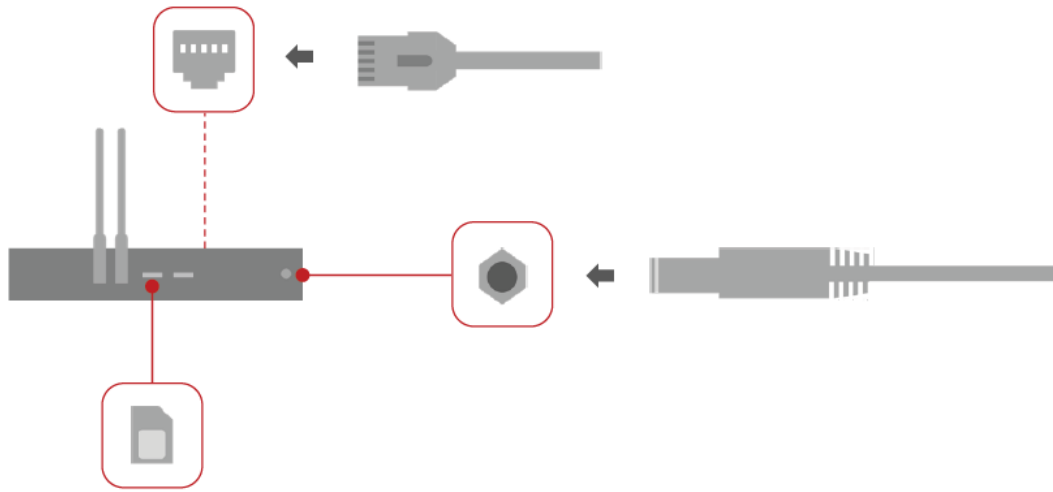
Note that by default these settings are set to inactive.

LET'S GET STARTED

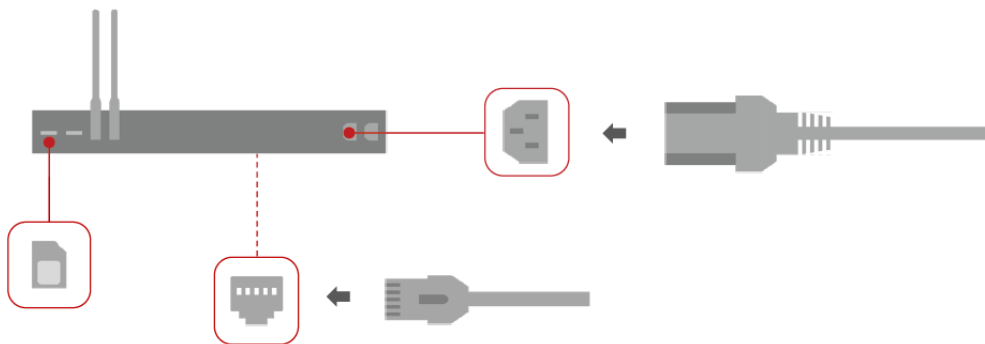
Step 1:

Connect the network, insert sim card(s) and power the Opengear appliance.

OM1200



OM2200



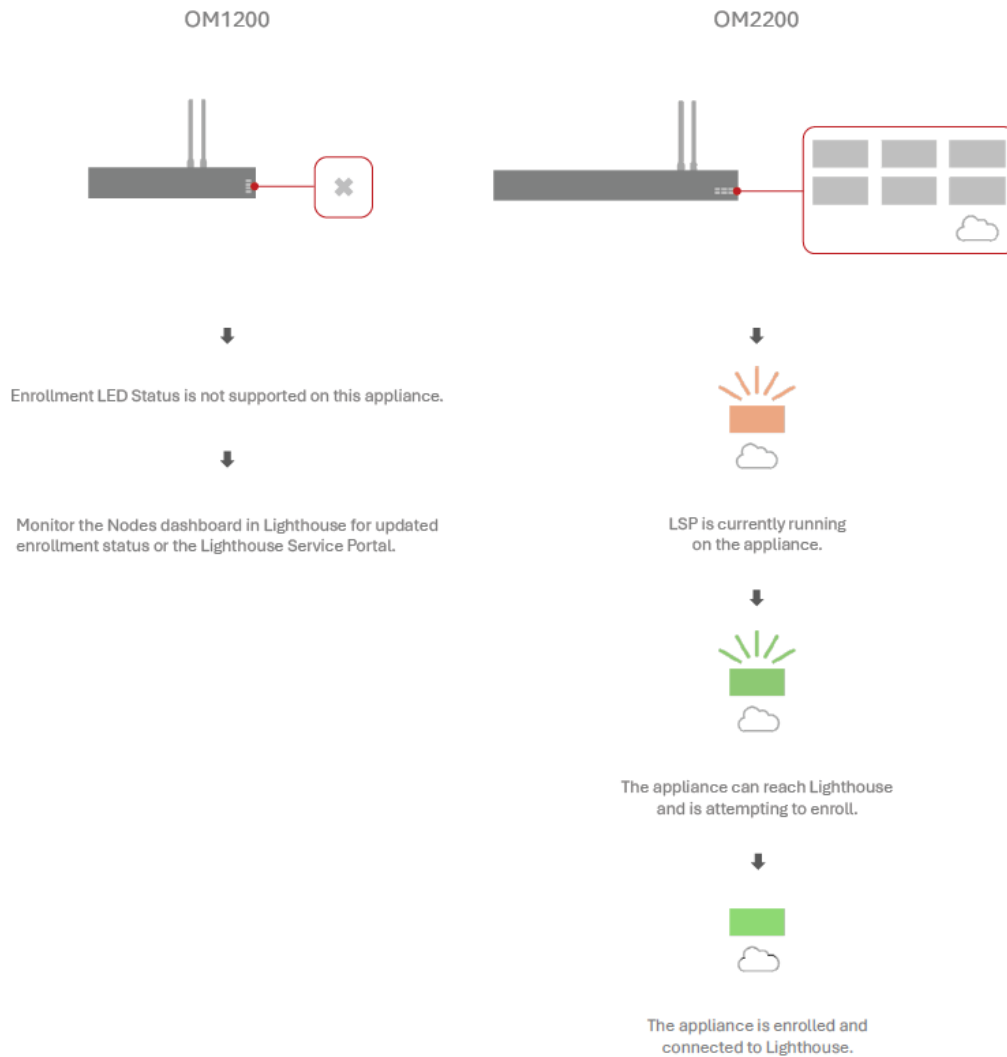
Cellular is Enabled in LSP-enabled devices. The sim must be able to connect via the default APN 'Broadband' in the event the appliance is unable to connect via the network interface. Digi sim cards support the default APN out of the box.

Step 2:

The appliance initiates the enrollment and provisioning.

Step 3:

Monitor the enrollment and provisioning progress.



Step 4:

The appliance is enrolled and provisioned with the updated status shown. Check the status on either the Lighthouse Instance or Lighthouse Service Portal.

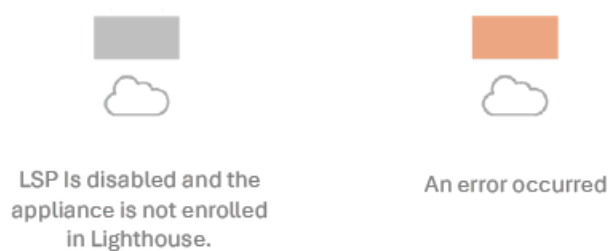


Further Information

Troubleshooting

OM2200

Additional LED status may be shown during the provisioning and enrollment process.




Support

For online support information such as help desk, user manuals and knowledge base articles, visit portal.opengear.com

Documents / Resources

 <small>OPERATIONS MANAGER ZERO TOUCH PROVISIONING Quick Start Guide</small>	<p>Opengear OM1200 Device Server with Gigabi [pdf] User Guide OM1200, OM2200, OM1200 Device Server with Gigabi, OM1200, Device Server with Gigabi, S erver with Gigabi, with Gigabi, Gigabi</p>
--	---

References

-  [Opengear Customer Portal](#)
- [User Manual](#)

Manuals+. [Privacy Policy](#)

This website is an independent publication and is neither affiliated with nor endorsed by any of the trademark owners. The "Bluetooth®" word mark and logos are registered trademarks owned by Bluetooth SIG, Inc. The "Wi-Fi®" word mark and logos are registered trademarks owned by the Wi-Fi Alliance. Any use of these marks on this website does not imply any affiliation with or endorsement.