



onsemi NCV78343 Series Pixel Controller Evaluation Board User Manual

[Home](#) » [onsemi](#) » onsemi NCV78343 Series Pixel Controller Evaluation Board User Manual 

Contents

- [1 onsemi NCV78343 Series Pixel Controller Evaluation Board](#)
- [2 Product Information](#)
- [3 Product Usage Instructions](#)
- [4 NCV78343EVBUM](#)
- [5 Evaluation Board Features](#)
- [6 GETTING STARTED](#)
- [7 Satellite Board NCV78343R1DAGEVB](#)
- [8 LED Board](#)
- [9 Software](#)
- [10 Troubleshooting](#)
- [11 USB Driver Installation](#)
- [12 FLOW CHART](#)
- [13 FCC](#)
- [14 Documents / Resources](#)
 - [14.1 References](#)



onsemi NCV78343 Series Pixel Controller Evaluation Board



Product Information

The NCV78343 Evaluation kit is an evaluation board that demonstrates the functionality of the NCV78343 pixel controller. The board supports up to two devices (with the possibility to chain up to 32 devices) and up to 24 individual pixels. The board has UART as a communication protocol available on both CAN and M-LVDS physical layers, which allows for simulating different system architectures directly on the board. There is an on-board slot for LED driver that can be optionally fitted with boost-buck converter NCV78763R1DAGEVB. Both devices are controlled by the dedicated ONMCU board which is connected to the PC via USB cable. The evaluation kit is supplied from either banana or power jack connectors. Two I/O communication connectors for CAN and M-LVDS physical layers can be utilized to connect several pixel controller devices in a chain.

Product Usage Instructions

- Supply voltage range must be from 8 to 40 V, and the board can be supplied through either banana or standard 5.5 x 2.5 mm DC connectors.
- To power LEDs, the optional boost-buck converter board NCV78763R1DAGEVB can be fitted in the slot position J.BCKx.y.
- The default system architecture uses a repeater-slave device at U1 position and a slave device at U2 position. Local M-LVDS bus, which requires two 100 W terminating resistors, is also used in this configuration. To ensure proper termination, please short both J_LVDS1 and J_LVDS2 connectors.
- Plug-in the USB cable to the ONMCU board and start the PC SW GUI application. The COM port should be loaded automatically. Otherwise, please click on the Refresh button and then on Connect. If the COM port is not available, please check installed drivers (see below).

NCV78343EVBUM

The NCV78343 Evaluation kit demonstrates functionality of the NCV78343 pixel controller. The board supports two devices (with possibility to chain up to 32 devices) and up to 24 individual pixels. UART as a communication protocol is available on both CAN and M-LVDS physical layers, which allows to simulate different system architectures directly on the board. On board slot for LED driver can be optionally fitted with boost-buck converter NCV78763R1DAGEVB.

Both devices are controlled by the dedicated ONMCU board which is connected to the PC via USB cable. The evaluation kit is supplied from either banana or power jack connectors. Two I/O communication connectors for

CAN and M–LVDS physical layers can be utilized to connect several pixel controller devices in a chain.

Evaluation Board Features

- Up to 24 LED Pixels
- Fully Controllable by the SW GUI via USB Cable
- Supports Two Interfaces: CAN and M–LVDS
- Supports Different System Architectures
- Possibility to Connect More Pixel Controllers in a Chain
- Wide Supply Voltage Range
- Test Points for Important Signal
- Single Side PCB Assembly
- Optional BOOST–BUCK Convertor to Supply LEDs

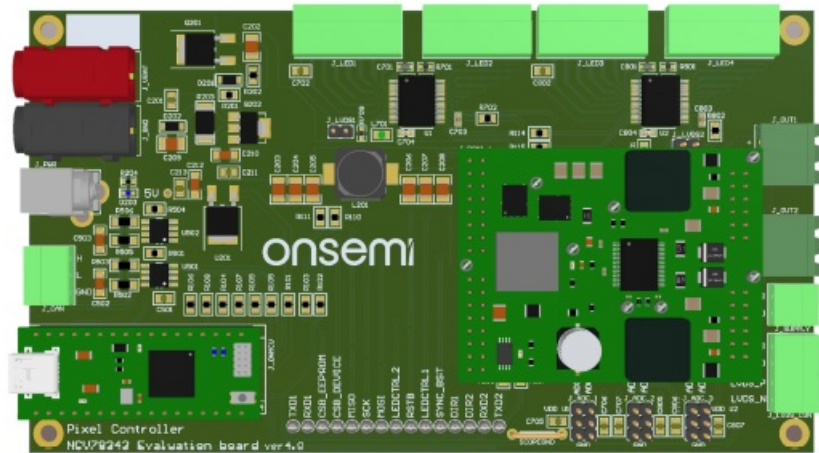


Figure 1. Board Layout

Table 1. NCV78343 ABSOLUTE MAXIMUM RATINGS

Characteristic	Symbol	Min	Max	Unit
Battery Supply Voltage	VBB	−0.3	60	V
Maximum LED Strings Current	Istring	0	1.4	A
Switch Differential Voltage (Note 1)	VSWxx_DIFF	−0.3	12	V
Junction Temperature	Tjunction	−45	170	°C

Stresses exceeding those listed in the Maximum Ratings table may damage the device. If any of these limits are exceeded, device functionality should not be assumed, damage may occur and reliability may be affected.
Absolute maximum rating for pins: SWx_(y+1) – SWxy for x={41} & y={20}

Table 2. RECOMMENDED BOARD OPERATING CONDITIONS

Characteristic	Symbol	Min	Typical	Max	Unit
Battery Supply Voltage	VBB	8	12	40	V
Maximum LED Strings Current	Istring	0	–	1.4	A
LED String Voltage	Vstring	0	–	60	V
Switch Differential Voltage	VSW_DIFF	0	–	10	V
Typical Board Current Consumption	Iboard	45	–	55	mA

Functional operation above the stresses listed in the Recommended Operating Ranges is not implied. Extended exposure to stresses beyond the Recommended Operating Ranges limits may affect device reliability.

Table 3. INTERFACE FUNCTION DESCRIPTION

Connector Name	Description / Function
J_VBAT / J_PWR	Input supply connectors, DC 12 V Typical
J_CAN	Input / Output CAN connector
J_OUT1 / J_OUT2	Output buck current connectors
J_SUPPLY	Output supply connector for supplying next drivers
J_LVDS_CON	Input / Output M-LVDS connector
J_ADX_xA	Input connectors with all ADC inputs
J_LVDS1 / J_LVDS2	Shorting jumpers for connecting 100 Q resistors at M-LVDS A and B pins
J_LED1 ... J_LED4	LED output connectors

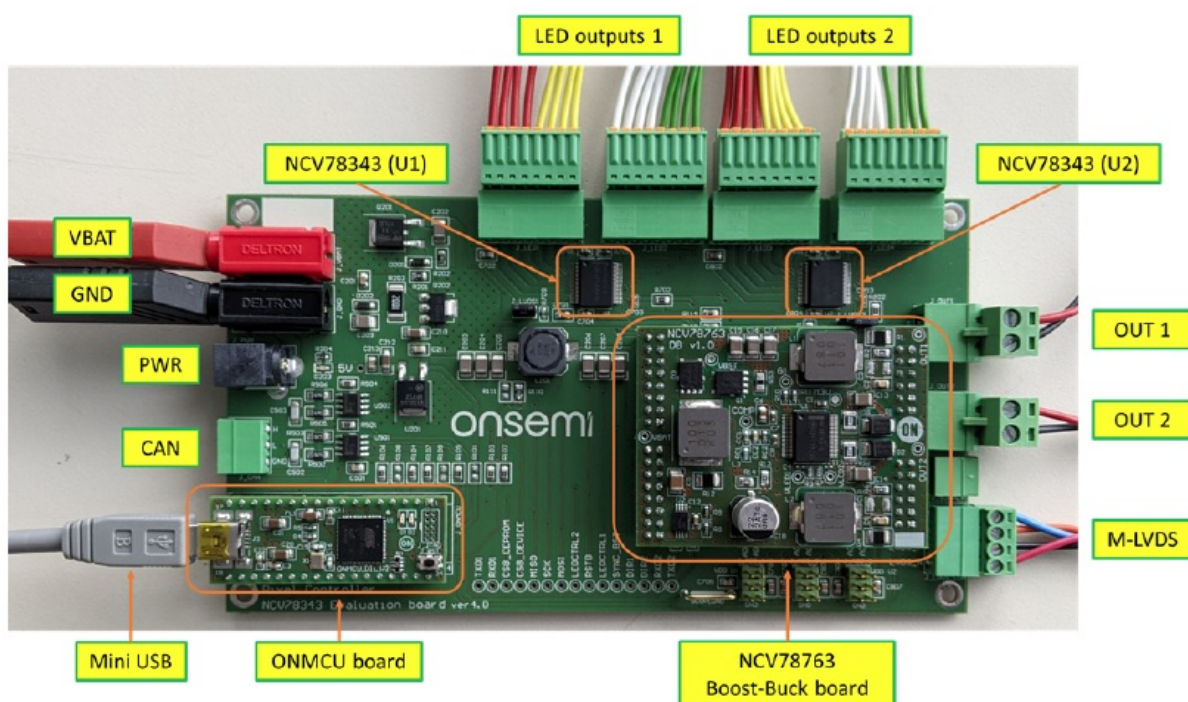


Figure 2. Picture of the NCV78343R1GEVB Mother Board

GETTING STARTED

The evaluation board is supplied through either banana or standard 5.5 x 2.5 mm DC connectors. Supply voltage range has to be from 8 to 40 V. LEDs can be optionally powered from boost-buck converter board NCV78763R1DAGEVB in the slot position J.BCKx.y. The default system architecture uses repeater-slave device at U1 position and slave device at U2 position. Local M-LVDS bus which requires two 100 terminating resistors is also used in this configuration. To ensure proper termination please short both J_LVDS1 and J_LVDS2 connectors.

Plug-in the USB cable to the ONMCU board and start the PC SW GUI application. The COM port should be loaded automatically, otherwise please click on Refresh button and then on Connect. If the COM port is not available, please check installed drivers (see below).

SYSTEM ARCHITECTURE

The evaluation kit supports different system architectures. The main differences are how the devices communicate with the MCU.

1. UART → CAN (default configuration) ONMCU UART → CAN → 1st NCV78343 → M-LVDS → 2nd NCV78343 → M-LVDS
2. MCU UART through M-LVDS ONMCU UART → 1st NCV78343 → M-LVDS → 2nd NCV78343 → M-LVDS
3. Only M-LVDS ONMCU UART → M-LVDS → 1st NCV78343 → M-LVDS → 2nd NCV78343 → M-LVDS
4. Only MCU UART ONMCU UART → 1st NCV78343 and 2nd NCV78343 (common UART)
5. CAN UART through M-LVDS External CAN → 1st NCV78343 → M-LVDS → 2nd NCV78343 → M-LVDS
6. Only CAN UART External CAN → 1st NCV78343 and 2nd NCV78343 (common UART)

It is possible to change the system architecture just by replacing 0 resistors following the configuration sheet in the schematic document. The default configuration uses UART communication over CAN physical layer. The CAN loop is made by two NCV7344 CAN transceivers. This simulates real application, where the CAN physical layer is used in the headlamp. In this configuration the first NCV78343 device U1 must be configured as a repeater-slave and the second device U2 has to be configured as a slave and also both J_LVDS pin headers must be shorted.

ADC Inputs

Each NCV78343 has three ADC inputs which share two functions. ADC0 and ADC1 share the functionality with I2C and ADC2 shares the functionality with input address resistor divider. All three ADC inputs are available at J_ADC_xA connectors. The first U1 device has by default external I2C EEPROM memory connected to pins SDA and SCL, while the second U2 device has all three ADC inputs connected to the resistor divider.

Addressing

NCV78343 devices are by default supplied without content in the customer OTP memory bank (not zapped). This allows full configuration flexibility. When using not zapped devices, it is possible to address them by resistor divider connected to ADC2/ADR pin or by the auto-addressing process (described below). Default addresses determined by voltage divider on ADC2/ADR pin are '4' for U1 and '7' for U2. Zapped devices have their address determined by the contents of OTP memory bank.

First LED control

Run the SW GUI and click on Connect button in the bottom menu. If the COM port is not recognized, click on the Refresh button or check installed drivers (see below). An application window will automatically pop up. Devices should be addressed using address from OTP memory, resistor divider or auto-addressing.

The read OPMODE command should return "direct" OPMODE for both devices with zapped OTP memory.

Enable “Autoupdate” checkbox and both BUCKx EN if the NCV78763 BOOST-BUCK module is available. Now, it is possible to independently move with each slider, and according to this the LED brightness should be changing.

Satellite Board NCV78343R1DAGEVB

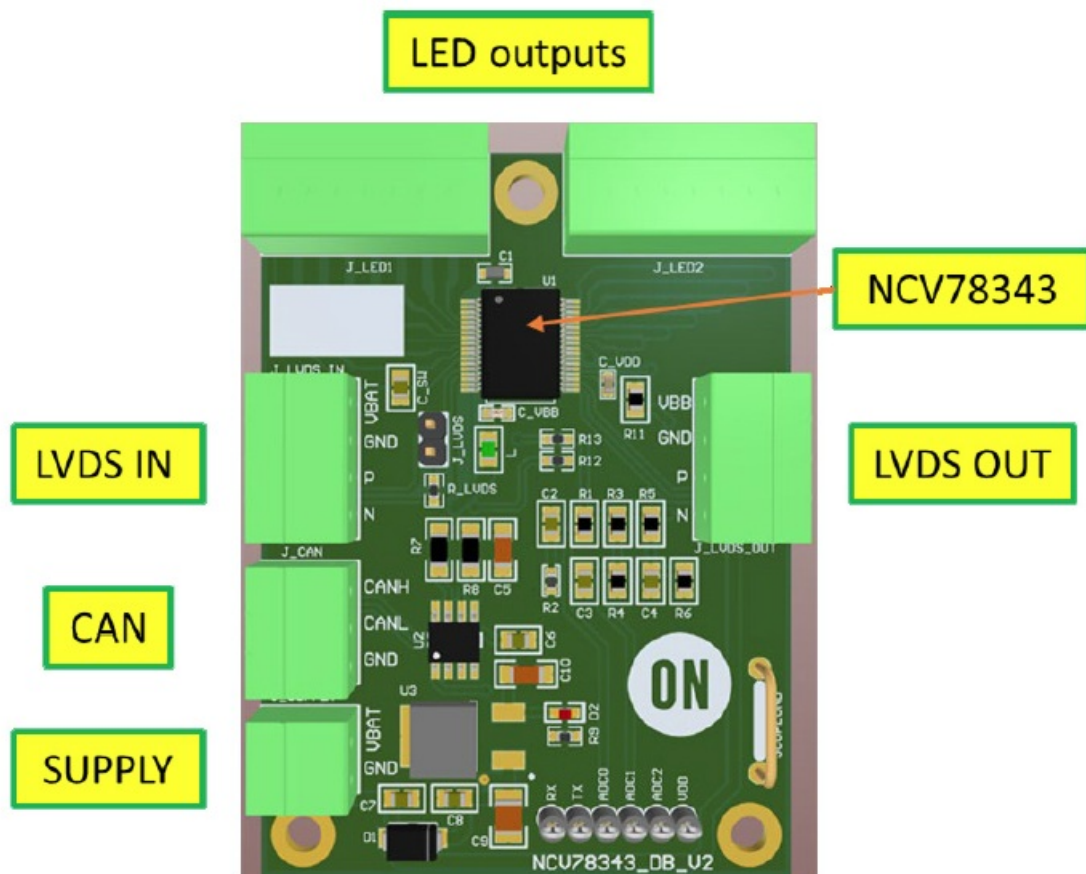


Figure 3. Satellite Board

The satellite (daughter) board extends the main Evaluation kit board. It allows to chain up to 32-pixel controller devices. Each satellite board contains one-pixel controller that can control 12 additional LED pixels. The connection between the Mother board and Satellite board can be established using either M-LVDS or CAN bus. Each board contains two M-LVDS connectors, which serve as an input and output, and one connector for CAN bus.

When using multiple boards, only the last one should have shorted J_LVDS jumper. Together with one shorted jumper on the Evaluation board, M-LVDS drivers are loaded by 50 impedance.

Table 4. INTERFACE FUNCTION DESCRIPTION

Connector Name	Description / Function
J_SUPPLY	Input supply connectors, DC 12 V Typical
J_CAN	Input / Output CAN connector
J_LVDS_IN	Input M-LVDS connector
J_LVDS_OUT	Output M-LVDS connector
J_LED1 / J_LED2	LED output connectors
J_LVDS	Shorting jumpers for connecting 100 Q resistors at M-LVDS A and B pins

LED Board

A LED board contains 24 LEDs with a possibility to connect them either in series or parallel connection.

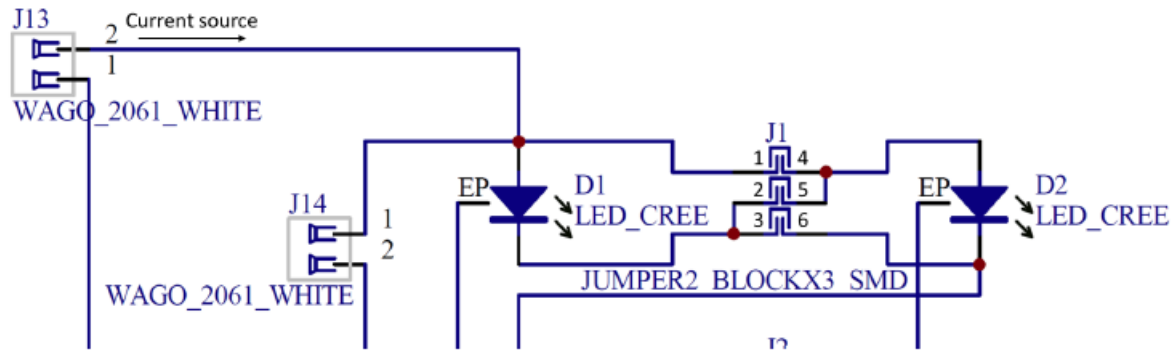


Figure 4. One LED Pair (Block) on LED Board

Each LED pair is connected to a separated WAGO connector through which is connected to a transistor in the pixel controller. Possible LED board configurations are described in Table 5. Header pin numbering refers to Figure 4.

Table 5. LED BOARD CONFIGURATIONS

Pins Shorted on Header JX			Function
1 & 4	2 & 5	3 & 6	
No	No	No	Open LED
No	No	Yes	Single LEDs with odd designator enabled (D1, D3, ...)
No	Yes	No	2 LEDs in series (D1 + D2)
Yes	No	No	Single LEDs with even designator enabled (D2, D4, ...)
Yes	No	Yes	2 LEDs in parallel (D1 D2)
Yes	Yes	Yes	Short LED

Auto-addressing

Auto-addressing process sets addresses for all not configured devices. The idea is in selectively enabling of buck outputs and measure the voltage drop across an LED string. When the LED string is connected to a device and the current source for this LED string is enabled, the voltage drop across the LED string will occur. The LED string voltage V_{LED} is measured by the device, thus the address may be assigned to a specific device. In general, the MCU sends a broadcast frame to enable auto-addressing to all devices and a second broadcast frame with the V_{LED} threshold and new device address parameters. After this, a device with V_{LED} higher than set threshold will assign a new address.

The following manual is valid for two devices, where the first behaves as a repeater-slave (address 1) connected to the MCU over CAN PHY and second device behaves as a slave (address 2) connected to the first device over the M-LVDS PHY layer. The LED string voltage is 33 V (127 ADC code).

1. Enable buck 1 output
2. Set address for device 1 (e.g. 1)
3. Go to the Configuration window and set bits "B", and "AAC" to 1 in the Auto-addressing control section and

click on Write. Then go to Assign Address section and set bits “B” to 1, “AA_THR” (threshold voltage value) to e.g. 80 and “AA_ADR” (address) to 1 and click on Write.

4. Read OPMODE from address 1– should be 2 (auto–addressing).
5. Set bits “B” and “AAC” to 0 in the Auto–addressing section and click on Write. Read OPMODE again – returned OPMODE should be 1 (OTP Config).
6. Set bit “NMD” to 1 and click on Write.
7. Set bit “PMC” to 1 and click on Write. Read “PMS” – should be 1. This step is valid only for the repeater–slave device.
8. Close the Configuration window, turn off buck 1, and enable buck 2.
9. Repeat steps 2, 3, 4, 5, 6 with a different address (e.g. 2).

Please note that this guide is valid for default configuration, where the first device is connected through the UART and others are connected through the M–LVDS. Set “1” means check the box in GUI.

Software

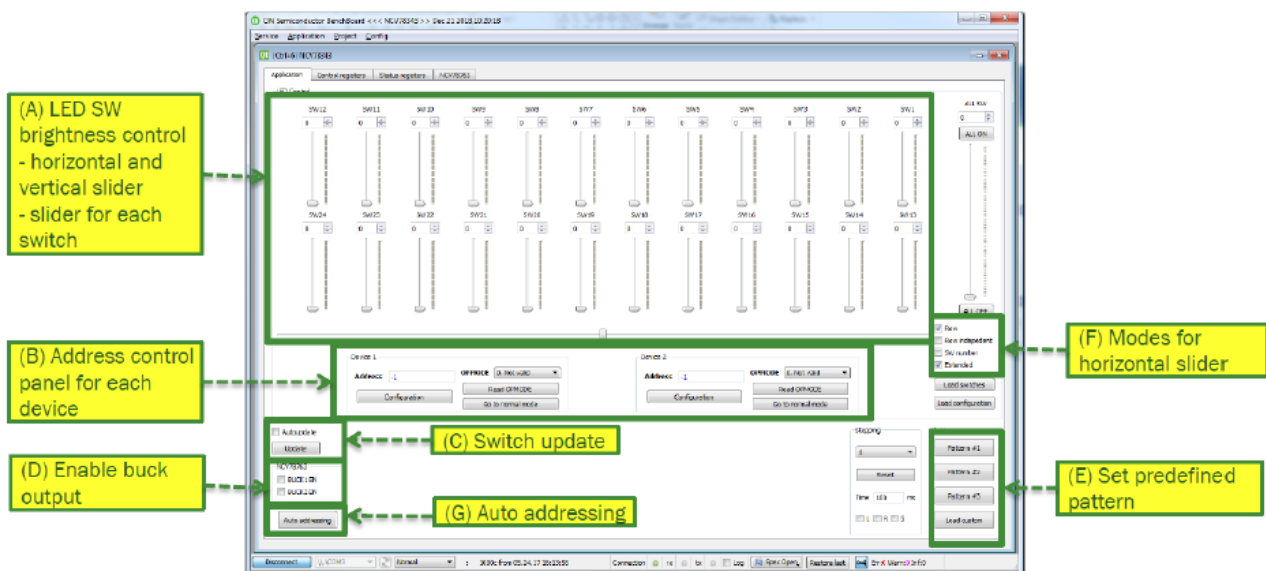


Figure 5. Main Application Tab

- **A.** Individual access to each LED. It is possible to change the LED brightness by moving the slider up/down or move the whole pattern by moving the horizontal or vertical slider.
- **B.** Address for each device and access to the configuration menu.
- **C.** It is necessary to send an update after each switch brightness change – calculate the ON, OFF and TR values and send MAPENA to devices. By enabling the Autoupdate checkbox, this is done automatically.
- **D.** Access to the first and second buck output of the NCV78763. The buck settings are available from the NCV78763 tab.
- **E.** Set one of the predefined patterns.
- **F.** Different modes for switch sliders.
 - Row – all switches will be merged into one row. It means that after last switch of the first row the parent will continue in first switch of the second row.
 - Row independent – each row will behave independently, so it is possible to set different pattern for each row.
 - SW – the pattern will be moved according to the SW numbers.

- Extended – this will add imaginary leading and trailing zeroes, so it is possible to move the whole pattern behind the visible range.
- **G.** Auto addressing process. Please set two addresses, thresholds, buck outputs (1 and 2 is reserved for on-board NCV78763; please use 3+ for a different current source) and click on Execute.

NCV78343EVBUM

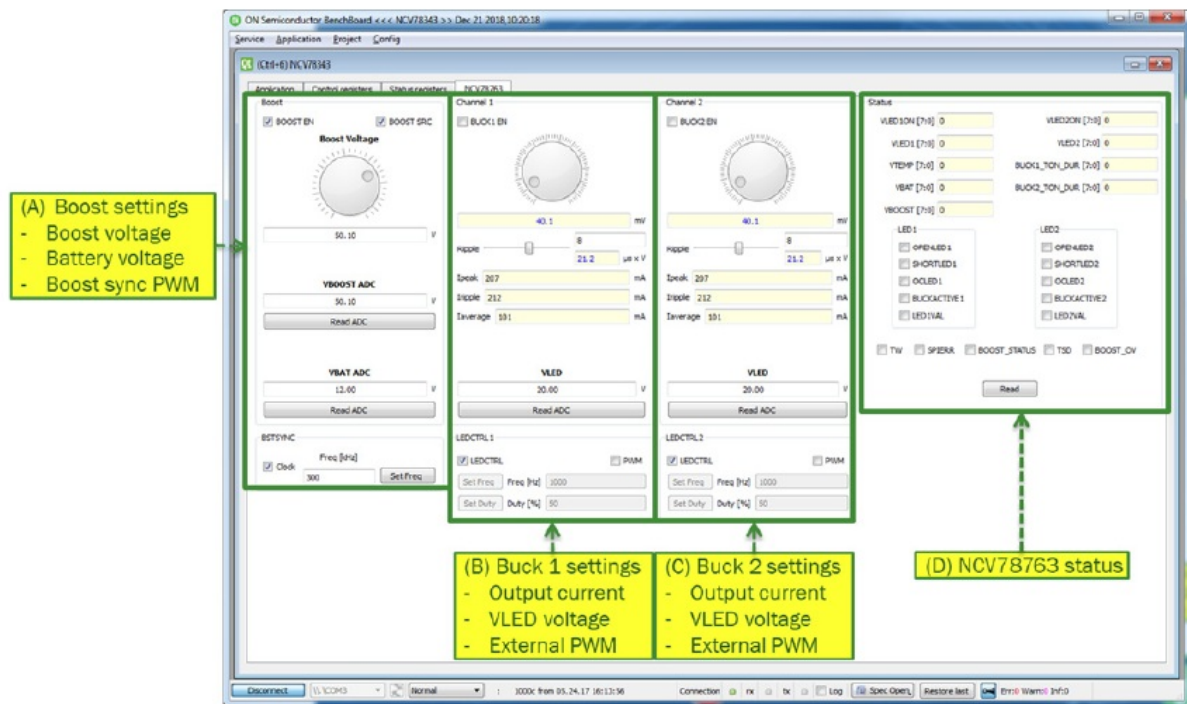


Figure 6. NCV78763 Tab

- **A.** Boost settings – set boost voltage and PWM frequency. Read battery and set boost voltages.
- **B.** Buck 1 settings – set buck current and enable pin. Set LEDCTRL pin or PWM. Read VLED voltage.
- **C.** Buck 2 settings – set buck current and enable pin. Set LEDCTRL pin or PWM. Read VLED voltage.
- **D.** NCV78763 status registers – access to all read status registers.

Troubleshooting

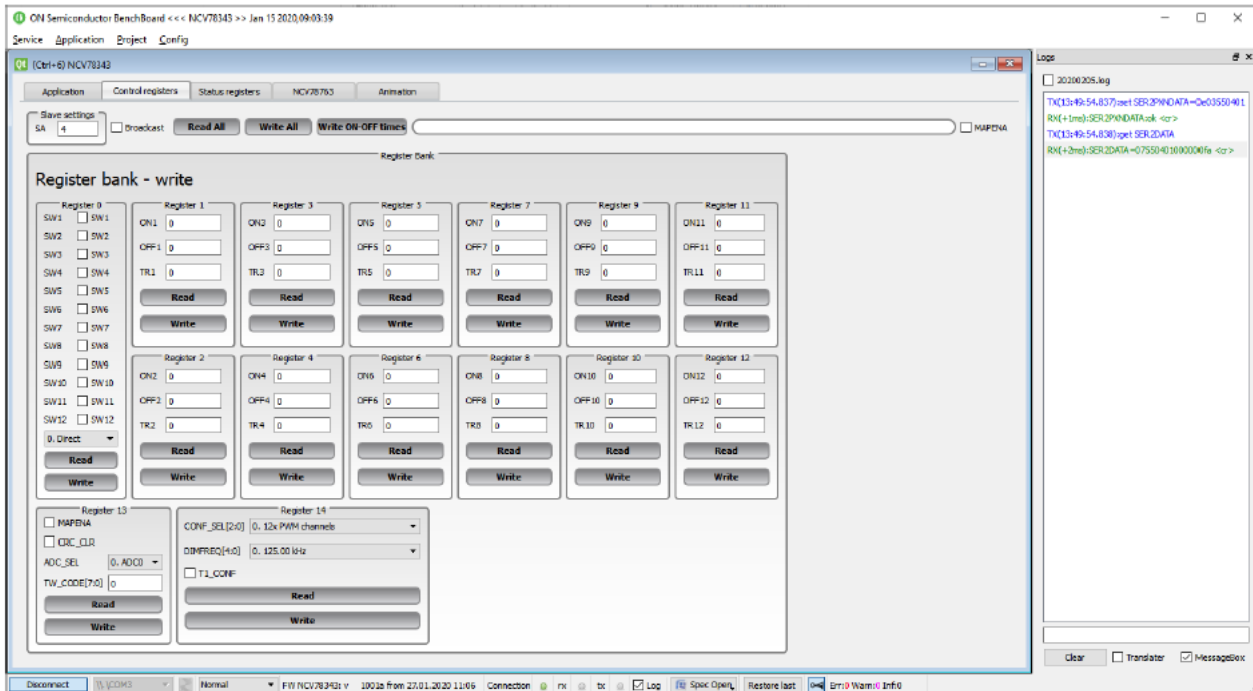


Figure 7. Logwindow

1. Enable log window (bottom menu)
2. Whenever any frame is sent, the response is shown in the log window.

Set part: AABBCCDDEEFF

- AA – the break pulse length
- BB – number of sent bytes
- CC – SYNC byte (0x55) DD – PID1
- EE – PID2
- FF – data (write 3–12 bytes)

Get part: AABBCCDDEEFF

- AA – number of read bytes
- BB – SYNC byte (0x55) CC – PID1
- DD – PID2
- EE – data (3–12 bytes)
- FF – CRC

NCV78343EVBUM

VBOOST ADC

50.14 V

Read ADC

VBAT ADC

12.09 V

Read ADC

Restart

Figure 8. BOOST Parameters

Check the VBAT and VBOOST voltages. The VBAT voltage should be voltage connected to the input connector minus voltage drop on the reverse polarity protection. The VBOOST voltage should be automatically set to 50 V after power on.

REG17

TEMP_RES [7:0] 85 43.1 °C Read

VDD_RES [7:0] 219 3.4 V

ADCX_RES [7:0] 255 1.205 V

REG18

VBB_RES [7:0] 88 12.1 V Read

VLED_RES [7:0] 113 29.3 V

TSD_CODE [7:0] 193 @ 170 °C

Figure 9. VDD Voltage

Read the VDD and VBB voltages and compare them with directly measured voltages on the board.

REG16

☐ TW ☐ TSD ☐ GSWERR ☐ DIMWARN ☐ DIMERR ☐ HWR ☐ CAP_UV ☐ OTP_ZAP_UV ☐ VBB_LOW

☐ GND_LOSS ☐ PWM_CNT_OVF ☐ MAPENA_STATUS ☐ OTP_CRC_FAIL_BANK_2 ☐ OTP_CRC_FAIL_BANK_0

☐ PXN_GLOBAL_COMM_ERR ☐ PXN_LOCAL_COMM_ERR ☐ PXN_FRAME_ERR ☐ PXN_SYNC_ERR

☐ TIMEOUT

PXN_CRC_ERR_CNT [3:0] 0 Read

Figure 10. Device Status Registers

- **TW/TSD** – there is a higher power dissipation in the device
- **GSWERR** – there is something wrong with at least one switch
- **DIMWARN/DIRERR** – there is wrong dimming pattern applied, adjust ON/OFF/TR values
- **CAP_UV** – there is something wrong with the external capacitor at C2P/C2N pins
- **PXN_GLOBAL_COMM_ERR** – there is some data mismatch at UART bus

- **PXN_LOCAL_COMM_ERR** – there is some data mismatch at the M-LVDS bus
- **PXN_SYNC_ERR** – wrong UART baudrate
- **PXN_FRAME_ERR** – a received PXN frame is corrupted (either parity or CRC or stop bit error) TIMEOUT – watchdog timeout occurred

USB Driver Installation

If the SW GUI does not recognize the connected board, please check the installed drivers.

- **A.** Open Device Manager (press Win+R and type devmgmt.msc).

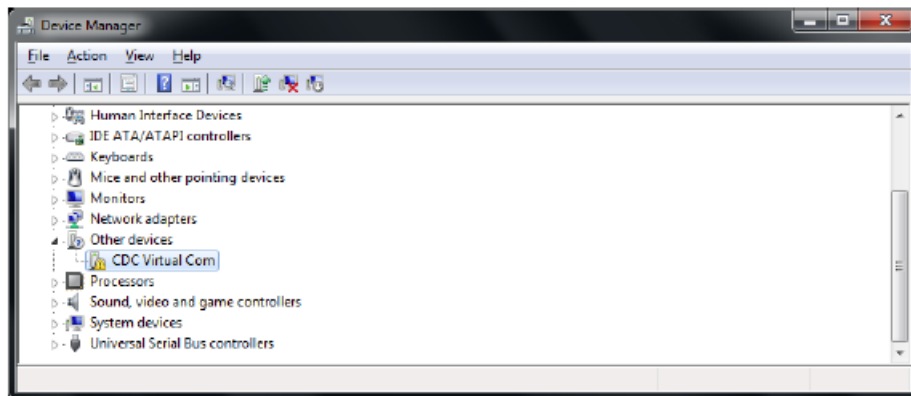


Figure 11. Device Manager

- **B.** If the CDC Virtual COM is not installed properly, right-click on CDC Virtual Com and select “Update Driver Software”.

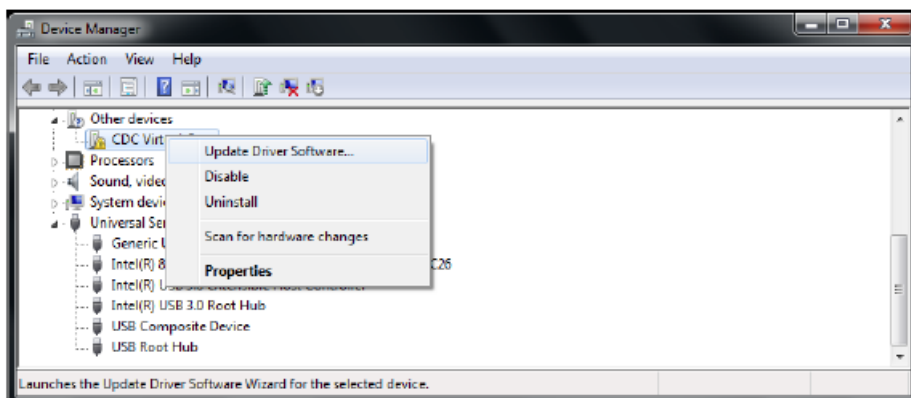


Figure 12. Update Driver Software

- **C.** Select “Browse my computer.” and then “Let me pick from a list...”

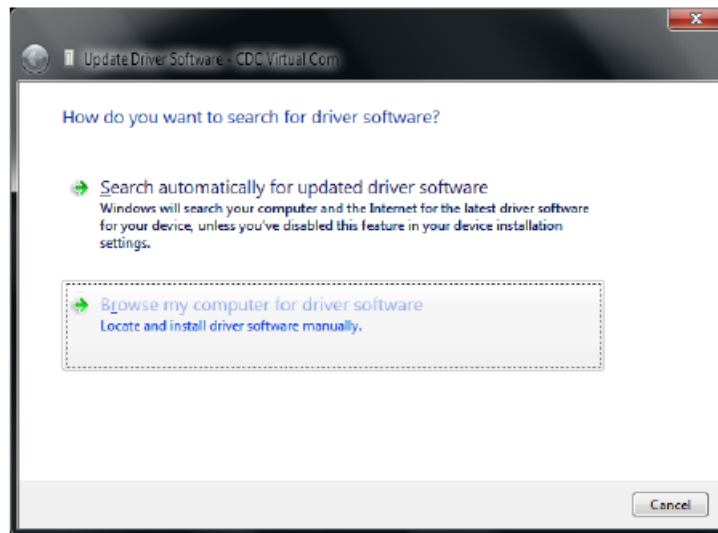


Figure 13. Browse My Computer

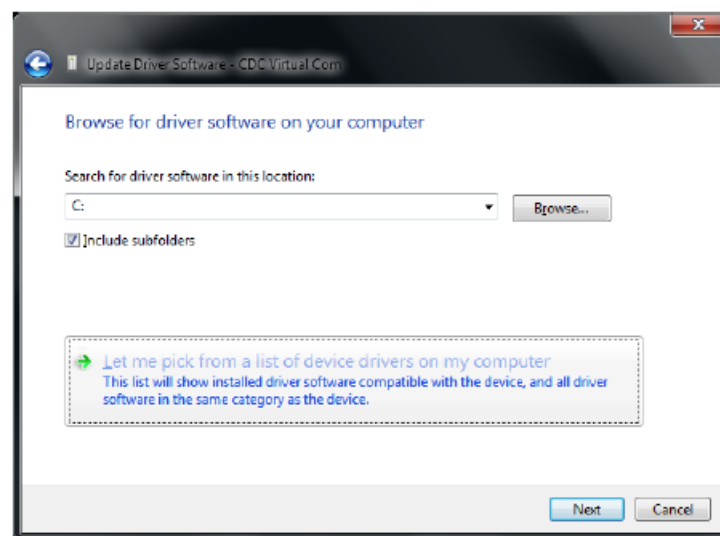


Figure 14. Let Me Pick from a List

- **D.** Click on “Next” and “Have Disk

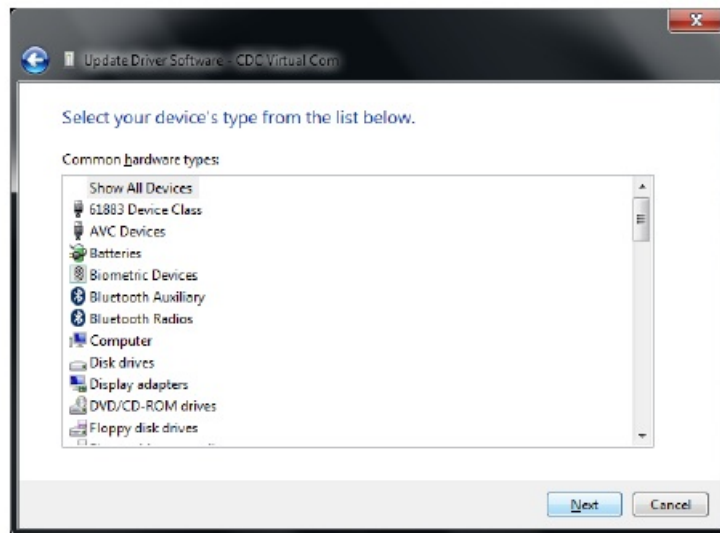


Figure 15. Select Your Device's Type

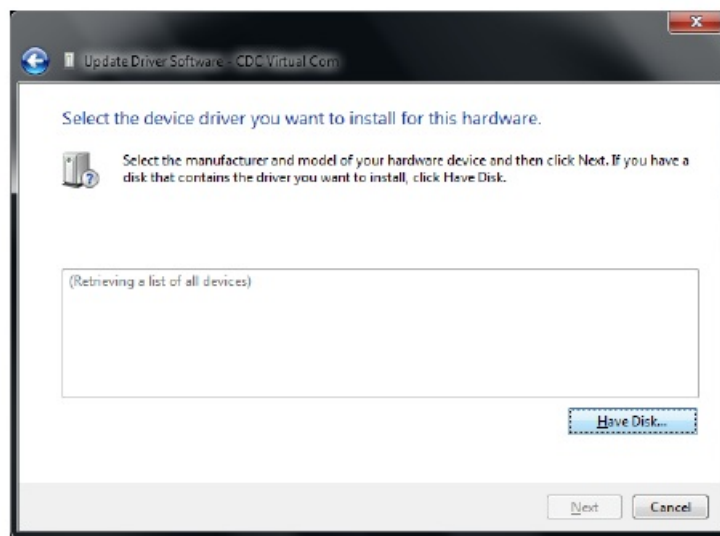


Figure 16. Select the Device Driver

- **E.** Click on “Browse” and select the path to the driver – the default location is the folder with installed PC SW GUI

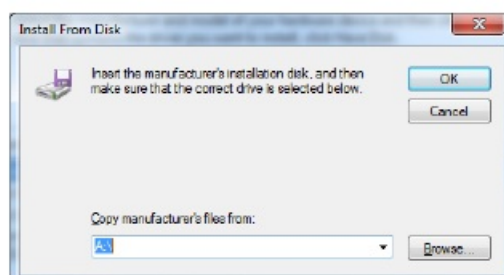


Figure 17. Install From Disk

- **F.** Click on “Ok”, “Next” and “Install”

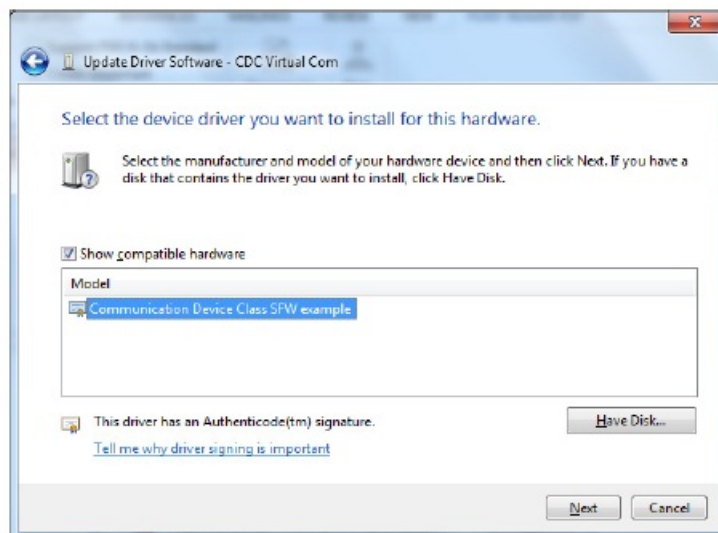


Figure 18. Update Driver Software

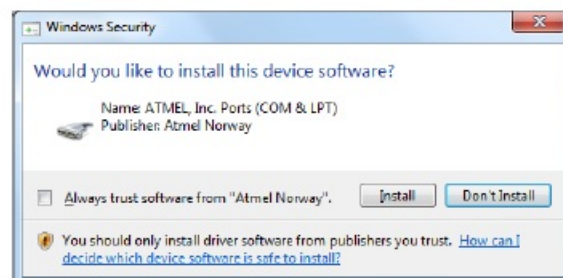


Figure 19. Windows Security Question

- **G.** Finish the USB Driver update by clicking on “Close”

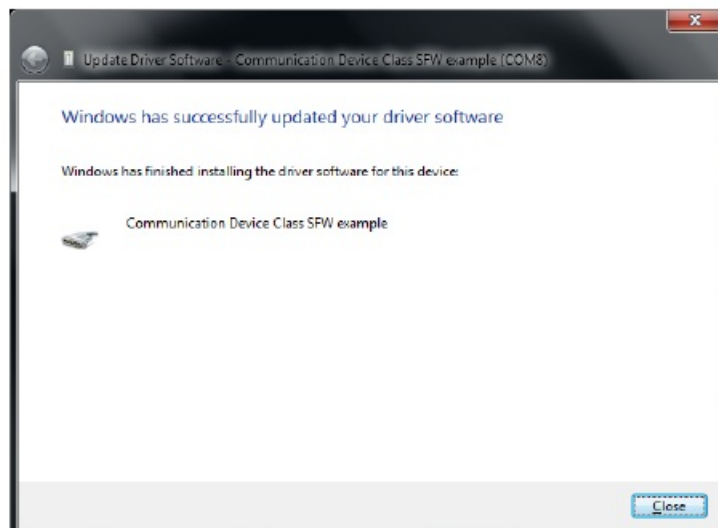


Figure 20. Successfully Updated Driver

- **H.** Verify COM port device “Communication Device Class SFW example”

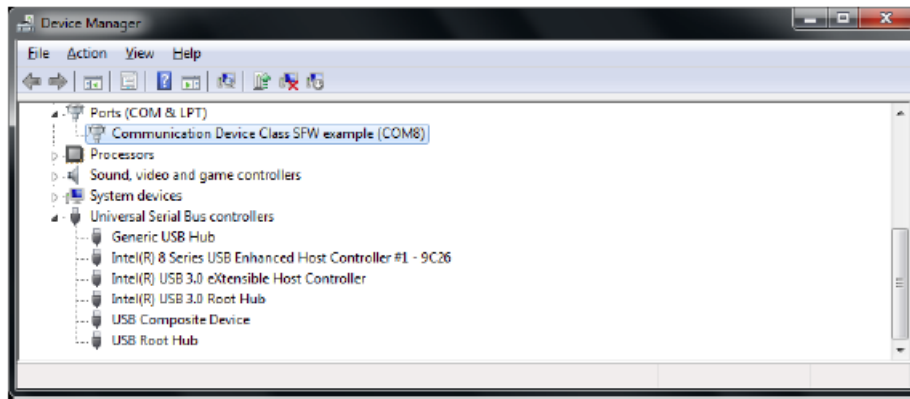


Figure 21. Verify Installed COM Port Driver

FLOW CHART

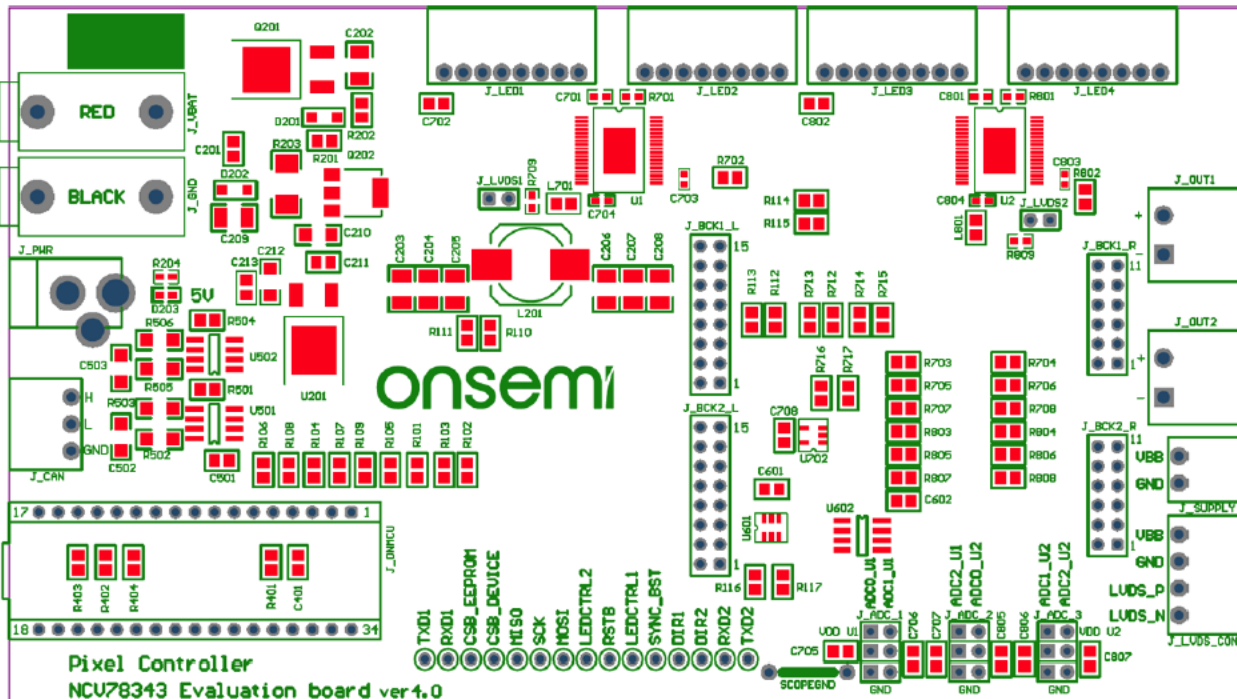


Figure 22. NCV78343R1GEVB Evaluation Board Assembly Drawing

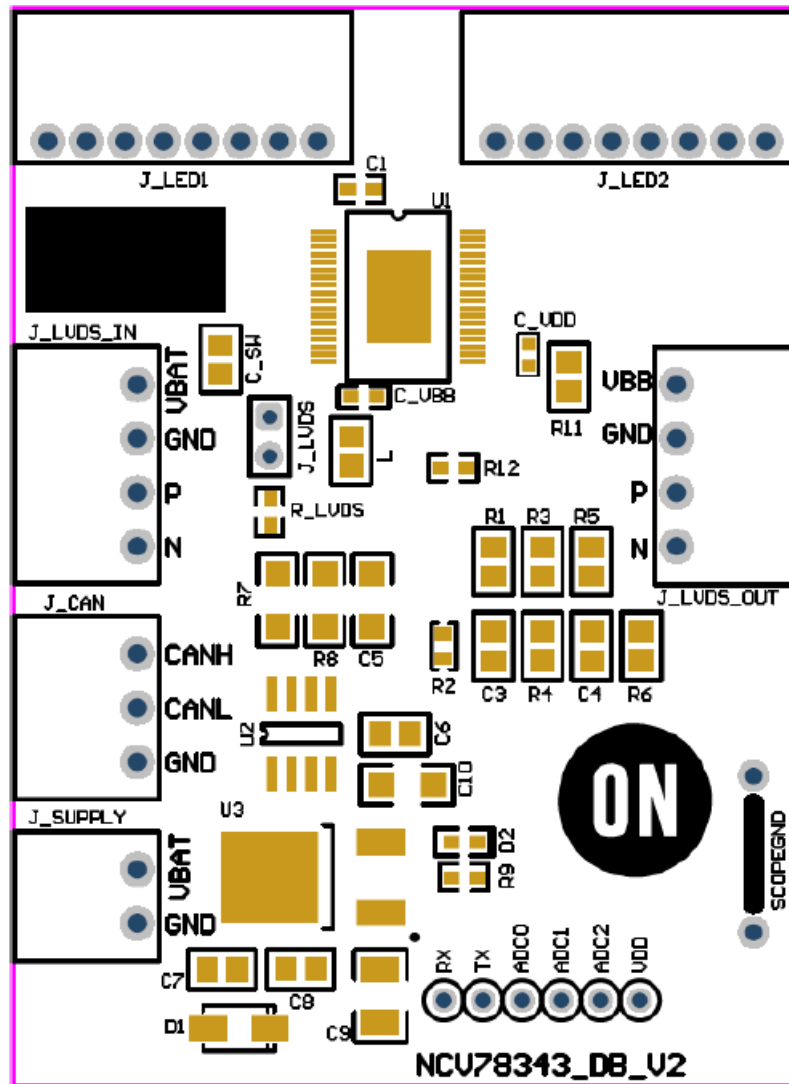


Figure 23. NCV78343R1DAGEVB Satellite Board Assembly Drawing

semi, , and other names, marks, and brands are registered and/or common law trademarks of Semiconductor Components Industries, LLC dba "onsemi" or its affiliates and/or subsidiaries in the United States and/or other countries. onsemi owns the rights to a number of patents, trademarks, copyrights, trade secrets, and other intellectual property. A listing of Onsemi's product/patent coverage may be accessed at www.onsemi.com/site/pdf/Patent-Marking.pdf. onsemi is an Equal Opportunity/Affirmative Action Employer. This literature is subject to all applicable copyright laws and is not for resale in any manner. The evaluation board/kit (research and development board/kit) (hereinafter the "board") is not a finished product and is not available for sale to consumers. The board is only intended for research, development, demonstration and evaluation purposes and will only be used in laboratory/development areas by persons with an engineering/technical training and familiar with the risks associated with handling electrical/mechanical components, systems and subsystems. This person assumes full responsibility/liability for proper and safe handling. Any other use, resale or redistribution for any other purpose is strictly prohibited.

THE BOARD IS PROVIDED BY ONSEMI TO YOU "AS IS" AND WITHOUT ANY REPRESENTATIONS OR WARRANTIES WHATSOEVER. WITHOUT LIMITING THE FOREGOING, ONSEMI (AND ITS LICENSORS/SUPPLIERS) HEREBY DISCLAIMS ANY AND ALL REPRESENTATIONS AND WARRANTIES IN RELATION TO THE BOARD, ANY MODIFICATIONS, OR THIS AGREEMENT, WHETHER EXPRESS, IMPLIED, STATUTORY OR OTHERWISE, INCLUDING WITHOUT LIMITATION ANY AND ALL REPRESENTATIONS AND WARRANTIES OF MERCHANTABILITY, FITNESS FOR A PARTICULAR PURPOSE, TITLE, NON-INFRINGEMENT, AND THOSE ARISING FROM A COURSE OF DEALING, TRADE USAGE, TRADE CUSTOM OR TRADE PRACTICE. onsemi reserves the right to make changes without further notice to any board. You are responsible for determining whether the board will be suitable for your intended use or application or will achieve your intended results. Prior to using or distributing any systems that have been evaluated, designed or tested using the board, you agree to test and validate your design to confirm the functionality for your application. Any technical, applications or design information or advice, quality characterization, reliability data or other services provided by onsemi shall not constitute any representation or warranty by onsemi, and no additional

obligations or liabilities shall arise from onsemi having provided such information or services. onsemi products including the boards are not designed, intended, or authorized for use in life support systems, or any FDA Class 3 medical devices or medical devices with a similar or equivalent classification in a foreign jurisdiction, or any devices intended for implantation in the human body. You agree to indemnify, defend and hold harmless onsemi, its directors, officers, employees, representatives, agents, subsidiaries, affiliates, distributors, and assigns, against any and all liabilities, losses, costs, damages, judgments, and expenses, arising out of any claim, demand, investigation, lawsuit, regulatory action or cause of action arising out of or associated with any unauthorized use, even if such claim alleges that onsemi was negligent regarding the design or manufacture of any products and/or the board.

This evaluation board/kit does not fall within the scope of the European Union directives regarding electromagnetic compatibility, restricted substances (RoHS), recycling (WEEE), FCC, CE or UL, and may not meet the technical requirements of these or other related directives.

FCC

This evaluation board/kit is intended for use for engineering development, demonstration, or evaluation purposes only and is not considered by onsemi to be a finished end product fit for general consumer use. It may generate, use, or radiate radio frequency energy and has not been tested for compliance with the limits of computing devices pursuant to part 15 of FCC rules, which are designed to provide reasonable protection against radio frequency interference. Operation of this equipment may cause interference with radio communications, in which case the user shall be responsible, at its expense, to take whatever measures may be required to correct this interference. onsemi does not convey any license under its patent rights nor the rights of others.

LIMITATIONS OF LIABILITY:

onsemi shall not be liable for any special, consequential, incidental, indirect or punitive damages, including, but not limited to the costs of prequalification, delay, loss of profits or goodwill, arising out of or in connection with the board, even if onsemi is advised of the possibility of such damages. In no event shall onsemi's aggregate liability from any obligation arising out of or in connection with the board, under any theory of liability, exceed the purchase price paid for the board, if any.

The board is provided to you subject to the license and other terms per onsemi's standard terms and conditions of sale. For more information and documentation, please visit www.onsemi.com.

PUBLICATION ORDERING INFORMATION TECHNICAL SUPPORT

North American Technical Support:

Voice Mail: 1 800-282-9855 Toll-Free USA/Canada

Phone: 011 421 33 790 2910

LITERATURE FULFILLMENT:

Email Requests to: orderlit@onsemi.com onsemi


Website: www.onsemi.com

Europe, Middle East and Africa Technical Support:



Phone: 00421 33 790 2910

For additional information, please contact your local Sales Representative

Documents / Resources

	<p>onsemi NCV78343 Series Pixel Controller Evaluation Board [pdf] User Manual EVBUM2856, NCV78343EVBUM, NCV78343 Series Pixel Controller Evaluation Board, NCV78343 Series, Pixel Controller Evaluation Board, Controller Evaluation Board, Evaluation Board, Board</p>
---	---

References

-  [Intelligent Power and Sensing Technologies | onsemi](#)
-  [Intelligent Power and Sensing Technologies | onsemi](#)

Manuals+.