

## onsemi FUSB15200 Dual Port USB TYPE-C-PD Controller Owner's Manual

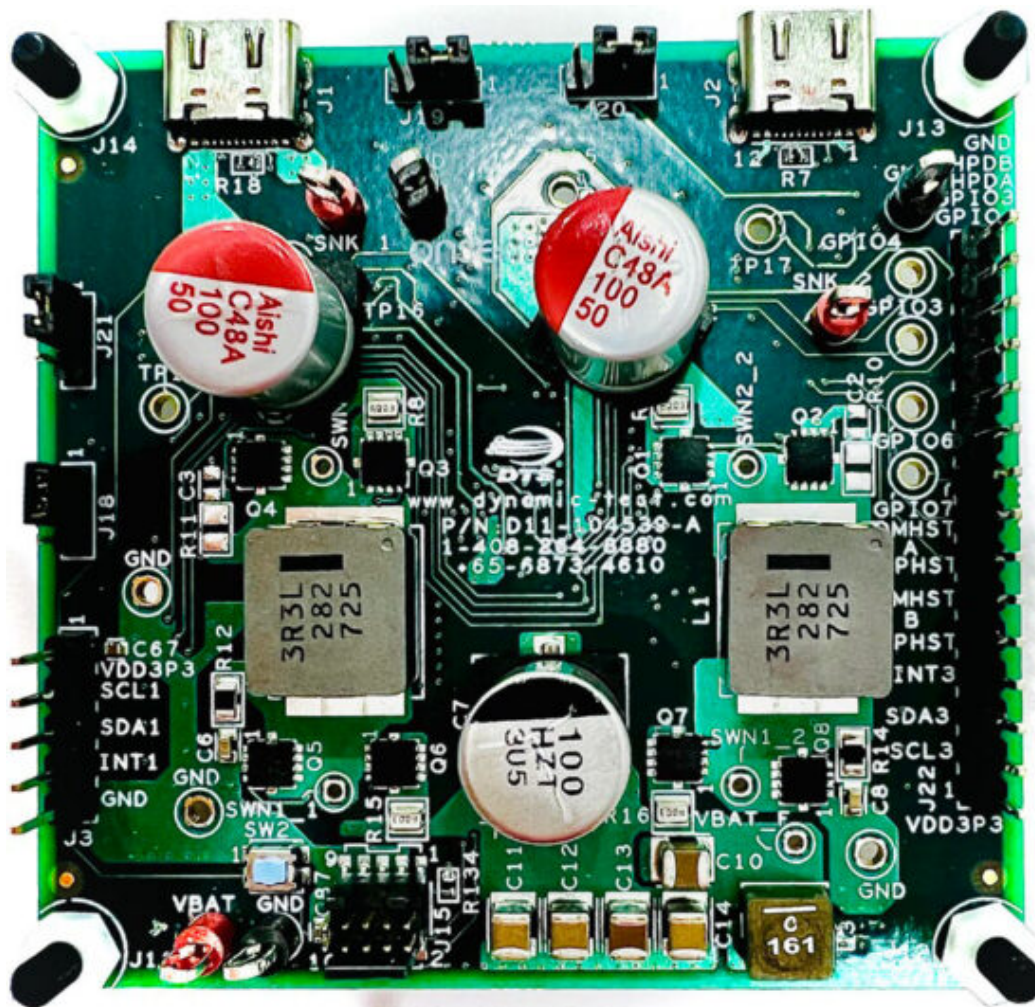
[Home](#) » [onsemi](#) » onsemi FUSB15200 Dual Port USB TYPE-C-PD Controller Owner's Manual 



### Contents

- [1 onsemi FUSB15200 Dual Port USB TYPE-C-PD Controller Owner's Manual](#)
- [2 Documents / Resources](#)
  - [2.1 References](#)

**onsemi FUSB15200 Dual Port USB TYPE-C-PD Controller Owner's Manual**



[www.onsemi.com](http://www.onsemi.com)

## FUSB15200EVBFPG

### Introduction

The FUSB15200 Evaluation Board (EVB) together with the firmware binary provided in the release package permits a customer to program the flash memory and non-volatile memory (NVM) of the FUSB15200.

### Required Hardware and Setup Instructions

- FUSB15200 Evaluation Board (EVB)
- SEGGER J-Link Pro JTAG/SWD programming and debug probe
- 9-Pin Cortex-M Adapter to connect (A) the EVB to (B) J-Link Pro
- External Power Supply

- Use (C) the 9-Pin Adapter to connect (B) the J-Link Pro to the SWD connector (J15) on the socket EVB
- Connect (D) the Power Supply GND to the GND pin of (A) the EVB
- Setup (D) the Power Supply to 12 V (~200 mA) and connect to VBAT pin of (A) the EVB

### Required Software

#### A. SEGGER J-Link Tools

Please download and install the SEGGER J-Link utility

Note: We recommend using version 7.92d. Please make sure SEGGER J-Flash is installed.

## B. FUSB15200 Flash Loader

Please download the FUSB15200 Flash Loader used by J-Link to flash the EVB.

Search for file FUSB15200\_FLASH\_LOADER.ELF

Further instructions on where to place this file will be indicated in the subsequent paragraph.

## C. FUSB15200 Device List AddOn

Please download the FUSB15200 Device AddOn to add the FUSB15200 to the device list xml. Search for file FUSB15200\_XML\_ADDON.TXT

## FUSB15200EVBFPG

Adding FUSB15200 Support to J-Link

There is a need to add the FUSB15200 to the list of J-Link supported devices.

J-Link requires a device support to be added in xml format as follow:

- Create a directory named onsemi\FUSB15200 as follow:  
C:\Users\<USER\_NAME>\AppData\Roaming\SEGGER\JLinkDevices\onsemi\FUSB15200\
- Rename the file (C) FUSB15200\_XML\_ADDON.TXT to Devices.xml and place it in the following directory:  
C:\Users\<USER\_NAME>\AppData\Roaming\SEGGER\JLinkDevices\onsemi\FUSB15200\
- Copy the file (B) from section “Required Software” into  
C:\Users\<USER\_NAME>\AppData\Roaming\SEGGER\JLinkDevices\onsemi\FUSB15200\

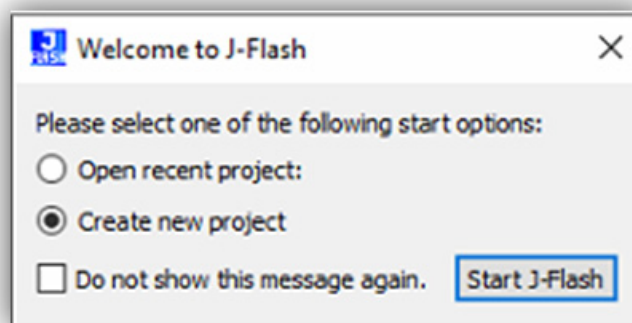
## Programming the FSUB15200 Flash

Complete the following 4 steps:

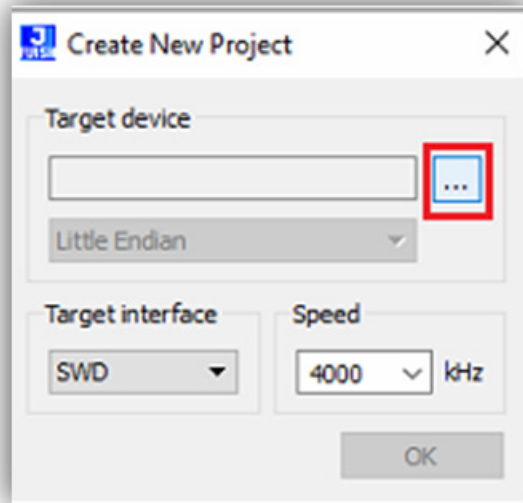
- a. Connect J-Link to the EVB
- b. Erase the Flash Content
- c. Program the Flash Content
- d. Validate Flash Content

a) Connect J-Link to the EVB

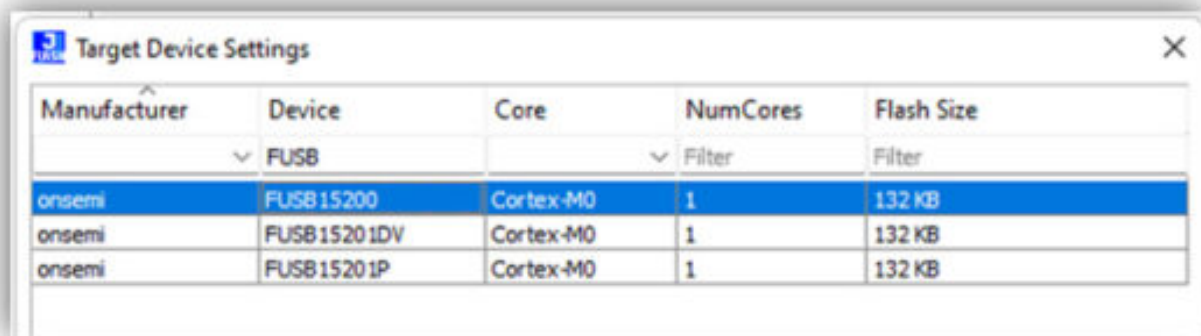
- Open the SEGGER J-Flash and select “Create new project” then “Start J-Flash”



- Click on the selection box

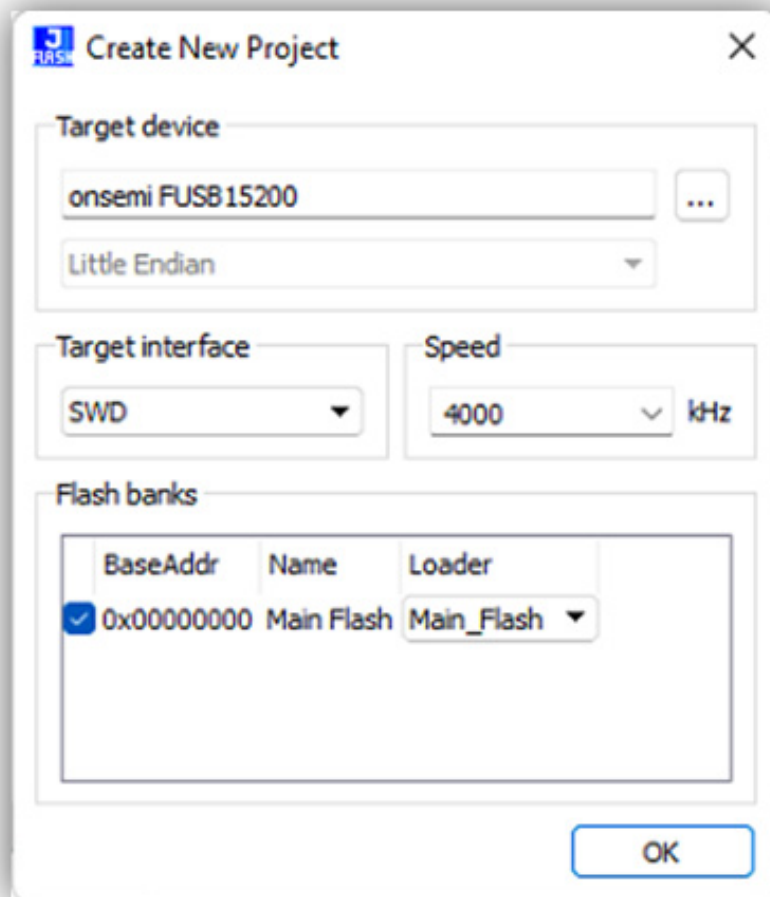


- Select FUSB15200



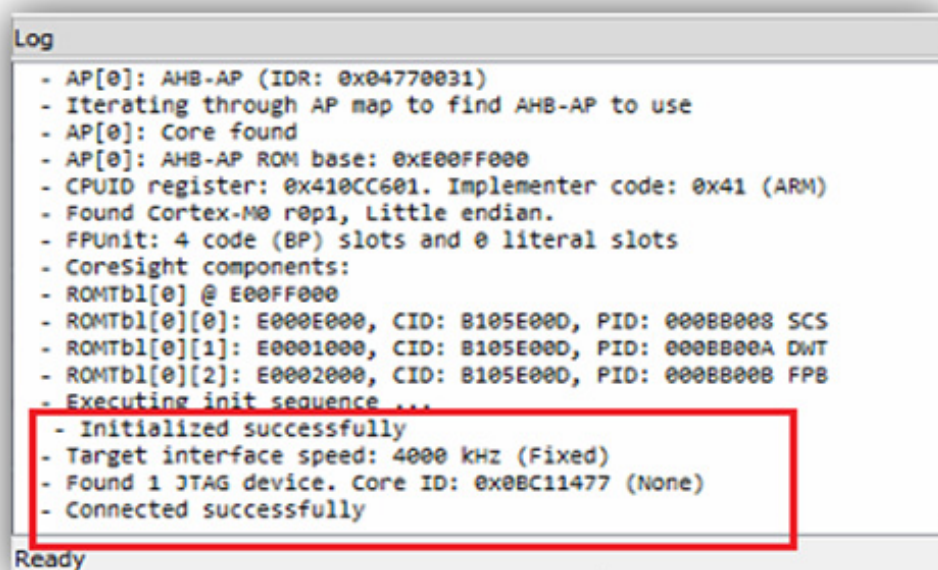
- Select Target interface: SWD
- Select Speed: 4000 kHz
- Click OK for the new project to be created





- From the menu go to Target
- Then go to Connect

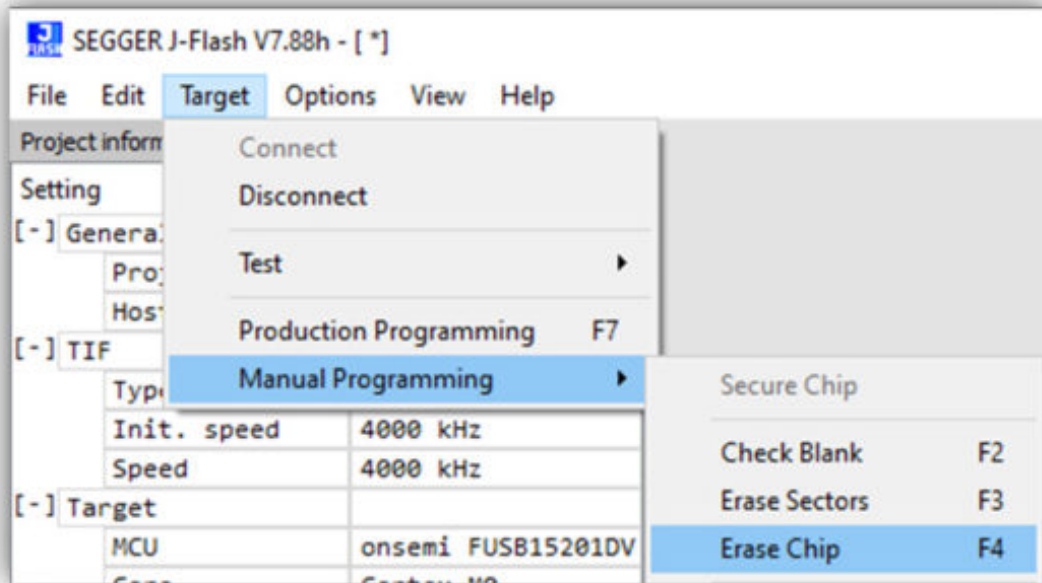
If the connection is established, you should see a message on the Log indicating a successful connection.



## b) Erase the Flash Content

- From the menu, choose Target.

- From the resulting window, choose Manual Programming.
- Select Erase Chip. J-Flash erases the chip and reports a successful Erase operation.



### c) Program the Flash Content

- Drag the appropriate .bin file into the J-Flash window.
- J-Flash asks for a start address, please accept the default 0x0 as follow:























---

## Documents / Resources

	<p><a href="#">onsemi FUSB15200 Dual Port USB TYPE-C-PD Controller</a> [pdf] Owner's Manual FUSB15200 Dual Port USB TYPE-C-PD Controller, FUSB15200, Dual Port USB TYPE-C-PD C ontroller, Port USB TYPE-C-PD Controller, USB TYPE-C-PD Controller, TYPE-C-PD Controller, Controller</p>
---	---

## References

-  [9-Pin Cortex-M Adapter \(8.06.02\) - SEGGER | Embedded Systems Development Tools | USA Web Shop](#)
-  [SEGGER - The Embedded Experts - Downloads](#)
-  [SEGGER J-Link PRO](#)
- [User Manual](#)

[Manuals+](#), [Privacy Policy](#)

This website is an independent publication and is neither affiliated with nor endorsed by any of the trademark owners. The "Bluetooth®" word mark and logos are registered trademarks owned by Bluetooth SIG, Inc. The "Wi-Fi®" word mark and logos are registered trademarks owned by the Wi-Fi Alliance. Any use of these marks on this website does not imply any affiliation with or endorsement.