



## onnlne 2CCT Modular Luminaire Instruction Manual

[Home](#) » [onnlne](#) » onnlne 2CCT Modular Luminaire Instruction Manual 

# onnlne<sup>®</sup>

Modular luminaire  
Onnpanel Multi Modular  
2CCT



## Contents

[1 Specification](#)

[parameter](#)

[2 Installation procedure](#)

[3 Documents /  
Resources](#)

[3.1 References](#)

[4 Related Posts](#)

## Specification parameter

Model number	DEH956
Dimension (mm)	595 x 595 x 30
Wottage	19-39W
Voltage	220-240V—
Frequency	50/60Hz
Color temperature	3000K/4000K
IP level	IP20
Lifespan	L80820 50,000H

## Important safety instruction

To ensure correct function and safety, please read and follow all instruction carefully before using the product, Basic safety precautions should always be followed when installing, including the following:

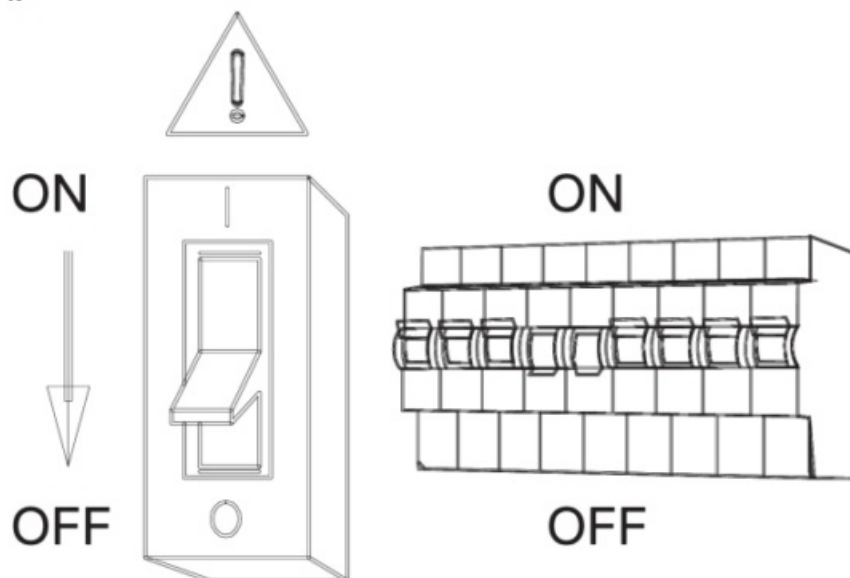
1. Turn off power supply before installation or before doing any maintenance, cleaning, changing the globe or adjustment to the fitting.
2. Do not install any luminaire near the heat source.
3. IP grade please refer to product label, only IP54 can be used in wet or damp locations,
4. Do not exceed the nominal supply voltage or amperage ratings.
5. Dimmable version could be compatible with a wide range of recommended TRIAC dimmers.
6. All wiring and installation of the light fitting must adhere to local and national wiring rules.
7. Take care not to pull any electrical wires during unpacking as this may damage the connection.
8. Layout all the components on a smooth surface and make sure there are no components missing before assembling.
9. To avoid injury or damage to the fitting, please ensure that power leads and screws are secure before connecting the power.
10. Please keep instruction for future reference.

## Warning:

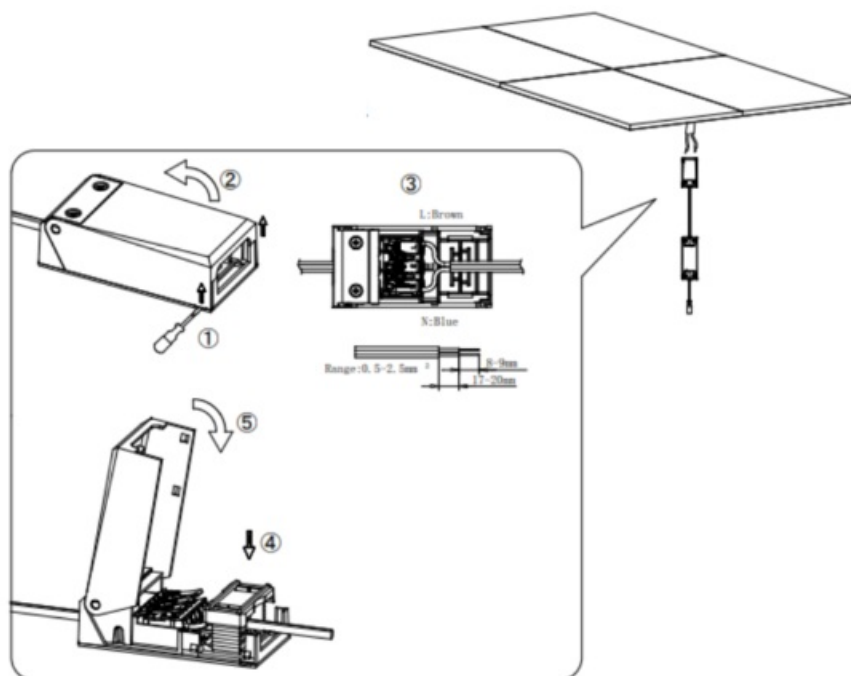
1. Only for indoor use, protecting from high magnetic, voltage and thunder surrounding.
2. Correct wiring, and securely installed.
3. Only use in rated voltage.

4. Cut off the power source before connect the wires.
5. Should not be installed without valid documents
6. Please ask for help from professional electrician when installation
7. Would not get the quality assurance if unauthorized dismantling of the product.

## Installation procedure



option 2: on/off version

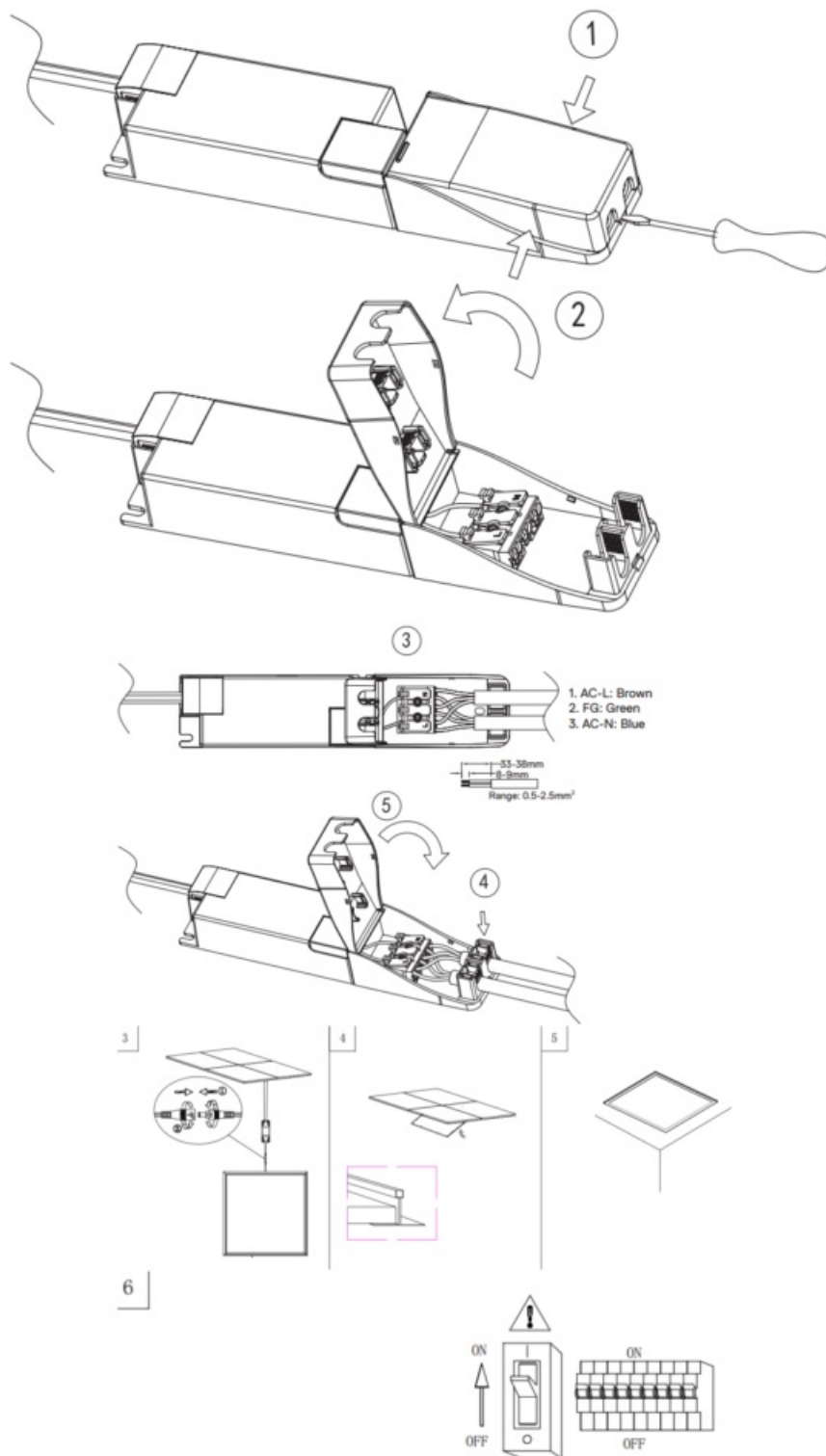


Other ratings see selection sheet

Output			Switch			
Po (W)	Lo (mA)	Uo (Vdc)	1	2	3	4
21	500	28-42	—	—	—	—
23.1	550	28-42	ON	—	—	—
25.2	600	28-42	—	ON	—	—
27.3	650	28-42	—	—	ON	—
29.4	700	28-42	—	—	—	ON
31.5	750	28-42	ON	—	—	ON
33.6	800	28-42	—	ON	—	ON
35.7	850	28-42	—	—	ON	ON
37.8	900	28-42	ON	—	ON	ON
39.9	950	28-42	—	ON	ON	ON
40	1000	28-40	ON	ON	ON	ON

#### DEH956/-120lm/w-ON/OFF-TFD

Currents	3000K		4000K	
Currents	System power	Lumen output	System power	Lumen output
500mA	19w	2212 lm	19w	2518 lm
550mA	21w	2415 lm	21w	2688 lm
600mA	23w	2645 lm	23w	2944 lm
650mA	25w	2828 lm	25w	3196 lm
700mA	27w	3051 lm	27w	3429 lm
750mA	29w	3277 lm	29w	3683 lm
800mA	31w	3457 lm	31w	3854 lm
850mA	33w	3795 lm	33w	4092 lm
900mA	35w	3990 lm	35w	4340 lm
950mA	37w	4090 lm	37w	4403 lm
1000mA	39w	4557 lm	39w	4603 lm



1. Cut off the power source before installation.

Carefully unpack unit and properly inspect for defects before installing.

2. Remove the ceiling tile from the location where you wish to install the LED PANEL.

3. Make electrical connections from power supply according the wire connection instruction.

4. Place the fixture in the appropriate T-bar ceiling structure.

5. Reconnect the main power supply.




This symbol on products and or accompanying documents indicates that used and end of life electrical and electronic equipment should not be disposed of in household waste. For the proper disposal, treatment, recovery and recycling, please take these products to designated collection points, where they will be accepted on a free of

charge basis. Alternatively, in some countries you may be able to return your products to your retailer upon the purchase of an equivalent new product. Disposing of this product correctly will help to save valuable resources and prevent any potential adverse effects on human health and the environment which could otherwise arise from inappropriate waste disposal and handling. Please contact your local authority for further details of your nearest designated collection point. Penalties may be applicable for incorrect disposal of this waste in accordance with national legislation.



## Documents / Resources

	<p><a href="#">onnline 2CCT Modular Luminaire</a> [pdf] Instruction Manual 2CCT Modular Luminaire, 2CCT, Modular Luminaire, 2CCT Luminaire</p>
---	--

## References

- [Onninen](#)
- [User Manual](#)

[Manuals+](#), [Privacy Policy](#)

This website is an independent publication and is neither affiliated with nor endorsed by any of the trademark owners. The "Bluetooth®" word mark and logos are registered trademarks owned by Bluetooth SIG, Inc. The "Wi-Fi®" word mark and logos are registered trademarks owned by the Wi-Fi Alliance. Any use of these marks on this website does not imply any affiliation with or endorsement.