

onninen
onninen
DFR303
Sensor
Luminaire



onninen DFR303 Sensor Luminaire User Manual

[Home](#) » [onninen](#) » onninen DFR303 Sensor Luminaire User Manual 

Contents

- [1 onninen DFR303 Sensor Luminaire](#)
- [2 Specification](#)
- [3 Safety instruction](#)
- [4 Installation](#)
- [5 Installation diagram](#)
- [6 Sensor Information](#)
- [7 Maintenance](#)
- [8 Frequently Asked Questions](#)
- [9 Documents / Resources](#)
 - [9.1 References](#)
- [10 Related Posts](#)

onninen

onninen DFR303 Sensor Luminaire



Operation instruction (GB)

Please read the use instructions carefully before use. And please keep this instruction for future reference.

Specification

SAP code	DFR303	DFR304	DFR305
Supply Voltage	220-240 V~50 Hz	220-240 V~50 Hz	220-240 V~50 Hz
Power Consumption	20 W	30 W	50 W
Lumen Output	2400 lm	3600 lm	6000 lm
Color Temperature	4000 K	4000 K	4000 K
CRI	>80	>80	>80
Beam angle	100°	100°	100°
Power Factor	0.9	0.9	0.9
Operating Temp Range	-35°C to 50°C	-35°C to 50°C	-35°C to 50°C
IP Rating	IP44	IP44	IP44
Safety Classification	Class I	Class I	Class I
Dimensions (LxWxH m m)	102.3 x 118.5 x 49mm	131.8 x 147 x 49 mm	173 x 180 x 49 mm
Installation	wall mounted	wall mounted	wall mounted

Safety instruction

Electrical products can cause death or injury damage to property. If in any doubt about the installation or use of this product, please consult a competent electrician.

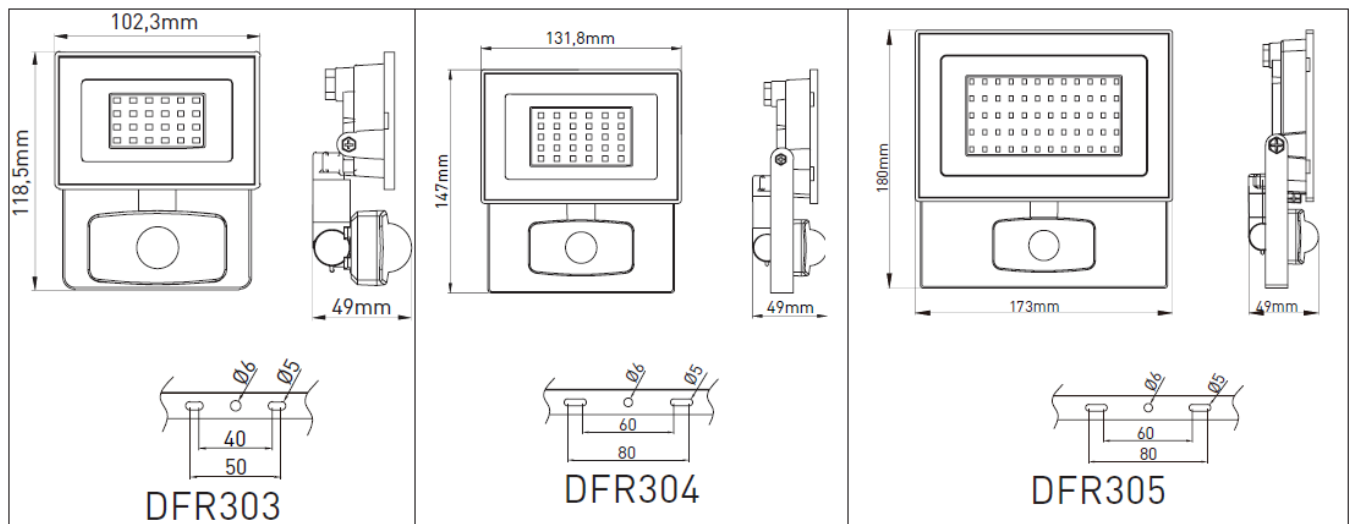
1. Before mounting and maintenance please make sure that the electrical supply has been switched off to avoid electric shock.
2. The light must be earthed.
3. Replace the cracked protection glass immediately and use only original parts to substitute.
4. Before maintenance work, the power should be switched off. The maintaining should be done only by a qualified electrician.

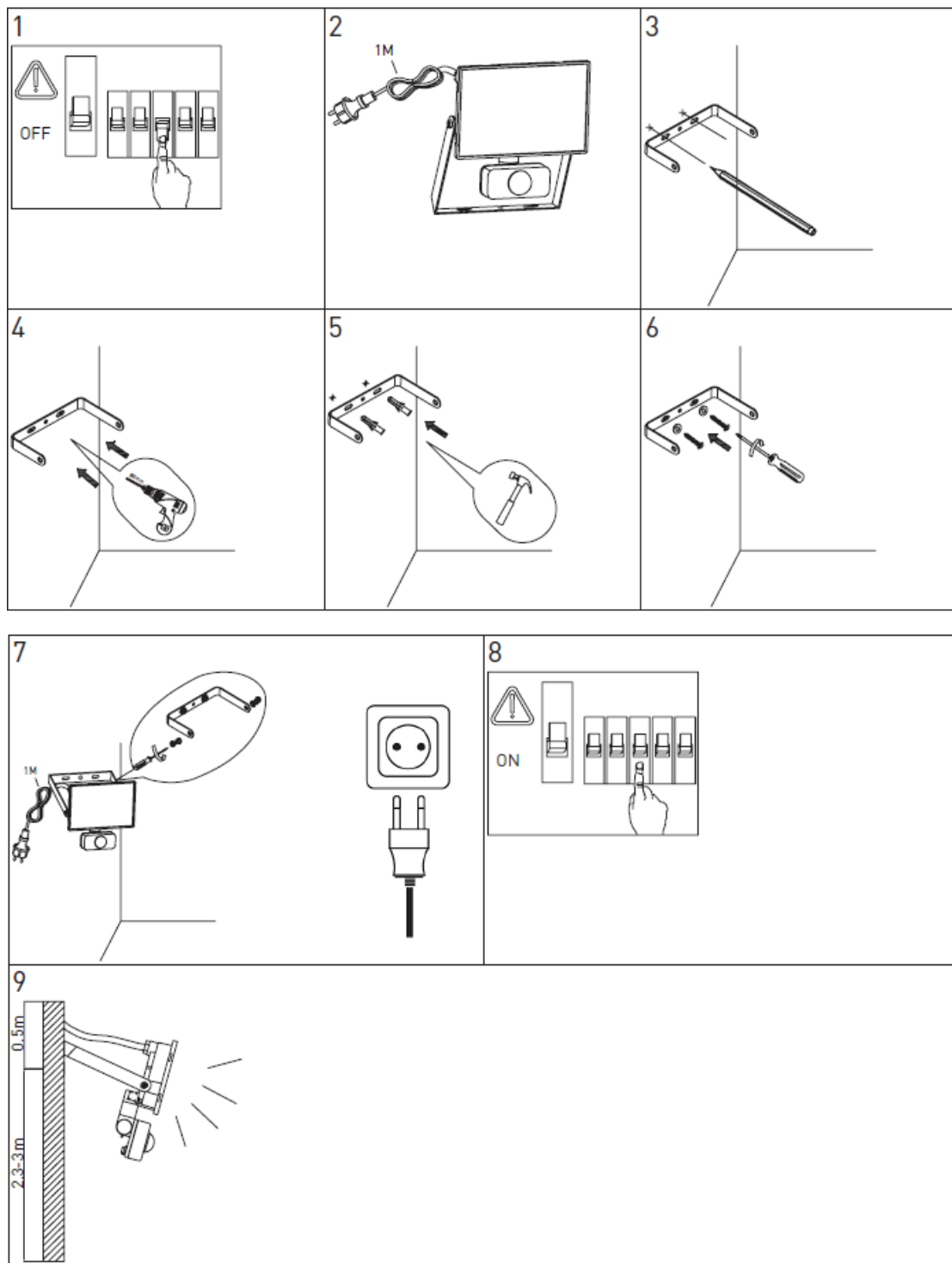
Installation

1. Select suitable location for luminaire.
2. Remove bracket from luminaire, mark wall with appropriate fixing positions. Before drilling, ensure that the hole does not impinge on pipe work, cables or other building services.
3. Mount bracket on wall and re-attach luminaire.
4. The luminaire is supplied with exposed 1.0m of rubber cable with IP44 Euro Plug.
5. This product has no user serviceable parts. If any part is damaged, disconnect from mains and discontinue use.

Remark: The fitting do not provide “assembly screws” please use the properly screw to install the product.

Installation diagram





Sensor Information

- **Adjusting the sensitivity:**

The sensitivity means the Maximum distance which PIR Sensor can be triggered by movement body. Turning the SENS knob from (+) to (-) will decrease the sensitivity.

Maximum distance: $8 \pm 2M$

Minimum distance: 4M

- **Adjusting the duration time:**

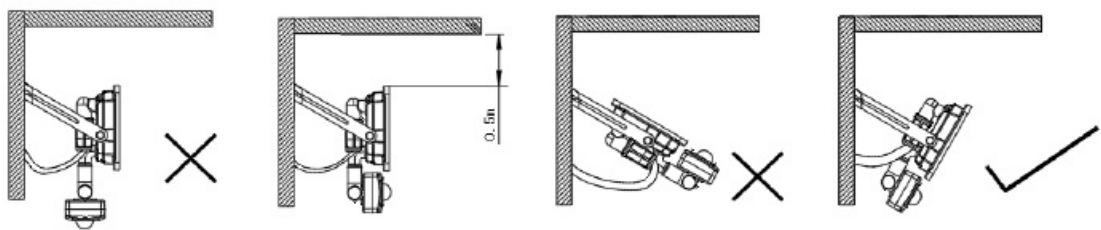
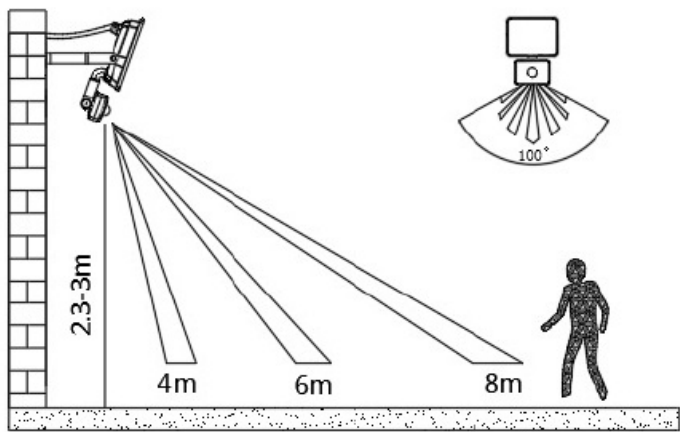
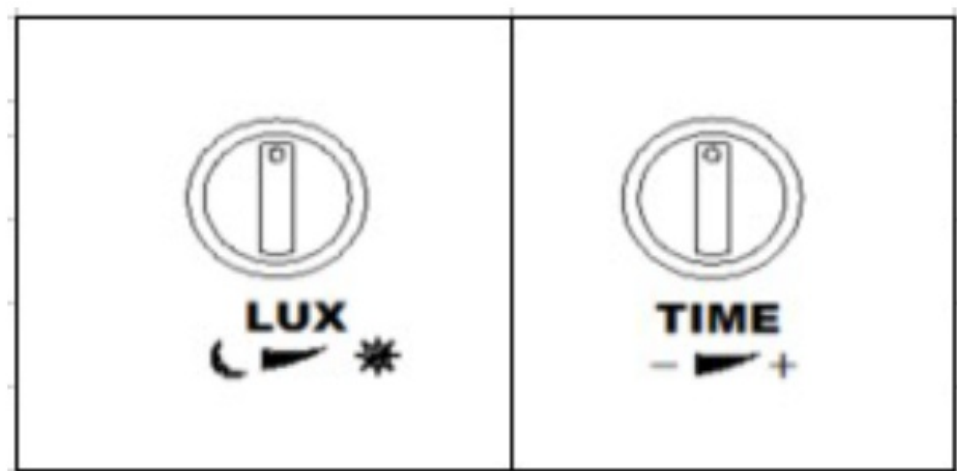
The length of time that remains switched on after activation can be adjusted from 10 seconds to 10 minutes.

Rotating the TIME knob from (+) to (-) will reduce the duration time.

- **Adjusting the lux control level:**

The Lux control module has a built-in sensing device (photocell) that detects daylight and darkness. Rotating

the LUX knob clockwise is from light (☀) to dark (🌙). The (☀) position denotes that the Floodlights can work at day and night, and the (☀) position only work at night. You can set to operate the unit at the desired level by adjusting the LUX knob.



Maintenance

CAUTION: The light source of this luminaire is not replaceable; when the light source reaches its end of life the whole luminaire shall be replaced.

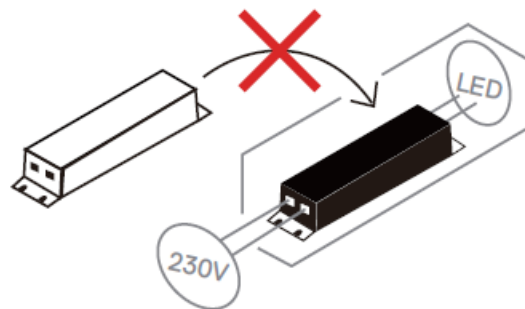


This marking indicates that this product should not be disposed with other household wastes throughout the EU. To prevent possible harm to the environment or human health from uncontrolled waste disposal, recycle it responsibly to promote the sustainable reuse of material resources. To return your used device, please use the return and collection systems or contact the retailer where the product was purchased. They can take this product for environmental safe recycling.

This product contains light source which has energy efficiency class E.



- Non-replaceable light source



- Non-replaceable control gear

Frequently Asked Questions

- **Q: Can I replace the light source in this luminaire?**

A: No, the light source is not replaceable. When it reaches its end of life, the entire luminaire should be replaced.

- **Q: What should I do if any part of the luminaire is damaged?**

A: Disconnect the luminaire from the power source immediately and discontinue use. Do not attempt to repair it yourself.

- **Q: How do I recycle this product responsibly?**

A: To promote sustainable reuse of material resources, do not dispose of this product with household waste. Contact your retailer for safe recycling options.

Documents / Resources

	onninen DFR303 Sensor Luminaire [pdf] User Manual DFR303, DFR304, DFR305, DFR303 Sensor Luminaire, DFR303, Sensor Luminaire, Luminaire
---	---

References

- [User Manual](#)

Manuals+. Privacy Policy

This website is an independent publication and is neither affiliated with nor endorsed by any of the trademark owners. The "Bluetooth®" word mark and logos are registered trademarks owned by Bluetooth SIG, Inc. The "Wi-Fi®" word mark and logos are registered trademarks owned by the Wi-Fi Alliance. Any use of these marks on this website does not imply any affiliation with or endorsement.