

onn ONA14TA062 Bluetooth Keyboard Folio



onn ONA14TA062 Bluetooth Keyboard Folio User Manual

[Home](#) » [Onn](#) » onn ONA14TA062 Bluetooth Keyboard Folio User Manual 

Contents

- [1 onn ONA14TA062 Bluetooth Keyboard Folio](#)
- [2 In the box](#)
- [3 Using the wireless bluetooth keyboard](#)
- [4 iPad connecting settings](#)
- [5 Legal information](#)
- [6 Limited warranty](#)
- [7 Documents / Resources](#)
 - [7.1 References](#)



onn ONA14TA062 Bluetooth Keyboard Folio



In the box



Wireless Bluetooth® Keyboard



Micro USB Cable



User Manual

NOTE: Regarding battery life

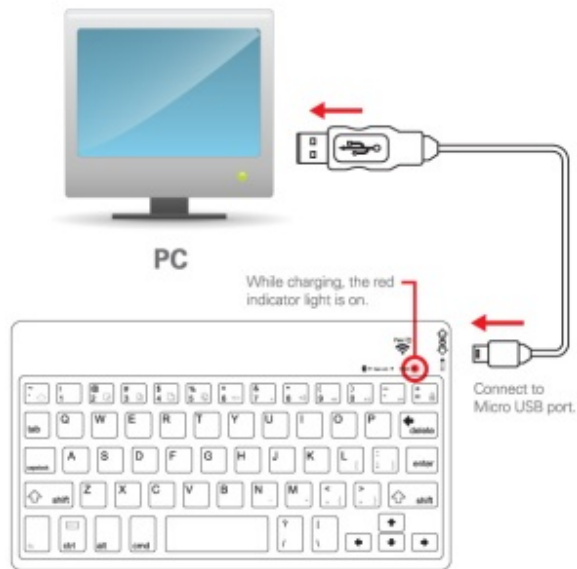
- **Continues use:** up to 40 hours.
- **Stand by:** 300 hours

Using the wireless bluetooth keyboard

Charging the keyboard

Charge your Bluetooth Keyboard fully before use.

1. Connect the small end of the included Micro USB Cable to the USB charger, ng μorl on the side of the Keyboard.
2. Connect the large end of the included Micro USB cable to an ava available USB port on your computer (or other dev ces made for USB charging



Charge your Keyboard with a PC. MAC or USB adapter

3. The LED Charge Indicator Light on the Keyboard will light up RED when charging
4. The LED Charge Indicator Light on the Keyboard will turn OFF when finished charging



Turning the Keyboard ON/OFF

1. To turn ON, Slide the switch to the ON position. The Bluetooth light will blink once, and then the Caps Lock light will blink once.
2. To turn OFF, Slide the switch to the OFF position. The Bluetooth light will blink 3 times and the Keyboard will turn OFF.



Pairing the Keyboard to a Bluetooth-enabled tablet

1. Make sure the Bluetooth Keyboard is turned ON.

2. Press and HOLD the [Pair] button for 6 full seconds and the [Bluetooth] light will flash continuously – the Keyboard is now in pairing mode.
3. Keep the Keyboard and tablet or other Bluetooth device) within 2 feet of each other during the paring process.
4. Set your tablet (or other Bluetooth devices) to search for Bluetooth devices

iPad connecting settings

- **Step 1:**



On your, Pad®, tap the icon from the Home Screen.

- **Step 2:**

Click **General**



- **Step 3:**

Click **Bluetooth**



- **Step 4:**

Toggle Bluetooth to **On**



- **Step 5:**

The keyboard will show up under **Devices** on the iPad. Select **Bluetooth Keyboard**.

- **Step 6:**

A code will appear on the screen. Enter this code on the keyboard and click **Enter**.

A message will pop up when pairing is successful. If pairing fails, repeat the steps above.

Legal information

FCC Part 15:

Warning: Changes or modifications to this unit not expressly approved by the party responsible for compliance could void the user's authority to operate the equipment. **NOTE:** This equipment has been tested and found to comply with the limits for a Class B digital device, under Part 15 of the FCC Rules. These limits are designed to provide reasonable protection against harmful interference in a residential installation. This equipment generates, uses and can radiate radio frequency energy and, if not installed and used in accordance with the instructions, may cause harmful interference to radio communications. However, there is no guarantee that interference will not occur in a particular installation. If this equipment does cause harmful interference to radio or television reception, which can be determined by turning the equipment off and on, the user is encouraged to try to correct the interference by one or more of the following measures:

- Reorient or relocate the receiving antenna.
- Increase the separation between the equipment and the receiver.
- Connect the equipment to an outlet on a circuit different from that to which the receiver is connected.
- Consult the dealer or an experienced radio/TV technician for help.



Bluetooth™

The Bluetooth word mark and logos are registered trademarks owned by Bluetooth SIG, Inc. iPad is a trademark of Apple Inc., registered in the U.S. and other countries. All trademarks and trade names are those of their respective owners.

Limited warranty

In the unlikely event that this product is defective, or does not perform properly, you may within One (1) Year from your original date of purchase return it to the authorized service centre for repair or exchange.

TO OBTAIN WARRANTY SERVICE:

- Provide proof of the date of purchase within the package (Dated bill of sale).
- Prepay all shipping costs to the authorized service centre, and remember to insure your return.
- Include a return shipping address (no P.O. Boxes), a telephone contact number, and the defective unit within

the package.

- Describe the defect or reason you are returning the product. Your product will be repaired or replaced, at our option, for the same or similar model of equal value if examination by the service center determines this product is defective. Products received damaged as a result of shipping will require you to file a claim with the carrier.

The shipping address of the authorized service centre is:



- Southern Telecom, Inc.
- **Attention:** Customer Service (2nd Floor)
- 14-C 53rd Street
- Brooklyn, NY 11232

Should you have any questions or problems concerning this product, please contact our customer service department at:

Customer Support

- **Phone:** 1-877-768-8481 (Toll-Free) Or via the web:
- www.southerntelecom.com Click on "Product Support"

Warranty service not provided

This warranty does not cover damage resulting from accident, misuse, abuse, improper installation or operation, lack of reasonable care, and unauthorized modification. This warranty is voided in the event any unauthorized person opens, alters or repairs this product. All products being returned to the authorized service centre for repair must be suitably packaged.

Limitation of Warranty


- THE WARRANTY STATED ABOVE IS THE ONLY WARRANTY APPLICABLE TO THIS PRODUCT. ALL OTHER WARRANTIES, EXPRESS OR IMPLIED (INCLUDING ALL IMPLIED WARRANTIES OF MERCHANTABILITY OR FITNESS FOR A PARTICULAR PURPOSE) ARE HEREBY DISCLAIMED. NO VERBAL OR WRITTEN INFORMATION GIVEN BY SOUTHERN TELECOM, INC., ITS AGENTS, OR EMPLOYEES SHALL CREATE A GUARANTEE OR IN ANY WAY INCREASE THE SCOPE OF THIS WARRANTY.
- REPAIR OR REPLACEMENT AS PROVIDED UNDER THIS WARRANTY IS THE EXCLUSIVE REMEDY OF THE CONSUMER. SOUTHERN TELECOM, INC. SHALL NOT BE LIABLE FOR INCIDENTAL OR CONSEQUENTIAL DAMAGES RESULTING FROM THE USE OF THIS PRODUCT OR ARISING OUT OF ANY BREACH OF ANY EXPRESS OR IMPLIED WARRANTY ON THIS PRODUCT. THIS DISCLAIMER OF WARRANTIES AND LIMITED WARRANTIES ARE GOVERNED BY THE LAWS OF THE STATE OF NEW YORK. EXCEPT TO THE EXTENT PROHIBITED BY APPLICABLE LAW, ANY IMPLIED WARRANTY OF MERCHANTABILITY OR FITNESS FOR A PARTICULAR PURPOSE ON THIS PRODUCT IS LIMITED TO THE APPLICABLE WARRANTY PERIOD SET FORTH ABOVE.

Some states do not allow the exclusion nor limitation of incidental or consequential damages, or limitations on how

long an implied warranty lasts so the above limitations on exclusions may not apply to you. This warranty gives you specific legal rights, and you also may have other rights that vary from state to state

- Distributed by
- Wal-Mart Stores, Inc.
- Bentonville, AR 72716
- Printed in China

Documents / Resources

	onn ONA14TA062 Bluetooth Keyboard Folio [pdf] User Manual ONA14TA062 Bluetooth Keyboard Folio, ONA14TA062, Bluetooth Keyboard Folio, Keyboard Fo lio, Folio
---	---

References

-  [Manual-Hub.com - Free PDF manuals!](#)
- [User Manual](#)

[Manuals+.](#) [Privacy Policy](#)

This website is an independent publication and is neither affiliated with nor endorsed by any of the trademark owners. The "Bluetooth®" word mark and logos are registered trademarks owned by Bluetooth SIG, Inc. The "Wi-Fi®" word mark and logos are registered trademarks owned by the Wi-Fi Alliance. Any use of these marks on this website does not imply any affiliation with or endorsement.