

onn B2I 6 Button Wireless Mouse



onn B2I 6 Button Wireless Mouse User Guide

[Home](#) » [Onn](#) » onn B2I 6 Button Wireless Mouse User Guide 

Contents

- [1 onn B2I 6 Button Wireless Mouse](#)
- [2 Product Information](#)
- [3 Product Usage Instructions](#)
- [4 FEATURES](#)
- [5 Overview](#)
- [6 Operation, Setting Up Mouse](#)
- [7 Warranty](#)
- [8 Specifications](#)
- [9 Troubleshooting](#)
- [10 Documents / Resources](#)
 - [10.1 References](#)
- [11 Related Posts](#)

onn

onn B2I 6 Button Wireless Mouse



Product Information

Specifications

- Product Name: 6-Button Wireless Mouse
- Model Number: 100162482_EN_10302024
- Dimensions: 3.75 x 3.75 inches (9.525 x 9.525 cm)
- Connectivity: USB nano receiver, Bluetooth
- Buttons: Left Button, Right Button, Easy Switch USB nano receiver, Bluetooth 1, Back Button, Bluetooth 2, Forward Button, Scroll Wheel Middle Button, DPI Switch

Product Usage Instructions

Installing Battery

1. Remove the battery cover from the mouse.
2. Insert the AA battery into the compartment.
3. Replace the battery cover.

Setting Up Mouse

1. For USB Receiver Connection:
 1. Connect the USB receiver to an available USB-A port on your computer.
 2. Turn on the power of the mouse.
2. For Bluetooth Connection:
 1. Select Bluetooth 1 or 2 on the mouse.
 2. Press and hold the Connect button to set the mouse in Bluetooth pairing mode (LED indicator will blink).

Setting Up Computer

1. For Windows:

1. Click on Start, go to Settings -> Devices -> Bluetooth & other devices.
2. Turn on Bluetooth and select "Add Bluetooth or another device" -> "Add a device (Bluetooth)".
3. Find onn BTMouse in the list and complete Bluetooth pairing.

FAQs

- **Q: How do I change the DPI settings on the mouse?**

A: The DPI settings can be changed using the DPI Switch button located on the mouse. Press the button to cycle through different DPI levels.

- **Q: Can I use this mouse with a Mac computer?**

A: Yes, you can use the mouse with a Mac computer by connecting it either through the USB receiver or via Bluetooth pairing.

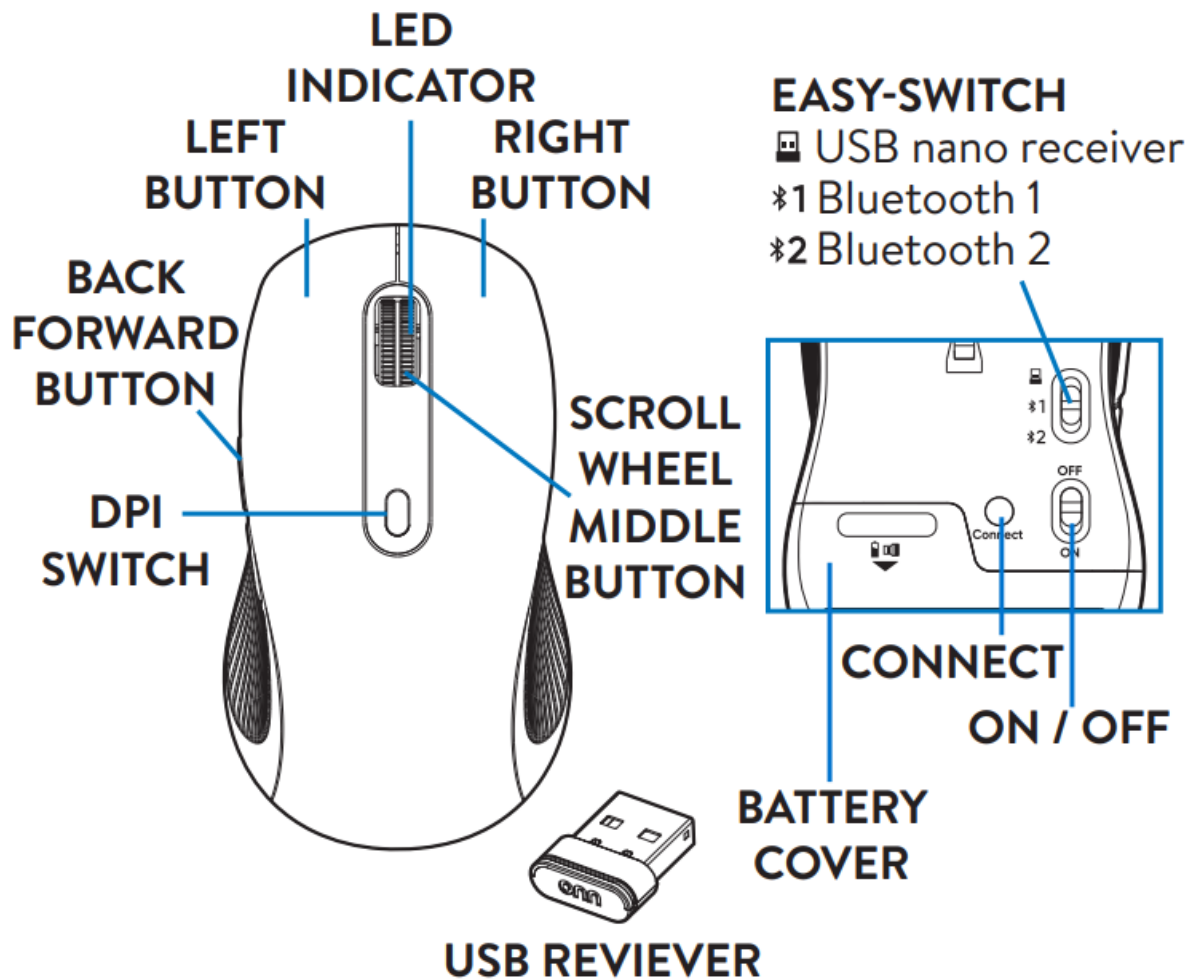
FEATURES

- Connect wirelessly and switch easily to up to 3 different devices with Bluetooth® technology or 2.4GHz nano receiver
- 5 Clickable buttons, metal scroll wheel, on/off switch and connection switch
- Comfortable ergonomic design
- 5 Adjustable DPI sensitivity levels: 600/1000/1600/2400/3600 DPI
- 2 Bluetooth® wireless connection channels
- 2.4GHz USB nano receiver (stores in battery compartment when not in use)
- Windows, MacOS, ChromeOS, Android, iOS compatible
- USB plug-and-play

SCAN HERE FOR MORE PRODUCT INFORMATION AND LEAVE US A REVIEW!



Overview



FCC

FCC compliance statement

This equipment has been tested and found to comply with the limits for a Class B digital device, pursuant to Part 15 of the FCC Rules. These limits are designed to provide reasonable protection against harmful interference in a residential installation. This equipment generates, uses and can radiate radio frequency energy and, if not installed and used in accordance with the instructions, may cause harmful interference to radio communications. However, there is no guarantee that interference will not occur in a particular installation. If this equipment does cause harmful interference to radio or television reception, which can be determined by turning the equipment off and on, the user is encouraged to try to correct the interference by one of the following measures:

- Reorient or relocate the receiving antenna.
- Increase the separation between the equipment and the receiver.
- Connect the equipment into an outlet on a circuit different from that to which the receiver is connected.
- Consult the dealer or an experienced radio/TV technician for help.

This device complies with Part 15 of the FCC Rules. Operation is subject to the following two conditions: (1) This device may not cause harmful interference, and (2) this device must accept any interference received, including interference that may cause undesired operation.

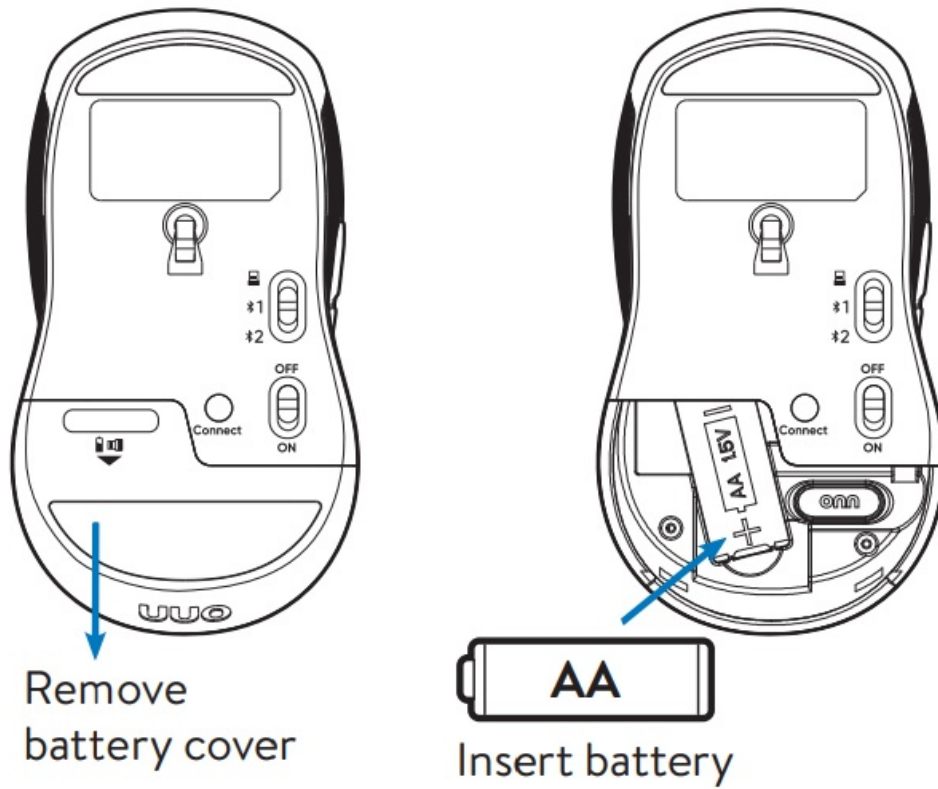
Radiation Exposure Statement:

The product complies with the FCC portable RF exposure limit set forth for an uncontrolled environment and is safe for intended operation as described in this manual. Further RF exposure reduction can be achieved if the product can be kept as far as possible from the user body or set the device to lower output power if such a function is available.

FCC Caution: Any changes or modifications not expressly approved by the party responsible for compliance could void the user's authority to operate this equipment.

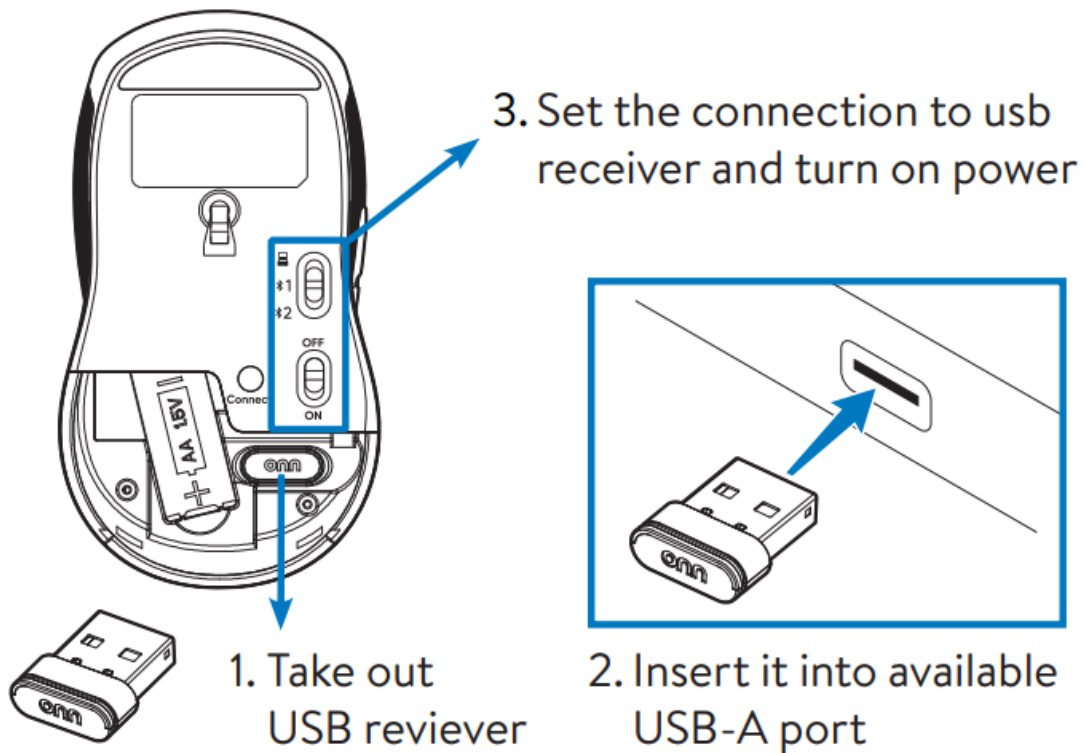
Operation, Setting Up Mouse

INSTALLING BATTERY

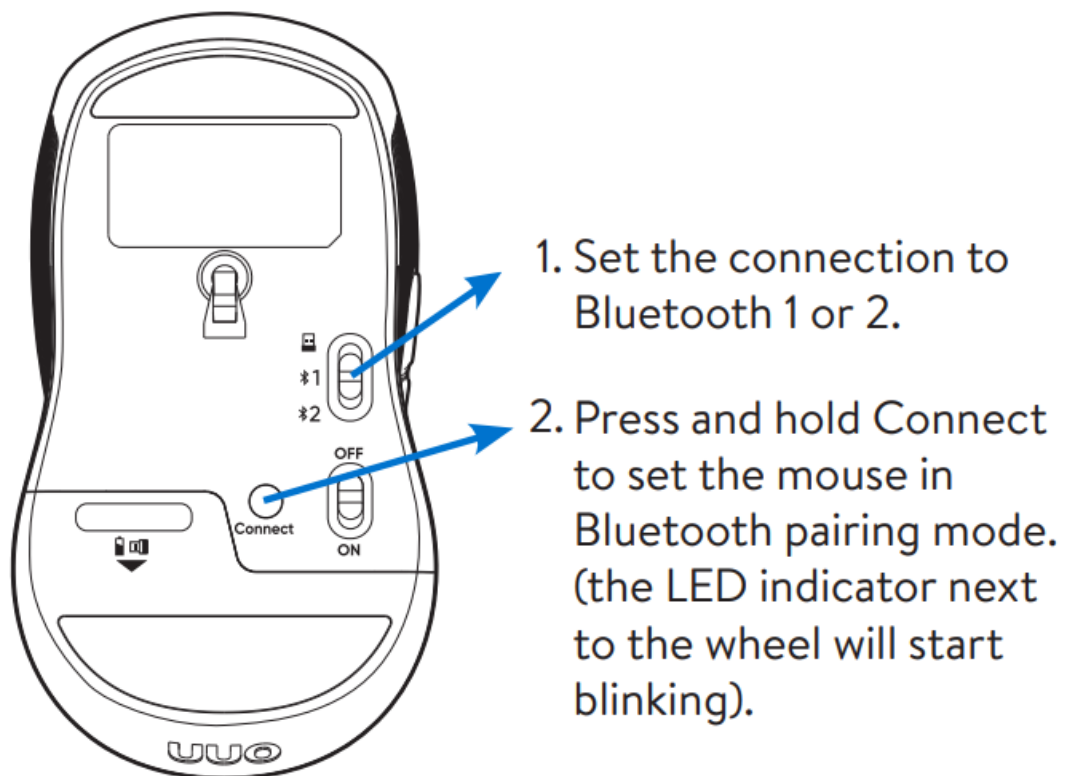


CONNECTION

USB Receiver

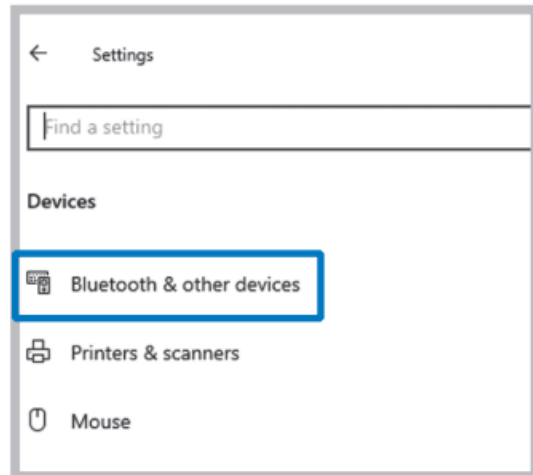
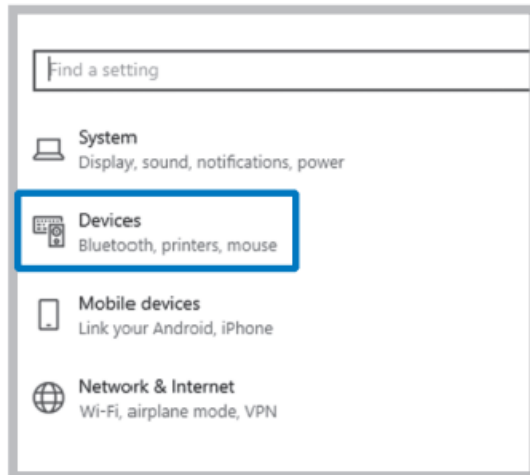
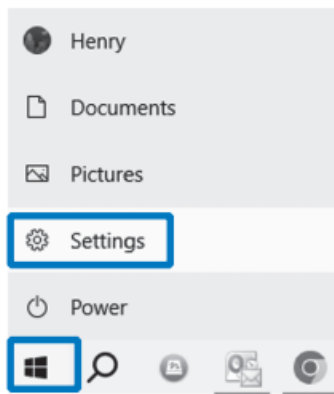


Bluetooth

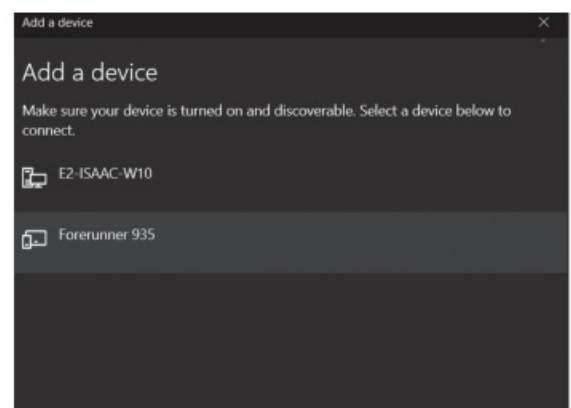
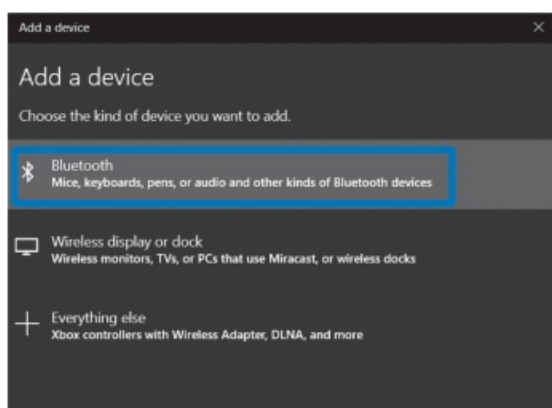
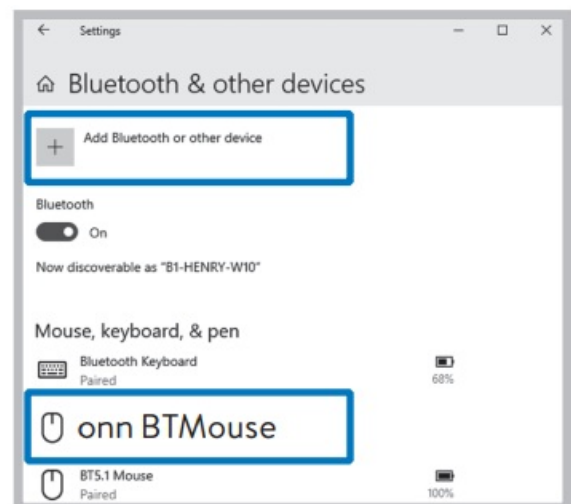


PAIRING

- Windows



- Click on "Start" .
- Go to Settings.
- Device -> Bluetooth & other devices.
- Turn on Bluetooth



- Add Bluetooth or other device

- Add a device (Bluetooth), find “onn BTMouse” in the list and complete Bluetooth pairing.

- **MacOS**



- Click on “Apple menu”.
- Go to System Preferences
- Bluetooth
- Turn it on

Follow same steps as “Windows” to complete Bluetooth pairing.

Warranty

YEAR LIMITED WARRANTY COVERING DEFECTIVE PARTS

Contact the Manufacturer for Additional Information

- This warranty is non-transferable and does not cover failures due to misuse of proper installation or maintenance.
- All warranty coverage applies only if barricade is used in the United States.

Specifications

Specifications

Buttons

5

DPI

800 ~ 3600

Dimensions

4.66 x 2.58 x 1.61 inch

11.8 x 6.5 x 4.1 cm

Operating System

Windows® 7/8/10/11

or later, MacOS 10.5

or later, Android

Chrome OS

Troubleshooting

Problem	Cause	Solution/Prevention
Mouse is not working on USB receiver	Lost connection	Re-plug USB receiver into USB port on computer, set the channel on USB receiver, press the Connect button on the bottom for 10 seconds (keep mouse close to receiver).
	USB port is malfunctioning	Try other properly functioning USB ports on the computer.

Problem	Cause	Solution/Prevention
Mouse is not working on Bluetooth	Lost connection	Set the mouse in Bluetooth pairing mode and pair it with the computer again
	Connected to wrong device	Under Bluetooth connection (either Bluetooth 1 or 2) mouse should automatically reconnect to its last connected computer, but you can always re-pair again.
LED indicator keeps blinking	Battery is low	Change battery (AA)

For product assistance & missing or replacement parts:

WE CAN HELP

1-[888-516-2630](tel:888-516-2630)

7 DAYS/WEEK

7:00am – 9:00pm CST

THIS GUIDE CONTAINS IMPORTANT SAFETY INFORMATION.

PLEASE READ AND KEEP FOR FUTURE REFERENCE.

Find more at [Walmart.com](https://www.walmart.com)

Documents / Resources

	onn B2I 6 Button Wireless Mouse [pdf] User Guide MU138, PRDMU138, mu138, B2I 6 Button Wireless Mouse, B2I, 6 Button Wireless Mouse, Wireless Mouse, Mouse
---	--

References

- [User Manual](#)

[Manuals+](#), [Privacy Policy](#)

This website is an independent publication and is neither affiliated with nor endorsed by any of the trademark owners. The "Bluetooth®" word mark and logos are registered trademarks owned by Bluetooth SIG, Inc. The "Wi-Fi®" word mark and logos are registered trademarks owned by the Wi-Fi Alliance. Any use of these marks on this website does not imply any affiliation with or endorsement.