



Contents [[hide](#)]

- [1 ONKYO GX-10DB Powered Speaker](#)
- [2 Product Usage Instructions](#)
- [3 What's in the box](#)
- [4 Part Names](#)
- [5 Remote Controller](#)
- [6 Setup](#)
- [7 Connections](#)
- [8 Playback](#)
- [9 Advanced Operations](#)
- [10 BLUETOOTH® Playback](#)
- [11 Playing Back](#)
- [12 Troubleshooting](#)
- [13 General Specifications](#)
- [14 FAQ](#)
- [15 Documents / Resources](#)
 - [15.1 References](#)

O N K Y O

ONKYO GX-10DB Powered Speaker

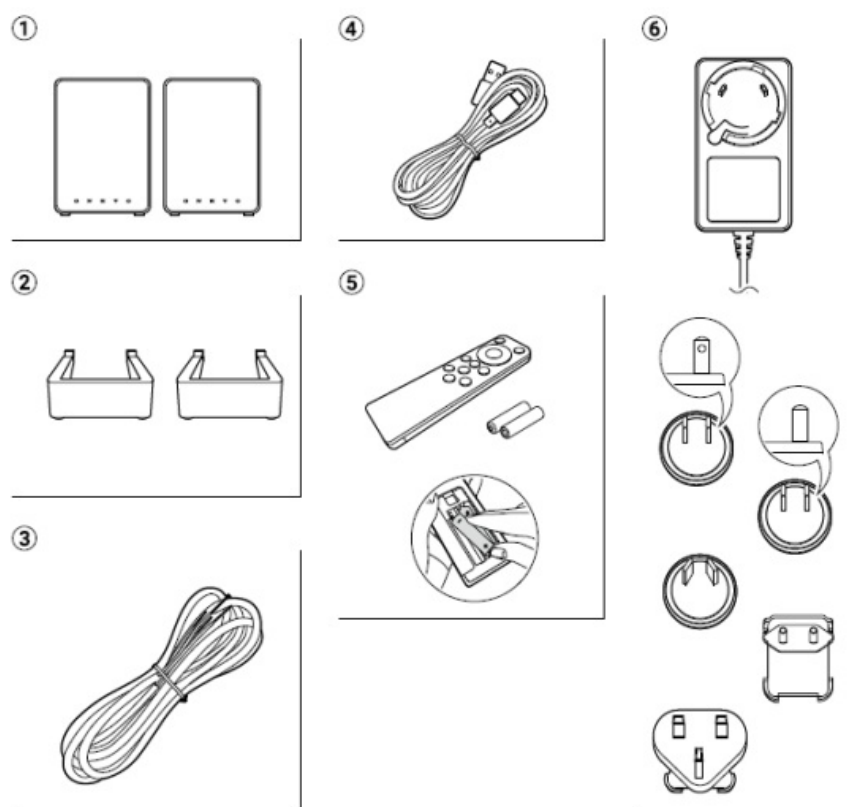


Product Usage Instructions

- Locate the speaker cable (C) provided in the box and connect one end to the Speaker terminal of the Left Speaker and the other end to the Speaker terminal of the Right Speaker.
- Connect the AC adapter to the DC IN terminal (I) on the Rear Panel of the Left Speaker.
- Use the USB cable (D) to connect your PC to the unit via the USB Type-C terminal on the Rear Panel. Ensure your PC is running Windows 10 or later for compatibility.
- Connect a digital optical cable from your TV's optical digital output terminal to the Optical digital input terminal (C) on the unit. Set your TV's audio output to PCM for proper signal transmission.
- Use an analog audio cable to connect your turntable to the RCA stereo terminals on the unit. Adjust the LINE/PHONO selector switch if necessary and connect the ground wire to the GND terminal if available.
- Use a subwoofer cable to connect your subwoofer to the PREOUT SUBWOOFER terminal on the unit for enhanced bass output.
- To turn on/off, use the remote controller's ON/STANDBY button or press the POWER/INPUT switch on the main unit.

- To switch input sources, press the corresponding input selector buttons on the remote controller or use the POWER/INPUT switch on the unit.
- To adjust volume, use the Volume UP/DOWN buttons on the remote controller or turn the VOLUME dial on the main unit. The mute feature is available by pressing the Mute button.
- To set flat sound mode to On or Off, use the provided options to enhance or reproduce sound without bass and treble enhancements.
- Turn on the unit by pressing the ON/STANDBY button.
- Press the BLUETOOTH button for pairing mode. The LED Source Indicator will blink blue.

What's in the box

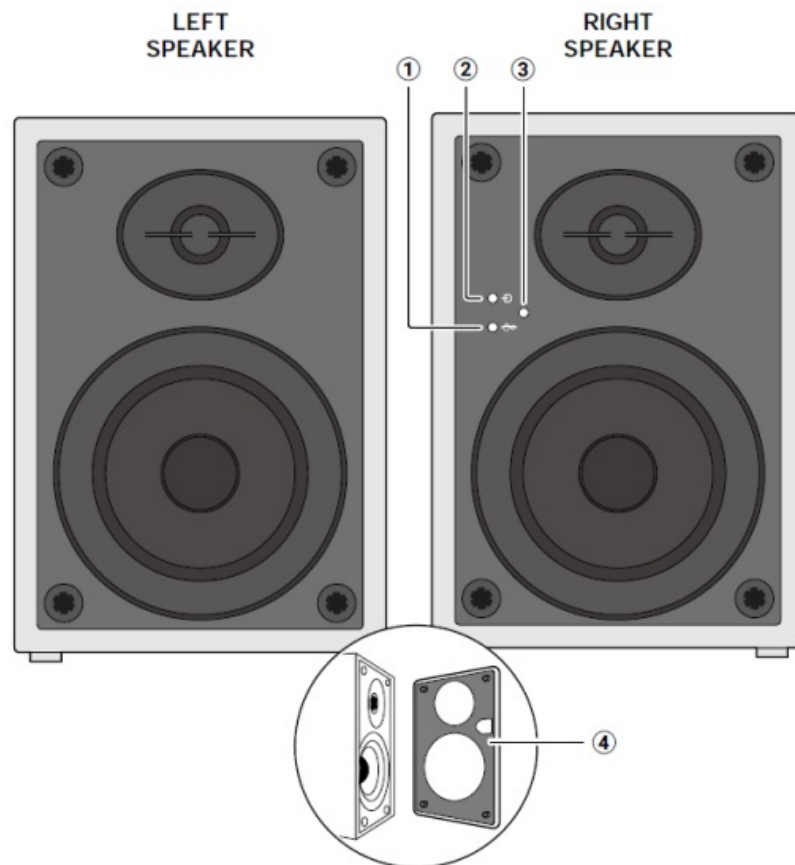


1. Speakers (2)
2. Speaker stands (2)
3. Speaker cable (1)
4. USB cable (1)
5. Remote controller (RC-992S) (1)
 - Batteries (AAA/R03) (2)
6. AC adapter and plug adapter

- Initial Setup Guide (1)
- Safety Information (1)
- Warranty: For North America (1) and Europe (1)

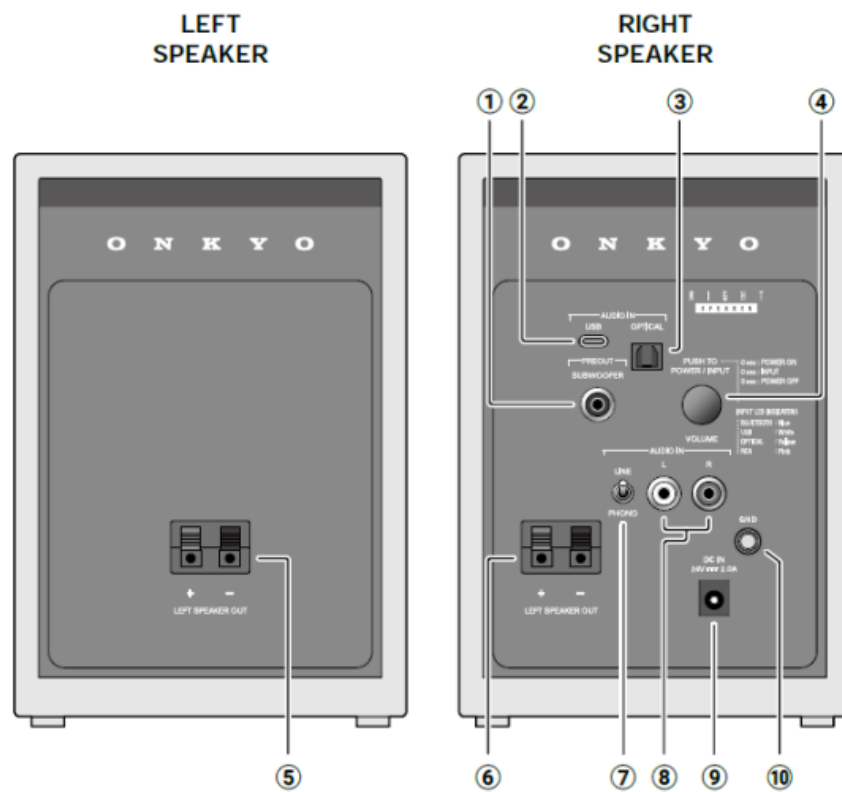
Part Names

Front Panel



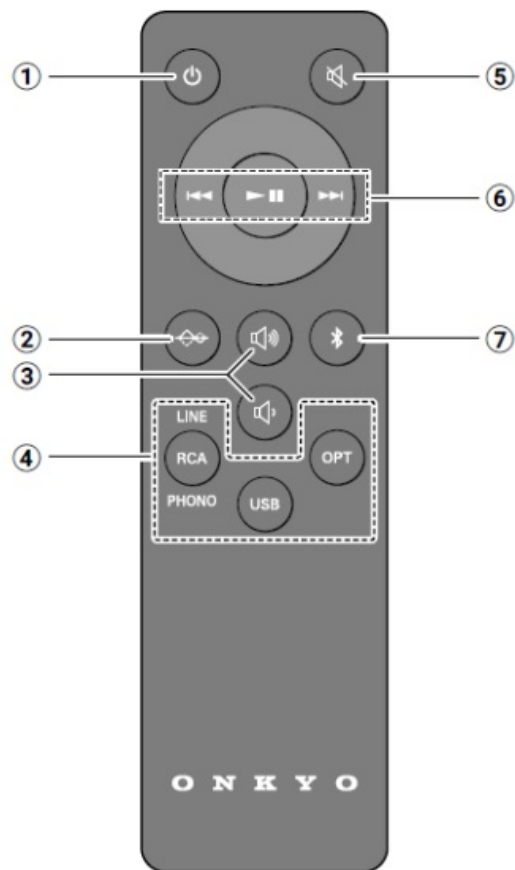
1. LED Flat sound mode Indicator
2. LED Source Indicator
3. Remote control sensor
4. Speaker grill

Rear Panel



1. PREOUT SUBWOOFER terminal
2. USB Type-C terminal
3. Optical digital input terminal
4. POWER/INPUT switch
- VOLUME dial
5. Speaker terminal(LEFT SPEAKER)
6. Speaker terminal(RIGHT SPEAKER)
7. LINE/PHONO selector switch
8. AUDIO IN LR terminals (RCA stereo terminals)
9. DC IN terminal
10. GND terminal

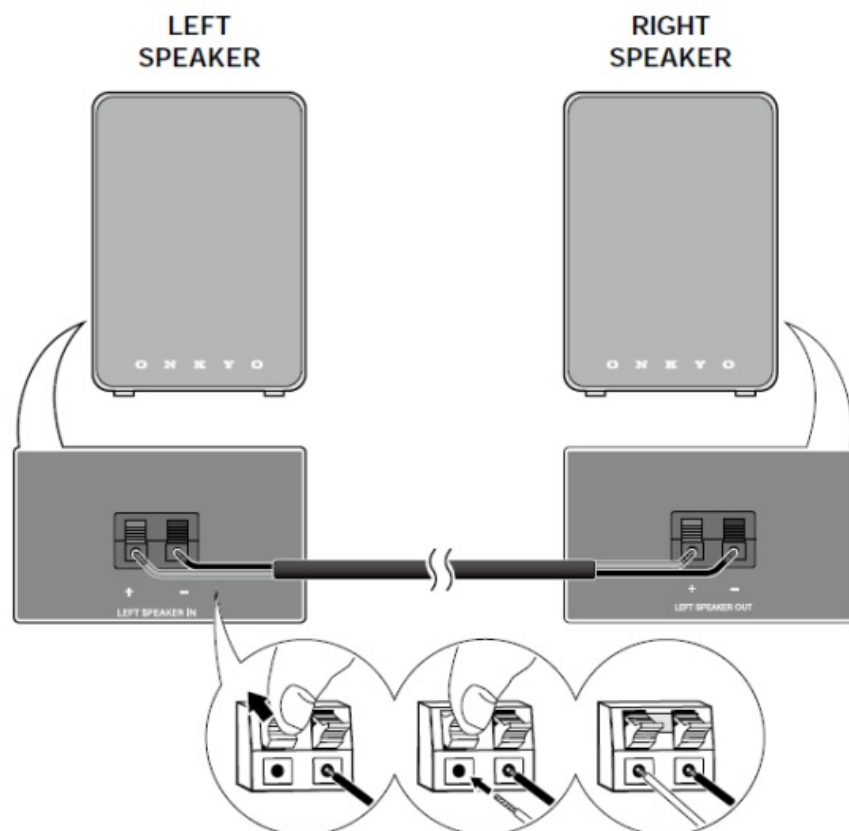
Remote Controller



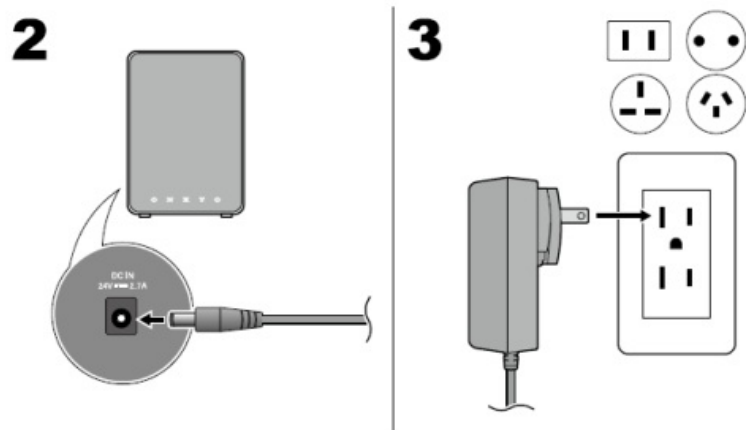
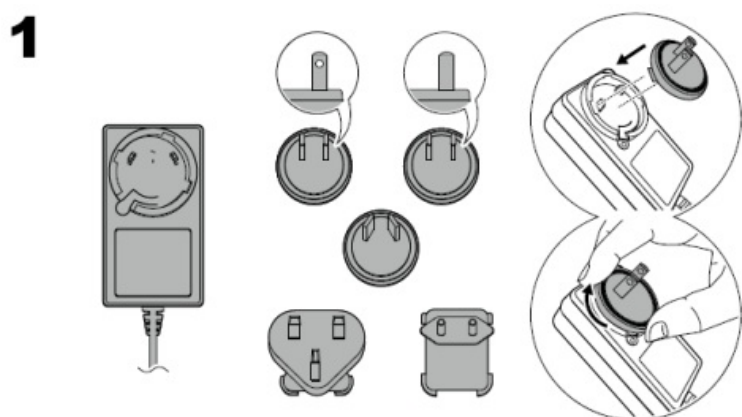
1. ON/STANDBY button
2. Flat sound mode button
3. Volume UP/DOWN buttons
4. Input selector buttons
5. Mute button
6. Play the operation buttons
7. BLUETOOTH® button

Setup

Connecting the speaker cable

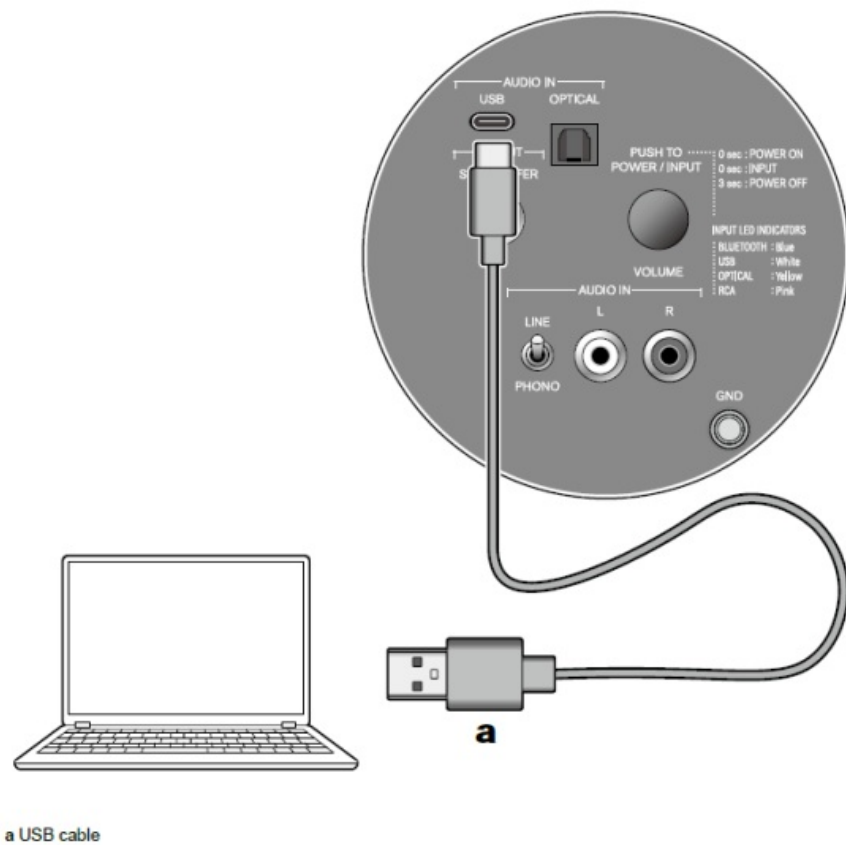


Assembling and connecting the AC adapter



Connections

Connecting a PC



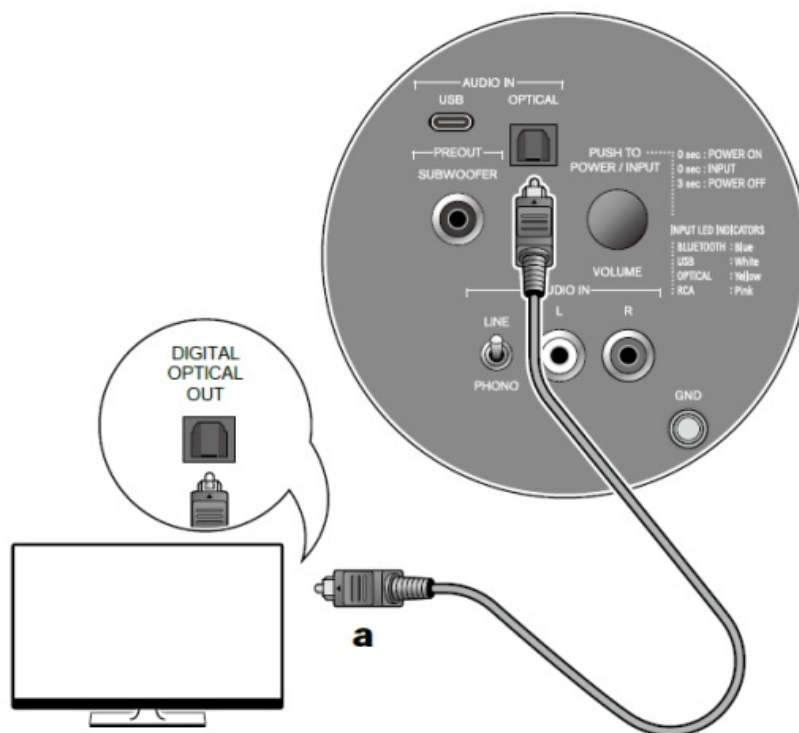
Connection location

- This unit: AUDIO IN USB terminal (USB Type-C terminal)

Tips

- Supported OS: Windows 10 or later

Connecting a TV



a Digital optical cable

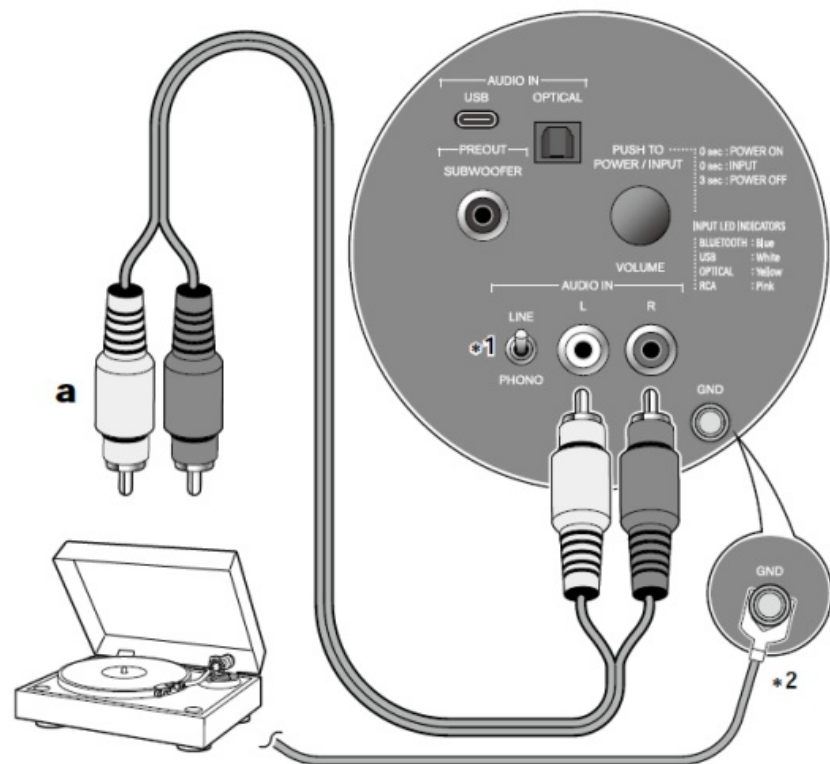
Connection location

- This unit: AUDIO IN OPTICAL terminal
- TV: Optical digital output terminal

Tips

- The AUDIO IN OPTICAL terminal of this unit supports 2-ch PCM signals only. Set the digital audio output setting of the TV to “PCM”.

Connecting a Turntable



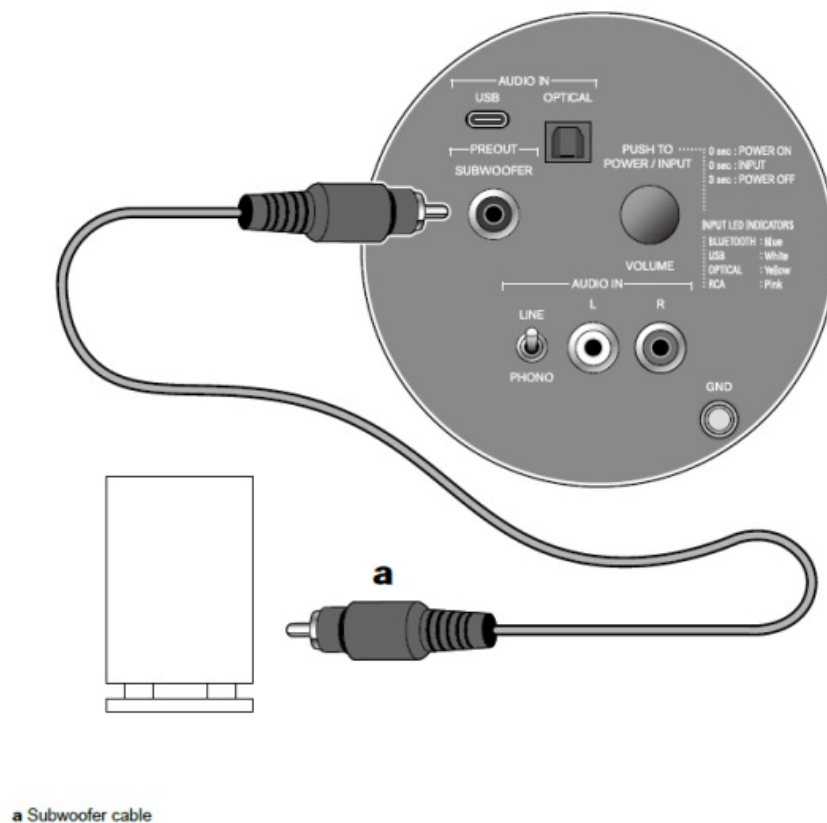
a Analog audio cable

Connection location

This unit: AUDIO IN LR terminals (RCA stereo terminals)

1. When connecting a turntable that does not have a built-in phono equalizer, set the LINE/PHONO selector switch to “PHONO”.
2. When the turntable has a ground wire, connect it to the GND terminal.

Connect the Subwoofer



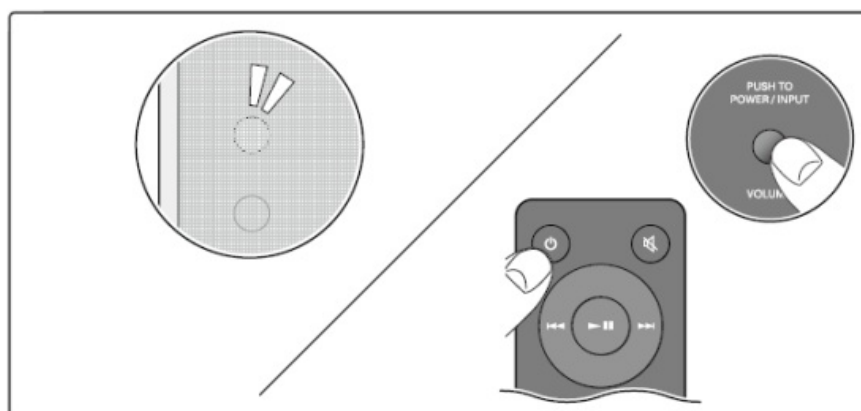
Connection location

- This unit: PREOUT SUBWOOFER terminal (RCA monaural terminal)

Playback

Basic Operations

On/Standby



When operating with the remote controller

- Press the ON/STANDBY button.

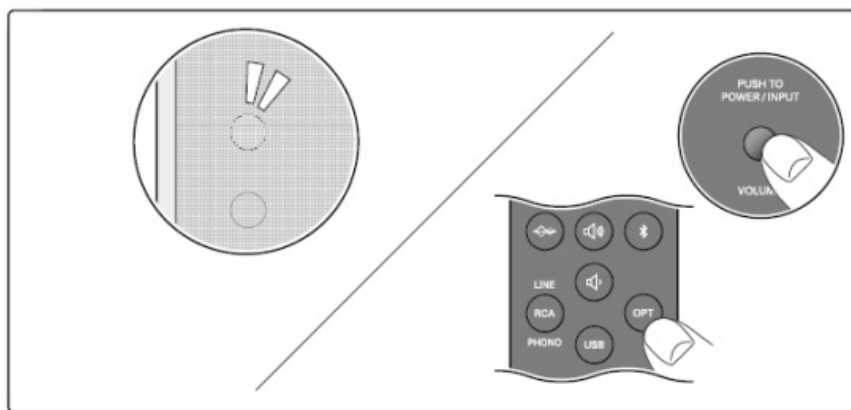
When operating with the main unit

- On: Press the POWER/INPUT switch.
- Standby: Press and hold the POWER/INPUT switch for three seconds.

Tips

When no signal is detected for 15 minutes or longer, the unit automatically enters the standby mode.

Switching the input source



When operating with the remote controller

- Press any of the input selector buttons.

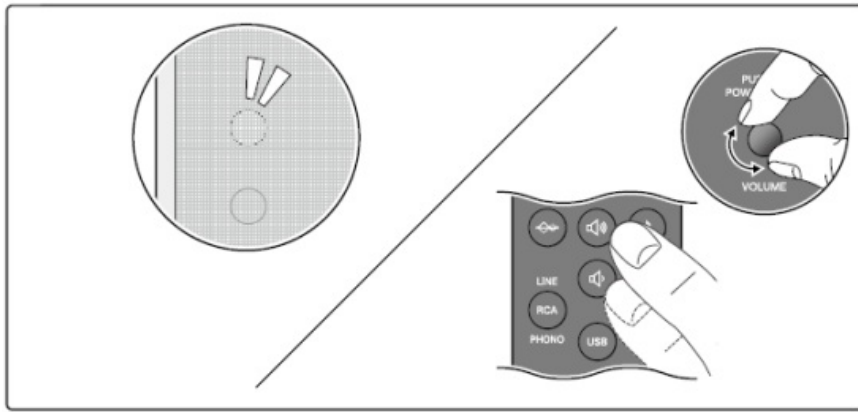
When operating with the main unit

- Press the POWER/INPUT switch repeatedly.

The color of the LED Source Indicator changes depending on the selected input source.

- BLUETOOTH: Blue
- USB: White
- OPTICAL: Yellow
- RCA: Pink

Adjusting the volume



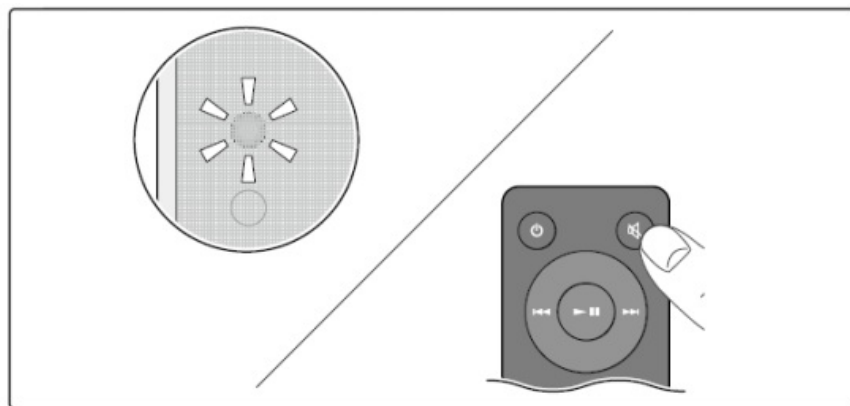
When operating with the remote controller

- Press the Volume UP/DOWN buttons.

When operating with the main unit

- Turn the VOLUME dial.

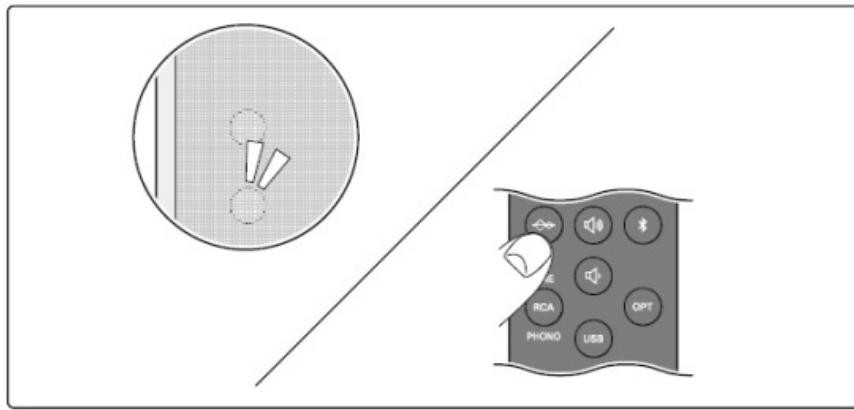
Mute



- Press the Mute button.
- In the mute state, the LED Source Indicator blinks red.

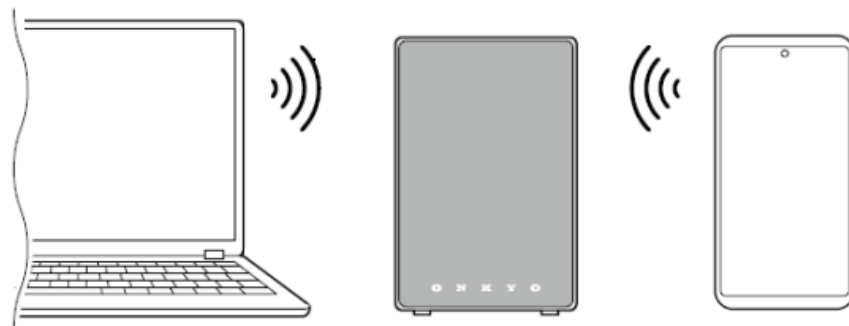
Advanced Operations

Setting the flat sound mode to On/Off



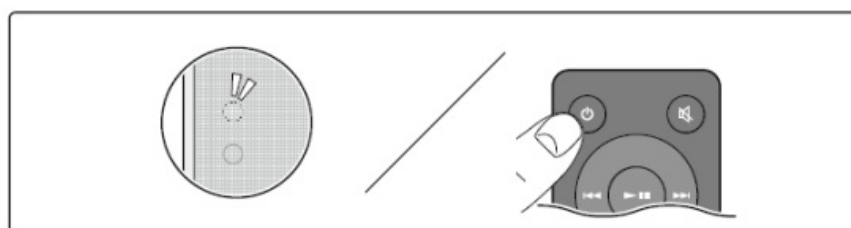
- Off (default): Bass and treble are enhanced to reproduce sound with inflection.
- On: Flat sound is reproduced without enhancing bass and treble.

BLUETOOTH® Playback



Pairing

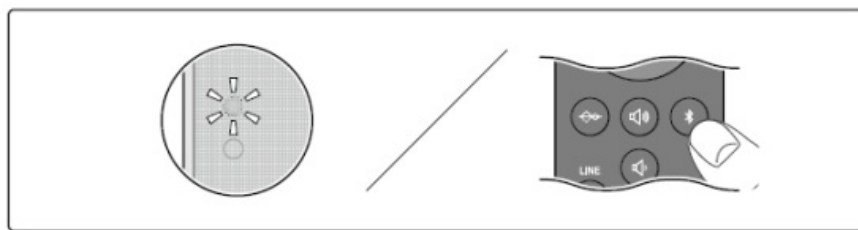
1. Press the ON/STANDBY button to turn on the unit.



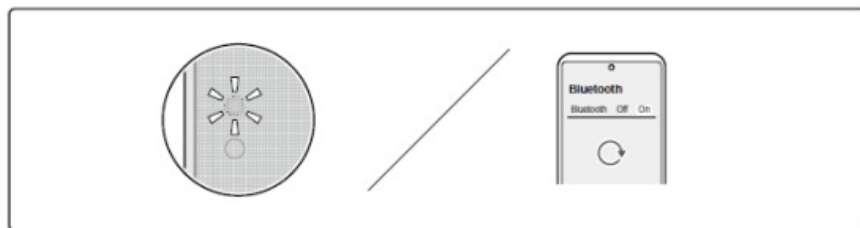
2. Press the BLUETOOTH button.

The LED Source Indicator blinks in blue, which shows the unit has entered the pairing standby mode.

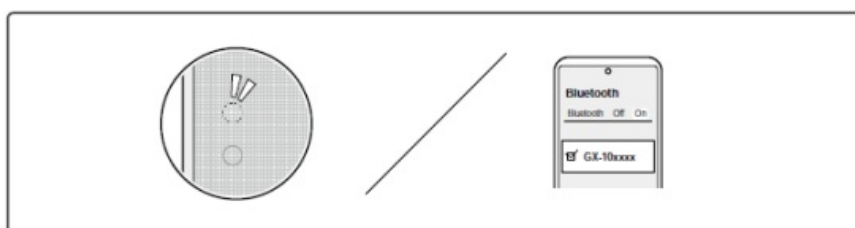
- When a BLUETOOTH-supported device has already been connected, cancel the connection, or press and hold the BLUETOOTH button of the remote controller for three seconds. Then the unit enters the pairing standby mode again.



3. Turn on the BLUETOOTH function of the BLUETOOTH-supported device.



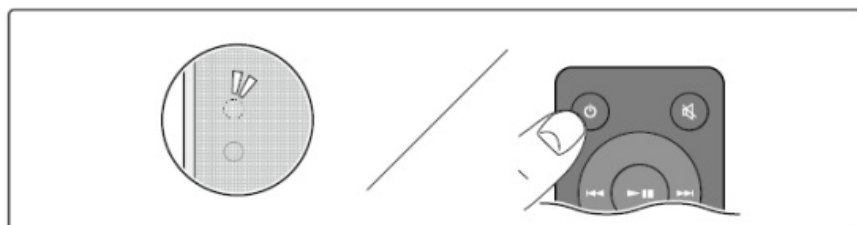
4. Operate the BLUETOOTH-supported device, and select this unit.



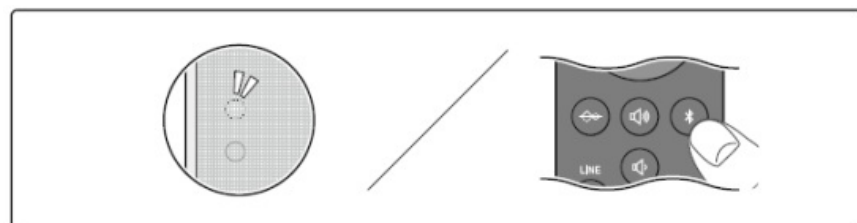
- When connecting multiple BLUETOOTH-supported devices, cancel the current connection, or press and hold the BLUETOOTH button of the remote controller for three seconds to let the unit enter the pairing standby mode. Then turn on the BLUETOOTH function of the next device.
- This unit can store the pairing information of up to 8 paired devices.

Playing Back

1. Press the ON/STANDBY button to turn on the unit.



2. Press the BLUETOOTH button.



3. Operate the BLUETOOTH-supported device and play music.

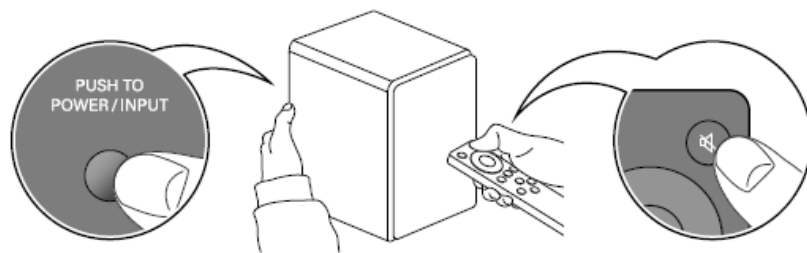
Tips

- The unit automatically turns on by operating the BLUETOOTH-supported device in standby mode to play music, -etc.
- When no signal is detected for 15 minutes or longer, the unit automatically enters the standby mode.

Troubleshooting

Resetting the unit

- Turn on the unit. While pressing down the POWER/INPUT switch on the rear panel, press and hold the Mute button on the remote controller.
- The LED Source Indicator turns off, and turns on again. Then the reset is complete.



Failure judgment: The LED Source Indicator lights up in red, and the unit does not turn on.

The protection circuit may be functioning.

According to the following procedure, restart the unit, and reconnect the cable.

1. Remove the AC adapter from the unit, and wait at least 10 minutes.
2. Remove the speaker cable connecting the right and left speakers, and reconnect it.
3. Reconnect the AC adapter.
4. Press the ON/STANDBY button, and check if the unit turns on.

When the unit does not turn on or the LED lights up in red again, the unit may be malfunctioning.

Failure judgment: No sound is reproduced from the right or left speaker.

- When the external device has been connected to this unit with an analog cable,

contact failure or disconnection of the cable may have occurred. Reconnect the cable or replace the cable with another one to see how it works.

- When the external device has been connected to this unit with a digital cable, check the audio output setting of the external device.

Failure judgment: Pairing with a BLUETOOTH-supported device cannot be established.

According to the following procedure, delete the information of the BLUETOOTH-supported device, and perform pairing again.

1. Turn on the unit, and press and hold the BLUETOOTH button on the remote controller at least 10 seconds.

Pressing and holding the button for 10 seconds or longer will delete the information of the Bluetooth-supported device stored in the unit.

2. Open the settings screen of the BLUETOOTH-supported device (smartphone, PC, etc.), and delete the information of this unit (device name) that has been registered.

*For more information, refer to the instruction manual of the BLUETOOTH-supported device.

Repairing

1. Turn on the unit, and press the BLUETOOTH button on the remote controller.
2. Confirm that the LED Source Indicator blinks in blue. Then, operate the BLUETOOTH-supported device, and perform pairing again.
3. When the pairing is successful and the LED Source Indicator lights up, play music, etc., to check if the sound is reproduced.

Failure judgment: No sound is reproduced from PC.

When the PC is connected using a USB cable

According to the following procedure, confirm the PC settings.

1. While this unit is connected, right-click the speaker symbol at the bottom right of the PC screen, and select "Sound settings".
2. Select "Output" – "Choose where to play sound" and set this unit.

If no sound is reproduced even after the setting is complete, or if this unit is not displayed on the setting screen, change the connection location of the USB terminal, and see how it works.

If no sound is reproduced even after the connection location is changed, the unit may be malfunctioning.

Failure judgment: No sound is reproduced from TV.

- Check if the digital audio output setting of the TV is set to “PCM”.
- This unit supports PCM signals. It does not support Dolby Digital or AAC.

General Specifications

- Type
 - RIGHT SPEAKER: 2-way bass reflex type with built-in amplifier, detachable speaker grill
 - LEFT SPEAKER: 2-way bass reflex type, detachable speaker grill
- Speakers used
 - Woofer 3inch(76.2 mm , Tweeter : 3/4inch (19 mm)
- Amplifier configurations: 2ch
- Power Output: 17W×2ch 100 Hz THD 1%
- Input terminals
- Analog
 - RCA stereo terminal(LINE/PHONO) ×1
- Digital
 - Optical digital terminal (PCM 2ch/32kHz, 44.1kHz, 48kHz) ×1
 - USB Type-C terminal ×1
- Output terminal: SUBWOOFER terminal
- Other terminals: Speaker terminal, GND terminal
- BLUETOOTH Section
- Communication system
 - BLUETOOTH Specification version 5.3 + dual mode
- Frequency band
 - 2.4GHz (2.402-2.480GHz)
- Modulation method

- FHSS (Frequency Hopping Spread Spectrum)
- Compatible BLUETOOTH profiles
 - A2DP 1.3.2, AVRCP 1.6.2, HFP1.8, HSP 1.2, SPP 1.2
- Supported Codecs
 - SBC
- Transmission range (A2DP)
 - 20 Hz – 20 kHz (Sampling frequency 44.1 kHz)
- Maximum communication range
 - Line of sight approx. 15 m(*)
- (*)The actual range will vary depending on factors such as obstacles between devices, magnetic fields around a microwave oven, static electricity, cordless phone, reception sensitivity, antenna's performance, operating system, software application, etc.
- Maximum radio-frequency power transmitted in the frequency band(s)
 - 2400 MHz – 2483.5 MHz (20 dBm (e.i.r.p))
- USB Section: USB Ver.2.0, Type-C

General

- Power Supply
 - AC 100 – 240 V, 50/60 Hz
- Power Consumption
 - 10 W
- Standby mode
 - BLUETOOTH: 0.3 W
 - USB: 0.3 W
 - OPTICAL: 0.3 W
 - RCA: 0.3 W
- In this mode, when there is no signal output, the idle power consumption is 0.3 W after 15 minutes.
- Dimensions (W × H × D)
 - RIGHT SPEAKER: 119 mm × 176 mm × 169 mm (including speaker grilles and protrusions on the back)
 - LEFT SPEAKER: 119 mm × 176 mm × 163 mm (including speaker grilles and

protrusions on the back)

- **Weight**
 - RIGHT SPEAKER: 1.8 kg (including speaker grill)
 - LEFT SPEAKER: 1.6 kg (including speaker grill)

License and Trademark



The BLUETOOTH® word mark and logos are registered trademarks owned by BLUETOOTH SIG, Inc.

All other trademarks are the property of their respective owners.

SN 29404186A_EN


© Copyright 2025 Premium Audio Company Technology Center K.K. All rights reserved.

© Copyright 2025 Premium Audio Company Technology Center K.K. Tous droits de reproduction et de traduction réservés. O2503-1

FAQ



- **Q: What should I do if there is no sound coming from the speakers?**
 - **A:** Check all connections and ensure that the volume is not muted. Try adjusting volume levels on both the unit and external devices.
- **Q: Can I use this speaker with a smartphone?**
 - **A:** Yes, you can connect your smartphone via Bluetooth by following the pairing instructions provided in the manual.
- **Q: How do I reset the unit to factory settings?**
 - **A:** Refer to the user manual for specific instructions on resetting the unit to factory settings, usually found in the Troubleshooting section.

Documents / Resources

 The image shows the front cover of the Onkyo GX-10DB Powered Speaker instruction manual. It features the Onkyo logo at the top, followed by the text 'CREATOR SERIES'. Below that is a small illustration of the speaker. At the bottom, there are several small icons representing different features or functions of the speaker.	<p>ONKYO GX-10DB Powered Speaker [pdf] Instruction Manual</p> <p>GX-10DB, GX-10DB Powered Speaker, Powered Speaker, Speaker</p>
--	---

References

- [User Manual](#)

  GX-10DB, GX-10DB Powered Speaker, ONKYO, Powered Speaker, speaker

Leave a comment

Your email address will not be published. Required fields are marked *

Comment *

Name

Email

Website

☐ Save my name, email, and website in this browser for the next time I comment.

Post Comment

Search:

e.g. whirlpool wrf535swhz

Search

[Manuals+](#) | [Upload](#) | [Deep Search](#) | [Privacy Policy](#) | [@manuals.plus](#) | [YouTube](#)

This website is an independent publication and is neither affiliated with nor endorsed by any of the trademark owners. The "Bluetooth®" word mark and logos are registered trademarks owned by Bluetooth SIG, Inc. The "Wi-Fi®" word mark and logos are registered trademarks owned by the Wi-Fi Alliance. Any use of these marks on this website does not imply any affiliation with or endorsement.