

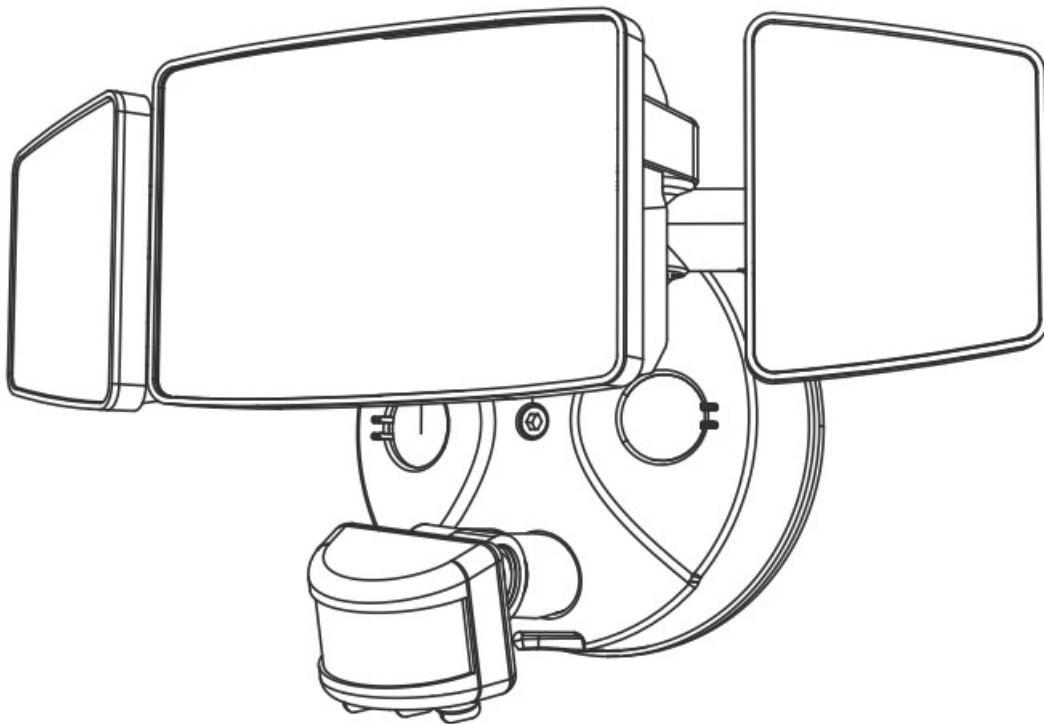


## ONFORU BDD100G-3 Pir LED Wall Lights with Motion Sensor User Guide

[Home](#) » [ONFORU](#) » ONFORU BDD100G-3 Pir LED Wall Lights with Motion Sensor User Guide 



### BDD100G-3 Pir LED Wall Lights with Motion Sensor User Guide



**MODEL:**  
BDB55G-3 BDI45G-2  
BDC80G-3 BDD100G-3

## Contents

### 1 COMPONENTS AND STRUCTURE

### 2 PARTS LIST

### 3 SPECIFICATIONS

### 4 Operation Instructions

### 5 PREPARATION

### 6 PREPARATION

### 7 INSTALLATION STEPS

### 8 Troubleshooting

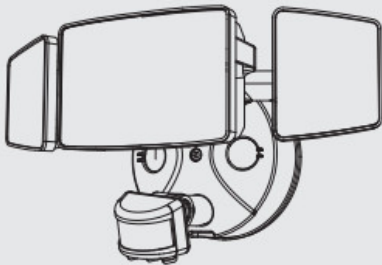
### 9 Documents / Resources

#### 9.1 References

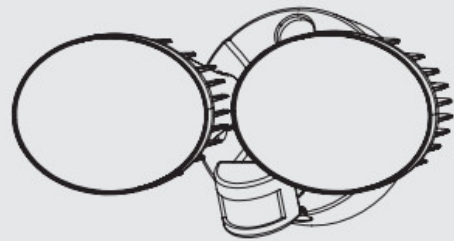
### 10 Related Posts

## COMPONENTS AND STRUCTURE

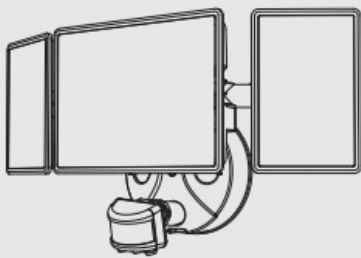
**BDB55G-3**



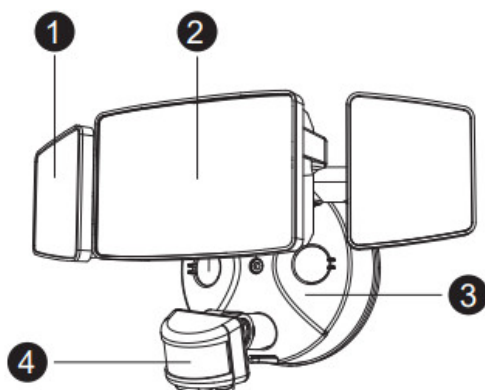
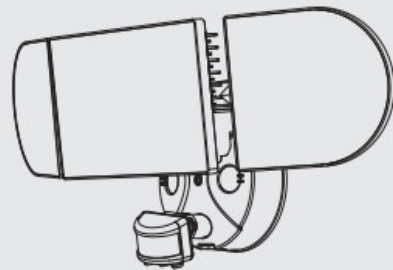
**BDI45G-2**



**BDC80G-3**



**BDD100G-3**



1. Cover
2. LED Light Source
3. Lamp Bracket
4. Sensor Head

## PARTS LIST



**A** Machine Screw  
QTY: 3



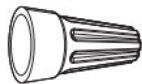
**B** Expansion Rubber Plug  
QTY: 3



**C** EVA Gasket  
QTY: 1



**D** Mounting Bracket  
QTY: 1



**E** Wire Nuts  
QTY: 3



**F** Long Machine Screw  
QTY: 1



**G** Silicone Gasket  
QTY: 1



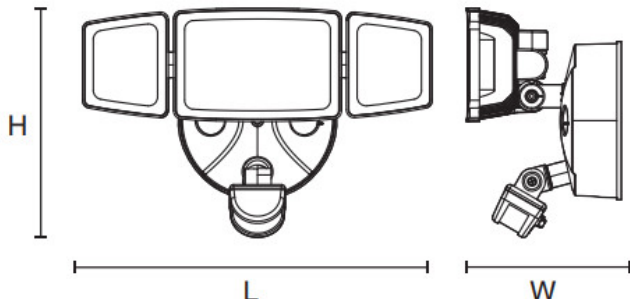
**H** Machine Screw  
QTY: 2



**I** Machine Screw  
QTY: 2

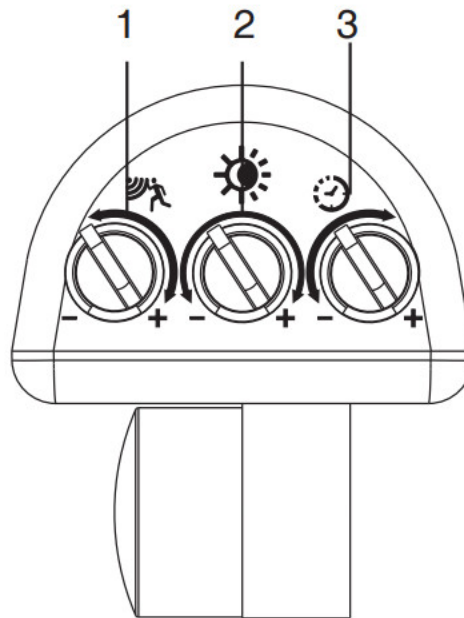
## SPECIFICATIONS

| LED WALL LAMP          |                                   |          |                                  |           |
|------------------------|-----------------------------------|----------|----------------------------------|-----------|
| Model                  | BDB55G-3                          | BDI45G-2 | BDC80G-3                         | BDD100G-3 |
| Input Current          | 0.5A                              | 0.38A    | 0.58A                            | 0.83A     |
| Rated Power            | 55W                               | 45W      | 70W                              | 100W      |
| Luminous Flux          | 5500lm                            | 4000lm   | 6200lm                           | 9000lm    |
| Input Voltage          | 100-120V – 60Hz                   |          |                                  |           |
| CCT                    | 6500K                             |          |                                  |           |
| CRI                    | X80                               |          |                                  |           |
| Power Factor           | ≥0.9                              |          |                                  |           |
| L70B50 lifetime        | 30000hours L70350 @25°            |          |                                  |           |
| Beam Angle             | 120°                              |          |                                  |           |
| fa                     | -20-40°C/-4°F-104°F               |          |                                  |           |
| Luminaire Location     | SUITABLE FOR WET LOCATIONS        |          |                                  |           |
| DIMENSIONS             |                                   |          |                                  |           |
| Model                  | BDB55G-3                          |          | BDI45G-2                         |           |
| Dimensions (LxHxW)     | 272x123x121mm /10.71×4.84×4.76 in |          | 256x140x145 mm /10.08×5.5×5.7 in |           |
| Weight                 | 0.98 kg / 2.16 lb                 |          | 0.98 kg / 2.16 lb                |           |
| Max Projected Area     | 0.0214m2 / 0.23ft2                |          | 0.286m2 / 0.307ft2               |           |
| Max. Lighting Coverage | 90m2 / 968ft2                     |          | 70m2 / 753ft2                    |           |

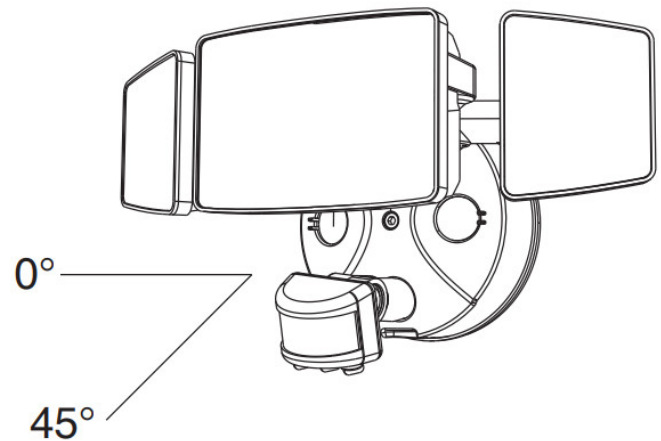
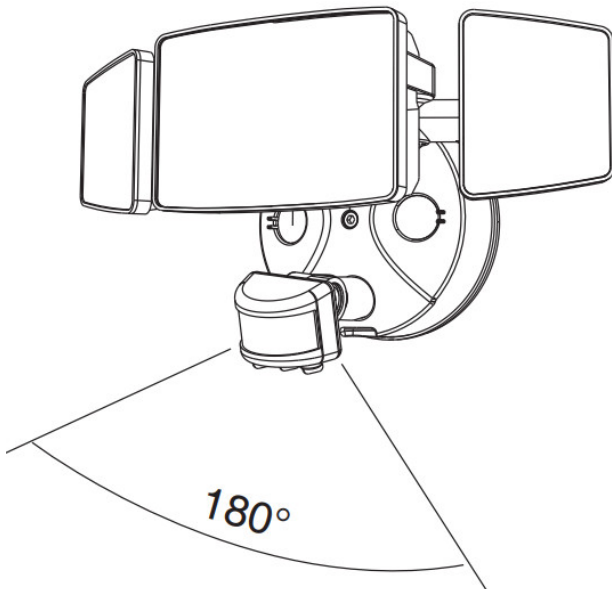
| DIMENSIONS  |                   |                   |
|---|-------------------|-------------------|
| Model   | BDC80G-3          | BDD100G-3         |
|   | 365x195x118 mm /  | 455x182x120 mm /  |
| Dimensions (LxHxW)  | 14.4×7.67×4.64in  | 17.9×7.16×4.72 in |
| Weight  | 1.28kg / 2.821b   | 1.53kg / 3.37lb   |
| Max Projected Area  | 0.044m2 / 0.47ft2 | 0.049m2 / 0.52ft2 |
| Max. Lighting Coverage  | 115m2/ 1237ft2    | 160m2/ 1722ft2    |
| <div><div><div><div><div><div></div><div><b>Note:</b></div></div><div>The testing standard of the product's</div><div>luminous flux:Place the three/two lights</div><div>on the same horizontal surface for</div><div>testing, and the tested luminous flux</div><div>is the accurate luminous flux.</div></div></div><div></div></div></div> |                   |                   |

## Operation Instructions

1. SENS adjustable: It can be adjusted according to using location; low sensitivity with 5m for detection distance; high sensitivity with 10m, it fits for a large room.
2. Can identify day and night: The consumer can adjust work ambient light. It can work in the daytime and at night when it is adjusted on the “+” position (max). It can work in the ambient light less than 10LUX when it is adjusted on the “-” position (min).
3. Time-delay adjustment: It can be set according to the consumer’s desire. The minimum time is 10sec±3sec. The maximum is 7min±2min. Time delay is added continually: When it receives the second induction signals after the first induction, it will compute time once more on the rest of the first time-delay basic (set time).



**Detection Range: 180°**



**NOTE:**

1. The PIR sensor shall always be tilted slightly downward.
2. The orientation angle of the sensor shall be between 0-45°.
3. The detection distance of the sensor is the farthest when the ambient temperature is 25 °C .  
Any temperature fluctuations above or below 25 will affect the detection distance.
4. If the light continues to detect motion while it is on, it will remain on until the motion stops.

**PREPARATION**

**NOTE:**

Before beginning the assembly of the product, make sure all parts are present. Compare parts with parts list. If any part is missing or damaged, do not attempt to assemble the product.

Estimated Assembly Time:30-60 minutes.

Recommended to be installed on the ground above 2.5m (8.2 ft) and no higher than 5 m (16.4 ft).

Product appearance may vary from the image shown.

## TOOLS REQUIRED not included



Flathead  
screwdriver



screwdriver



Silicone Sealant



Eye Protection



Pliers



Step Ladder

### **WARNING:**

THIS PRODUCT MUST BE INSTALLED IN ACCORDANCE WITH THE APPLICABLE INSTALLATION CODE BY A PERSON FAMILIAR WITH THE CONSTRUCTION AND OPERATION OF THE PRODUCT AND THE HAZARDS INVOLVED.

### **CAUTION:**

PLEASE MAKE SURE YOUR WALL SWITCH AND POWER AT THE MAIN CIRCUIT BREAKER BOTH ARE OFF. IF IN DOUBT ABOUT ELECTRICAL INSTALLATION, CONSULT A LICENSED ELECTRICIAN.

## **PREPARATION**

### **RISK OF SHOCK:**

BEFORE BEGINNING INSTALLATION, TURN OFF ELECTRICITY AT THE CIRCUIT BREAKER BOX OR THE MAIN FUSE BOX.

### **NOTE:**

BE SURE TO USE WIRE NUTS/CONNECTORS RATED FOR THE CORRECT GAUGE AND NUMBER OF WIRES USED.

MAKE SURE THERE ARE NO EXPOSED WIRE BUNDLES OUTSIDE THE WIRE NUT/CONNECTOR (IF APPLICABLE).

BE CAREFUL NOT TO DAMAGE OR CUT THE WIRE INSULATION (COVERING) DURING INSTALLATION. DO NOT LET THE WIRES TOUCH ANY SHARP EDGES.

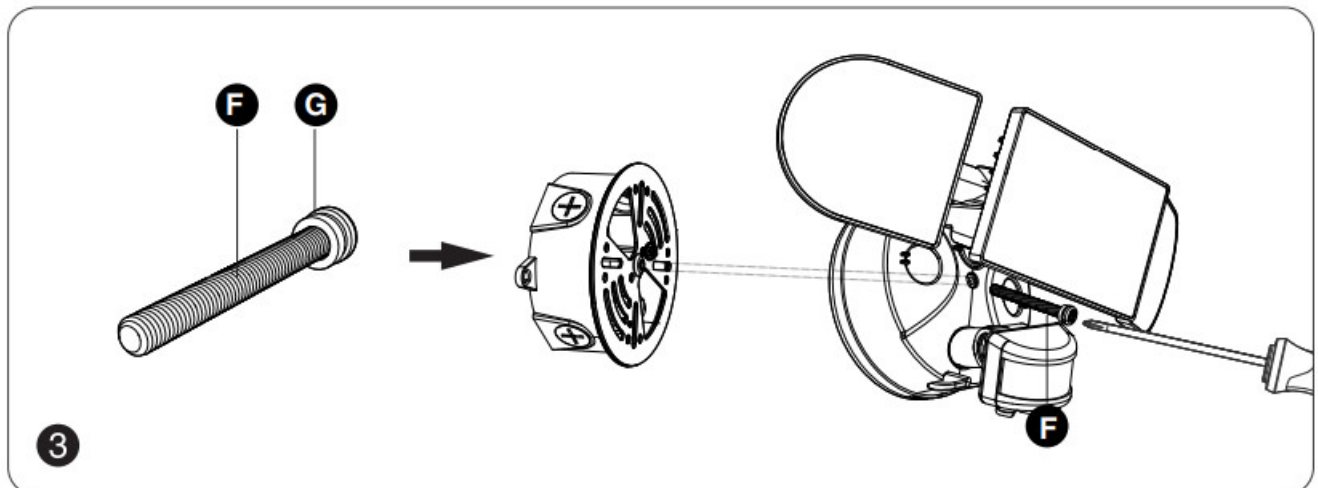
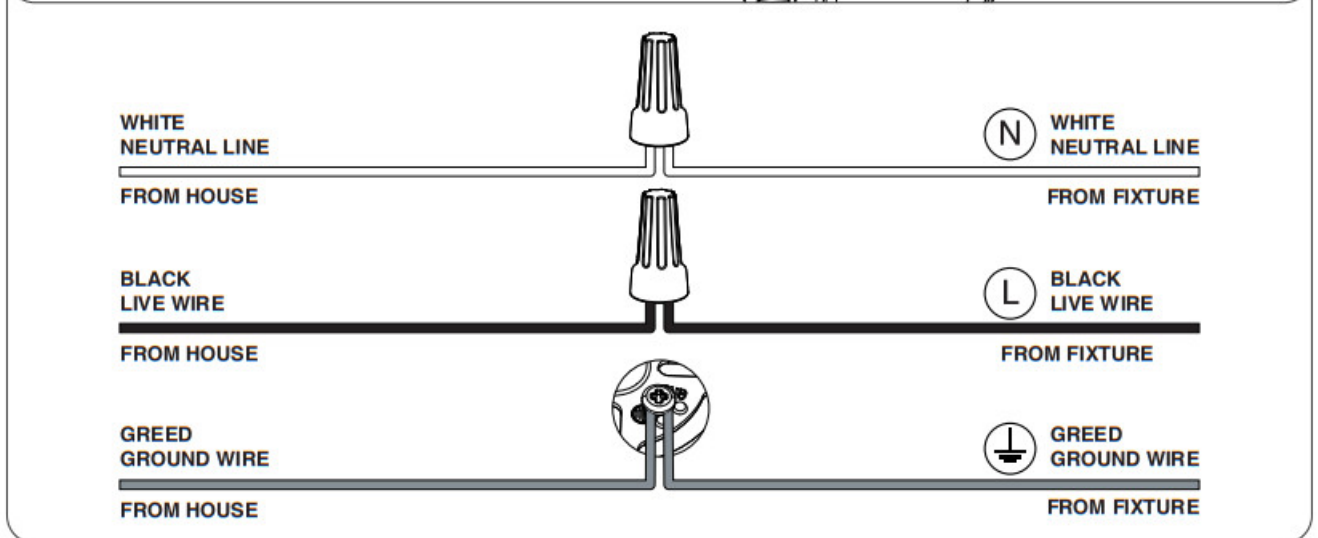
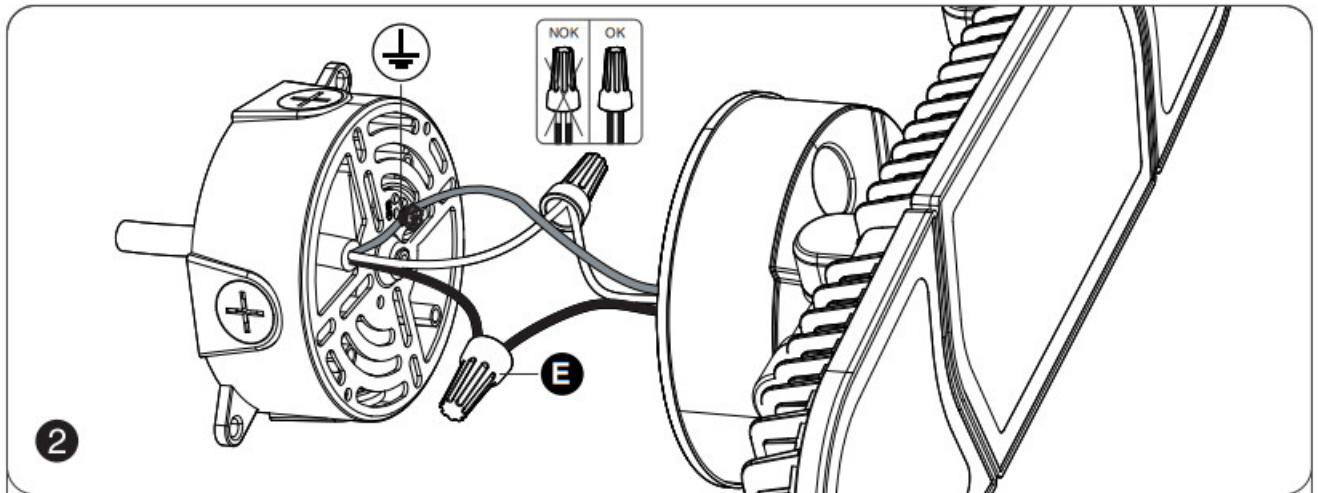
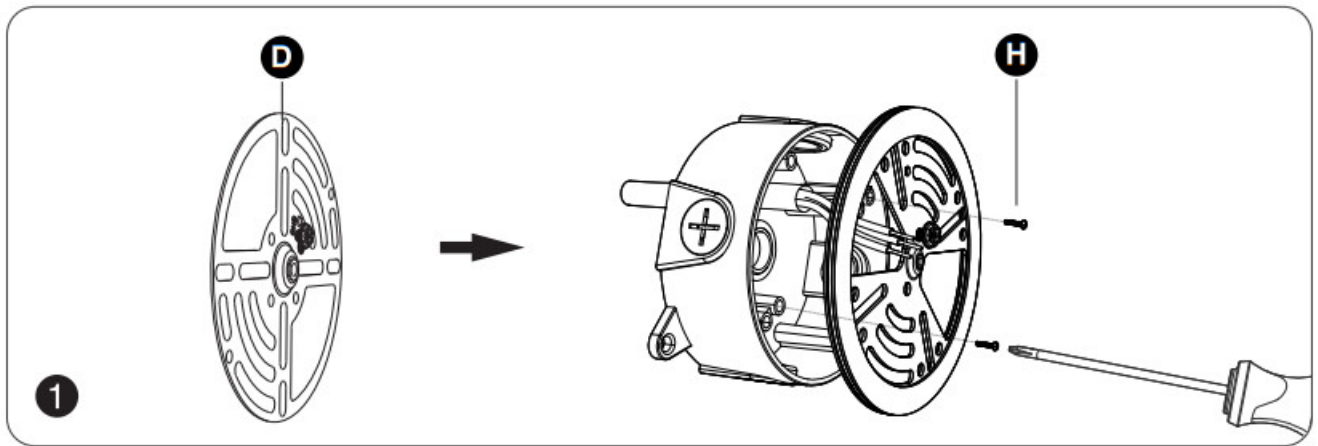
### **WARNING:**

DO NOT CONNECT THIS LIGHT FIXTURE TO AN UNGROUNDED ELECTRICAL SYSTEM. ATTACH GROUND FIXTURE WIRE TO EITHER GREEN GROUND SCREW ON THE MOUNTING PLATE OR THE GROUND WIRE IN THE OUTLET BOX.

INSTALLING THIS LIGHT IN AN UNGROUNDED ELECTRICAL SYSTEM MAY CAUSE THE METAL PARTS OF THE LIGHT TO CARRY CURRENT IF ANY WIRES OR WIRE CONNECTIONS ARE DAMAGED OR LOOSE. IN THIS CASE, ANYONE WHO TOUCHES THE LIGHT WILL RECEIVE AN ELECTRIC SHOCK, RESULTING IN INJURY OR DEATH.

## **INSTALLATION STEPS**

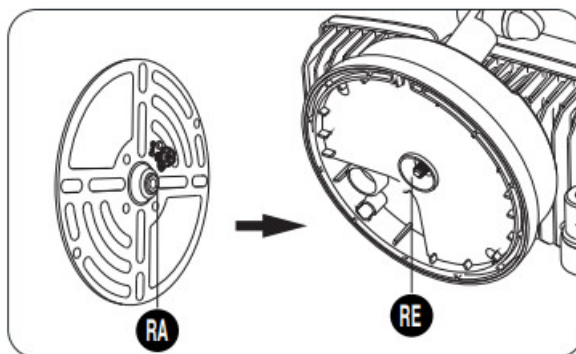
FOR WET LOCATION, MAKE SURE TO FILL FULL THE GAP OF THE EVA GASKET AND MOUNTING SURFACE WITH SEALING COMPOUND OR SILICON GLUE.





**Note**

The raised part (RA) of the metal plate must be engaged with the recessed part (RE) of the base, otherwise, it cannot be installed.

**Troubleshooting**

| Malfunction  | Cause  | Remedy  |
|--|--|---|
| LED senses a movement, the light does not light up     | <ol style="list-style-type: none"> <li>1. The light is not energized</li> <li>2. Other surrounding light sources make the light misjudge it as daytime</li> <li>3. During the day, the brightness is in night mode</li> <li>4. Internal wiring is loose</li> </ol> | <ol style="list-style-type: none"> <li>1. Check power-on status</li> <li>2. Turn off the nearby lights or sensor head to other directions</li> <li>3. Reset</li> <li>4. Rewiring after power failure</li> </ol> |
| LED sensor light did not go out, continued to light up | Continuous movement within the sensing range   | Check the relevant area and retune or override the sensor head if necessary   |
| LED sensor light illuminates during the day            | The shadows around the sensor make it mistakenly think it's night  | <ol style="list-style-type: none"> <li>1. Do not cover the sensor head</li> <li>2. Place the light in a place where the light is bright enough during the day</li> </ol>  |
| LED sensor light flashing                              | Surrounded by other unstable light sources shining onto the induction  | Avoid being exposed to such light sources   |
| LED lights turn on unexpectedly                        | <ol style="list-style-type: none"> <li>1. Wind blows the branches and bushes within the sensing range</li> <li>2. Sensing cars on the road</li> <li>3. Sudden temperature change due to climate factors or fans, exhaust from open windows</li> </ol>              | <ol style="list-style-type: none"> <li>1. Adjust its scope</li> <li>2. Adjust its scope</li> <li>3. Change irradiation area</li> </ol>  |

**Manufacturer**

Address: qian wan yi lu 1 hao A dong 201 shi qian hai shen gang he zuo qu Shen Zhen, Guangdong, 518000, CN

[support@onforuled.com](mailto:support@onforuled.com) [www.onforuleds.com](http://www.onforuleds.com)



MDH LIGHTING LTD

Suite 302, 292 Strovolos Avenue, 2048 Strovolos  
Nicosia, Cyprus | [support@onforuled.com](mailto:support@onforuled.com)



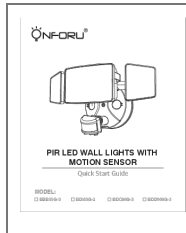
MDH LIGHTING LTD

69 Aberdeen Avenue, Cambridge CB2 8DL,  
United Kingdom | [support@onforuled.com](mailto:support@onforuled.com)

Made in China



## Documents / Resources



[ONFORU BDD100G-3 Pir LED Wall Lights with Motion Sensor](#) [pdf] User Guide  
BDB55G-3, BDI45G-2, BDC80G-3, BDD100G-3 Pir LED Wall Lights with Motion Sensor, BDD100G-3, Pir LED Wall Lights with Motion Sensor

## References

- 💡 [Onforu LED Light - Colorful LED Lights Make Your Life More Colorful](#)

[Manuals+](#)