

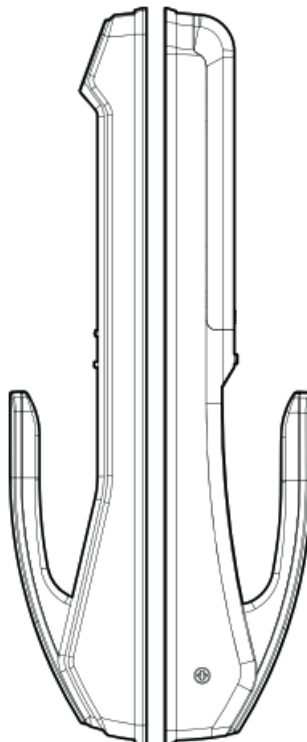


Onface 2AW4P-D5 FACE RECOGNITION DOORLOCK User Manual

[Home](#) » [Onface](#) » Onface 2AW4P-D5 FACE RECOGNITION DOORLOCK User Manual 




D5 FACE RECOGNITION DOOR LOCK User Manual

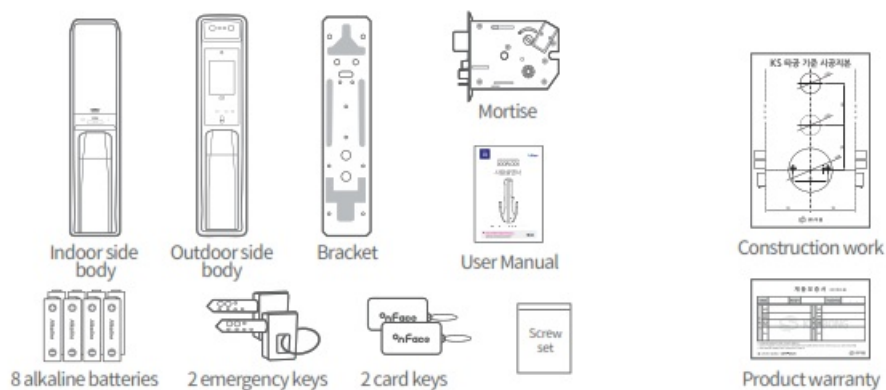




Users need to be familiar with the emergency switchgear.

-  In order to use this product safely and appropriately, please read carefully the safety precautions before use.

Components For distribution



Contents

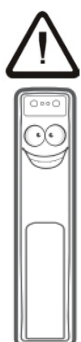
- 1 Safety Precautions
- 2 Part names and specifications
- 3 Product specifications
- 4 Screen Layout
- 5 Initial setting
- 6 User Manual
- 7 Product warranty
- 8 Documents / Resources
- 9 Related Posts



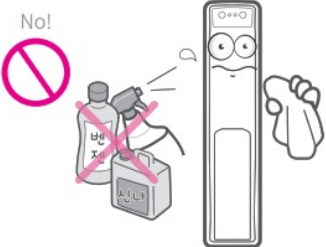
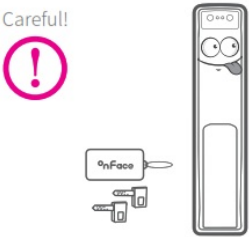
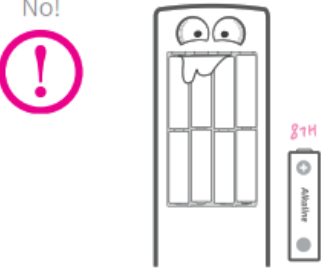
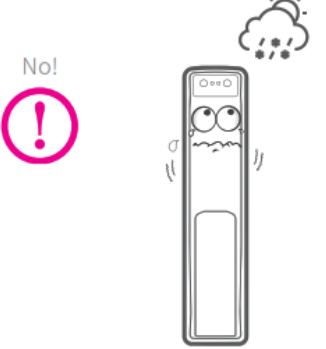

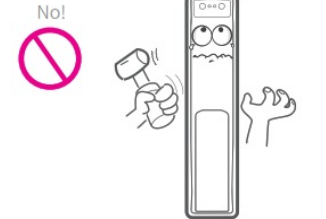
Safety Precautions












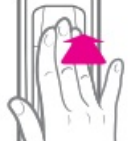

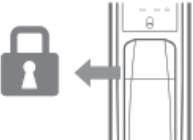

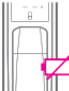


Please read the following carefully for proper use of the product.
Failure to follow instructions may result in injury or property damage



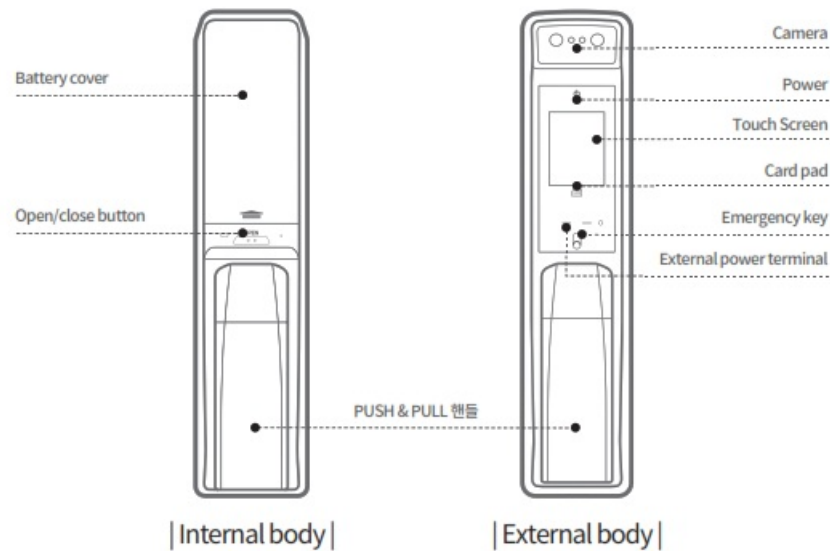
ON FACE D5 face recognition door lock is a high-technology product of which its use is complex. Therefore, please install it after all the furnishing work is complete. 'Please consult a specialist or the dealer you purchased the product from.

<p>No!</p> 	<p>Be careful not to let the product wet. Wipe the product with a dry cloth for cleaning. ect product performance.</p>
<p>Careful!</p> 	<p>Be careful not to lose the card key or the emergency key and also not to crash them or is properly locked when you exit.</p>
<p>No!</p> 	<p>Replace batteries with the same brand's 1.5V alkaline batteries. When using old an- ries. It may cause product malfunction.</p>
<p>No!</p> 	<p>Do not expose the product in direct sunlight, high temperature, rain, or snow. It may</p>
<p>Careful!</p> 	<p>Be sure to set the settings such as face recognition registration, card key deletion, r</p>
<p>No!</p> 	<p>Do not put unnecessary pressure on the door lock. Also, do not arbitrarily disassem- bles due to careless use even during the free-of-charge A/S period.</p>

 Face recognition 	Up to 100 people can be registered with face and palm registration. (recognition speed is fast.)
 Day & Night 	Recognition is feasible in dark environments due to infrared cameras.
 Tempering, theft prevention 	Biometric technology that prevents opening by phone images or videos.
 Durable against electric shock 	Passed testing for fundamental electric shocks and electrostatic immunity, Durability
 Intrusion alarm 	a safety system that generates alarm sounds Easy push-pull handles with the SAFE
 Push-Pull handle 	Easy push-pull handles with the SAFETY PANIC feature for interior uses.
 Automatic lock rewind 	The door lock automatically locks if the door is not closed within 3 or 5 seconds after
 Low battery sign  Replace the batteries	The door lock informs when to change the batteries.

Part names and specifications

names



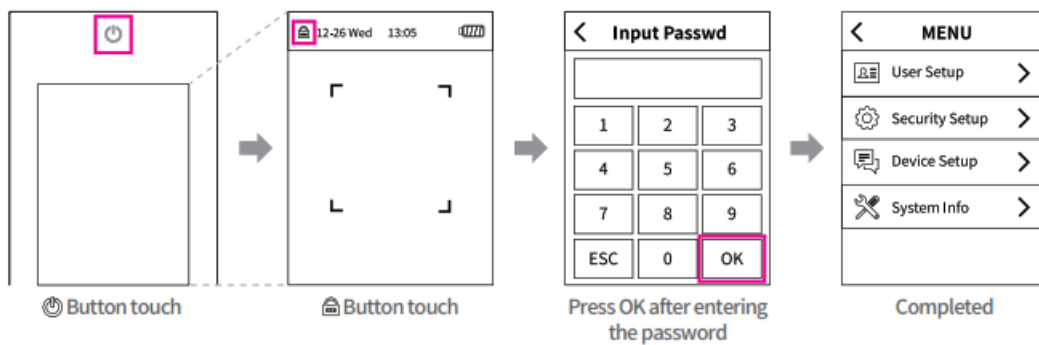
Product specifications

Power	DC 6V (Alkaline battery 1.5V/ 8EA/ AA size)
Opening Method	Face, card key, palm, password
Registrations	RF card : 100EA/ face recog : 100EA/ palm recog: 100EA
Screen	LCD with touch
Camera	1x visible light camera, 1x infrared detection camera
Face Recognition	Recognition time: 0.3 SEC
	Support mode: 1:N & 1:1
User Language	English, Japanese
Temperature	-10°C -60°C
Size	External body: 85(W)x367(H)x73(D)mm / Internal body :84(W)x363.5(H)x69(D)mm
Components	Zinc, Aluminum die casting, ABS, PC

Product Specifications

Screen Layout

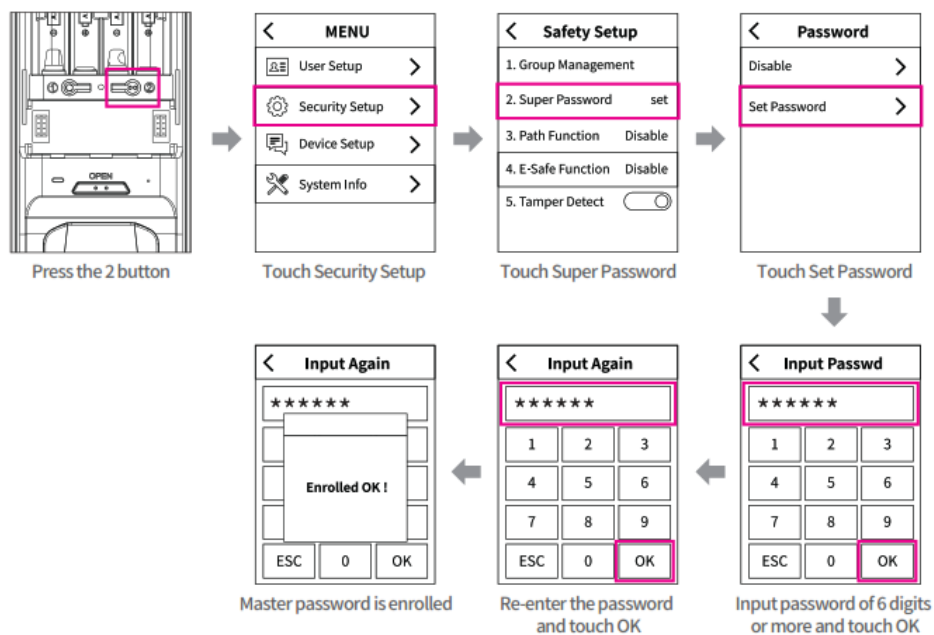
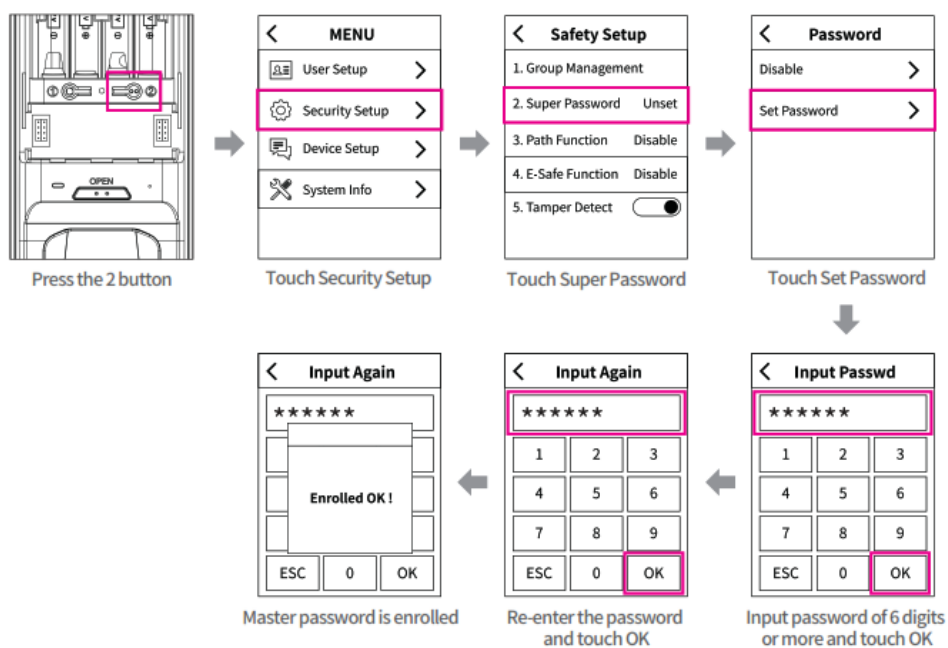
The screen configuration consists of user, security, environment settings, and product information. Touch the according to move to that menu.



Initial setting

1. Set the master password

Follow the steps to set the master password.



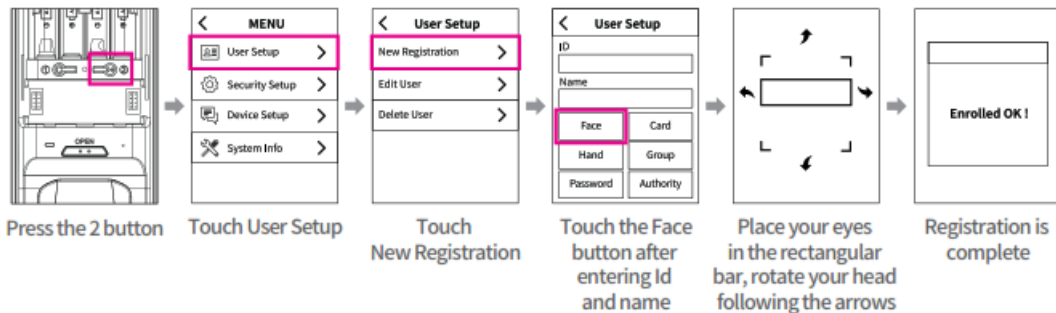


& Register face recognition with the door open. Caudal

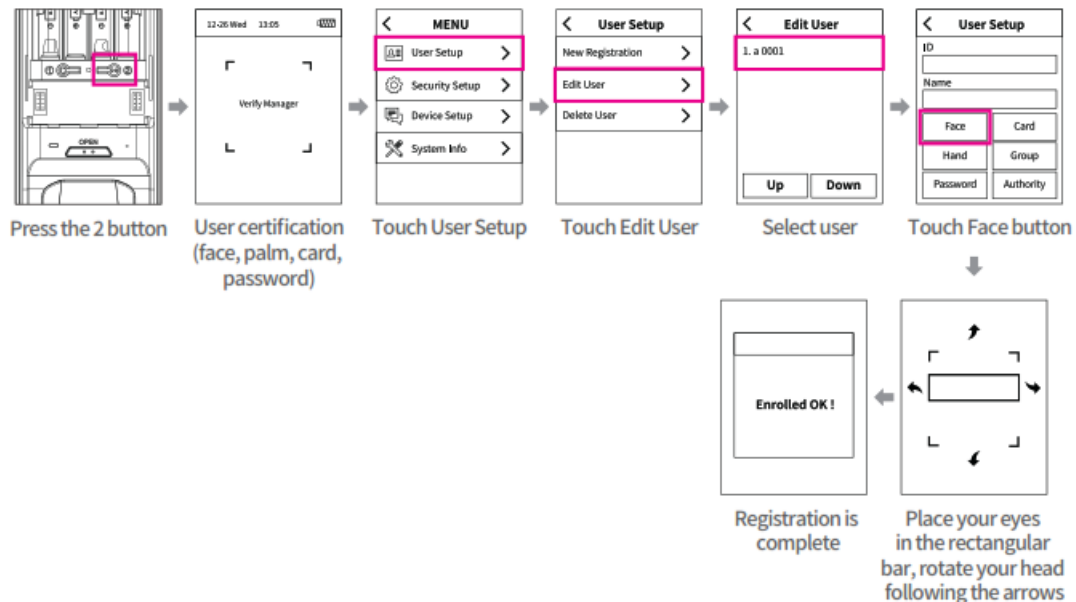


1. Face recognition registration

Follow the steps to register face recognition.



2. Face recognition registration



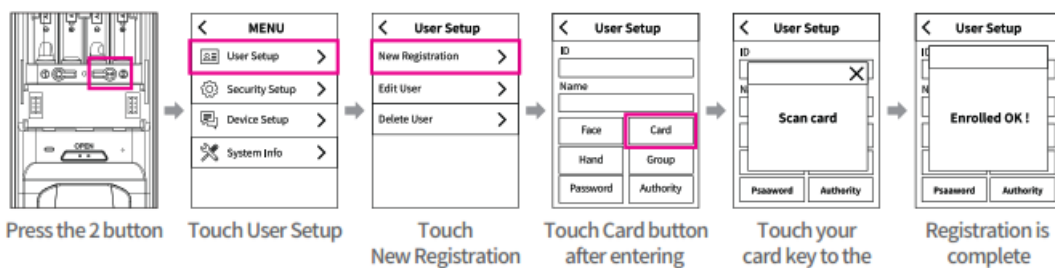
You cannot open the door with pictures or videos. (growing children need to Caudal register every 6 months to 2 years. Re-register after cosmetic surgery.)



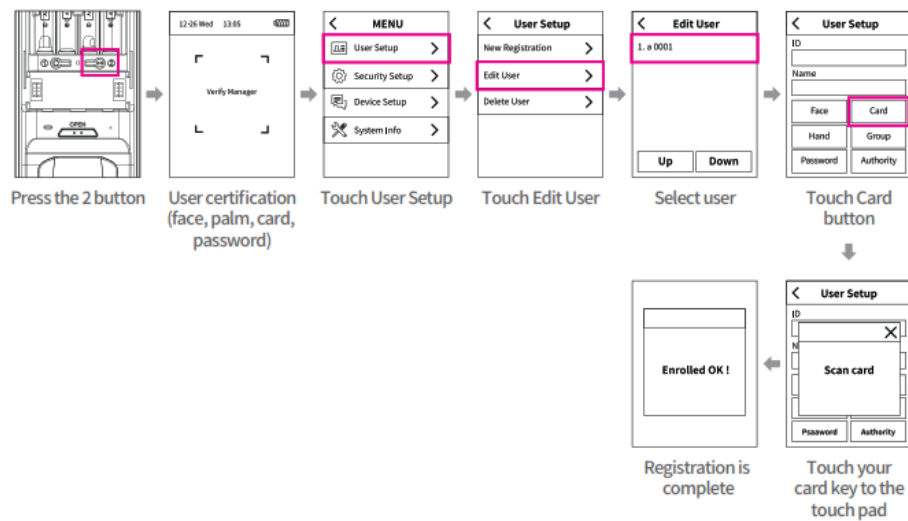
& Register the card with the door open Caution

3. Card (RFID) registration

Follow the steps to register the Card Key



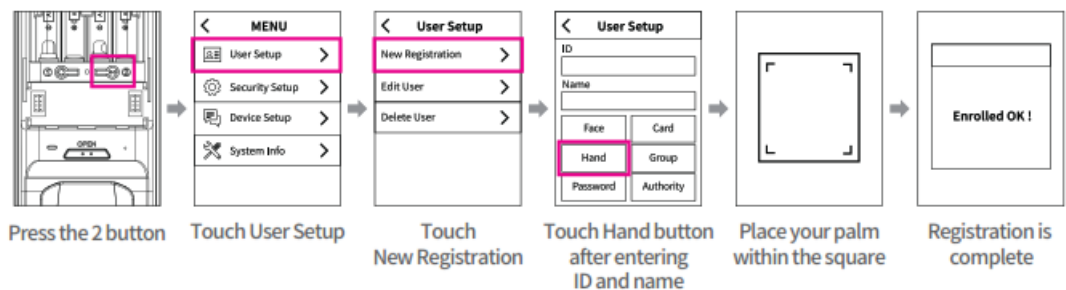
4. Card (RFID) registration



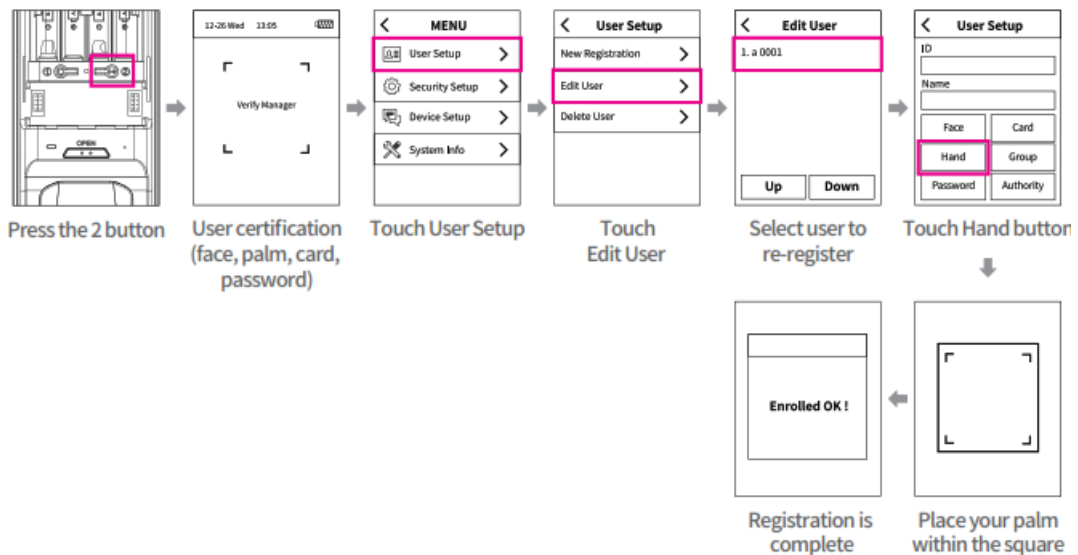
& Register palm recognition with the door open.

5. Palm registration

Follow the steps to register the palm recognition.

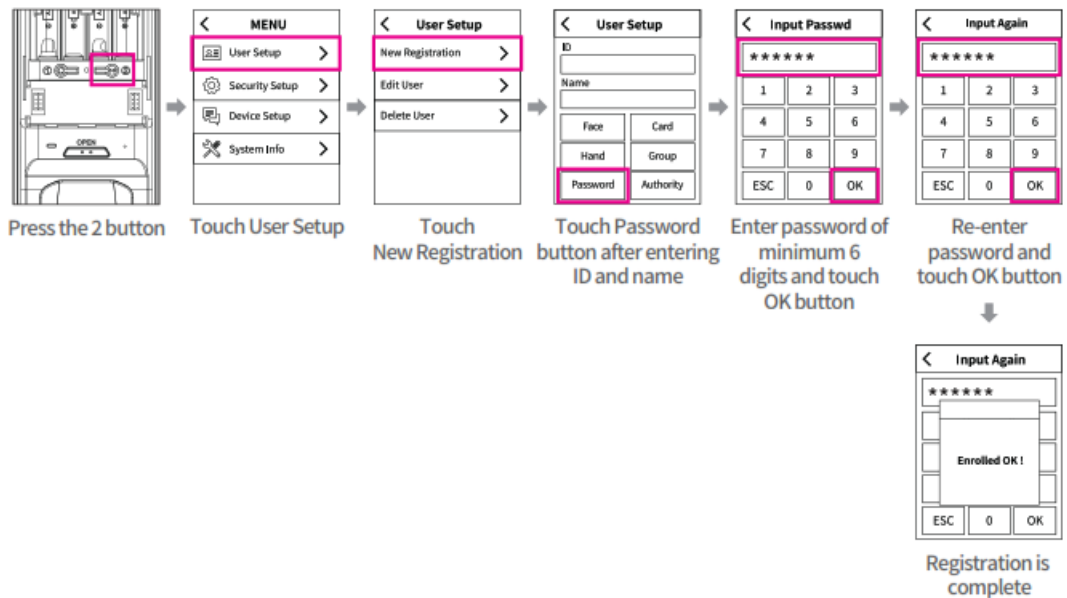


6. Password registration

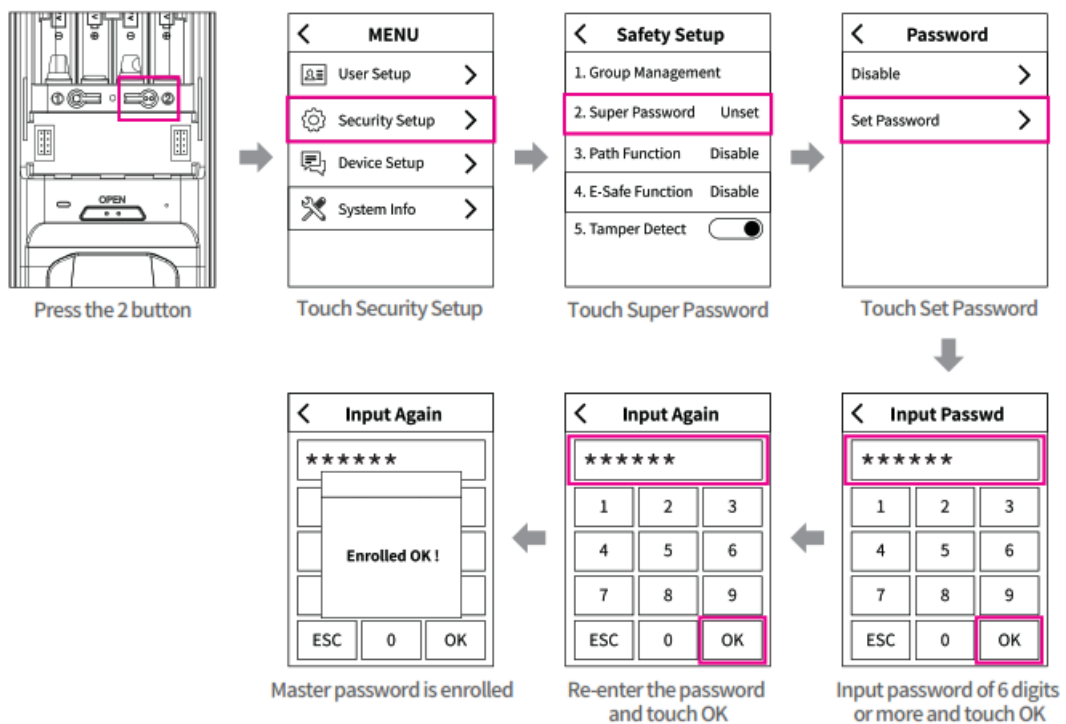


7. Palm re-registration

Follow the steps to register a password.

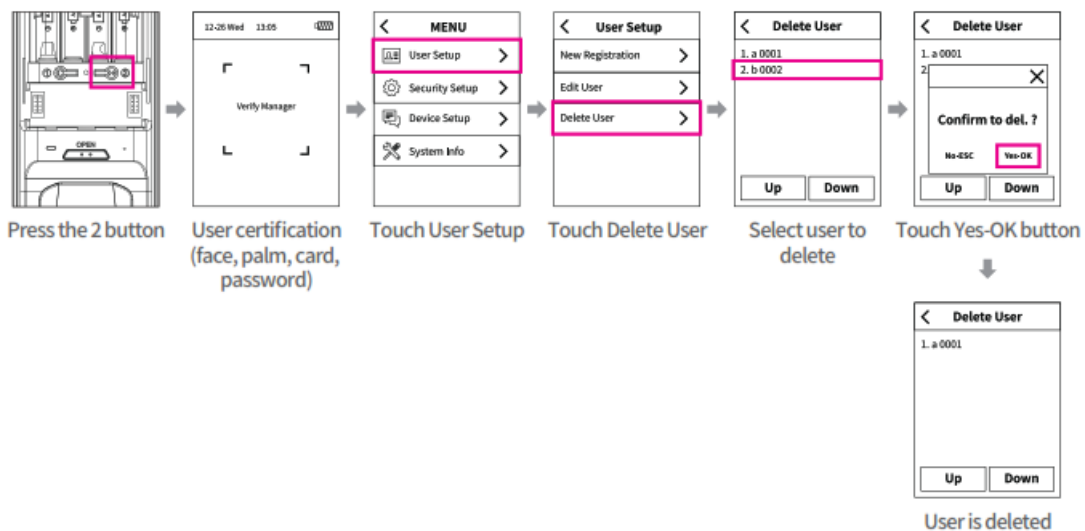


8. Password re-registration



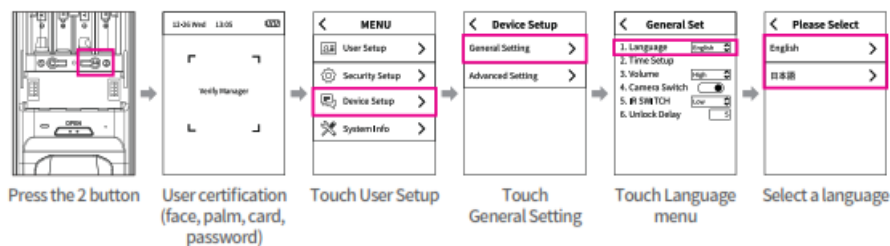
9. Delete user

Follow the steps to delete the user.



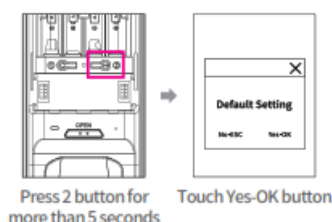
10. Language setting

Follow the steps for language setting.



11. Reset User

Keep the door open, and follow the steps to reset all registered information.



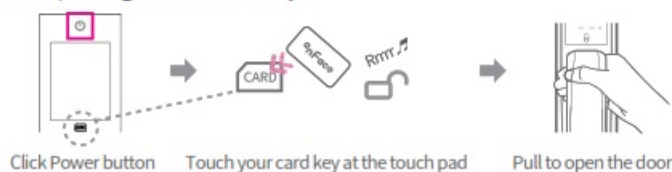
If you do not open the door within 5 seconds after face recognition, Caubco entering the password, or using card key, the door will automatically close.

12. Opening and closing the door from the outside.

○ Opening with face recognition



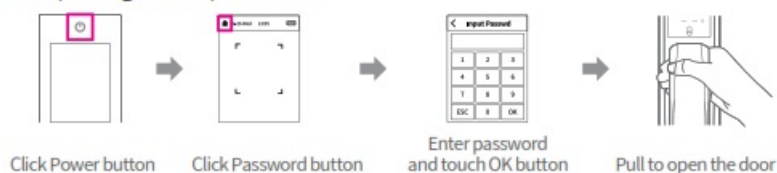
○ Opening with a card key



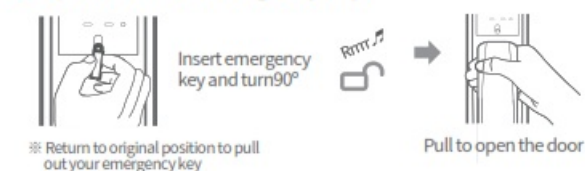
○ Opening with palm recognition



○ Opening with a password



○ Open with the emergency key



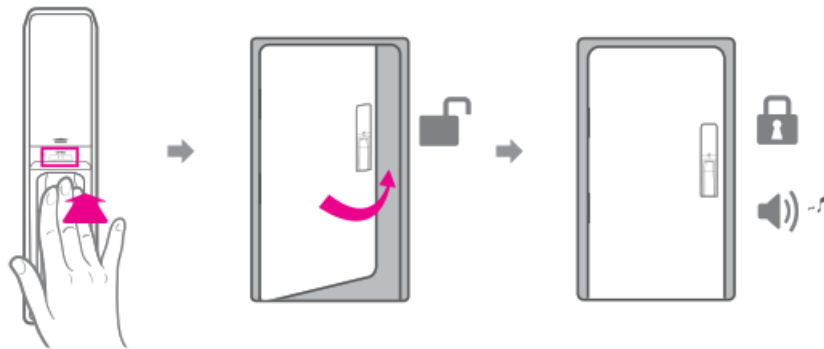
Caution Keep the emergency key outside in your bag, car, etc. In order to use it when the door lock

malfunctions.

- The door lock will beep when the deadbolt is stuck in the door or if it senses any abnormal operation.

13. Opening and closing the door from the inside

Opening with handle

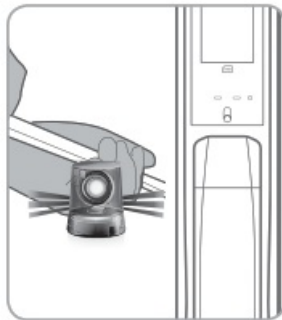


01. Pushing the handle or pressing the open button will unlock and open the door.

02. The closing sound is triggered within 5 seconds of closing the door.

14. Turning off the intrusion alarm

Break alarm function

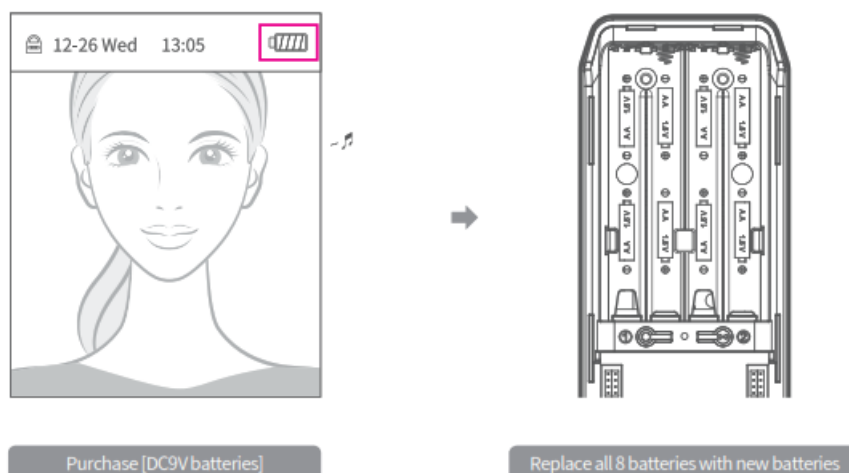


Opening the closed door with force or intrusions will trigger an intrusion alarm.

> Turn off the alarm with registered face recognition/card key/palm/password Any of (Facerecog, nation),(Palm recognition], (Password), and/or (Card key)after pressing the (Power) button will turn off the intrusion alarm. displacing the batteries also turns off the intrusion alarm.

15. Changing batteries

The battery level is always displayed.



Changing batteries

- Battery lifetime: 4-8 months assuming 10 uses per day
- Low battery alarm: Open the battery cover when you hear a low battery alarm to change all 8 1.5V AA batteries with the appropriate +/- position.

– Do not mix batteries of different remaining lifetime levels.

YOU can use 81.5V AA batteries. (Delivered with 4 batteries)

Automatic closing may stop functioning if you do not change the batteries in time.

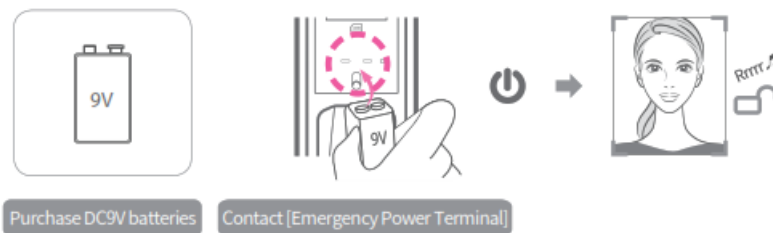


Carton

- Do not mix batteries of different remaining lifetimes, and we suggest you use batteries of the same brand.
- Mixing batteries of a different life may cause leakage.

16. Using the external power terminal

The external power terminal uses DC9V(6F22/FC-1) batteries from the outside to provide emergency power when the door lock completely runs out of energy which disables face recognition/card key/ palm recognition/ password.



caution

- You need to purchase DC9V batteries separately. We do not provide DC9V ZSbatteries.
- Limit DC9V uses to emergency uses only because prolonged use of DC9v batteries may cause device malfunctions

MEMO

Product warranty

Product name	ONCE – D5	Warranty period
Purchase date		1 year from the purchase date
Branch		

we guarantees the following tn accordance with consumer product dispute resolution standards. (Fair Trade Commission)

On product warranty

- Warranty period is 1 year from the purchase date.
- Make sure to read the user manual Visits by service providers cause fees.
- Visit, tech help. and component fees are incurred for paid services even during the warranty period

Types of Consumer Damages		Compensation history	
		Within warranty period	After warranty period
Malfunctions during normal uses	Malfunctions within 1 year of purchase	Free repair	Repair of charge
	3 occurrences of the same malfunction	Free repair	Repair of charge
	4 occurrences of the same malfunction	1-to-1 exchange	Repair of charge
	Our company is out of repair parts	1-to-1 exchange/ refund at a purchase price	10% refund on the fixed depreciated amount
Consumer negligence and carelessness	Consumer negligence and carelessness	■■■■■	
	Malfunctions due to unintended uses		

Charged repair services (consumer cost) responsibilities

- Repairs due to password losses
- Checkup requests without apparent causes
- Repair visits due to battery misplacement, negligent uses, and consumer carelessness.
- malfunctions and damages due to intentional or external causes
- malfunctions and damages due to fire, or flood, or salt-related disasters and causes
- malfunction and damages due to instructed uses or "nice cleaning"
- malfunctions and damages due to 'living door deformation phenomenon' or 'door failure' problem




7, Wausau-Ro 35-Gil, Mapo-Gu, Seoul, Republic of Korea (04052)

Tel: 1600-6137

Fax: 02-598-6512

<http://doorlock.onface.net>

 This device is for domestic sales. Full A/S support and normal warranty scope may not apply for products bought or used outside of Korea. However, local dealers will provide installation and A/S support for areas with dealers that import our products.

FCC WARNING

This device complies with part 15 of the FCC Rules. Operation is subject to the following two conditions: (1) this device may not cause harmful interference, and (2) this device must accept any interference received, including interference that may cause undesired operation.

Any changes or modifications not expressly approved by the party responsible for compliance could void the user's authority to operate the equipment.


NOTE: This equipment has been tested and found to comply with the limits for a Class B digital device, pursuant to Part 15 of the FCC Rules. These limits are designed to provide reasonable protection against harmful

interference in a residential installation. This equipment generates, uses, and can radiate radio frequency energy and, if not installed and used in accordance with the instructions, may cause harmful interference to radio communications. However, there is no guarantee that interference will not occur in a particular installation. If this equipment does cause harmful interference to radio or television reception, which can be determined by turning the equipment off and on, the user is encouraged to try to correct the interference by one or more of the following measures:

- Reorient or relocate the receiving antenna.
- Increase the separation between the equipment and receiver.
- Connect the equipment into an outlet on a circuit different from that to which the receiver is connected.
- Consult the dealer or an experienced radio/TV technician for help.

To maintain compliance with FCC’s RF exposure guidelines, This equipment should be installed and operated with a minimum distance of 20cm from the radiator of your body: Use only the supplied antenna.

Documents / Resources

	<p>Onface 2AW4P-D5 FACE RECOGNITION DOORLOCK [pdf] User Manual 2AW4P-D5 FACE RECOGNITION DOORLOCK, 2AW4P-D5, 2AW4PD5, D5, FACE RECOGNITION DOORLOCK, DOORLOCK</p>
---	---