

# oneLIGHT 38150B LED Linear System Instruction Manual

[Home](#) » [oneLIGHT](#) » oneLIGHT 38150B LED Linear System Instruction Manual 

## Contents

- [1 oneLIGHT 38150B LED Linear System](#)
- [2 SPECIFICATIONS](#)
- [3 DIMENSION](#)
- [4 SURFACE INSTALLATION](#)
- [5 SUSPENDED INSTALLATION](#)
- [6 CONNECTION](#)
- [7 Documents / Resources](#)
- [8 Related Posts](#)



**oneLIGHT 38150B LED Linear System**

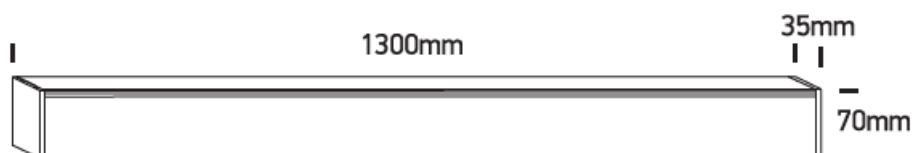


## SPECIFICATIONS

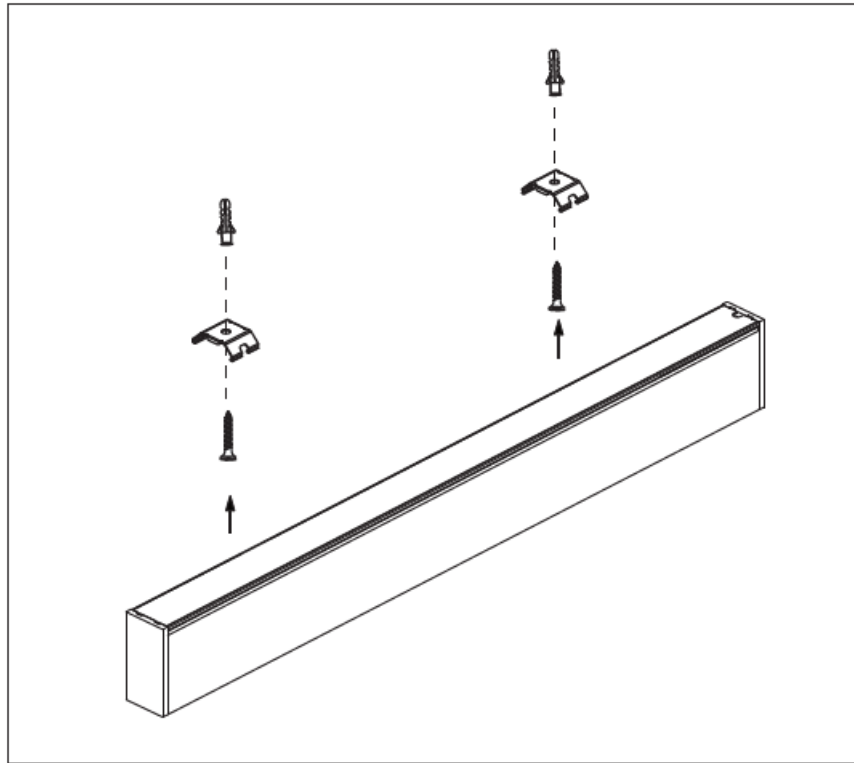


- 40W
- LED
- 230V
- IP20
- Aluminium
- Complete with 1000mA driver

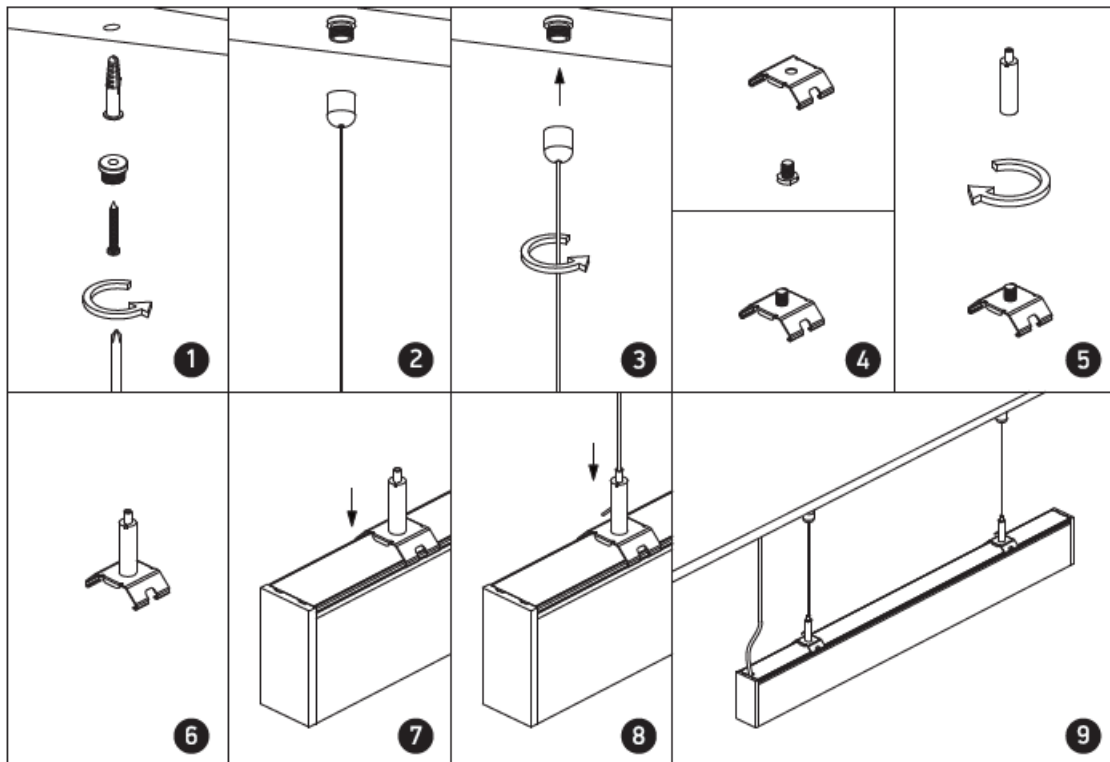
## DIMENSION



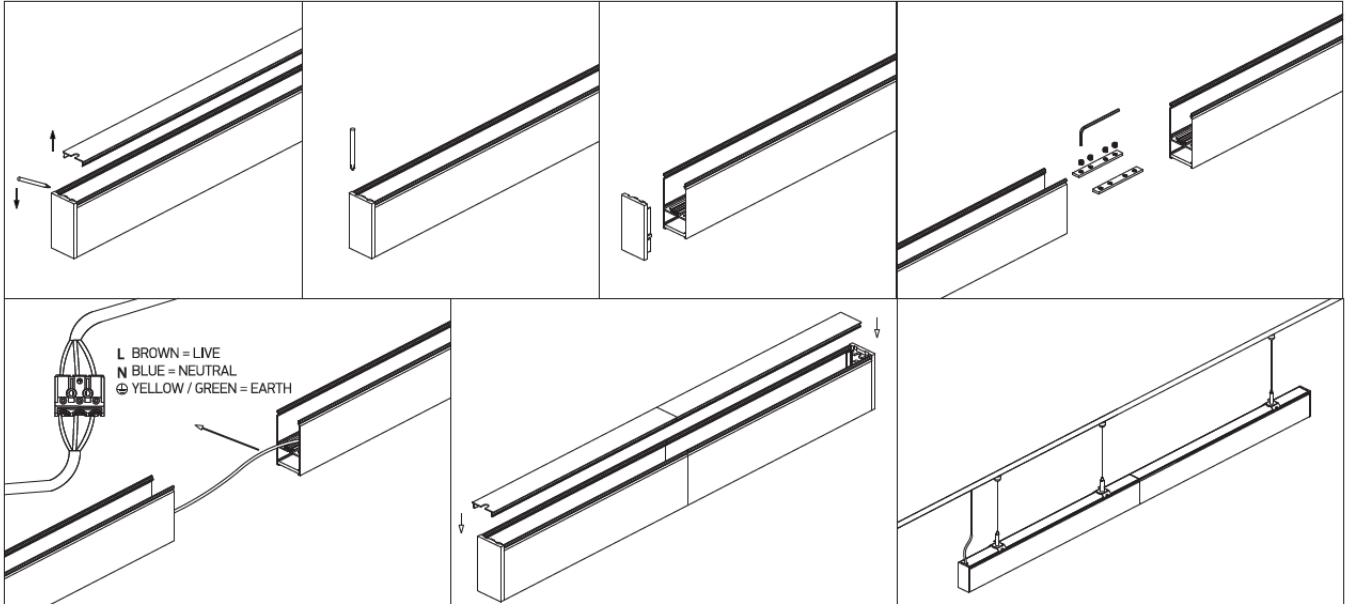
## SURFACE INSTALLATION



## SUSPENDED INSTALLATION



## CONNECTION

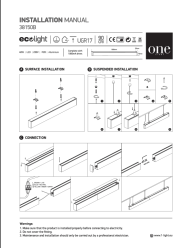


### Warnings:

1. Make sure that the product is installed properly before connecting to electricity.
2. Do not cover the fitting.
3. Maintenance and installation should only be carried out by a professional electrician.

[www.1-light.eu](http://www.1-light.eu)

## Documents / Resources

	<p><a href="#">oneLIGHT 38150B LED Linear System</a> [pdf] Instruction Manual 38150B, LED Linear System, 38150B LED Linear System, Linear System</p>
---	--