



# Onelap 15 Voice Monitoring Feature User Guide

[Home](#) » [ONELAP](#) » Onelap 15 Voice Monitoring Feature User Guide 

## Contents

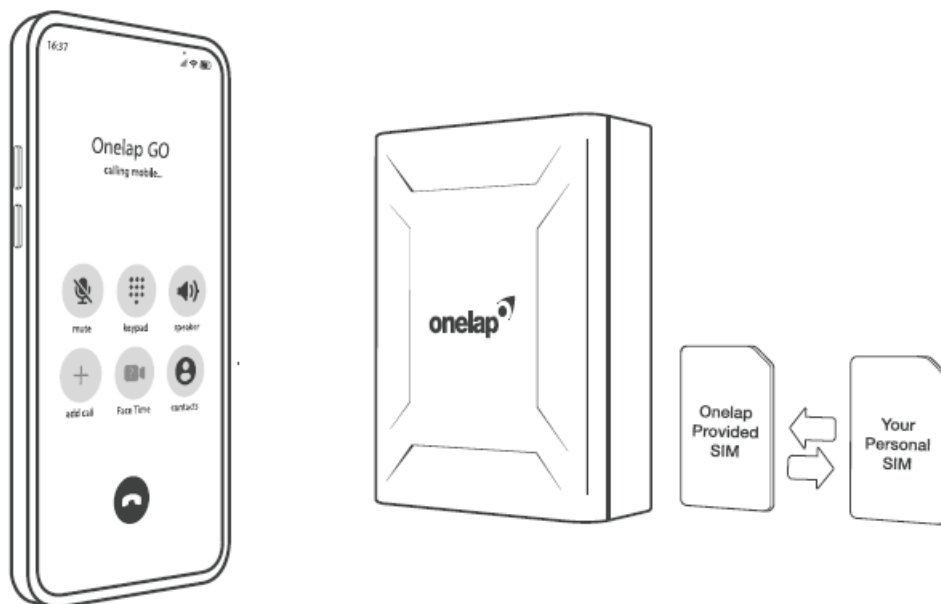
- [1 Onelap 15 Voice Monitoring Feature](#)
- [2 VOICE MONITORING](#)
- [3 DEVICE CHARGING](#)
- [4 COMPATIBLE SIM CARD](#)
- [5 NEED ANY HELP?](#)
- [6 WHAT'S INSIDE THE BOX](#)
- [7 SIM CARD SETUP](#)
- [8 Documents / Resources](#)
  - [8.1 References](#)
- [9 Related Posts](#)



## Onelap 15 Voice Monitoring Feature



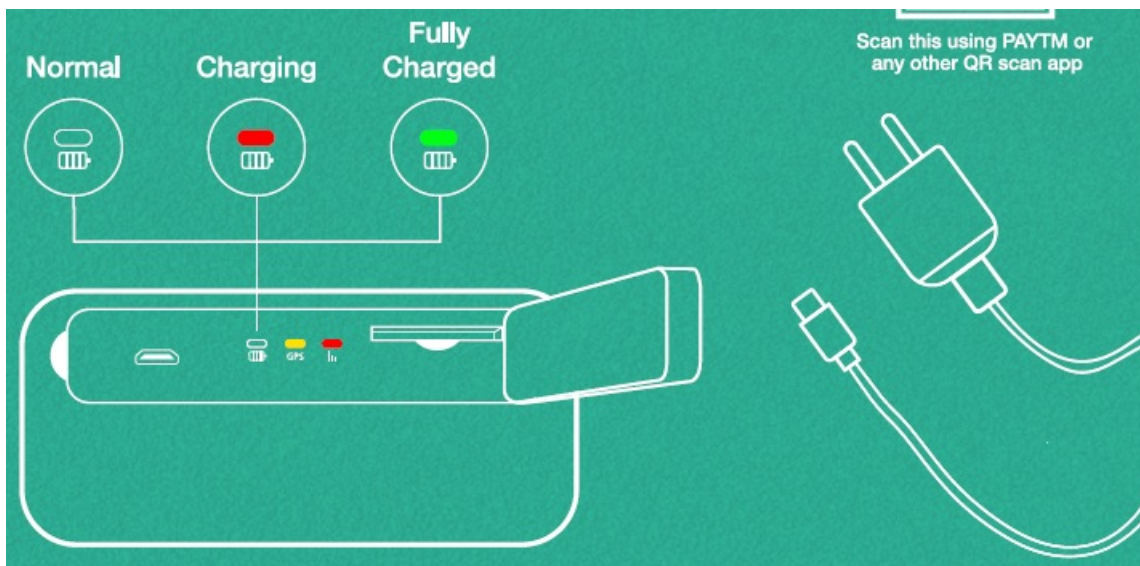
## VOICE MONITORING



## HOW TO CALL?

1. Rest your persona seminally me, vodka,
2. BSNL except 0 (which has data and talk time)
3. Call on your personal sim card and the call will automatically be picked by the device.

## DEVICE CHARGING

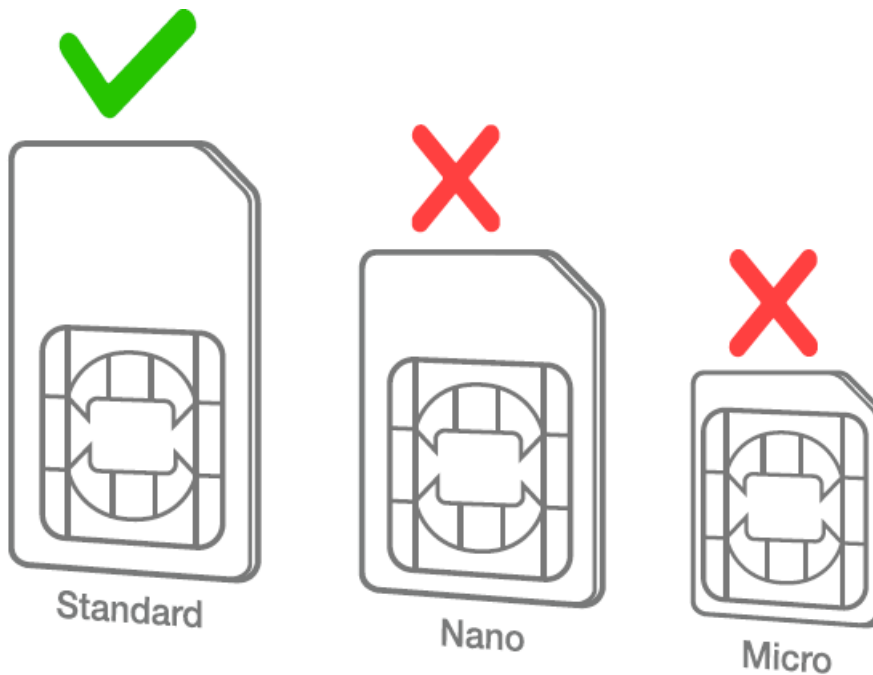


Open the Rubber Flap of the device and connect the charger to the USB port.

**Note**

1. The device gets completely charged in overnight.
2. Heating of the device is normal during charging.
3. You can watch the battery percentage of the device in the mobile app.
4. The stable RED light means device is charging. Do not remove the charger until the device shows GREEN light.
5. Use any 5V – 2A charging adapter for better battery performance.

**COMPATIBLE SIM CARD**



**NEED ANY HELP?**



- If you need any help regarding any issue, kindly contact our customer support team.

[support@onelap.in](mailto:support@onelap.in) [www.youtube.com/onelap](http://www.youtube.com/onelap)

### Track Anything, That Moves

- Download Onelap app from the following or log onto [www.onelap.in](http://www.onelap.in)

Head Office: Gopala Tower, Corporate Office 9A-9B, Rajendra Place, Delhi, 110008, Website: [www.onelap.in](http://www.onelap.in),  
Whatsapp No.: +91 7217760961, Toll-Free No.: +91 1800 103 0274 Monday to Saturday 10:30 AM to 6:30 PM

### WHAT'S INSIDE THE BOX



1. Device



2. USB Cable

### SIM CARD SETUP

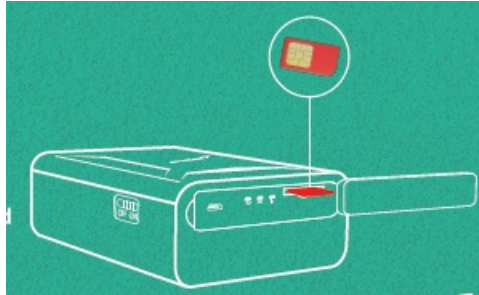
#### 1. STEP 1

Open the rubber flap with the help of Groove.



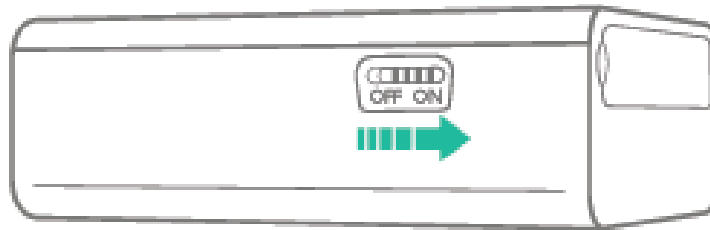
## 2. **STEP 2**

Make sure the sim card is inserted into the device.



## 3. **STEP 3**

Turn on the device by simply sliding the power button to the right.



## 4. **STEP 4**

Make sure the GPS and GSM LEDs starts glowing when the device is turned on.



## 5. **STEP 5**

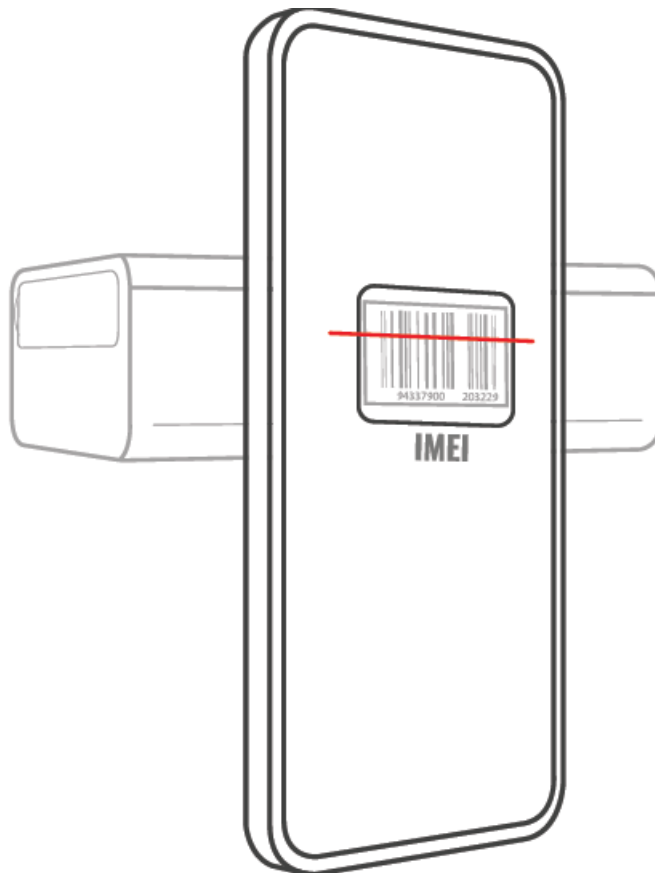
Download Onelap application from Play Store or Apple Store and Sign Up.



#### 6. STEP 6

Add the device by scanning the Barcode and proceed to complete the Activation.

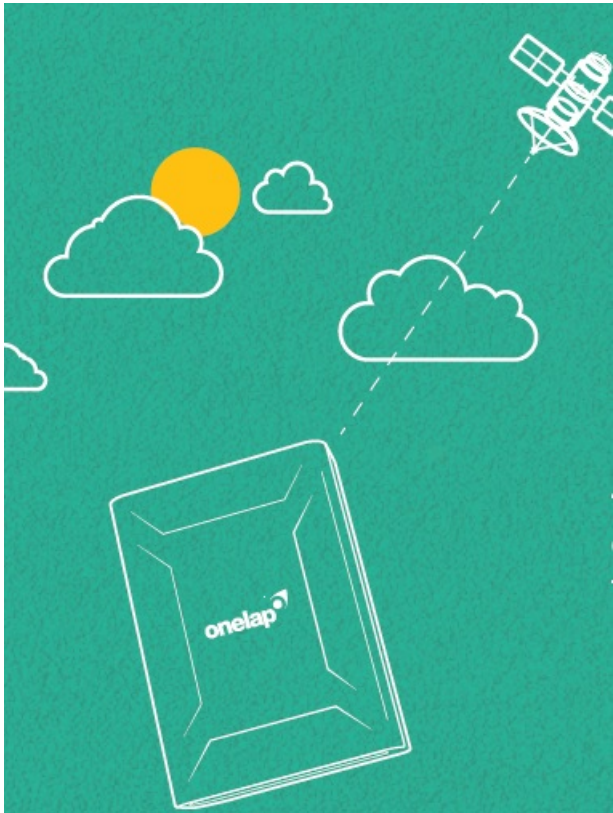
**Note:** If IMEI shows invalid then, kindly contact customer care.



#### 7. STEP 7

Turn ON the device and take it out under the Open Sky and move it for few kilometers to get the Tracking started.

**Note:** Make sure the device does not have direct metal obstruction and the device logo should be facing towards the sky.




- Scan this using PAYTM or any other QR scan app



---

## Documents / Resources

	<a href="#">Onelap 15 Voice Monitoring Feature</a> [pdf] User Guide 15 Voice Monitoring Feature, 15, Voice Monitoring Feature, Monitoring Feature, Feature
---	---

## References

- [User Manual](#)

