



OneDer YD-806 Bluetooth Speaker with Microphone Instructions

[Home](#) » [OneDer](#) » OneDer YD-806 Bluetooth Speaker with Microphone Instructions 

Contents

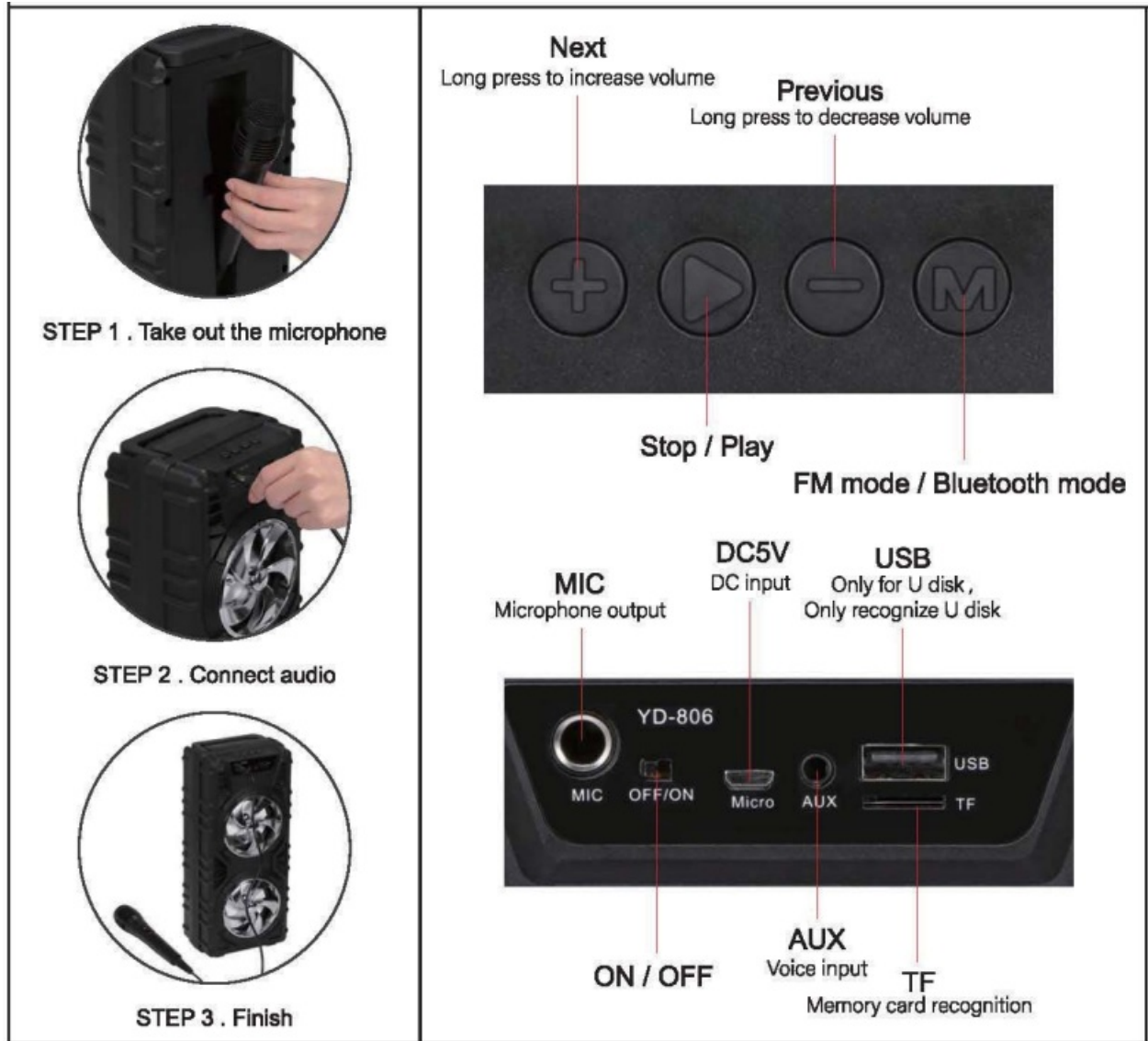
- [1 OneDer YD-806 Bluetooth Speaker with Microphone](#)
- [2 Bluetooth speaker with microphone – YD-806](#)
- [3 Instructions](#)
- [4 FCC Warning Statement](#)
- [5 Documents / Resources](#)
- [6 Related Posts](#)

ONEDER

OneDer YD-806 Bluetooth Speaker with Microphone



Bluetooth speaker with microphone – YD-806



Instructions

Turn on the Bluetooth speaker and automatically switch to Bluetooth mode;
Turn on the Bluetooth of the mobile phone, find "BT SPEAKER", and click to connect. It may take a little longer for the mobile phone to recognize the Bluetooth when using it for the first time. Wait for 30-50 seconds. If the mobile phone still cannot recognize the Bluetooth, you can turn off the Bluetooth of the mobile phone, and then restart to Turn it on, then the phone will automatically search the Bluetooth again, you can also turn off the audio and turn it on again.

- Click "+" to switch to the next song. Click "-" to switch to the previous song. Long press "+" increases the volume. Long press "-" to decrease the volume.
- Click the "triangle button" to pause playback.
- Click the "triangle button" to resume playback.
- Click the "M" button to switch to FM mode, click again to switch to Bluetooth mode.

FCC Warning Statement


Changes or modifications not expressly approved by the party responsible for compliance could void the user's authority to operate the equipment. This equipment has been tested and found to comply with the limits for a Class B digital device, pursuant to Part 15 of the FCC Rules. These limits are designed to provide reasonable

protection against harmful interference in a residential installation. This equipment generates uses and can radiate radio frequency energy and, if not installed and used in accordance with the instructions, may cause harmful interference to radio communications. However, there is no guarantee that interference will not occur in a particular installation. If this equipment does cause harmful interference to radio or television reception, which can be determined by turning the equipment off and on, the user is encouraged to try to correct the interference by one or more of the following measures:

- Reorient or relocate the receiving antenna.
- Increase the separation between the equipment and receiver.
- Connect the equipment into an outlet on a circuit different from that to which the receiver is connected.
- Consult the dealer or an experienced radio/TV technician for help.

This device complies with part 15 of the FCC Rules. Operation is subject to the following two conditions: (1) This device may not cause harmful interference, and (2) this device must accept any interference received, including interference that may cause undesired operation. The device has been evaluated to meet general RF exposure requirements.

Documents / Resources

	<p>OneDer YD-806 Bluetooth Speaker with Microphone [pdf] Instructions YD-806, YD806, 2A7G6-YD-806, 2A7G6YD806, Bluetooth Speaker with Microphone, YD-806 Bluetooth Speaker with Microphone</p>
---	--