



ONE TOUCH KC08 Automatic Can Opener User Manual

[Home](#) » [ONE TOUCH](#) » ONE TOUCH KC08 Automatic Can Opener User Manual 

ONE·TOUCH™

www.ONETOUCHPRODUCTS.com

AUTOMATIC CAN OPENER
(The Classic)



USER MANUAL
Model no.: KC08

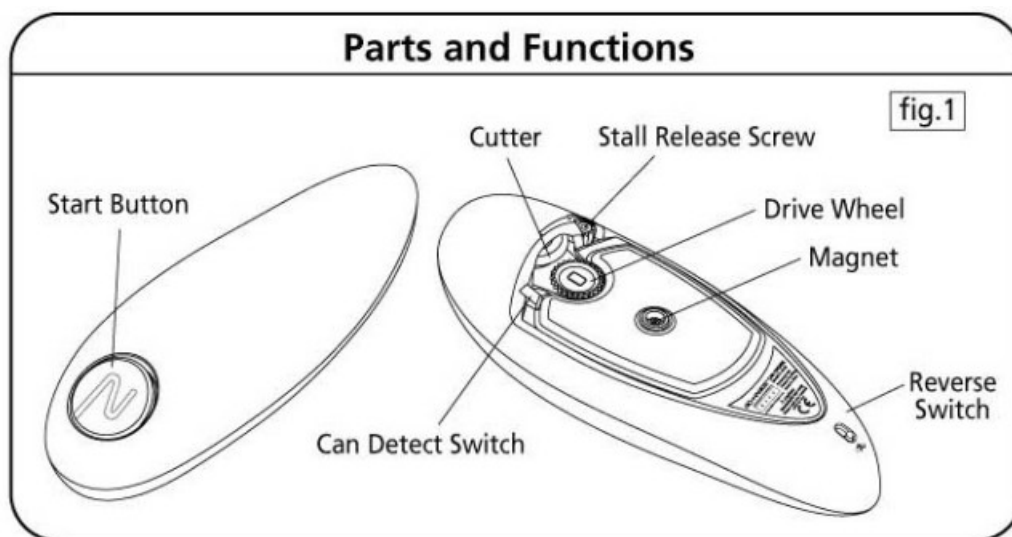
CAUTION

- Read all instructions carefully before using your Can Opener.
- Close supervision is necessary when your Can Opener is used by or near children.
- **DO NOT** open pressurized (aerosol-type) cans.
- **DO NOT** open cans of flammable liquids such as lighter fluids.
- Make sure the motor has stopped completely before taking off the bottom cover for battery replacement.
- During battery replacement **DO NOT** press the switches on the bottom and the button on the top of your Can Opener to avoid turning the unit on.
- Before cutter cleaning, remove batteries to avoid accidentally turning the unit ON.
- Avoid contact with moving parts. Keep hands, hair, jewelry, clothing etc away from moving parts during operation to prevent injury, and/or damage to the Can Opener.
- To maintain your Can Opener at its optimal condition, **DO NOT** immerse it in water or any other liquids.
- **DO NOT** try to adjust or remove the cutter screw.
- **NOT** suitable for dish washer.

SAVE THESE INSTRUCTIONS

This Can Opener is intended for household use only.

Read the following instructions before using for the first time.



Contents

- [1 Getting Started](#)
- [2 Care and Maintenance](#)
- [3 Trouble Shooting](#)
- [4 Technical Specifications](#)
- [5 FCC STATEMENT](#)
- [6 Documents / Resources](#)
- [7 Related Posts](#)

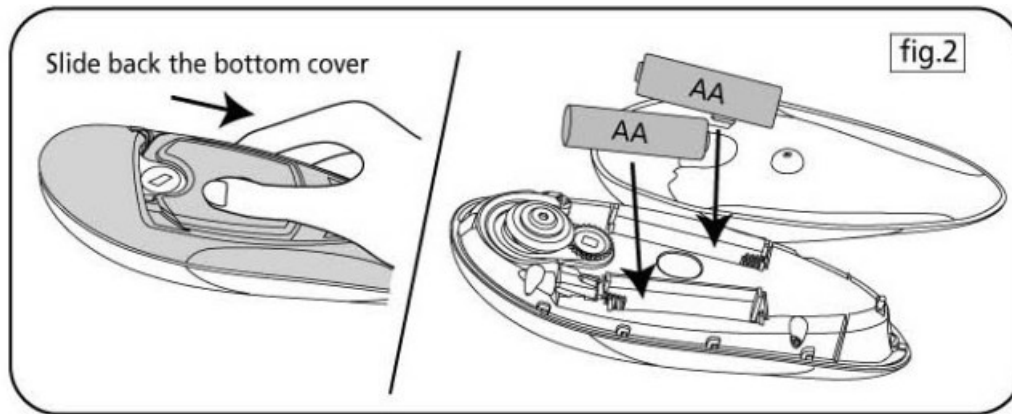
Getting Started

BATTERY INSTALLATION

Slide back the bottom cover, to remove and install 2 AA alkaline or rechargeable batteries into the battery compartment according to the polarity (+/-) instruction. Replace the bottom cover after the batteries have been installed (see fig.2). Always replace both batteries at once and never mix old and new batteries or batteries of

different types.

NOTE: The cutter will not operate when the bottom cover is removed from the unit.



USING THE “ONE TOUCH” CAN OPENER

1. Place your Can Opener on top of the can with its rim positioned in the groove at the bottom of the Can Opener (see fig.3).

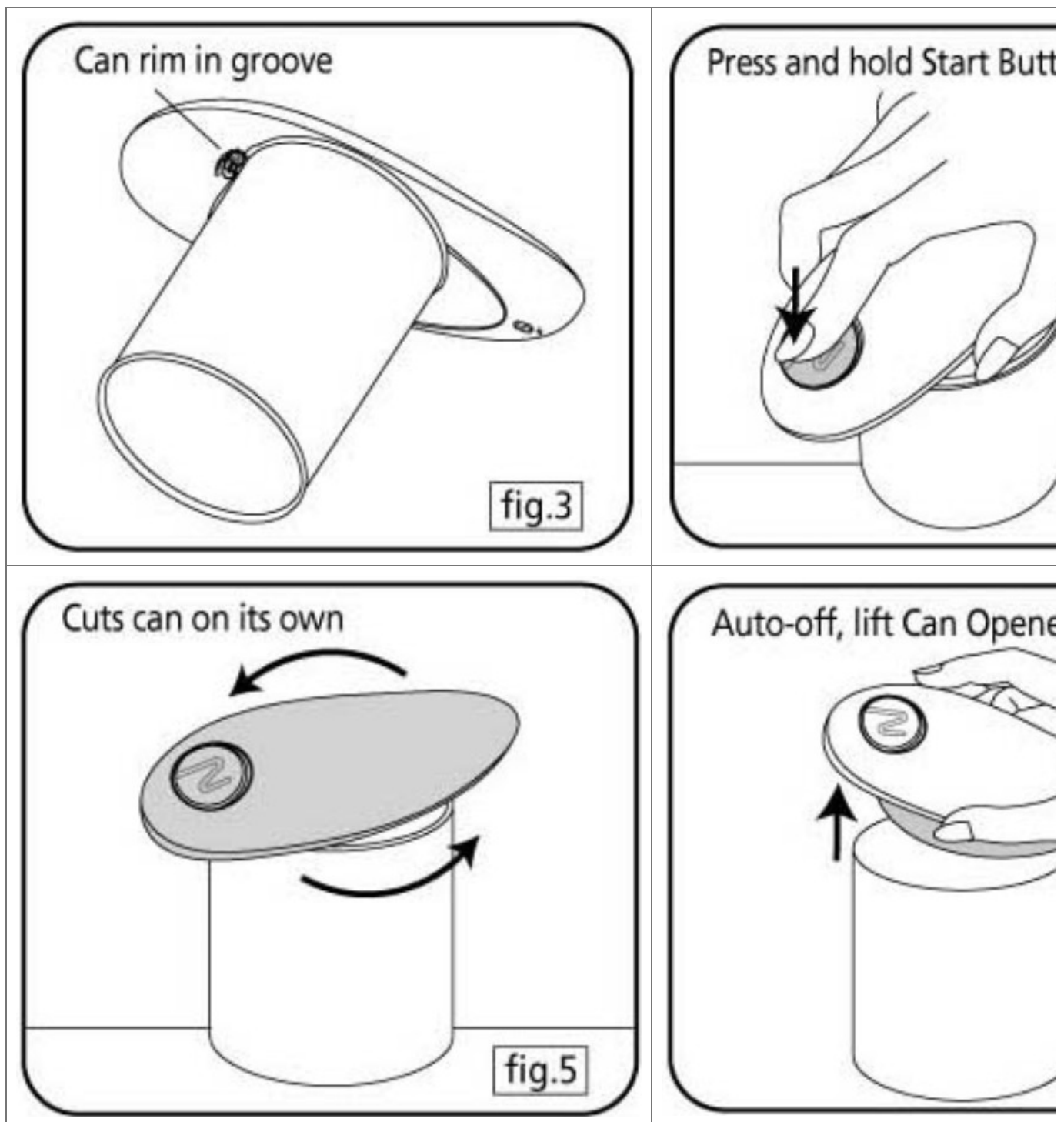
NOTE: The cutter will not operate unless it is positioned correctly on the rim of the can. To open the cans with tab, turn them upside-down, so that the Can Opener can work on the lid without tab.

2. With the can on a flat surface, press the Start button for about one second and release it once the Can Opener starts to cut the can (see fig.4). After cutting, the Can Opener will stop automatically. (see fig.5)

NOTE: The maximum can size that can be fully cut in one go is 90mm (3.5”) diameter. If the lid of a bigger can, needs to be completely removed, press the Start Button again and let go once it resumes cutting. Once again, the Can Opener will stop automatically after cutting.

3. When the cutting has completed, lift the Can Opener off the can. A magnet on the Can Opener will pick up the lid as well for convenience (see fig.6).

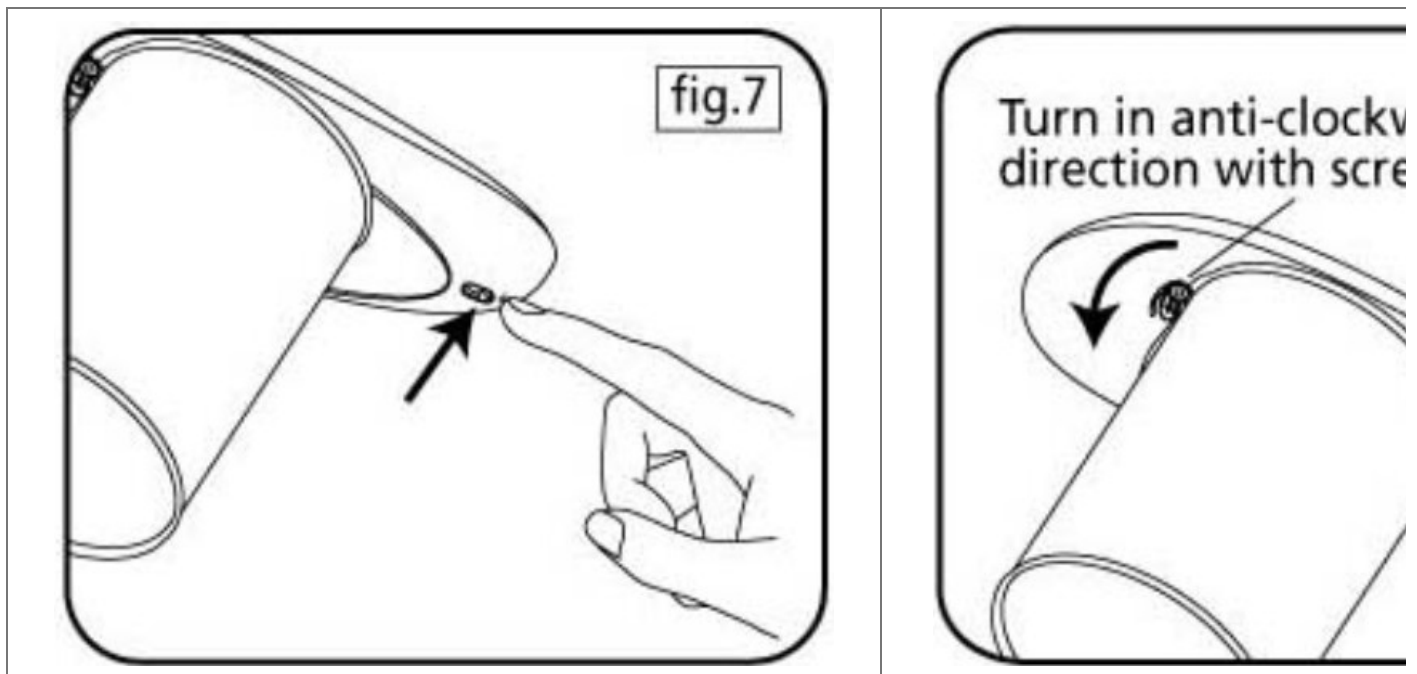
NOTE: There is functional sharp edge on the round cutter, and should be treated with care.



Care and Maintenance

1. If the Can Opener slows during cutting, this may indicate low battery level and the batteries should be replaced.
If the Can Opener stops during operation, see "Trouble Shooting" below.
2. To clean the cutter, first slide off the bottom cover and remove the batteries as a safety precaution. Wipe the cutter with a damp cloth or a sponge, using a mild non-abrasive cleaner, followed with a clean, dry cloth to dry it completely.

Trouble Shooting



1. If the Can Opener is jammed due to low battery level or a deformed can rim, press the small button at the rear of the Can Opener to activate the reverse so that the can is released, keep the Reverse Switch depressed until the Can Opener stops (see fig.7).
2. If batteries are depleted the Can Opener may not be released by pressing the Reverse Switch. In this case, insert a 4 or 5 mm Crosshead (or flat) screwdriver into the Stall Release Screw, and slowly turn it in a anti-clockwise direction as viewed underneath (as arrow) until the can is released (see fig.8).

NOTE: After replacing the batteries following use of the Stall Release Switch, press and hold the Reverse Switch and Can Detect Switch (see fig.1) together until the Can Opener resets to its start position. Keep your fingers away from the Cutter and Drive Wheel to prevent injury.

3. Cans with heavy seams, odd shapes, or uneven rims may stall the Can Opener. If this happens, follow above procedure to release the can. Start the cutting action just beyond any minor bump or dent in a can.

NOTE: The Can Opener will not open rimless cans or cans with odd corners.

Technical Specifications

Operate voltage: DC2.4-3V

Battery: 2 x AA alkaline or rechargeable batteries

Maximum can cutting size in one cycle: diameter 90mm (3.5") (preferred)

FCC STATEMENT

This device complies with Part 15 of the FCC Rules. Operation is subject to the following two conditions:

1. this device may not cause harmful interference, and
2. this device must accept any interference received, including interference that may cause undesired operation.

Warning: Changes or modifications to this unit not expressly approved by the party responsible for compliance could void the user authority to operate the equipment.

NOTE: This equipment has been tested and found to comply with the limits for a Class B digital device, pursuant to Part 15 of the FCC Rules. These limits are designed to provide reasonable protection against harmful interference in a residential installation. This equipment generates, uses and can radiate radio frequency energy

and, if not installed and used in accordance with the instructions, may cause harmful interference to radio communications.

However, there is no guarantee that interference will not occur in a particular installation. If this equipment does cause harmful interference to radio or television reception, which can be determined by turning the equipment off and on, the user is encouraged to try to correct the interference by one or more of the following measures:


- Reorient or relocate the receiving antenna.
- Increase the separation between the equipment and receiver.
- Connect the equipment into an outlet on a circuit different from that to which the receiver is connected.
- Consult the dealer or an experienced radio/TV technician for help.

© 2007 Daka Research Inc. All rights reserved.

www.onetouchproducts.com

Patented and Patent Pending
Printed in China

Documents / Resources

	<p>ONE TOUCH KC08 Automatic Can Opener [pdf] User Manual KC08 Automatic Can Opener, KC08, Automatic Can Opener</p>
--	--