



one LIGHT 65656BT LED Track Spot Installation Guide

[Home](#) » [one LIGHT](#) » one LIGHT 65656BT LED Track Spot Installation Guide 

one LIGHT 65656BT LED Track Spot Installation Guide



Contents

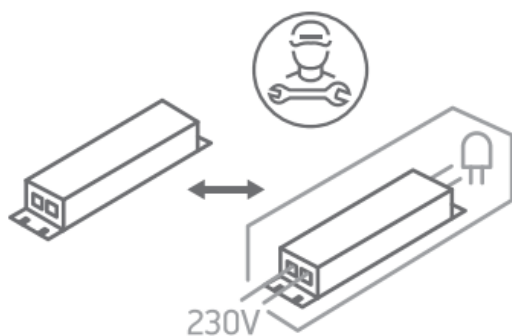
- [1 Instruction](#)
- [2 Assembly Instruction](#)
- [3 Documents / Resources](#)
- [4 Related Posts](#)

Instruction

ecotrackspot

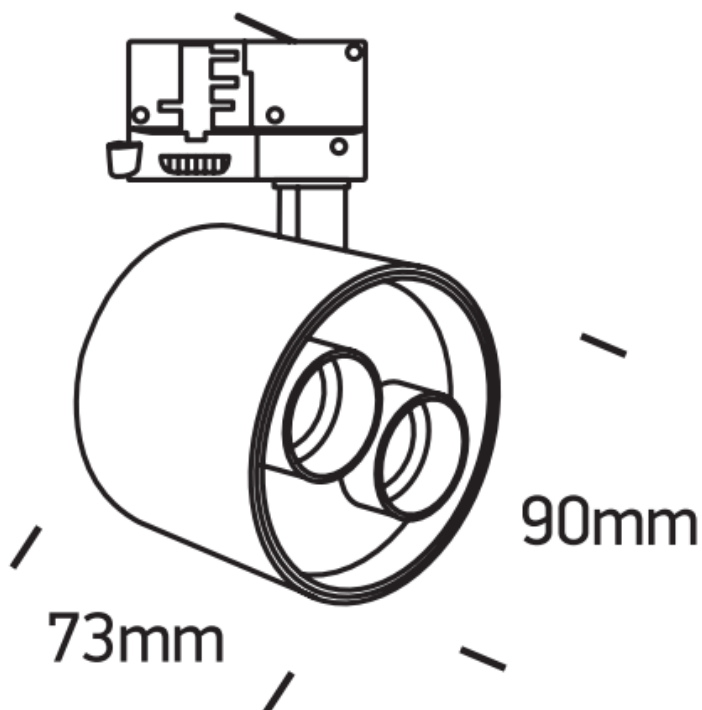


230V SMD 5050 12W IP20 Aluminum

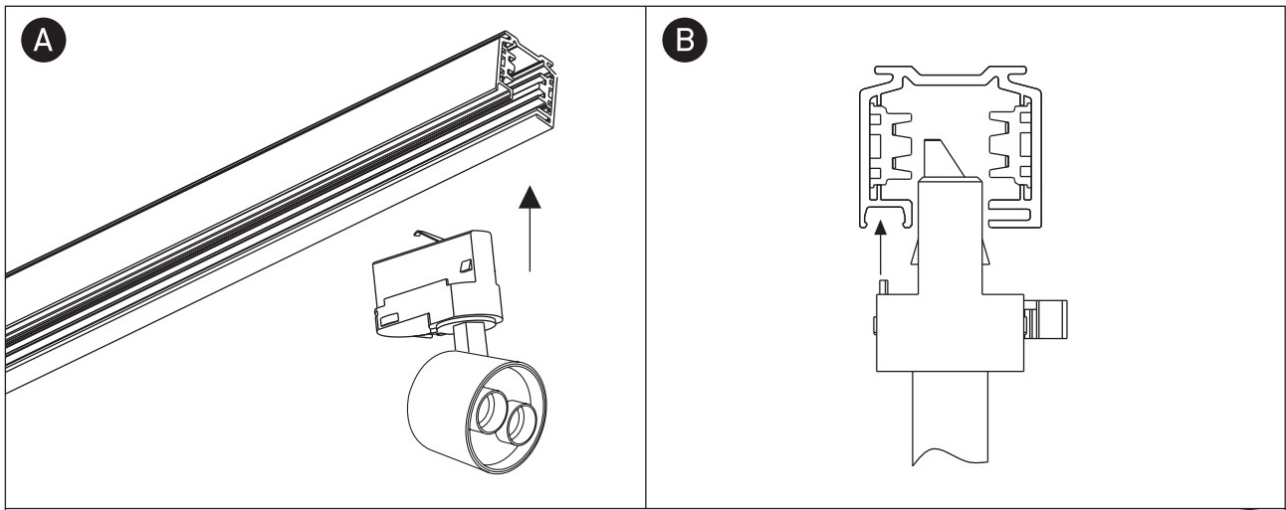


90
CRI

Dimensions



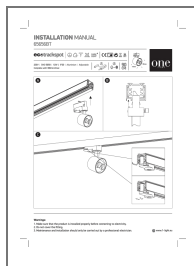
Assembly Instruction



Warnings:

1. Make sure that the product is installed properly before connecting to electricity.
2. Do not cover the fitting.
3. Maintenance and installation should only be carried out by a professional electrician.

Documents / Resources



[one LIGHT 65656BT LED Track Spot](#) [pdf] Installation Guide
65656BT LED Track Spot, 65656BT, 65656BT Track Spot, LED Track Spot, Track Spot, LED Spot, Spot