

one LIGHT 38225M LED Linear Range



one LIGHT 38225M LED Linear Range Instruction Manual

[Home](#) » [one LIGHT](#) » one LIGHT 38225M LED Linear Range Instruction Manual 

Contents

- [1 one LIGHT 38225M LED Linear Range](#)
- [2 Product Specifications](#)
- [3 Installation](#)
- [4 CCT Variable Switch](#)
- [5 Complete with driver](#)
- [6 Documents / Resources](#)
 - [6.1 References](#)

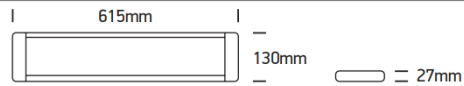
one
L I G H T

one LIGHT 38225M LED Linear Range

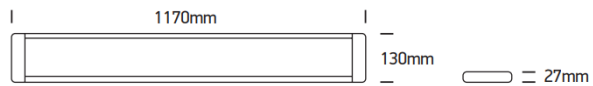


Product Specifications

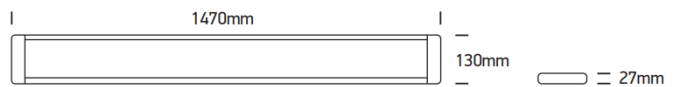
38225M: 230V | SMD 2835 | 25W | IP20 | Aluminium + plastic



38248M: 230V | SMD 2835 | 48W | IP20 | Aluminium + plastic



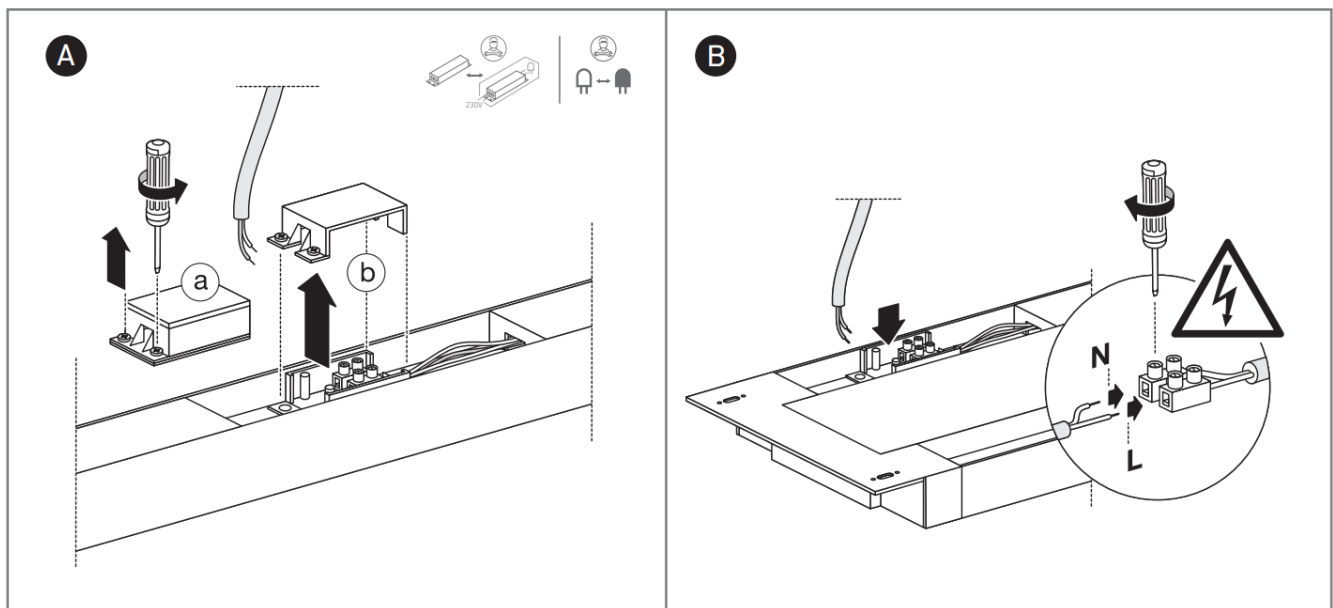
38250M: 230V | SMD 2835 | 50W | IP20 | Aluminium + plastic

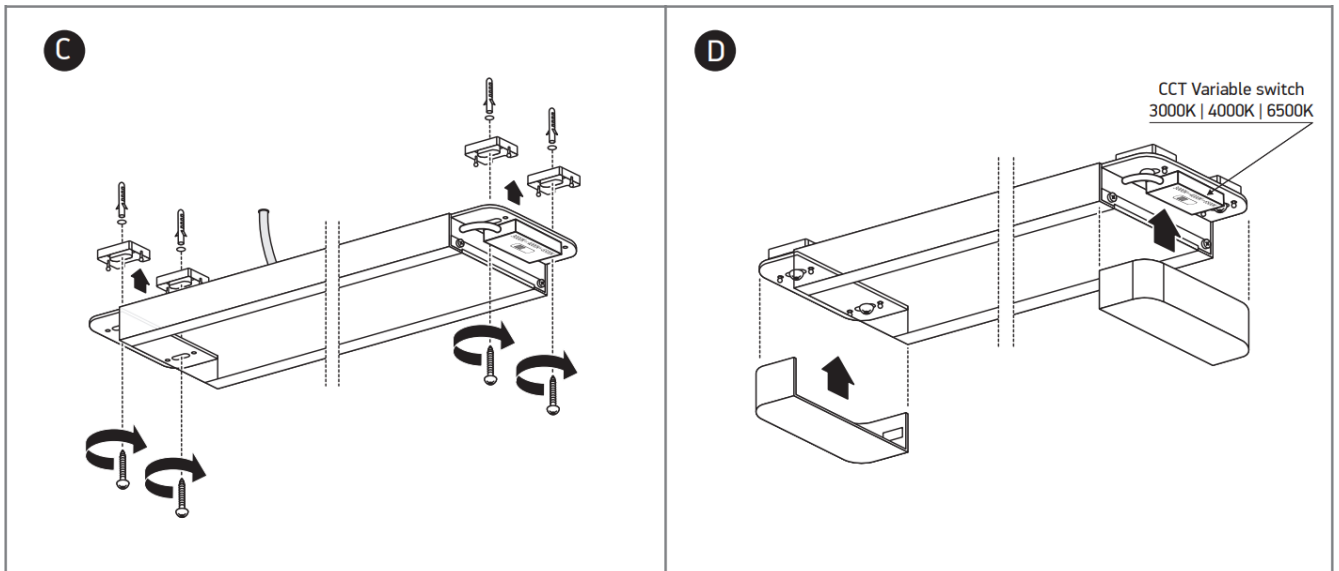


- **Models:** 38225M, 38248M, 38250M
- **Power:** 38225M: 25W, 38248M: 48W, 38250M: 50W
- **Voltage:** 230V
- **LED Type:** SMD 2835
- **IP Rating:** IP20
- **Material:** Aluminium + Plastic
- **Additional:** Complete with driver

Installation

1. Ensure the product is installed properly before connecting to electricity.





2. Avoid covering the fitting to prevent overheating.
3. Installation and maintenance should be performed by a professional electrician.

CCT Variable Switch

The product features a variable switch for selecting different colour temperatures:

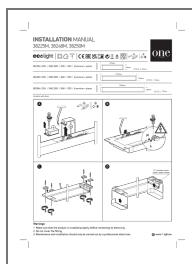
- 3000K – Warm White
- 4000K – Natural White
- 6500K – Cool White

Complete with driver

Warnings

1. Make sure that the product is installed properly before connecting to electricity.
2. Do not cover the fitting.
3. Maintenance and installation should only be carried out by a professional electrician.

Documents / Resources



[one LIGHT 38225M LED Linear Range](#) [pdf] Instruction Manual
38225M LED Linear Range, 38225M, LED Linear Range, Linear Range

References

- [User Manual](#)

[Manuals+](#), [Privacy Policy](#)

This website is an independent publication and is neither affiliated with nor endorsed by any of the trademark owners. The "Bluetooth®" word mark and logos are registered trademarks owned by Bluetooth SIG, Inc. The "Wi-Fi®" word mark and logos are registered trademarks owned by the Wi-Fi Alliance. Any use of these marks on this website does not imply any affiliation with or endorsement.