



One LIGHT 38161A 50W UGR19 Linear System Instruction Manual

[Home](#) » [one LIGHT](#) » One LIGHT 38161A 50W UGR19 Linear System Instruction Manual 

One LIGHT 38161A 50W UGR19 Linear System



Contents

- 1 FEATURES
- 2 A SURFACE INSTALLATION
 - 2.1 B SUSPENDED INSTALLATION
- 3 C CONNECTION
- 4 Warnings
- 5 Documents / Resources
- 6 Related Posts

FEATURES

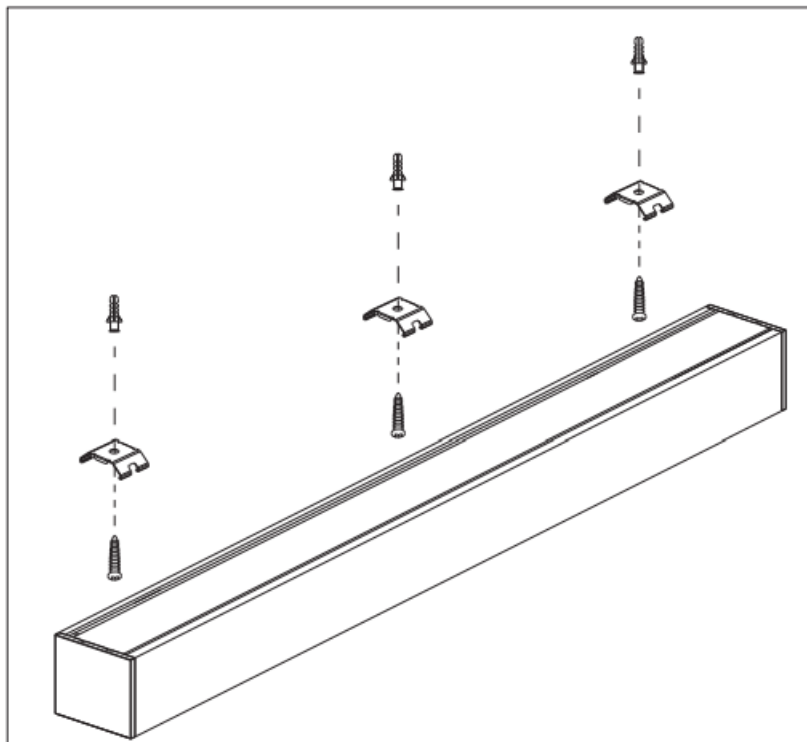


230V | SMD 2835 | 50W | IP20 | Aluminium

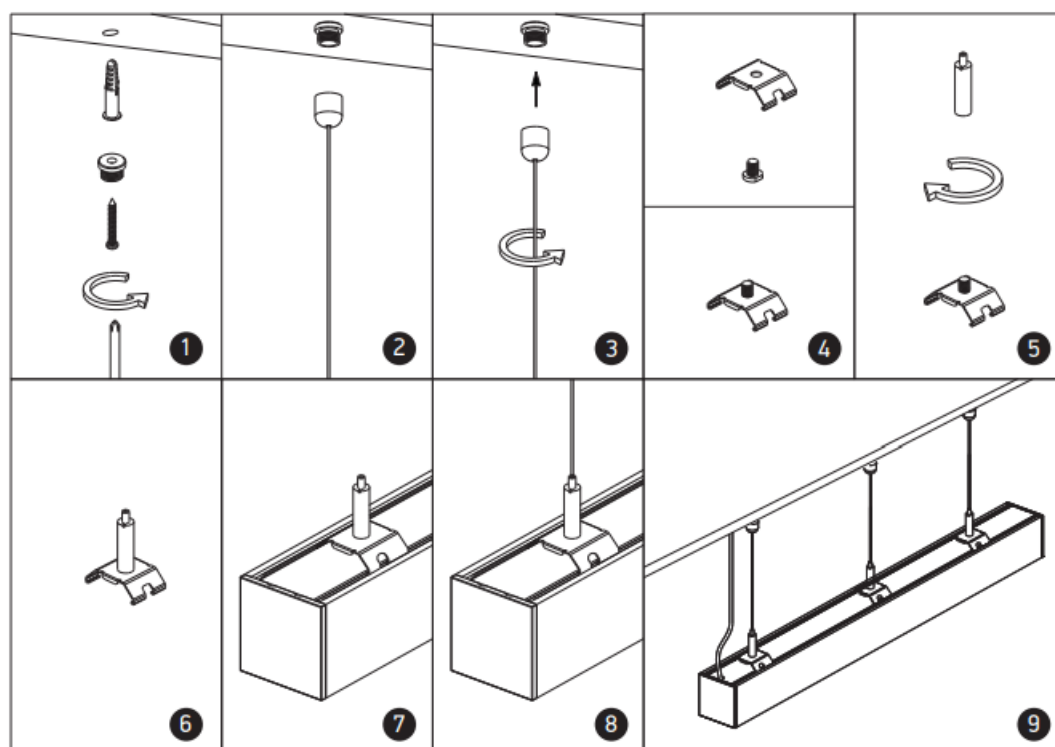
Complete with 1250mA driver / Can be connected in line. Optional suspension kit 050170.



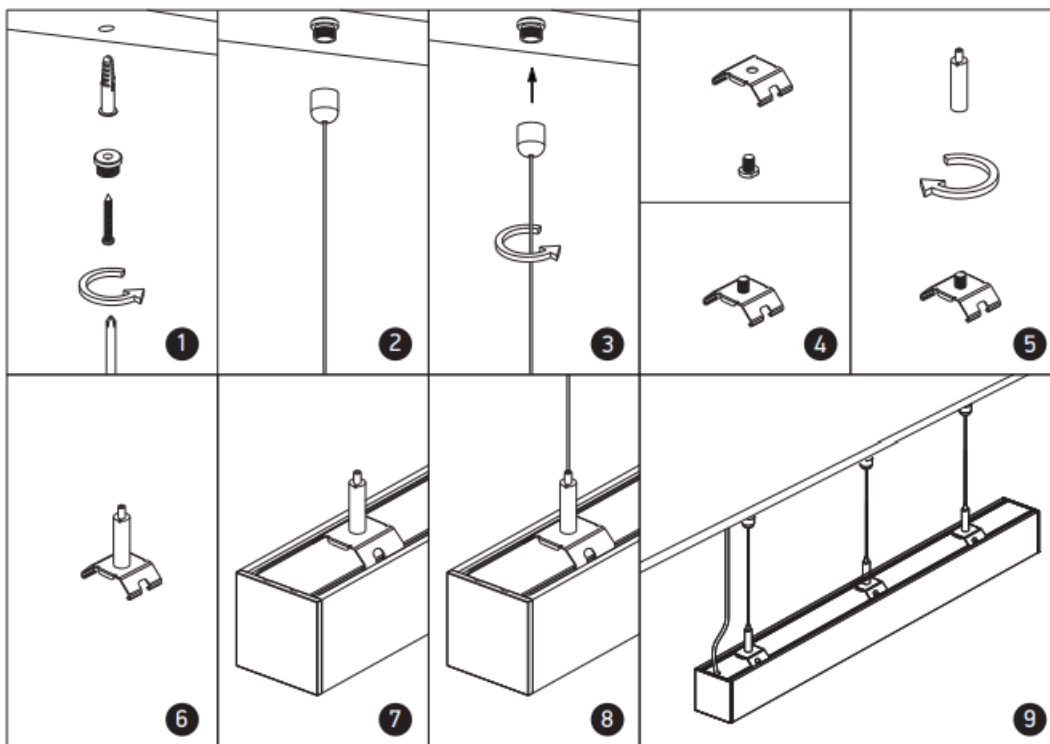
A SURFACE INSTALLATION



B SUSPENDED INSTALLATION



C CONNECTION



Warnings

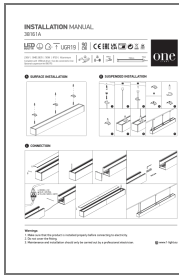
1. Make sure that the product is installed properly before connecting to electricity.
2. Do not cover the fitting.
3. Maintenance and installation should only be carried out by a professional electrician.



www.10-light.eu



Documents / Resources



[One LIGHT 38161A 50W UGR19 Linear System](#) [pdf] Instruction Manual
38161A 50W UGR19 Linear System, 38161A, 50W UGR19 Linear System, UGR19 Linear System, Linear System