

one
LIGHT

**38151A Power
Variable 50W Linear
System**



one LIGHT 38151A Power Variable 50W Linear System Owner's Manual

[Home](#) » [one LIGHT](#) » one LIGHT 38151A Power Variable 50W Linear System Owner's Manual 

Contents

- [1 one LIGHT 38151A Power Variable 50W Linear System](#)
- [2 Specifications](#)
- [3 Electrical Characteristics](#)
- [4 Packing Info](#)
- [5 Product Usage Instructions](#)
- [6 Downloads](#)
- [7 Dimensions](#)
- [8 Gallery](#)
- [9 Accessories](#)
- [10 Related items](#)
- [11 Electrical Characteristics](#)
- [12 Certification & Warranty](#)
- [13 FAQs](#)
- [14 Documents / Resources](#)
 - [14.1 References](#)
- [15 Related Posts](#)

one
LIGHT

one LIGHT 38151A Power Variable 50W Linear System



Specifications

| Item Group | Family | Order Code | Colour | Material | Shape | Length | Width | Height | Surface | Ceiling | Suspended Ceiling | Indoor | Adjustable |
|--------------------|------------------|-------------|-----------------|-------------|--------|--------|-------|--------|---------|---------|-------------------|--------|------------|
| New 2025 Edition 2 | Office & Kitchen | 38151 A/B/V | Black Aluminium | Rectangular | 1500mm | 70mm | 35mm | Yes | Yes | Yes | No | | |

Electrical Characteristics

- **Gear:** Built In
- **Fitting + Driver:** Input Voltage 220-240V, 50Hz/60Hz, Safety Class II, Power(Watts) 30W-40W-50W, IP Rating IP20
- **Light Source:** LED built in, not dimmable, Cable Length 300cm, F Mark Constant Current, IP20, LED built in SMD
- **Led Driver:** Input Voltage 220-240V, Dimmable Yes, IP20, LED built in No, Protection Class I
- **Illumination Data:** Colour Temperature 3000K-4000K-5000K, Lumen Output 4250lm (50W), Light Efficiency 85lm/W, CRI 90, UGR 19

Packing Info

- Pcs/Carton: 9

Product Usage Instructions

1. Ensure the power variable driver is connected correctly to the light fixture.
2. Mount the linear system with diffuser either on the surface or suspend it according to your preference.
3. Make sure the installation complies with standard EN60598-1 and any other specific standards in your region.
4. Turn on the power and enjoy the illumination provided by the LED light source.

- CCT and Power variable 50W UGR19 Linear system with diffuser for surface or suspended installation, ideal for offices.
- Complete with power variable driver.
- Complies with standard EN60598-1 and any other specific standards.

Downloads



Dimensions



Gallery



Accessories

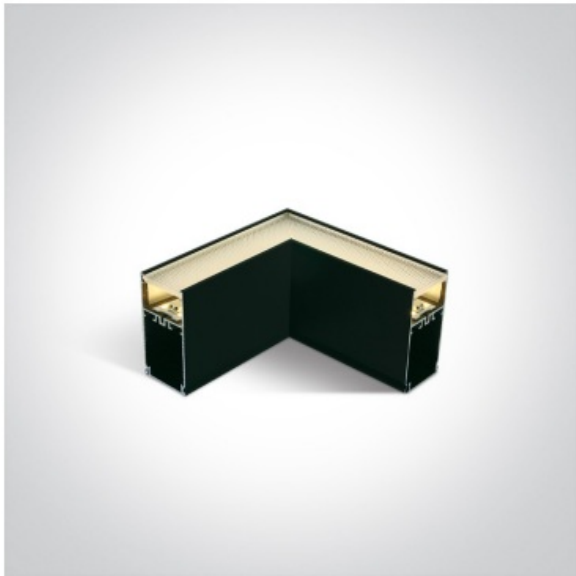


050170



050170C/B

Related items



050170D/B/V





38150E/B

Physical Specification

- Item Group New 2025 Edition 2
- Family Office & Kitchen
- Order Code 38151A/B/V
- Colour Black
- Material Aluminium
- Shape Rectangular
- Length 1500mm
- Width 70mm
- Height 35mm
- Surface Ceiling Yes
- Suspended Ceiling Yes
- Indoor Yes
- Adjustable No

Electrical Characteristics

- Gear Built In
- Fitting + Driver
- Input Voltage 220-240V
- 50 Hz Yes
- 60 Hz Yes
- Safety Class 
- Power(Watts) 30W-40W-50W
- IP Rating IP20
- Light Source LED built in

- Dimmable No
- Cable Length 300cm
- F Mark 


Fitting

- Input Type Constant Current
- IP Rating IP20
- Light Source LED built in
- LED Type SMD

Gear

- Gear Type Led Driver
- Input Voltage 220-240V
- 50 Hz Yes
- 60 Hz Yes
- IP Rating IP20
- Dimmable No
- Protection 0

Illumination Data

- Colour Temperature 3000K-4000K-5000K
- Lumen Output 4250lm (50W)
- Light Efficiency 85lm/W
- CRI 90
- Illumination Diagram 
- UGR 19

Packing Info

- Pcs/Carton 9

Certification & Warranty

- Warranty 3 Years
- Weee Directive Yes

FAQs

Q: Is the light source dimmable?

A: No, the light source is not dimmable.


Q: What is the warranty period for this product?

A: The product comes with a warranty of 3 years.

Q: Does the product comply with the WEEE Directive?

A: Yes, the product complies with the WEEE Directive.

Documents / Resources

| | |
|---|---|
|  | <p>one LIGHT 38151A Power Variable 50W Linear System [pdf] Owner's Manual 38151A, 38151B, 38151V, 38151A Power Variable 50W Linear System, 38151A, Power Variable 50W Linear System, Variable 50W Linear System, 50W Linear System, Linear System, System</p> |
|---|---|

References

- [User Manual](#)

[Manuals+](#), [Privacy Policy](#)

This website is an independent publication and is neither affiliated with nor endorsed by any of the trademark owners. The "Bluetooth®" word mark and logos are registered trademarks owned by Bluetooth SIG, Inc. The "Wi-Fi®" word mark and logos are registered trademarks owned by the Wi-Fi Alliance. Any use of these marks on this website does not imply any affiliation with or endorsement.