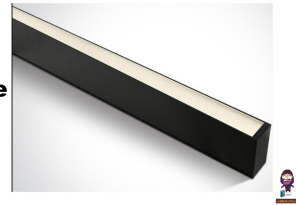


**one**

**38150A**  
**Power Variable**  
**40W**  
**Linear system**



# one LIGHT 38150A Power Variable 40W Linear system Instructions

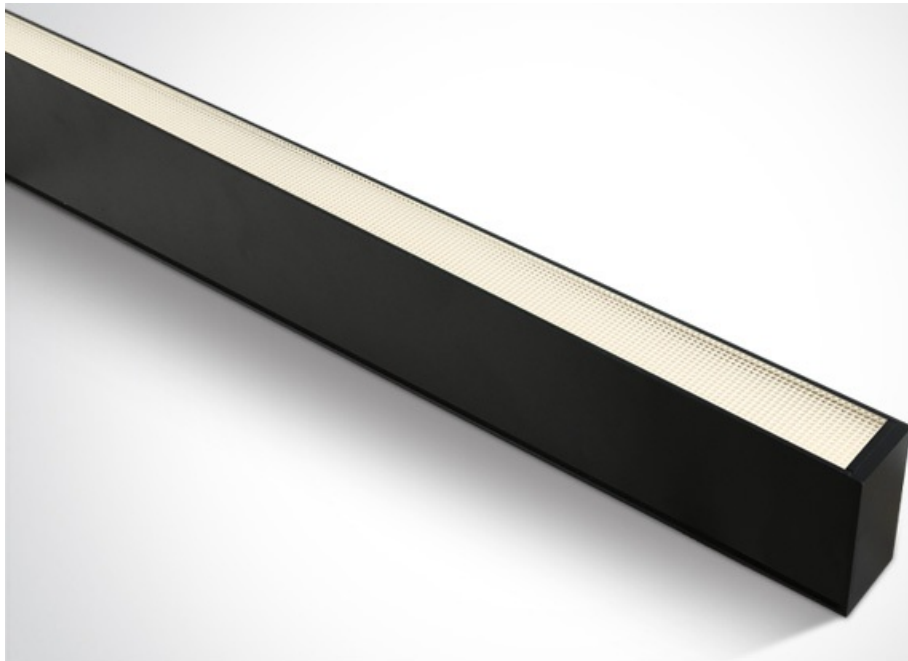
[Home](#) » [one LIGHT](#) » one LIGHT 38150A Power Variable 40W Linear system Instructions 

## Contents

- [1 one LIGHT 38150A Power Variable 40W Linear system](#)
- [2 Product Information](#)
- [3 Product Usage Instructions](#)
- [4 Features](#)
- [5 Downloads](#)
- [6 Dimensions](#)
- [7 Gallery](#)
- [8 Accessories](#)
- [9 Related items](#)
- [10 Physical Specification](#)
- [11 FAQ's](#)
- [12 Documents / Resources](#)
  - [12.1 References](#)



**one LIGHT 38150A Power Variable 40W Linear system**



## Product Information

### Specifications

#### Physical Specification:

- Item Group: New 2025 Edition 2 Office & Kitchen 38150A/B/V
- Colour: Black
- Material: Aluminium
- Shape: Rectangular
- Length: 1200mm
- Width: 35mm
- Height: 70mm
- Surface: Yes
- Ceiling: Yes
- Suspended Ceiling: Yes
- Indoor: No
- Adjustable: No

#### Electrical Characteristics:

- Gear: Built In
- Fitting + Driver Input Voltage: 220-240V
- 50 Hz, 60 Hz
- Safety Class: IP20
- Power(Watts): 20W-30W-40W
- IP Rating: IP20

#### Light Source:

- Dimmable: No
- Cable Length: 300cm
- F Mark: Constant Current
- Fitting Input Type: LED built in SMD
- IP Rating: IP20
- Light Source: LED Type

#### **Illumination Data:**

- Colour Temperature: 3000K-4000K-5000K
- Lumen Output: 3400lm (40W)
- Light Efficiency: 85lm/W
- CRI: 90
- Illumination Diagram UGR: 19

#### **Product Usage Instructions**

##### **Installation:**

1. Determine whether to install the light for surface or suspended installation.
2. Ensure the power variable driver is included for installation.
3. Follow standard EN60598-1 and any other specific standards for installation guidelines.

##### **Electrical Connection:**

1. Connect the fitting and driver to an input voltage of 220-240V.
2. Ensure the safety class IP20 is maintained during electrical connection.

##### **Light Adjustment:**

1. The light has power variable settings of 20W, 30W, and 40W for adjusting brightness.
2. The colour temperature can be adjusted between 3000K, 4000K, and 5000K.

#### **Features**

##### **New 2025 Edition 2>Office & Kitchen**

##### **38150A/B/V**

- CCT and Power variable 40W UGR19 Linear system with diffuser for surface or suspended installation, ideal for offices.
- Complete with power variable driver
- Complies with standard EN60598-1 and any other specific standards.



## Downloads



## Dimensions



## Gallery



## Accessories

- 050170



- 050170C/B



## Related items

- 050170D/B/V



- 38150E/B



## Physical Specification

- Item Group New 2025 Edition 2
- Family Office & Kitchen
- Order Code 38150A/B/V
- Colour Black
- Material Aluminium
- Shape Rectangular
- Length 1200mm
- Width 35mm
- Height 70mm
- Surface Ceiling Yes
- Suspended Ceiling Yes
- Indoor Yes
- Adjustable No

## Electrical Characteristics

- Gear Built In


## Fitting + Driver

- Input Voltage 220-240V
- 50 Hz Yes
- 60 Hz Yes

- Safety Class



- Power(Watts) 20W-30W-40W
- IP Rating IP20

- Light Source LED built in
- Dimmable No
- Cable Length 300cm
- F Mark 

### Fitting

- Input Type Constant Current
- IP Rating IP20
- Light Source LED built in
- LED Type SMD

### Gear

- Gear Type Led Driver
- Input Voltage 220-240V
- 50 Hz Yes
- 60 Hz Yes
- IP Rating IP20
- Dimmable No
- Protection 0

### Illumination Data

- Colour Temperature 3000K-4000K-5000K
- Lumen Output 3400lm (40W)
- Light Efficiency 85lm/W
- CRI 90

- Illumination Diagram 

- UGR 19

### Packing Info

- Pcs/Carton 12

### Certification & Warranty

- Warranty 3 Years
- Weee Directive Yes

### FAQ's

**Q: Is the LED dimmable?**

**A:** No, the LED is not dimmable in this product version.


**Q: What is the warranty period for this product?**

**A:** The product comes with a warranty of 3 years.

**Q: Does the product comply with the WEEE Directive?**

**A:** Yes, the product complies with the WEEE Directive.

**Documents / Resources**

	<p><a href="#">one LIGHT 38150A Power Variable 40W Linear system</a> [pdf] Instructions 38150A, 38150B, 38150V, 38150A Power Variable 40W Linear system, 38150A, Power Variable 40W Linear system, Variable 40W Linear system, Linear system, system</p>
---	--

**References**

- [User Manual](#)

**Manuals+, Privacy Policy**

This website is an independent publication and is neither affiliated with nor endorsed by any of the trademark owners. The "Bluetooth®" word mark and logos are registered trademarks owned by Bluetooth SIG, Inc. The "Wi-Fi®" word mark and logos are registered trademarks owned by the Wi-Fi Alliance. Any use of these marks on this website does not imply any affiliation with or endorsement.