

One Control LWP Series Junction Box Kit Instruction Manual

[Home](#) » [ONE CONTROL](#) » **One Control LWP Series Junction Box Kit Instruction Manual** 

Contents

- 1 One Control LWP Series Junction Box Kit
- 2 One Control LWP Series Junction Box Kit
- 3 1. Parts Checklist:
- 4 2. Install the jack onto the PCB
- 5 3. Temporary assembly of main PCB
- 6 4. Installing the main PCB
- 7 5. Ground bar
- 8 6. Completion
- 9 Specifications:
- 9.1 Product Usage Instructions
- 9.2 1. Parts Checklist:
- 9.3 2. Install the jack onto the PCB:
- 9.4 3. Temporary assembly of main PCB:
- 9.5 4. Installing the main PCB:
- 9.6 5. Ground bar:
- 10 FAQ
- 10.1 Q: What should I do if I find missing parts?
- 11 Documents / Resources
- 11.1 References
- 12 Related Posts

One Control LWP Series Junction Box Kit

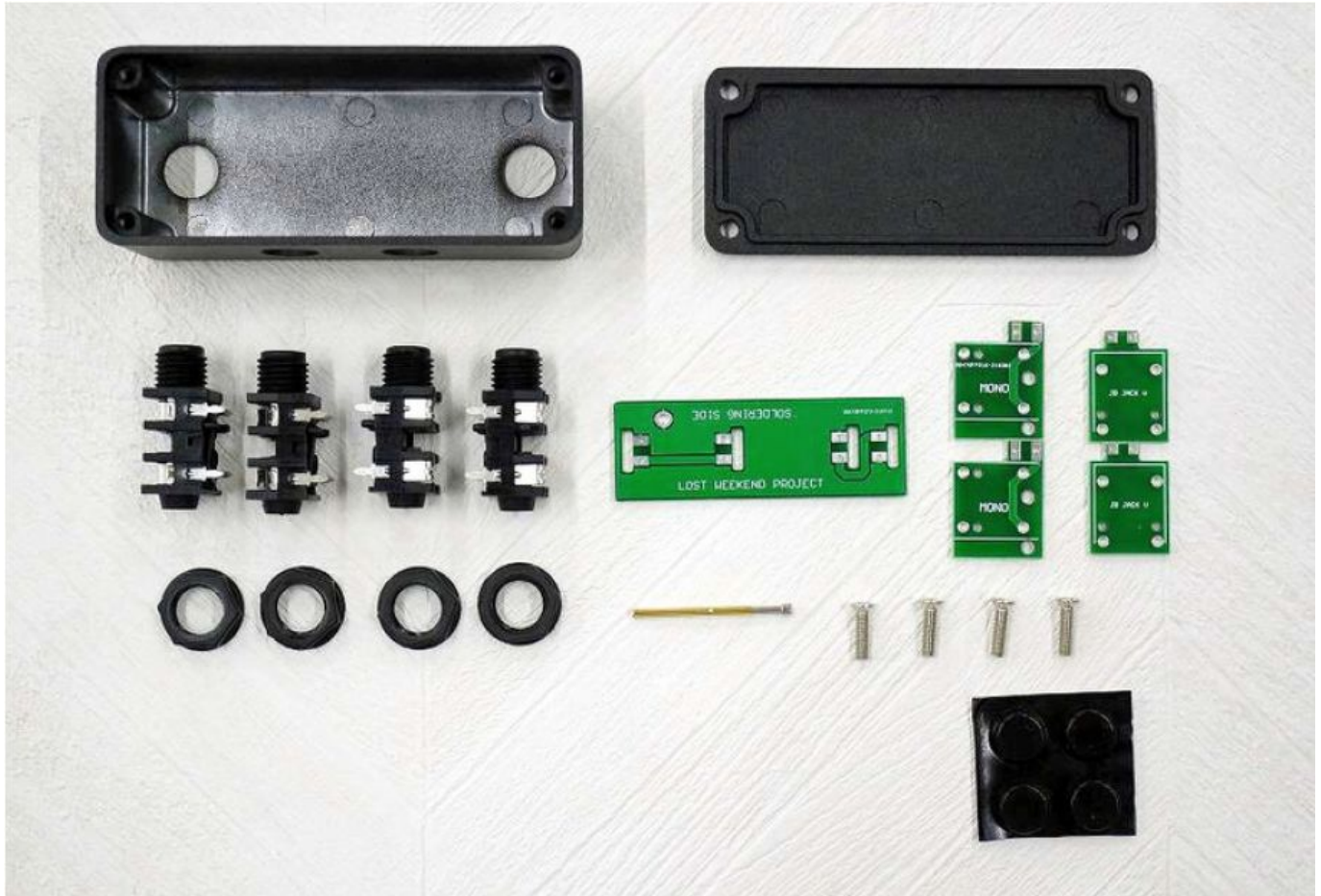
INSTRUCTION MANUAL

One Control LWP Series Junction Box Kit

Thank you for purchasing the One Control LWP Series Junction Box build-it-yourself kit.

Before starting production, please be sure to check the parts list and make sure that there are no missing parts. In the unlikely event that something is missing, please contact the musical instrument store where you purchased it.

1. Parts Checklist:



- 1 x case (pre-drilled)
- 1 x case back cover
- 4 x mono jack
- 4 x nuts (black)
- 1 x Main PCB
- 2 x Jack PCB top side (written as JB JACK V)
- 2 x Jack PCB side (marked as MONO)
- 1 x Ground bar (gold and silver combined bar)
- 4 x back cover screws
- 1 x Rubber feet set

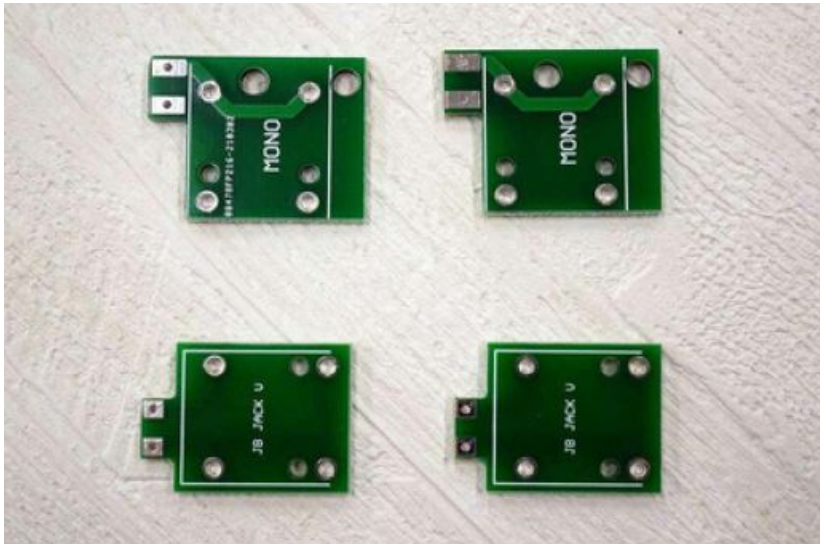
You can start to build the Junction Box Kit after confirming that there are no missing parts.

Once production has begun, we may not be able to provide exchanges or returns. Please make sure that no parts are missing.

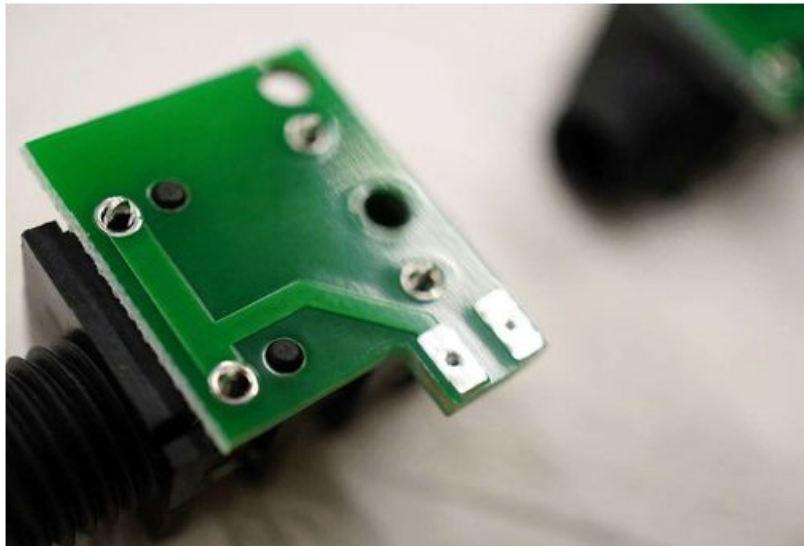
In addition, the following tools are required for production:

- Soldering iron, solder, screwdriver, hexagonal wrench

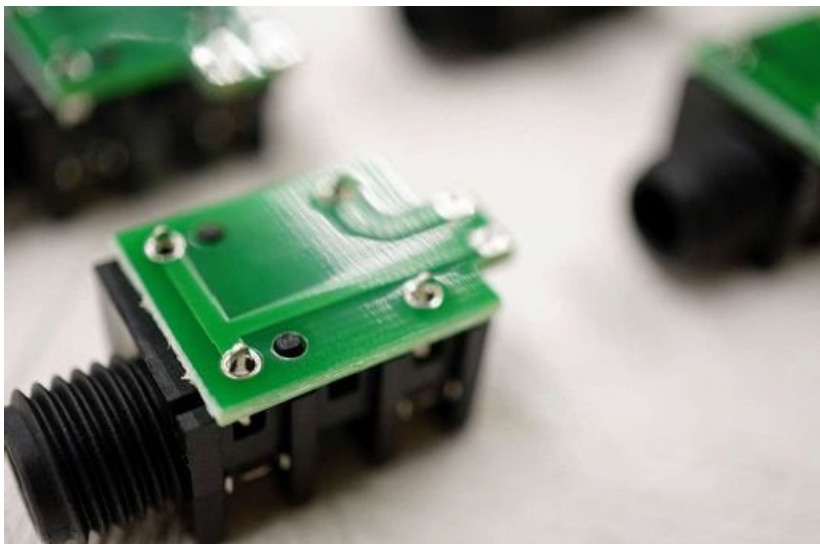
2. Install the jack onto the PCB



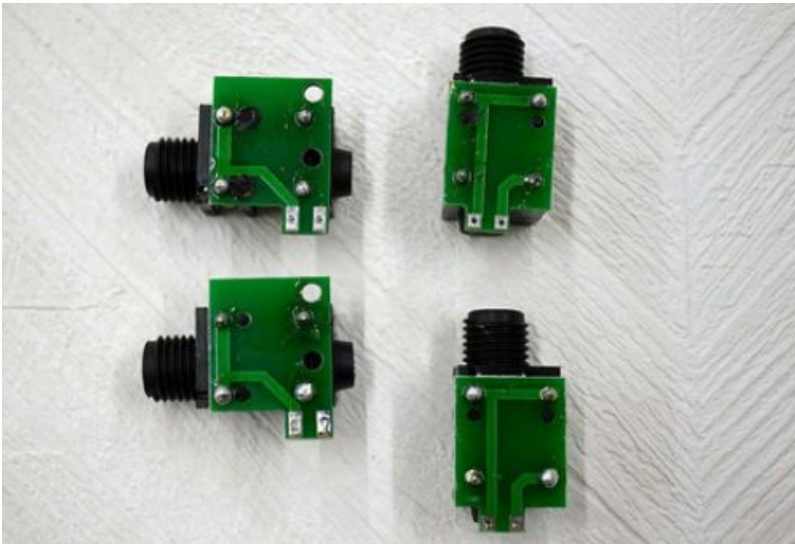
Attach the PCB for the jack to the jack.
Attach the jack to the side with the letters on the board.



In this way, align the protrusion of the jack with the hole on the board and install it. This is a side PCB.



Attach the top jack PCB in the same way, aligning the jack protrusion with the board hole.



Once installed, solder the four terminals on each jack.

3. Temporary assembly of main PCB



First, assemble the top side jack into the case.
At this time, install the board so that it faces inward.



Secure it loosely with a nut. There is no need to tighten it too tightly.



Attach the side jack.



At this time, place the side jack toward you so that the board faces to the left. Align the holes in the main PCB with the protrusions on the four jack boards. Align it so that the side labeled "SOLDERING SIDE" is facing up.



⑤ Fine-tune the angle of the four jacks so that the protrusions on the board fit into the holes in the main PCB. Adjust until it goes all the way in.
Once the jack position is adjusted, firmly tighten the nut while holding the main PCB.

4. Installing the main PCB

Once the main PCB and jack board are firmly seated, solder the joints.



*If the amount of solder is small, the power may not be applied properly. In particular, apply solder to the extent that the solder penetrates into the eyelet of the jack side board.
Also, be careful not to touch the solder of the adjacent terminal when soldering.



At this point, verify that the top and side terminals each have power. It's a bit noisy as the back is left open and there's no case shielding, but that's fine at this point.

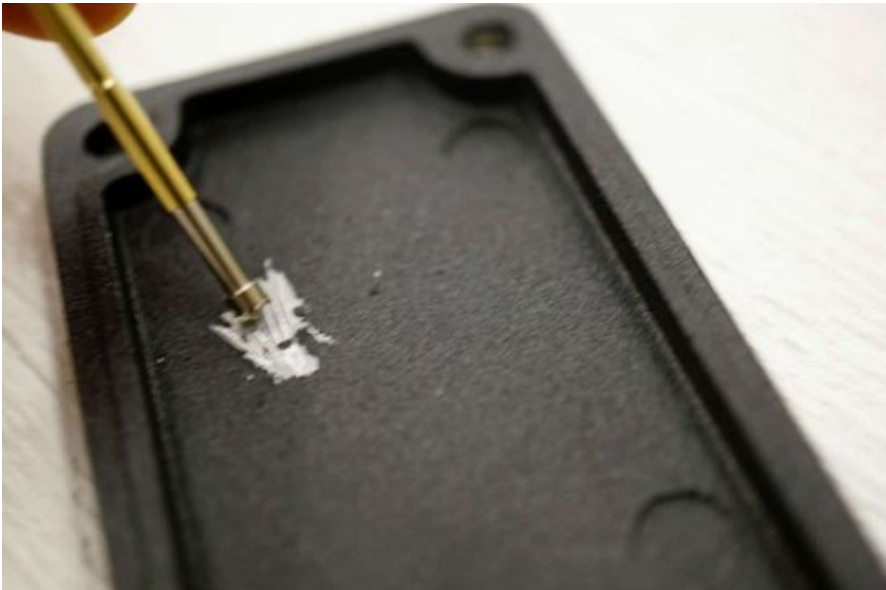
5. Ground bar

Install a ground bar. The ground bar connects the board and case (back cover) and is used when shielding the case. There is no need to install it when you do not want to shield the case, such as when using it as a junction box for speaker cables.

We recommend installing it when using it between a regular guitar and a pedal board.



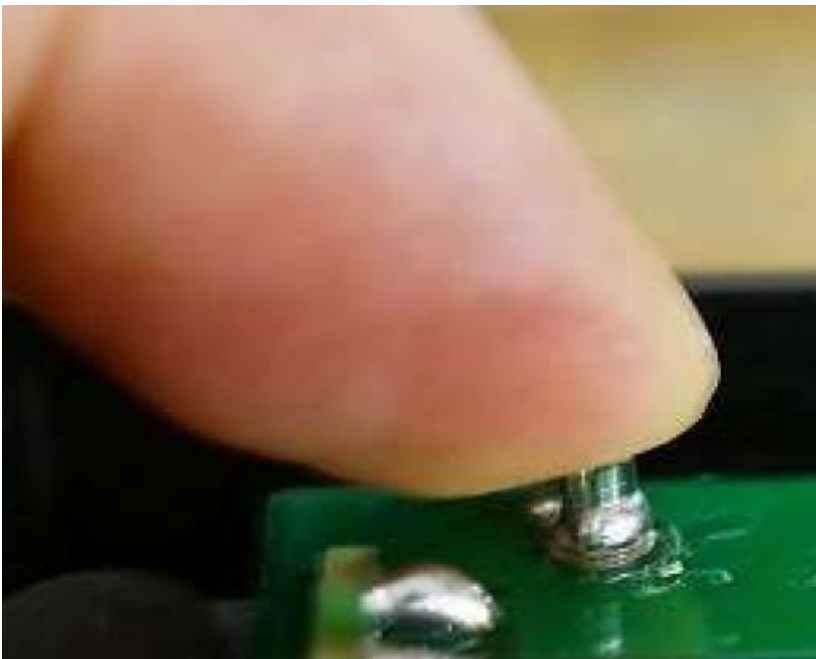
First, thread the ground bar through the hole in the main PCB. Pass the bar until it touches the top of the case, and at that point make sure that the gold part of the bar is sticking out from the PCB. After checking, align the back cover and check where the ground bar is on the back cover.



Slightly peel off the paint on the back cover where the ground bar touches. You can easily peel it off by using the tip of the ground bar, but if you use too much force, the bar will bend, so be careful. There is no problem if you use tools you already have, such as a flathead screwdriver. By removing the paint, the ground bar and case will make efficient contact.



Solder the ground bar. At this time, do not apply solder to the silver bar. If there is too much solder, the solder will flow into the gap between the silver and gold bars and stick, causing the bars to not move. Fix it with a small amount of solder.



After applying the solder, check that the bar moves. If the bar moves when you press it with your fingers from above, there is no problem.



All soldering processes are now complete. Finally, firmly tighten the nuts on each jack, attach the back cover so that the ground bar and the area where the paint was removed match up, and secure with the screws.

6. Completion



The junction box is now complete.

Please attach the rubber feet to the back cover if you like. When fixing to a board with hook-and-loop fasteners, etc., it will be easier to install without using rubber feet.



Specifications:

- Model: One Control LWP Series Junction Box Kit
- Parts Included: Case, case back cover, mono jack, nuts, Main PCB, Jack PCB top side, Jack PCB side, Ground bar, back cover screws, Rubber feet set
- Tools Required: Soldering iron, solder, screwdriver, hexagonal wrench

Product Usage Instructions

1. Parts Checklist:

Before starting production, ensure all parts are present as per the list provided in the manual.

2. Install the jack onto the PCB:

Attach the jack PCB to the jack following the instructions provided in the manual. Solder the terminals on each jack after installation.

3. Temporary assembly of main PCB:

Assemble the top side jack into the case and loosely secure it with a nut. Align and install the side jack. Adjust the angle of the jacks to fit into the main PCB holes. Once aligned, tighten the nuts while holding the main PCB.

4. Installing the main PCB:

Once the main PCB and jack board are seated, solder the joints ensuring proper application of solder for efficient power supply.

Verify power connection on both top and side terminals.

5. Ground bar:

Install the ground bar to connect the board and case for shielding purposes. Thread the ground bar through the hole in the main PCB, ensuring proper alignment with the back cover.

FAQ

Q: What should I do if I find missing parts?

A: In case of missing parts, please contact the musical instrument store where you purchased the kit for assistance.

Documents / Resources



[One Control LWP Series Junction Box Kit](#) [pdf] Instruction Manual
OC-LWP-LWPJB, LWP Series Junction Box Kit, LWP Series, Junction Box Kit, Box Kit, Kit

References

- [User Manual](#)

[Manuals+](#), [Privacy Policy](#)

This website is an independent publication and is neither affiliated with nor endorsed by any of the trademark owners. The "Bluetooth®" word mark and logos are registered trademarks owned by Bluetooth SIG, Inc. The "Wi-Fi®" word mark and logos are registered trademarks owned by the Wi-Fi Alliance. Any use of these marks on this website does not imply any affiliation with or endorsement.