

omtech OMT-4WHEEL 4-Wheel Rotary Axis Attachment Instruction Manual

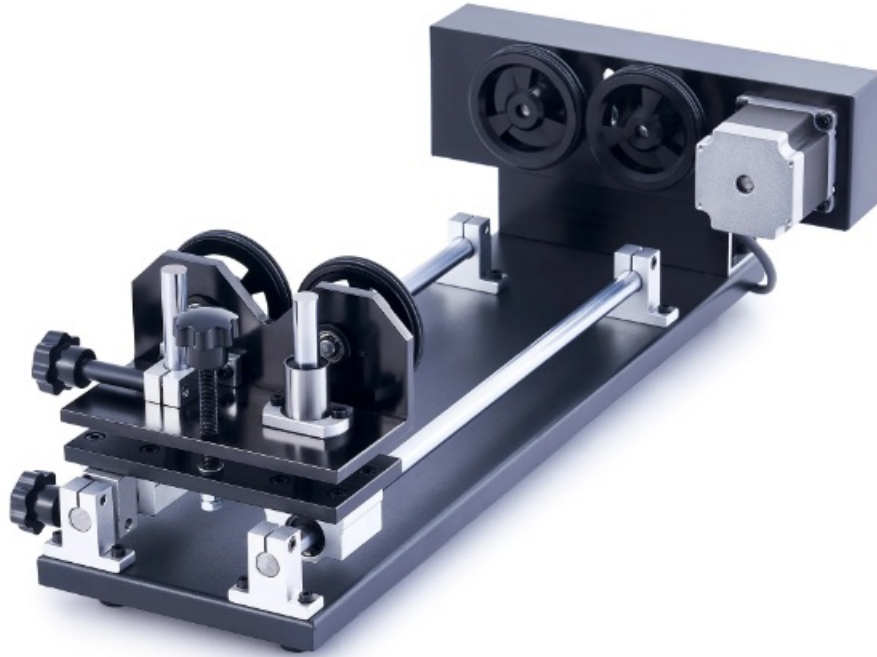
[Home](#) » [omtech](#) » omtech OMT-4WHEEL 4-Wheel Rotary Axis Attachment Instruction Manual 

Contents

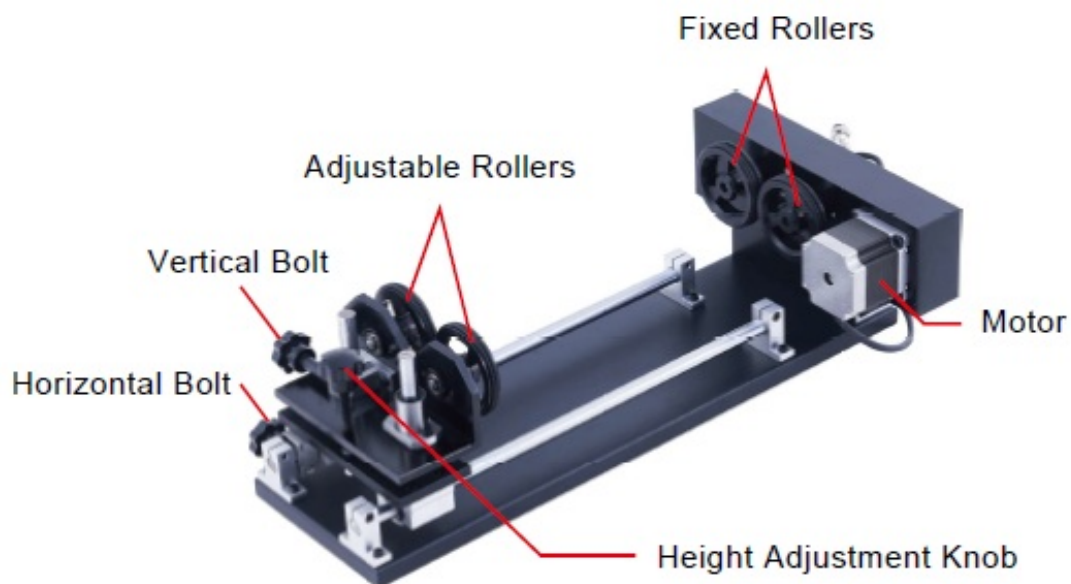
- [1 omtech OMT-4WHEEL 4-Wheel Rotary Axis Attachment](#)
- [2 Overview](#)
- [3 Safety Information](#)
- [4 Installation](#)
- [5 Operation](#)
- [6 Specifications](#)
- [7 Maintenance](#)
- [8 Contact Us](#)
- [9 Documents / Resources](#)
 - [9.1 References](#)
- [10 Related Posts](#)



omtech OMT-4WHEEL 4-Wheel Rotary Axis Attachment



Overview



Safety Information

- Keep this device clean and free of potentially flammable or reflective dust and swarf.
- DO NOT place body parts in or near the engraving path.
- ALWAYS wear appropriate personal protective equipment such as protective eyewear when operating your laser. If this device is being used on an open bed, it is also recommended to secure the worksite or erect protective screens around the laser path to prevent injury to passersby.
- DO NOT use this device with items too wide or long for its rails.
- DO NOT assemble or disassemble this device without proper training.

Installation

1. Place this rotary axis on the work. Ensure that the placement allows the laser head to move along the full range

of its X-axis without obstruction.

2. Connect the rotary device's connection to the Y-axis port inside the engraver or the rotary axis port behind your engraver.

Operation

1. Fix the position of the adjustable rollers by removing the horizontal locking bolt, choosing an appropriate length, and fixing the bolt back into place.
2. Fix the height of the adjustable rollers by removing the vertical locking bolt, turning the height adjustment knob until your desired height is achieved, and then fixing the bolt back into place.
3. Use your engraver's control panel or your engraving software to add your design.

Specifications

Input Voltage	24 V
Rated Power	46 W
Product Dimensions	6×22.8×7 in. (15×58×18 cm)
Distance between Rollers	0.4–15 in. (1–38 cm)
Fixed Roller Height	6 in. (15 cm)
Adjustable Roller Height	6.1–7.9 in. (15.5–20 cm)
Net Weight	19.8 lb. (9 kg)

Maintenance

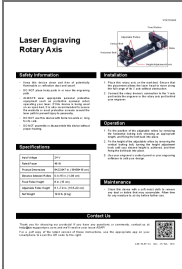
Clean this device with a soft moist cloth to remove any dust or debris that may accumulate. Allow time for any moisture to air dry before further use.

Contact Us

Thank you for choosing our products! If you have any questions or comments, contact us at help@cs-supportpro.com and we'll resolve your issue ASAP. For a .pdf copy of the latest version of these instructions, use the appropriate app on your smartphone to scan the QR code to the right.



Documents / Resources



[omtech OMT-4WHEEL 4-Wheel Rotary Axis Attachment](#) [pdf] Instruction Manual
OMT-4WHEEL, 4-Wheel Rotary Axis Attachment, OMT-4WHEEL 4-Wheel Rotary Axis Attachm
ent

References

-  [Transparent outsourced web hosting tech support |SupportPRO](#)