



OMRON Scale with Bluetooth SC-150 User Guide

[Home](#) » [Omron](#) » OMRON Scale with Bluetooth SC-150 User Guide 

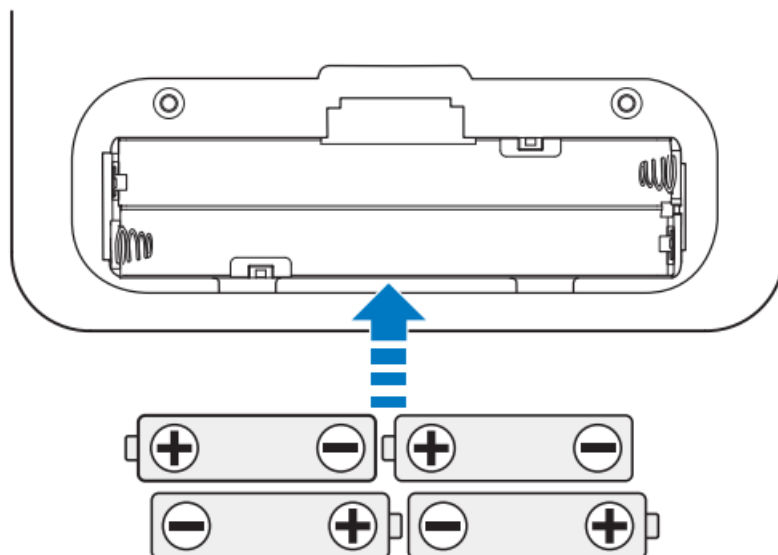
OMRON®

Scale with Bluetooth®
SC-150
Quick Start Guide

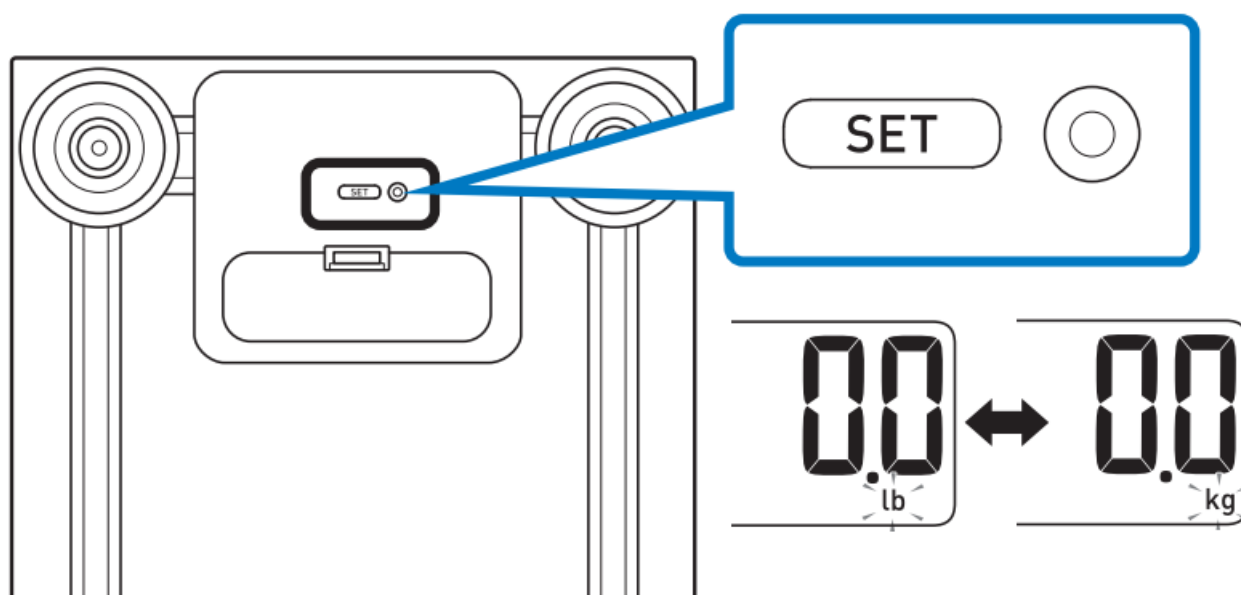
Contents

- 1 Install 4 “AAA” batteries.
- 2 Press the [SET] button to select your weight metric.
- 3 Find the OMRON compatible app
- 4 Place the scale on a hard, flat, and level floor.
- 5 Step onto the scale to start.
- 6 Proper Storage
- 7 Documents / Resources
- 8 Related Posts

Install 4 “AAA” batteries.



Press the [SET] button to select your weight metric.



Find the OMRON compatible app

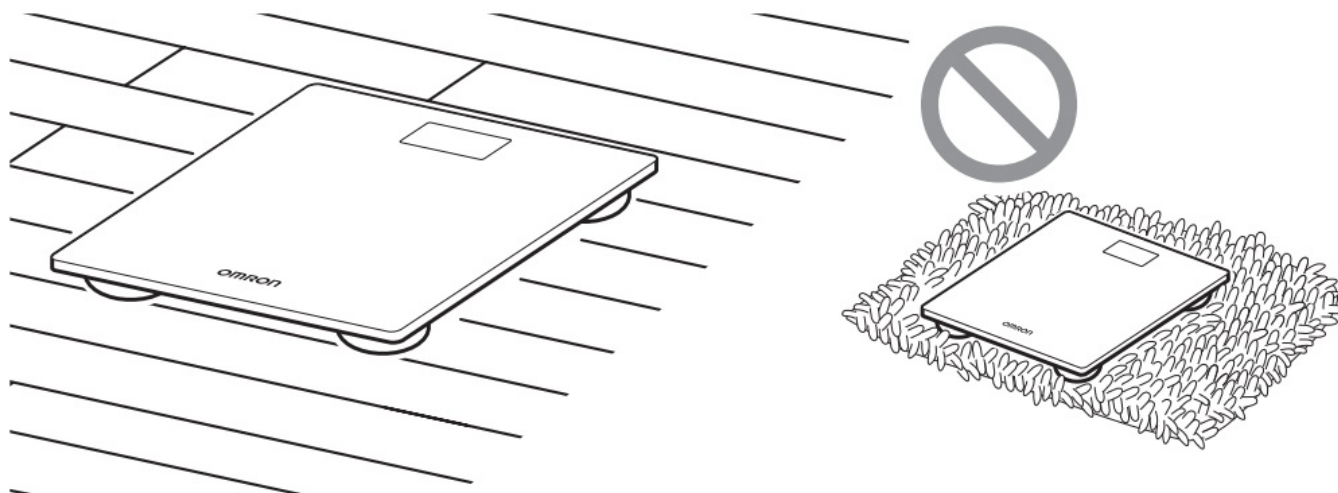
Scan the code below with your smart device camera or visit OmronHealthcare.com/app.



OmronHealthcare.com/app
<http://OmronHealthcare.com/app>

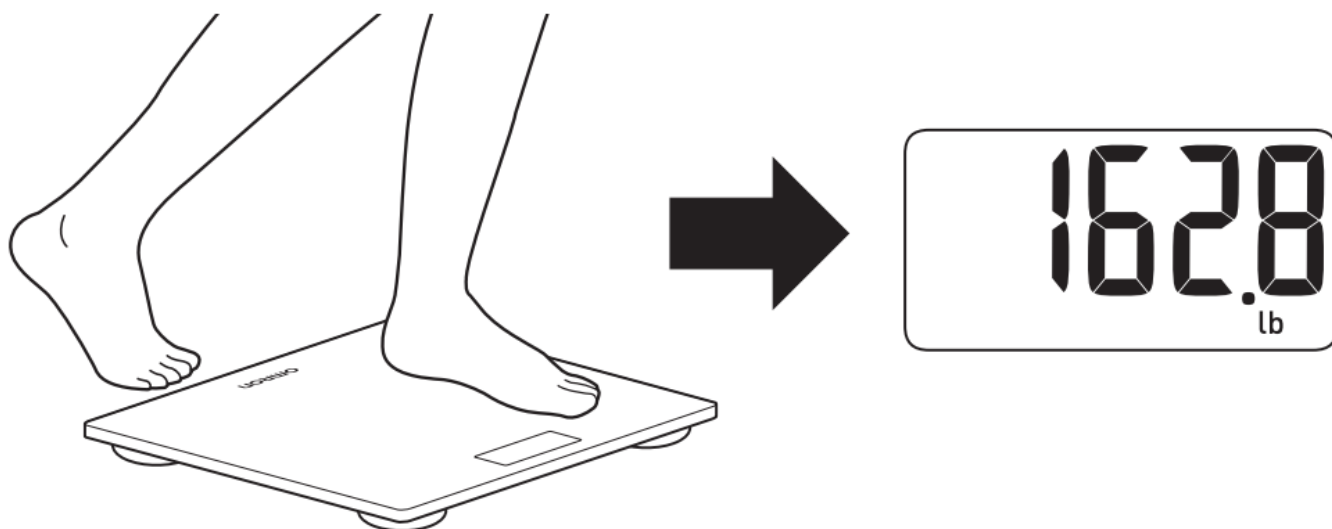
Follow the pairing instructions shown on your smart device.

Place the scale on a hard, flat, and level floor.



Step onto the scale to start.

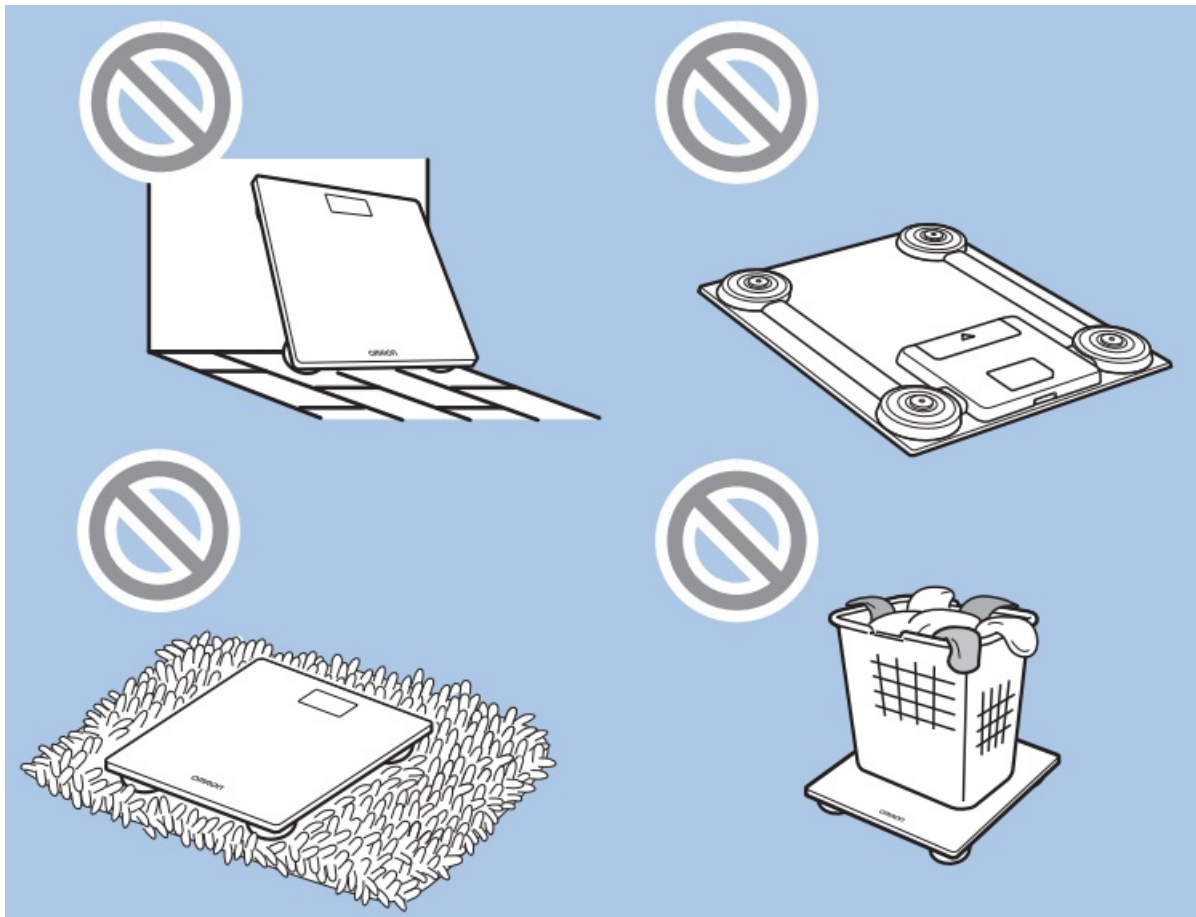
Remain still during the measurement. Your weight flashes when completed.



For more information, refer to the instruction manual.

Proper Storage

The scale recalibrates automatically when it is not in use. **DO NOT** store the scale as shown below.



The **Bluetooth®** word mark and logos are registered trademarks owned by the Bluetooth SIG, Inc., and any use of such marks by OMRON HEALTHCARE Co., Ltd. is under license. Other trademarks and trade names are those of their respective owners.

For Customer Service:
Call toll-free: 1-800-634-4350
[OmronHealthcare.com](https://www.OmronHealthcare.com) / [OmronHealthcare.ca](https://www.OmronHealthcare.ca)

5666071-7A
© 2021 OMRON HEALTHCARE, INC.

Documents / Resources

	<p>OMRON Scale with Bluetooth SC-150 [pdf] User Guide OMRON, Scale, with, Bluetooth, SC-150</p>
--	---