

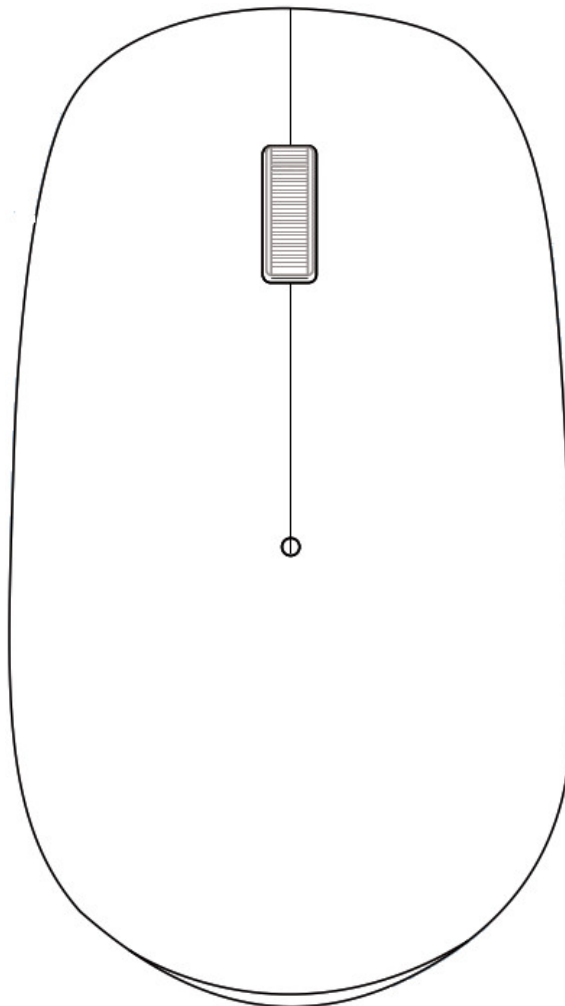


OMOTON M503 Wireless Bluetooth Mouse User Manual

[Home](#) » [OMOTON](#) » OMOTON M503 Wireless Bluetooth Mouse User Manual 

OMOTON

M503 Wireless Bluetooth Mouse
User Manual



Contents

- [1 Specifications](#)
- [2 Package Contents](#)
- [3 Product Overview](#)
- [4 Instructions for Use](#)
- [5 Preparations for the Mouse](#)
- [6 Troubleshooting](#)
- [7 Documents / Resources](#)
- [8 Related Posts](#)

Specifications

Connection Mode: Bluetooth
Bluetooth Edition: BT 5.0
Lifespan: 3 million clicks
Number of Buttons: 3
DPI Levels: 800 / 1200/1600
DPI Operating Range: 33 ft /10 m
Battery: 1 x AA battery
Net Weight: 55g ± 5g
Dimensions:110 x 63 x 23 mm

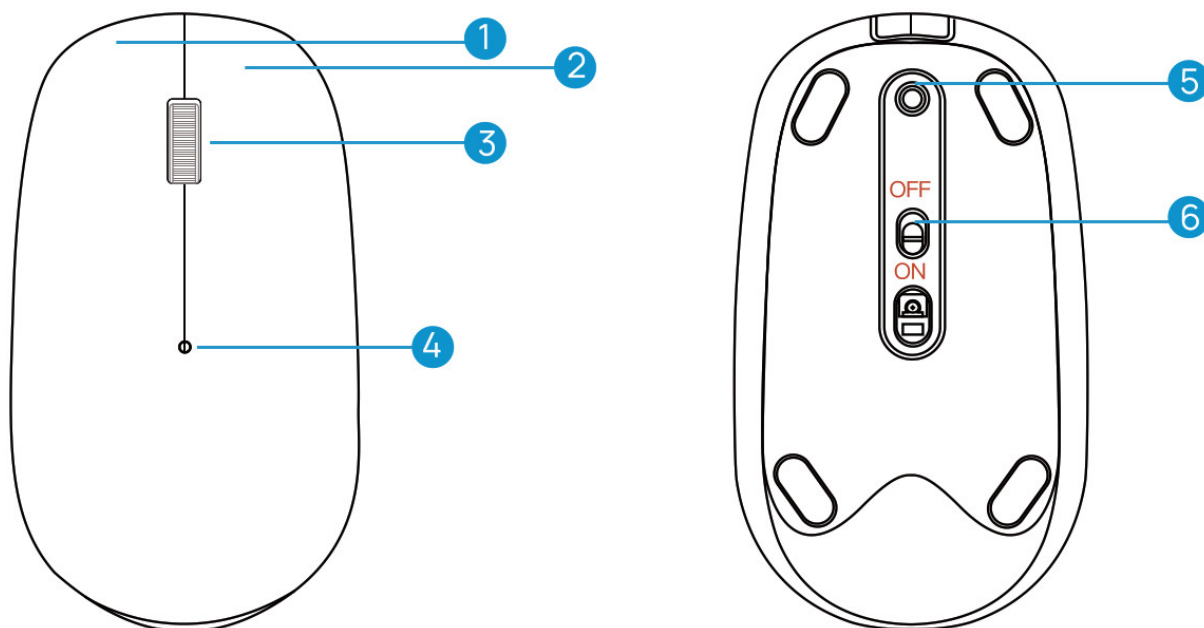
Package Contents

1 x Wireless Mouse
1x User Manual

Compatible Systems

iPadOS 13/ MacOS 1015.5 or newer;
Windows 7/ 8/ 10;
Android system

Product Overview



1. Left Button

2. Right Button
3. Scrolling Wheel
4. The Blue Indicator Light
5. Bluetooth Connection Button
6. ON/OFF Slider

Instructions for Use

Preparations for Pairing with iPad

ATTENTION

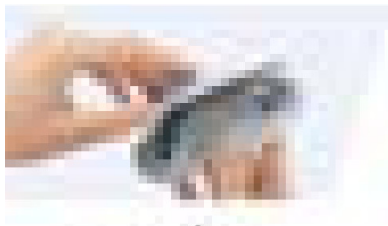
1. Make sure the system of your iPad has been updated to iPadOS13 or newer.
2. Go to Setting-Select Accessibility-Turn on the “Assistive Touch”:
3. Enable the Bluetooth function of your iPad.

Note: The same preparation goes for iPhone Series.



Preparations for the Mouse

BATTERY INSTALLATION STEPS



①

Open the cover



②

Insert the battery



③

Cover the cover

Note: Open the battery cover and install one AA battery.

1. The ON/OFF slider should be in the ON position.
2. Press and hold the Bluetooth connection button for more than 3 seconds until the blue light flashes quickly.
You can start pairing now.
3. Select and click 'BT5.0 Mouse' on your device. The connection is completed.

Cursor Speed Control (DPI)

Press the vertical scrolling and right button for more than 3 seconds at the same time to switch among 800/1200/1600 DPI.

1. First press for toggling to 800 DPI;
2. Second press for toggling to 1200 DPI;
3. Third press for toggling to 1600 DPI.

Power management

Power Saving Mode

The mouse will automatically go to sleep after 30 minutes of inactivity. Press any button and wait 3 seconds to reactivate it.

Replacing Batteries

Lift the battery compartment cover-up. Replace the spent battery with one new AA battery and put the cover back on (Battery not included).

Note: Make sure that the positive (+) and negative (-) terminals are on the correct sides.

Troubleshooting

If you cannot connect the Bluetooth mouse to your device, or if the mouse is not working, please try the following:

1. Make sure your device has Bluetooth and Bluetooth is enabled.
2. Restart the device and try to pair again.
3. Install the new battery and try to pair it again.
4. Cancel your device's Bluetooth connection with other devices, and try to pair again.
5. Check to see if the Bluetooth software has been updated recently. If it hasn't, update the software and try to pair again.
6. Make sure the Bluetooth mouse is within 33ft / 10 m of your device.

Important Safeguards & Precautions

1. SAVE THESE INSTRUCTIONS—They contain essential safety and operating instructions.
2. Please remove the battery when the mouse is not in use for a long period of time.
3. For indoor use only. Do not expose the mouse to direct sunlight or wet conditions.
4. Do not use the mouse if the equipment is damaged.
5. Do not disassemble the product. Disassembly can result in safety hazards.
6. Do not throw or shake the product.

FCC Warning Statement

Changes or modifications not expressly approved by the party responsible for compliance could void the user's authority to operate the equipment. This equipment has been tested and found to comply with the limits for a Class B digital device, pursuant to Part 15 of the FCC Rules. These limits are designed to provide reasonable protection against harmful interference in a residential installation. This equipment generates uses and can radiate radio frequency energy and, if not installed and used in accordance with the instructions, may cause harmful interference to radio communications. However, there is no guarantee that interference will not occur in a particular installation. If this equipment does cause harmful interference to radio or television reception, which can be determined by turning the equipment off and on, the user is encouraged to try to correct the interference by one or more of the following measures:

- Reorient or relocate the receiving antenna.
- Increase the separation between the equipment and receiver.
- Connect the equipment into an outlet on a circuit different from that to which the receiver is connected.
- Consult the dealer or an experienced radio/TV technician for help.

This device complies with part 15 of the FCC Rules. Operation is subject to the following two conditions:

1. This device may not cause harmful interference, and
2. This device must accept any interference received, including interference that may cause undesired operation.

The device has been evaluated to meet general RF exposure requirements.

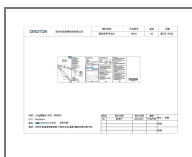
OMOTON

Web: www.omoton.com

E-mail: support@omoton.com

Made in China

Documents / Resources



[OMOTON M503 Wireless Bluetooth Mouse](#) [pdf] User Manual
M508, 2ARMW-M508, 2ARMWM508, M503, Wireless Bluetooth Mouse, M503 Wireless Bluetooth Mouse