



OMOTON KB088 Bluetooth Wireless Keyboard and Mouse User Manual

[Home](#) » [OMOTON](#) » OMOTON KB088 Bluetooth Wireless Keyboard and Mouse User Manual 

Contents

- [1 OMOTON KB088 Bluetooth Wireless Keyboard and Mouse](#)
- [2 Product Information](#)
- [3 Product Usage Instructions](#)
- [4 Keyboard Features](#)
- [5 How to use the stand](#)
- [6 Specifications](#)
- [7 Documents / Resources](#)
 - [7.1 References](#)
- [8 Related Posts](#)

OMOTON

OMOTON KB088 Bluetooth Wireless Keyboard and Mouse



Product Information

- **Product Name:** Wireless Keyboard
- **Model:** KB088
- **Compatibility:** iOS systems only

Package Contents:

- 1 x Wireless Keyboard
- 1 x User Manual

Keyboard Features

- Caps lock indicator
- On-off button
- Fn function indicator
- Battery indicator
- Tab, Caps lock, Shift, Alt, Fn, Control, Option, Command keys
- DPNNBOE, Alt, Option, Delete, Enter/Return, Shift keys
- Sliding stand
- Battery slot

Hot Keys Functions

- Back
- Decrease Brightness
- Increase Brightness
- Search
- Screen-Virtual Shot

- Home
- Last
- Play/Next Song
- Pause Song
- Mute
- Decrease Volume
- Increase Volume
- Lock/Unlock Volume

LED Indicators

- **Caps lock indicator:** Indicates if Caps lock is active.
- **Battery indicator:** Flashes blue when the keyboard is turned on, and flashes red when the battery is low.

Specifications

- **Operating range:** [Operating range information not provided]

Product Usage Instructions

Pairing the Keyboard with Your Device

1. Insert 2 x AAA batteries into the battery slot.
2. Turn on the keyboard using the on-off button. The blue battery indicator light will flash momentarily.
3. Press the Fn + C keys to enable connection mode. The battery indicator will start flashing.
4. Enable your device's Bluetooth in Settings.
5. Find the correct corresponding Bluetooth Keyboard signal and connect to it.
6. When the connection is successful, the indicator will stop flashing.

Using the Stand

1. Slide the stand out until it is fully extended.
2. Open up the stand so its mouth is facing the back of your device.
3. Place your device on the stand.

Note: Do not use excessive force when using the stand to avoid damaging or breaking it.

Energy-saving Mode

Your keyboard will automatically enter sleep mode after ten minutes of inactivity. To continue using the keyboard, press any key and wait 2-3 seconds. The keyboard will reconnect automatically.

Important Warnings

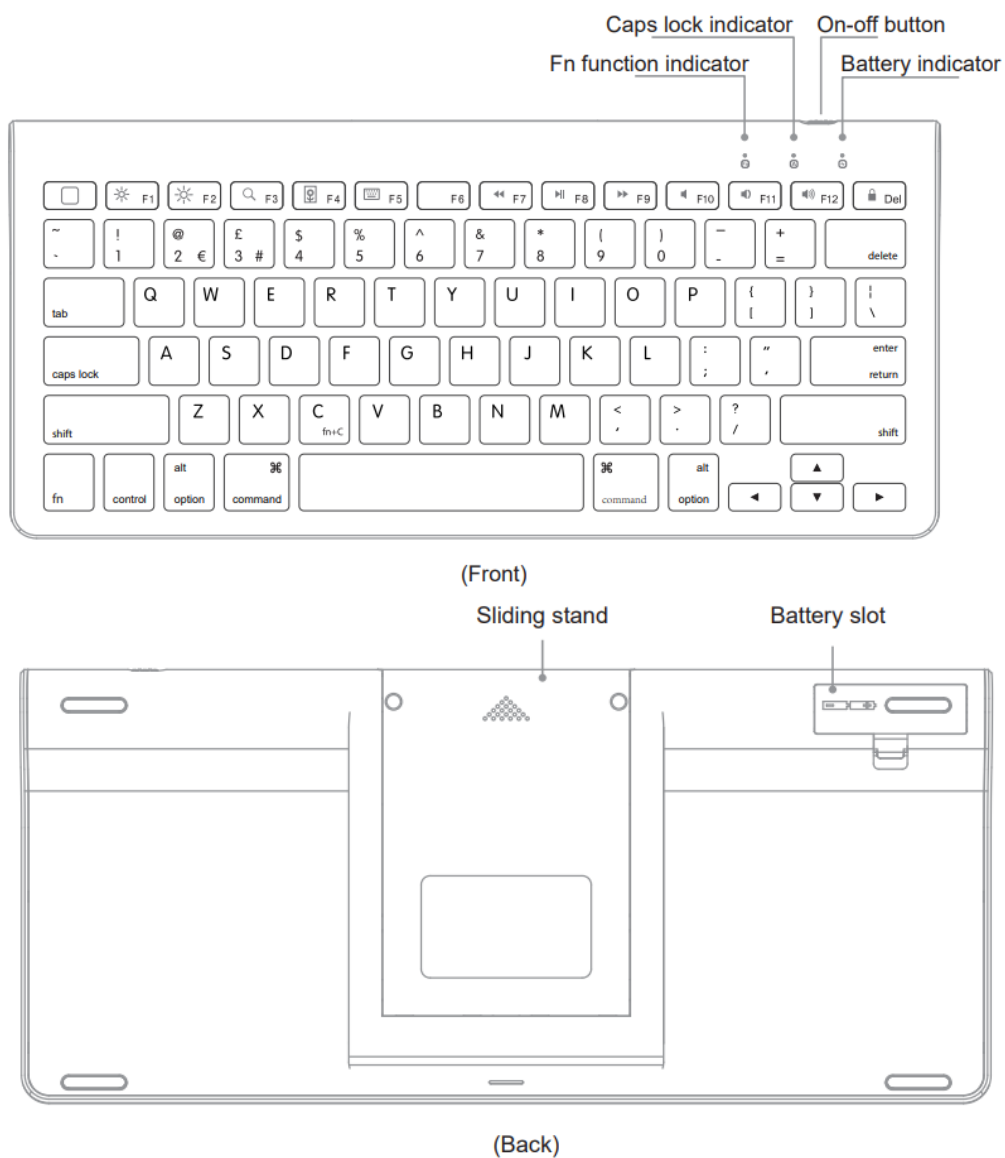
- Keep the device away from sharp objects.
- Keep the device away from radioactive material and microwaves.

- Do not put heavy objects on the device.
- Handle the device with care.
- Keep the device away from oils, fluids, and other chemicals.

Troubleshooting

1. Make sure the keyboard is turned on.
2. Make sure the keyboard is within the operating range.
3. Make sure the battery level is sufficient.
4. Make sure Bluetooth is turned on.
5. Make sure the devices are paired.

Keyboard Features



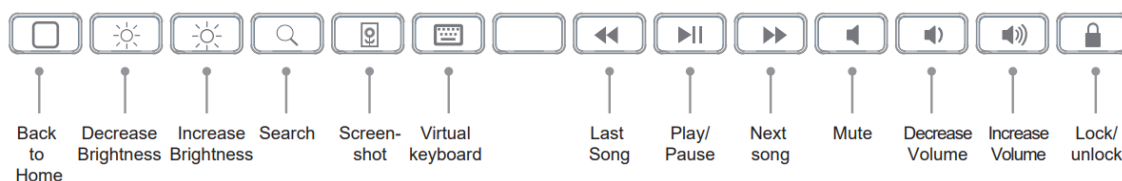
Please read the instructions carefully before using the keyboard.

The package includes:

- 1 x Keyboard

- 1 x User Manual

Hot Keys Functions





Attention: the keyboard is compatible only with iOS systems.

How to pair the keyboard with your device

1. Insert 2 x AAA batteries in the battery insert slot. Turn on the keyboard with the on-off button. The blue, battery indicator light will flash for a few moments. Press the keys Fn + C to enable connection mode. The battery indicator will start flashing.
2. Enable your device's Bluetooth in Settings. Find the correct, corresponding Bluetooth Keyboard signal and connect. When the connection is successful, the indicator will stop flashing.

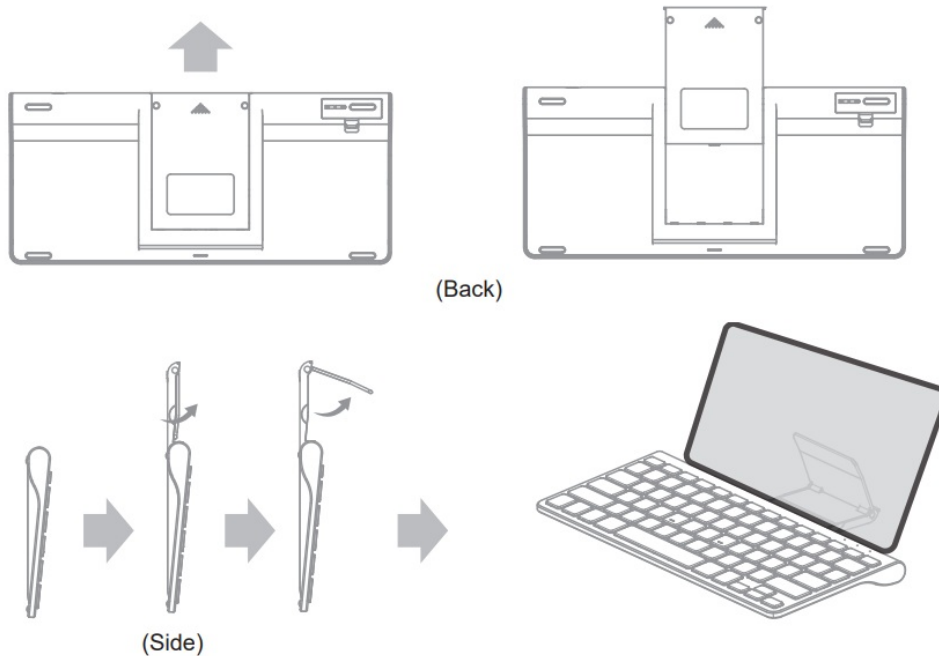
LED Indicators

 Caps lock indicator	When this indicator is on, it means Caps lock is active.
 Battery indicator	<ul style="list-style-type: none"> • When the keyboard is turned on, this indicator will flash • When you press Fn + C, a blue light will start flashing to indicate connectivity. When the battery is low, a red light will flash, indicating that it's time to change the keyboard batteries.

How to use the stand

1. Slide the stand out until it's fully extended.
2. Open up the stand so its mouth is facing the back of your device.
3. Place the device on the stand.

Note: Do not use excessive force when using the stand. This can result in damaging or breaking the stand.



Attention:

1. Keep the stand closed when not in use to avoid damage.
2. Turn off the keyboard when not in use to conserve energy.
3. Never apply liquids directly on the keyboard; clean the keyboard with a cleaning cloth dampened with alcohol or an antibacterial liquid.

Energy-saving mode

After ten minutes of inactivity, your keyboard will automatically enter sleep mode. To continue using the keyboard, press any key and wait for 2-3 seconds. Your keyboard will reconnect automatically.

Warning

1. Keep device away from sharp objects.
2. Keep device away from radioactive material and microwaves.
3. Do not put heavy objects on the device.
4. Handle device with care.
5. Keep device away from oils, fluids, and other chemicals.

Troubleshooting

1. Make sure the keyboard is on.
2. Make sure the keyboard is within the operating range.
3. Make sure the battery level is sufficient.
4. Make sure Bluetooth is turned on.
5. Make sure the devices are paired.

Specifications

1. **Operating range:** <33ft/ 10m

2. **Operation current:** <2.5mA
3. **Voltage:** 3.0V- 4.2V
4. **Working temperature:** -10 to + 55°C
5. **Standby current:** <0.3 mA
6. **Sleep mode current:** <40uA
7. **Keyboard lifespan:** 3 million clicks

Search “OMOTON” on Amazon for more products



Contact us:

Do you have any questions about our products? Please get in touch with us at the email address below. Our team will reply to you within 24 hours. Thank you!


Web: www.omoton.com

E-mail: service@omoton.com

Made in China

1.1413.00.007632

Documents / Resources

	OMOTON KB088 Bluetooth Wireless Keyboard and Mouse [pdf] User Manual KB088 Bluetooth Wireless Keyboard and Mouse, KB088, Bluetooth Wireless Keyboard and Mo use, Wireless Keyboard and Mouse, Keyboard and Mouse, Mouse
---	---

References

- [O Elevating Your Tech | OMOTON](#)
- [User Manual](#)