




**BDT-5.2PRO  
Bluetooth  
Transceiver**



# OMNIRONICS BDT-5.2PRO Bluetooth Transceiver User Guide

[Home](#) » [OMNIRONICS](#) » OMNIRONICS BDT-5.2PRO Bluetooth Transceiver User Guide 

## Contents

- [1 OMNIRONICS BDT-5.2PRO Bluetooth Transceiver](#)
- [2 Product Information](#)
- [3 Product Usage Instructions](#)
- [4 FAQs](#)
- [5 Special features](#)
- [6 Package contents](#)
- [7 Specifications](#)
- [8 Product overview](#)
- [9 Bluetooth transmitter mode](#)
- [10 Bluetooth receiver mode](#)
- [11 Bypass mode](#)
- [12 Safety warnings](#)
- [13 Manufacturer declarations](#)
- [14 Documents / Resources](#)
  - [14.1 References](#)
- [15 Related Posts](#)



**OMNIRONICS BDT-5.2PRO Bluetooth Transceiver**



## Product Information

### Specifications:

- **Bluetooth version:** 5.2
- **Bluetooth frequency:** 2402-2480 MHz
- **Bluetooth name:** BDT-5.2PRO
- **Range TX:** >14 m (line-of-sight), RX: >20-30 m (line-of-sight)
- **Supported codecs TX:** SBC, aptX, aptX Low Latency, aptX HD

## Product Usage Instructions

### Bluetooth Send Mode (TX):

1. Connect the audio adapter to a power source (TV or power supply) using the USB cable and to the TV using one of the audio cables.
2. Power on the device.
3. Pair the device by activating Bluetooth on your smartphone and connecting to the BDT-5.2.

### Bluetooth Receive Mode (RX):

1. Connect the audio adapter to a power source (power supply) and the speaker using one of the audio cables.
2. Turn on the device.
3. Pair the device by activating Bluetooth on your smartphone and connecting to the BDT-5.2.

### Bypass Mode (No Bluetooth):

1. Connect the audio adapter to a power source (TV or power supply) and the TV using one of the audio cables.
2. Power on the device.

### Safety Instructions:

1. This product is not a toy. Keep it away from children. Do not leave packaging materials unattended.
2. Clean the product with a soft, dry cloth without using cleaning agents.

### FAQs

Q: Which Bluetooth codecs are supported by the BDT-5.2PRO?

A: The BDT-5.2PRO supports SBC, aptX, aptX Low Latency, and aptX HD codecs.

Q: What is the Bluetooth range of the BDT-5.2PRO in TX and RX modes?

A: The range is more than 14 meters in line-of-sight for TX mode and more than 20-30 meters in line-of-sight for RX mode.

Q: How do I switch between Bluetooth Send (TX) and Receive (RX) modes?

A: To switch modes, follow the instructions provided in the user manual specific to each mode.

### Welcome

Thank you for choosing the BDT-5.2PRO. This compact Bluetooth audio adapter makes your home entertainment wireless. When used as a Bluetooth transmitter it can stream the sound of your TV to Bluetooth headphones or speakers in sync with the picture via aptX Low Latency technology. When used as a Bluetooth receiver it can be connected to your home audio system for wireless music playback from your Bluetooth-enabled smartphone. The adapter supports dual links and can pair and connect to 2 Bluetooth devices simultaneously. So you can use two headphones or speakers at the same time. The adapter supports aptX HD technology in both modes to bring you high definition wireless audio streaming superior to standard Bluetooth. The practical bypass mode allows you to use wired speakers without having to reconnect audio cables every time.

### Special features

- **Dual-link\***: stream audio to two Bluetooth devices in transmitter mode
- **Multipoint**: pair two Bluetooth audio sources in receiver mode
- **Supported codecs\*\***: SBC, AAC, aptX, aptX low latency, aptX HD
- Bypass mode for wired audio output

- **Flexible audio connections:** works with any device with optical, RCA, or AUX connector
- 1.8" LC display and big rotary knob for easy operation
- Music control in receiver mode: play/pause and volume
- Audio input/output via 3.5 mm jack and optical Toslink jacks
- Bluetooth version 5.2 allows for fast and stable connections
- Long range of up to 20 m

As there are different Bluetooth chipsets incorporated into your devices, it is possible that your headset or speaker does not support dual link. / \*\*To enjoy the advantages of aptX HD or aptX LL your Bluetooth device must support this technology as well.

## Package contents



Audio adapter



Optical audio cable



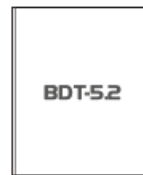
Audio cable (3.5 mm)



Audio cable (3.5 mm/RCA)



USB-C power cable



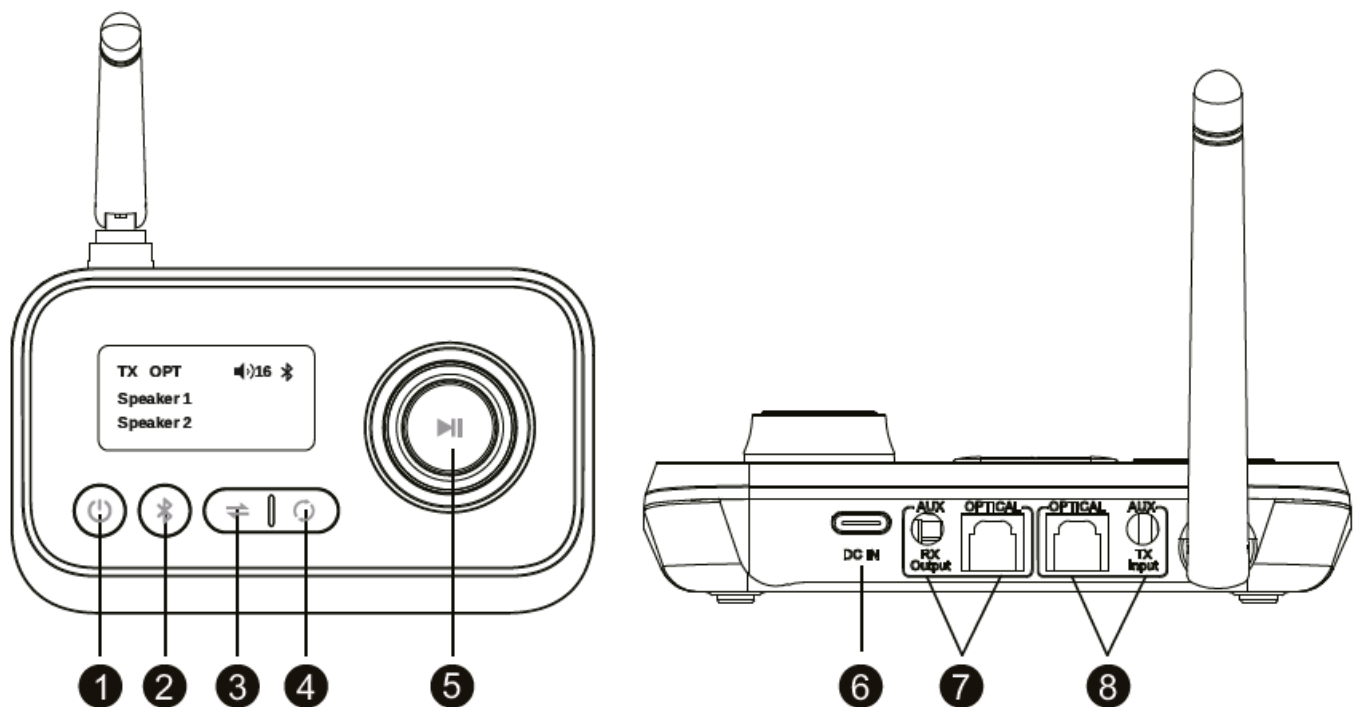
Product guide

## Specifications

- **Bluetooth version:** 5.2
- **Bluetooth frequency:** 2402-2480 MHz
- **Bluetooth name:** BDT-5.2PRO
- **Range TX:** >14 m (line-of-sight), RX: >20-30 m (line-of-sight)
- **Supported codecs TX:**
  - SBC, aptX, aptX Low Latency, aptX HD
  - RX: SBC, AAC, aptX, aptX HD
- **Dual-link:** stream to 2 devices
- **Multi-point:** pair 2 audio sources
- **Input/output:** AUX: 3.5 mm jack; OPT: digital, optical Toslink
- **Display:** 29 x 46 x 1.7 mm
- **Power supply:** 5 V DC ~500 mA via USB-C port
- **Battery/microphone:** no
- **Dimensions, weight:** 112 x 84 x 33 mm, 120 g

Subject to change.

## Product overview



1. Power on/off
2. Wireless pairing/re-pairing
3. Mode switch(TX / RX / BYPASS)
4. Search and pair Bluetooth device (TX mode)
5. Multi-function button RX: pause / volume +/-, TX: up / down / confirm
6. USB-C power input
7. Output (RX mode)
8. Input (TX mode)

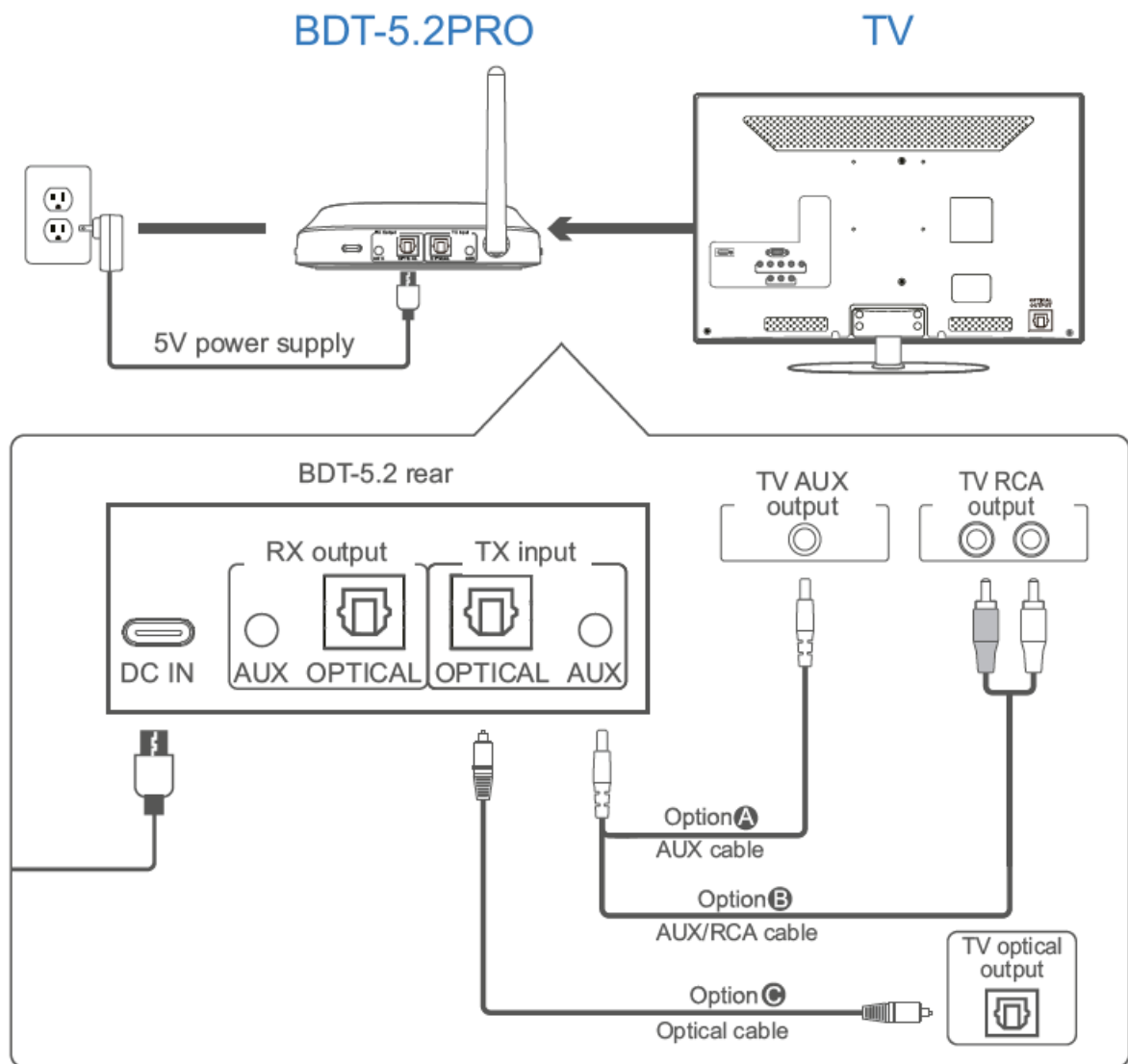
### Note:

Optical mode (OPT) is the default audio mode. The device switches to AUX mode as soon as an AUX cable is connected. If this is unplugged again, the device switches back to optical mode.

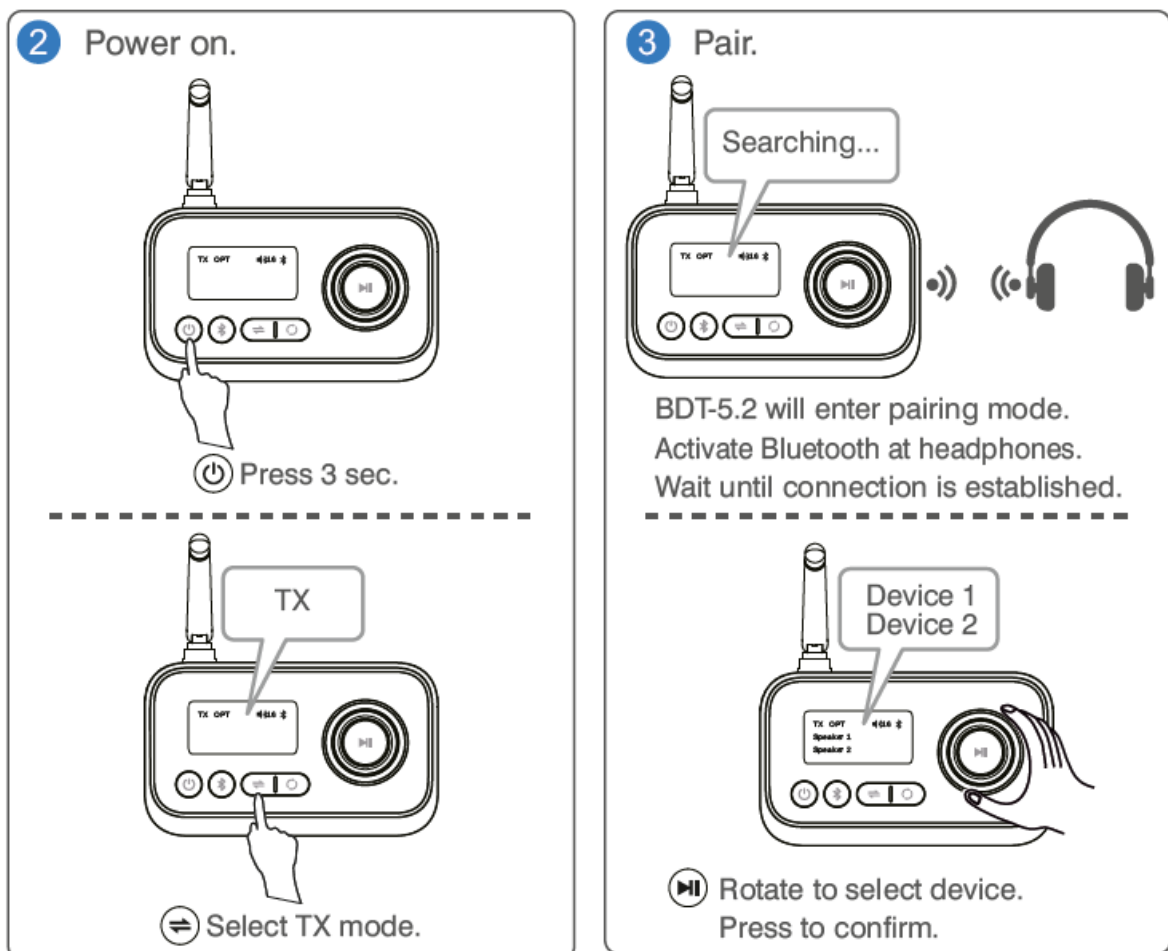
## Bluetooth transmitter mode

### Bluetooth transmitter mode (TX)

1. Connect the audio adapter to a power source (TV or power adapter) with the USB cable and connect it to the TV with one of the audio cables.



**Note:** If you experience problems, please check the audio settings of the TV and whether you are using the correct connection on the TV. If necessary, do an AUX test with headphones. Dolby/DTS is not supported for optical output, please use PCM audio format.



2. The BDT-5.2 can simultaneously stream audio to two Bluetooth headsets. Both can play e.g. the same TV sound. To do this, activate Bluetooth on the second headset. Then press to pair and confirm with .
- Press to disconnect the current two paired devices and enter search mode. Available devices are shown on the display. To connect, select, and confirm with .
  - Press to automatically pair two available devices. Once the connection is established, both device names are shown on the display.
  - The BDT-5.2 will automatically reconnect to the recently connected two headsets once they are in pairing mode.
  - The display shows the audio codec used (e.g. [APT-X-HD]). The codec depends on the compatibility of the connected device.

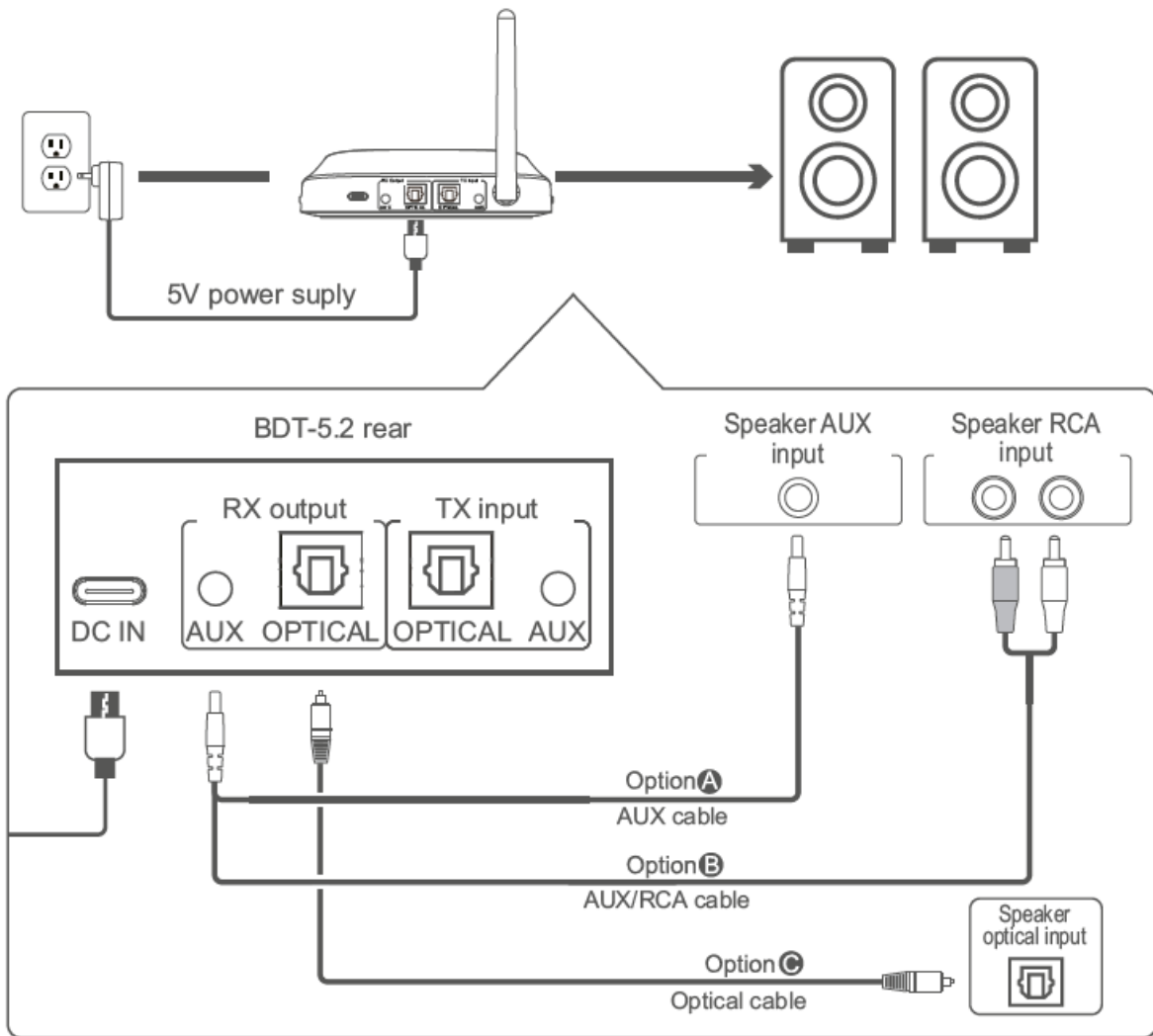
## Bluetooth receiver mode

### Bluetooth receiver mode (RX)

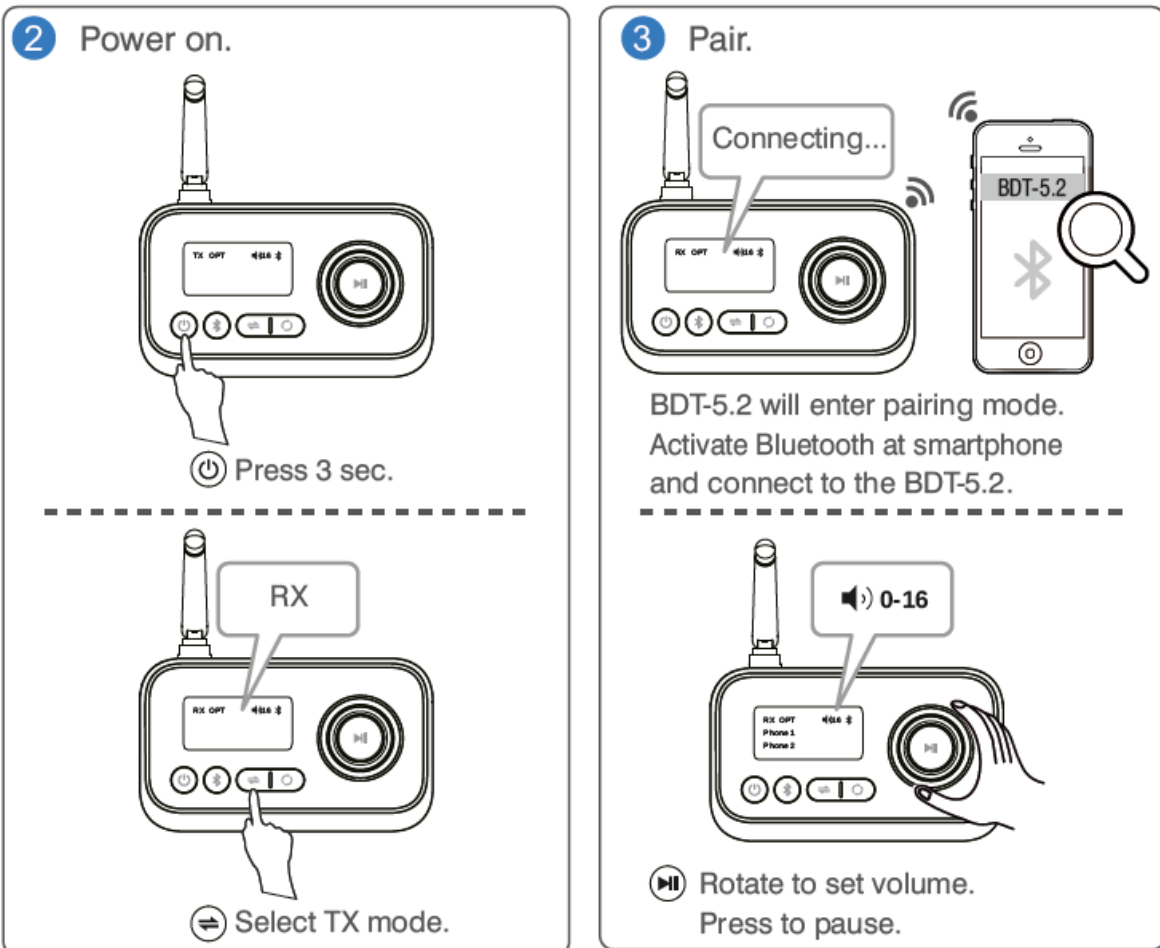
1. Connect the audio adapter to a power source (power adapter) with the USB cable and connect it to the loudspeaker with one of the audio cables.


## BDT-5.2PRO

## Loudspeaker







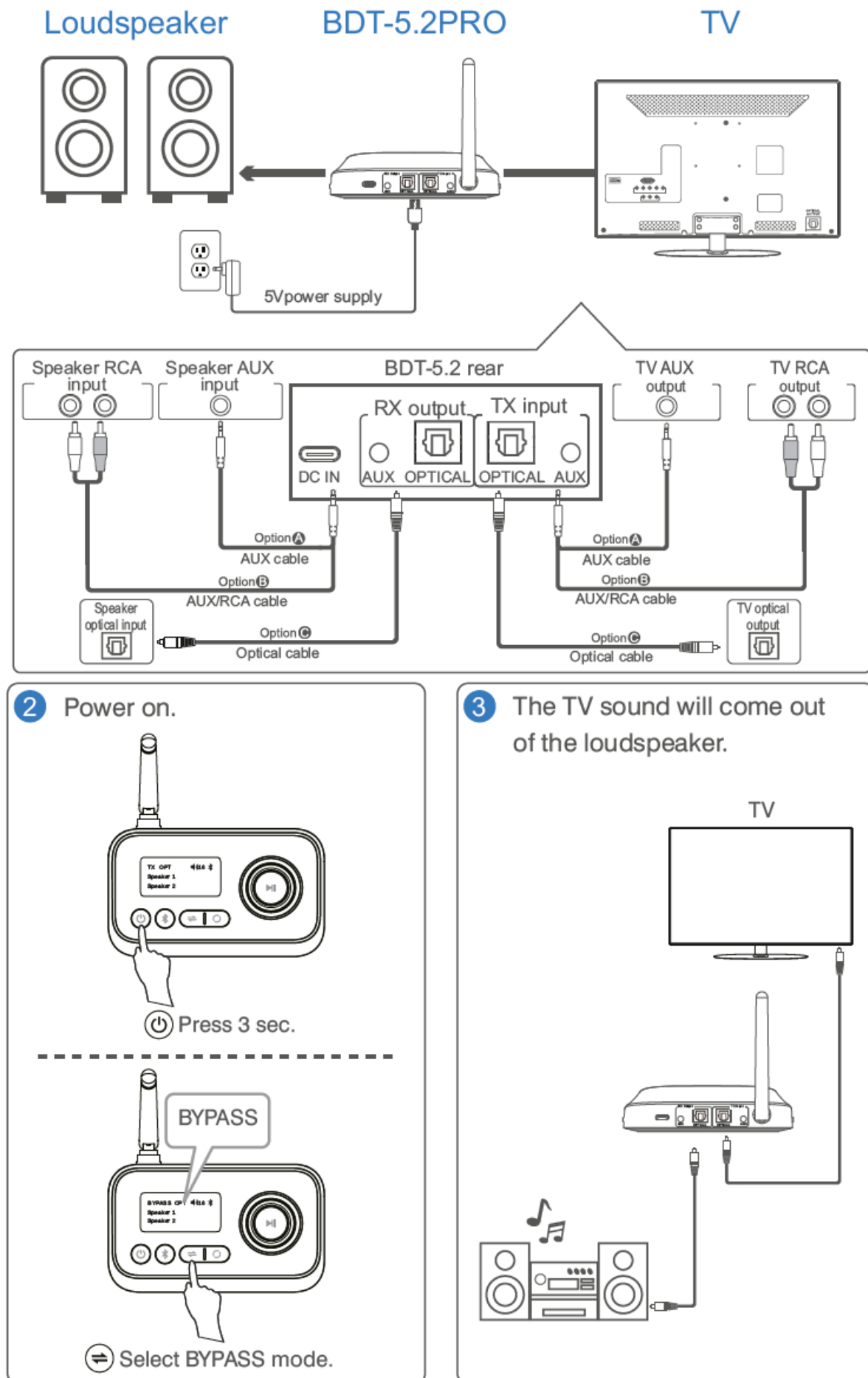
- The BDT-5.2 can pair with 2 smartphones or audio devices simultaneously, but can only play music from one device at any time.
- Press  to disconnect the current 2 paired devices and enter search mode.
- The BDT-5.2 stores the pairing information and will attempt to reconnect with the 2 most recently paired devices when powered on.
- The display shows the audio codec used (e.g. [APT-X-HD]). The codec depends on the compatibility of the connected device.

## Bypass mode

### Bypass mode (no Bluetooth)

- Bypass mode connects input and output directly and the Bluetooth function is disabled.
- Now you can use a wired speaker without the need to reconnect audio cables at the TV.

1. Connect the audio adapter to a power source (TV or power adapter) with the USB cable and connect it to the TV with one of the audio cables.



- Please set the audio format to PCM on the TV for optical audio output, Dolby/DTS is not supported.

## Safety warnings

1. Be sure to read all warnings before starting the operation. Please keep this guide for further needs.
2. Only use according to the instructions given in this guide. Improper use is dangerous and will void any warranty claim. Observe all safety instructions.
3. This product is not a toy. Keep it out of the reach of children and pets. Do not leave packaging material lying around carelessly.
4. **IMPORTANT:** This product is not an outdoor product! Only for indoor use! Do not use this device near water.
5. Protect the product against excessive humidity and heat, and to drastic temperature fluctuation. The recommended temperature is -5 to +45°C.
6. Please clean the product with a soft, dry cloth without detergent.
7. There are no serviceable parts inside the device. Unauthorized modifications on the device are prohibited.
8. This unit corresponds to all required directives of the EU and is therefore marked with **CE**.

If the unit is to be put out of operation definitively, take it to a local recycling plant for disposal which is not harmful to the environment. Do not dispose of it as municipal waste. Contact your retailer or local authorities for more information.

## Manufacturer declarations

- **Support**

For product updates, documentation, and support please visit [www.omnitronic.de](http://www.omnitronic.de). You can find the latest version of this user guide in the product's download section.

- **Copyright © 2024 Omnitronic**

All rights reserved. No part of this document may be reproduced in any form without the written permission of the copyright owner.

- **Disclaimer**

The contents of this document are subject to revision without notice due to continued progress in methodology, design, and manufacturing. Omnitronic shall have no liability for any error or damage of any kind resulting from the use of this document.

- **Trademarks**

All product names and trademarks mentioned herein are the property of their respective owners. They are not connected to Omnitronic in any way.



[www.omnitronic.de](http://www.omnitronic.de)

Omnitronic is a brand of Steinigke Showtechnik GmbH Andreas-Bauer-Str. 5 • 97297 Waldbüttelbrunn, Germany.

## Documents / Resources



## [OMNIRONICS BDT-5.2PRO Bluetooth Transceiver](#) [pdf] User Guide

BDT-5.2PRO, BDT-5.2PRO Bluetooth Transceiver, BDT-5.2PRO, Bluetooth Transceiver, Transceiver

## References

- [Omnitronic: Ihr Hersteller und Großhändler für Audioequipment](#)
- [User Manual](#)

### Manuals+, Privacy Policy

This website is an independent publication and is neither affiliated with nor endorsed by any of the trademark owners. The "Bluetooth®" word mark and logos are registered trademarks owned by Bluetooth SIG, Inc. The "Wi-Fi®" word mark and logos are registered trademarks owned by the Wi-Fi Alliance. Any use of these marks on this website does not imply any affiliation with or endorsement.