



Omnirax OM13D-L Space Rack Cabinet Instructions

[Home](#) » [Omnirax](#) » Omnirax OM13D-L Space Rack Cabinet Instructions 

Omnirax OM13D-L Space Rack Cabinet Instructions



Contents

- [1 Product Dimension](#)
- [2 OM13D-L/R – Schematic](#)
- [3 Product Dimensions](#)
- [4 Documents / Resources](#)
- [5 Related Posts](#)

Product Dimension

- Broadcast
- Office
- Technical

OM13D-L/R – Schematic

OM13D-L

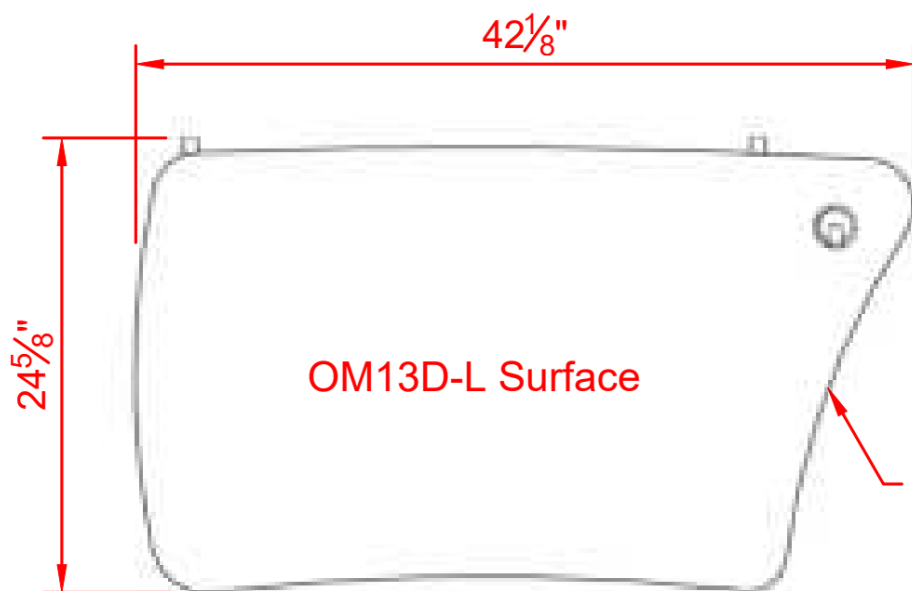


OM13D-R



ISOMETRIC VIEWS

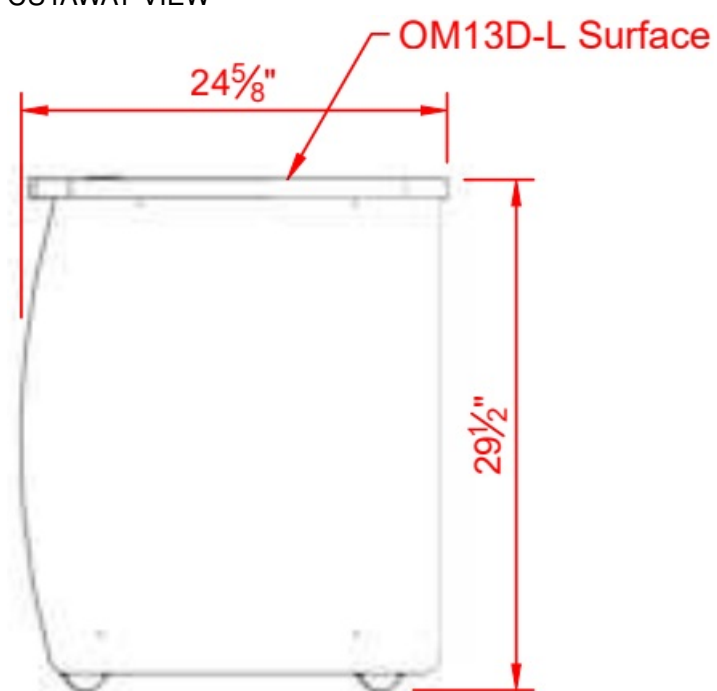
Product Dimensions



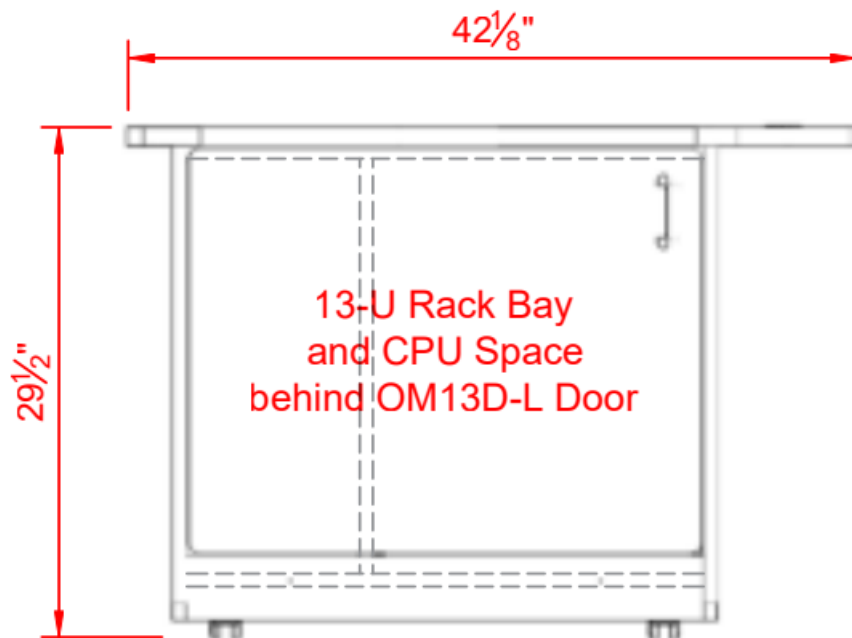
This edge lines up with the side of



the Omnidesk
CUTAWAY VIEW



SIDE VIEW

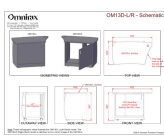


FRONT VIEW

Note: These orthographic views illustrate the OM13D-L (Left Hand) model. The OM13D-R (Right-Hand) model is identical, but is a mirror image of the OM13D-L.



Documents / Resources

	<p>Omnirax OM13D-L Space Rack Cabinet [pdf] Instructions OM13D-L Space Rack Cabinet, OM13D-L, Space Rack Cabinet, Rack Cabinet, Cabinet</p>
---	--