



Omnirax KMSPR Adjustable Keyboard User Manual

[Home](#) » [Omnirax](#) » Omnirax KMSPR Adjustable Keyboard User Manual 

Contents

- [1 Omnirax KMSPR Adjustable Keyboard](#)
- [2 Product Information](#)
- [3 Product Usage Instructions](#)
- [4 Overview](#)
- [5 Dimension](#)
- [6 Contact Information](#)
- [7 Documents / Resources](#)



Omnirax KMSPR Adjustable Keyboard



Product Information

The KMSPR is a fully articulating keyboard/mouse shelf designed to be mounted on the underside of the Presto or Presto4 desk surface. It allows for easy adjustment of the shelf in various directions to provide a comfortable and ergonomic typing experience.

Key Features:

- Fully articulating design
- Mounts on the underside of the desk surface
- Allows for movement in, out, up, and down
- Tilt adjustment knob for personalized positioning

Product Usage Instructions

To use the KMSPR keyboard/mouse shelf, follow these steps:

1. Ensure that you have a Presto or Presto4 desk with a suitable underside for mounting the KMSPR.
2. Locate the KMS Track included in the package.
3. Attach the KMS Track securely to the underside of the desk using appropriate screws or mounting hardware.
4. Slide the KMS Mechanism along the Track to find your preferred position.
5. Use the swivel function to adjust the slide's angle for optimal comfort.
6. Rotate the Tilt adjustment knob to achieve the desired tilt angle for your keyboard/mouse.
7. Place your keyboard and mouse on the KMSPR Shelf.
8. Move the shelf in, out, up, and down as needed to find a comfortable typing position.

Note:

For detailed diagrams and measurements, refer to the KMSPR Schematic provided in the user manual.

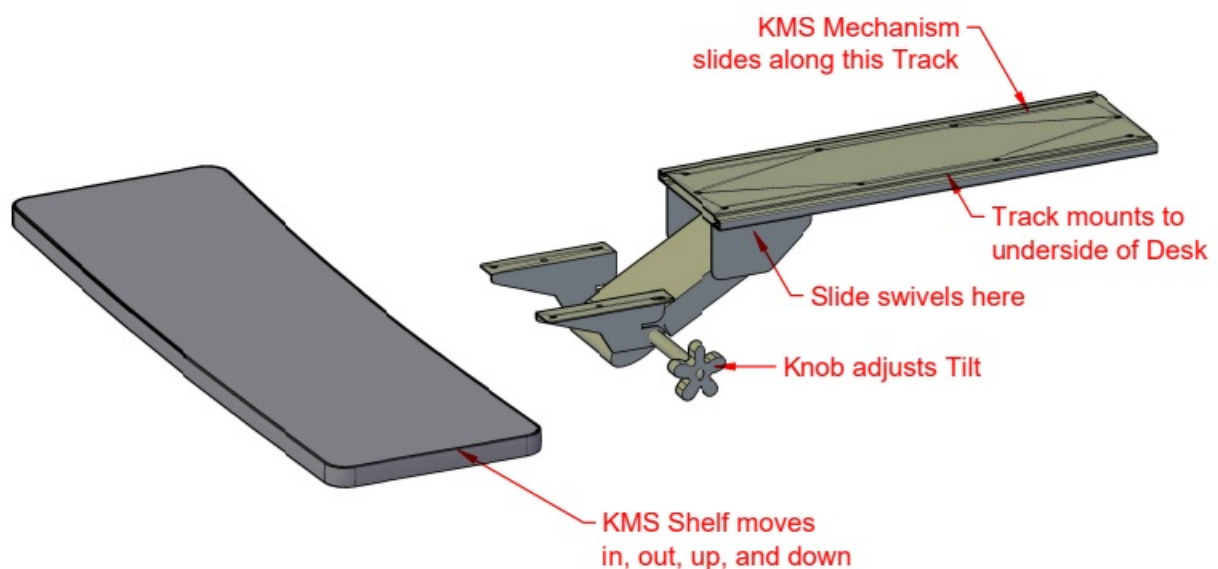
If you have any questions or need further assistance, please contact OmniRax at the following:

- P.O. Box 1792, Sausalito, California 94966 USA
- **Phone:** 415.332.3392 / 800.332.3393
- **Fax:** 415.332.2607
- **Email:** info@omnirax.com
- **Website:** www.omnirax.com.

The KMSPR is a fully articulating keyboard / mouse shelf which mounts on a slide on the underside of the Presto or Presto4 desk surface.

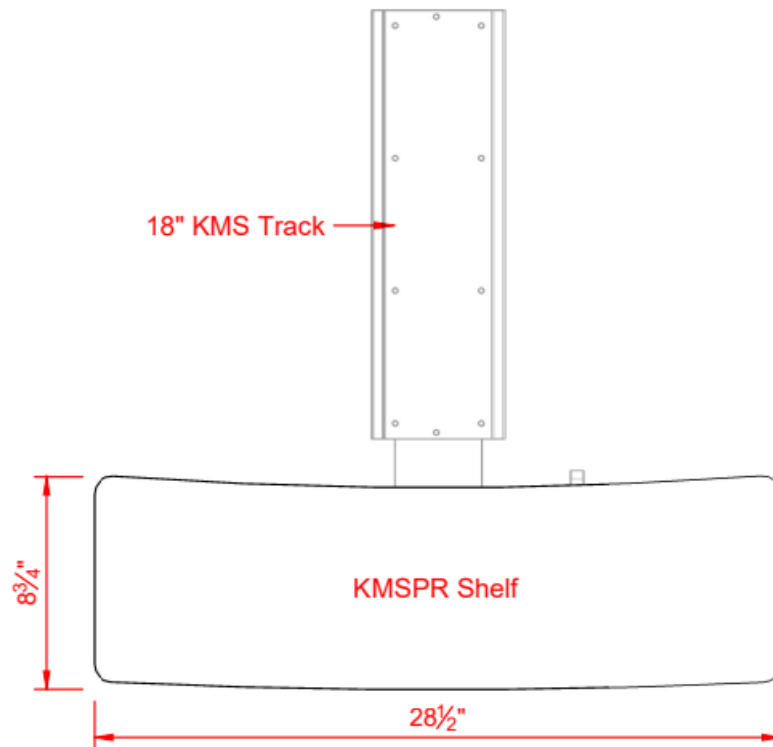
Overview

ISOMETRIC VIEW



Dimension

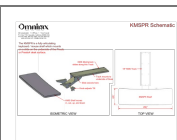
TOP VIEW



Contact Information

- P.O. Box 1792, Sausalito, California 94966 USA
- **Phone:** 415.332.3392 / 800.332.3393
- **Fax:** 415.332.2607
- **Email:** info@omnirax.com
- **Website:** www.omnirax.com.

Documents / Resources



[Omnirax KMSPR Adjustable Keyboard](#) [pdf] User Manual
KMSPR Adjustable Keyboard, KMSPR, Adjustable Keyboard, Keyboard