



# Omnipemf NeoRhythm Tube Full Body PEMF Device User Manual

[Home](#) » [omnipemf](#) » Omnipemf NeoRhythm Tube Full Body PEMF Device User Manual 

## Contents

- 1 Omnipemf NeoRhythm Tube Full Body PEMF Device
- 2 Introduction
- 3 Device Description
- 4 Included in the Package
- 5 Who CAN and CAN'T Use NeoRhythm Tube?
- 6 NeoRhythm Tube Set-Up
- 7 NeoRhythm Tube's Bluetooth® Settings
- 8 Controls
  - 8.1 USING NEORHYTHM TUBE FOR THE FIRST TIME
- 9 Getting to know your NeoRhythm Tube
- 10 Light Indicators
- 11 Device Positions
- 12 Test Tube – How to Use and What Does It Tell You?
- 13 How to Use NeoRhythm Tube Most Effectively
- 14 Maintenance and Cleaning
- 15 Troubleshooting Guide
- 16 Technical and System Specification
- 17 Safety Warnings
- 18 Manufacturer and Warranty Service
- 19 DISCLAIMER
- 20 Documents / Resources
  - 20.1 References
- 21 Related Posts

# Omnipemf NeoRhythm Tube Full Body PEMF Device



## Introduction

In a world full of options, we want to take a moment to thank you for choosing us. PEMF stimulation devices are an excellent tool for achieving the desired state of body and mind. Please read this user manual carefully, even if you are familiar with a similar product. To ensure your safety and of others, please read this user manual before using NeoRhythm Tube. Please do not disassemble the device. It can be unsafe and will void the manufacturer's warranty.

This appliance should be used by adults over 18 years. Children over 8 years can also use it provided that they are under adult supervision. It can be used by people with reduced physical, sensory or mental capabilities or lack of experience and knowledge if they have been given supervision or instructions concerning the use of the appliance in a safe manner and in addition to that understand the hazards involved. Children shall not play with the appliance. Children shall not clean or make any device maintenance without supervision.

This appliance contains non-replaceable batteries.

Must only be supplied with a safety extra-low voltage corresponding to the marking on the appliance.

The appliance is only to be used with the power supply unit provided with the appliance.

**WARNING:** To recharge the battery, use only the detachable supply unit provided with this appliance.

## Device Description

NeoRhythm Tube is the first PEMF device with a multi-coil structure that can be gesture or smartphone-controlled, which makes it one of the most user-friendly PEMF devices on the market. It helps you get into the desired state of mind by emitting scientifically supported frequencies through electromagnetic fields. With appropriate positioning of the coils inside the device which generate electromagnetic fields, we precisely target the right locations to get the desired effect. NeoRhythm Tube's efficiency is confirmed by two independent double-blind, placebo-controlled studies and supported by many other scientific studies.

To find out more, please visit [www.omnipemf.com](http://www.omnipemf.com)

## Included in the Package

1. NeoRhythm Tube

2. Micro USB cable
3. QR code with User Manual
4. Test tube
5. Hard reset tool
6. Bag

## **Who CAN and CAN'T Use NeoRhythm Tube?**

**CAN:** NeoRhythm Tube has been developed for the general public to safely and effectively energize your body. The expected key benefit of using NeoRhythm Tube is better living. When PEMF is regularly and properly applied, the expected results are improved sleep quality, a facilitated reach of specific awake states, as well as improved emotional and logical intelligence.

**CAN'T:** The use of a pulsed electromagnetic field device is contraindicated in people with pacemakers or other electronic implants, non-MRI-safe IUDs, cochlear implants, or mechanical heart valves because the magnetic field can shut the device off or otherwise interfere with its functioning. You also shouldn't use NeoRhythm Tube if you have epilepsy.

Pulsed electromagnetic field is also contraindicated in organ transplant patients due to a possible risk of affecting the immune suppression/rejection process. There is a chance that electromagnetic fields may stimulate or activate a more aggressive rejection process by stimulating the immune system.

The safety of pulsed electromagnetic fields has not been established in pregnancy, although there is no evidence of harm. We advise against using NeoRhythm Tube during pregnancy.

Patients should consult their doctors when thinking about using a pulse generator (NeoRhythm Tube) with conventional medical treatment. This information is not a substitute for professional medical advice.

### **Age Restrictions**

NeoRhythm Tube should only be used by individuals aged 18 years or older ("Permitted Age"). Children over 8 years can also use it provided that they are under adult supervision. If the user is of the Permitted Age but under the age of majority in the jurisdiction in which the user is domiciled, the user should review this manual and any applicable terms of use with their parent or guardian to make sure that the parent or guardian understands this manual and the applicable terms of use.

### **Possible Side Effects and General Precautions**

NeoRhythm Tube emits an electromagnetic field. There is no valid scientific reason to believe that NeoRhythm Tube's pulsed electromagnetic emission is harmful, but if you have concerns about exposure to these emissions, you should not use this device. Pulsed electromagnetic field side effects are usually non-existent or minor and temporary, but they may be observed in users who are hypersensitive to electromagnetic fields. It is very important to drink at least 8-10 oz (2-3 dl) of water before and after using NeoRhythm Tube.

## **NeoRhythm Tube Set-Up**

1. Make sure the Tube is fully charged.
2. Search your app store for Omnipemf or NeoRhythm and download the app.
3. Follow the in-app tutorial. It will guide you through connecting your device to your smartphone and completing your first NeoRhythm Tube session. How to connect both devices using Bluetooth® is also described in chapter 9.1, Using NeoRhythm Tube for the first time.
4. Join Omnipemf's social networks. They are a great place to learn more about the device and its features, share experience with other users, and chat with the team behind NeoRhythm Tube.



## **NeoRhythm Tube's Bluetooth® Settings**

(Stimulation status in the app)

When NeoRhythm Tube is activated, its Bluetooth® is automatically enabled and ready to connect with your device. However, the settings in the NeoRhythm Tube App allow you to keep NeoRhythm Tube's Bluetooth® active while the stimulation process is on or to deactivate it WHILE the program is running, completely.

### **Bluetooth® during stimulation ON**

This setting leaves Bluetooth® active also when you are using your NeoRhythm Tube (a stimulation program is running).

#### **ADVANTAGES:**

- A countdown timer progress bar will be activated while the stimulation program is running.
- You will have access to the in-app statistics on your mobile device (duration of stimulation program used, frequency of past usage, etc.) once the program ends and the Bluetooth® connection is reestablished (automatically).
- It's easier to change stimulation programs, as your phone doesn't need to reestablish its Bluetooth® connection to NeoRhythm Tube. Simply select a new program and tap NeoRhythm Tube's control box twice or press the PLAY button in the app on your smartphone to start it.

#### **DISADVANTAGES:**

- If Bluetooth® is also active during stimulation, it emits its own (much higher) frequencies.
- Your mobile phone has to be within the Bluetooth® connectivity range of the device, or else due to connectivity loss, the data will not be synced.

### **Bluetooth® during stimulation OFF**

This setting automatically deactivates NeoRhythm Tube's Bluetooth® when a stimulation program starts and activates it again when the, program ends. Bluetooth® is completely disabled ONLY while the program is running.

#### **ADVANTAGES:**

- No unwanted additional frequencies emitted during stimulation. just the ones NeoRhythm Tube emits to help you reach the desired state of mind and body.

- You don't need your mobile device (only for setting up the program).

## **DISADVANTAGES:**

- A countdown timer progress bar will not be activated while the stimulation program is running as the communication via Bluetooth® is not established.
- You will have access to the in-app statistics on your mobile device (duration of stimulation program used, frequency of past usage, etc.) only when you reconnect to the app via Bluetooth®. In this case, only the last 10 sessions run will be synced.
- Your mobile device needs to re-establish the connection to NeoRhythm Tube every time you want to change the stimulation program. That means you will have to go to the home page and click CONNECT.
- Your mobile device won't be able to communicate with NeoRhythm Tube during the stimulation. Visiting the homepage, you will see the CONNECT button active (can be clicked); however, the connection will not be established because the program is running, and NeoRhythm Tube's Bluetooth® is OFF. You will have to stop (interrupt) the stimulation program with a double-tap on NeoRhythm Tube's control box and reconnect to your mobile device on the home page.

## **Which setting is better for you?**

The ON option is selected by default, and we suggest that you leave it this way for the first few uses as it doesn't require to re-establish the connection each time you want to select a new stimulation program. You can turn it off later if you don't want the Bluetooth® to be active when you use your NeoRhythm Tube.

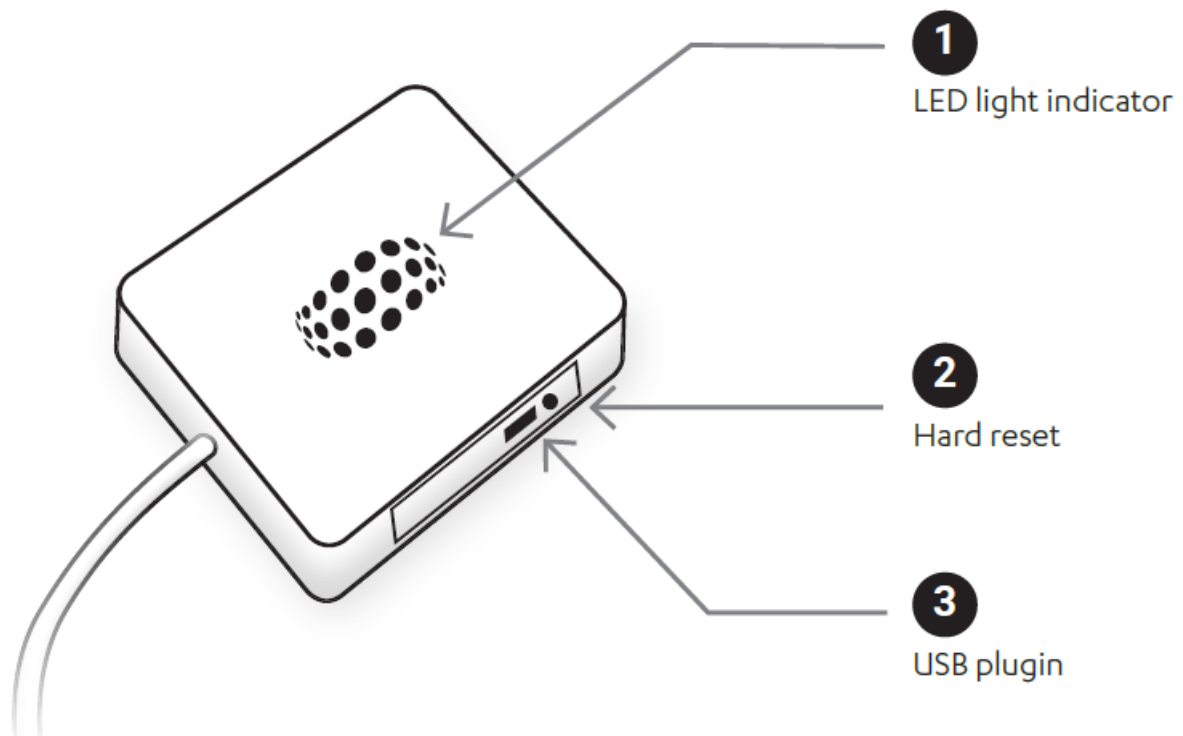
**NOTE:** If you are using the same stimulation program most of the time, it is recommended that you turn Bluetooth® off in the app's settings.

This will allow you to use your NeoRhythm Tube only with the gesture controls – simply tap NeoRhythm Tube's control box (after waking it up) to restart your most recently used program.

## **How will I know that my chosen stimulation program has started/stopped if I turn off Bluetooth®?**

Although you won't be able to see the progress bar, NeoRhythm Tube will notify you when your chosen program starts/stops with vibrations and light indicators.

## **Controls**



NeoRhythm Tube has an option to be gesture-controlled (tapping the control box with your hand) or via app on your smartphone. Bluetooth® is also not required, except for when you are changing or choosing a new program. This makes NeoRhythm Tube one of the most user-friendly devices on the market.

It is controlled by tapping the control box, so for regular use of the same program, you don't even need your smartphone. A smartphone is only used for switching among different stimulation programs or changing the settings.

#### **USING NEORHYTHM TUBE FOR THE FIRST TIME**

##### **1. CHARGE**

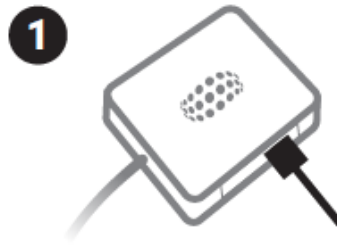
Charge your NeoRhythm Tube for a minimum of 2.5 hours when using it for the first time. NeoRhythm Tube is unlocked when plugged into the charger.

##### **2. DOWNLOAD THE APP**

Download the Omnipemf App to your mobile device or tablet from the iOS App Store or Google Play store.

##### **3. START THE APP**

Press START and accept the Terms and Conditions. Make sure to have Bluetooth on your device turned ON and follow the step-by-step User Guide. If you are using an Android device, you will be asked to enable location services while using the app.



#### 4. WAKE UP THE DEVICE

Double tap the control box to wake NeoRhythm Tube up (confirmed by a double vibration) – at this point the device is ready to use.

#### 5. CONNECT

Click the CONNECT button in the app and wait until NeoRhythm Tube pairs with your device.

#### 6. CHOOSE YOUR MODE

Choose between QUICK START or ADVANCED MODE.

#### 7. START SESSION

Once you choose a program, set your duration and the session will begin (followed by single vibration). To stop a session either press the STOP button in the app or double tap the control box.



#### 1. How to check if stimulation is in progress?

Check if the green light is blinking (1 blink per second). Each stimulation program also starts with 1 short vibration. You can also use the test tube with a magnet to confirm the presence of a magnetic field.

#### 2. How to check if NeoRhythm Tube is charging?

Orange light means it's charging. No light while charging means it's fully charged. Blinking red light (1 blink per second) means the battery is low.

#### 3. How do I know NeoRhythm Tube is connected to my phone?

Blinking orange light (1 blink per second) means it's connected to your mobile device (and no program is running).

### Getting to know your NeoRhythm Tube

#### 1. RESTARTING THE MOST RECENTLY USED PROGRAM

To restart the last used program, gently tap the control box once to wake up NeoRhythm Tube and then tap it twice to start the last used program. The start of the program is confirmed by 1 short vibration. Follow the LED light indicator (number 1) to check the status of the device. A blinking green light once per second means the program is running. No need to connect to the app if you want to just restart the most recently used program.

Note: NeoRhythm Tube does not require the use of your smartphone while the program is running.

#### 2. USING A DIFFERENT PROGRAM

If you want to start a different program and NeoRhythm Tube is turned off, first tap the control box once to wake



it up. Make sure the Bluetooth® connection is established (orange light blinking every second). Select a new program, desired time of use, and press the "SELECT" button in the app. Tap NeoRhythm Tube's control box twice and the new program will start (confirmed by 1 short vibration). Follow the LED light indicator (number 2) to check the status of the device. Blinking green light (1 blink per second) means the program is running. If a program is currently running and you want to start using another program, first tap NeoRhythm Tube's control box twice to stop the current program (confirmed by 2 short vibrations), click on Session, select the new program, desired time of use, and press the "SELECT" button in the app. Tap NeoRhythm Tube's control box twice again, and the new program will start (confirmed by 1 short vibration). Follow the LED light indicator (number 2) to check the status of the device. A blinking green light once per second means the program is running.

### 3. STOPPING THE RUNNING PROGRAM

If you want to stop a running program to select and initialize another one, double-tap the control box to interrupt the program already running; the device will vibrate twice, meaning the program has stopped. Then choose the desired program and double-tap the control box again. If you want to stop a running program and stop using the device, all you need to do is tap the control box twice (confirmed by 2 short vibrations), and leave it. NeoRhythm Tube will turn off by itself.

### 4. USING THE HARD RESET TOOL

If you encounter a problem and NeoRhythm Tube stops functioning, you can use the hard reset feature (number 3).

#### When should you use hard reset?

- No response when charging the device,
- Wrong LED light color when charging/done charging/starting a new program (check the light signals described in the next chapter).

Always check if the battery is full. When resetting the device, insert the hard reset tool into the hole close to the micro USB port and push gently.

To keep you updated on the current state of the device, NeoRhythm Tube has integrated 3 different color light indicators – orange, red, and green LED lights. Read more about them in the next chapter.

### 5. USING THE "LOCK NEORHYTHM TUBE" FUNCTION IN THE APP

If you want to turn NeoRhythm Tube off completely, connect to the device via Bluetooth®, go under settings, and click LOCK NeoRhythm Tube. This will completely shut it down and lock it to prevent further use. To start using it again, plug it into a USB port to unlock it. All the statistics will be stored on the phone.

#### When to use this function?

You can lock your NeoRhythm Tube when traveling or carrying it in a bag/purse/backpack for more extended periods to prevent unintentional use.

## Light Indicators

The LED lights on the left side of the flat surface of the device indicate the working state of NeoRhythm Tube. NeoRhythm Tube has integrated orange, red, and green lights.

1. Blinking red light: The battery is low and you have to recharge the device.
2. Blinking orange light (1 blink per second): NeoRhythm Tube is connected to your phone via Bluetooth®.
3. Orange light on: NeoRhythm Tube is charging, USB is plugged in.
4. No light on when charging: NeoRhythm Tube is fully charged.

5. Blinking green light (1 blink per second): The chosen stimulation program is running.
6. Slowly blinking green light (1 blink per 5 seconds): NeoRhythm Tube is on standby; USB is unplugged.

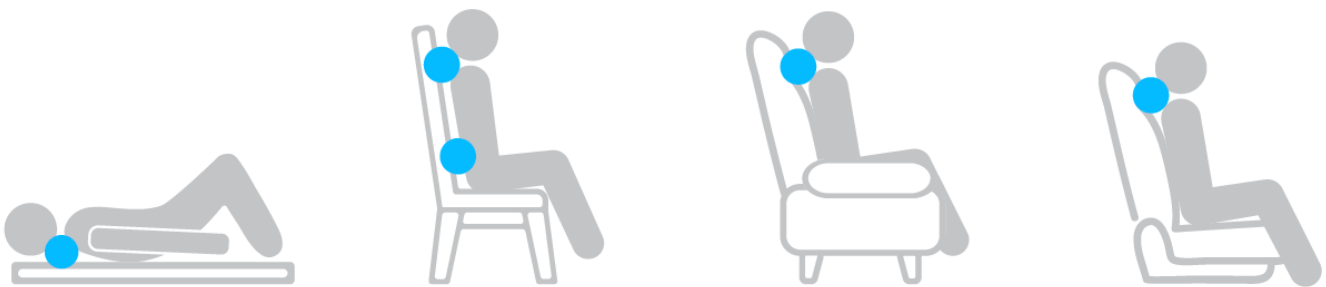
## Device Positions

NeoRhythm Tube has three specially designed coils that generate electromagnetic fields and are powered by a pulse generator also located in the device. The ability to adapt stimulation zones to the chosen program is a unique advantage of NeoRhythm Tube. This benefit enables it to target the right part of the body more efficiently. NeoRhythm Tube can be used in different ways and on different parts of the body depending on the chosen stimulation program.

**Note:** The positions shown below can be slightly adjusted to better fit your individual needs and make wearing NeoRhythm Tube comfortable in any situation. Changing the device's position for up to about an inch (3-4 cm) won't decrease its effectiveness or interfere with its functioning in any significant way.

**Note:** Proper device positioning is also shown within each stimulation program in the app. For more information please see: <https://omnipemf.com/support/>

## RECOMMENDED POSITIONS



## Test Tube – How to Use and What Does It Tell You?

In most cases, the non-invasive pulses are not tangible. Because of that reason, we added a magnetic tester tube in the NeoRhythm Tube package with which you can hear the impulses emitted by the device. It can be used to confirm that a stimulation program is running (NeoRhythm Tube emits an electromagnetic field when active and the magnet reacts to it – you can hear a sound when listening to the test tube).

You can also test the frequency of pulsed electromagnetic fields in different stimulation programs, as well as observe the change in the strength of the electromagnetic field as the test tube moves away from or closer to NeoRhythm Tube. Keep in mind that the magnet will not visibly move or create a very audible rattle – rather a slight ticking noise.

### What do you actually hear when using the tube?

As the magnet in the tube reacts to the magnetic field produced, you get to hear the frequency of the electromagnetic pulses emitted by the coils inside NeoRhythm Tube.

### Testing the FREQUENCY of different stimulation programs

Choose the desired program in the application, run it and place the test tube on NeoRhythm Tube. The test tube must touch the device. Place the glassy bottom of the tube on the device and place your ear on the other side where the silver cap is. Testing is done on the surface of the NeoRhythm Tube. That is where the coils are placed and the impulses can be heard. If you, for example, choose the Improve Sleep program, you will be able to hear a low frequency, because this program uses low frequencies of theta brainwaves to calm your brain and prepare it for sleep. It will sound like a slow beating (with 3-4 beats per second). Then try the Improve Focus Capacity

program. Select it in the application, run it, and move the test tube close to NeoRhythm Tube. The sound frequency will be much higher because the Improve Focus Capacity program uses beta brainwave frequencies to sharpen your brain and prepare it for intensely focused work. This program produces a fast-beating noise (with 30+ beats per second).

### **Testing the STRENGTH of the electromagnetic field**

Turn on the device. Move the test tube close to NeoRhythm Tube and listen carefully. The magnet in the test tube will produce a sound. The sound will be more intense and louder when the test tube is closer to NeoRhythm Tube. If you increase the distance, the sound will slowly fade away. This happens because the intensity of the magnetic field decreases with distance from the surface of the device.

## **How to Use NeoRhythm Tube Most Effectively**

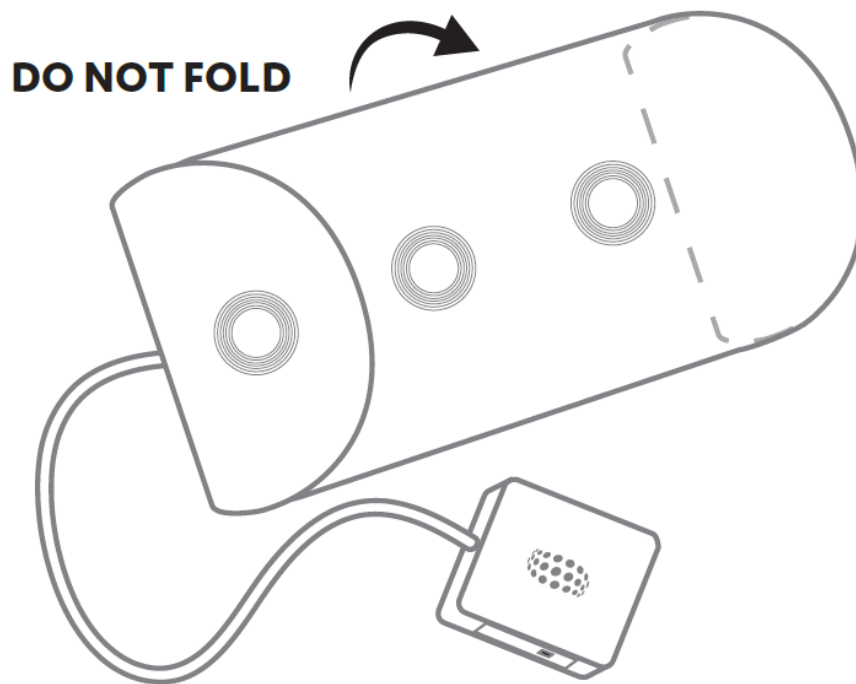
### **Recommendations**

1. For general wellness, it is recommended that you use your NeoRhythm Tube twice a day. That helps recharge your cells to their optimal state. Check the in-app instructions found inside each stimulation program to learn what is the recommended usage frequency and the duration of stimulation.
2. It is recommended to drink enough water (at least 8-10 8-ounce cups or 2 liters a day) and at least one 8-ounce (2 dl) cup of water before using NeoRhythm Tube and immediately after as to help facilitate the natural release of toxins.
3. Eat a healthy diet, free of chemicals and pesticides, refined foods and sugar, and consume a lot of green vegetables.

### **Maintenance and Cleaning**

Do not use NeoRhythm Tube near water and when you are wet. NeoRhythm Tube's outer fabric can be removed and washed in a washing machine, up to 40 °C. The outer fabric can also be ironed but make sure you take off the fabric to avoid damaging the device. Avoid direct ironing on the area with the printed text. NeoRhythm Tube should be used on flat surfaces.

**Note:** Please make sure you fold NeoRhythm Tube properly (see image on page 15) If folded improperly this may result in ineffectiveness or damage to the coils. Avoid excessive physical impact to the device, and do not stretch or bend it as this can damage the copper coils and the hardware. The manufacturer does not take responsibility for devices damaged by improper use.



## Troubleshooting Guide

It is important to know that we are always here for you. If you have any questions, please contact us through our social media (FB) or by filling out the contact form on our website [www.omnipemf.com/support](http://www.omnipemf.com/support).

### **The LED indicator is not working.**

Recharge the battery. Check the USB cable.

### **The device has been exposed to excessive amounts of water.**

NeoRhythm Tube is not designed to be waterproof, although short exposure to water may not permanently damage the device. If NeoRhythm Tube has been exposed to water, remove its fabric cover and place it somewhere to dry.

### **NeoRhythm Tube fails to help the problem for which it was purchased.**

First, verify that NeoRhythm Tube is functioning. Make sure that the battery is fully functional for the whole duration of stimulation each time it is used. Make sure the LED lights are functioning and that the green light is blinking. Make sure that the start of the program is confirmed by 1 short vibration.

Contact us through our social media (FB) accounts or by email about using NeoRhythm Tube. It is possible that the device has been placed incorrectly. There are several positions how you can use NeoRhythm Tube. In many cases, simply adjusting the device placement greatly improves the effectiveness of it.

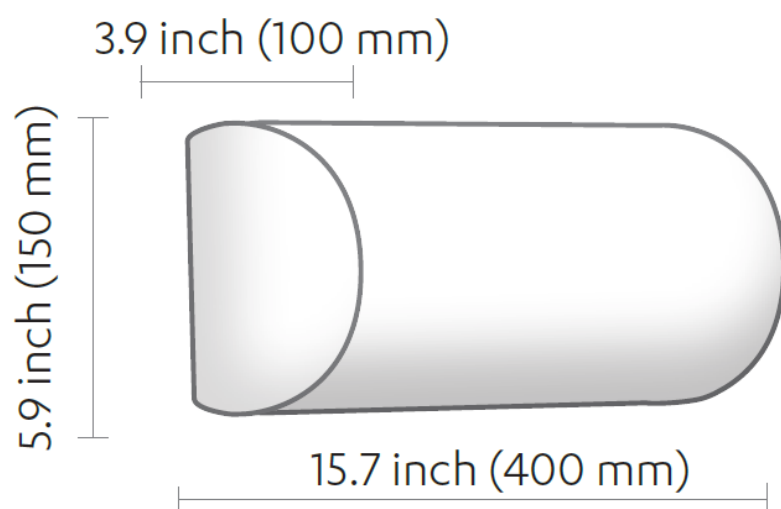
It is also possible that the period of use has not been long enough for the desired effect to be seen. Consider using NeoRhythm Tube regularly for 2 to 3 weeks. Beneficial effects are usually seen within the first few days.

### **NeoRhythm Tube seems to help, but then the problem eventually comes back.**

If a short period of using NeoRhythm Tube yielded good results, but then after not using NeoRhythm Tube for a while, the problem recurs, consider using NeoRhythm Tube for a more extended period. Proper nutritional support and supplements are also helpful in conjunction with using NeoRhythm Tube.

## Technical and System Specification

Operating system	Android 5.0 and above iOS 7 and above
Waveform	Trapezoidal
Frequency Range	3 – 303.41 Hz
Maximum Magnetic Field Intensity	25 gauss (2.5 mT)
Number of Programs	12 + custom programs
Program Duration	20 min – 8 hours; selected minutes or continuous
Power	Internal rechargeable battery
Weight	295 g
Dimensions	15.7 in x 3.9 in x 5.9 in 400 mm x 100 mm x 150 mm
Warranty	2 years



**Classification**

NeoRhythm Tube is classified as a household device.

**CE regulatory information:**

Safety: EN 60335-1

EMC EN 303 4461 (EN 55014-1/2)

Radio Equipment Directive (RED) 2014/53/EU

**FCC regulatory information:**

device complies with part 15 of the FCC Rules

**Safety Warnings**

- Do not expose NeoRhythm Tube to fire, place it near a hot oven, or mechanically crush or cut the device or its battery, as this may result in an explosion.
- Do not expose NeoRhythm Tube to extremely high temperatures, as this may result in an explosion or leakage of flammable liquid or gas.
- Do not expose NeoRhythm Tube to extremely low air pressure, as this may result in an explosion or leakage of flammable liquid or gas.
- Don't attempt to replace NeoRhythm Tube's battery yourself –you may damage the battery, which could cause overheating and/or injuries.
- Be careful when folding NeoRhythm Tube, see instructions for correct folding. If folded improperly this may result in ineffectiveness or damage to the coils.
- Do not use NeoRhythm Tube near water or when you are wet, as the device is not waterproof.

**Manufacturer and Warranty Service**

- MANUFACTURER
- MDCN TECH Ltd
- Made in Europe
- WARRANTY SERVICE

**Contact**

Email: [foryou@omnipemf.com](mailto:foryou@omnipemf.com)

Our warranty policy covers physical and digital defects. All devices purchased through [omnipemf.com](http://omnipemf.com) or any other official sales channels of MDCN Tech Ltd are covered by this warranty. If a device exhibits physical or digital defects that affect its functioning and this is verified by our customer support team, then a replacement or direct compensation is in line with this Warranty Policy. The Warranty Policy is active for two (2) years after the device is received by the customer, with a maximum extension of twenty-six (26) months. If a defect is verified and replacement approved, a new replacement product will be sent to the customer using the address and shipping instructions of their original order, unless requested otherwise. We offer no replacements or refunds for any products designated on this site as non-returnable. The warranty is not applicable in the following cases:

- Failure or damage to the device or its components due to improper use.
- Damage and contamination of the device caused by improper protection.
- The removal of the device's inner quality seal (which protects the electronic components and cushion) in the case of the NeoRhythm Tube. If the device's hardware or software has been opened, accessed and/or


modified from its original functioning state.

## DISCLAIMER

MDCN TECH LTD and its distributors offer low risk, general wellness products that promote a healthy lifestyle, help to maintain or encourage good health. Product not been evaluated by the FDA and products are not intended to diagnose, treat, cure, or prevent any disease or medical condition. PEMF products are meant to address energetic elements that aid the body's natural healing abilities and help restore and maintain energetic balance. The low- and medium-intensity pulsed electromagnetic fields generated by these products use similar levels of energy as the natural vitalizing energy of the Earth. The use of a PEMF product is contraindicated in people with pacemakers or other electronic implants, cochlear implants, or mechanical heart valves. PEMF products are also contraindicated during pregnancy and in people with epilepsy or bleeding. PEMF therapy is also contraindicated for: organ transplant recipients or those on immunosuppressive therapy and those with non-MRI-safe IUDs. Patients should tell their physicians when they are thinking about using NeoRhythm Tube with other treatment methods. This information is not a substitute for professional medical advice. If you have or suspect a medical problem, please consult your healthcare provider. Content generated or found through MDCN TECH LTD services or products is for informational purposes only and is not intended to replace the relationship between you and your physician or other healthcare providers. MDCN TECH LTD is not a licensed medical or healthcare provider and has no expertise in diagnosing, examining, or treating medical conditions of any kind.

[www.omnipemf.com](http://www.omnipemf.com)

## Documents / Resources

 The image shows a cylindrical NeoRhythm Tube device with a coiled cable and a small control unit. Text on the image includes 'NeoRhythm TUBE by MDCN TECH LTD', 'For Better Living & Traveling', and 'Choose your own frequency, change your body.' <p>NeoRhythm TUBE by MDCN TECH LTD</p> <p>For Better Living &amp; Traveling Choose your own frequency change your body.</p>	<p><a href="#">Omnipemf NeoRhythm Tube Full Body PEMF Device</a> [pdf] User Manual NeoRhythm Tube Full Body PEMF Device, NeoRhythm Tube, Full Body PEMF Device, Body PE MF Device, PEMF Device</p>
---	--

## References

- [Omnipemf | Optimize your health with PEMF technology](#)
- [Omnipemf | Optimize your health with PEMF technology](#)
- [Support & User Manuals | Omnipemf](#)