

# OMNIBAR AT53A Swift Tag User Guide

[Home](#) » [OMNIBAR](#) » OMNIBAR AT53A Swift Tag User Guide 

Contents

1 OMNIBAR AT53A Swift Tag

2 IMPORTANT SAFETY INSTRUCTIONS

3 TECHNICAL SPECIFICATIONS

4 PRODUCT BINDING

5 PRODUCT FIND

6 BATTERY REPLACEMENT

7 FCC COMPLIANCE STATEMENT

8 WARRANTY

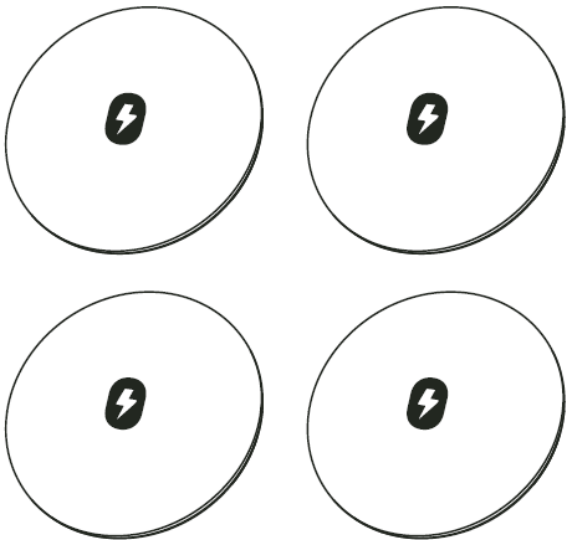
9 Documents / Resources

9.1 References

10 Related Posts

## OMNIBAR

### OMNIBAR AT53A Swift Tag



## IMPORTANT SAFETY INSTRUCTIONS

Before using this Bluetooth Tracker, thoroughly read all warnings and instructions. To avoid risk's like explosions, fires, electric shocks, or personal injury, adhere strictly to these guidelines and those from the manufacturers of any equipment you use with the Bluetooth Tracker. Omnibar may update this information without prior notice. For the latest updates and the most recent User Manual, visit [www.omnibar.com](http://www.omnibar.com).

## WARNINGS

**Please read all the instructions before using the product:**

- This product has a built-in 3V Li-Mn button cell battery. Do not disassemble, hit, crush, or throw it into the fire.
- Discontinue use immediately if the battery is severely swollen.
- Do not use it in a high-temperature environment.
- Do not use the battery if it is immersed in water!
- Please keep this product out of the reach of children.
- If the battery has been accidentally swallowed or placed inside any part of the body, please seek medical attention immediately, or it may cause severe internal burns or other hazards.
- If the battery compartment is not securely closed, stop using the product and keep it away from children.
- Do not charge the battery. If the battery is low, please replace it in time. Do not reverse the polarity when replacing the battery.
- To prevent product damage from battery leakage and corrosion, remove the battery if not in use for prolonged periods.
- If battery leakage occurs, avoid contact with skin or eyes. In case of contact with skin or eyes, rinse with water and seek medical attention immediately.
- Keep the dead battery out of the reach of children, and dispose of or recycle it properly according to local laws and regulations.

## TECHNICAL SPECIFICATIONS

- MODEL: AT53A
- BATTERIES: CR2032 Lithium Metal batteries required. (included)
- CONNECTIVITY TECHNOLOGIES: Bluetooth 5.3
- OPERATING SYSTEM: iOS or iPadOS 14.5 or newer
- SOUND SEARCH: 10-20M (indoor) / 20-50M (outdoor)
- VOLUME: 83dB (Sound Output at 10cm)
- OPERATING TEMPERATURE: -10-45 C
- MATERIALS: Fireproof PC
- SIZE: 43.5\*43.5\*7.95mm
- WEIGHT: 8./g
- FCC ID: 2BM7E-AT53A

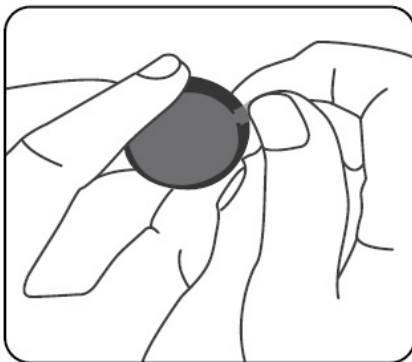
## IN THE BOX

- Bluetooth Tracker X 4

- Protective Cover X 4
- Instruction Manual
- 3M Adhesive X 8

## PRODUCT BINDING

1. Remove the insulating film
2. Enable the “Find My” app on your iPhone
3. Go to “Items” > “Add Item”



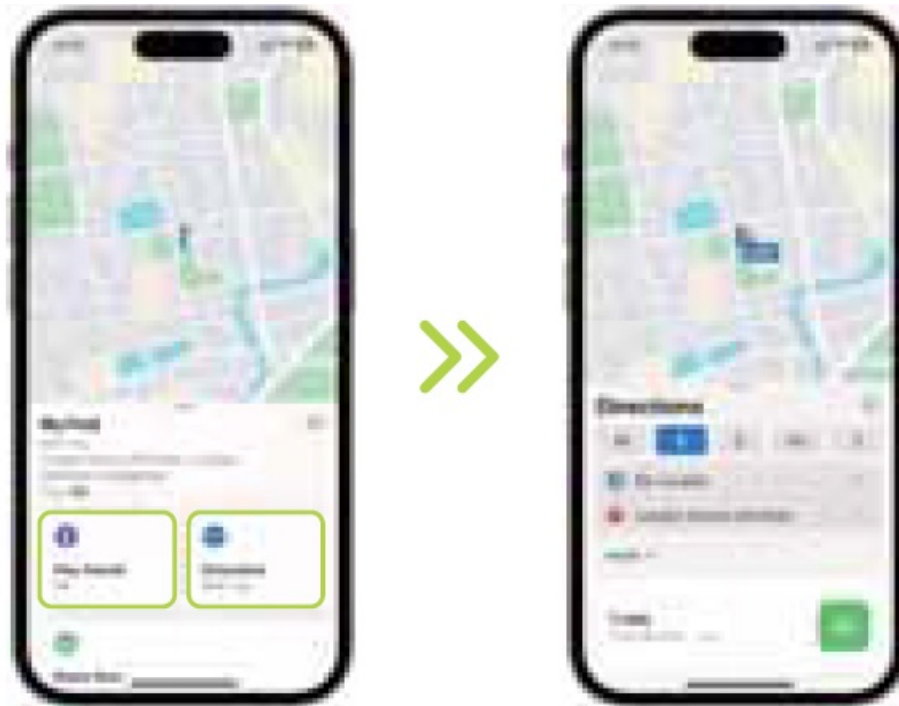
4. Bring the Smart Bluetooth Finder near your iPhone, wait for device search
5. Click “Connect” and rename it



## PRODUCT FIND

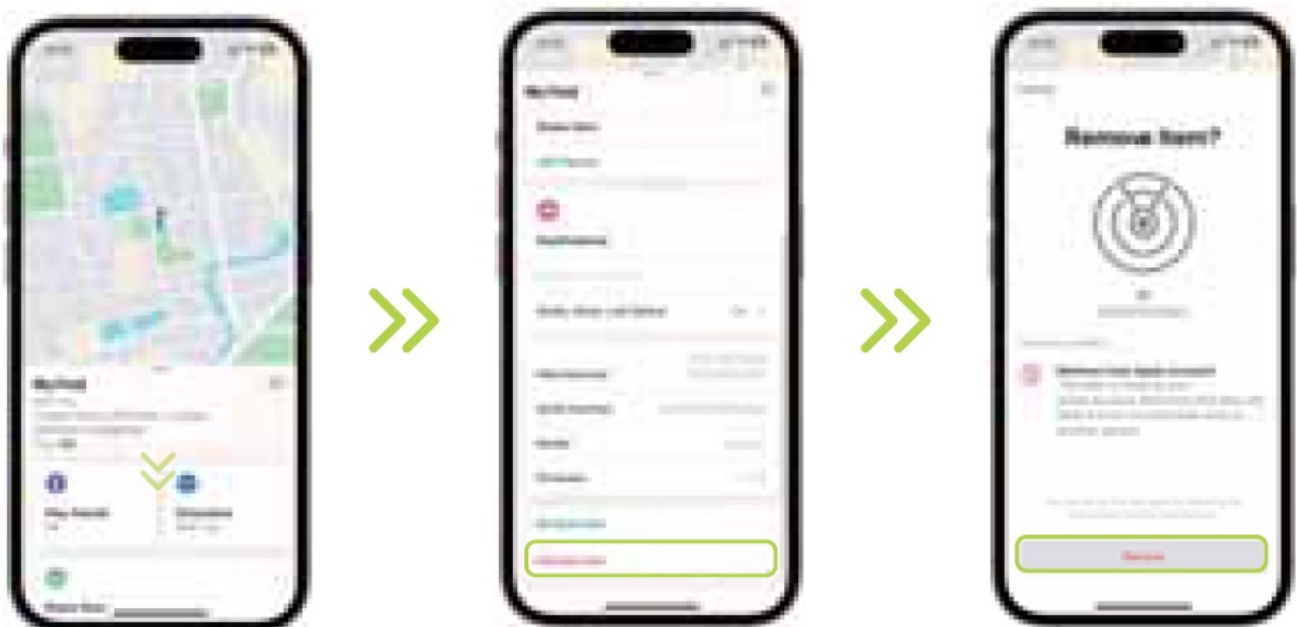
1. Open Find My app and select the “Items” tab or open the Find Items app on your Apple Watch.
2. Tap on your Smart Bluetooth Finder from the list.
3. Click “Directions” and follow the distance shown on the map to find the Smart Bluetooth Finder;
4. Tap “Play Sound” to make your Smart Bluetooth Finder beep.

5. Tap “Stop Sound” to stop the beeps once you find.

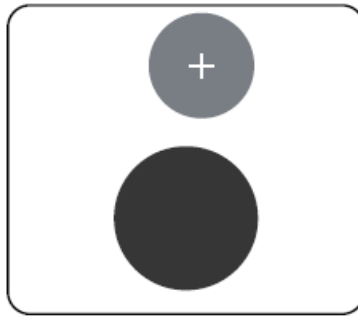
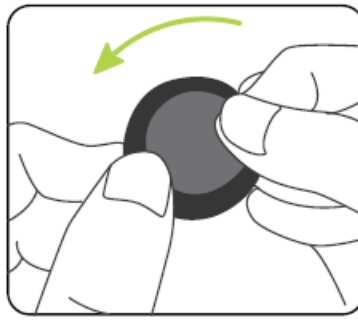


## PRODUCT REMOVE BINDING

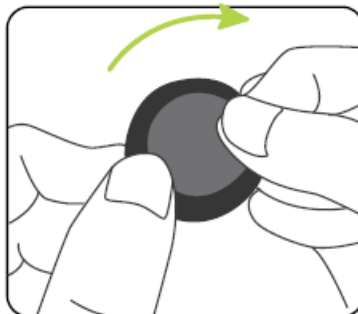
1. On the Device TAB page, slide down the menu and click “Remove Item”.
2. Confirm the device and account information that has been bound to avoid false removal.
3. Finally, click “Remove” to confirm.



## BATTERY REPLACEMENT



1. Turn counterclockwise to open
2. Put the battery in with the positive polarity (+) facing up
- 3.



Turn clockwise to close

### **ENABLING “NOTIFY WHEN LEFT BEHIND”**

1. Open Find My app and select the “Items” tab or open the Find Items app on your Apple Watch.
2. Tap on your Smart Bluetooth Finder from the list.
3. Under “Notifications” enable the “Notify When Left Behind” toggle.
4. You will receive a notification when you leave your Smart Bluetooth Finder behind and it’s no longer in range of your device.

### **ENABLING “NOTIFY WHEN FOUND”**

1. Under “Notifications”, enable the “Notify When Found” toggle.
2. When your Smart Bluetooth Finder is seen by another Find My network device, you will receive a notification of its location.

**\*Note:** “Notify when found” can only be activated when your Smart Bluetooth Finder is out of range.

## ENABLING “LOST MODE”

1. Open Find My app and select the “Items” tab or open the Find Items app on your Apple Watch.
2. Tap on your Smart Bluetooth Finder from the list.
3. Under “Lost Mode” tap “Enable”.
4. A screen detailing Lost Mode will pop up, tap “Continue”.
5. Enter your phone number or email address and tap “Next”.
6. You may enter a message that will be shared with the person that finds your item.
7. Tap “Activate” to enable “Lost Mode”.

**\*Note:** When “Lost Mode” is enabled, “Notify When Found” is automatically enabled.

**\*Note:** When “Lost Mode” is enabled, your Smart Bluetooth Finder is locked and cannot be paired to a new device.

## REMOVE THE SMART BLUETOOTH FINDER FROM MY APP

1. Open Find My app and select the “Items” tab.
2. Tap on your Smart Bluetooth Finder from the list.
3. Please ensure “Lost Mode” is disabled.
4. Scroll to the bottom of the screen and tap “Remove Item”.
5. A summary will open, tap “Remove” to confirm.
6. After successfully removing the Smart Bluetooth Finder from Find My app, open the case and remove the battery.
7. Insert the battery and hear a sound. This sound indicates that the battery is connected. When you hear a sound, repeat the operation for four more times: remove the battery, insert it, You should hear a sound every time you Insert the battery; A total of five sounds will be heard during the whole process. The fifth tone is different from the first four.
8. The Smart Bluetooth finder is now reset and ready to be paired to a new Apple ID.

## UNWANTED TRACKING

**If any Find My network accessory separated from its owner is seen moving with you over time you’ll be notified in one of two ways:**

1. If you have an iPhone, iPad, Find My will send a notification to your Apple device. This feature is available on iOS or iPadOS 14.5 or later.
2. If you don’t have an iOS device or a smartphone, a Find My network accessory that isn’t with its owner for a period of time will emit a sound when it’s moved.

These features were created specifically to discourage people from trying to track you without your knowledge.

## SAFETY INSTRUCTIONS

- Avoid moisture, Do not use aerosol, solvent or abrasive agents to clean the product.

- Keep out of reach of children to avoid accidental swallowing.
- The product has built-in battery, please stop use when it is swollen.
- Do not expose the product to excessive temperature.
- Stop using when the product is submerged.

## ABOUT APPLE FIND MY

The Apple Find My network provides an easy, secure way to locate compatible personal items using the Find My app on your iPhone, iPad, Mac, or the Find Items app on Apple Watch. To use the Apple Find My app to locate this item, the latest version of iOS, iPadOS, or macOS is recommended. The Find Items app on Apple Watch requires the latest version of watch OS. Use of the Works with Apple badge means that a product has been designed to work specifically with the technology identified in the badge and has been certified by the product manufacturer to meet Apple Find My network product specifications and requirements. Apple is not responsible for the operation of this device or use of this product or its compliance with safety and regulatory standards. Apple, Apple Find My, Apple Watch, Find My, iPhone, iPad, iPados, Mac, macOS and watch OS are trademarks of Apple Inc.

## FCC COMPLIANCE STATEMENT

This device complies with Part 15 of the FCC Rules.

### Operation is subject to the following two conditions:

1. This device may not cause harmful interference, and
2. This device must accept any interference received, including interference that may cause undesired operation.

**WARNING:** Changes or modifications not expressly approved by the party responsible for compliance could void the user's authority to operate the equipment.

**NOTE:** This equipment has been tested and found to comply with the limits for a Class B digital device, pursuant to Part 15 of the FCC Rules. These limits are designed to provide reasonable protection against harmful interference in a residential installation. This equipment generates uses, and can radiate radio frequency energy and, if not installed and used in accordance with the instructions, may cause harmful interference to radio communications. However, there is no guarantee that interference will not occur in a particular installation. If this equipment does cause harmful interference to radio or television reception, which can be determined by turning the equipment off and on, the user is encouraged to try to correct the interference by one or more of the following measures:

1. Reorient or relocate the receiving antenna.
2. Increase the separation between the equipment and receiver.
3. Connect the equipment into an outlet on a circuit different from that to which the receiver is connected.
4. Consult the dealer or an experienced radio/TV technician for help.

All the images

Omnibar is a trademark of Omnibar LLC. All the images and text in this user guide are the copyright of Omnibar. The photos and illustrations in this guide may differ from the actual product. The device has been evaluated to meet general RF exposure requirement. The device can be used in portable exposure condition without restriction.

## WEEE INFORMATION



Disposal and recycling information This product and battery should not be used as household garbage or thrown into the fire. When you decide to dispose of the product and battery, please handle the battery

according to the local environment all laws to avoid explosion.



**WARNING:** Do not disassemble, crush, or expose to fire or high temperatures. If significant swelling occurs, discontinue use immediately. Never use after submersion in water.

Only suitable for safe use in non-tropical climates

Made in China

## LIST OF TOXIC AND HAZARDOUS SUBSTANCES IN ELECTRONIC PRODUCTS

	Poisonous Or <b>Harmful</b> Substance Or Element					
	(Pb)	(Hg)	(Cd)	(Cr(VI))	(P88)	(PBL-'E)
Equipment		0	0	0	0	0

This form is prepared in accordance with SU/T 11364

O: indicates that the content of the hazardous substance in all homogeneous materials of the component is below the limit requirements stipulated in GB/T 26572.

X: indicates that the content of the hazardous substance in at least one homogeneous material of the component exceeds the limit requirements stipulated in GB/T 26572.

For the parts marked "X" in the table, the replacement of hazardous substances cannot be realized due to the limitation of global technological development level. The product you purchase may not contain all of the above components.



The number in this label indicates that the product has an environmental protection service life of 10 years under normal use condition. Some parts may also have an environmental service life label. and the number in the label shall prevail.

## WARRANTY

This device has a 1-year warranty, covering 12 months from the date of purchase (the "warranty period"). During the warranty period, if a device failure occurs under normal use due to a manufacturing defect, Omnibar will repair or replace the device. The company reserves the right to verify that proper use and maintenance guidelines were followed.

### CONDITIONS THAT VOID THIS WARRANTY:

1. Unauthorized repair, disassembly, or alteration of any kind.
2. Evidence of abnormal usage or misuse.
3. Damage from dropping, abuse, or negligence.
4. Damages caused by failure to follow the operating instructions.
5. Tampering with the product's original serial number label and other similar markings.
6. Fake products, including those indicated by a missing product serial number or nonconformity between the product model and serial number.
7. Improper storage, such as long-term exposure to humidity or temperatures outside the parameters specified in the technical specifications of this user's guide.
8. Expiration of the product warranty.

**FORCE MAJEURE:** Omnibar shall not be liable for any failure or delay in performing any of its obligations under



this warranty if such failure or delay is caused by or results from events beyond its reasonable control, including, but not limited to:

- A. Natural disasters (e.g., earthquakes, floods, hurricanes, wildfires)
- B. Acts of God
- C. War, invasion, or acts of terrorism
- D. Civil unrest, riots, or strikes
- E. Government actions, regulations, or restrictions
- F. Epidemics, pandemics, or quarantines
- G. Power outages or electrical failures
- H. Supply chain disruptions

Dear user, this warranty card is your future warranty application voucher, please cooperate with the seller to fill in and properly Keep it for later!


User information			
User name		E-mail	
Contact Number		Zip code	
Address of correspondence			
Product Information			
Product name		Model number	
Product barcode/number/batch number			
Seller information			
Name			
Address			
Contact Number		Zip code	
Date of sale		Invoice number	
Remarks			

The above information shall be filled in by the buyer

+1 [208-252-5229](tel:208-252-5229)

[www.omnibar.com](http://www.omnibar.com)

## Documents / Resources

	<a href="#">OMNIBAR AT53A Swift Tag</a> [pdf] User Guide AT53A, 2BM7E-AT53A, AT53A-B60D, AT53A Swift Tag, AT53A, Swift Tag, Tag
---	--

## References

- [User Manual](#)

[Manuals+](#), [Privacy Policy](#)

This website is an independent publication and is neither affiliated with nor endorsed by any of the trademark owners. The "Bluetooth®" word mark and logos are registered trademarks owned by Bluetooth SIG, Inc. The "Wi-Fi®" word mark and logos are registered trademarks owned by the Wi-Fi Alliance. Any use of these marks on this website does not imply any affiliation with or endorsement.