


Omni
Smart Home 4 Gang
WIFI Smart Switch
Modules



OMNI Smart Home 4 Gang WIFI Smart Switch Modules User Guide

[Home](#) » [OMNI Smart Home](#) » OMNI Smart Home 4 Gang WIFI Smart Switch Modules User Guide 

Contents

- [1 OMNI Smart Home 4 Gang WIFI Smart Switch Modules](#)
- [2 Specifications](#)
- [3 Product Usage Instructions](#)
- [4 Features of a WiFi Smart Switch Module](#)
- [5 Benefits of controlling your appliances remotely\](#)
- [6 How does it work?](#)
- [7 Frequently Asked Questions](#)
- [8 Documents / Resources](#)
 - [8.1 References](#)

Omni

OMNI Smart Home 4 Gang WIFI Smart Switch Modules



Specifications

- **Product Name:** Switch Module
- **Function:** Electrical signal transmission
- **Compatibility:** Check compatibility with your network device
- **Protection:** Electrostatic Discharge (ESD) sensitive
- **Warranty:** Opening the module voids warranty

Product Usage Instructions

Electrical Hazard

Before installing, removing, or servicing the module:

- Ensure the network device is turned off and unplugged.
- Avoid working on high-voltage circuits to prevent electric shock.

Electrostatic Discharge (ESD) Protection

To prevent damage due to ESD:

- Use appropriate ESD protection measures like a grounding strap.
- Work on an anti-static surface to avoid static electricity buildup.

Physical Damage

Handle switch modules with care:

- Avoid impacts, falls, or bending of pins and contacts.

- This helps prevent malfunctions or failures of the module.

Do Not Disassemble

Important precautions to follow:

- Do not open or disassemble the switch module.
- There are no user-serviceable parts inside to prevent damage.

Compatibility Risk

Ensure proper compatibility:

- Only use switch modules compatible with your network device.
- Incorrectly inserted modules can lead to network disruptions and device damage.

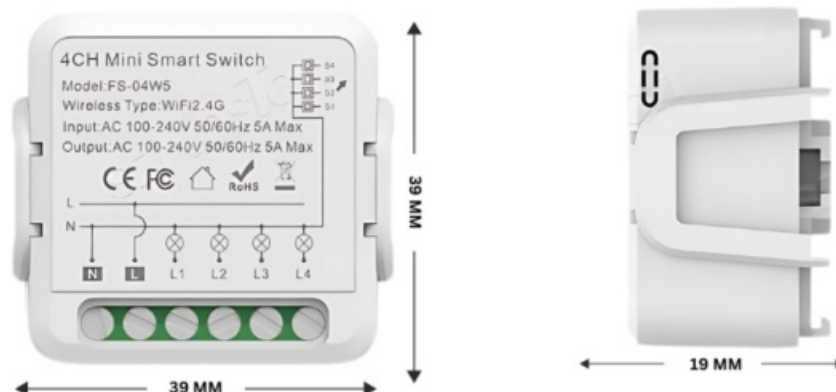
WiFi Smart Switch Module – 4 Gang

- 73 people are viewing this product right now
- 65 items sold in last 3 days
- Wifi Switch Module with 4 gang
- Control upto 4 devices through Mobile
- 2 way Control
- Tuya smart life

Categories: Smart Apartment Automation, Smart Circuit Breaker & Energy Analyser Meters, Smart Home Lighting Automation, Smart Switch Modules, Smart touch Light Switchplates & Smart wall Socke

Wifi Smart Switch Module – Smart remote switch for electronic appliances

In today's world, technology has brought about several advancements that have made our lives easier and more comfortable. One such innovation is the WiFi smart switch module. This module allows you to control the lighting and other electronic devices in your home using your smartphone or voice command. In this article, we will discuss the WiFi smart switch module, its features, benefits, and how it works.



What is a WiFi Smart Switch Module?

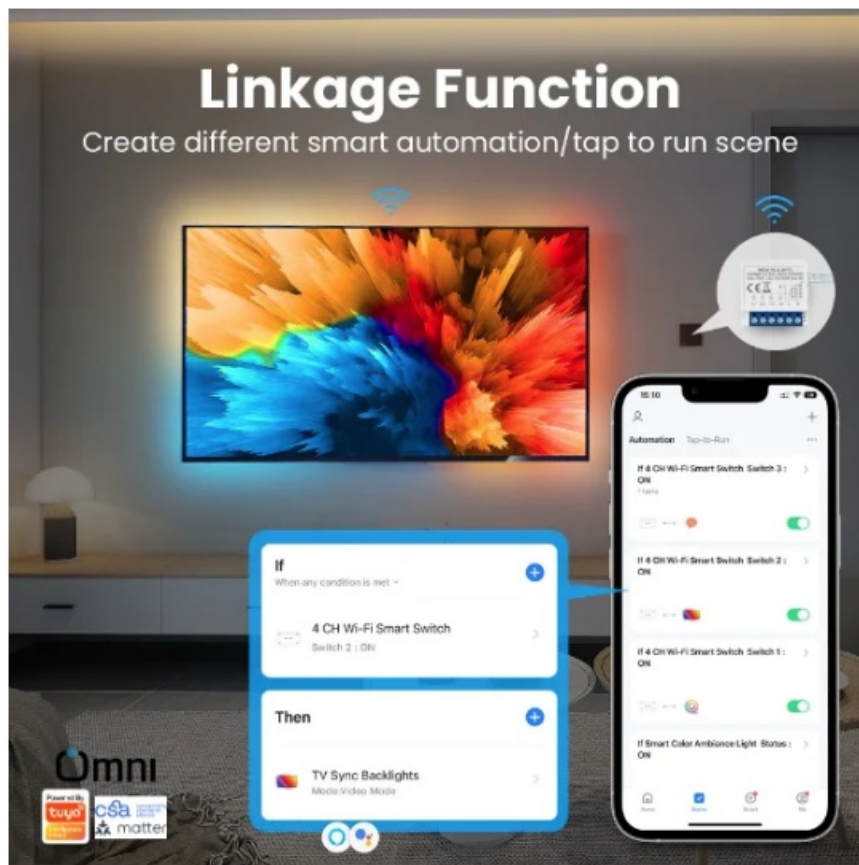
A WiFi smart switch module is a small device that is used to control the lighting and electronic devices in your home. It is a switch that is connected to your WiFi network, allowing you to control it remotely through your smartphone. This means that you can turn on or off the lights in your home, control the temperature of your air conditioner, or even turn on your coffee maker from anywhere in the world.

Features of a WiFi Smart Switch Module



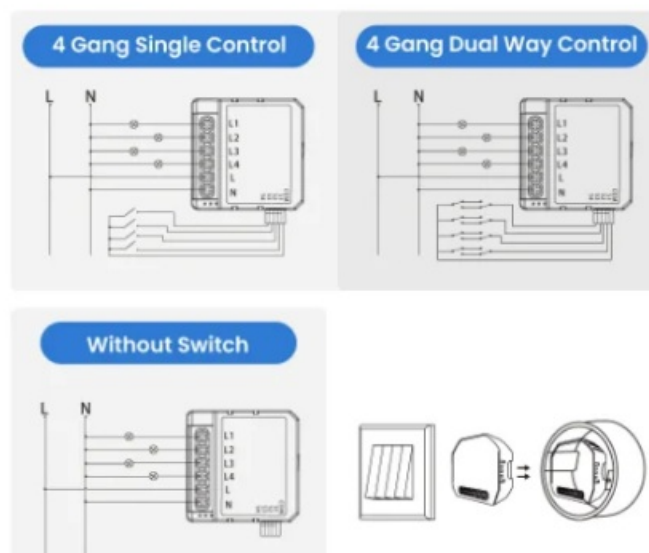
1. Remote Control: One of the most significant features of the WiFi smart switch is that you can control your devices from anywhere in the world using your smartphone.
2. Voice Control: It comes with voice control features that allow you to control your devices using your voice.
3. Timers and Schedules: You can set up timers and schedules for your devices, allowing them to turn on or off automatically at specific times.
4. Energy Monitoring: Some models come with energy monitoring features that allow you to monitor the energy usage of your devices.
5. Compatibility: It is with popular virtual assistants such as Google Assistant, Amazon Alexa, and Apple HomeKit.

Benefits of controlling your appliances remotely\



1. Convenience: With a WiFi smart switch module, you can control your devices from anywhere, making your life more convenient.
2. Energy Savings: By monitoring the energy usage of your devices, you can identify areas where you can save energy and reduce your electricity bills.
3. Safety: With the ability to turn off devices remotely, you can ensure that your home is safe even when you are away.
4. Customization: With the ability to set timers and schedules, you can customize the operation of your devices to suit your needs.

How does it work?



The wifi smart switch module connects to your home's WiFi network and communicates with your smartphone using an app. Once connected, you can control the switch remotely through the app. Some models also come with voice control features that allow you to control the switch using your voice.



To install it, you will need to replace your existing switch with the smart switch module. The installation process is straightforward, and we are available for detailed instructions.

Conclusion

The WiFi smart switch is a revolutionary device that has made our lives more convenient and comfortable. With its remote control, voice control, timers, and energy monitoring features, it is an excellent addition to any smart home. If you're looking for a way to control your devices remotely, reduce your energy bills, and customize the operation of your devices, then a WiFi smart switch module is the perfect solution for you.

Omni Smart Home Automation Company, where technology meets innovation. Since our inception in 2015, we have been at the forefront of revolutionizing smart home and industrial automation in Pakistan.

- 312 Block J1, Johar Town, Phase 2, Off Canal Road, Lahore, Pakistan
- Suite 401, Building 10, Giga Downtown, DHA Phase 2, Islamabad, Pakistan

Frequently Asked Questions

Q: Can I use the switch module with any network device?

A: No, it is essential to use switch modules that are compatible with your specific network device to avoid disruptions and damage.

Q: What should I do if I encounter an electrostatic discharge?

A: If you encounter ESD, immediately ground yourself and avoid touching the module until proper precautions are taken to prevent damage.

Documents / Resources



[OMNI Smart Home 4 Gang WIFI Smart Switch Modules](#) [pdf] User Guide
4 Gang WIFI Smart Switch Modules, 4 Gang, WIFI Smart Switch Modules, Switch Modules, Modules

References

- [User Manual](#)

[Manuals+](#). [Privacy Policy](#)

This website is an independent publication and is neither affiliated with nor endorsed by any of the trademark owners. The "Bluetooth®" word mark and logos are registered trademarks owned by Bluetooth SIG, Inc. The "Wi-Fi®" word mark and logos are registered trademarks owned by the Wi-Fi Alliance. Any use of these marks on this website does not imply any affiliation with or endorsement.