

OMEGA VSJ843R VERTICAL MASTICATING JUICER



Omega VSJ843R Vertical Masticating Juicer User Manual

[Home](#) » [Omega](#) » Omega VSJ843R Vertical Masticating Juicer User Manual 

Contents

- 1 Omega VSJ843R Vertical Masticating Juicer
- 2 SAFETY FIRST
- 3 KNOW YOUR OMEGA
- 4 QUICK START ASSEMBLY
- 5 HOW TO ASSEMBLE
- 6 OPERATING INSTRUCTIONS
- 7 SPINNING BRUSH ASSEMBLY, DISASSEMBLY AND WASHING
- 8 STERILIZATION & EASY CLEANING
- 9 PRECAUTIONS FOR SAFE USE
- 10 TROUBLESHOOTING
- 11 PRODUCT SPECIFICATIONS
- 12 RECIPES
- 13 FREQUENTLY ASKED QUESTIONS
- 14 VIDEO – PRODUCT OVERVIEW
- 15 References



Omega VSJ843R Vertical Masticating Juicer



SAFETY FIRST

When using electrical appliances, basic safety precautions should always be followed including the following.

1. READ ALL INSTRUCTIONS BEFORE USING.
2. To protect against electrical shock, do not immerse cord, plug, or main body (motor) in water or other liquid.
3. Close supervision is necessary when any appliance is used by or near children.
4. Unplug from outlet before assembling, before taking off parts, before cleaning and when not in use.
5. Avoid contact with moving parts.
6. Do not operate any appliance with a damaged cord or plug or after the appliance malfunctions or has been damaged in any manner. Return appliance to the manufacturer (see warranty) for examination, repair, or electrical or mechanical adjustment.
7. The use of attachments not recommended or sold by manufacturer may cause fire, electric shock or injury.
8. Do not let cord hang over edge of table or counter or touch heated surfaces.
9. Always make sure juicer locking clip is locked when juicer is in operation.
10. To disconnect, press/switch OFF then remove plug from wall outlet. Make sure the motor stops completely before disassembling.
11. Do not put your fingers or other objects into the juicer while it is in operation. If food becomes lodged in opening, use food pusher or another piece of fruit or vegetable to push down the lodged food. When this method is not possible, turn off the machine, remove the plug from wall outlet and disassemble juicer to remove the remaining

food.

12. Do not use outdoors.
13. Do not place on or near a hot gas or electric burner or in a heated oven.
14. Do not use appliance for anything other than its intended use.
15. Keep the appliance clean. Refer to the Care & Cleaning instructions in this manual.

SAVE THESE INSTRUCTIONS

KNOW YOUR OMEGA



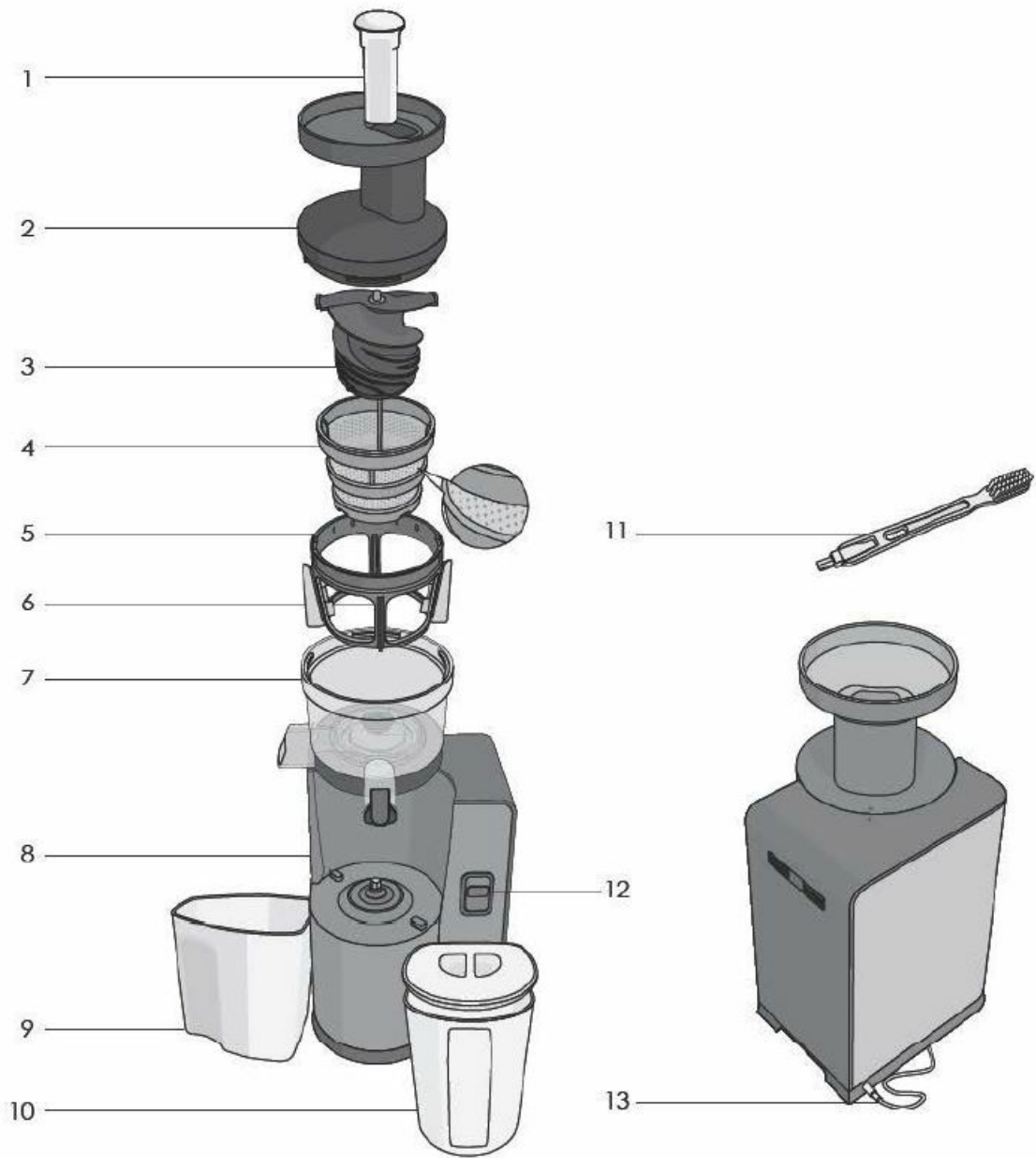
- A Pusher
- B Hopper
- C Wide Feed Chute
- D Safety Locking System
- E Auto Cleaning System
- F Pulp Outlet
- G High Performance Motor
- H Sturdy Nonslip Feet
- I Ultem Juice Screen
- J On/Off
- K Juice Flap
- L Heavy Duty Ultem Auger



NOT SHOWN

- Juice Container
- Pulp Container

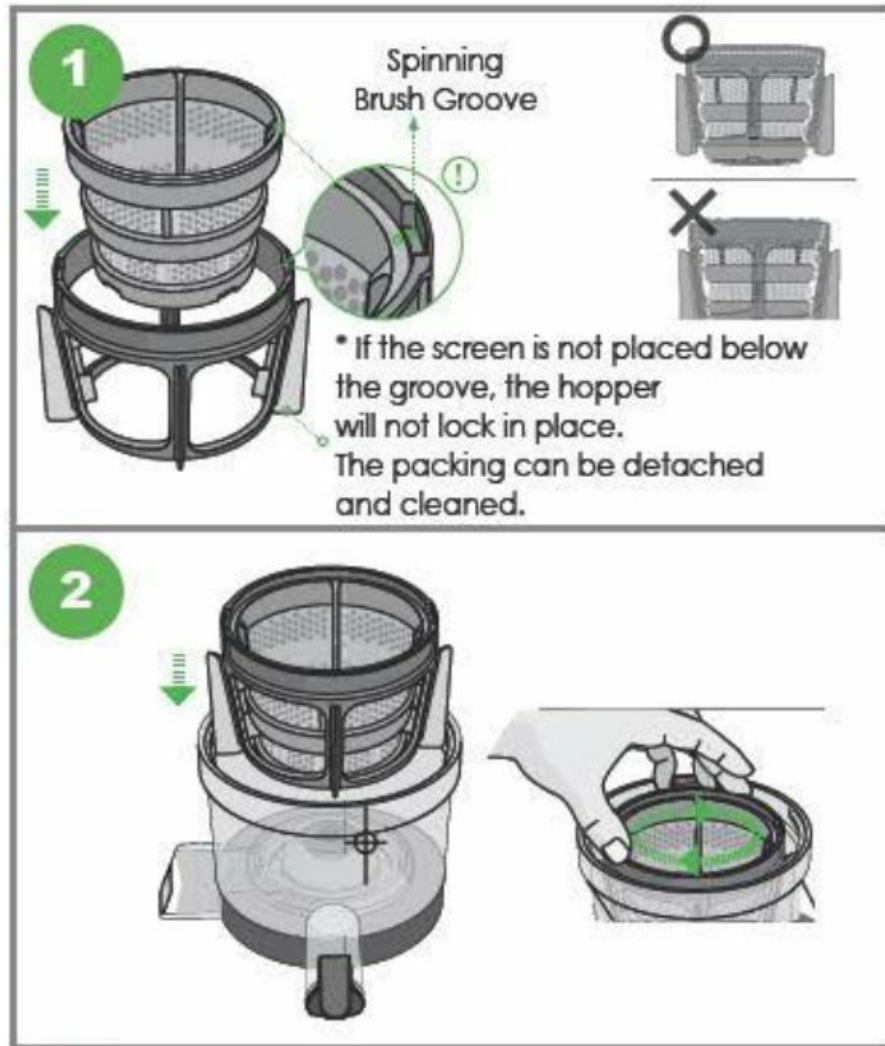
QUICK START ASSEMBLY



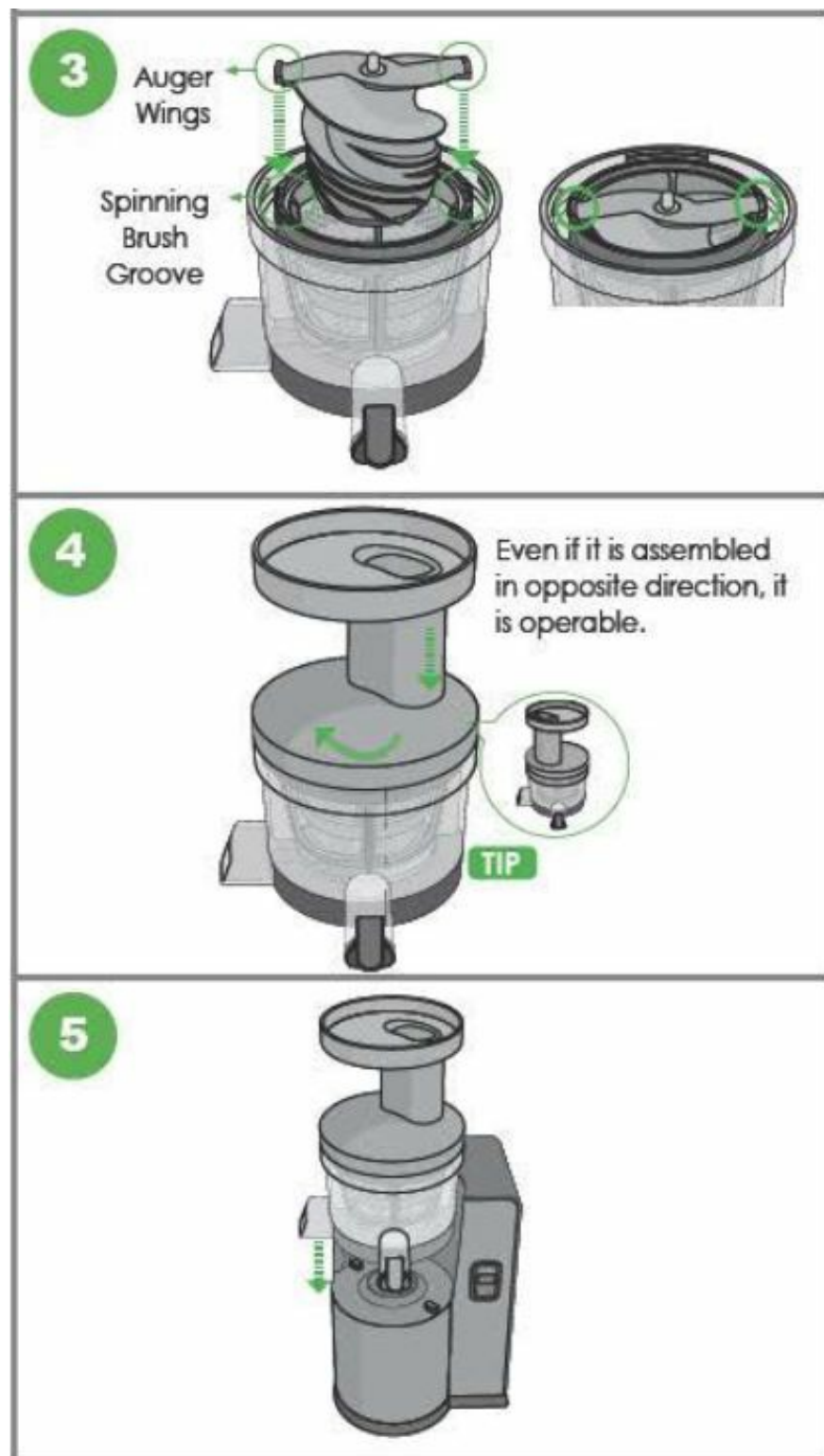
1. Pusher
2. Hopper
3. Auger
4. Screen
5. Spinning Brush
6. Silicon Brush
7. Juice Bowl
8. Base
9. Pulp Container
10. Juice Cup
11. Cleaning Brush
12. Operating Switch
13. Power Cord

HOW TO ASSEMBLE

1. Assemble the screen. The top of the screen must sit below the grooves on the spinning brush, as shown in the picture. Otherwise, the chamber set will not close properly.
2. Place the assembled silicone brush and screen into the juice bowl. Move it left to right until it clicks into place.

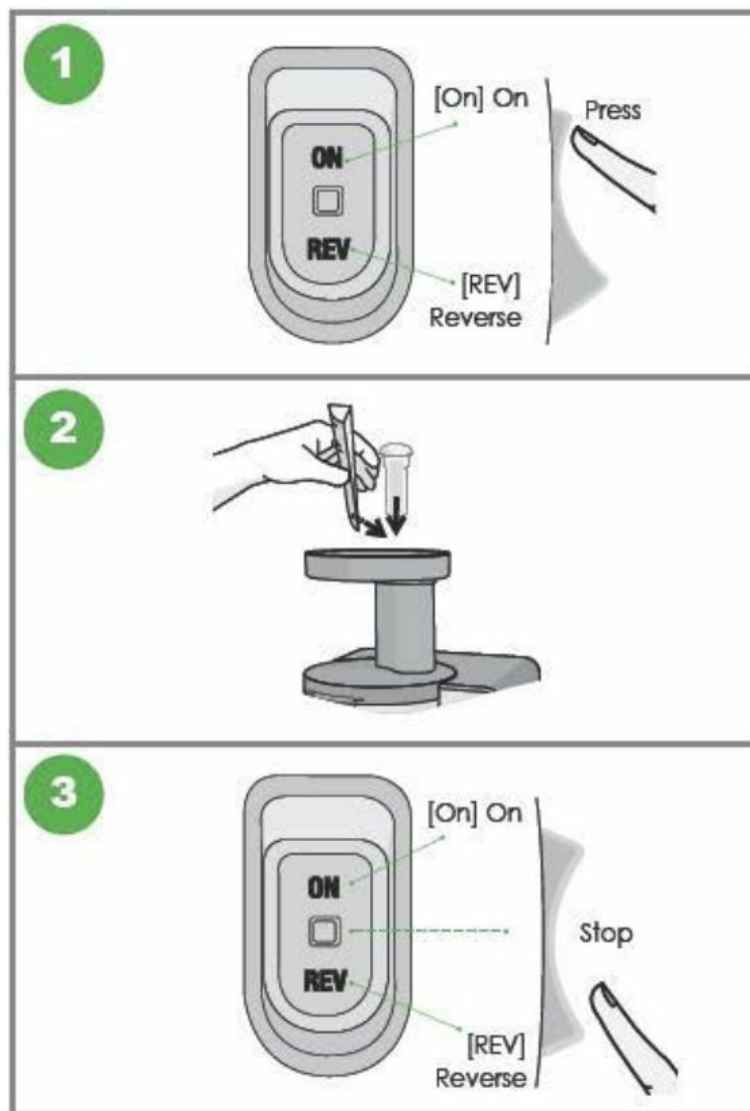


3. Next place the auger inside the screen. Align the augers wings with the grooves on the spinning brush.
4. Place the hopper onto the juice bowl. Turn the hopper clockwise until it is locked completely.
5. Mount the assembled juice bowl chamber onto the motor base.



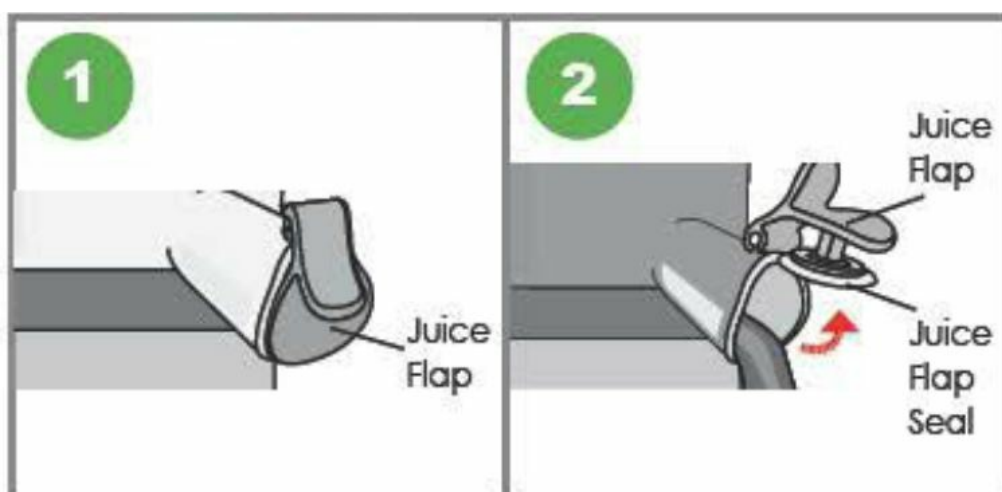
OPERATING INSTRUCTIONS

ON/REV BUTTON



1. Press [ON] button to start.
 2. Gradually put the ingredients into the hopper chute and press down with the pusher.
 3. After the extraction is complete, place the switch in stop position to stop.
- WARNING** When using [ON] or [Rev] button, make sure that the auger stops completely.

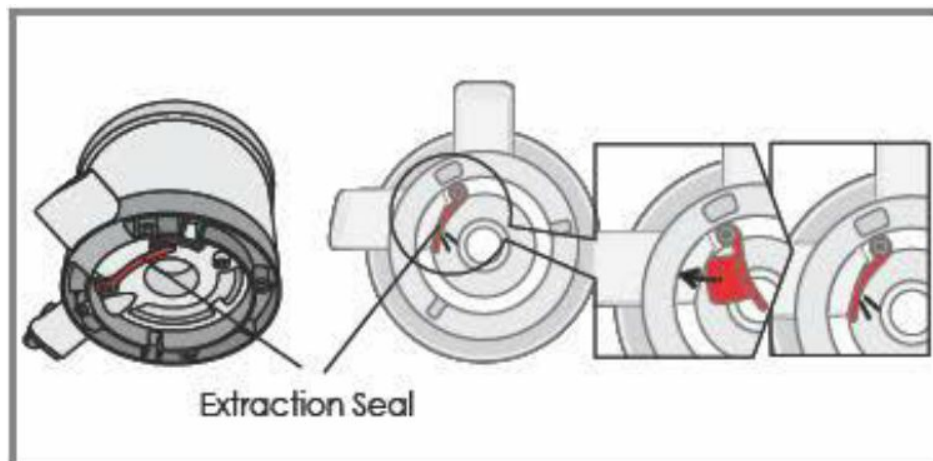
JUICE FLAP



1. Close the juice flap to mix juice inside the bowl while juicing.

2. Open the juice flap to release mixed juice into a glass. Close the flap to save juice for another serving.

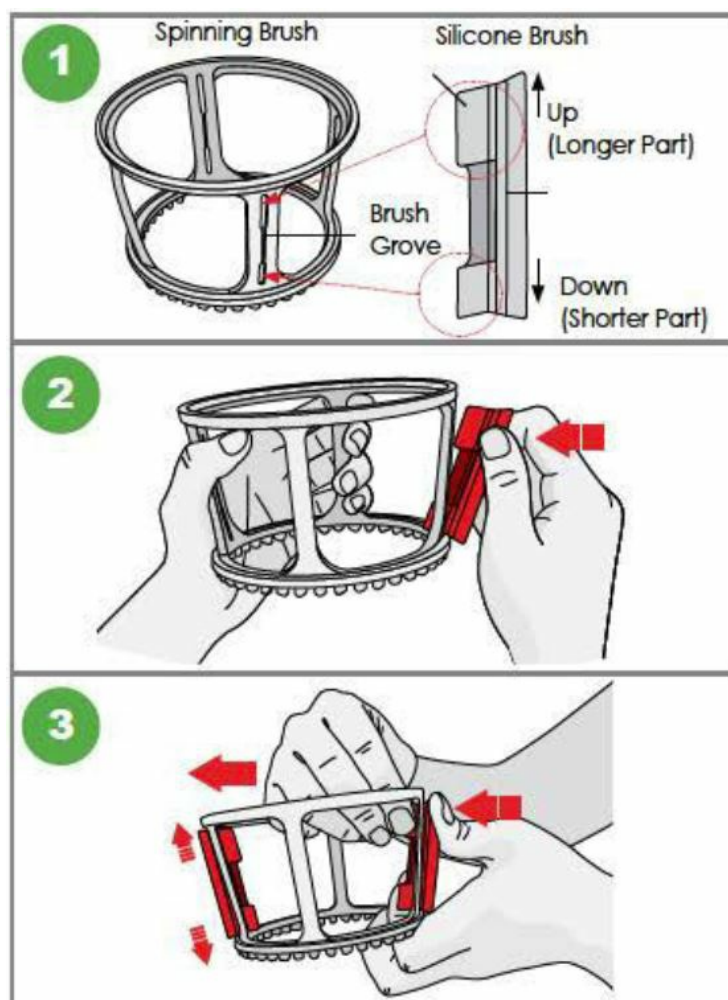
EXTRACTION SEAL



- The silicone pulp stopper is located at the bottom of the Juice Bowl. Before use, make sure the seal is closed. For cleaning, open the extraction seal and wash out trapped food.

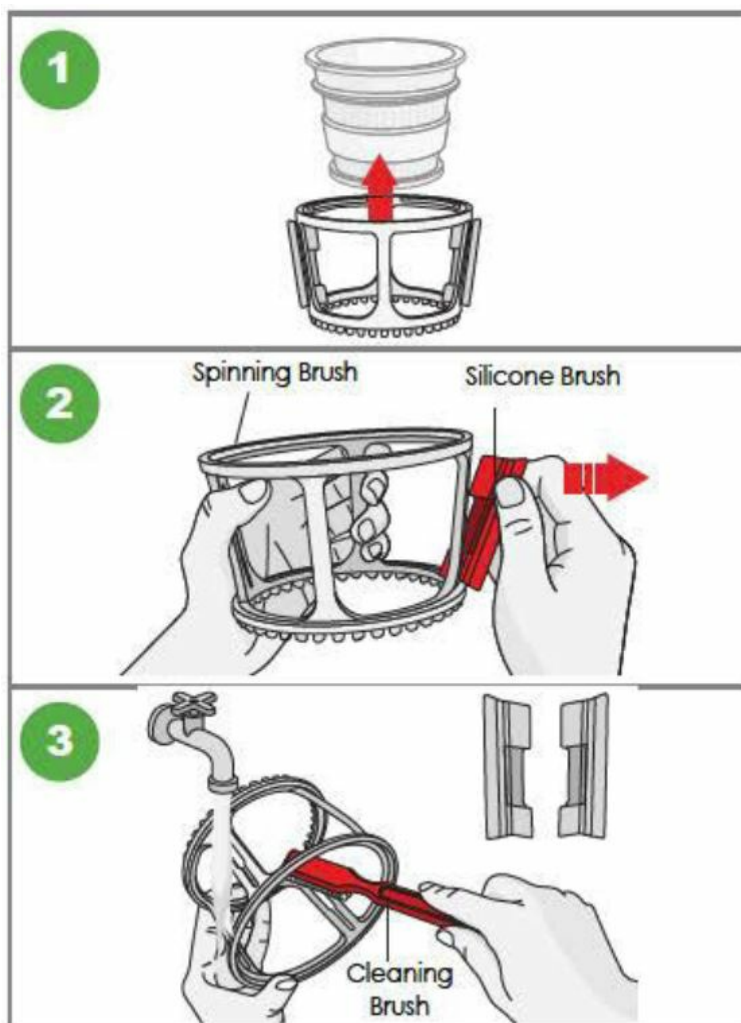
SPINNING BRUSH ASSEMBLY, DISASSEMBLY AND WASHING

SPINNING BRUSH ASSEMBLY



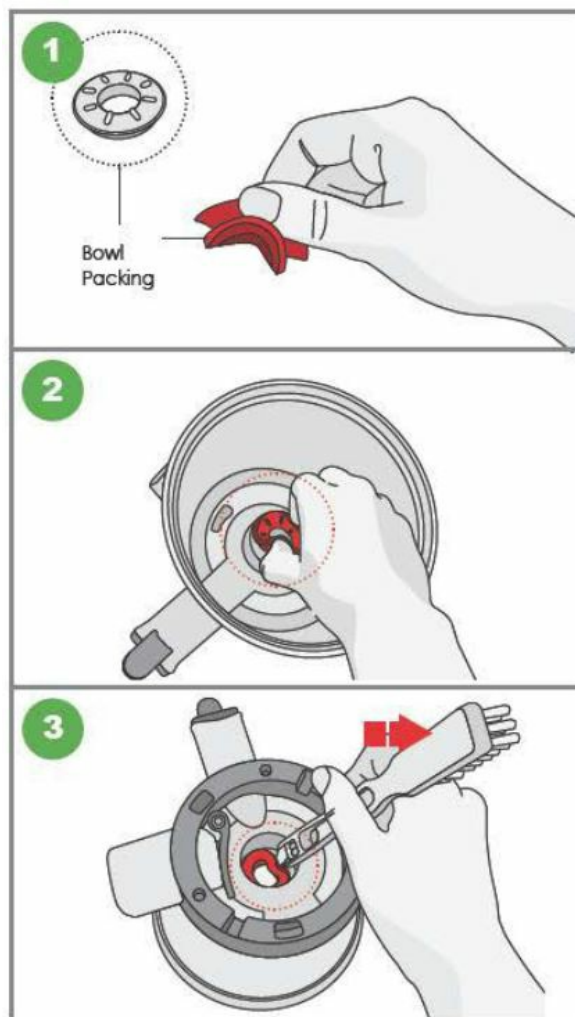
1. Check the groove of the spinning brush and the direction of silicone brush.
 - As shown to the left, let groove inserts face the spinning brush.
2. Insert the silicone brush into the spinning brush. The longer part should face upward. Hold the outer wing of silicone brush with your thumb and index finger and insert silicone brush into the groove of spinning brush.
3. **Pull tight.**
 - Push silicone brush from the outer side of spinning brush and pull 'inner wing' in the direction of inside of the spinning brush with the other hand as shown to the left.
 - Pull it until you cannot pull it any longer. If unit is not fully assembled, there is a risk of breakage.

SPINNING BRUSH DISASSEMBLY AND WASHING



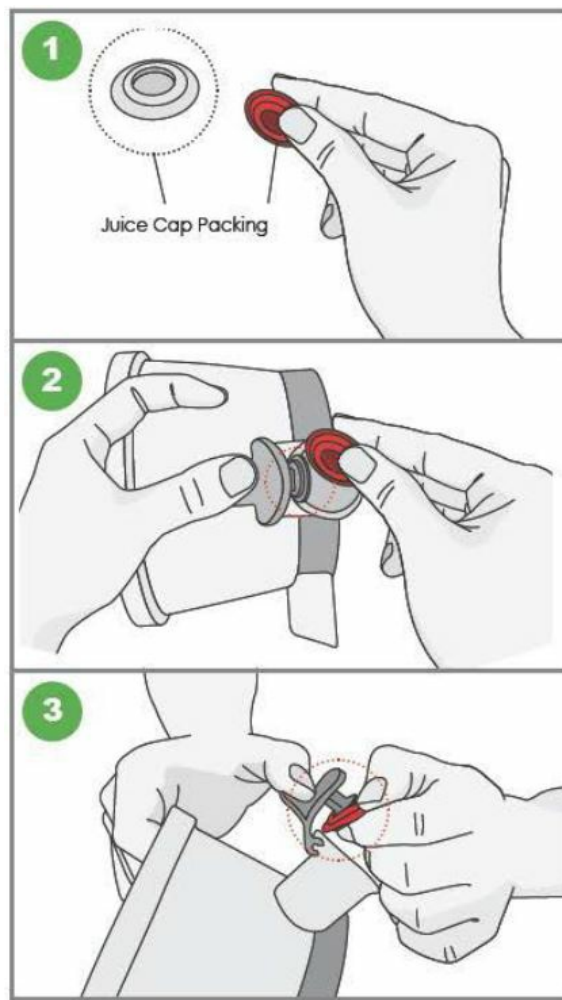
1. Remove the spinning brush from juicing screen.
2. Detach the silicone brush from spinning brush. As shown to the left, hold the outer part of silicone brush with your fingers and pull it out to the arrow direction. If pulling it by force, silicone brush may be torn or spinning brush may be damaged.
3. With cleaning brush, wash inside and outside of spinning brush under running water. Wash silicone brush in the same way under running water.

BOWL PACKING ASSEMBLY



1. As shown to the left in the dotted circle, let the protrusion part on the bowl packing face upward and hold it, like pinching, with your thumb and index finger.
2. Insert the bottom of the bowl packing into the bowl hole and fully press it down.
 - Do not insert whole part of bowl packing.
 - The upper part of the bowl packing must be shown.
3. If the bowl packing at the bottom of the bowl is not fully inserted and is bent, set it into place with the rotating attractor of the cleaning brush.

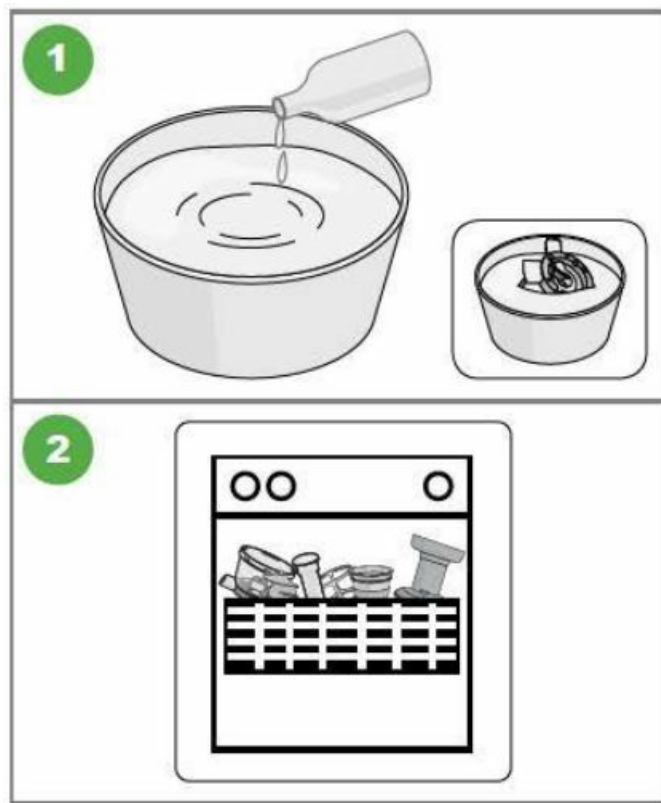
JUICE FLAP ASSEMBLY



1. Hold juice cap packing as shown to the left. The hole must be visible.
2. Open the juice cap and insert the juice cap packing to the top. Be careful not to drop the bowl.
3. Set the packing to seal off completely. If not completely sealed, juice may leak.

STERILIZATION & EASY CLEANING

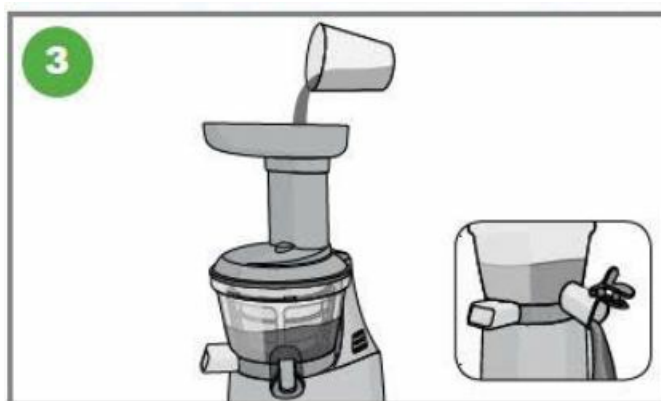
HANDWASH OPTION



1. You can thoroughly wash parts by immersing in warm water diluted with one or two drops of baking soda or dishwashing soap for about 30 minutes.
2. When finished using the Omega® Nutrition System, simply put parts into dishwasher, on top rack.

CLEANING BETWEEN RECIPES

3. When juicing multiple recipes successively, it is not necessary to disassemble and wash parts. Simply close the juice cap, pour water into hopper and operate the appliance. Open the juice cap and discharge the water. After you are done juicing for the day, disassemble and fully wash the bowl set.



PRECAUTIONS FOR SAFE USE

All users of this appliance must read and understand these safety precautions before operating.

SIGN SAMPLES

-  This sign indicates contents that may cause risk of a fire or an electrical shock.

Specific warnings are written in the sign.



- **This sign indicates prohibited acts.**

Specific prohibitions are written around or in the sign.



- **This sign indicates contents of regulating or directing actions.**

Specific prohibitions are written around or in the sign.

PRECAUTIONS

- **CAUTION**

Hazards or unsafe practices could result in minor personal injury or appliance damage.

- **DO NOT PLUG IN OR UNPLUG WITH WET HANDS.**

It may cause an electric shock or an injury.

- **DO NOT USE WITH OTHER THAN RATED VOLTAGE.**

It may cause an electric shock, a fire or abnormal performance. If the voltage is different, it may shorten the life of the motor or cause a failure.

- **PLUG THE POWER CORD CORRECTLY AND PUSH IT TIGHT IN A WALL SOCKET.**

It may cause electric shock or a fire.

- **IF THE SUPPLY CORD IS DAMAGED, IT MUST BE REPLACED BY THE MANUFACTURER, ITS SERVICE OR SIMILARLY QUALIFIED PERSONS IN ORDER TO AVOID A HAZARD.**

If the power cord is damaged, it may cause electric shock or a fire.

- **NEVER ALTER THE APPLIANCE. ALSO, DO NOT DISASSEMBLE OR REPAIR BY YOURSELF. DO NOT INSERT FINGERS, FOREIGN SUBSTANCES OR OBJECTS SUCH AS PINS INTO GAPS OR HOLES IN THE BASE.**

It may cause a fire, an electric shock or a failure. For any technical support, contact the authorized local Customer Care Center.

PRECAUTIONS FOR SAFE USE

- **DO NOT MOISTEN THE BASE OR SPLASH WATER ON THE BASE.**

Be careful not to let any liquids or other substances get into the switch on the appliance. DO NOT OPERATE THE SWITCH WITH WET HANDS. It may cause electric shock or a fire.

- **WHEN THE POWER CORD, WIRE IS BROKEN OR DAMAGED OR THE PLUG-IN PART BECOMES LOOSE, DO NOT OPERATE IT.**

It may cause an electric shock, a fire or an injury.

- **FOR SAFETY, MUST DO GROUND CONNECTION DO NOT DO THE GROUNDING ON GAS PIPE, PLASTIC WATER PIPE, TELEPHONE WIRE, ETC.**

It could cause an electric shock, a fire, or a malfunction and an explosion. Be sure to use the socket with ground connection.

- **NEVER DISASSEMBLE BOWL SET DURING OPERATION OR INSERT FINGERS, FOREIGN OBJECTS SUCH AS FORKS, SPOONS ETC. INTO FEEDING CHUTE OR JUICE SPOUT.**

It may cause an injury, an accident or a failure.

- **THIS APPLIANCE IS NOT INTENDED FOR USE BY PERSONS (INCLUDING CHILDREN) WITH REDUCED**

PHYSICAL, SENSORY OR MENTAL CAPABILITIES, OR LACK OF EXPERIENCE AND KNOWLEDGE, UNLESS THEY HAVE BEEN GIVEN SUPERVISION OR INSTRUCTION CONCERNING USE OF THE APPLIANCE BY A PERSON RESPONSIBLE FOR THEIR SAFETY.

Children should be supervised to ensure that they do not play with the appliance.

- **DO NOT OPERATE WITHOUT LOCKING THE HOPPER PROPERLY.**

It may cause an injury or a failure.

- **WHEN DETECTING A GAS LEAK, DO NOT INSERT THE POWER CORD INTO ITS SLOT. OPEN THE WINDOW TO VENTILATE FULLY AND IMMEDIATELY.**

It may cause an injury or a failure.

- **IF SCREW ROTATION IS STOPPED IN NORMAL OPERATION, PRESS [REVERSE/ REV] BUTTON AND HOLD FOR 2~3 SECONDS AND THEN AFTER REVERSE OPERATION IS COMPLETELY STOPPED, PRESS [ON] BUTTON AGAIN.**

If such a stop event continues during the operation, the parts may be damaged and performance may be deteriorated due to overheating in a motor. When the problem continues, immediately stop the appliance and contact the local Customer Care Center.

- **NEVER PUT A FINGER, A FORK OR A SPOON ETC. INTO JUICE SPOUT.**

It may cause an injury or a failure.

- **DURING THE OPERATION, DO NOT ATTEMPT TO MOVE THE BASE, DISASSEMBLE THE BOWL SET OR PARTS AND TRY TO LOCK THEM.**

It may cause an injury or a failure. Any act of event needed, switch off first and unplug the power cord.

- **WHEN USING THE APPLIANCE, BE CAREFUL OF A NECKTIE, LONG NECKLACE, SCARF ETC. BECOMING ENTANGLED INTO FEEDING CHUTE.**

It may cause an injury, a failure or a breakage.

- **PLACE THE APPLIANCE ON A FLAT AND STABLE SURFACE.**

It may cause an injury or a failure.

- **DO NOT OPERATE THE APPLIANCE FOR MORE THAN 30 MINUTES AT A TIME.**

It may cause a motor failure due to overheating. Cool it down sufficiently for 5 minutes and operate it again.

- **WHEN PLACING INGREDIENTS INTO THE FEEDING CHUTE, ONLY USE THE PUSHER PROVIDED.**

It may cause an injury or a failure.

- **DO NOT ALLOW A SEVERE SHOCK TO THE APPLIANCE OR DROP IT.**

It may cause an electric shock, a fire or damage

- **IF THE APPLIANCE GIVES OFF AN UNPLEASANT SMELL, EXCESSIVE HEATING, OR SMOKE, STOP USING IMMEDIATELY AND CONTACT THE LOCAL CUSTOMER CARE CENTER.**

When using a new appliance, it will give off a smell and the smell disappears naturally over time.

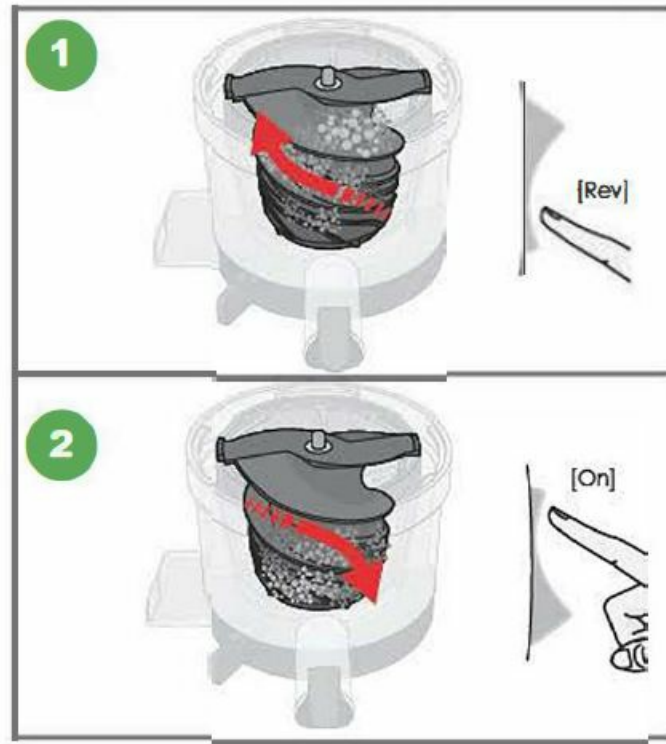
- **ALWAYS UNPLUG THE APPLIANCE AFTER USE. WHEN UNPLUGGING THE POWER CORD, MAKE SURE TO HOLD THE POWER CORD.**

If holding the wire to unplug, it may cause an electric shock or a fire.

- **THE APPLIANCE WEIGHS ABOUT 11.51 LB (5.2 KG). WHEN MOVING THE APPLIANCE, ENSURE TO MOVE IT HOLDING GRIPS TIGHTLY AT THE BASE IF THE BOTTOM WITH BOTH HANDS.**

If attempting to hold bowl or the edge of the base, the base may fall causing an injury or a failure.

IF THE AUGER STOPS WORKING

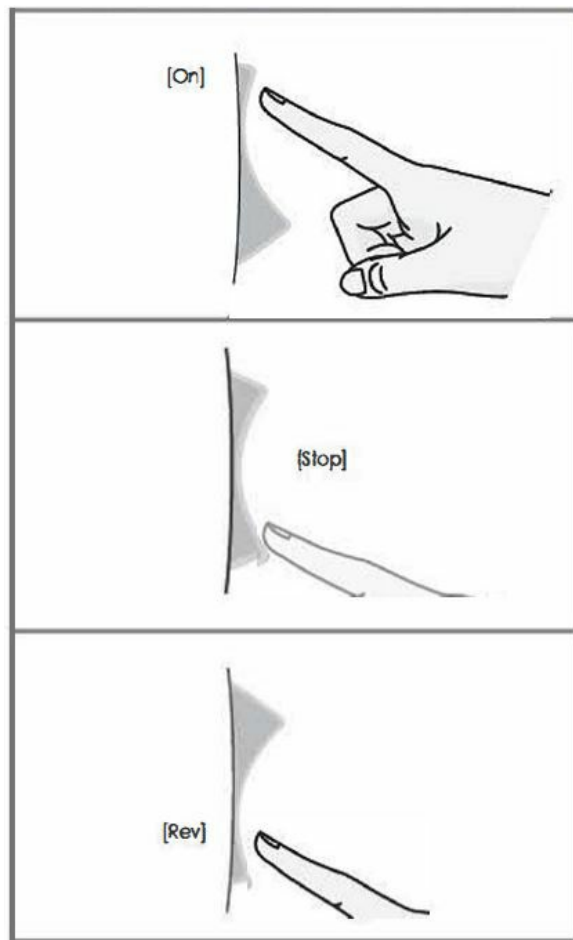


1. Press [Rev] button for 3 to 5 seconds, then release. When the [Rev] button is released, the auger will stop rotating. Repeat this 2 to 3 times. The [Rev] button pushes the ingredients upward releasing the food clog.
2. Press [ON] button to start. When using [ON] auger should rotate. Wait 2 to 3 seconds. Then press [REV] button. Repeat this 2 to 3 times. Make sure the auger stops completely after releasing the button.

Note: Even after following the directions above, if the juicer still doesn't work, please unplug the power cord, disassemble the chamber set and clean it. Then try again.



& CAUTION WHEN USING OPERATION BUTTON



To STOP the operation, press the [Rev] button quickly. The auger will rotate slowly then stop. After the auger rotation stops completely, you can press [ON] to continue operation as normal or hold down the [Rev] button to push ingredients upward.

HINTS & TIPS

- Use caution when juicing the following ingredients:
 - Fruits with seeds that are hard to chew should be pitted before extraction. Fruits such as plums, peaches, and apricots.
 - Stalk vegetables with strong fiber should be cut into smaller sizes of 1 to 2 inches before placing in the hopper. Vegetables such as water parsley, celery, fennel, etc.
 - Do not use sesame, coffee beans, bark of a tree, Chinese pepper, etc. which cannot be extracted.
 - Do not use fruits preserved in alcohol, sugar, honey, etc. It may cause damage or failure.
- Frozen fruit or withered ingredients stored in the refrigerator for a long time, may extract less amount of juice or may even be impossible to juice.
- Do not re-squeeze residue expelled through pulp outlet, except for soft fruits. Soft fruits can be re-squeezed.
- You can use the appliance to crush spices (garlic and red pepper).
- Do not use appliance to grind grains. It may cause damage or failure.
- We recommend you drink juice immediately after extraction.
- Do not use the appliance for more than 30 minutes continuously. It may cause failure due to overheating of the motor.

TROUBLESHOOTING

Please troubleshoot using the details below before contacting Omega Customer Service for repair or service. When contacting Omega for after-sales service, please have the manufacturer's serial number or bar code available.

The Appliance Does Not Work

- Make sure the power cord is plugged in correctly.
- Make sure the hopper is assembled correctly. If the hopper is not locked into place, the appliance will not operate.
- Make sure the appliance is assembled according to the instructions in this manual. Refer to the instructions.
- If the appliance still does not work, please contact Omega Customer Service for additional support.

The Hopper Does Not Open

- If there is a lot of pulp inside the chamber, press [On] to release the excess pulp.
- Check the appliance for any foreign substance or solid objects including seeds.
- Press [Rev] button to push up stuck ingredients.
- Do not attempt to open by force. If the hopper still does not open, please contact Omega Customer Service for additional support.

The Appliance Stops During Normal Operation

- Check for large pieces of food stuck in the appliance.
- Refer to the manual "If the Auger Stops Working" and follow the guideline for the [Rev] button.
- If the appliance still does not work, please contact Omega Customer Service for additional support.

Fine Lines or Scratch Marks around the Auger

- This is normal. Do not be concerned. These are molding marks resulting from the normal manufacturing process.

Juice Leaks Over the Base

- Check for an excessive amount of ingredients in the hopper chute.
- If you try to juice a large amount of food compared to the pulp outlet, the packing will be slightly pushed away. Juice may leak out of the gap.
- Do not force too much food into the juicer. Push food gradually for extraction.
- Check to make sure the juice flap is closed.

Juicer Shakes when In-Use

- This is normal as the auger rotates. It is not a malfunction. Hard ingredients such as carrots, potatoes, radishes, beets, etc. may cause shaking more so than soft ingredients.
- Depending on the firmness of the ingredient, there may be a more pronounced shaking of the motor.
- Slight shaking may be caused by the motor.

CONTACT US:

- **Customer Service:** 1-800-633-3401
- **Online:** www.OmegaJuicers.com/contact-omega-juicers

PRODUCT SPECIFICATIONS

- **Product Name** Vertical Juicer
- **Model Name** VSJ843Q & VSJ843R
- **Rated Voltage** 120 V
- **Rated Frequency** 60 Hz
- **Rated Power Consumption** 250 W
- **RPM** 43 rpm
- **Cord Length** 55" (1.4 m)
- **Motor** Single-phase induction motor
- **Fuse** 250 V 8 A
- **Weight** 11.5 lb (5.2 kg)
- **Outward Dimension**
 - 7" Width (178 mm)
 - 10" Depth (254 mm)
 - 16" Height (406 mm)
- **Rated Operating Time** Less than 30 minutes

For Recipes, visit www.OmegaJuicers.com/recipes

RECIPES

Clean Boost

What You'll Need:

- ½ a beetroot
- 5 spinach leaves
- ¼cabbage
- 1 broccoli stick
- ½ a grapefruit
- ½a lemon
- 1 orange
- 1 kiwi fruit
- 2 small pieces of ginger

How To Prepare:

- Cut product to fit into hopper.
- Juice in an Omega Juicer.

- Pour over ice.

Enjoy!

Australian Dream

What You'll Need:

- 2 beets (australian beetroot)
- 2 organic carrots
- 1 cup organic strawberries
- 2 cups kale leaves (6-8 leaves) (australia tuscan cabbage)

How To Prepare:

1. Wash all produce well.
2. Cut as needed to fit into hopper.
3. Juice in an Omega Juicer.
4. Pour over ice and enjoy!

Morning Glory Citrus

What You'll Need:

- 2 grapefruits (peeled)
- 1 red bell pepper
- 2 pears
- 6 carrots

How To Prepare:

- Wash all produce well.
- Juice all produce in an Omega Juicer and enjoy!

Serving Size: 16 – 18 oz.

Bursting with vitamin C and beta-carotene, as well as vitamins A & K and even copper.

Salsa in a Glass

What You'll Need:

- 2 Tomatoes
- ¼ Onion
- ½ Lime

- 1 Jalapeno Pepper
- 5 Sprigs of Fresh Cilantro

How To Prepare:

- Wash all produce well. Peel lime (optional).
- Add all ingredients into your Omega Juicer and juice.

Serve and enjoy!

Total Health Booster

What You'll Need:

- 1 medium apple, cored and cubed
- 2 medium soft pears,
• cored and cubed
- ½ cup fresh cherries (pits removed or frozen and thawed)

How To Prepare:

- In your Omega Juicer, juice apple, pears, and cherries.
- Before serving, garnish with fresh cherries, if desired.

Cukelear Power

What You'll Need:

- 1 cucumber
- 2 collard green leaves
- 1 handful of cauliflower florets
- ½ lemon (yellow rind removed)

How To Prepare:

1. Wash all produce.
2. Add all ingredients into your Omega Juicer and juice.
3. Pour into your glass and enjoy!

Tropical Morning

What You'll Need:

- 1 peach (remove pit)
- 1 mango (peeled and seed removed)

- 1 orange (skin removed)
- ½ cup coconut water
- 1 teaspoon agave nectar

How To Prepare:

1. 1 Cut produce to fit hopper.
2. 2 In your Omega Juicer, juice peach, mango and orange.
3. Add remaining ingredients and stir.
4. Serve chilled and garnish with a peach slice.

Apple & Kiwi Juice

What You'll Need:

- 2 apples
- 3 kiwis

How To Prepare:

1. Wash the apples, then remove the core and cut into quarters.
2. Peel the kiwis and chop into small pieces.
3. 3 Juice ingredients in your Omega Juicer.
4. Stir before drinking.

NOURISH YOUR BODY

Enrich Your Soul

Discover the complete line of Omega brand professional products at www.OmegaJuicers.com

- 6291 Lyters Lane
- **Harrisburg, PA 17111, USA**
- T 1800 633 3401 •
- F 717 561 1298

Omega

Congratulations!

CONGRATULATIONS on the purchase of your new Omega product. At Omega, we strive to develop technologically advanced machines that help deliver nutrition and flavor of the highest kind and closest to nature's purest form. We are driven by you, our brand supporters. Your enthusiasm helps us continue to reinvent and renew our line of juicers, high-speed blenders, and beverage equipment. Our team at Omega thanks you for supporting us for over 50 years!

Join us on Twitter @OmegaAppliances &/or on Facebook @OmegaJuicers

- **PRODUCT REGISTRATION, VISIT:** www.omegajuicers.com/omega-warranty-registration
- **RECIPES, VISIT:** www.omegajuicers.com/recipes
- **CUSTOMER SERVICE:** Call 1-800-633-3401 or **visit:** www.omegajuicers.com/contact-omega-juicers After using your Omega, we kindly ask you to rate the machine on www.OmegaJuicers.com

FREQUENTLY ASKED QUESTIONS

Omega VSJ843R Vertical Masticating Juicer

The Omega VSJ843R Vertical Masticating Juicer measures 8.5 inches in diameter, 7 inches in width, and 15.5 inches in height, making it compact and suitable for most kitchen countertops.

What is the voltage requirement for the Omega VSJ843R Vertical Masticating Juicer?

The Omega VSJ843R Vertical Masticating Juicer operates at a voltage of 120 volts, compatible with standard household electrical systems.

How much does the Omega VSJ843R Vertical Masticating Juicer weigh?

The Omega VSJ843R Vertical Masticating Juicer weighs 12.5 pounds, making it relatively lightweight for a masticating juicer.

Who is the manufacturer of the Omega VSJ843R Vertical Masticating Juicer?

The Omega VSJ843R Vertical Masticating Juicer is manufactured by The Legacy Companies USA, a reputable company known for producing high-quality kitchen appliances.

What is the model number of the Omega VSJ843R Vertical Masticating Juicer?

The model number of the Omega VSJ843R Vertical Masticating Juicer is VSJ843R, which is useful for identifying and ordering replacement parts or accessories.

How much does the Omega VSJ843R Vertical Masticating Juicer cost?

The price of the Omega VSJ843R Vertical Masticating Juicer is \$311.99, reflecting its premium quality and features.

What is the warranty period for the Omega VSJ843R Vertical Masticating Juicer?

The Omega VSJ843R Vertical Masticating Juicer comes with an impressive warranty of 15 years, demonstrating the manufacturer's confidence in its durability and performance.

What is the rated frequency of the Omega VSJ843R Vertical Masticating Juicer?

The rated frequency of the Omega VSJ843R Vertical Masticating Juicer is 60 Hz, ensuring smooth and consistent operation.

What is the rated operating time for the Omega VSJ843R Vertical Masticating Juicer?

The rated operating time for the Omega VSJ843R Vertical Masticating Juicer is less than 30 minutes, indicating its suitability for short juicing sessions.

Is the Omega VSJ843R Vertical Masticating Juicer suitable for juicing leafy greens and hard vegetables?

Yes, the Omega VSJ843R Vertical Masticating Juicer is designed to efficiently juice a variety of produce, including leafy greens, hard vegetables, and fruits, thanks to its masticating juicing technology.

Why is my Omega VSJ843R Vertical Masticating Juicer not turning on?

Ensure that the juicer is properly plugged into a power source and that the power switch is in the on position. If it still doesn't turn on, check the power cord and outlet for any issues, and inspect the juicer's components for signs of damage.

What should I do if my Omega VSJ843R Vertical Masticating Juicer is leaking juice?

Check if the juicer's parts, such as the juice cap or auger, are properly assembled and securely tightened. Inspect for cracks or damage in these parts that may cause leakage, and ensure that the juicer is not overloaded with produce.

How can I address a jammed Omega VSJ843R Vertical Masticating Juicer?

Turn off and unplug the juicer, then disassemble it to access the auger and other components. Clear any stuck pulp or fibrous material from the juicing chamber and auger, and reassemble the juicer before using it again.

What should I do if my Omega VSJ843R Vertical Masticating Juicer is producing less juice than usual?

Check if the juicer's screen or strainer is clogged with pulp or residue, and clean it thoroughly. Ensure that the produce is fresh and properly prepared, and adjust the juicer's settings as needed for optimal juice extraction.

Why is my Omega VSJ843R Vertical Masticating Juicer making loud noises during operation?

Loud noises may indicate that the juicer's auger or motor is strained or damaged. Stop using the juicer immediately and inspect for any obstructions or signs of wear. Contact Omega customer support for further assistance if needed.

VIDEO – PRODUCT OVERVIEW



DOWNLOAD THE PDF LINK: [Omega VSJ843R Vertical Masticating Juicer User Manual](#)
[Download this PDF link to Omega VSJ843R Vertical Masticating Juicer User Manual](#)
[Masticating-Juicer-User-Manual.mp4](#)

REFERENCE: [Omega VSJ843R Vertical Masticating Juicer User Manual-Device.Report](#)

References

- [User Manual](#)

[Manuals+](#), [Privacy Policy](#)

This website is an independent publication and is neither affiliated with nor endorsed by any of the trademark owners. The "Bluetooth®" word mark and logos are registered trademarks owned by Bluetooth SIG, Inc. The "Wi-Fi®" word mark and logos are registered trademarks owned by the Wi-Fi Alliance. Any use of these marks on this website does not imply any affiliation with or endorsement.