



# Omega OFS20 GRANITA Machine Instruction Manual

[Home](#) » [Omega](#) » Omega OFS20 GRANITA Machine Instruction Manual

## Contents [ [hide](#) ]

- [1 Omega OFS20 GRANITA Machine](#)
- [2 Specifications](#)
- [3 Instructions for Machine Transport](#)
- [4 Installation](#)
- [5 Connection to Main Power Supply](#)
- [6 Operating Procedure](#)
- [7 Care and Cleaning](#)
- [8 Cleaning Procedures](#)
- [9 Maintenance](#)
- [10 EXPLODED VIEW & PARTS LIST](#)
- [11 Electric Circuit Diagram OFS30](#)
- [12 Limited Warranty](#)
- [13 Documents / Resources](#)
  - [13.1 References](#)
- [14 Related Posts](#)



**Omega OFS20 GRANITA Machine**



## Specifications

### OFS20

Dimensions: H 23in x W 17in x D 16in H 59cm x W 41cm x D 43cm Watts: 710

### OFS30

Dimensions H 23in x W 17in x D 24in H 59cm x W 41cm x D 61cm Watts: 980

### OFS20 Power Requirements:

Volts: 120/240VAC Amps: 6 A/3 A Hz: 50/60

### OFS30 Power Requirements:

Volts: 120/240VAC Amps: 8 A/4 A Hz: 50/60

## Instructions for Machine Transport



Figure 1.

**NOTE:** Refrigeration equipment must remain upright to avoid damage to the compressor. In order to prevent the oil contained in the compressor from flowing into the cooling circuit, it is necessary to always ship, carry, store and handle this Granita machine in an upright position, following the instructions located on the packaging. Never ship, carry, store or handle unit on its side.

## Installation

1. Cut banding straps from box and lift the box off the machine (see fig. 1).
2. Positioning the machine

The machine must be well ventilated. Leave an 8" (20 cm) clearance on the sides and back of the machine to allow proper ventilation. Installation of the machine near a heat source should be avoided. Some heat sources you should avoid locating this unit too close to are ovens, coffee machines, cold or frozen beverage dispensers or ice machines (equipment with compressors that expel hot air through its vents. An ambient temperature between 59°F (15°C) and 77°F (25°C) is recommended.

## Connection to Main Power Supply

- The electrical safety of this Granita machine can only be achieved if the machine is properly connected to an appropriate grounded receptacle that is in compliance with current national safety standards. Therefore, the manufacturer cannot be held responsible for damage and/or injury caused by failure to connect the unit to an appropriate power source.
- For a safe and correct installation, connect the unit to a dedicated outlet.
- Do not alter the cord or plug in any way.
- The entire length of the power supply cord must not, in any way, be compressed (bent or bunched together) nor may extension cords be used.
- Do not obstruct the ventilation and heat dispersion grill vents on the side and rear panels of the unit. An insufficient ventilation process may reduce the efficiency of the machine, causing it to function inadequately, and cause serious damage to the machine. A minimum of eight inches (20cm) clearance is necessary on each side and behind the unit.

**WARNING:** THIS UNIT MUST BE PROPERLY ELECTRICALLY GROUNDED TO AVOID POSSIBLE FATAL ELECTRICAL SHOCK OR SERIOUS INJURY TO THE OPERATOR. THE POWER CORD IS PROVIDED WITH A THREE PRONG GROUNDED PLUG. IF A THREE-HOLE GROUNDED ELECTRICAL OUTLET IS NOT AVAILABLE, USE AN APPROVED METHOD TO GROUND THE UNIT. DO NOT USE EXTENSION CORDS WITH THIS UNIT. DO NOT "GANG" TOGETHER WITH OTHER ELECTRICAL DEVICES ON THE SAME OUTLET.



## Operating Procedure

### Left – Right Middle Bowl Switches:

Each switch corresponds to the number and location of the bowls configuration to the dispenser. When the switch is in the up/on position the motor and cooling will be turned on.

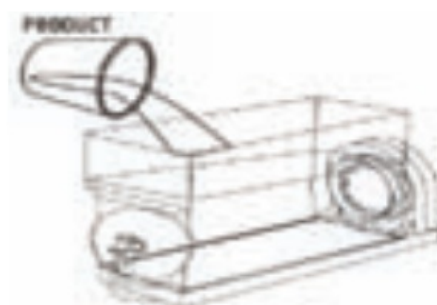


## Care and Cleaning

### Preparing Product

**Attention:** Make sure that the mixture has a 13% – 15% minimum Brix (sugar content). A lower concentrate could seriously damage the mixing parts, as well as the gear motors. NEVER USE ONLY WATER.

1. If using product concentrate (instead of ready-to-use product), dilute and mix the product with water, according to the directions given by the manufacturer, in a separate container. Never pour dry powder, crystals, or concentrate into a dry bowl.
2. Remove the merchandising lid. Pour the prepared product into the bowl. Do not spill any material on lid or on bowl. There is a minimum and maximum fill line on the bowl. Do not overfill or run the unit without enough product. Running unit with product below the minimum full line may cause damage to the unit. Insert the plug into a dedicated electrical outlet.



### Dispensing Product

To dispense the product, position the cup under the dispensing valve and lower the dispensing lever.

**NOTE:** If the machine is turned off at night, with the bowls filled, or just partially filled, a layer of solid ice may form on the surface due to the natural separation of the unmixed (non-moving) product. In this case, before turning the machine back on, remove the layer of superficial ice to prevent damage to the spiral agitator.

### Adjustments

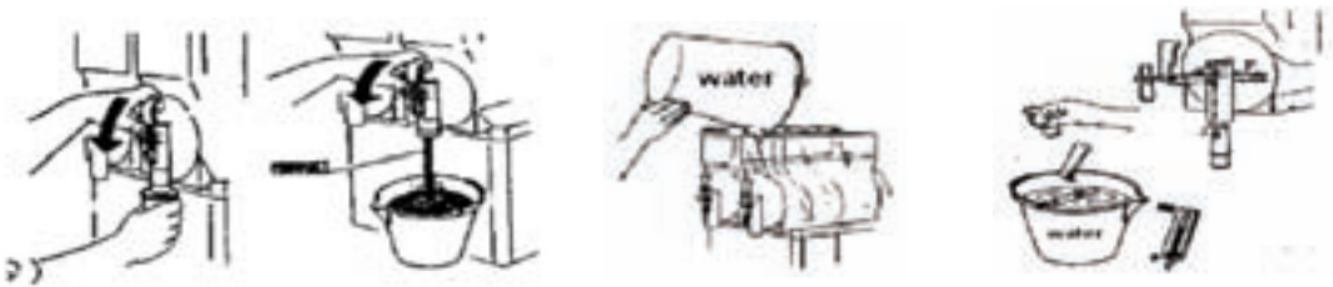
Consistency Adjustment:

1. Unplug the machine.

2. Be sure that product in the bowl is within proper fill range. (Above the minimum fill line) Remove merchandiser.
3. Change the thickness of the product by turning the screw on the back of the bowl, as shown on fig. Turn the screw clockwise for thinner product or counterclockwise for thicker product, (+) thicker, (-) thinner. Each bowl has its own adjusting screw.

## Cleaning Procedures

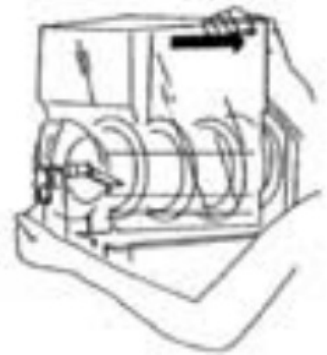
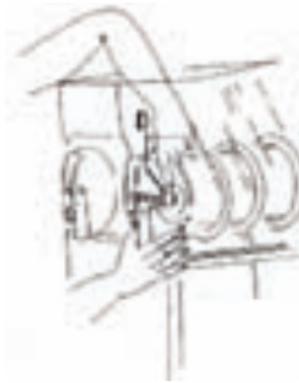
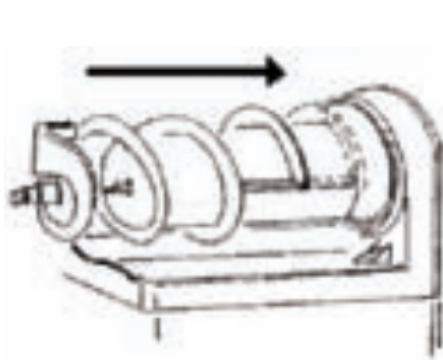
Disconnect the unit from the power supply before sanitizing and cleaning. Failure to do so may result in electric shock. Daily Cleaning: For the machine to function properly, it is important that the cleaning procedures be carried out daily, according to the following instructions: Turn off the equipment and empty the bowl of its remaining product. After draining the product from the unit, you can fill the bowl with hot water (not boiling) to help melt off any sugar deposits. Drain the water prior to proceeding to the next step. To disassemble the draw valve, extract the pin from its seat and the rest of the parts will come out. Wash them with care in warm water.



Remove the bowl by lifting the front part until released, then gently hit on the rear side to completely remove it. Take off the bowl, the spiral agitator and the rear gasket.



Before replacing the spiral agitator put gaskets in their seats and lubricate them with the supplied food grade lubricant. Insert the spiral agitator and place back the bowl in its seat. Lightly lift the front part of the spiral agitator until it corresponds to point D. The bowl and the spiral will join. Push the bowl down until you hear a click and replace the tap.



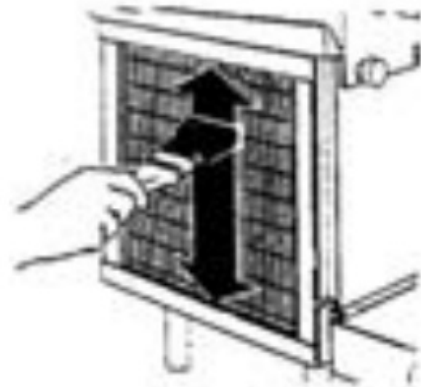
Do not put in dishwasher. Dishwasher may damage some parts such as the clear plastic auger gears and top mixing bar. Reassemble with clean hands.

## Maintenance

**Warning:** Disconnect the unit from its power supply prior to performing any maintenance procedures. Failure to do so could result in electric shock, injury from hazardous moving parts or serious burns from hot surfaces.



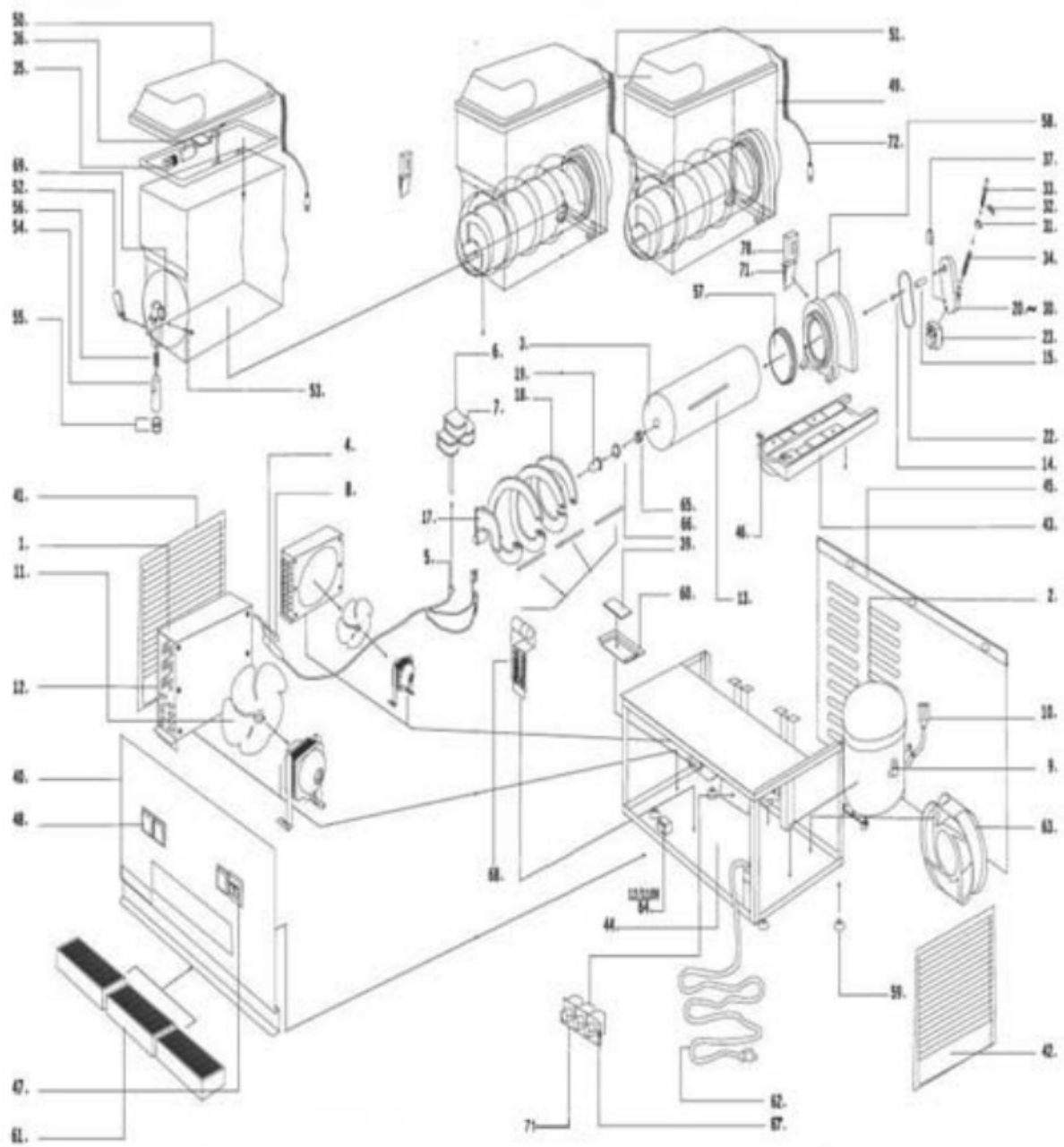
**Removing and cleaning  
the filter (Weekly)**



**Cleaning the  
Condenser (Monthly)**

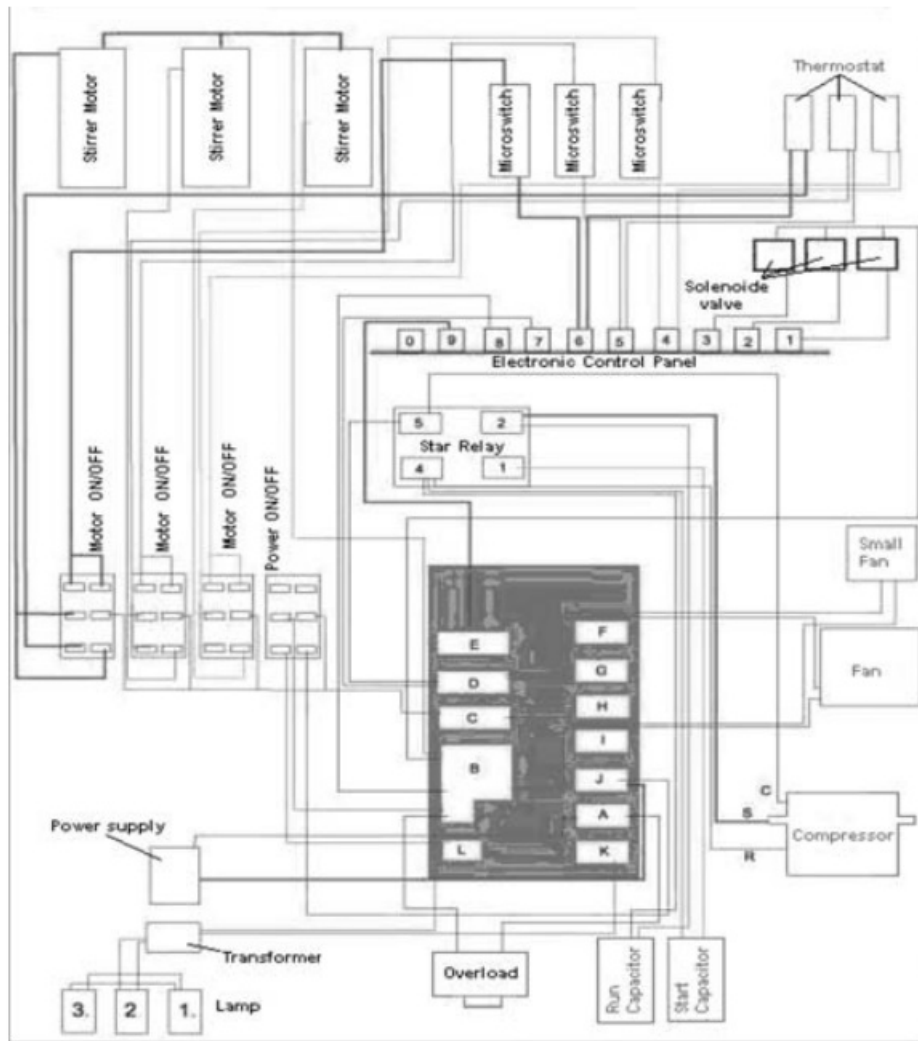
Failure to maintain a clean filter and condenser will cause damage to the unit not covered by warranty.

## EXPLODED VIEW & PARTS LIST



**Electric Circuit Diagram OFS30**





## Limited Warranty

One (1) Year Parts and Labor OMEGA and Asbury Service Warranty & Parts (ASW&P) warrants to the original purchaser of the OMEGA Granita Dispenser and all parts thereof to be free from defects in material and workmanship while under normal use and service as indicated by the OMEGA installation and operating instructions for a period of one (1) year from the date of installation (war-ranty registration must be filed within 10 days of installation for warranty to be activated). OMEGA's obligation under this warranty shall be lim-ited to repairing or replacing, including parts and labor, Monday thru Fri-day from 8:00a.m. to 5:00p.m. excluding holidays and weekends and reasonable travel not to exceed two (2) hours or one hundred (100) miles round trip, any part or assembly of such product which proves to be defective and which upon examination by an ASW&P authorized service technician shall disclose to our satisfaction to be defective. Nei-ther Omega nor Asbury Service Warranty & Parts shall be held responsi-ble for spoilage of products, loss of sales or consequential damages. Any after hours, premium or emergency service must have ASW&P's authorization prior to having service dispatched or a claim filed for warranty consideration. Other conditions and limitations may apply and can be found on the back of the warranty registration card (supplied separately). [www.omegajuicers.com](http://www.omegajuicers.com) The Legacy Companies, Weston, FL 33331 U.S.A.

## Documents / Resources





[Omega OFS20 GRANITA Machine](#) [pdf] Instruction Manual  
OFS30, OFS20, GRANITA Machine, OFS20 GRANITA Machine

## References

- [🌐 Omega Juicers & Blenders - Healthy Living - Boost Your Immune System](#)