

Omega BL400 Series Blender Instruction Manual



OMEGA PRODUCTS, INC.
3355 ENTERPRISE AVENUE, SUITE 160
FORT LAUDERDALE, FL 33331
PHONE: 877.368.2797
FAX: 954.202.7337

May 2013

Contents

- 1 INSTRUCTION MANUAL**
- 2 BL400 SERIES BLENDER**
 - 2.1 BLENDER SAFETY**
 - 2.1.1 TECHNICAL SERVICES**
 - 2.2 SPECIFICATIONS**
 - 2.3 IMPORTANT SAFEGUARDS**
 - 2.4 BLENDER OPERATION**
 - 2.5 PROFESSIONAL BLENDER TIPS**
 - 2.6 CLEANING OPERATION**
 - 2.7 CARING TIPS**
 - 2.8 CAUTION & SAFEGUARDS**
 - 2.9 CONTROL PANEL**
 - 2.10 CARE AND CLEANING**
 - 2.11 TROUBLESHOOTING**
 - 2.12 MAINTENANCE**
 - 2.12.1 INSPECT THE BLENDER AND ITS VARIOUS PARTS AND REPLACE AS FOLLOWS:**
- 3 Documents / Resources**
 - 3.1 References**
- 4 Related Posts**

INSTRUCTION MANUAL

Eat well, drink well and live well with Omega

www.omegajuicers.com

BL400 SERIES BLENDER



English, May 3013

PLEASE READ THESE INSTRUCTIONS CAREFULLY BEFORE USE

BLENDER SAFETY



DANGER Electricity



DANGER Risk of Electrical Shock



GENERAL Caution



DANGER Keep Hands Clear



WARNING



Electrical Shock Hazard

Plug into a grounded outlet.

Do not remove ground.

Do not use an adapter.

Do not use an extension cord.

Failure to follow these instructions can result in death, fire or electrical shock.



WARNING



Moving Parts!

Always cover the lid on the container when blending.
Do not put hands, spoons or other utensils container when blending.
Failure to follow these instructions can result in broken bones, cuts or other injuries.

FAILURE TO ADHERE TO THESE WARNINGS CAN RESULT IN FIRE, SERIOUS INJURY, ELECTRICAL SHOCK AND/OR DEATH

TECHNICAL SERVICES

For assistance or replacement parts, call
Technical Service
24 Hours a Day, 7 Days a Week at
Toll Free: #1.800.633.3401

SPECIFICATIONS



BL420

BL440



BL460

BL480

Shipping Dimensions:

17.5" W x 10" D x 13.75" H

440mm W x 250mm D x 350mm H

Shipping Weight:

15 lb
6.8 kg

Power Requirements:

Volts: 120 VAC
Amps: 11.5 Amp
Hz: 50-60

Container:
64 Oz. / 1800ml
82 Oz. / 2300ml

IMPORTANT SAFEGUARDS

When using electrical appliances, basic safety precautions should always be followed, including the following:

1. Read all the instructions before using the blender.
2. Plug into a grounded outlet.
3. Do not remove ground.
4. Do not use an adapter.
5. Do not use an extension cord.
6. To protect against risk of electrical shock, do not put the blender in water or other liquid.
7. Close supervision is necessary when any appliance is used near children.
8. Unplug from outlet when not in use, before putting on or taking off parts, and before cleaning.
9. Avoid contact with moving parts, especially blades.
10. Do not operate any appliance with a damaged cord or plug or after the appliance malfunctions, or is dropped or damaged in any manner. Return appliance to the nearest authorized service facility for examination /repair/electrical or mechanical adjustment, or contact your distributor.
11. **Caution:** Keep hands and utensils out of container while blending to reduce the risk of severe injury to persons or damage to the blender. If scraping, folding, etc. is necessary, turn off and unplug the blender, and use a rubber spatula only.
12. **Warning:** Blades are sharp. Handle carefully.
13. To reduce the personal injury, never place cutting blades on base without jar properly attached.
14. Screw on locking ring firmly. Injury can result if moving blades accidentally become exposed.
15. Always operate blender with lid in place.
16. When blending hot liquids, place a hand towel over the cover. Do not fill blender container beyond 2/3 full. Always begin processing at the lowest speed setting. Keep hands, arms and face away from the feeder cup opening to prevent possible burns.
17. Do not use outdoors.
18. Do not let cord hang over edge of table or counter, or touch hot surfaces.
19. Do not leave blender unattended while it is operating.
20. The use of unapproved attachments may cause injuries.
21. The capacity can be substantially less than normal with thick mixtures.
22. Inspect the container assembly daily. Do not use a broken, chipped or cracked container. Check cutter for wear, nicks or broken blades.
23. This appliance is intended for short period of operation, with a average rated operating time of approximately 3

minutes.

24. This appliance is not intended for use by persons (including Children) with reduced physical, sensory or mental capabilities or lack of experience and knowledge, unless they have been given supervision or instruction concerning the use of the appliance by a person responsible for their safety. Children should be supervised to ensure they do not play with the appliance.

BLENDER OPERATION

To operate the blender, proceed as follows

1. For the first time user, wash the container assembly, including the lid, before use.
(Refer to “Cleaning Instruction”) Do not put the container assembly & blender base assembly in the dishwasher.
2. Place the blender on a dry, clean, level surface, and be sure it is set to off.
3. Place the container onto the blender base. Make sure it rests securely on the base.
4. Plug the blender into an electric outlet.
5. Place the ingredients into the container.
6. Place the lid and feeder cap tightly on the container.
7. Set desired speed by switching the knob to Low or High.
8. The pulse feature can also be used by pressing the pulse switch.

PROFESSIONAL BLENDER TIPS

To operate the blender, proceed as follows

1. Processing hot liquid
 - Always cover the lid and feeder cap before blending hot liquid or mixture.
 - Use the feeder cap to add liquids to the container while the unit is running.
 - Never stand with your face directly over the container when you are putting ingredient through the feeder cap.
2. Blending Icy mixtures
 - Steps for blending ice:
 - Pour in liquid, and then add ice.
 - Place the lid on the container.
 - Set to desired speed.
 - Chunks of frozen fruit can be added to milk or fruit juice to produce a sherbet or slush.
 - Use the feeder cap to add liquids or ingredients to the container while the unit is running.

CLEANING OPERATION

Omega blender container parts are corrosion resistant, sanitary and easily cleaned. Do not put the container assembly & blender base assembly in the dishwasher.

1. Before first use and after every use, separate container parts from the base

2. Add cleaning solution to the container. Use washing solution of tepid water (less than 115°F/46°C) and a non-sudsing detergent. Use the recommended amount of detergent.
3. Scrub and flush out the container interior lid and feeder cap to remove food residue. Empty container.
4. Fill container 1 /4 full with fresh washing solution and place it on the base.
5. Replace the lid on the container and run the blender on high speed for 2 minutes.
6. Repeat step 4 using clean rinse water (95°F/35°C).
7. Wipe down the container, feeder cap, and lid with a soft cloth or sponge, dampened with fresh washing solution.
8. Wipe the exterior of the base with a damp cloth or sponge. The base contains electrical components: do not immerse, use a high-pressure washer, or use a dishwasher to clean the base.

CARING TIPS

To care for your blender, please read the tips as follows:

1. Periodically check all parts before reassembly, as use of damaged or non-recommended parts could result in a severe personal injury and/or damage to the blender.
2. **Blades:**
If the processing blades are stuck or difficult to turn, **DO NOT USE BLENDER** (Check by carefully turning the blades in a counterclockwise direction, where the opposite edges are sharp. Blades should turn freely.)
3. **Container:**
If the EASTMAN TRITAN container is cracked, **DO NOT USE BLENDER**, further use could result in the container breakage during use.
4. **Blender Base:**
Never immerse the blender base in water. Unplug unit. The housing can be cleaned with a damp cloth.
5. **Motor:**
The motor is permanently lubricated and does not require any additional lubrication.

CAUTION & SAFEGUARDS

1. To protect against risk of electrical shock, do not put motor base in water or other liquid.
2. Unplug the power cord from the wall outlet when the unit is not in use, before putting on or taking off parts, and before cleaning other than washing the container.
3. Never contact moving parts.
4. Do not use outdoors.
5. Do not let the power cord hang over edge of table or counter, or touch hot surfaces.
6. Keep hands and utensils out of the container while the motor is running to prevent the possibility of severe personal injury and/or damage to the unit. A rubber scraper may be used, but only when the unit is not running.
7. The blade is very sharp and requires careful handling. Never try to remove blade while container is sitting on the motor base. Do not operate with loose or damaged blades. To reduce the risk of personal injury, never place blade assembly on motor base without blender container properly attached.
8. Always operate with the lid in place.
9. NEVER bang the container against a surface to loosen the ingredients. Remove the container from the base and use a rubber spatula to remove thick mixtures from the bottom of your container.

10. NEVER shake or rattle a container in use while seated on the motor base.
11. NEVER remove the container before the machine has come to a complete stop.
12. NEVER start the motor before the container is in place.
13. Keep children away when the blender is in use.

On most models, the power cord comes equipped with a three-prong (grounding) plug which mates with a standard three-prong wall outlet (Figure A). Please use approved 2 prong adapters (Figure B) when a ground is not available. Do not cut or remove the round grounding prong from the power cord.



Figure A

Figure B

CONTROL PANEL

MODEL	CONTAINER	CONTROLS		
BL420/422	64 Oz. / 1800ml	On/Off Switch	High/Low Switch	
BL430/432	82 Oz. / 2300ml	On/Off Switch	High/Low Switch	
BL440/442	64 Oz. / 1800ml	Off/Low/High Knob	Pulse Switch	
BL450/452	82 Oz. / 2300ml	Off/Low/High Knob	Pulse Switch	
BL460/462	64 Oz. / 1800ml	On/Off Switch	Variable Speed Knob	Pulse Switch
BL470/472	82 Oz. / 2300ml	On/Off Switch	Variable Speed Knob	Pulse Switch
BL480/482	64 Oz. / 1800ml	On/Off Switch	Variable Speed Knob	Timer Knob
BL490/492	82 Oz. / 2300ml	On/Off Switch	Variable Speed Knob	Timer Knob

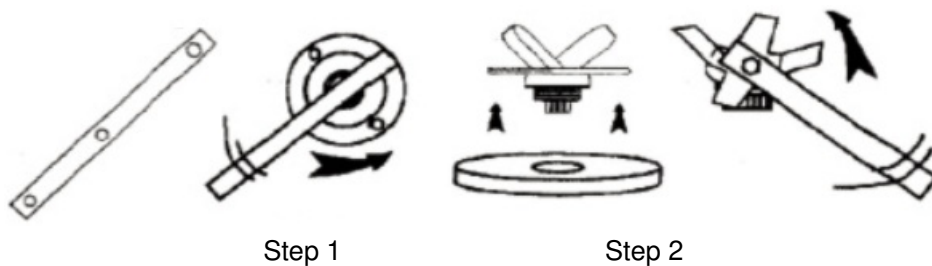
Blade Agitator Assembly

Use caution when handling the blade; it is sharp. Use a soft cloth to grab the blade when inserting the blade assembly through the container.

Retainer Nut and Blade Removal

- The retainer nut is easily removed using the disassembling tool (DT). Turn container upside down and insert the disassembling tool on the holes of the nut. Push the tool counterclockwise to loosen nut (Step 1). Once loosened, remove by hand. (Disassembly tool sold separately)
- To release the blade use the other end of the DT while grabbing the gear with backup pliers and turn counterclockwise (Step 2)

Disassembling Tool



CARE AND CLEANING

Motor Base

1. Unplug the power cord.
2. Wipe outside surface with a damp soft cloth or sponge, which has been rinsed in a mild solution of liquid dish soap and warm water.

NEVER IMMERSE MOTOR BASE IN WATER OR OTHER LIQUID.

3. Wipe dry with a clean, soft cloth.

Control Panel

Gently wash the front panel with a soft cloth and low pH balance soap.

NOTE: Be sure to wring excess water out of cloth or sponge when cleaning around the controls, drive socket or any electrical part.

Lid

Separate the lid and plug, then wash in warm soapy water. Rinse clean under running water and dry. Reassemble before use.

Container

1. To clean: Fill pitcher 1/4 full with warm water and add 2-3 drops of dish soap. Return container to motor base and firmly position the two part lid. Run machine for 30 seconds. Empty container. Repeat this step.

TROUBLESHOOTING

PROBLEM	PROBLEM CAUSE	PROBLEM SOLUTION
Loud noise from the container	<ul style="list-style-type: none"> • Container blades do not spin • Increased vibration • Leaking from bottom of container. 	<ul style="list-style-type: none"> • Broken or worn drive socket. Replace drive socket. • Check blade assembly for damaged components and replace. • Tighten retainer nut the on the bottom of the container.
Machine starts then shuts off	<ul style="list-style-type: none"> • Motor • Reset button 	<ul style="list-style-type: none"> • Depress reset button • Call Customer Service
Machine starts then shuts off	<ul style="list-style-type: none"> • Power failure • Power supply cord damage 	<ul style="list-style-type: none"> • Check to make sure there is power to the machine. • Check the power supply cord and the connection to the power outlet.

MAINTENANCE


INSPECT THE BLENDER AND ITS VARIOUS PARTS AND REPLACE AS FOLLOWS:

Daily	1. Unplug the blender and remove the container from the base. 2. Inspect the container blades for wear, nicks, and broken or loose blades. Replace if necessary.
Weekly	1. Unplug the blender. 2. Inspect the power cord insulation and power plug for cracks. Refer to “Technical Service” for repair or replacement.
Quarterly	1. Review the condition of the container assembly and Mushroom Clutch Set at least every 90 days. 2. Replace if necessary.



REPLACEMENT PARTS

For replacement parts, call toll free: #1.800.633.3401

Documents / Resources

 <small>OMEGA PRODUCTS, INC. 2000 KENNEDY BLVD. SUITE 100 FARMINGTON, CT 06031 PHONE: 860.633.3401 FAX: 860.633.3401</small>	Omega BL400 Series Blender [pdf] Instruction Manual BL420, BL400 Series Blender, Series Blender, Blender, BL440, BL460, BL480
--	--

References

-  [Omega Juicers: Experience the Power of Juicing for Optimum Health!](#)
-  [Manual-Hub.com - Free PDF manuals!](#)
- [User Manual](#)

[Manuals+.](#) [Privacy Policy](#)

This website is an independent publication and is neither affiliated with nor endorsed by any of the trademark owners. The "Bluetooth®" word mark and logos are registered trademarks owned by Bluetooth SIG, Inc. The "Wi-Fi®" word mark and logos are registered trademarks owned by the Wi-Fi Alliance. Any use of these marks on this website does not imply any affiliation with or endorsement.