



OMCAN BE-CN-2083-CSS 20 Inch Table Top Reversible Dough Sheeter Instruction Manual

[Home](#) » [OMCAN](#) » OMCAN BE-CN-2083-CSS 20 Inch Table Top Reversible Dough Sheeter Instruction Manual 

OMCAN BE-CN-2083-CSS 20 Inch Table Top Reversible Dough Sheeter Instruction Manua



Contents

- 1 General Information
- 2 Safety and Warranty
- 3 Technical Specifications
- 4 Installation
- 5 Operation
- 6 Maintenance
- 7 Troubleshooting
- 8 Parts Breakdown
- 9 Electrical Schematics
- 10 Warranty Registration
- 11 Documents / Resources
 - 11.1 References
- 12 Related Posts

General Information

Omcan Manufacturing and Distributing Company Inc., Food Machinery of America, Inc. dba Omcan and Omcan Inc. are not responsible for any harm or injury caused due to any person's improper or negligent use of this equipment.

The product shall only be operated by someone over the age of 18, of sound mind, and not under the influence of any drugs or alcohol, who has been trained in the correct operation of this machine, and is wearing authorized, proper safety clothing.

Any modification to the machine voids any warranty, and may cause harm to individuals using the machine or in the vicinity of the machine while in operation.

CHECK PACKAGE UPON ARRIVAL

Upon receipt of an Omcan shipment please inspect for external damage.

If no damage is evident on the external packaging, open carton to ensure all ordered items are within the box, and there is no concealed damage to the machine.

If the package has suffered rough handling, bumps or damage (visible or concealed), please note it on the bill of lading before accepting the delivery and contact Omcan within 24 hours, so we may initiate a claim with the carrier.

A detailed report on the extent of the damage caused to the machine must be filled out within three days, from the delivery date shown in the shipping documents.

Omcan has no recourse for damaged products that were shipped collect or third party.

Before operating any equipment, always read and familiarize yourself with all operation and safety instructions.

Omcan would like to thank you for purchasing this machine.

It's of the utmost importance to save these instructions for future reference.

Also save the original box and packaging for shipping the equipment if servicing or returning of the machine is required.

Safety and Warranty

Thanks for using this high performance, reversible dough sheeter.

The unit will be an excellent assistant for making Danish bread, cheese cake and many other products.

Before using this machine, please carefully read this manual and follow the procedures to operate the machine.

All the safety devices must be checked before operation.

Turn the machine off immediately when defects or malfunctions are found.

Contact Omcan Customer Service immediately at: 1-800-465-0234.

- Check all warning signs on the machine.
- Clean up the water, oil and resin on the machine and its foundation. If any liquids are found, immediately clean it to avoid injury.
- Keep your body away from any moving parts of the machine.
- Do not let foreign objects fall into the machine while operating.
- Do not climb onto the machine while it is running.
- If any problems occur in the process of operation, press the Emergency Stop Button immediately.

RESIDENTIAL USERS: Vendor assumes no liability for parts or labor coverage for component failure or other damages resulting from installation in non-commercial or residential applications.
The right is reserved to deny shipment for residential usage; if this occurs, you will be notified as soon as possible.

1 YEAR PARTS AND LABOR WARRANTY

Within the warranty period, contact Omcan Inc. at 1-800-465-0234 to schedule an Omcan authorized service technician to repair the equipment locally.
Unauthorized maintenance will void the warranty. Warranty covers electrical and part failures, not improper use.
Please see: [https://omcan.com/disclaimer for complete info](https://omcan.com/disclaimer-for-complete-info)

WARNING:

The packaging components are classified as normal solid urban waste and can therefore be disposed of without difficulty.

In any case, for suitable recycling, we suggest disposing of the products separately (differentiated waste) according to the current norms.

DO NOT DISCARD ANY PACKAGING MATERIALS IN THE ENVIRONMENT!

Technical Specifications

Model	BE-CN-2083-CSS
Electrical	220 V / 60 Hz / 1
Power	0.75 HP/ 0.55 kW
Roller Size (Dia. x W)	3.5" x 20.5" / 88 x 520mm
Roller Adjustable Gap	1 – 35mm
Conveyor Belt Width	19.75" / 502mm

Conveyor Width	22.5" / 572mm
Conveyor Belt Speed	18m/min – 32m/min
Roller Speed	124r/min
Maximum Dough Capacity	11 lbs. / 5 kgs.
Maximum Working Position Dimensions	35" x 88" x 25.6" / 889 x 2235 x 650mm
Resting Position Dimensions (W x H)	25.5" x 36.25" / 648 x 921mm
Weight	275.6 lbs. / 125 kgs.
Item Number	42154

Installation

1. Installation must be performed on a flat, dry surface with a stable temperature environment.
Press down pedals of active wheels to lock the machine.
2. Follow the instructions on the plaque of electrical cabinet to connect power supply.
The breaker for power supply should be installed on the wall with 1.7 m height from the floor.
3. Pull conveyor straight, put down the table and then put down both safety guards.
4. Then check the movement of the conveyors. Press the left-hand side pedal and the conveyors move left.
Press the right-hand side pedal and the conveyors move right.
If the movement is in the wrong direction, change the two wires of the power supply and re-test the machine.
5. The power cord must be grounded.

Operation

1. When using machine, set the thickness handle to the most left position.
2. **NOTE:** Do not put hands into safety guard.
3. Switch the power off and disconnect from the socket when cleaning.
4. Lift up safety guards after operation and then turn off power switch.

Maintenance

ALL MAINTENANCE TO BE PERFORMED BY QUALIFIED TECHNICIANS.

CHANGING GEARS (FOR QUALIFIED TECHNICIANS ONLY)

Switch the power off then use a screw driver to dismantle the side plate of lower machine body.

Disconnect the 3 electrical wires on the connecting box.

Lift up the safety guards then set the thickness handle to scale "O".

Use the alan-key M5 to open the cover and take out the gear housing, then replace the gears.

After replacement, reverse the procedures and set the thickness handle to scale "0" to reassemble.

REPLACING THE DRIVING ROLLER AND BEARING

Switch the power off and lift up the safety guards. Use the alan-key to open the cover.

Next, loosen the nuts of bearing, use a cross type screw driver to move bearing through the joint or roller and bearing.

Replace the roller and assemble by reversing the procedures.

CHANGE CONVEYORS

- Remove the roller by following the procedures mentioned above.
- Apply spanner M 12 to take the belts on roller and remove product tray.
- Apply spanner M 23 to loose the nuts of roller.
- Use spanner M 19 to loosen the belts of the support separate the table.
- Use spanner M 14 to take away the belts of the table holder and separate them.
- Dismantle the table and belts for replacement.
- Assembly by reversing the procedure.
- The tightness of belts should be correct.

When the machine is running, press the belts slightly and check if there is a slip between the belts and roller.

CLEANING:

After work is finished every day, please turn the power switch off, then perform the cleaning process as stated below:

1. Fold the conveyor belt plate, then clean the residual dough and sundries that remain on the conveyor belt roller.

2. Clean the residual dough that is left on the upper and lower roller and scraper.

Ensure that there is nothing left on the roller and scraper.

Note: Do not use pressurized water jets to clean the unit.

Do not use a knife or hard object to scrape the rollers, use a damp cloth instead.

Do not use stainless steel or other metal blades to scrape the conveyor belt surface, use the plastic scraper to clean the conveyor belt surface.

Troubleshooting

Problem	Possible Causes

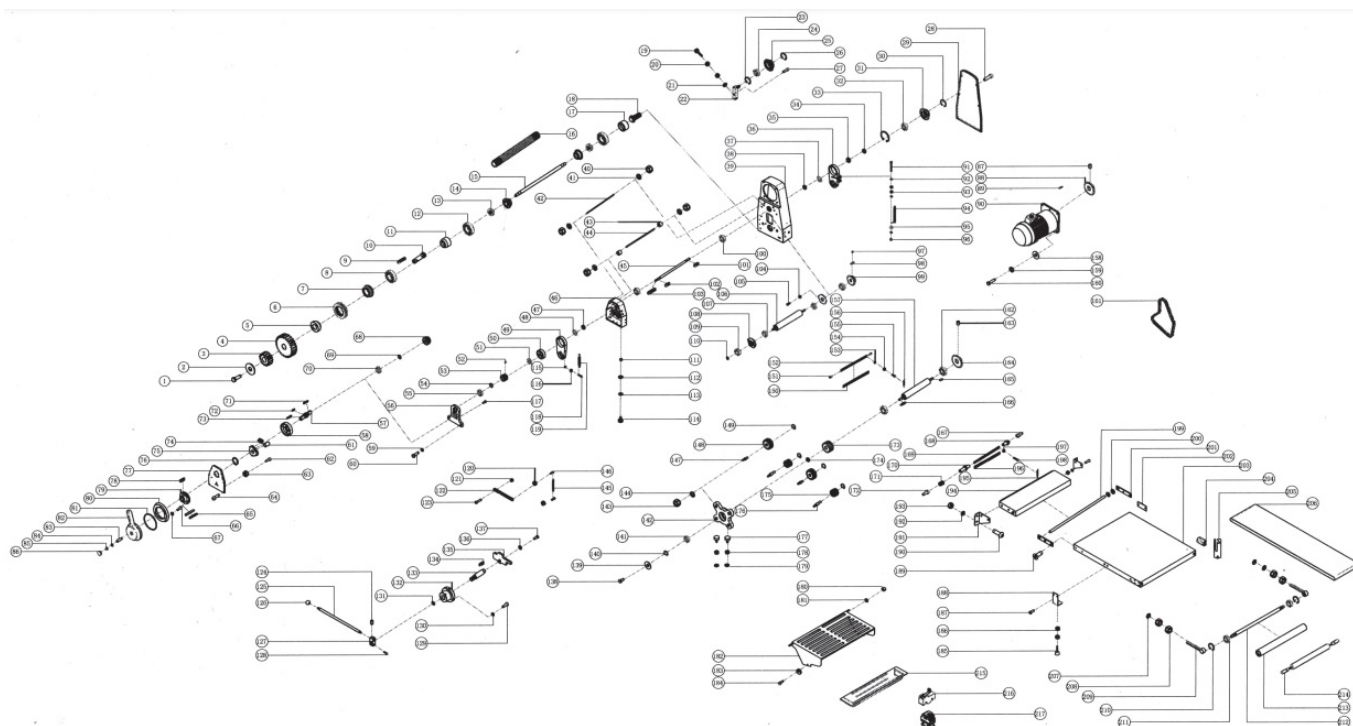
The machine does not work.	Is the power supply on?
	Is the power switch on?
	Has the safety guard been put down?
	Lift safety guard, start level and check if you hear a click from the limit switch.
Electrical cabinet continuously vibrates.	Is the belt loose?
	Are the wires improperly connected?
	Is there something inside the electrical cabinet?
The machine only works on one side.	Has the breaker failed?
	The wiring of the Level or limit switch failed?
	Is the wiring of the motor incorrect?
	Is the electricity not three phase?
One conveyor side works while the other side has stopped.	The gear is worn out.
	Conveyor belt is not tight enough.
Thickness handle cannot stay fixed and falls downward.	If machine runs smoothly when toward the right-hand side but does not when toward left-hand side, this means the chain inside the rear of the machine body is too loose. Set the handle at a scale of 15-20, and use a screw driver to open the cover. Apply spanner to adjust motor plate to tighten chain. Check if handle can be operated smoothly.

Conveyor moves toward one side during production.	Adjusting the nuts to let the belt move straight. For example, if belt moves toward the rear side, loosen the front nut. When adjusting the nuts, make sure that the speed of belt is the same as roller and there are no gaps between the roller and belt.
Noise from roller.	Bearing wore out.
	If noise comes from the pressing roller & scraper and conveyor, something is stuck on the active roller. To clean the active roller simply lift the table. Refer to assembly drawing for active roller and passive roller position.

Conveyor is too tight.	Machine is located in a humid area and this may cause the conveyor to become shorter. If conveyors are too tight, loose nuts during regular inspection. If conveyors are too tight, it may:
	Not have sufficient horse power.
	Damaged bearing & shaft of active roller and passive roller.
	Over load and damage to the driving gear.

NOTE: FOR ELECTRICAL AND MECHANICAL REPAIRS, PLEASE CONTACT OMCAN AT 1-800-465-0234.

Parts Breakdown



Item No.	Description	Position	Item No.	Description	Position	Item No.	Description	Position
AD197	Outer Hexagon Screw Arbor for 42154	1	AD213	Tooth Bar for 42154	42	66790	Screw for 42154	83
AD198	Flat Gasket for 42154	2	66759	Rubber Sleeve for 42154	43	AD207	Lock washer for 42154	84
66749	Gear (M3 15T) for 42154	3	66758	Fixed Lever for 42154	44	66707	Soft Hat for 42154	85
66748	Gear (M3 27T) for 42154	4	66763	Shaft for 42154	45	AD231	Buckle Head for 42154	86
66746	Washer for 42154	5	66783	Base for 42154	46	AD215	Tighten Screw for 42154	87
66747	Bearing for 42154	6	66729	Washer for 42154	47	66809	Gear (24T) for 42154	88

6678 5	Bearing Sleeve for 42154	7	AD2 14	Flat Gasket for 42154	48	AD27 3	Flat Key (Type C) for 42154	89
6678 4	Bearing for 42154	8	6673 1	Roller Adjusting Block for 42154	49	AD30 5	Motor for 42154	90
AD1 99	Flat Key (Type C) for 42154	9	6673 0	Eccentric Mounting for 42154	50	AD24 9	Outer Hexagon Bolt for 42154	91
4479 7	Shaft for 42154	10	AD2 14	Flat Gasket for 42154	51	AD19 8	Flat Gasket for 42154	92
6678 1	Bearing Sleeve for 42154	11	AD2 15	Tighten Screw for 42154	52	6683 5	Nut for 42154	93
AD2 00	Bearing for 42154	12	AD2 16	Brake Apparatus Gear for 42154	53	AD25 0	Draw Spring for 42154	94
AD2 01	Thrust Bearing for 42154	13	AD2 17	Washer (3mm) for 42154	54	AD19 8	Flat Gasket for 42154	95
AD3 01	Aluminum Block for 42154	14	6674 2	Bearing for 42154	55	6683 5	Nut for 42154	96
AD3 02	Roller Shaft for 42154	15	AD2 18	Brake Apparatus Bearing Fixed Seat for 42154	56	AD21 5	Tighten Screw for 42154	97
4480 0	Active Roller for 42154	16	AD2 38	Brake Apparatus Rotating Shaft for 42154	57	AD25 2	Flat Key (Type C) for 42154	98

AD2 04	Bearing Holder for 42154	17	AD2 37	Brake Apparatus Fi xed Seat for 42154	58	6680 8	Gear (18T) for 421 54	99
AD2 05	Adjusting Bolt for 4 2154	18	AD2 07	Lock washer for 42154	59	6668 9	Bearing for 42154	100
AD2 06	Rubber Head Scre w for 42154	19	AD2 39	Outer Hexagon Bolt for 42154	60	AD22 7	Flat Key (Type A) f or 42154	101
6679 5	Nut for 42154	20	AD2 36	Brake Apparatus Cy linder for 42154	61	AD22 7	Flat Key (Type A) f or 42154	102
AD2 07	Lockwasher for 42 154	21	6677 0	Screw for 42154	62	AD22 1	Flat Key (Type C) f or 42154	103
AD2 08	Fixed Axis for 4215 4	22	6681 8	Soft Hat for 42154	63	AD25 6	Nut for 42154	104
AD2 09	Clamp Spring for H ole Use for 42154	23	AD2 35	Inner Hexagon Bolt for 42154	64	AD25 7	Inner Hexagon He ad Screw for 4215 4	105
AD2 10	Bearing for 42154	24	AD2 34	5×30 Split Pin for 42154	65	6677 1	Upper Roller for 42 154	106
AD2 11	Chain Wheel for 42 154	25	AD2 33	Inner Hexagon Bolt for 42154	66	6668 9	Bearing for 42154	107
AD2 12	Clamp Spring for S haft Use for 42154	26	AD2 32	Lockwasher for 421 54	67	6676 5	Roller Adjustment Block for 42154	108

66708	Screw for 42154	27	AD219	Brake Apparatus Gear for 42154	68	66689	Bearing for 42154	109
AD235	Inner Hexagon Bolt for 42154	28	AD220	Washer (φ22xφ32x3mm) for 42154	69	AD258	Clamp Spring for Shaft Use for 42154	110
AD303	Cover for 42154	29	66742	Bearing for 42154	70	66801	Soft Hat for 42154	111
AD248	Clamp Spring for Shaft Use for 42154	30	AD221	Flat Key (Type C) for 42154	71	AD244	Flat Gasket for 42154	112
AD247	Chain Wheel (M3 21T) for 42154	31	AD222	Flat Key (Type A) for 42154	72	AD244	Flat Gasket for 42154	113
66689	Bearing for 42154	32	AD223	Flat Key (Type A) for 42154	73	AD306	Foot Pad for 42154	114
AD246	Clamp Spring for Hole Use for 42154	33	AD224	Spring for 42154	74	AD198	Flat Gasket for 42154	115
66729	Washer for 42154	34	AD225	Brake Apparatus for 42154	75	66835	Nut for 42154	116
66730	Eccentric Mounting for 42154	35	AD226	Clamp Spring for Shaft Use for 42154	76	AD241	Inner Hexagon Bolt for 42154	117
AD245	Roller Adjusting Block for 42154	36	66714	Cover for 42154	77	AD240	Inner Hexagon Bolt for 42154	118

AD2 14	Flat Gasket for 421 54	37	AD2 27	Flat Key (Type A) fo r 42154	78	AD24 2	Draw Spring for 42 154	119
6672 9	Washer for 42154	38	AD2 28	Brake Apparatus R otating Disc for 421 54	79	AD25 6	Nut for 42154	120
AD3 04	Machine Wall for 4 2154	39	AD2 29	Dial Disc for 42154	80	6683 5	Nut for 42154	121
6679 5	Nut for 42154	40	AD2 30	Seal Ring for 42154	81	6672 6	Gear Rack for 421 54	122
AD2 07	Lock washer for 42 154	41	6669 0	Adjusting Plate for 4 2154	82	AD26 5	Inner Hexagon He ad Screw for 4215 4	123

Item No.	Description	Positi on	Item No.	Description	Posit ion	Item No.	Description	Positi on
AD2 67	Tighten Screw for 42154	124	AD2 53	Draw Spring for Up per Scraper for 421 54	156	AD31 0	Foot Rack for 4215 4	188
6670 9	Adjusting Lever for 42154	125	6677 4	Lower Roller for 42 154	157	AD27 4	Cross Countersunk Scre w for 42154	189
AD2 68	Black Plastic Ball f or 42154	126	AD2 07	Lock washer for 42 154	158	AD27 4	Cross Countersunk Scre w for 42154	190

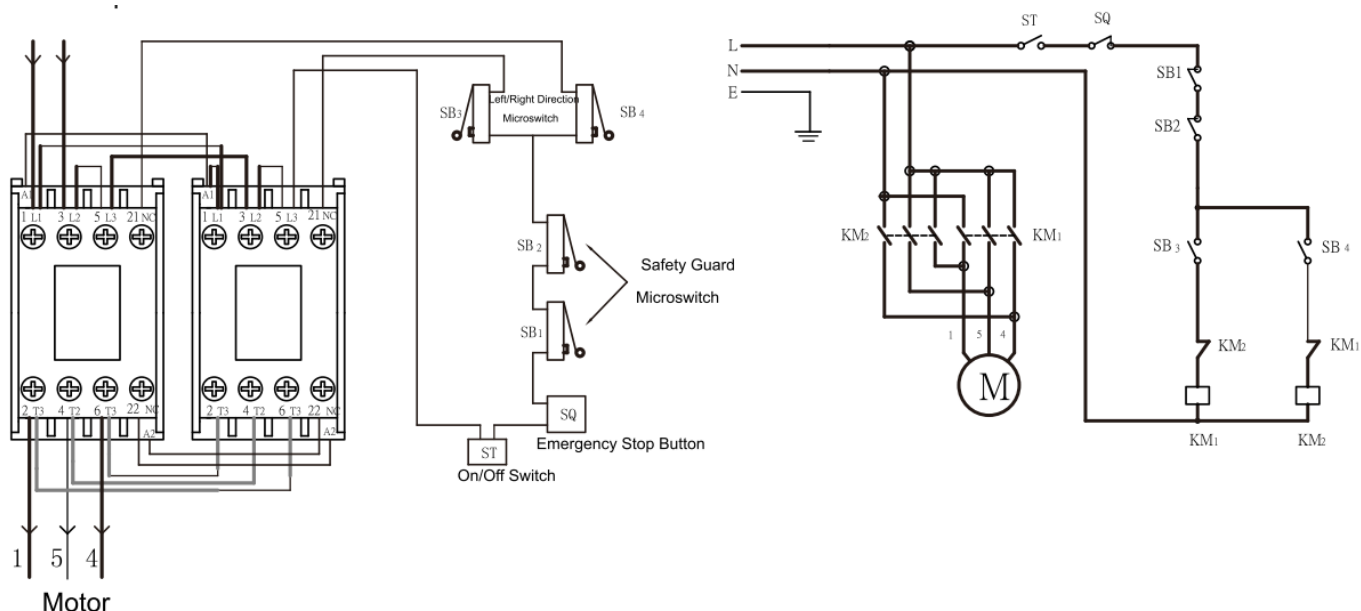
66706	Adjusting Seat for 42154	127	AD207	Lock washer for 42154	159	66797	Fixed Plate for 42154	191
AD240	Inner Hexagon Bolt for 42154	128	66790	Screw for 42154	160	AD207	Lock washer for 42154	192
AD197	Outer Hexagon Screw Arbor for 42154	129	AD308	Chain for 42154	161	66795	Nut for 42154	193
AD198	Flat Gasket for 42154	130	66772	Bearing for 42154	162	66796	Bracket Support Plate for 42154	194
AD266	Flat Gasket for 42154	131	AD215	Tighten Screw for 42154	163	66786	Draw Spring for 42154	195
66701	Permanent Seat for 42154	132	66808	Gear (18T) for 42154	164	66824	Lower Knife for 42154	196
66700	Shaft for 42154	133	AD252	Flat Key (Type C) for 42154	165	66818	Soft Hat for 42154	197
AD222	Flat Key (Type A) for 42154	134	AD223	Flat Key (Type A) for 42154	166	AD269	Cross Head Screw for 42154	198
66728	Adjusting Sheet for 42154	135	AD275	Inner Hexagon Screw for 42154	167	66825	Shaft for 42154	199
AD198	Flat Gasket for 42154	136	AD278	Dowel Pin for 42154	168	AD296	Spacer for 42154	200

AD1 97	Outer Hexagon Screw Arbor for 42154	137	6682 3	Lower Knife Sleeve for 42154	169	6680 0	Link Block for 42154	201
AD2 63	Outer Hexagon Bolt for 42154	138	AD2 77	Dowel Pin for 42154	170	AD28 1	Screw Arbor Fixed Lever for 42154	202
AD2 07	Lock washer for 42154	139	AD2 76	Compression Spring for 42154	171	6682 6	Bracket Board for 42154	203
AD2 46	Clamp Spring for Hole Use for 42154	140	AD2 75	Inner Hexagon Screw for 42154	172	AD28 0	Big Supporting Plate Fixed Seat for 42154	204
6674 2	Bearing for 42154	141	6675 2	Gear (M3 24T) for 42154	173	AD29 7	Fixed Seat for Rolling Pin for 42154	205
6673 9	Adjusting Block for 42154	142	6672 9	Washer for 42154	174	AD27 9	Conveyor Belt for 42154	206
6679 5	Nut for 42154	143	6675 3	Gear (M3 10T) for 42154	175	AD26 6	Flat Gasket for 42154	207
AD2 07	Lock washer for 42154	144	6675 4	Lower Plastic Gear Shaft for 42154	176	6680 5	Nut for 42154	208
AD2 62	Draw Spring for 42154	145	AD2 72	Rubber Head Screw for 42154	177	6680 6	Adjusting Lever for 42154	209
AD2 57	Inner Hexagon Head Screw for 42154	146	6683 5	Nut for 42154	178	AD25 8	Clamp Spring for Shaft Use for 42154	210

6673 8	Upper Plastic Gear Shaft for 42154	147	AD1 98	Flat Gasket for 421 54	179	6678 4	Bearing for 42154	211
6673 7	Gear (M3 15T) for 42154	148	6681 6	Microswitch Sleeve for 42154	180	6682 9	Active Shaft for 42 154	212
AD2 61	Circlip for 42154	149	AD2 07	Lock washer for 42 154	181	6682 8	Conveyor Roller fo r 42154	213
AD3 07	Upper Scraper for 42154	150	6681 5	Safety Guard for 42 154	182	AD06 5	Rolling Pin for 421 54	214
AD2 60	Dowel Pin for 4215 4	151	6681 7	Safety Guard Rubb er Roller for 42154	183	6681 4	Flour Tray for 4215 4	215
6682 1	Knife Sleeve Pin fo r 42154	152	6677 0	Screw for 42154	184	AD31 1	Microswitch for 42 154	216
AD2 55	Lock washer for 42 154	153	AD3 09	Supporting Plate Fo od Pad for 42154	185	AD31 2	AC Contactor for 4 2154	217
6681 8	Soft Hat for 42154	154	6683 5	Nut for 42154	186			
AD2 54	Cross Head Bolt fo r 42154	155	AD2 69	Cross Head Screw f or 42154	187			

Electrical Schematics

Power Input



E	Ground Wire	L	Power Input	SB1	Safety Guard Microswitch	SB4	Left/Right Direction Microswitch
KM1	AC Contactor	M	Motor	SB2	Safety Guard Microswitch	ST	On/Off Switch
KM2	AC Contactor	N	Power Input	SB3	Left/Right Direction Microswitch	SQ	Emergency Stop Button

Warranty Registration

Thank you for purchasing an Omcan product.

To register your warranty for this product, complete the information below, tear off the card at the perforation and then send to the address specified below.

You can also register online by visiting:

<https://omcan.com/warranty-registration/>

For mailing in Canada

OMCAN
PRODUCT WARRANTY REGISTRATION
3115 Pepper Mill Court,
Mississauga, Ontario
Canada, L5L 4X5

For mailing in the US

OMCAN
PRODUCT WARRANTY REGISTRATION
4450 Witmer Industrial Estates, Unit 4,
Niagara Falls, New York
USA, 14305

Or Email To: service@omcan.com

Since 1951 Omcan has grown to become a leading distributor of equipment and supplies to the North American food service industry.

Our success over these many years can be attributed to our commitment to strengthen and develop new and existing relationships with our valued customers and manufacturers.

Today with partners in North America, Europe, Asia and South America, we continually work to improve and grow the company.

We strive to offer customers exceptional value through our qualified local sales and service representatives who provide convenient access to over 6,500 globally sourced products.

Scan Me



Documents / Resources

The image shows the cover of an instruction manual for the Omcan BE-CN-2083-CSS Dough Sheeter. It features the Omcan logo at the top, a photograph of the machine, and technical specifications. A "STOP" warning label is visible on the left side of the cover.	<p>OMCAN BE-CN-2083-CSS 20 Inch Table Top Reversible Dough Sheeter [pdf] Instruction Manual</p> <p>BE-CN-2083-CSS 20 Inch Table Top Reversible Dough Sheeter, BE-CN-2083-CSS, 20 Inch Table Top Reversible Dough Sheeter, Table Top Reversible Dough Sheeter, Top Reversible Dough Sheeter, Reversible Dough Sheeter, Dough Sheeter, Sheeter</p>
---	--

References

- [★ Omcan](#)
- [★ Disclaimer – Omcan](#)
- [★ Warranty Registration – Omcan](#)