

**Contents** [ [hide](#) ]

[1 OLUMAT B35 Smart Lock with App](#)

[2 HOW TO REGISTER](#)

[3 FAQs](#)

[4 Documents / Resources](#)

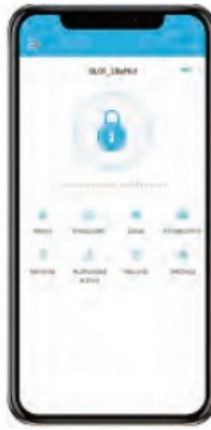
[4.1 References](#)




## OLUMAT B35 Smart Lock with App



### APP UNLOCK/LOCK

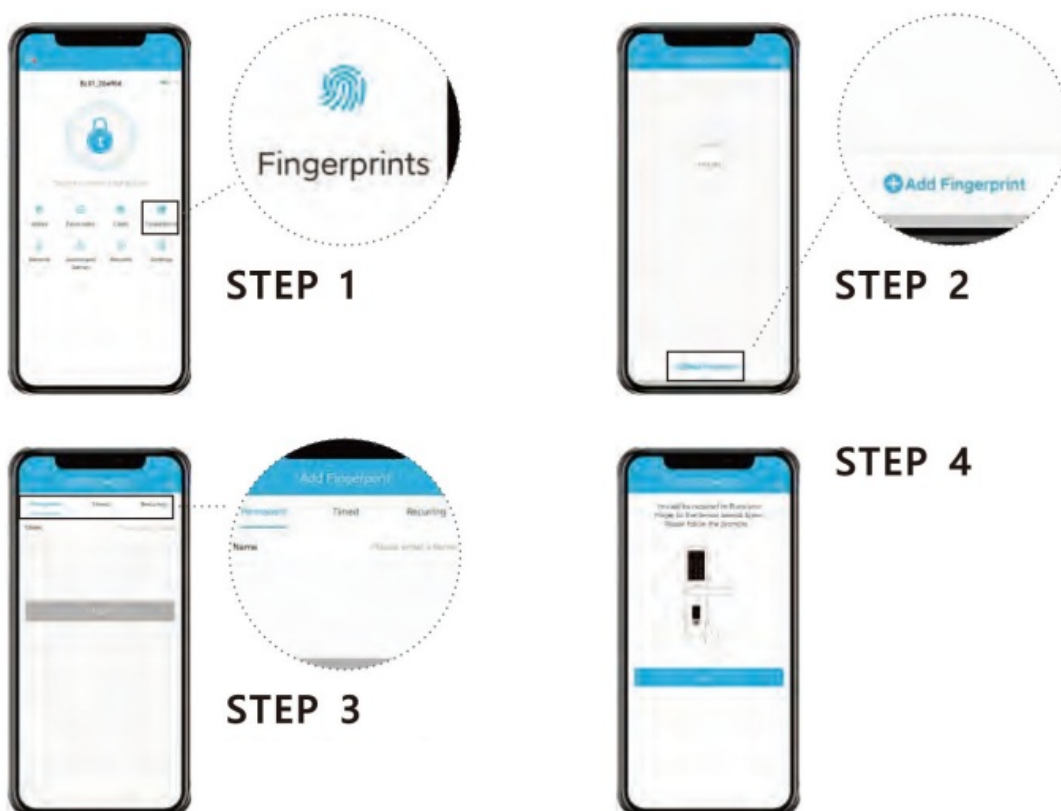


-  To unlock the lock, tap this icon once.
- To lock the lock, press and hold on this icon.

**Note:** This will only work while you are within bluetooth range of the lock. Refer to the Wifi Gateway Guide page for remote unlock/lock information.

## FINGERPRINTS

To add a fingerprint, follow these instructions:



### STEP 1

Tap on Fingerprints.

## STEP 2

Tap on “Add Fingerprint.”

## STEP 3

Select fingerprint type depending on when you would like it to be valid.

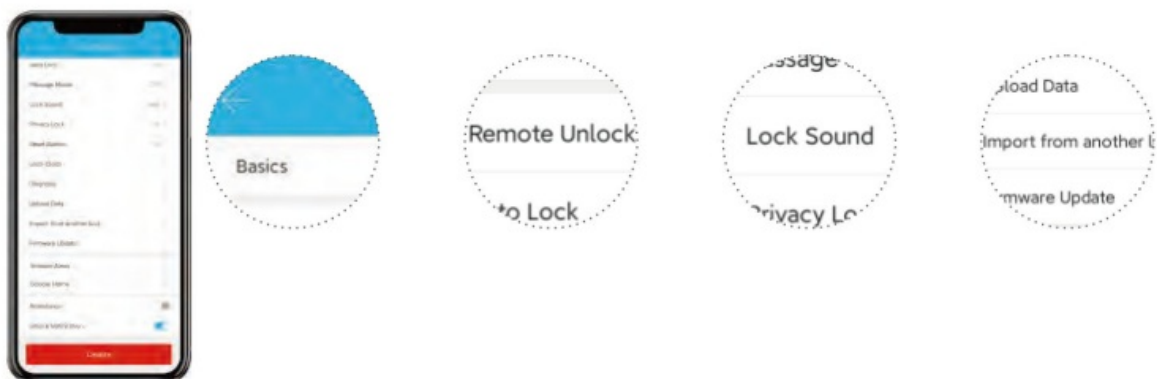
## STEP 4

Follow the instructions on app. You will be asked to place your finger on the sensor 4 times.

## Experiencing issues with fingerprint recognition?

- Ensure the sensor surface is clean.
- Try a different finger.
- Ensure your finger is moist enough.
- Take out the batteries for one minute and place back in.

## LOCK SETTINGS



- Here are some settings you should familiarize yourself with.
- Under Basics, you can view and change information such as Lock Name.
- With Remote Unlock on and a Wifi Gateway connected, you can remotely unlock/lock your lock.
- Lock Sound adjusts the locks sound level.
- Import from another lock allows for the transfer of passcodes and fobs from one lock to another.
- Delete will remove the lock from your account and clear any settings on the lock. You must be near the lock to do this.

## HOW TO REGISTER

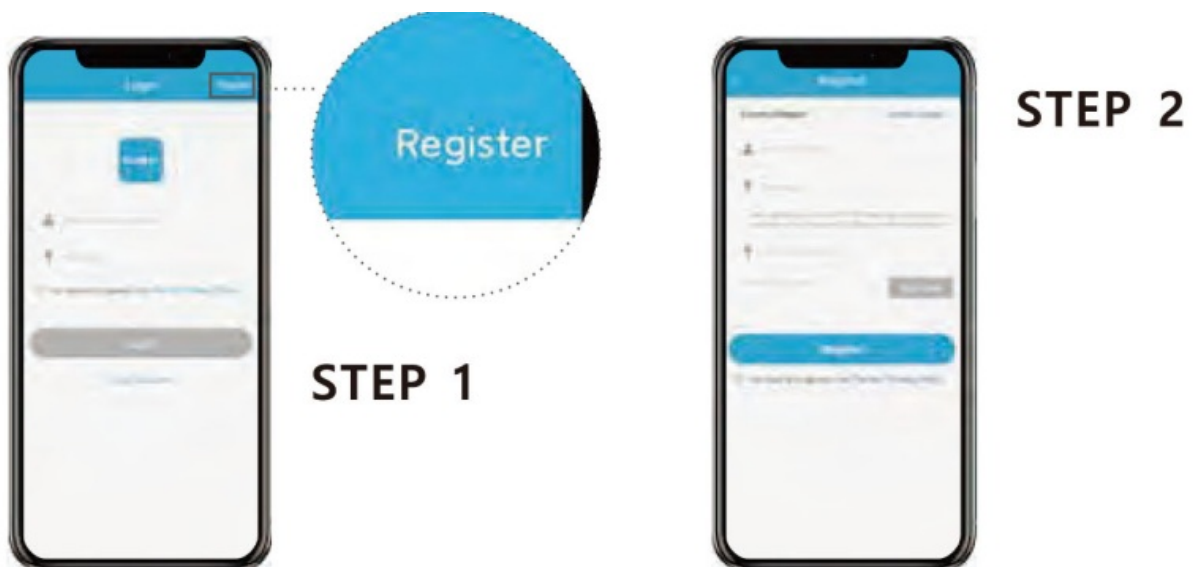
Download the Olumat Home app from Google Play or App Store. Search “Olumat Home”



**STEP 1** Tap on register to get started!

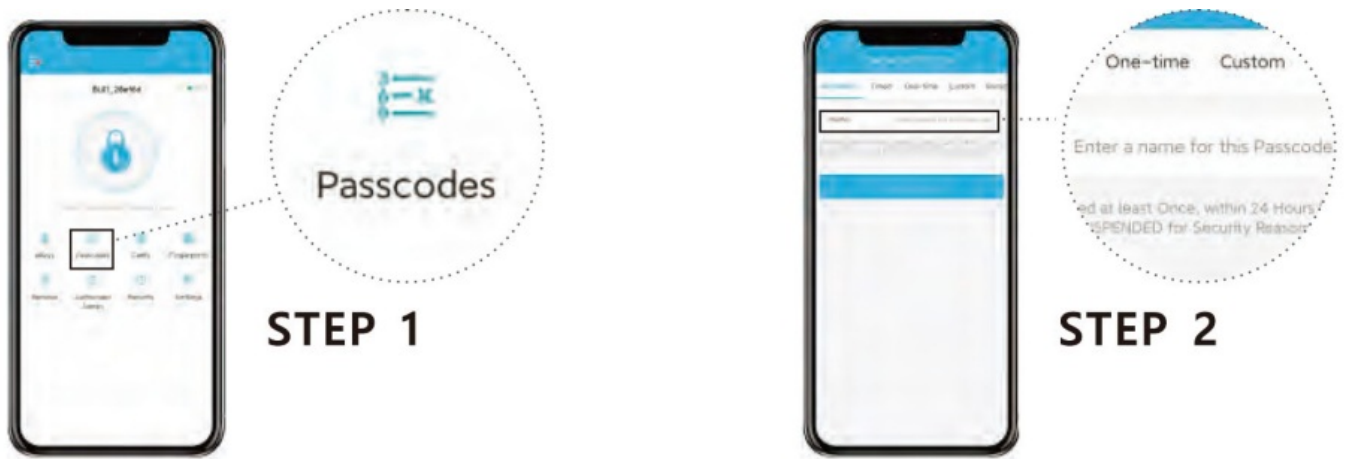
### STEP 2

Fill out this and then tap “Get Code” . You will be sent a verification code to verify your account! Once, you receive it, tap on “Register”



**Note:** The Olumat Home app is needed to use this lock. If this lock was professionally installed (or installed by someone other than the homeowner), make sure this step 1s performed by the homeowner.

## PASSCODES



## STEP 1

To access the passcode menu, tap on “Generate Passcode”. This will take you to the passcode page.

**STEP 2** Enter a name for this Passcode.

Here is a breakdown of the 6 different code types for different durations.

|           |                              |           |  |
|-----------|------------------------------|-----------|--|
| Permanent | Lasts permanently            | Erase     | Erases all codes on lock                                   |
| Timed     | Lasts between selected hours | Custom    | Choose your own digits such as 654321 (permanent or timed) |
| One-time  | Lasts for one use            | Recurring | Lasts during scheduled hours weekly                        |

## eKEYS

### Best Practices:

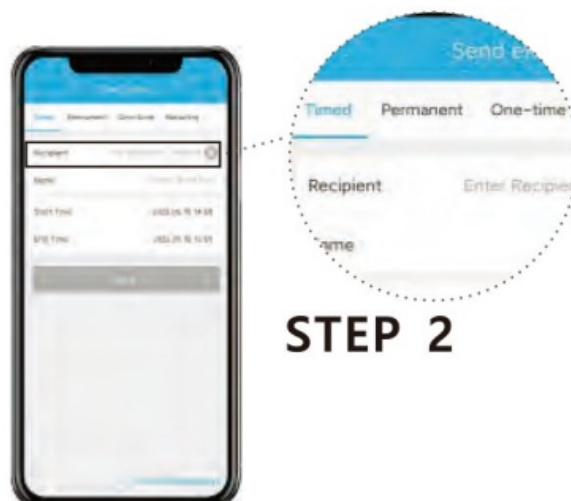
- It is strongly recommended that the recipient first register for an account using the Olumat Home app.

## STEP 1

eKeys work by sharing app access of your lock with another Olumat Home account. eKey recipients will be able to use their phone to unlock/lock the lock.

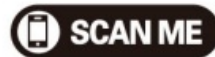
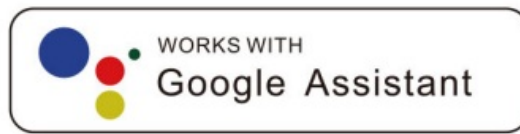
## STEP 2

Enter the recipient's username. It will be the phone number or email address used during registration. eKeys do not require wifi or bluetooth to be sent or revoked.



## INTEGRATIONS

Our locks work with the following software:



With more to come in the near future. Scan this code to find out how to pair the gateway to app

## **WIFI GATEWAY**

Wifi Gateway bridges any nearby locks to your local wifi allowing for remote control.



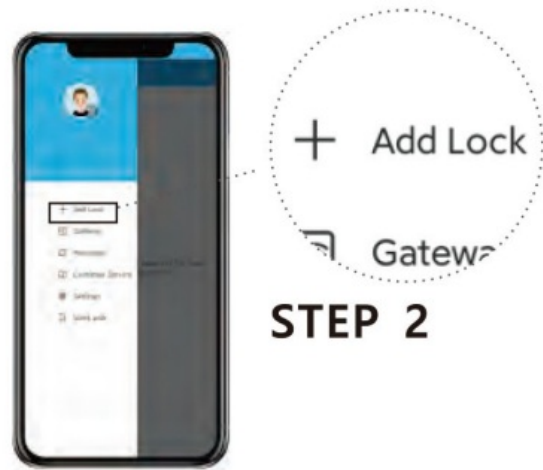
**With the WIFI Gateway connected.**

- Receive unlock notifications wherever you are.
- Remote unlock/lock.
- Check access logs whenever you need them.
- Generate, edit, or delete custom codes for your guests.
- Access the features of the web portal version of our app for free!
- Check battery level remotely.

## **PAIRING YOUR LOCK**



**STEP 1**



**STEP 2**



**STEP 3**



**STEP 4**

**STEP 1** Tap on the three horizontal lines.

**STEP 2** Tap on “Add Lock”

**STEP 3** Tap on “Next”

**STEP 4**

Tap on the blue plus sign.

**Note:** You may need to tap on lock keypad.

**PASSCODES**





### Best Practice:

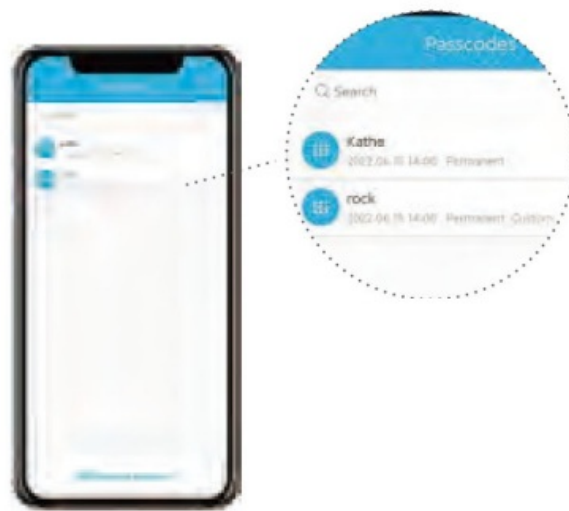
When inputting the passcode, use "Code + #".

### Within this page, you can

1. Edit a passcode's number, validity, and name.
2. Delete code and view records.

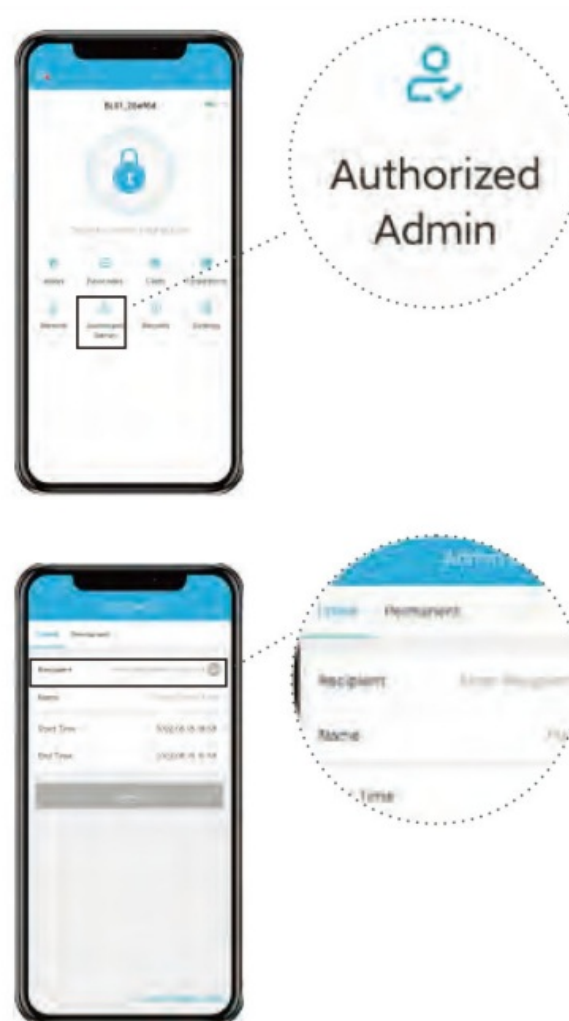
Pay attention to this text when generating a code. You may experience issues if these instructions are not followed.

**Note:** To generate custom codes, you will need to be within bluetooth range of the lock unless a W1f1 Gateway 1s connected.



**Note:** The above can only be done within bluetooth range unless a Wifi Gateway is connected.

## AUTHORIZED ADMIN



## STEP 1

Authorized Admins are similar to eKeys; however, an authorized admin can do the

following:

1. Unlock/lock via the app.
2. Generate, Edit, Delete passcodes, IC cards, and fingerprints
3. Adjust settings like passage mode, auto-lock timer, turn on/off the lock sound.






## STEP 2

Enter the recipient's username. It will be the phone number or email address used during registration.



## LOCK PAGE OVERVIEW



-  **Unlock/Lock** Unlock/Lock using phone's bluetooth
-  **eKeys** Set up and send eKeys
-  **Passcodes** Set up and generate 6 different types of passcodes
-  **Cards/Fobs** Set up your fobs here
-  **Fingerprints** Set up fingerprints

- 



## PASSAGE MODE & AUTO-LOCK



## STEP 1



## STEP 2



## STEP 3

### STEP 1

Auto-lock will automatically lock the lock when it has be opened after 5 second by default. This can be adjusted with Passage Mode and Auto-lock timer. Outlined below is how to adjust these settings related to auto-lock.

### STEP 2

Select Passage Mode

### STEP 3

Passage Mode disables auto-lock during a set schedule.

## Return and Warranty Information

### Return Policy

30-day money-back guarantee from date of purchase. Some exceptions may be made with a restocking fee on a case-by-case basis and the buyer may be responsible for return shipping cost. For inquiries regarding this, please contact us at

[olumatsafe@gmail.com](mailto:olumatsafe@gmail.com).

## **Product Warranty**

We offer a 1 year free replacement from the date of purchase. To claim your warranty replacement, the first request or inquiry must be made within 1 year of date of purchase. Any requests or inquiries after 1 year from the date of purchase are not eligible for warranty. Olumat reserves the right to deny a replacement request. For inquiries regarding this, please contact us at [olumatsafe@gmail.com](mailto:olumatsafe@gmail.com).

## **FAQS**

Q: I entered a code or fingerprint incorrectly too many times and my lock will not accept any new inputs .

A: Unlock the lock once via the app or wait 5 minutes.

Q: The batteries died before I could replace them. What can I do?

A: Use the provided physical keys to open or plug in a powerbank into the slot on the underside of the keypad to power it up to be able to enter and change the batteries.

Q: How do I share access of the lock on 2 different phones?

A: Refer to eKeys or Authorized Adm in section on how to do that is. \*Not working like it should? Contact us with the following information for quicker resolution.

Which product do you have?

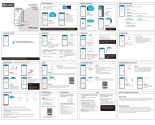
\*Where are you in the setup process? installing the product. \*Setting up the app and pairing the product. Already set up app with the product.

**How long have you had our products for?**

Here is how you can contact us: Web: [www.olumatsafe.com](http://www.olumatsafe.com)

E-mail- [olumatsafe@gmail.com](mailto:olumatsafe@gmail.com)

## Documents / Resources

|   |   |
|---|---|
|  | <a href="#">OLUMAT B35 Smart Lock with App [pdf]</a> User Guide<br>2BLHZ-B35, 2BLHZB35, B35 Smart Lock with App, B35, Smart Lock with App, Lock with App, Lock, App |
|---|---|

## References

- [User Manual](#)

■ OLUMAT

🔍 2BLHZ-B35, 2BLHZB35, app, B35, B35 Smart Lock with App, Lock, Lock with App, OLUMAT, Smart Lock with App

---

## Leave a comment

Your email address will not be published. Required fields are marked \*

Comment \*

Name

Email

Website

☐ Save my name, email, and website in this browser for the next time I comment.

**Post Comment**

**Search:**

e.g. whirlpool wrf535swhz

**Search**

[Manuals+](#) | [Upload](#) | [Deep Search](#) | [Privacy Policy](#) | [@manuals.plus](#) | [YouTube](#)

This website is an independent publication and is neither affiliated with nor endorsed by any of the trademark owners. The "Bluetooth®" word mark and logos are registered trademarks owned by Bluetooth SIG, Inc. The "Wi-Fi®" word mark and logos are registered trademarks owned by the Wi-Fi Alliance. Any use of these marks on this website does not imply any affiliation with or endorsement.