




OLIMPLA 263911A OS Comfort App User Manual

[Home](#) » [OLIMPLA](#) » OLIMPLA 263911A OS Comfort App User Manual 

OLIMPLA 263911A OS Comfort App



living



- 75°F +



Room temperature: 75°C

Cooling mode enabled



Contents

- 1 WARNINGS
- 2 DOWNLOADING AND INSTALLING THE APP
- 3 NETWORK CONFIGURATION
- 4 HOW TO USE APP
- 5 SPECIAL FUNCTIONS
- 6 SCENES
- 7 FINAL WARNINGS
- 8 Customer Support
- 9 Documents / Resources
 - 9.1 References
- 10 Related Posts

WARNINGS

1. Not all versions of iOS and Android are compatible with the app. We will not be responsible for any issue resulting from this incompatibility. The APP is subject to updates without notice. Check compatibility with the operating system of your device before installing it on the device itself.
2. Smart kit only supports WPA-PSK/WPA2-PSK encryption. Do not use any other type of encryption.
3. Make sure that the camera of the device on which the app is going to be used is at least a 5 million pixels camera, in order to be able to read the QR code.
4. Due to the different network conditions, a request time-out may occur. In this case, it'll be necessary to repeat the network configuration procedure.
5. Due to the different network conditions, a time-out could occur during the control process.
6. The procedure for installation and configuration of the APP may be slightly different from what is described and installed on this manual. Proceed as indicated in the APP.



Please keep you APP up to data with the latest version.



We will not be responsible for issues caused by the internet, by the Wi-Fi router and by smart devices. Please contact the original provider for assistance.

DOWNLOADING AND INSTALLING THE APP

1. Open “App Store” or “Google Play” respectively.



2. Search the “OS Comfort” app.
3. Download the app.

As an alternative, it is possible to scan the following QR codes:

Android



iOS



NETWORK CONFIGURATION



It is necessary to make sure that the Android or iOS device connects solely to the Wi-Fi network the user wants to configure.



Make sure that the Android or iOS device Wi-Fi function works correctly and that the device automatically reconnects to the original Wi-Fi network.



Make sure that the Wi-Fi band is at 2.4 GHz.

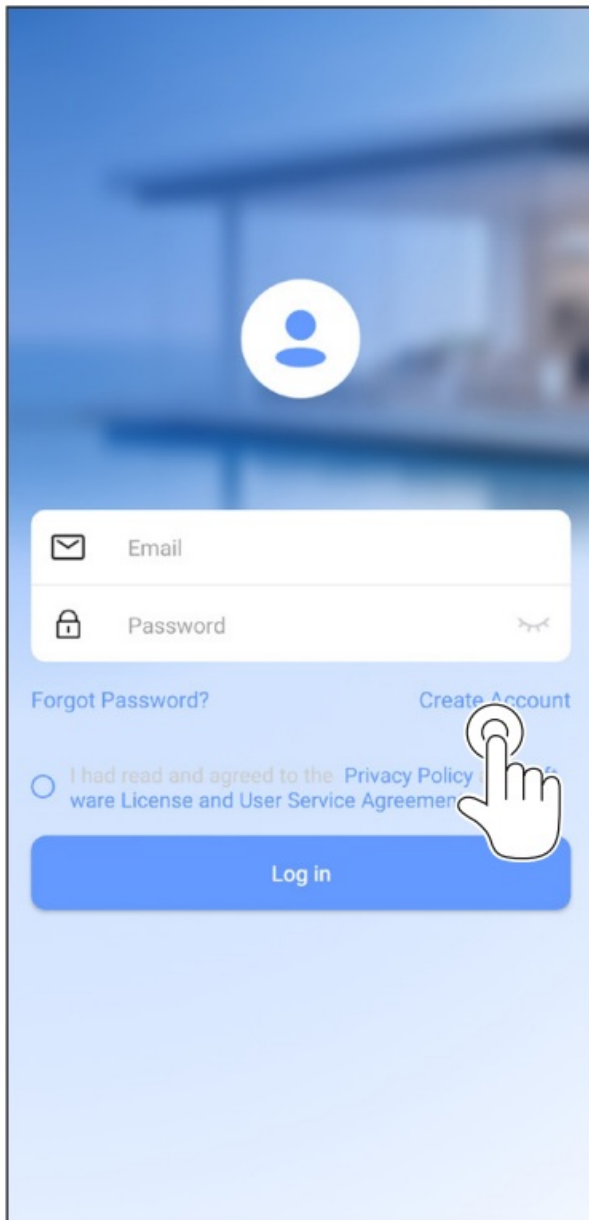


The air conditioner cannot be controlled by the remote while under configuration.
Make sure that the device is connected to a Wi-Fi router.

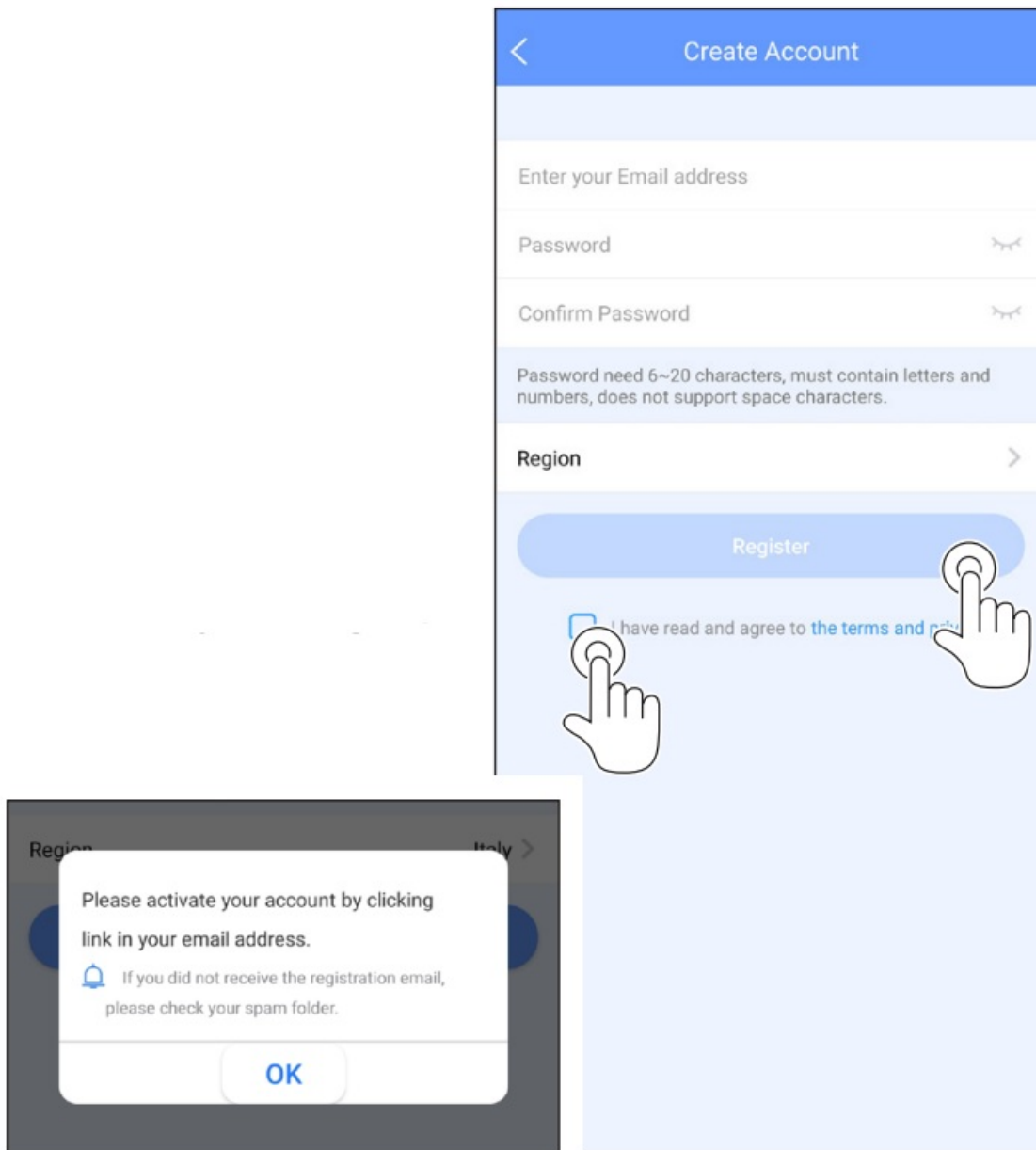


Make sure that the Wi-Fi router is connected to the internet before proceeding with the user registration and the network configuration.

1. Click on "Create account".



2. Sign in.
 - 2a. Enter your email.
 - 2b. Enter the password respecting the characters required.
 - 2c. Confirm the password.
 - 2d. Select the country of use and accept the service terms.
 - 2e. Press on "Sign in".



3. After performing registration, a confirmation mail is sent to the entered email address.
View the mail and confirm registration by clicking on the specific link.

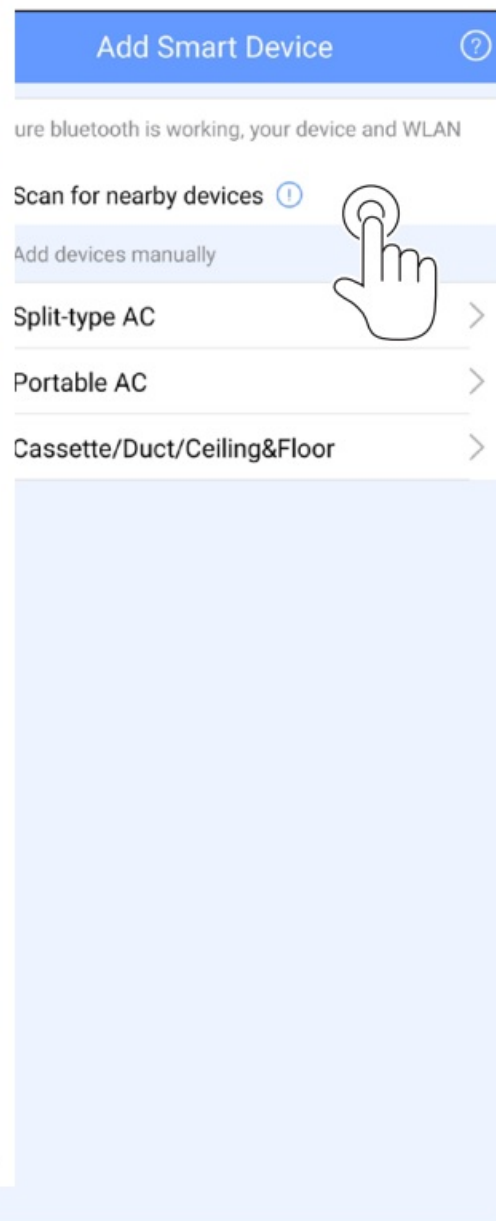
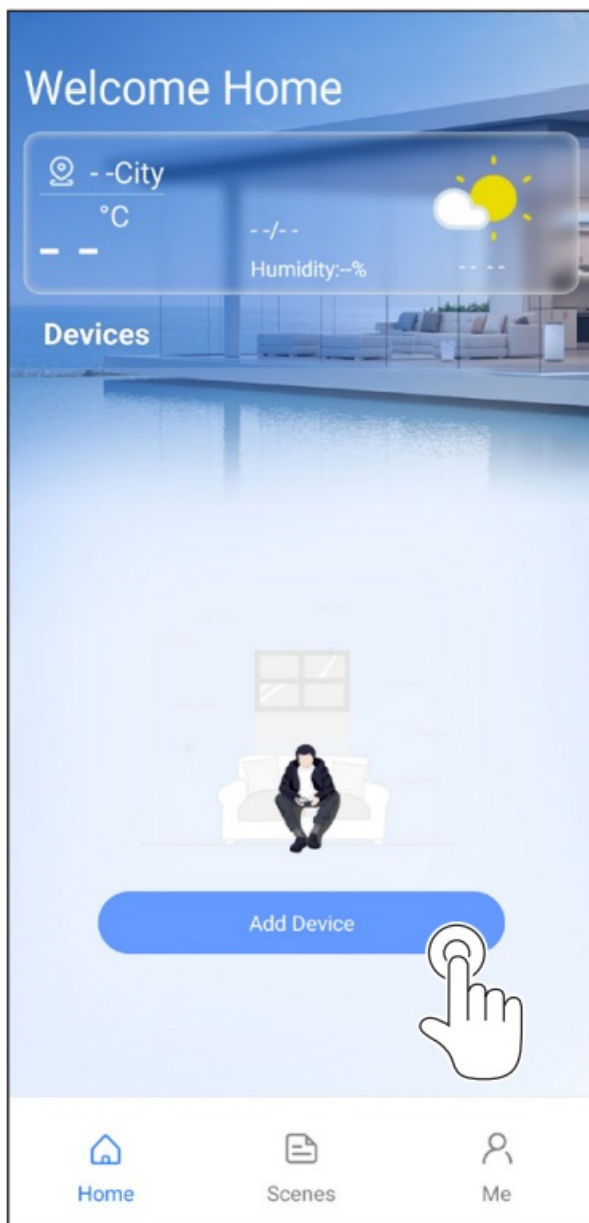
3.a – Network configuration through Bluetooth



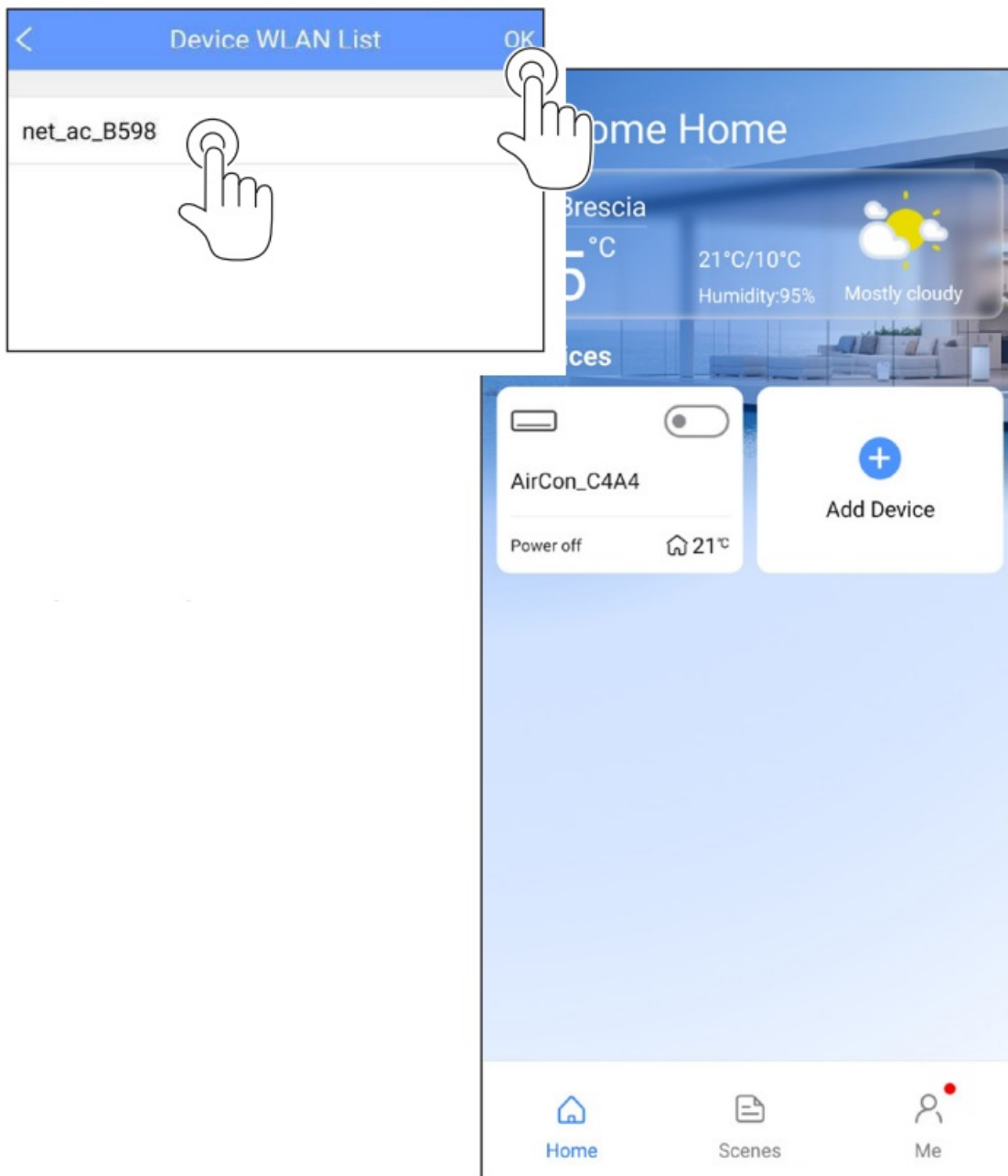
Make sure that Bluetooth of your mobile device works.

1. Click on “+ Add device”.
2. Click on “Scan for nearby devices”.

Make sure the appliance is in “scan for WiFi” mode; to activate this function on your own appliance, please consult the manual for use and maintenance.

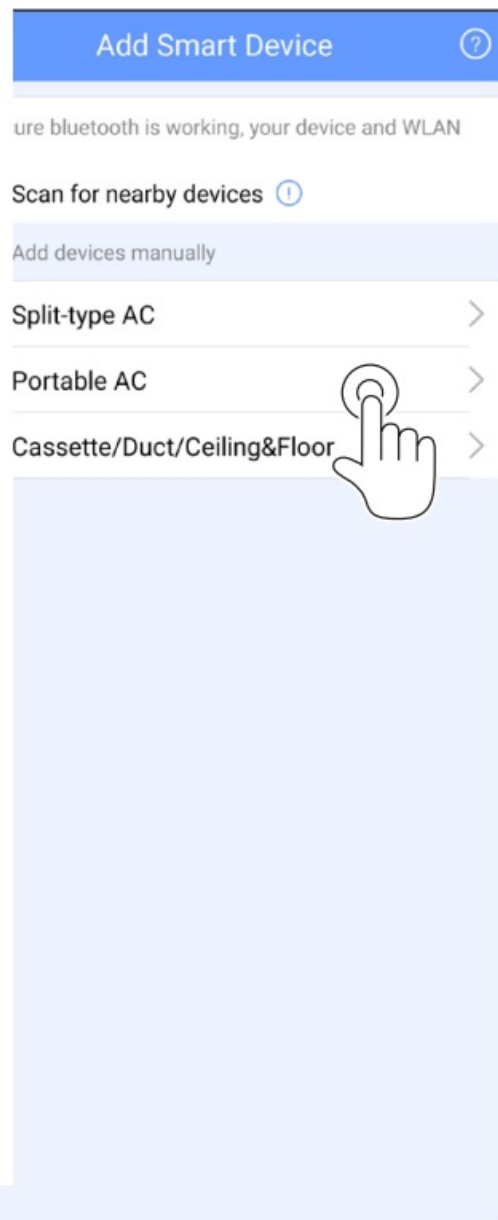
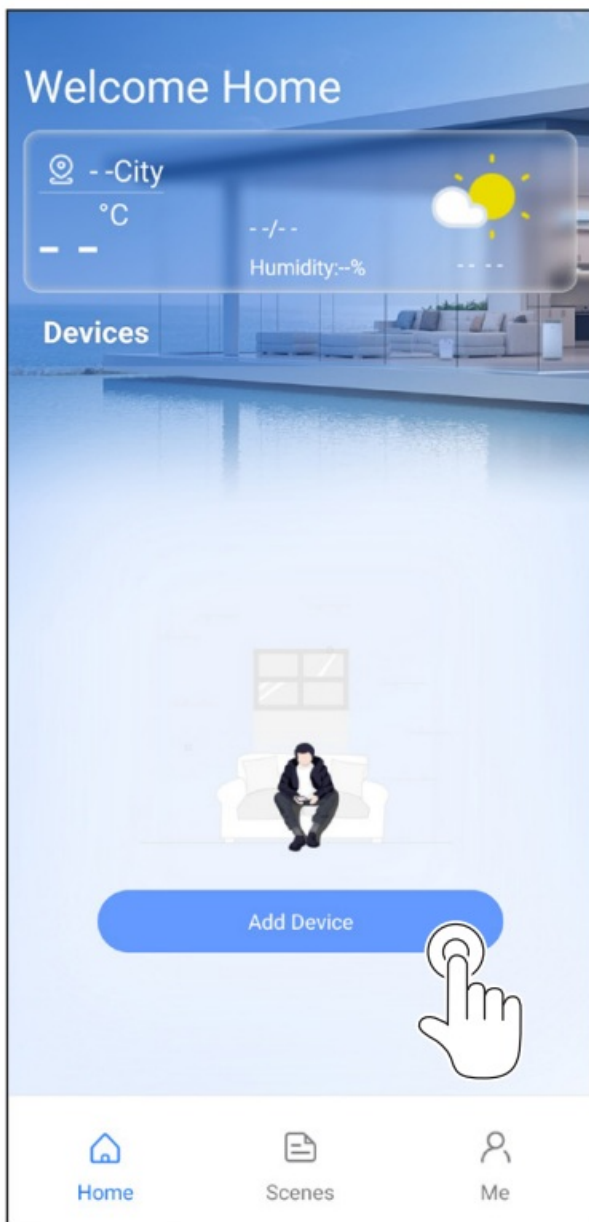


3. Wait for loading of the devices, then click on your device to make it connect.
4. Select the Wi-Fi network.
5. Enter the Wi-Fi network password, then click on "OK".



6. Wait for connection to the network.

Once loading is complete, it is possible to change the name of the connected appliance; the appliance appears on the list.



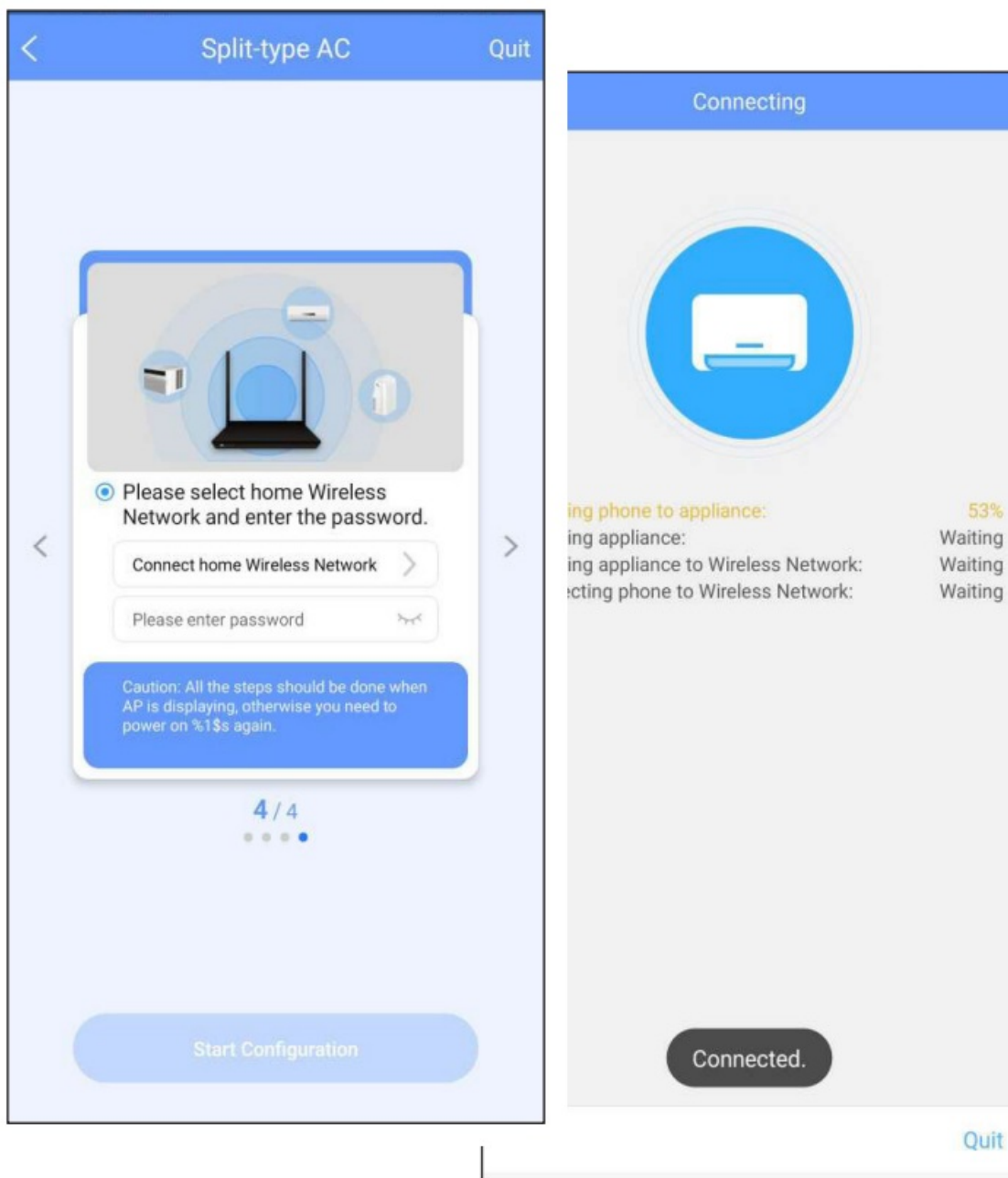
If it is not desired to use Bluetooth configuration, proceed with the configurations below.

3.b – Use of the device

1. Click on “+ Add device”.
2. Select the device.
3. Follow the instructions described in the app and click on “Next”.
4. Select the Wi-Fi network.



5. Enter the Wi-Fi network password and click on "OK".
6. If configuration has been successful, the appliance is displayed in the list.

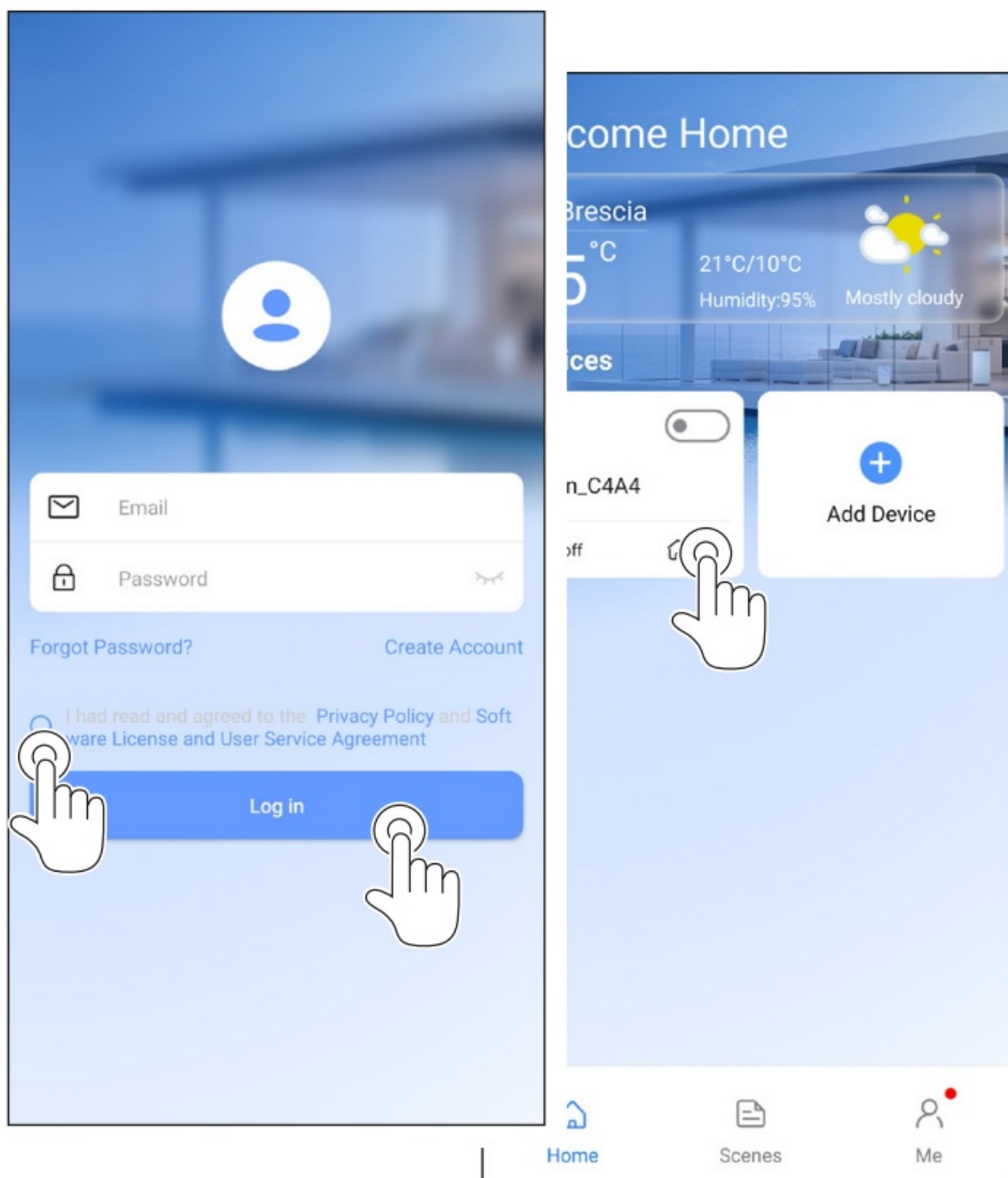


- Once the network configuration is over, the app notifies the end of the operation on the screen.
- Due to the different network conditions, the device status could still appear as “offline” after configuration. In this case, update the list of the devices registered on the app and make sure they are “online”. Alternatively, disconnect and reconnect the air conditioner power cord.
After a few minutes, the air conditioner will appear as “online”.

HOW TO USE APP

Make sure the mobile device and the air conditioner are connected to the Internet before using the app in order to control the air conditioner via internet (the WiFi symbol must be illuminated on the display), follow the steps below:

1. Digit your account user name and password. Accept the service terms; click on “Sign in” afterwards.
2. Select the air conditioner that you want to control with the app to access to the main control interface.



3. From this screen, the user can check the air conditioner status ("ON" or "OFF"), its operation mode, temperature, the fan speed, etc.

Some app functions could not be available on a certain air conditioner.

Consult the instructions manual for more information.

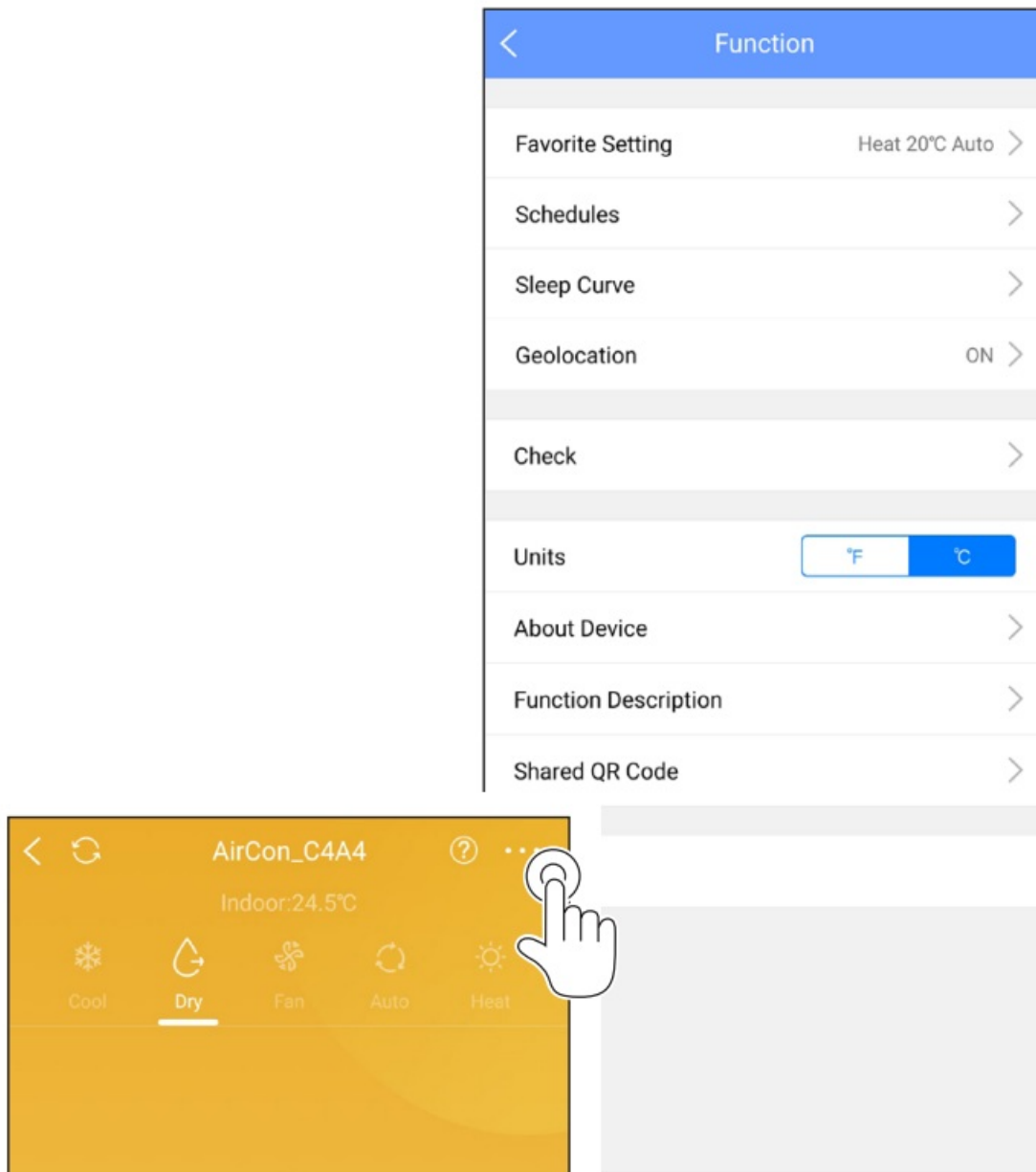


SPECIAL FUNCTIONS

The app allows to control the air conditioner special function too, such as:

- a. Timer ON / Timer OFF
- b. Scenes
- c. Sleep curve
- d. Geolocation
- e. Check
- f. Unit of measurement
- g. Share Device

To access to the special functions screen, click on the icon in the top right corner of the main control interface.

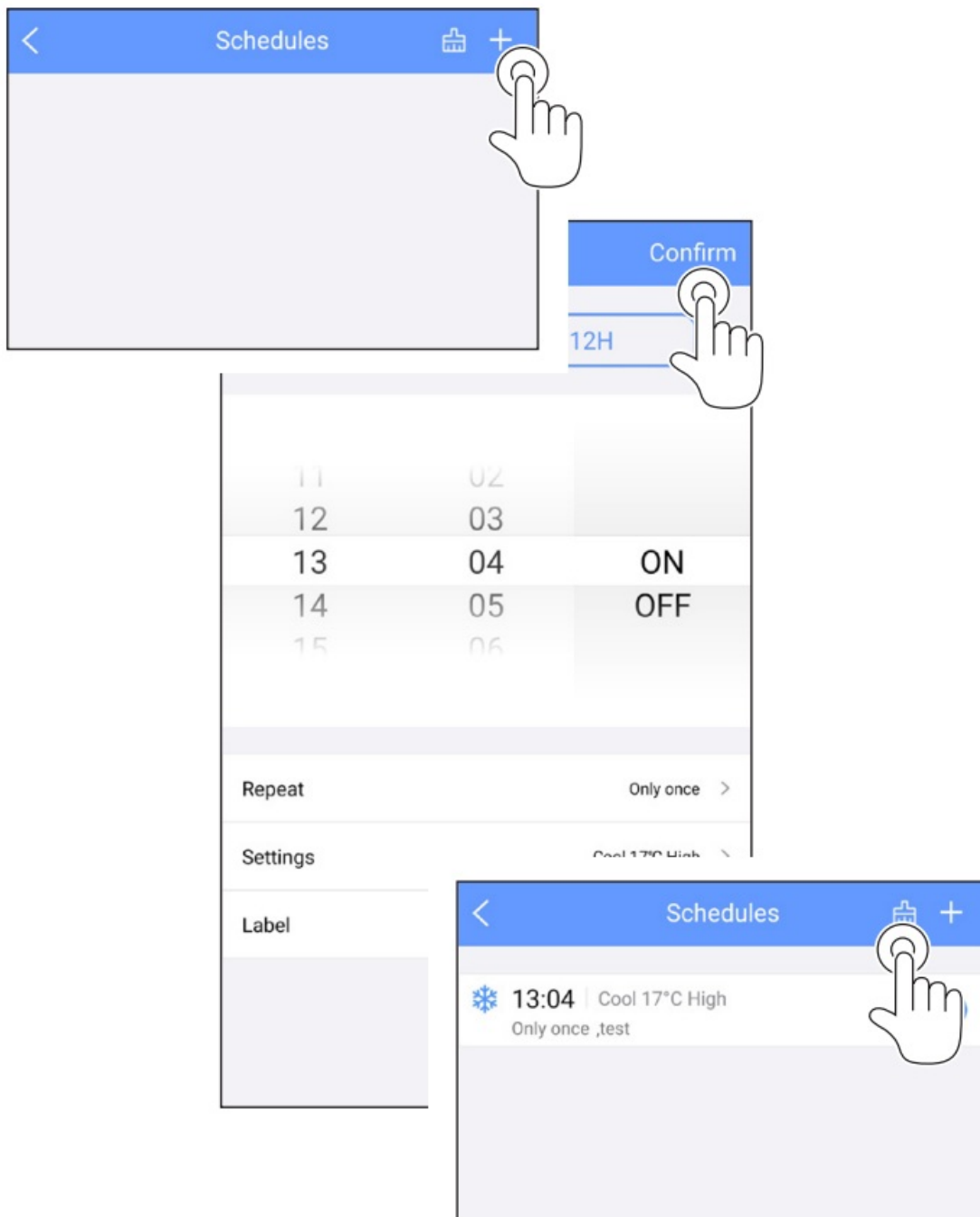


5.a – Timer ON / Timer OFF

To set a new scene, click on “+”.

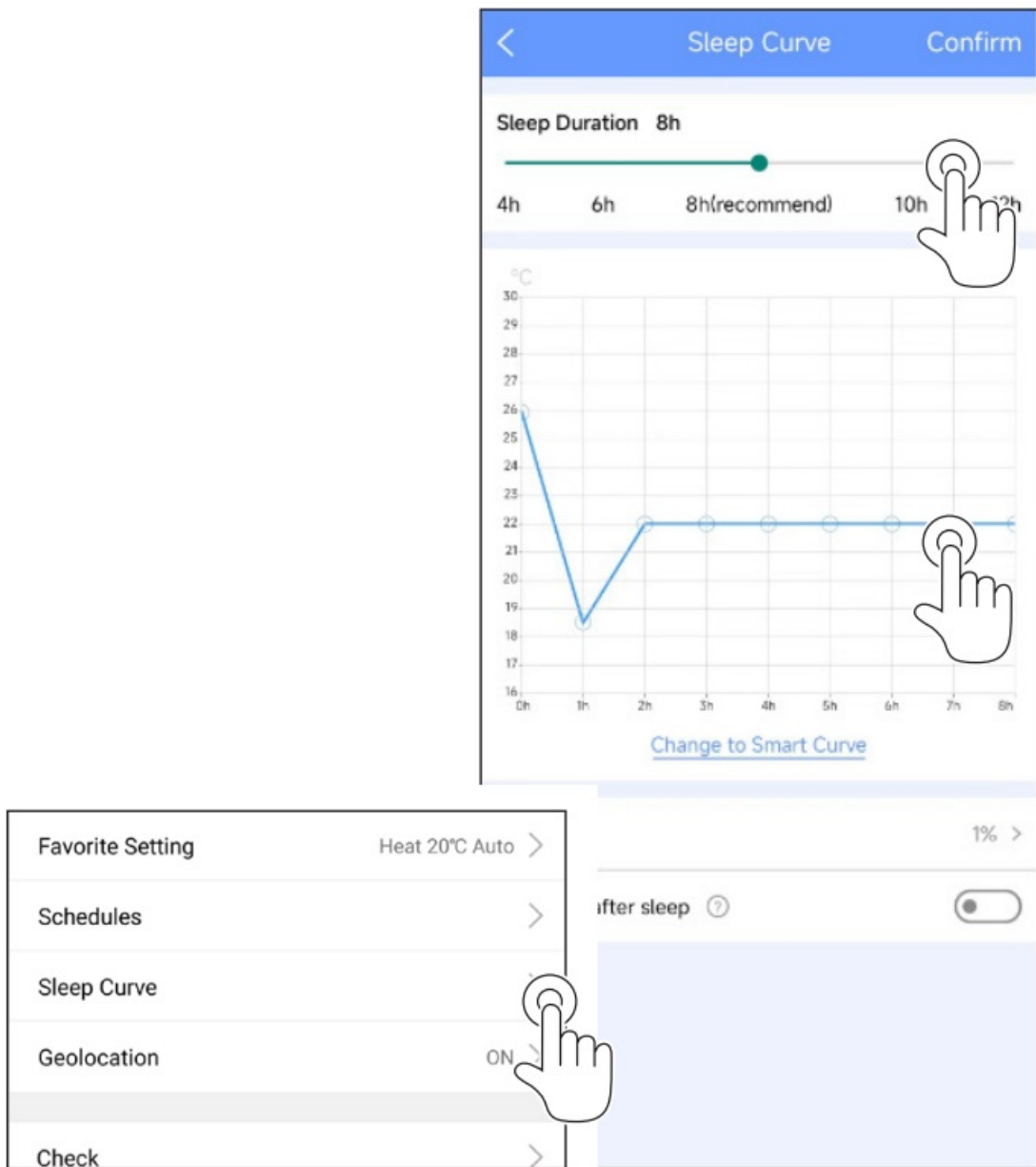
To eliminate all scenes, click on the icon present in the top right.

Weekly, the user can set the air conditioner so that it turns on or off at a particular hour of one or more days, the mode, the temperature and the fan speed.



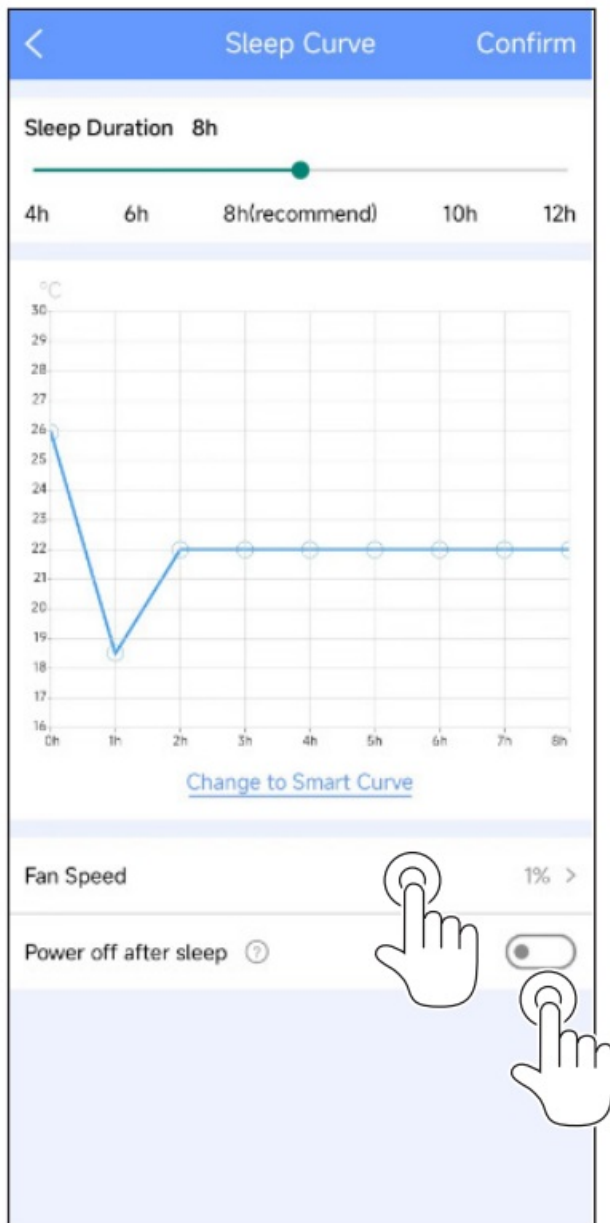
5.b – Sleep curve

It is possible to select the duration of sleep time in which the appliance remains on.
The user can set the ideal temperature that the air conditioner will maintain during nighttime.



Furthermore, it is possible to select the fan speed, which will be maintained for the entire night.

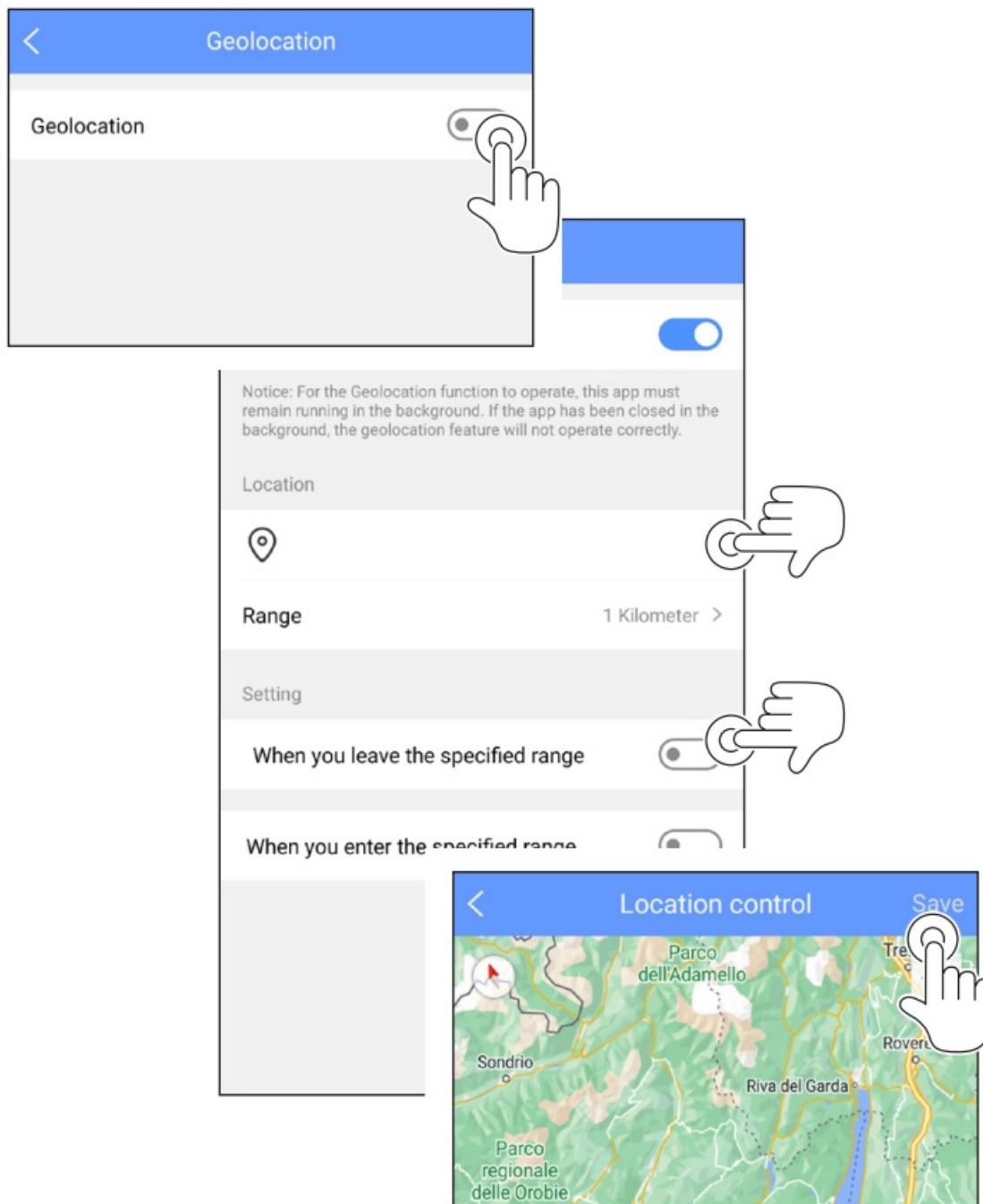
The user can activate or deactivate automatic switch off after the hours of sleep set.



5.c – Geolocation

The user can activate geolocation and set the radius of action from the point set on the map.

With this function it is possible to set the activation/deactivation of the settings when the app detects when the previously-set radius of action is entered or exited.



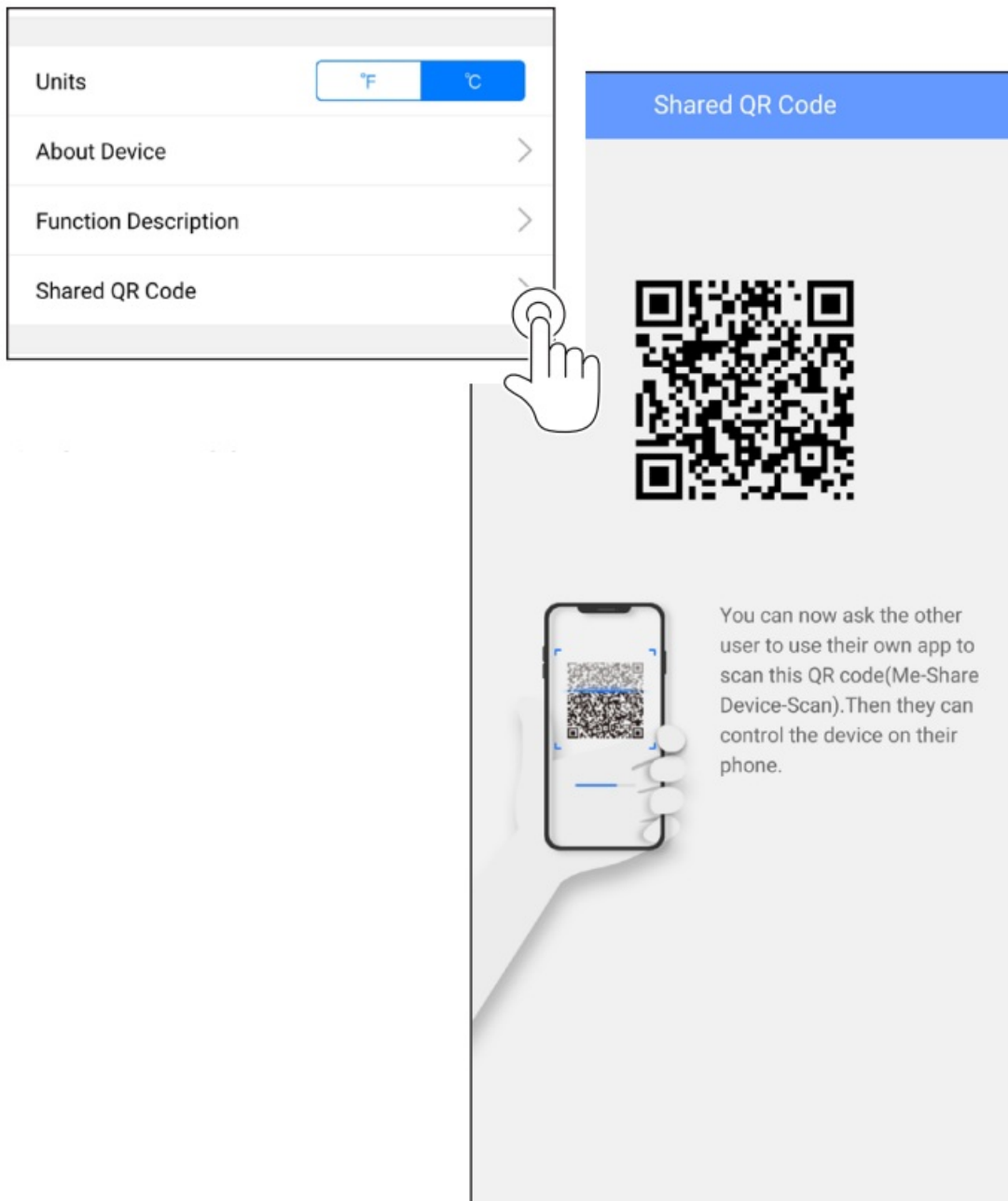
5.c – Check

With this function, the user can easily check the air conditioner correct functioning. Once the operation is over, the app shows normal and abnormal functioning elements.



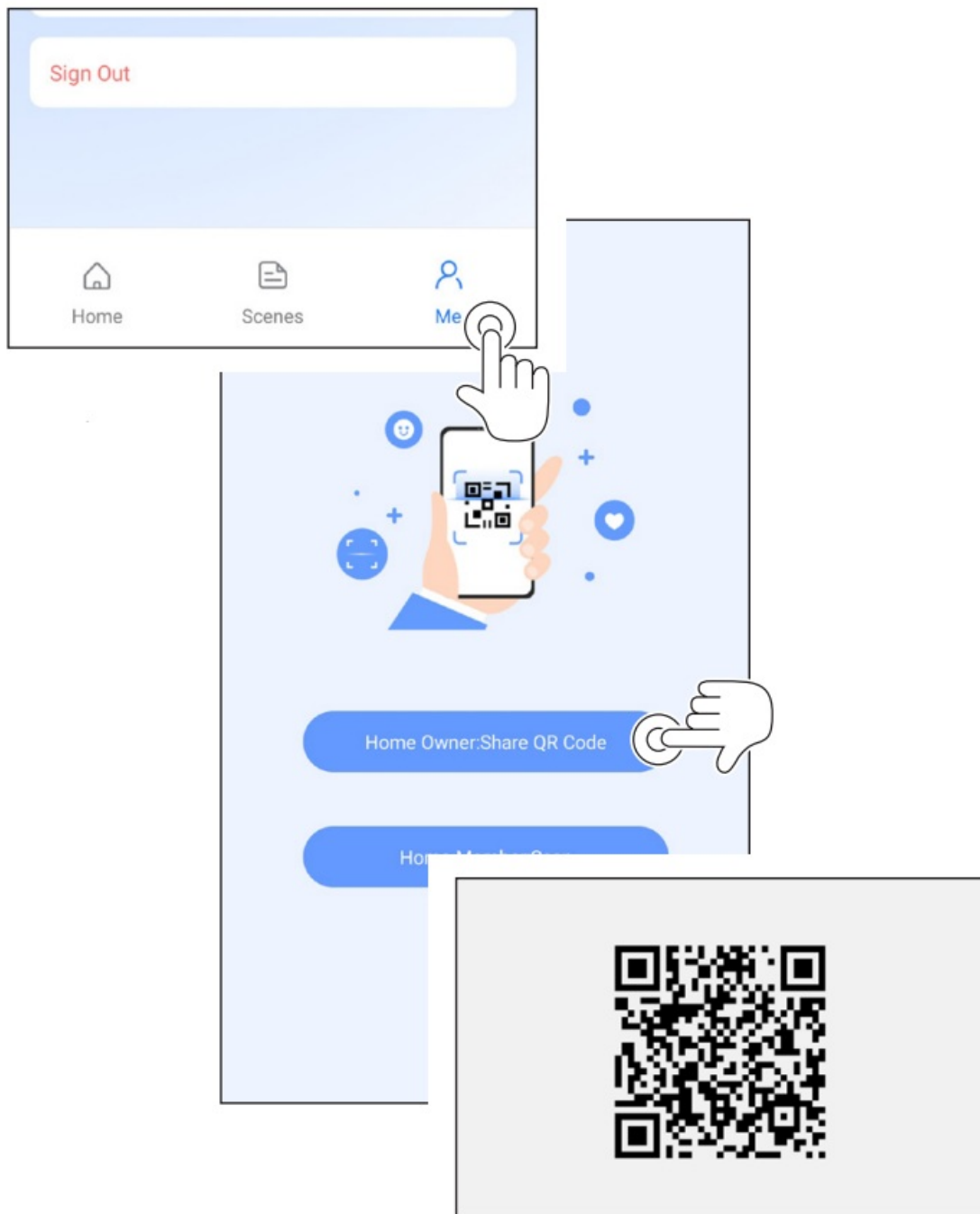
5.d – Share Device

The air conditioner can be controlled by multi-users at the same time by Share Device function. Click on “Share QR code” and the code linked to the selected appliance appears.

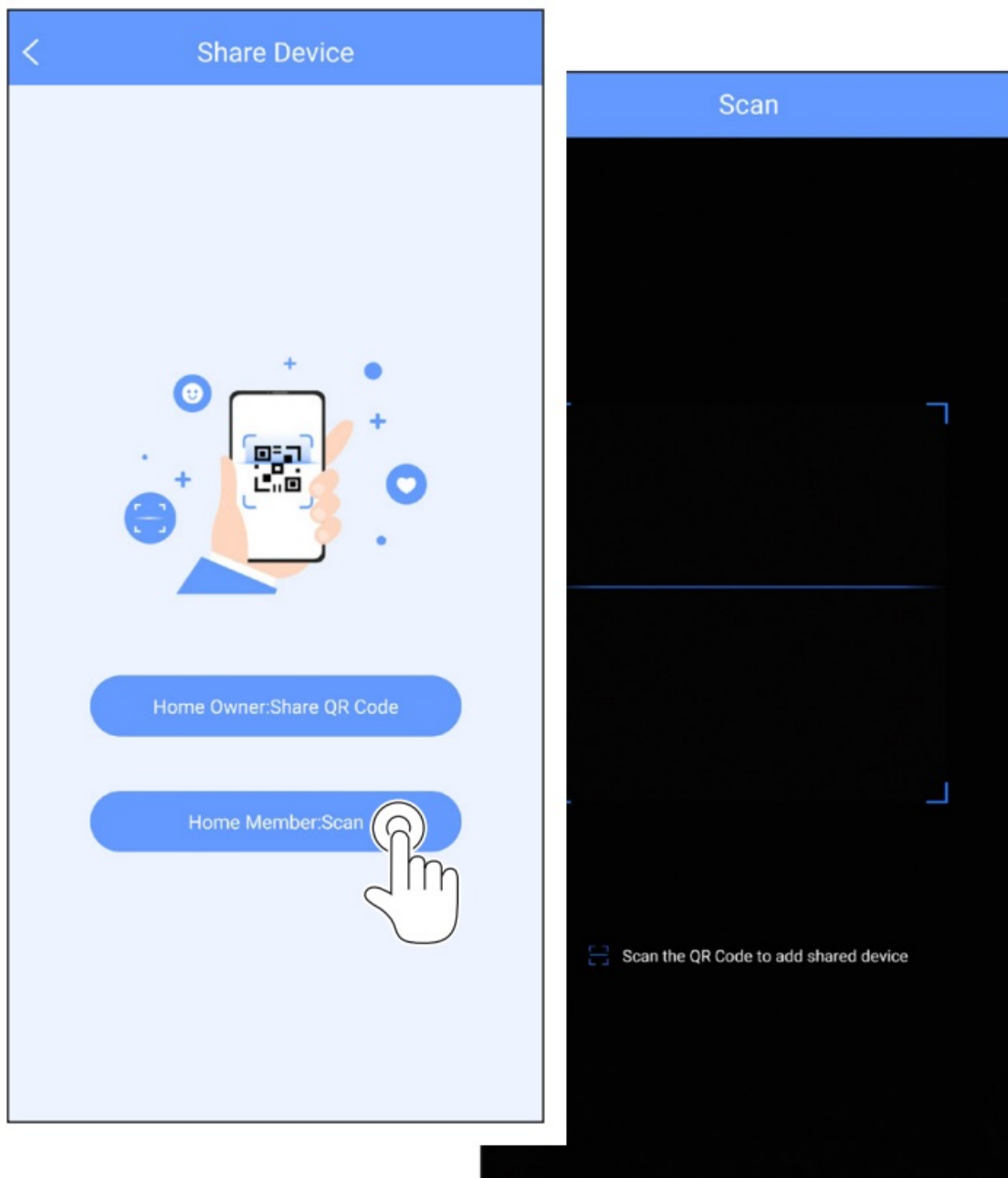


Another alternative is present in the “ME” screen.

Click on “Home Owner: Share QR Code”, select the device to share and access the QR code display screen.



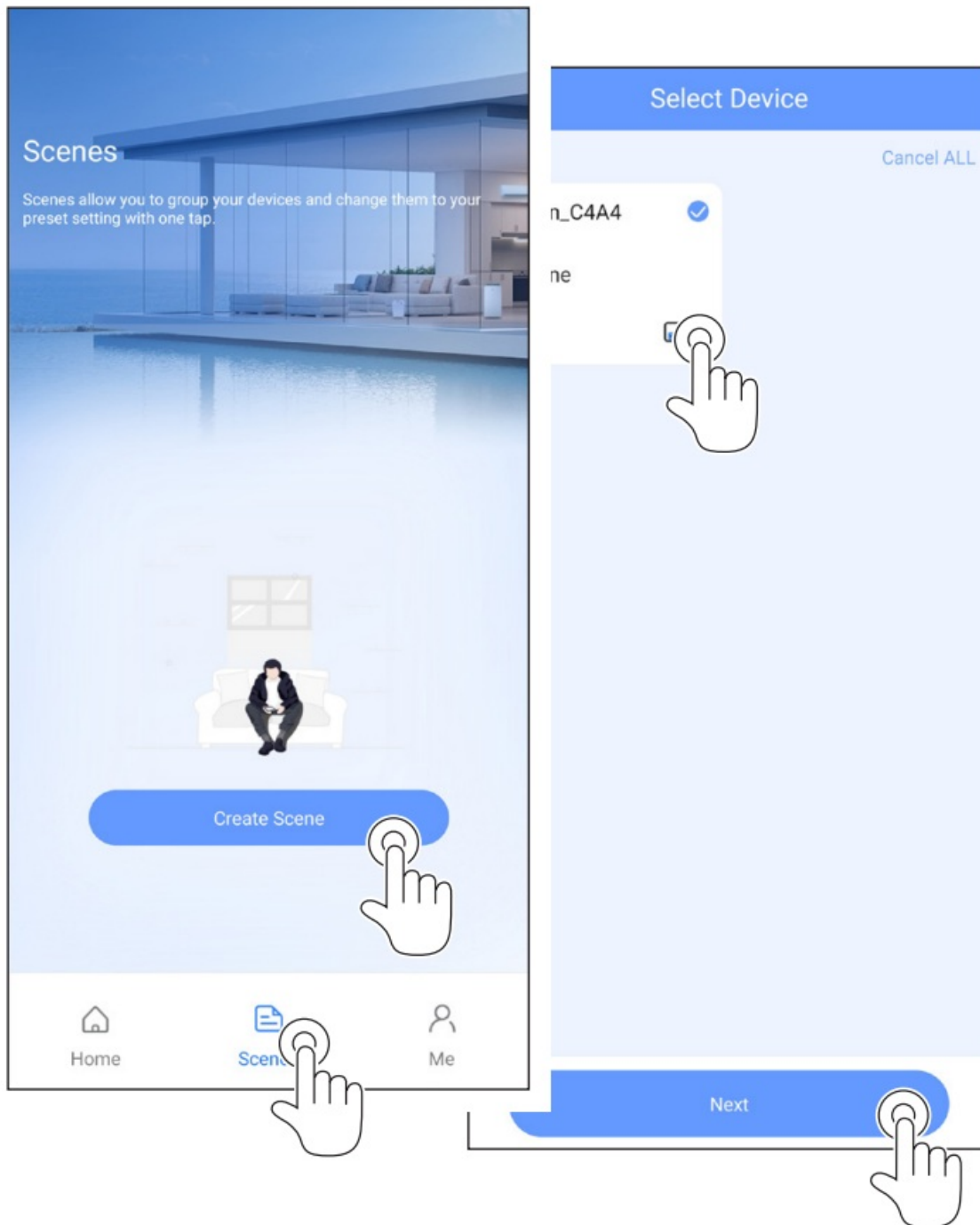
The other users must use their device to click on “Home member: Scan”, then scan the QR code.



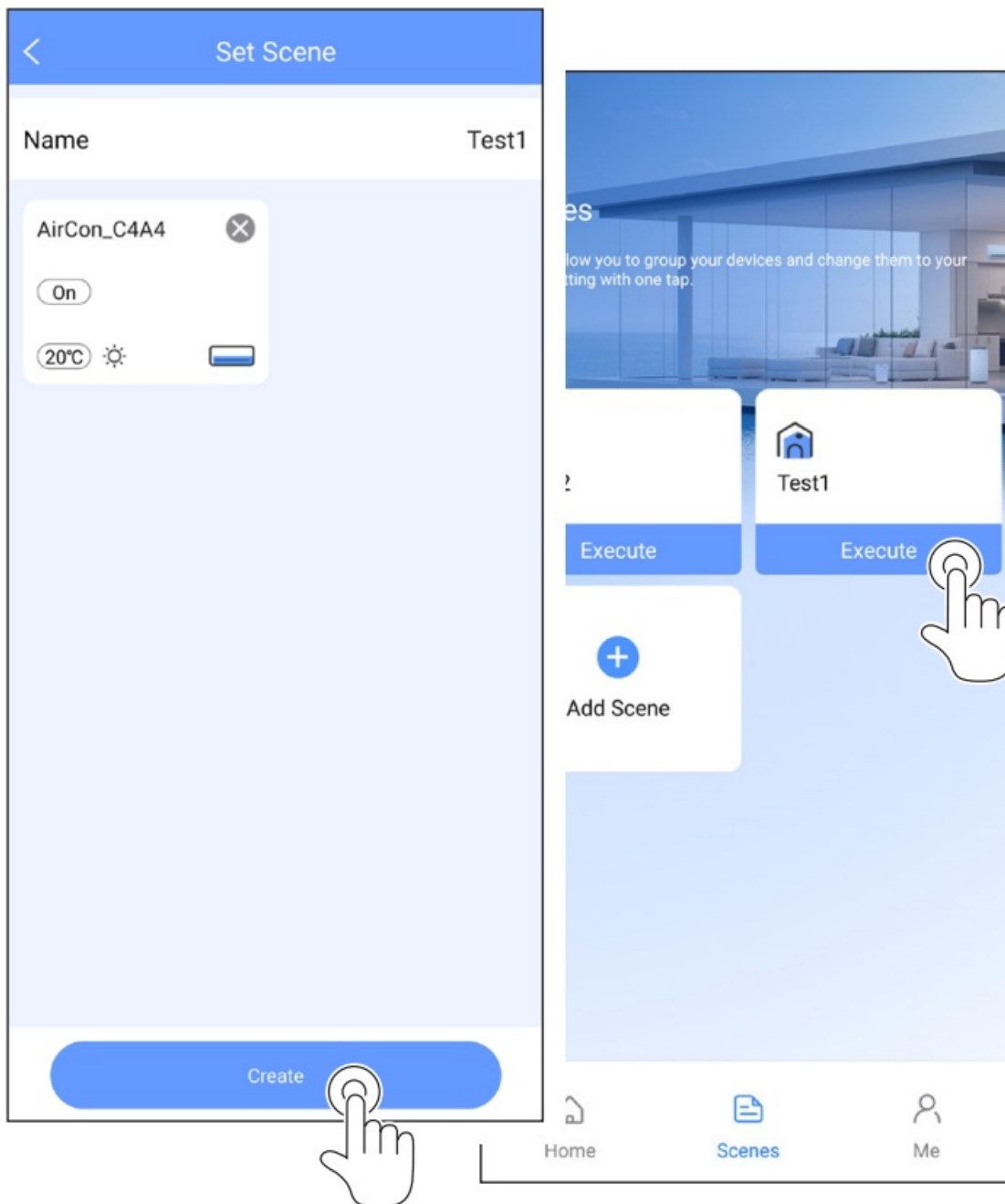
SCENES

The application allows scenes to be created to automate and program the appliance controls:

1. Enter the "Scenes" screen.
2. Click on "Create scene".
3. Select the appliance and click on "Next".



4. Introduce the name of the scene (e.g. Test1).
5. Click on the appliance to set switch-on and switch off. When switch-on is to be set, the mode, the temperature and the fan speed can also be selected.
6. Click on "Create" to save the scene; wait a few seconds to display the scene on the main screen.



FINAL WARNINGS



This product complies with Part 15 of the FCC Rules (Federal Communications Commission) RSS-210 (Radio Standards Specifications) of Industry & Science Canada.



The user must observe two fundamental requirements in order to be able to use the product:

1. This product may not cause harmful interferences;
2. This product must accept any kind of received interference, including those which could cause an undesired operation.



ALWAYS use the product respecting the supplied instructions.
This product complies with FCC and IC (Industry Canada) radiation exposure limits set forth for an uncontrolled

environment.



In order to avoid exceeding the FCC and IC radio frequency exposure limits, a distance of at least 20 cm must be kept from the antenna during normal operation.



Changes or modifications not expressly approved by the parties responsible for compliance could void the user's authority to use the appliance.



This equipment has been tested and found to comply with the limits for a Class B digital device, pursuant to part 15 of the FCC Rules. These limits are designed to provide reasonable protection against harmful interference in a residential installation. This equipment generates, uses and can radiate radio frequency energy and, if not installed and used in accordance with the instructions, may cause harmful interference to radio communications. However, there is no guarantee that interference will not occur in a particular installation.



If this equipment does cause harmful interference to radio or television reception, which can be determined by turning the equipment off and on, the user is encouraged to try to correct the interference by one or more of the following measures:

- Reorient or relocate the receiving antenna.
- Increase the separation between the equipment and receiver.
- Connect the equipment into an outlet on a circuit different from that to which the receiver is connected.
- Consult the dealer or an experienced radio/TV technician for help.



Company will not be liable for any issues and problems caused by Internet, Wireless Router and Smart Devices.

Please contact the original provider to get further help.



This manual has been created for informative purpose. The company declines every responsibility for the results of projecting or installation based on the explanations and the technical specifications given in this manual. Is besides forbidden the reproduction under any form of the texts and of the figures contained in this manual.

Customer Support

OLIMPIA SPLENDID spa

via Industriale 1/3

25060 Cellatica (BS)

www.olimpiasplendid.it

info@olimpiasplendid.it





References

- This website is an independent publication and is neither affiliated with nor endorsed by any of the trademark owners. The "Bluetooth®" word mark and logos are registered trademarks owned by Bluetooth SIG, Inc. The "Wi-Fi®" word mark and logos are registered trademarks owned by the Wi-Fi Alliance. Any use of these marks on this website does not imply any affiliation with or endorsement.