



OLIGHT Obulb Pro Multicolor Light with Bluetooth App Control User Manual

[Home](#) » [OLIGHT](#) » OLIGHT Obulb Pro Multicolor Light with Bluetooth App Control User Manual 

OLIGHT

Obulb Pro



OLIGHT
Multicolor Light with Bluetooth App Control
User Manual

Contents

- [1 HOW TO USE THE APP](#)
- [2 DEVICE CONNECTION](#)
- [3 OBULB PRO NETWORK SETTING MODE](#)
- [4 OBULB PRO AUTO SLEEP](#)
- [5 SEARCHING AND ADDING THE BULB PRO](#)
- [6 Documents / Resources](#)
 - [6.1 References](#)
- [7 Related Posts](#)

HOW TO USE THE APP

The OLIGHT APP is designed to connect and control compatible Olight devices through Bluetooth mesh networking.

DOWNLOAD AND INSTALLATION:

Before using, please download and install the OLIGHT APP on your mobile phone.

1. For iPhone, please download it from the "App Store".
2. For Android phones, please download them from the "Google Play Store".

DEVICE CONNECTION

1. Set the Obulb Pro to its network setting mode.
2. Enable the Bluetooth and GPS functions on your mobile phone and launch the OLIGHT APP.
3. Search and add the Obulb Pro.
4. Add successfully.

OBULB PRO NETWORK SETTING MODE

While the Obulb Pro is turned on with the white light setting, press and hold its button for 5 seconds until it flashes red and then green to enter the network setting mode. In this mode, users can search and add the Obulb Pro with the OLIGHT APP.

NOTES:

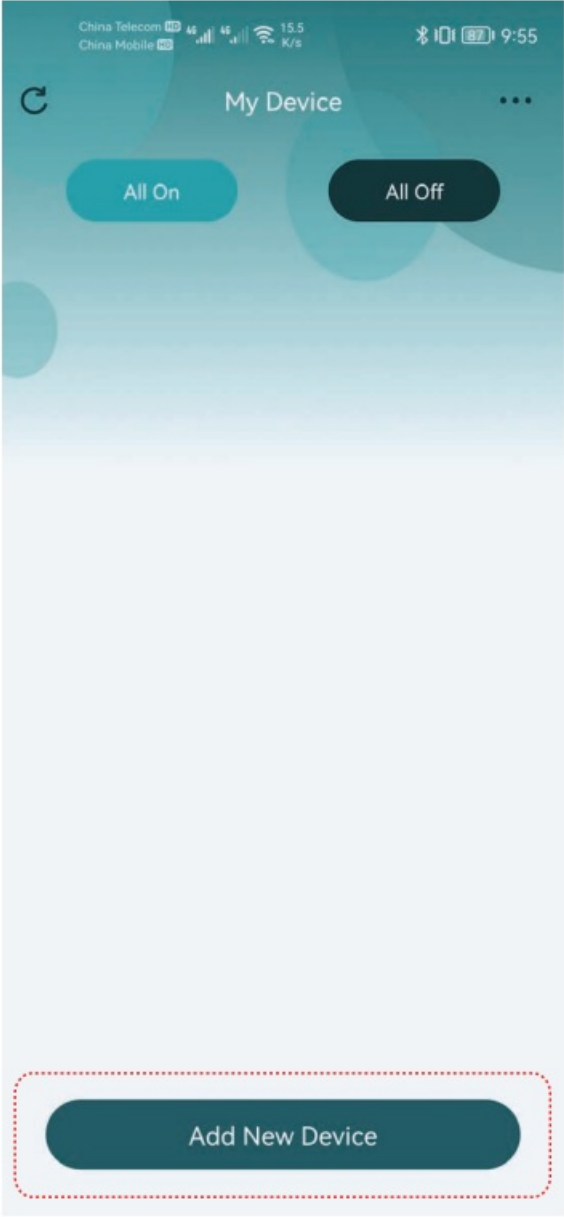

- If the Obulb Pro has not been connected within 3 minutes, it will exit the network setting mode automatically. You can also exit the mode with any button operation on the Obulb Pro.
- The Obulb Pro can only be searched and added to one mobile phone. If you want to control it with another mobile phone, you can share your current network data by generating a QR Code with the OLIGHT APP. Alternatively, you can disconnect the Obulb Pro and use another device to search and add it.
- The OLIGHT APP cannot control the Obulb Pro if its button is locked out. Please unlock the button to enable control.
- When the OLIGHT APP imports network data from a QR code, the original data in the OLIGHT APP will be overwritten.
- The number of Olight devices connected determines how many mobile phones are allowed for simultaneous control via network data sharing. If there is only one Olight device connected, only the first phone that searched and added the Obulb Pro can control it. If there are two or more Olight devices connected, control can be shared among the same number of phones. If another phone is not able to connect to a device after scanning the QR code, it may be because the number of phones exceeds the number of devices. To ensure a successful connection, please disconnect the device from your previously connected phone.
- By generating a QR code, the OLIGHT APP can share a connected device to another phone so that they can also have control. Settings and preferences like product names or pictures cannot be shared. Once the QR code is shared, the OLIGHT APP will not synchronize any new changes unless a new QR code is generated and shared again.
- Frequent operation or multi-device control may lead to data overload and cause the OLIGHT APP to respond slowly or stop responding. Please try again or refresh the status.
- OTA update is only available for Android phones.

OBULB PRO AUTO SLEEP

If the connected Obulb Pro is left without operation for 8 hours, it will enter sleep mode automatically and the OLIGHT APP will lose control of it. To regain control, please wake up the Obulb Pro with any button operation or by charging it.

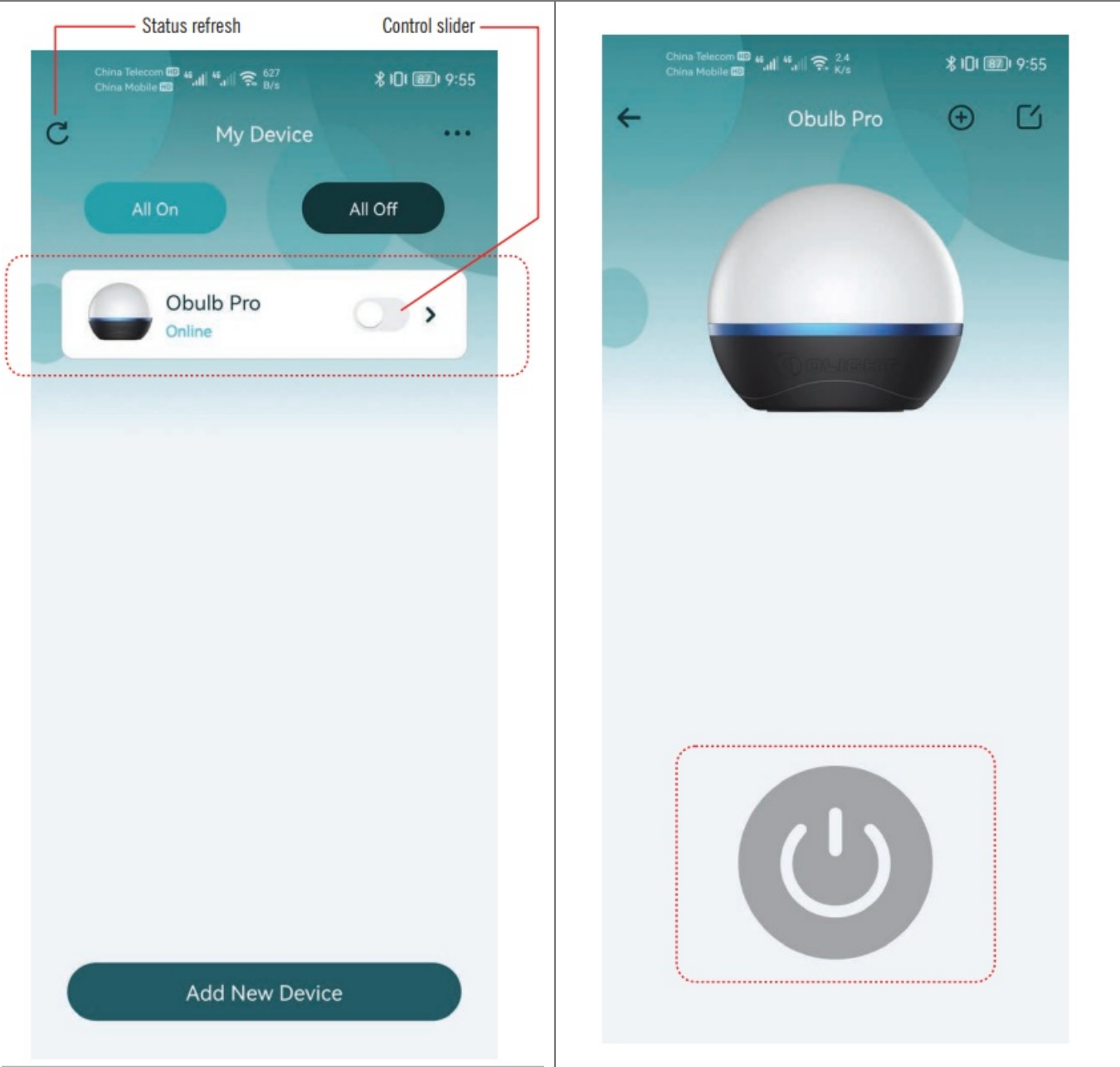
SEARCHING AND ADDING THE BULB PRO

Before searching and adding the Obulb Pro, please enable the Bluetooth and GPS functions on your mobile phone. After that, set the Obulb Pro to the network setting mode and launch the OLIGHT APP.

1. Tap “Add New Device” to search for a new Olight device.	2. Tick the MAC address of the Obulb Pro, and tap “OK” to add it.
	

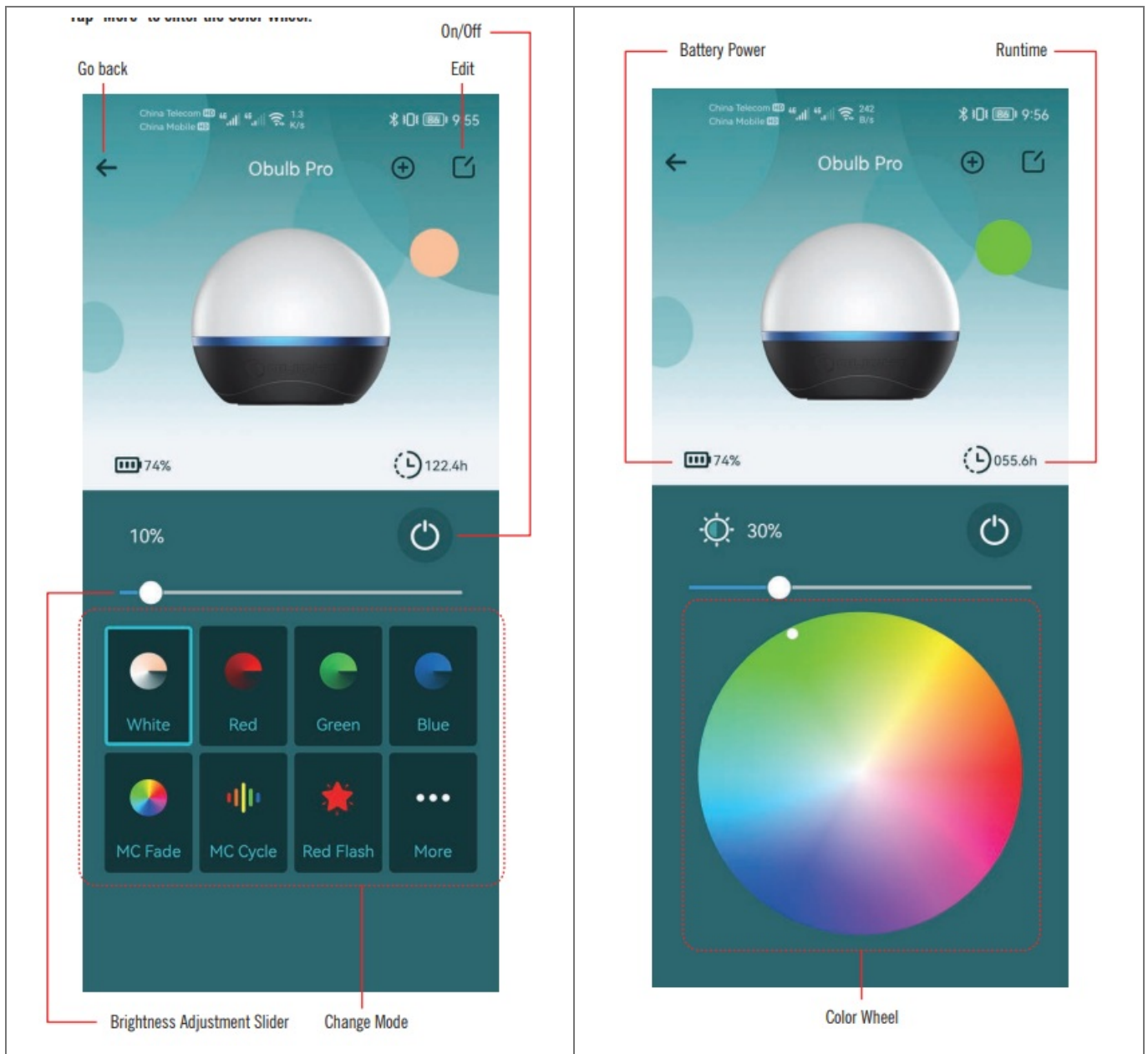
3. After it is added, the Obulb Pro will appear in the “My Device” list. Users can turn it on/off by tapping the control slider or access the control panel by tapping the device entry. If the OLIGHT APP is re-launched, it reverts to the “My Device” list directly with all the devices connected before on display. If a device is greyed out, it is offline. To bring it back online, please make sure that the device is not turned off or in sleep mode, and then refresh the status.

4. Tap the button icon to turn the Obulb Pro on and activate more control options on the control panel.



5. With the “Mode” tab, the control panel allows users to change modes, adjust brightness levels, and turn the Obulb Pro off. Tap “More” to enter the Color Wheel.

6. With the “Color” tab, the control panel allows users to customize colors with a color wheel, adjust brightness levels, and turn the Obulb Pro off.

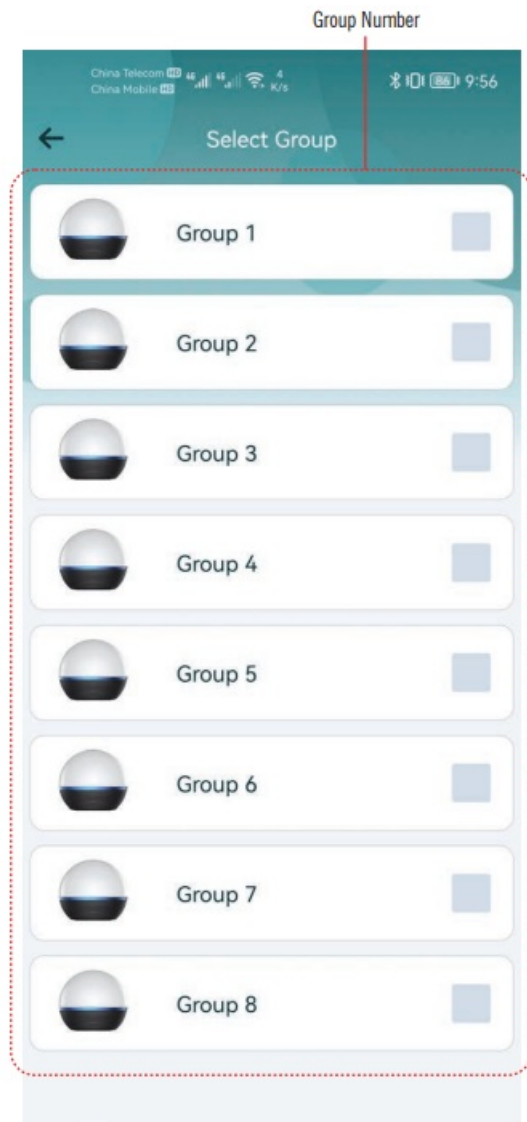
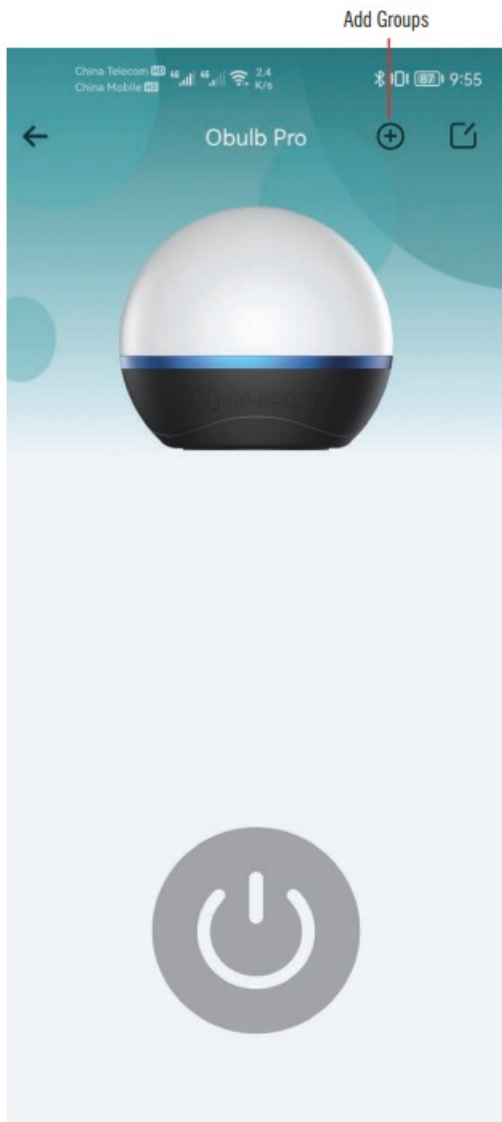


7. ADD GROUPS

Users can control their Olight devices in groups after including several devices together. It supports 8 groups at the most.

1. Tap “+” in the upper right corner of the control panel to enter the “Select Group” page.

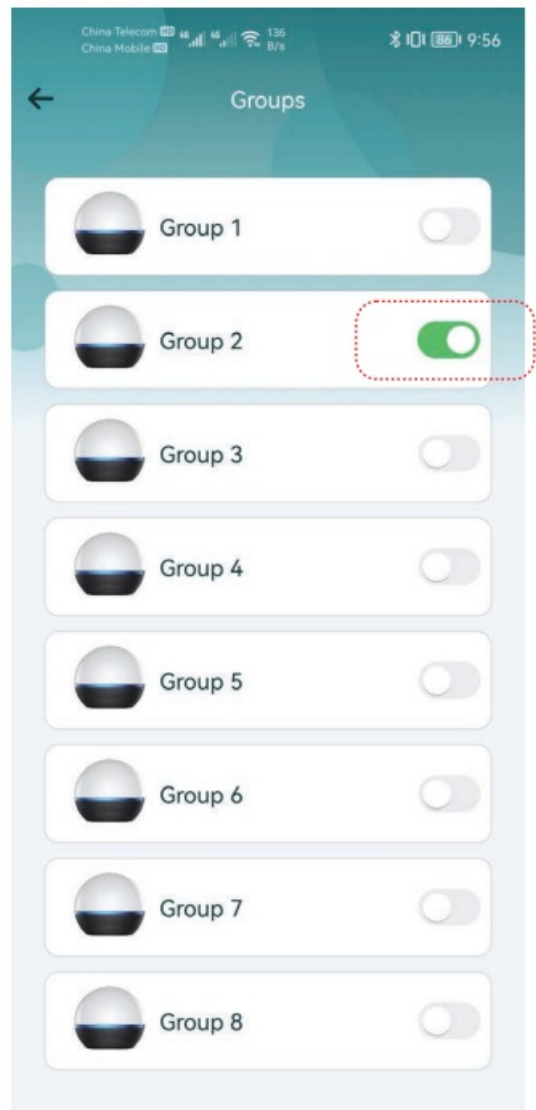
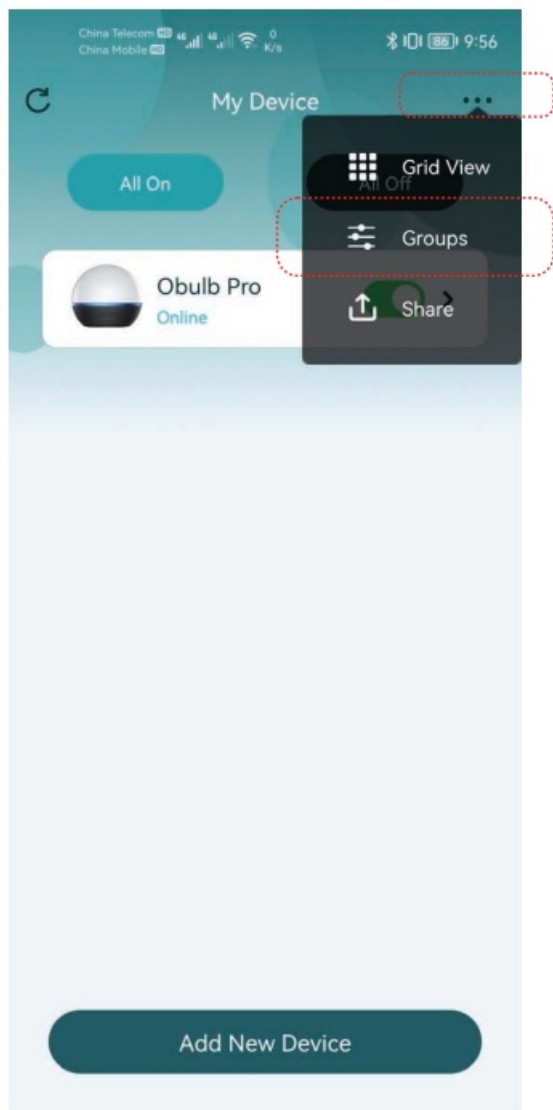
2. Tick the relevant group number to add the Obulb Pro to the group that you like.



8. GROUP CONTROL

1. After the Olight devices have been grouped, tap “...” in the upper right corner of the “My Device” page and select “Groups” to access group control.

2. Tap the control slider to turn on/off all the devices in the same group.



3. Edit the group name by tapping it.

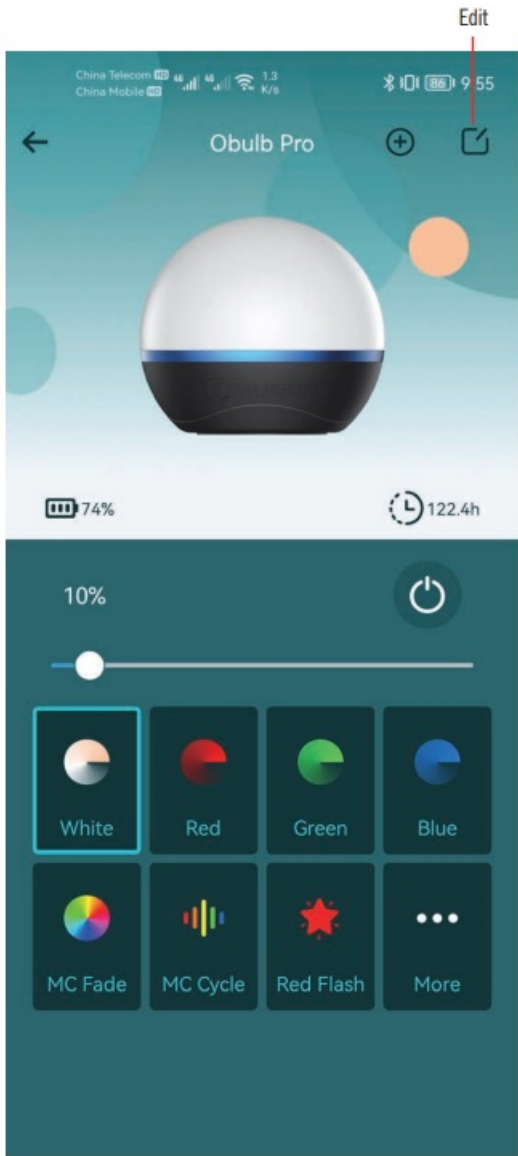
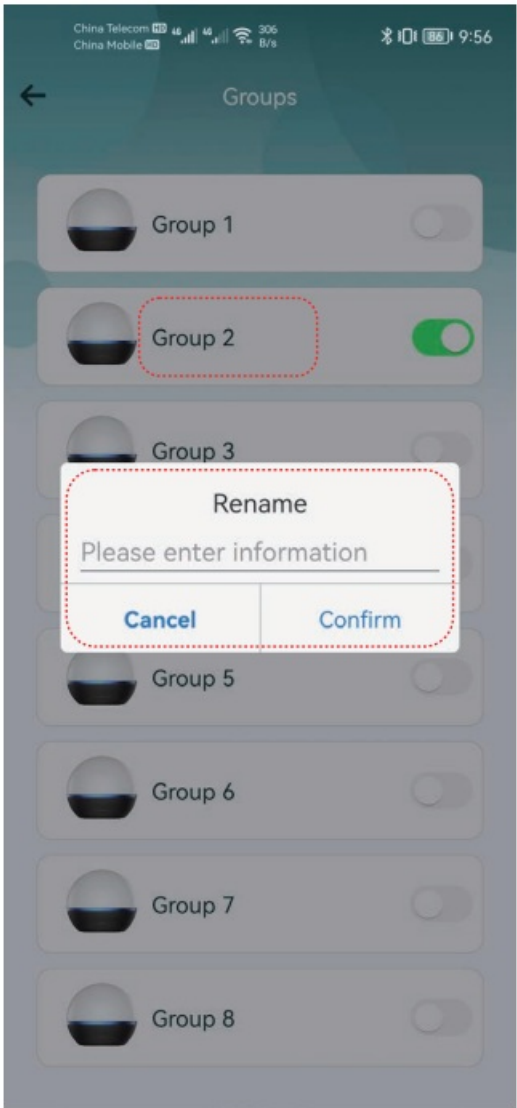
9. EDIT DEVICE INFO

Users can edit the name and picture of a device in the control panel.

1. Tap "✎" to enter the "Edit Device Info" page.

KICK OUT

Tap "Kick Out" to delete the device from the Bluetooth mesh network, and it will no longer be displayed in the device list.

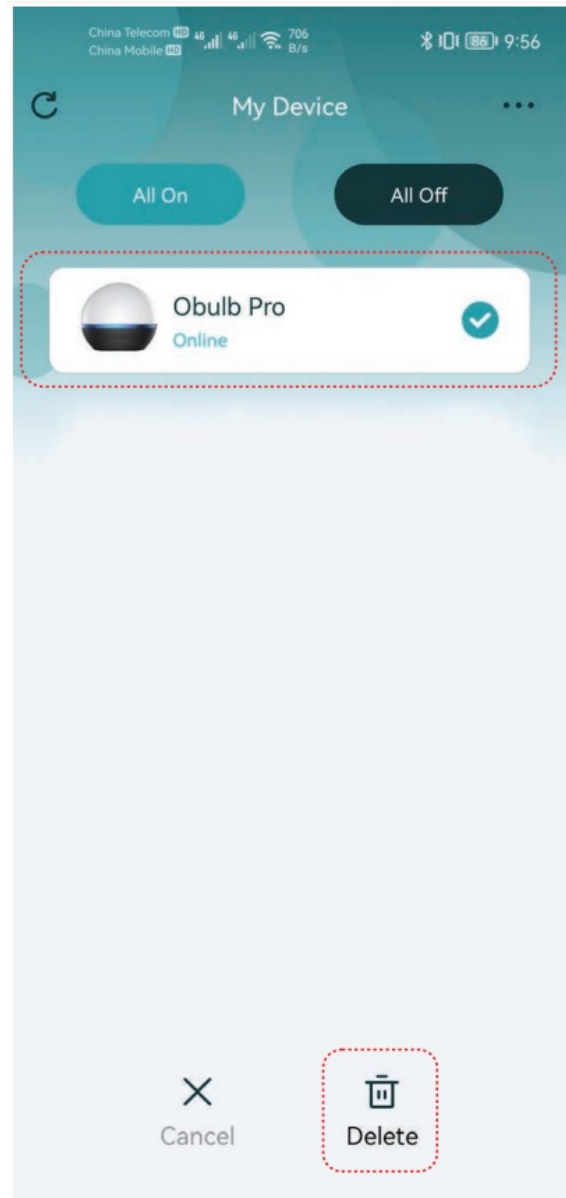
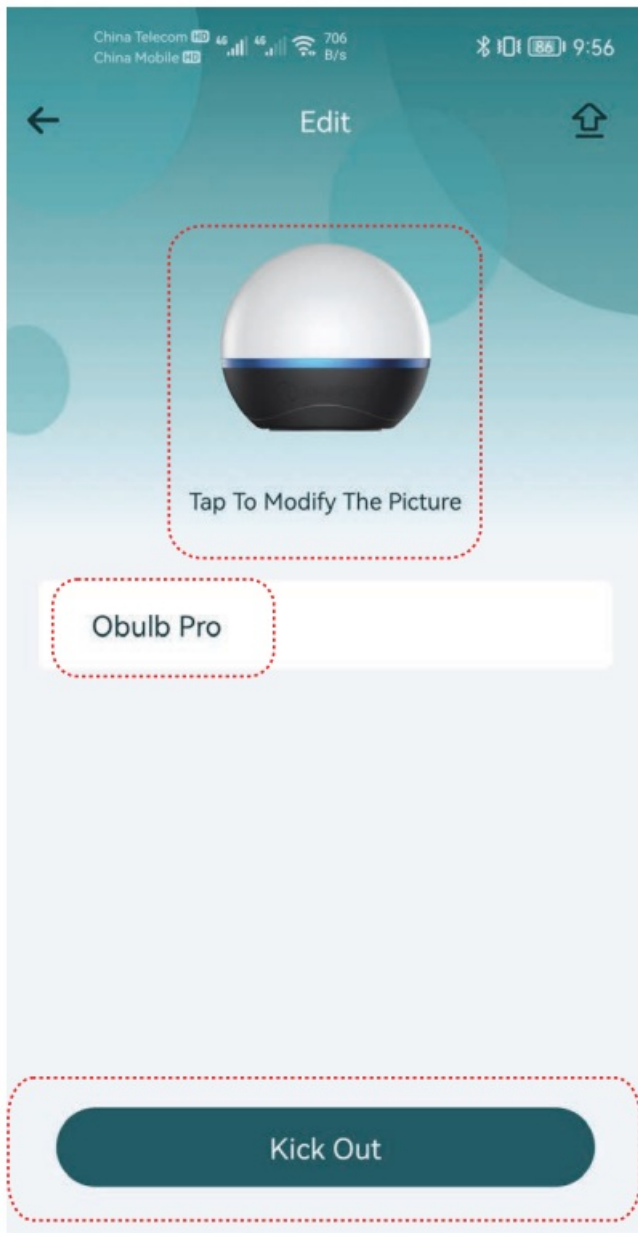


2. Customize the name and picture of the device by tapping the corresponding area.

10. DELETE DEVICES

In the device list, you can delete devices from the Blue tooth mesh network so that they are no longer displayed in the device list.

1. Long press on any device entry;
2. Tick the relevant device;
3. Tap "Delete".

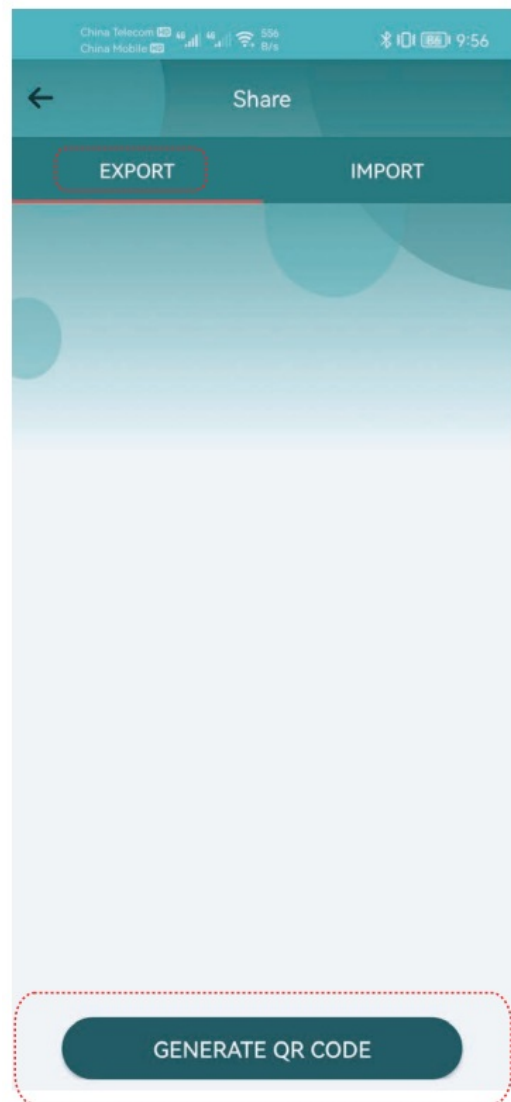
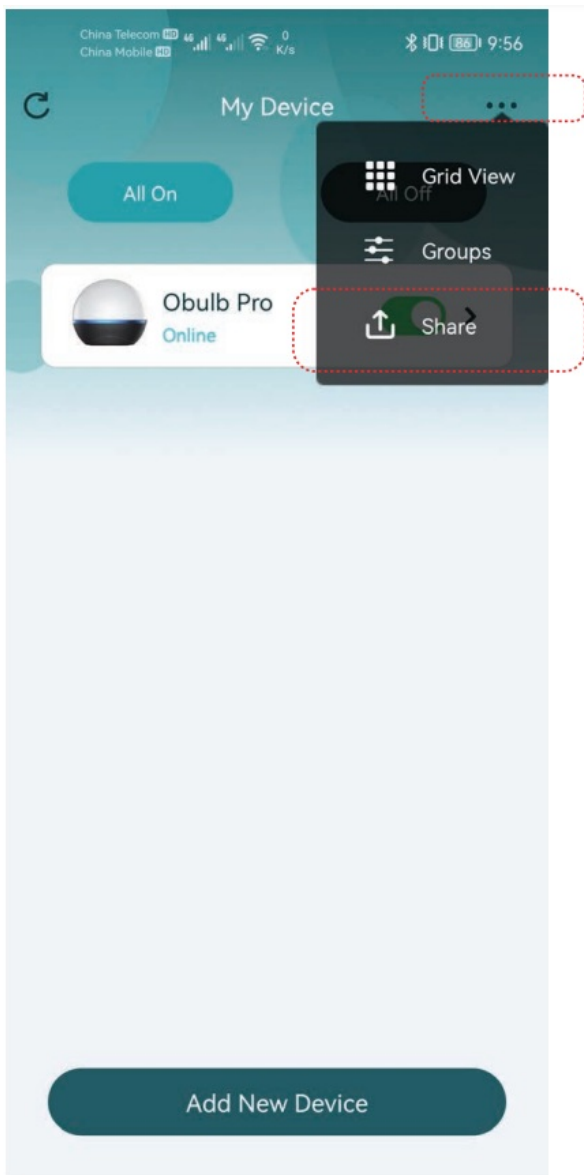


11. SHARE CONNECTED DEVICE DATA

The OLIGHT APP allows users to share connected devices in a mesh network to another mobile phone. This allows the other phone to control the device by simply scanning a generated QR Code.

1. Tap "... " to select "Share";

2. Tap "EXPORT";
3. Tap "GENERATE QR CODE".



By scanning the QR code, the connected device list and ON/OFF status will be quickly imported to another phone.

Note: Please install the OLIGHT APP on the other phone before sharing the Obulb Pro.

4. Tap "IMPORT".


5. Tap "SCAN QR CODE", and scan the QR code to import.

12. OTA UPDATE

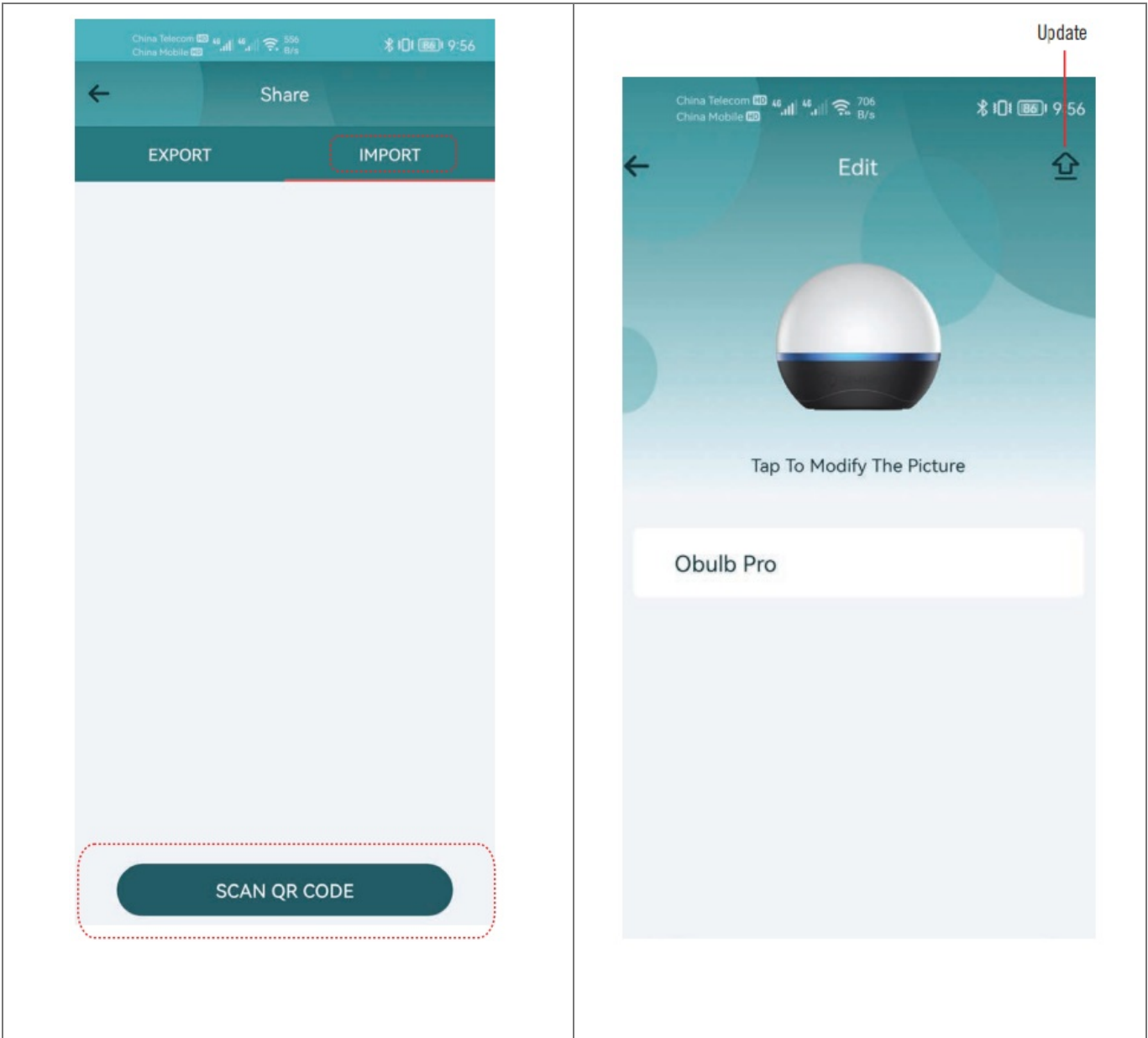
On Android, the OLIGHT APP can update the firmware on the compatible Olight devices wirelessly via Bluetooth.

Please download the firmware package from the official website


(<https://olightworld.com>), unzip it, and then upload it to your mobile phone to use it.

1. Tap " " in the upper right corner of the "Edit Device Info" page.

2. Select the downloaded firmware file and then start the update.



Documents / Resources

	OLIGHT Obulb Pro Multicolor Light with Bluetooth App Control [pdf] User Manual Obulb Pro, Multicolor Light with Bluetooth App Control, Obulb Pro Multicolor Light with Bluetooth App Control
---	---

References

- [Olightworld.com](https://www.o-lightworld.com). Olight Flashlights, Tactical Light, Outdoor Light, Weapon Light