

## OLASOM JWR02 PORTABLE WATER FLOSSER



# OLASOM JWR02 Portable Water Flosser User Manual

[Home](#) » [OLASOM](#) » OLASOM JWR02 Portable Water Flosser User Manual 

### Contents

- 1 OLASOM JWR02 Portable Water Flosser
- 2 IMPORTANT SAFEGUARDS
- 3 Charging Unit Prior to First Use
- 4 TIP USAGE
- 5 Troubleshooting
- 6 Warranty
- 7 FREQUENTLY ASKED QUESTIONS
- 8 VIDEO – PRODUCT OVERVIEW
- 9 References
- 10 Related Posts

# OLASOM

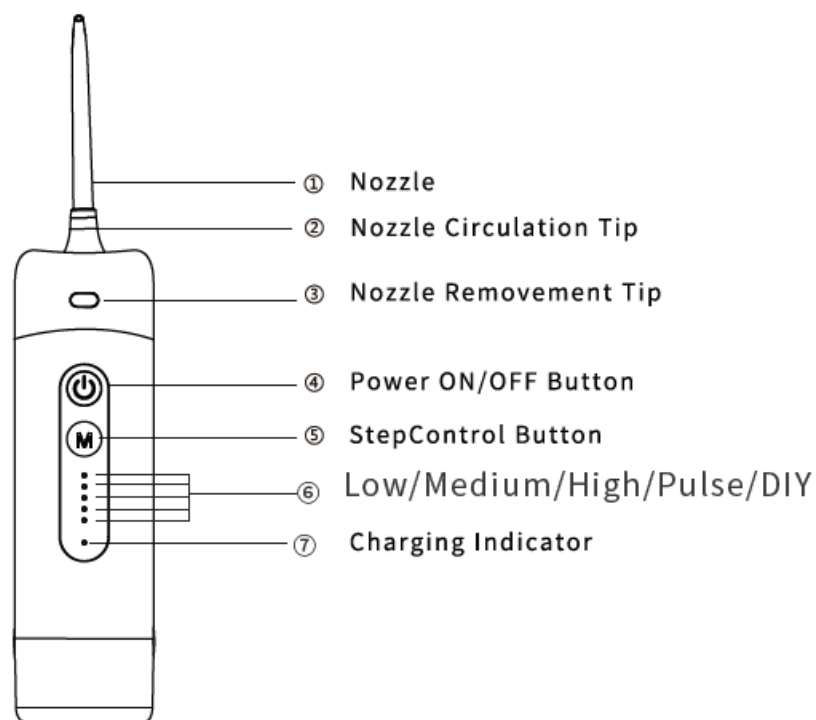
**OLASOM JWR02 Portable Water Flosser**



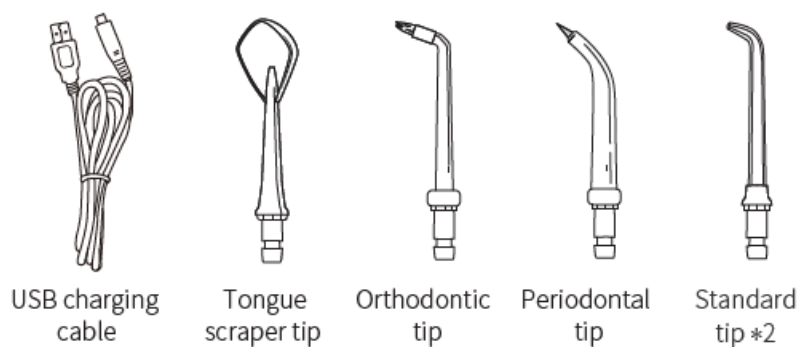
Thanks for your purchase of water flosser. Please read this user manual carefully and keep it in a safe place for future reference. If you need any help, please contact us.

Name	Irrigator	Input	5V 1A
Material	ABS PC	Water pressure range	35-110psi
Charging time	4-5hours	Waterproof level	IPX7
Reservoir capacity	320ML	Water flow method	Pulsate water

## Fittings



## Accessories



## IMPORTANT SAFEGUARDS

When using electrical products, especially when children are present, basic safety precautions should always be followed, including the following:

READ ALL INSTRUCTIONS BEFORE USING.

### DANGER:

#### To reduce the risk of electrocution:

- Do not handle the charger with wet hands.
- Do not place the charger in or drop the charger into water or other liquid.
- Check the charger cord for damage before the first use and during the life of the product.
- Use this product only as indicated in these instructions or as recommended by your dental professional.
- Only use tips and accessories that are recommended by the Water flosser.
- Do not drop or insert any foreign object into any opening on the product.
- Keep the charging unit and cord away from heated surfaces.

- Do not use this product outdoors or operate where aerosol (spray) products are being used or where oxygen is being administered.
- Do not use iodine, saline (salt solution), or water-insoluble concentrated essential oils in this product. Use of these can reduce performance and will shorten the life of the product. Use of these products may void warranty.
- Fill the reservoir with water or other dental professional-recommended solution only.
- Remove any oral jewelry prior to the use of this product.
- Do not use if you have an open wound on your tongue or in your mouth.

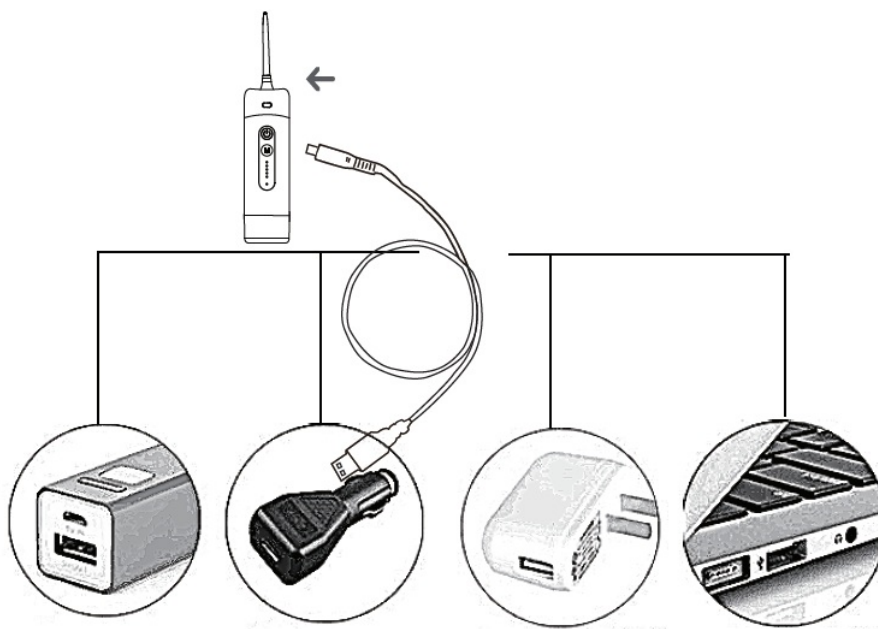
**WARNING:**

**To reduce the risk of burns, electrocution, fire, or injury to persons:**

- Do not plug this device into a voltage system that is different from the voltage system specified on the device or charger.
- Improper voltage will damage the product and VOID warranty.
- If the product is opened/disassembled for ANY reason, the warranty is VOID.
- Do not use this product if it has a damaged cord or plug if it is not working properly, if it has been dropped or damaged, or dropped into water.
- Do not direct water under the tongue, into the ear, nose, or other delicate areas. This product is capable of producing pressures that may cause serious damage in these areas.
- Do not direct water into the nose or ear. The potentially deadly amoeba, *Naegleria fowleri*, may be present in some tap water or unchlorinated well water and may be fatal if directed into these areas.
- If your physician advised you to receive antibiotic premedication before dental procedures, you should consult your dentist before using this instrument or any other oral hygiene aid.
- Close supervision is necessary when this product is used by, on or near children or invalids.
- Children should be supervised to ensure that they do not play with the appliance.

SAVE THESE INSTRUCTIONS.

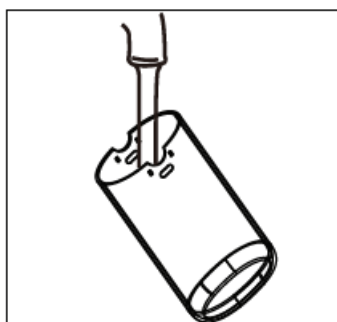
**Charging Unit Prior to First Use**



This product does not come with an AC/DC charger. The unit is charged through devices with 5V USB power capabilities such as mobile phones, laptops, USB power wall chargers, etc. The charge indicator on the handle will flash when charging and will stay on continuously when the unit is fully charged. A complete recharge will take 3-5 hours.

- **Filling the Reservoir**

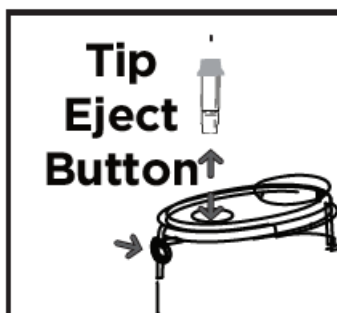
Lift flip top on the reservoir and fill the reservoir with lukewarm water. Please pull down the hose to the water tank before use.



- **Inserting and Removing Tips**

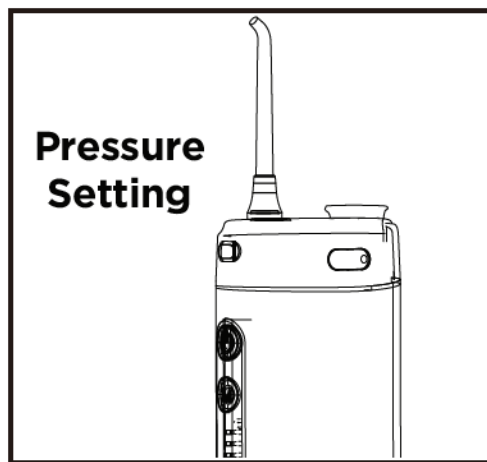
Insert the tip into the center of the knob at the top of the Water Flosser handle. Press firmly until the tip clicks into place. To remove the tip from the handle, press the tip eject button and pull the tip from the handle.

**CAUTION:** Do not press the tip eject button while the unit is running.



- **Adjusting the Pressure Setting**

You can adjust the pressure setting on your Water Flosser by pressing the mode button on the handle. Start with the lowest setting and increase to your liking.



#### • When Finished

Turn the unit off. Empty any liquid left in the reservoir.

##### ◦ DIY mode:

- Select the “M” button to choose the DIY mode and then turn on the power button.
- Long press the “M” button until the LED light flashes and press the “M” button continuously to adjust the water pressure(level ). 3. Release the button. DIY remembers the new water pressure.

### TIP USAGE



#### • Jet Tip

Been over the sink and guide the jet to your teeth and gums, Glide the handle switch up to start the water stream. Keep your mouth slightly open to allow the water to run into the sink. Direct the stream of water towards the gumline at 90 degrees, so that contact is made where the tooth and gums meet. Manoeuvre the flow of water from tooth to tooth remembering to pause briefly between each tooth.

#### • Periodontal Tip

Place the periodontal tip in contact between the teeth and the gumline. Lean the soft tip against a tooth at a 45-degree angle and gently place the tip under the gumline, into the pocket. Start the irrigator by setting it at the lowest pressure and clean by gently following the gumline, and inserting the periodontal tip in between teeth. Continue tracing along the gumline to massage the gums and safely deliver the solution into the gingival pockets below the gumline.

#### • Orthodontic Tip

Use the Orthodontic Tip to simultaneously brush and rinse hard-to-reach areas around braces, crowns, bridges, and implants. Start on the last molar(back tooth). Place the tip at a 90-degree angle to the tooth at the gum line. Gently glide tip along the gumline, pausing briefly to lightly brush the area between teeth and all around the orthodontic bracket, before proceeding to the next tooth and outside of both the upper and lower teeth. Continue the process until you have cleaned the inside.

#### • Tongue Cleaner Tip

Lean your head over the sink. Glide the pressure button to the lowest setting. Start the irrigator place the tongue

cleaner at the back of your tongue and move it forward to clean your tongue. Repeat to cover the entire tongue. Set the pressure to the lowest setting and adjust to a higher setting for more water pressure as it feels comfortable.



## Troubleshooting

Problem	Cause	Corrective action
Reservoir leaks	The seal ring is abnormal	Remove the seal ring and reinstall
Low water pressure	Low battery	Recharge the device
	Nozzle head blocks	Replace with new nozzle heads
Lasts only a few minutes with a full charge	Dead battery	Contact retailers
	Charging cord	Try with a new charging cable
	adapter broken	Try with a new adapter
The motor makes a sound but no water comes out	Nozzle head blocks	Replace with new tips
	Suction valve dislocation	Keep the device on, fill the water to the hole where the nozzle head goes into
The motor doesn't make sound	Low Battery (Keep the device idle for more than 3 months))	Activate the battery by recharging it for 16 hours
Product stopped working suddenly	Overheating protection is activated (Continuous use 5 tanks of water with highest pressure)	Restart the device in 2 hours

If your problem still hasn't been fixed by the above troubleshooting, please kindly contact the retailers for help.

**After-sales Customer Services:** [OlasomServiceTeam@outlook.com](mailto:OlasomServiceTeam@outlook.com)

- It may occur below situation when first time uses this machine or left it unused for a long time: The nozzle head

won't spray water immediately after turning on the machine.

- In this case, please follow the below instructions to make it work: Add the proper amount of water into the place where the tips are inserted. Insert the tip in and press the power button to turn on the device.

## Battery Care and Disposal

- The unit contains a Lithium battery. At the end of the battery life, please recycle the unit at your nearest recycle center per local or state requirements. The battery is not replaceable.

## Maintenance

- Make sure to throw out the water inside the tank, and run the appliance for 2 to 3 seconds to drain the water after usage.
- Otherwise bacteria could collect in the remaining water.
- Do not submerge the unit in water or any other liquid.
- Wipe the exterior when necessary with a soft cloth and mild non-abrasive cleanser.
- Reservoir may be washed with soapy water.
- Wash the dirt off from inside using a brush or similar, and wipe off with a cloth. Dry the reservoir when not using for a long period.

## Warranty

Water flosser will repair or replace (at our option) your unit free of charge for 12 months from the date of purchase if the appliance is defective in workmanship or materials. This guarantee does not cover: damage due to improper use, normal wear or use as defects that have a negligible effect on the value or operation of the appliance. The guarantee becomes void if repairs are undertaken by unauthorized persons and if original OLASOM parts are not used. To obtain service within the guarantee period, hand in or send the complete appliance with your purchase receipt to an authorized OLASOM distributor/customer service center in your country. Purchaser is responsible for all postage and freight charges and any other expenses incidental to claiming against this Warranty.

**Note:** Excessive heat will cause machine to stop when in use, Switch off the machine, cool for 2 hours, and re-start

**After-sales Customer Services:** [OlasomServiceTeam@outlook.com](mailto:OlasomServiceTeam@outlook.com)

## FREQUENTLY ASKED QUESTIONS

What is the brand and model of the portable water flosser?

The brand of the portable water flosser is OLASOM, and the model is JWR01.

What is the power source of the OLASOM JWR01 Portable Water Flosser?

The power source of the OLASOM JWR01 Portable Water Flosser is battery-powered, requiring 1 Lithium Ion battery.



What special feature does the OLASOM JWR01 Portable Water Flosser offer?

The OLASOM JWR01 Portable Water Flosser features an over 320ml water tank, providing ample capacity for thorough oral cleaning.

What are the primary product benefits of the OLASOM JWR01 Portable Water Flosser?

The primary product benefits of the OLASOM JWR01 Portable Water Flosser include 5 clean modes, 5 jet tips for versatile use, and a memory function for convenience.

How many units are included in the OLASOM JWR01 Portable Water Flosser package?

The OLASOM JWR01 Portable Water Flosser package includes one unit.

What are the product dimensions of the OLASOM JWR01 Portable Water Flosser?

The product dimensions of the OLASOM JWR01 Portable Water Flosser are 2.87 x 1.88 x 6.49 inches.

How much does the OLASOM JWR01 Portable Water Flosser weigh?

The OLASOM JWR01 Portable Water Flosser weighs 1.21 pounds.

What is the item model number of the OLASOM JWR01 Portable Water Flosser?

The item model number of the OLASOM JWR01 Portable Water Flosser is JWR01.

Who is the manufacturer of the OLASOM JWR01 Portable Water Flosser?

The manufacturer of the OLASOM JWR01 Portable Water Flosser is OLASOM.

What is the price of the OLASOM JWR01 Portable Water Flosser?

The price of the OLASOM JWR01 Portable Water Flosser is \$32.99.

What should I do if my OLASOM JWR02 Portable Water Flosser is not turning on?

If your OLASOM JWR02 Portable Water Flosser is not turning on, ensure that the battery is properly inserted and charged. Try pressing and holding the power button for a few seconds to see if it activates. If it still doesn't turn on, check for any loose connections or contact OLASOM customer support for assistance.

How can I troubleshoot if my OLASOM JWR02 Portable Water Flosser is not producing water flow?

If your OLASOM JWR02 Portable Water Flosser is not producing water flow, check if the water tank is filled adequately and if there are any blockages in the nozzle. Try cleaning the nozzle with warm water and ensure that the device is charged before use.

What should I do if my OLASOM JWR02 Portable Water Flosser is leaking water during use?

If your OLASOM JWR02 Portable Water Flosser is leaking water, ensure that all connections are tight and properly sealed. Check for any cracks or damage in the water tank or nozzle, and replace any damaged parts if necessary.

How do I troubleshoot if the battery of my OLASOM JWR02 Portable Water Flosser is not holding a charge?

If the battery of your OLASOM JWR02 Portable Water Flosser is not holding a charge, try using a different charging cable or adapter. Clean the battery contacts and charging port, and consider replacing the battery if necessary.

What can I do if my OLASOM JWR02 Portable Water Flosser is making unusual noises during operation?

If your OLASOM JWR02 Portable Water Flosser is making unusual noises, it may indicate a mechanical issue or blockage. Turn off the device, inspect it for any loose parts or debris, and clean the unit as per the manufacturer's instructions.

VIDEO – PRODUCT OVERVIEW



[Download the PDF link to OLASOM JWR02 / OLASOM JWR02 Portable Manual Water-Flosser-User-Manual-1.mp4](#)

References

- [User Manual](#)

[Manuals+](#), [Privacy Policy](#)

This website is an independent publication and is neither affiliated with nor endorsed by any of the trademark owners. The "Bluetooth®" word mark and logos are registered trademarks owned by Bluetooth SIG, Inc. The "Wi-Fi®" word mark and logos are registered trademarks owned by the Wi-Fi Alliance. Any use of these marks on this website does not imply any affiliation with or endorsement.